

Scandinavian Models for Slovenian homes

Scandinavian influences in Slovenian housing culture after WWII

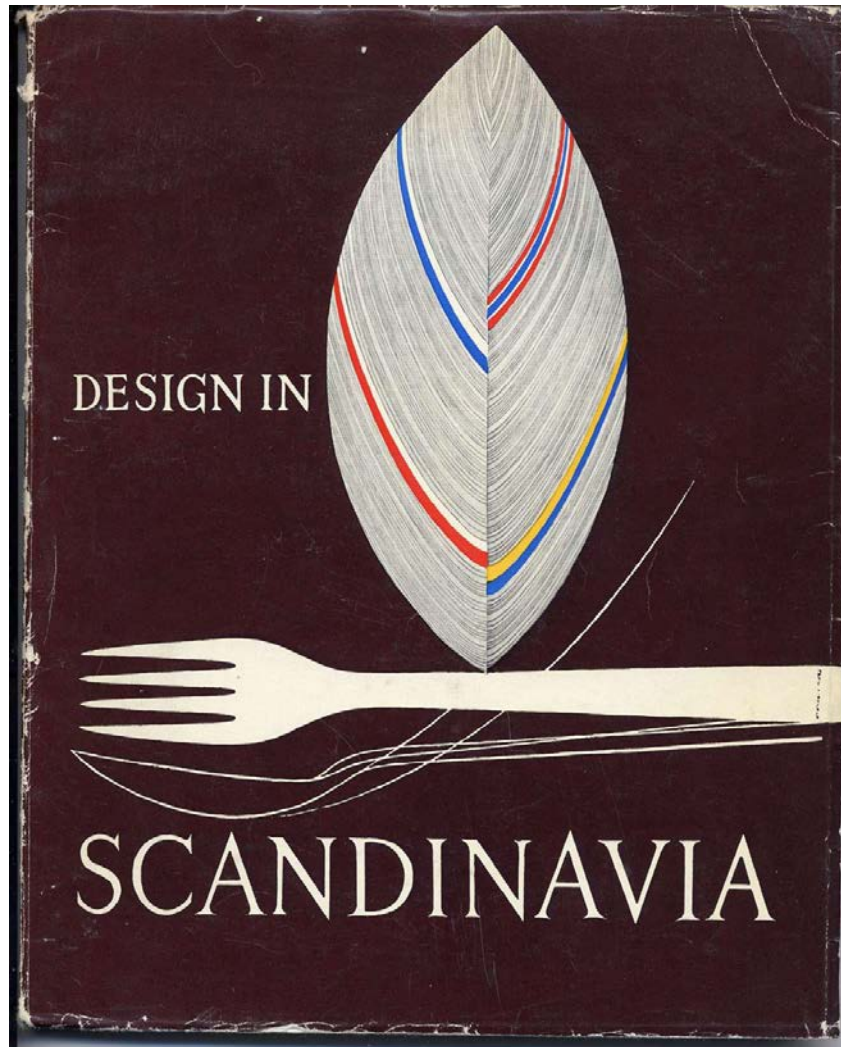
Martina Malešič

Art History Department

Faculty of Arts

University of Ljubljana





Catalogue of the exhibition "Design in Scandinavia", 1954-57

ARHITEKT

Revija za arhitekturo, urbanizem in primoljubno umetnost. Journal of Architecture, Urbanism and Applied Art. The Magazine of Architecture, Town Planning and Applied Art.

Urednik: Uroš Urbanič



GLASILO
D. S. S.
LJUBLJANA

LETO I
1951
ŠTEV. I

Arhitekt, 1951-1963



SVENSK · JUGOSLAVISKA
KONFERENSEN

FÄRG
OCH
FORM

LJUBLJANA

ŠVEDSKO · JUGOSLOVANSKO
POSVETOVANJE

BARVA
IN
OBLIKA

15. - 22.6.1964





DRUŠTVO ARHITEKTOV SLOVENIJE

V A S V A B I N A O T V O R I T E V

RAZSTAVE SODOBNE
ŠVEDSKE ARHITEKTURE

SPODNJI PROSTORI MODERNE GALERIJE
V LJUBLJANI, V TOREK, 10. NOVEMBRA OB 11. URI

Exhibition *Contemporary Swedish architecture*
Museum of modern art, Ljubljana, 1959





Litostroj, Ljubljana, 1948



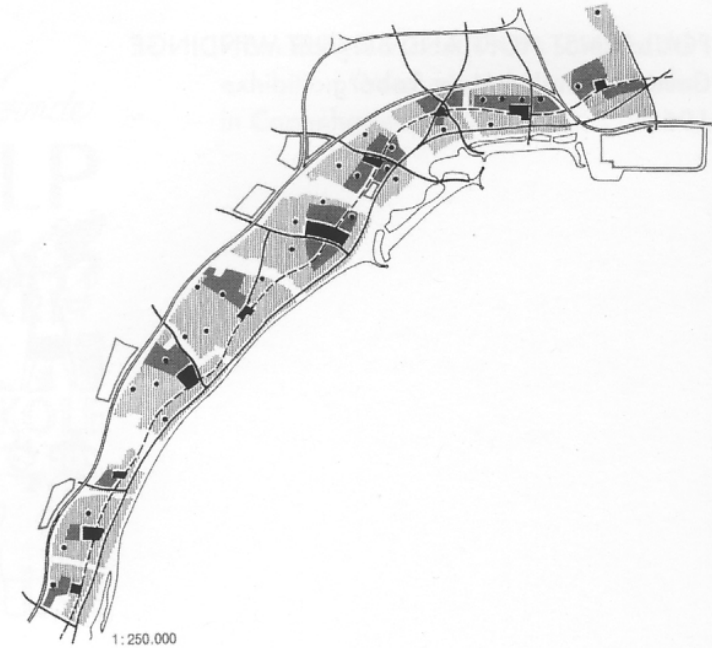
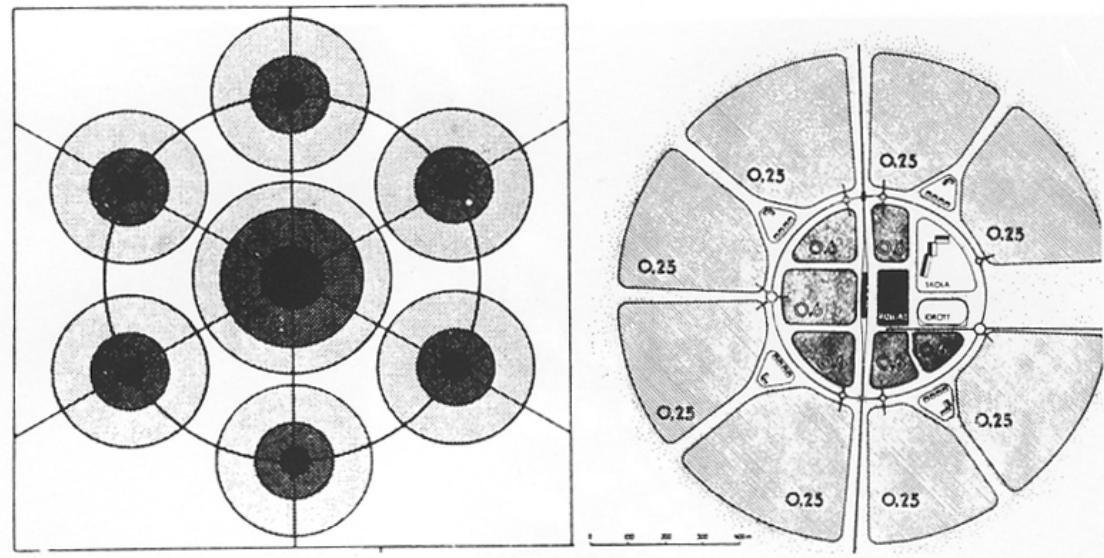
Housing development at Gosposvetska street, Maribor
Urban plan: Ljubo Humek, architecture: Ivan Kocmut, 1953-60



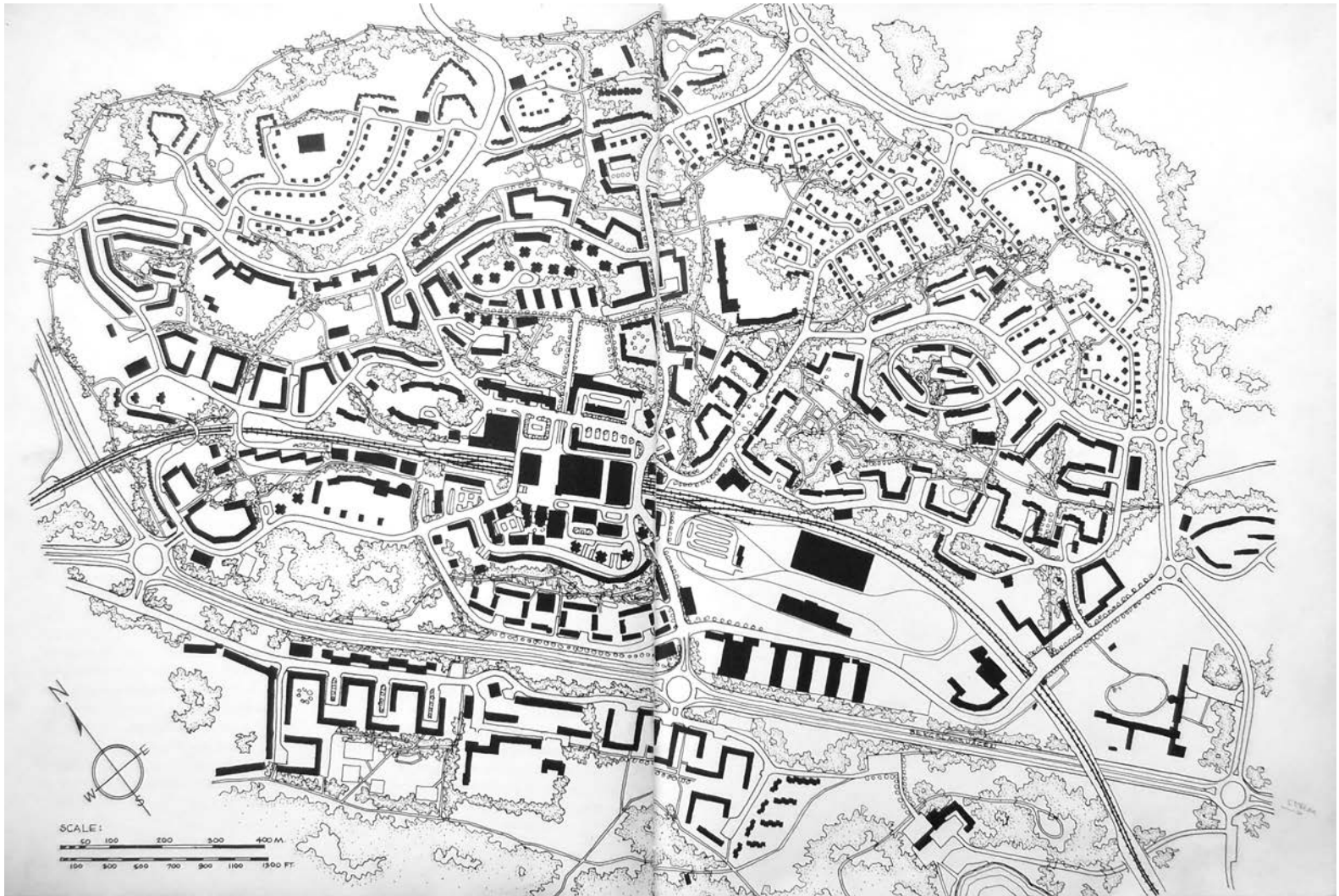
GÖTEBORG. System Estrida golo



77137



Sven Markelius: Sketches for suburban extension of Stockholm, 1945



Vällingby, Stockholm (1952-57)



Stockholm, Vällingby centre (1952-57)



Stockholm, Vällingby centre (1952-57)



**Edvard Ravnikar and Marta Ivanšek Vällingby centre
in Stockholm, 1955**

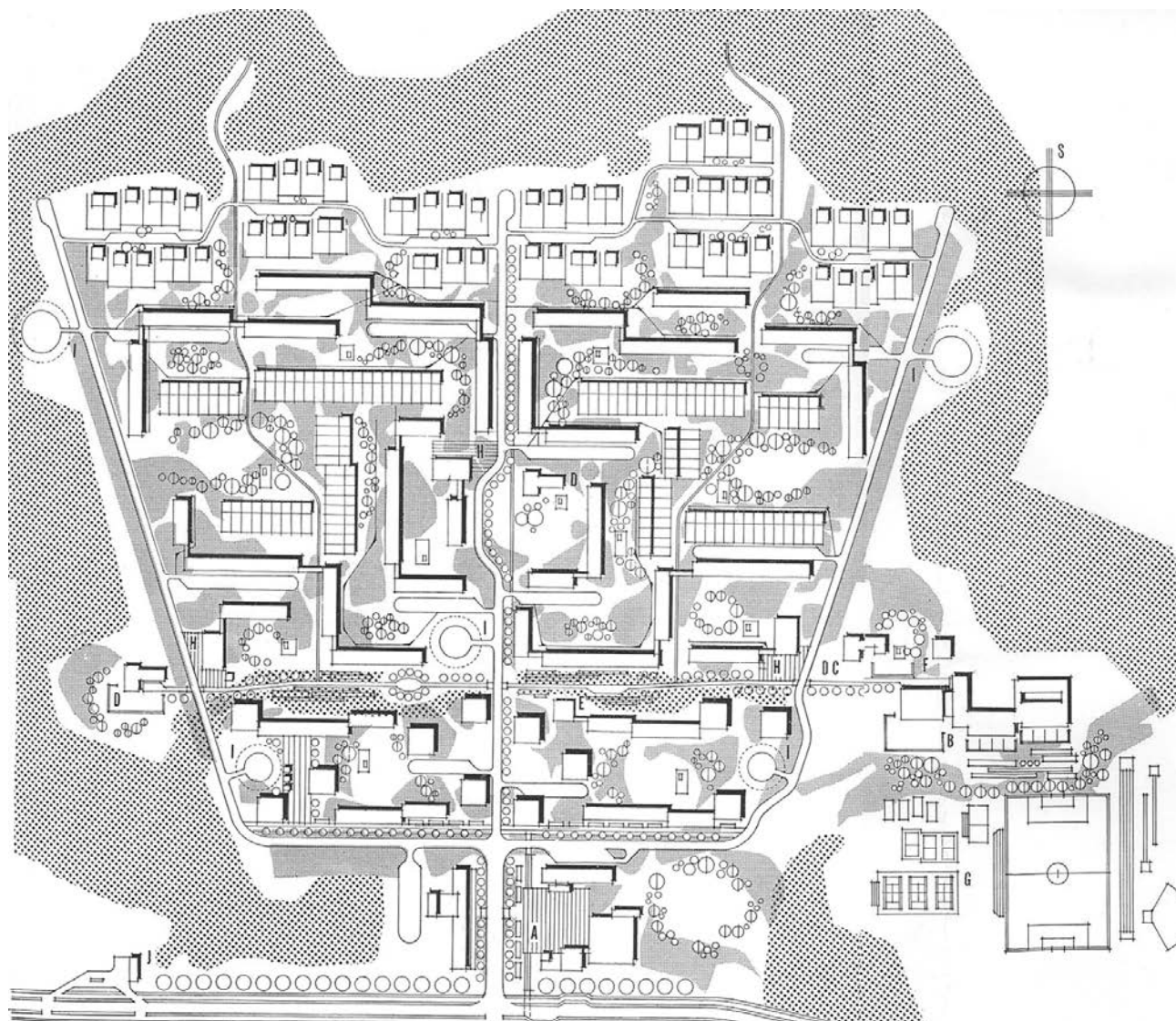
STANBENA ZAJEDNICA ZA 5000 STANOVNIKA

LEGENDA:

- A — središte stanbene zajednice
- B — osmoletka
- C — Dom igre i rada
- D — dečje zabavište
- E — dečje obdanite
- F — Pionirski dom
- G — sportsko igralište
- H — trgovina za osnovno snabdevanje
praonica
- I — garaža
- J — mehanički servis
- L — rezervat za laku industriju

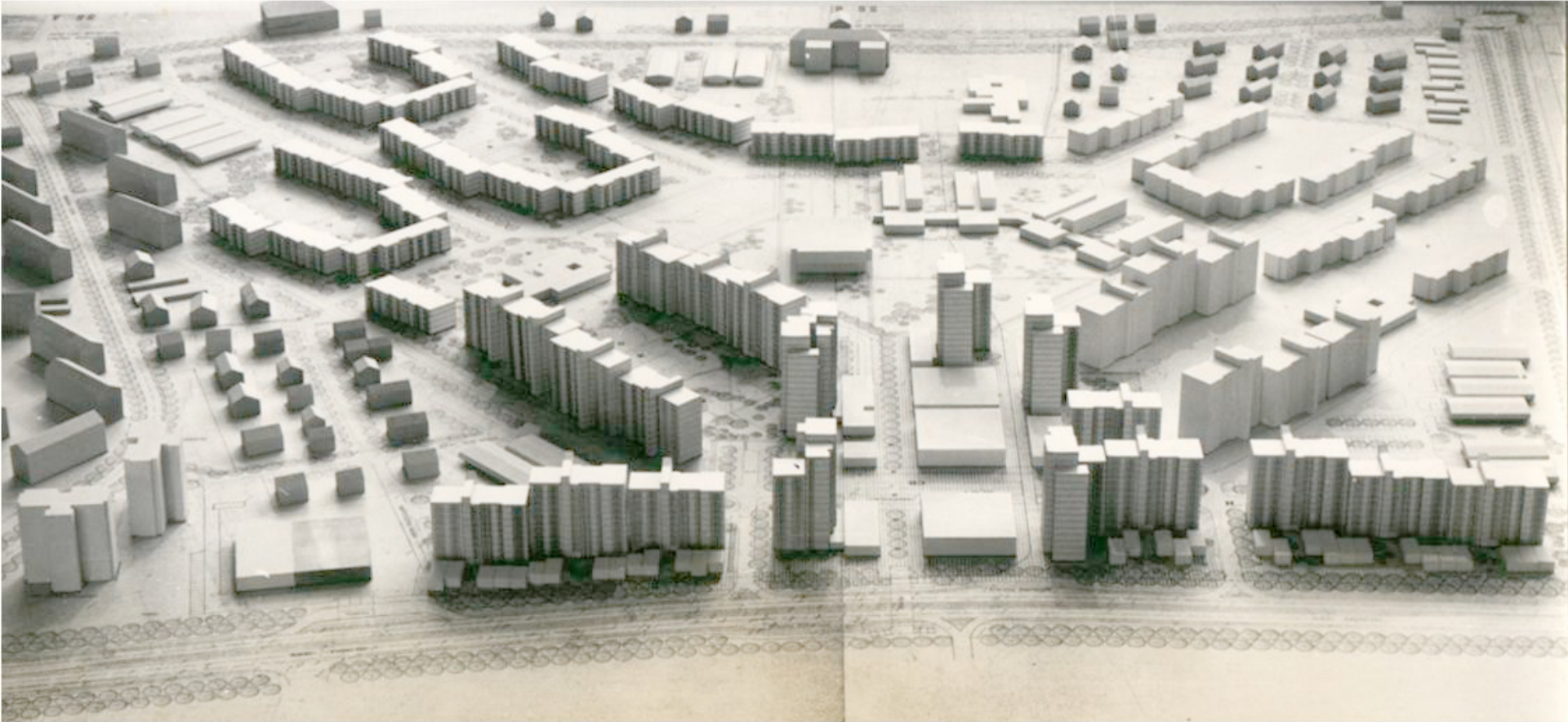
VAŽNIJI PODACI O NASELJU:

Stanovi	
u petokatnicama	841
u blokovima	935
u kućama u nizu	100
u individualnim kućama	66
Ukupno	1.642
Broj stanovnika	
u petokatnicama	750
u blokovima	3.250
u kućama u nizu	600
u individualnim kućama	400
Ukupno	5.000
Površina pojedinih zona	
I. zona	4,25 ha
II. zona	12,23 ha
III. zona	5,00 ha
Ukupno	21,50 ha
Planske površine	
petokatnica	3.948 m ²
blokova	21.710 m ²
kuća u nizu	5.000 m ²
individualnih kuća	4.224 m ²
opšte potrebe (središte, škola itd.)	12.247 m ²
Ukupna zasedana površina	47.149 m ²
Zazidana površina	47.149 m ²
Površina ceste	25.146 m ²
Zelene površine	142.183 m ²
Igrališta	25.089 m ²
Ukupna površina st. zaj. ...	239.537 m ²
Stanbena površina	
u petokatnicama	19.739 m ²
u blokovima	65.350 m ²
u kućama u nizu	10.090 m ²
u individualnim kućama	7.680 m ²
Ukupno	102.859 m ²
Eksploatacija	
za I. zonu	0,72
za II. zonu	0,52
za III. zonu	0,15
Prosečna eksploatacija	0,48
Broj stanovnika na hoktar	
za I. zonu	300
za II. zonu	250
za III. zonu	80



Neighbourhood unit for 5000 residents

Exhibition Family and Household – Porodica i domaćinstvo,
Zagreb, 1958



Neighbourhood unit ŠS-6 (Šiška) in Ljubljana

Urban plan: Janez Vovk in Aleš Šarec, 1964

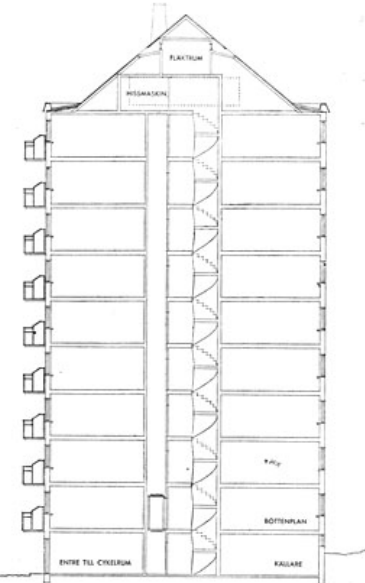
Architecture: Ilija Arnautović



Neighbourhood unit ŠS-6 (Šiška) in Ljubljana

Urban plan: Janez Vovk in Aleš Šarec, 1964

Architecture: Ilija Arnautović

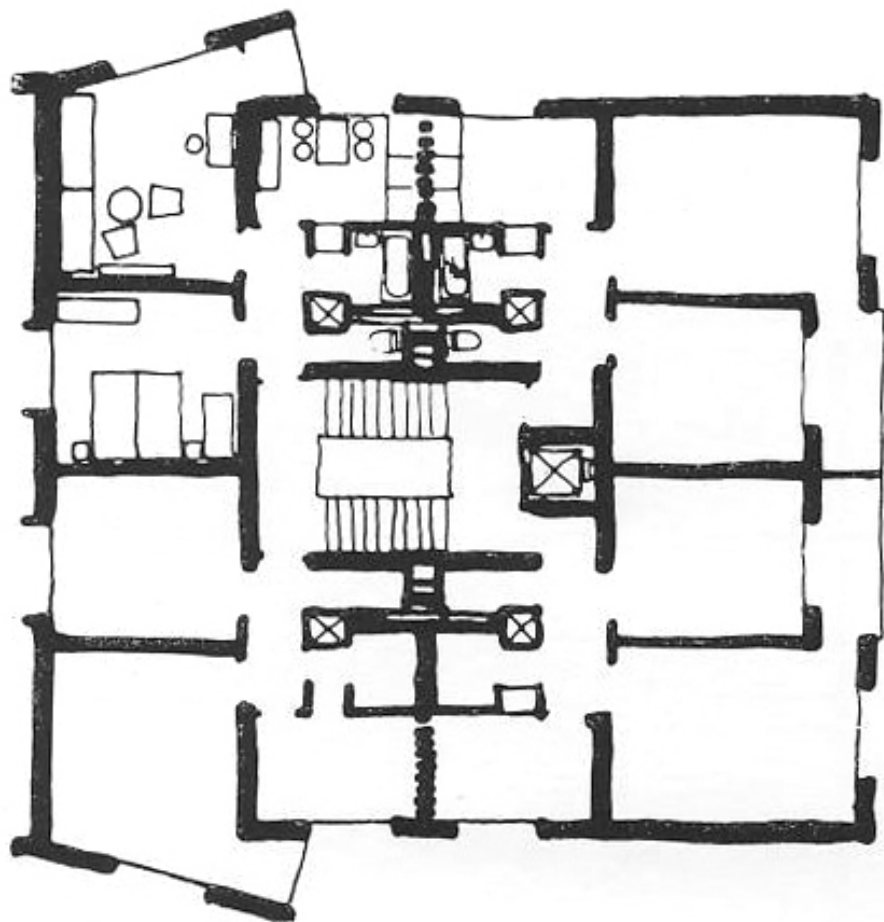


Sektion och planer. Skala 1 : 300.



Danviksklippan, Stockholm

Sven Backström and Leif Reinius, 1945-1948

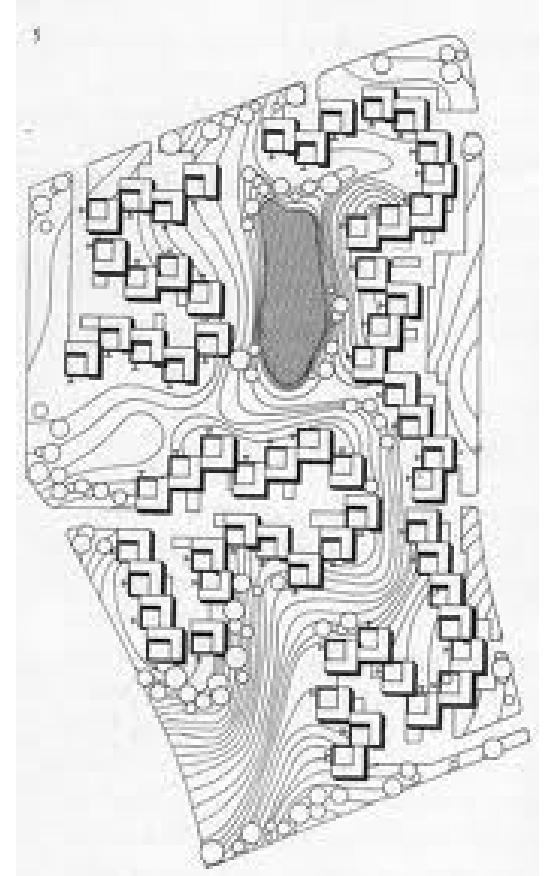


Gosposvetska street, Maribor
Ivan Kocmut, 1953-60

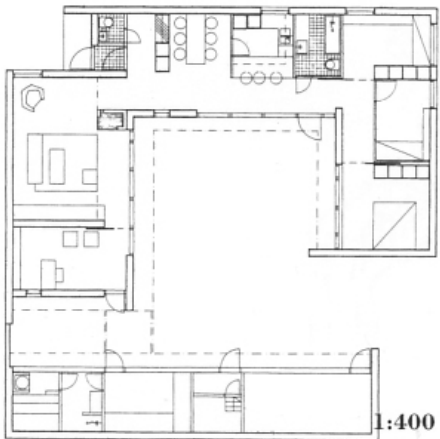


Roška street, Ljubljana

Ilija Arnautović and Milan Mihelič, 1955-67



Kingo Houses, Helsingør, Denmark
Jørn Utzon, 1960



Atrium houses, Tapiola, Finland
Pentti Ahola, 1963-65



Vällingby, Stockholm, Sweden, 1953-54



Murgle, Ljubljana

Urban plan and architecture: Marta and France Ivanšek, 1964-82



Murgle, Ljubljana

Urban plan and architecture: Marta and France Ivanšek, 1964-82



Murgle, Ljubljana

Urban plan and architecture: Marta and France Ivanšek, 1964-82



**France and Marta Ivanšek pod mostom Traneberg v
Stockholmu, 1954-59**

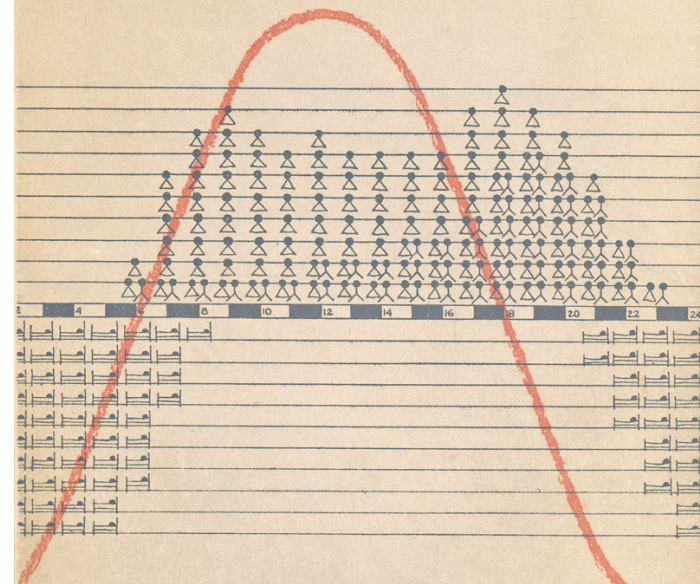
France Ivanšek

DRUŽINA, STANOVANJE IN NASELJE

Anketna raziskava 195 stanovanj v
Savskem naselju v Ljubljani (1961)



HEMMENS FORSKNING SINSTITUT



LENNART HOLM

FAMILJ OCH BOSTAD

Housing research *Family, Apartment and Neighbourhood*, 1961



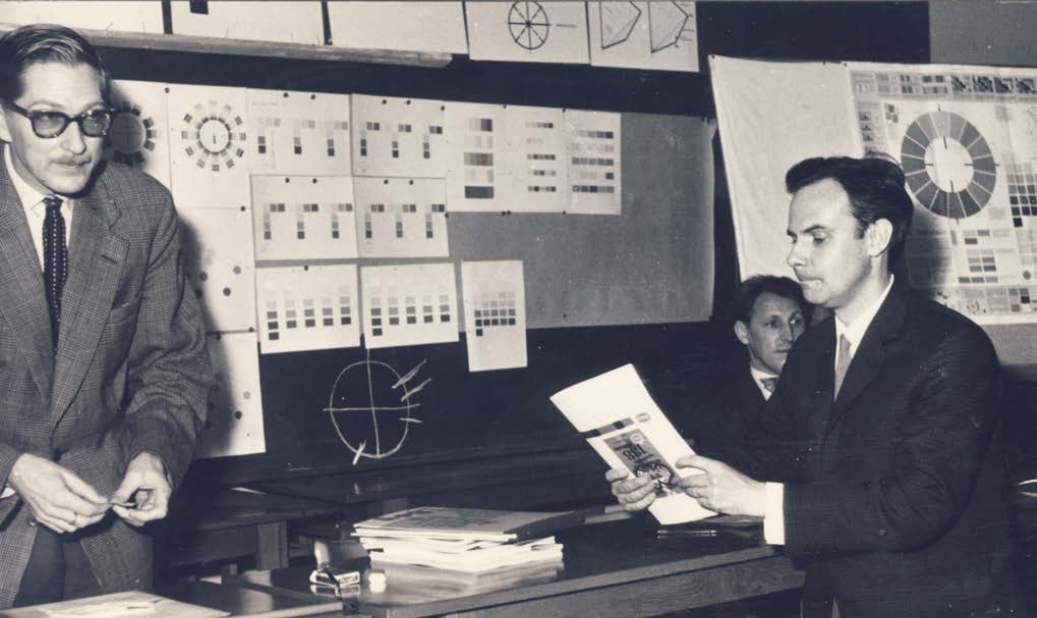
Interior shop, Ljubljana, 1965-75



Interior shop, Ljubljana, 1965-75



Interier shop, Ljubljana, 1965-75



Courses Colour and Form, 1961–64



STUDIO ZA
STANOVANJE
IN OPREMO
Ljubljana

SODOBNA OPREMA
TEKSTIL
Zavese, draperije, prti
in pregrinjala

TE

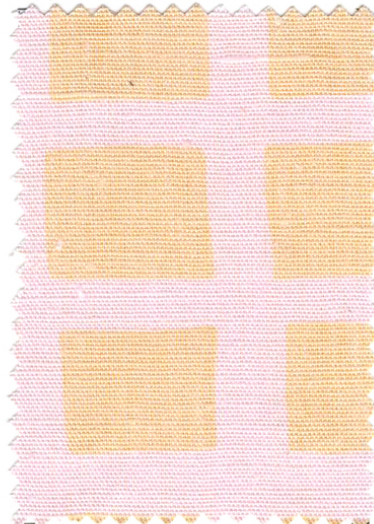
List TE:5
Marec 1964

Material: POLLANENO PLATNO
Širina: 140 cm
Ime: RUDI
Oblikovalec: Alenka Kham-Pišman



Art.5000 - 3328

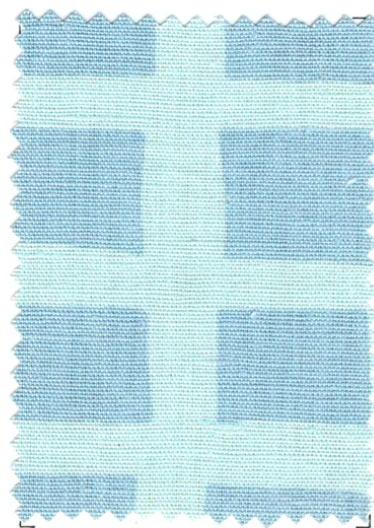
Material: POLULANENO PLATNO
Širina: 140 cm
Ime: RUDI
Dizajner: Alenka Kham-Pišman



Art.5000 - 3326



Art.5000 - 3325



Art.5000 - 3323



STUDIO ZA
STANOVANJE
IN OPREMO
Ljubljana

SODOBNA OPREMA
TEKSTIL
Blago za pohištvo

TE

List TE:11
Junij 1963

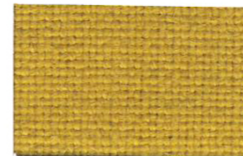
Material: VOLNENO BLAGO ZA POHIŠTVO

Vzorec: "PLATNO"

Širina: 130 cm



Št.art. 6064/73-18



Št.art. 6064/73-19



Št.art. 6064/73-20



Št.art. 6064/49-21



Št.art. 6064/49-22



Št.art. 6064/49-23



Št.art. 6064/21-45



Št.art. 6064/21-46



Št.art. 6064/21-47



Št.art. 6064/05-17



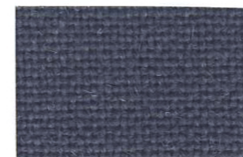
Št.art. 6064/05-18



Št.art. 6064/05-19



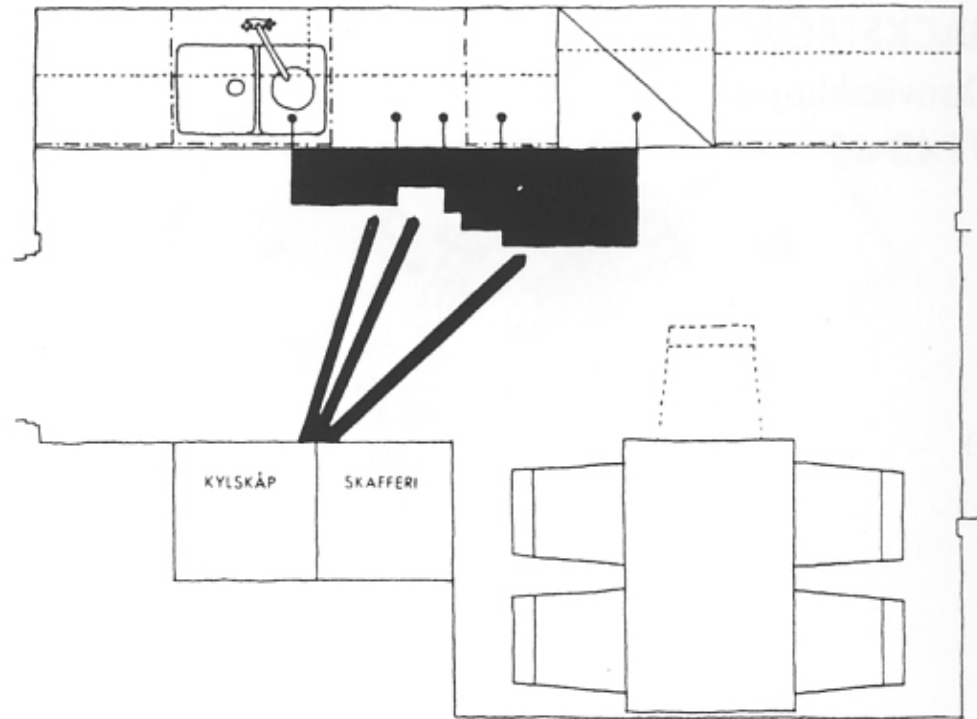
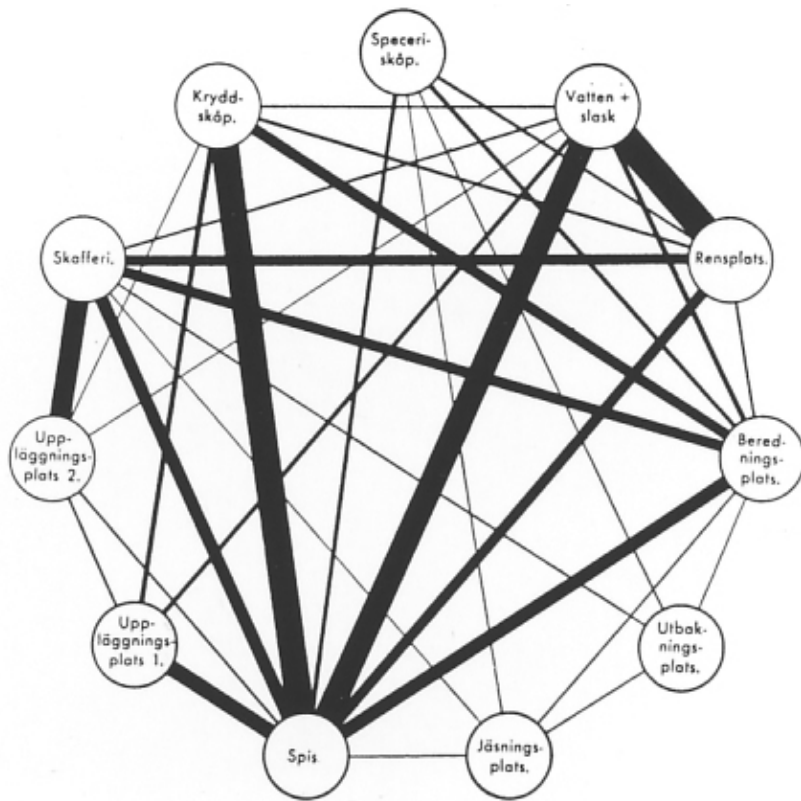
Št.art. 6064/93-25



Št.art. 6064/93-26



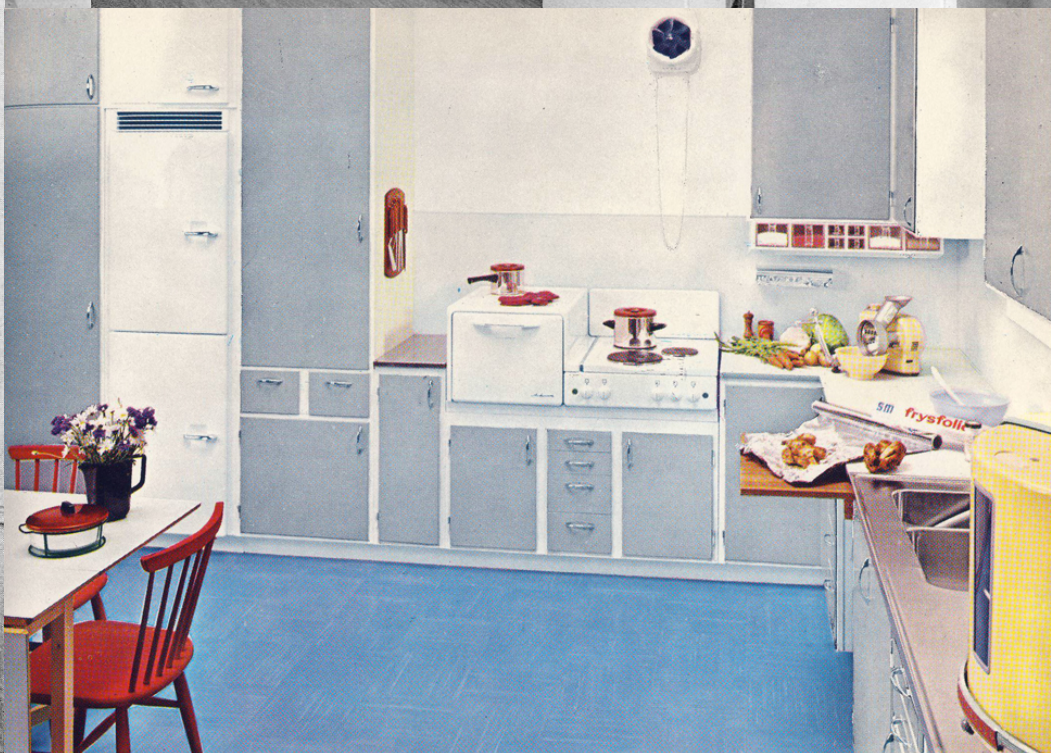
Št.art. 6064/93-27



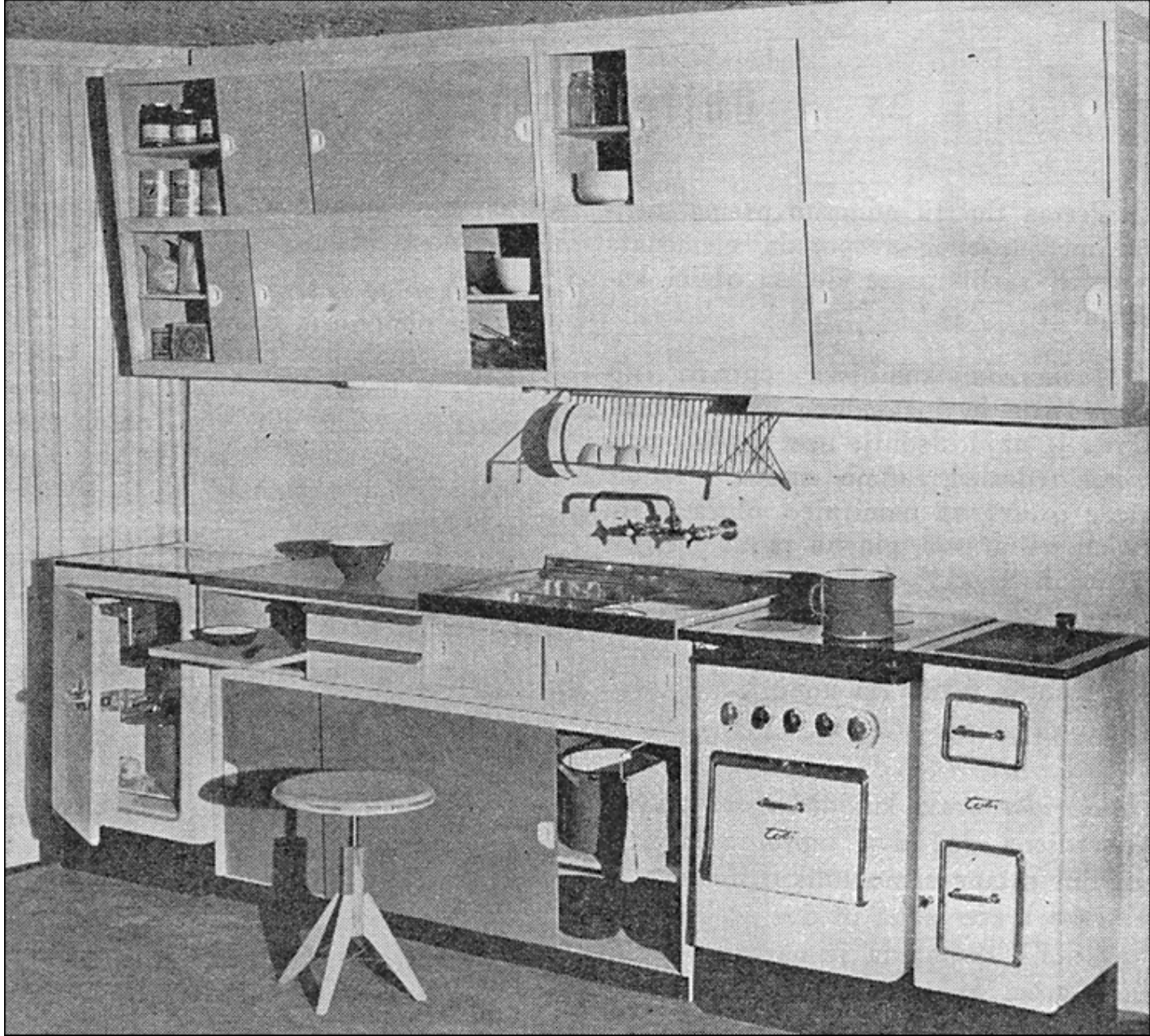
Swedish measurements of time and space needed for domestic functions in the kitchen (1945)



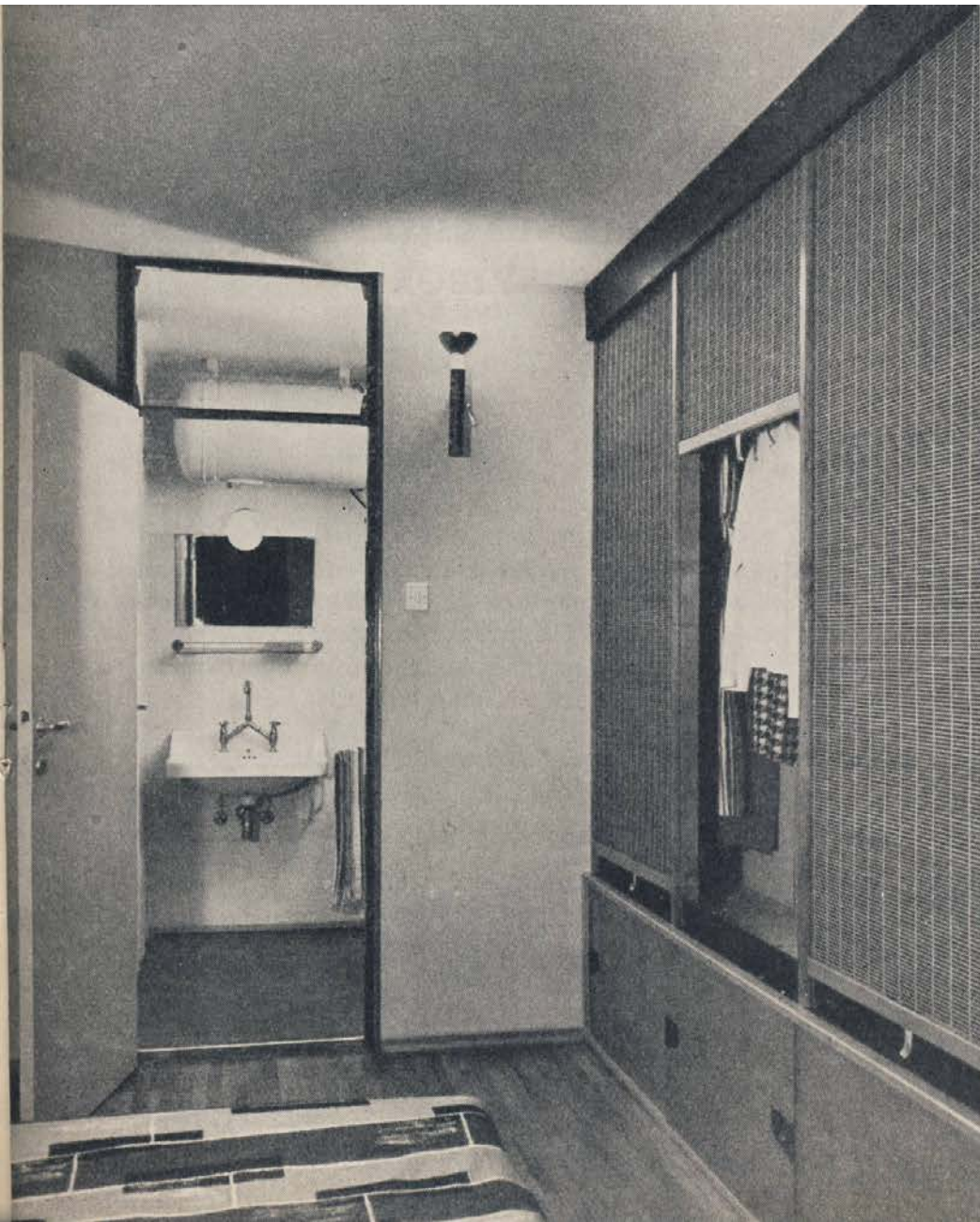
Swedish surveys in test kitchen, 1945







Modern „Swedish“ kitchen
Branka Tancig, 1954





Kitchen Svea

Arhitects France in Marta Ivanšek, 1960