

## From infrastructure to urban interiors

Manon Mollard



### Nine Elms

‘The greatest transformational story  
at the heart of the world’s greatest city’

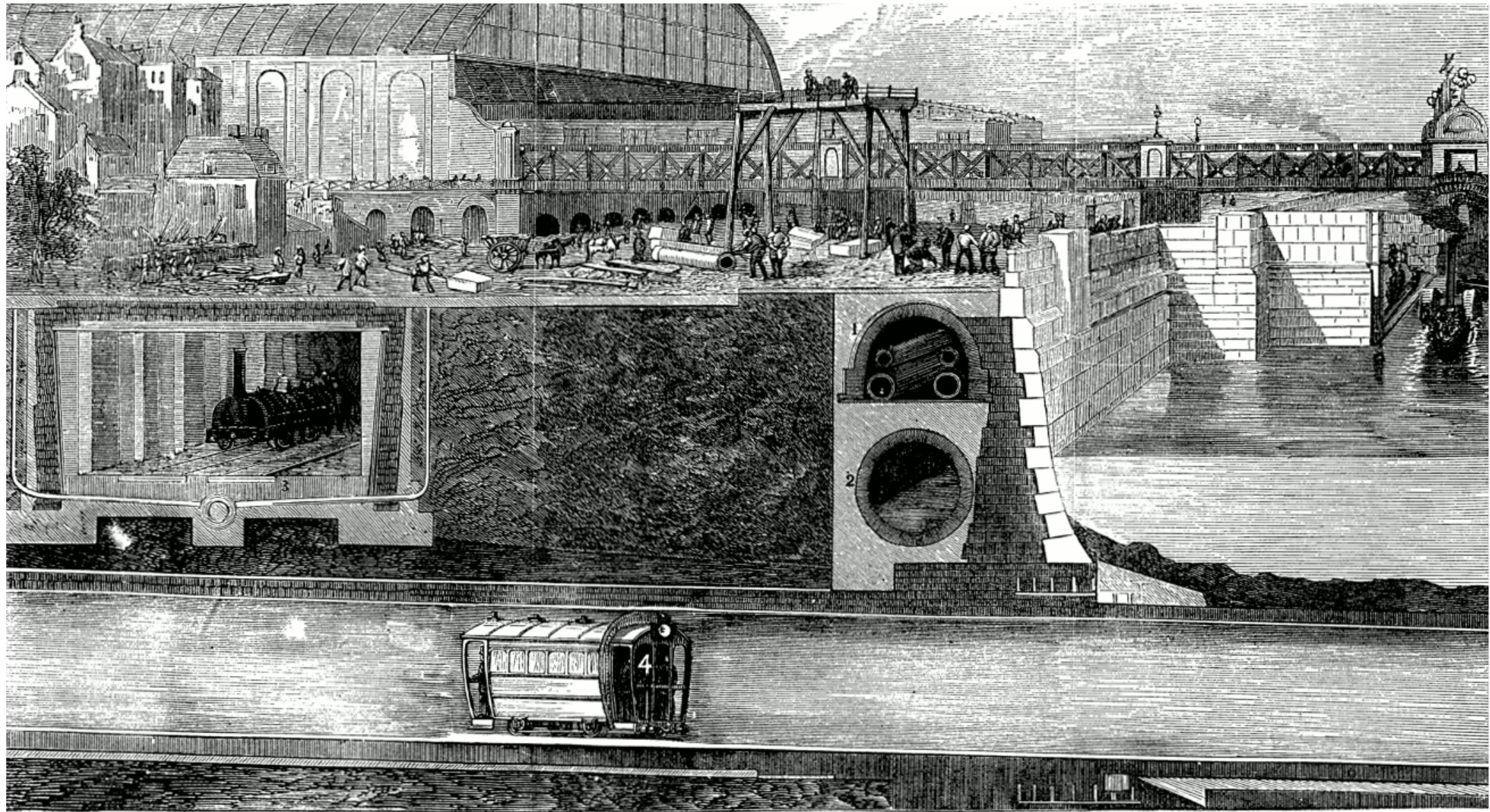




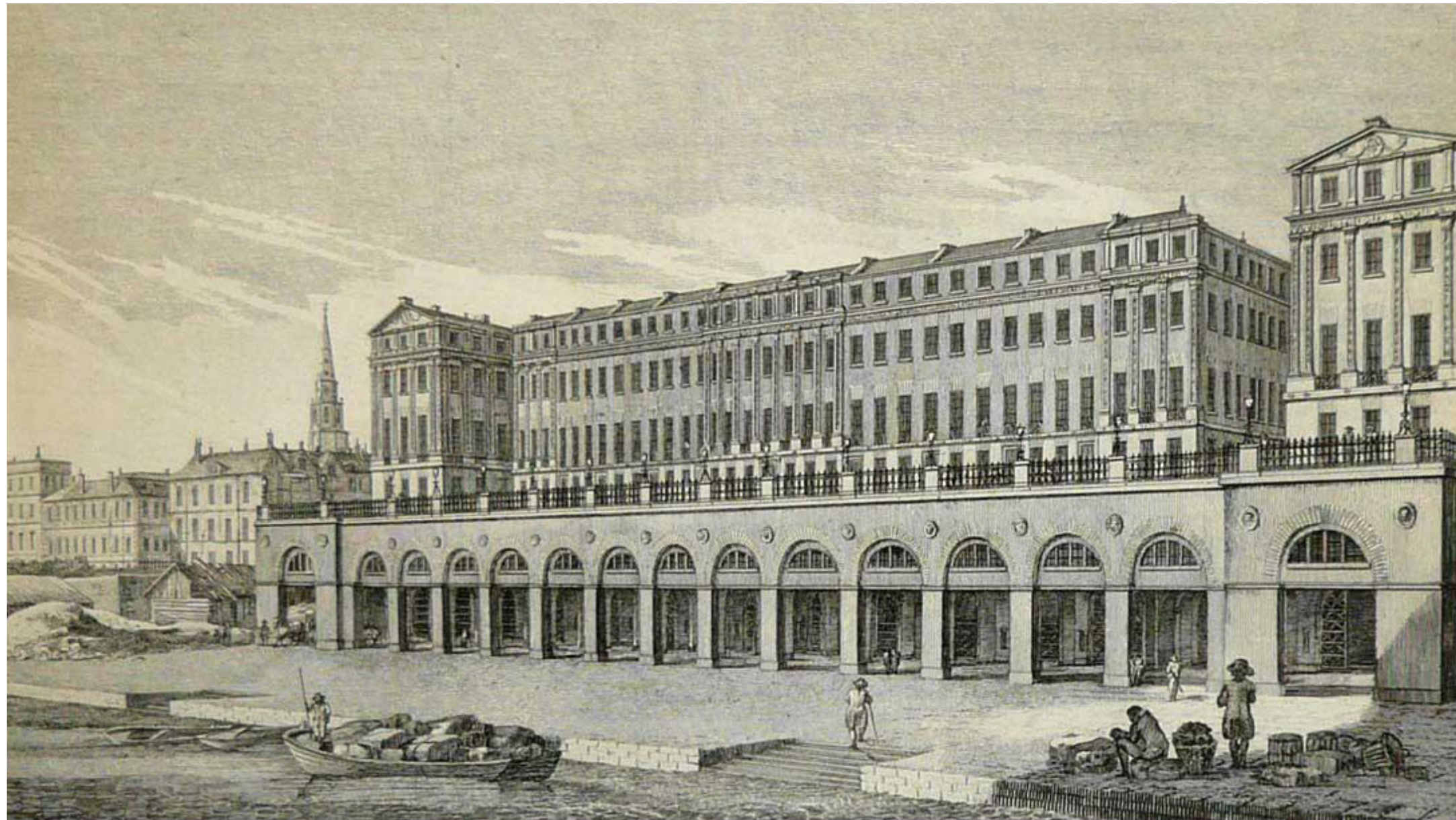
Thames Tideway

‘World leading British engineering at its best’  
‘We will deliver a lasting legacy for London’



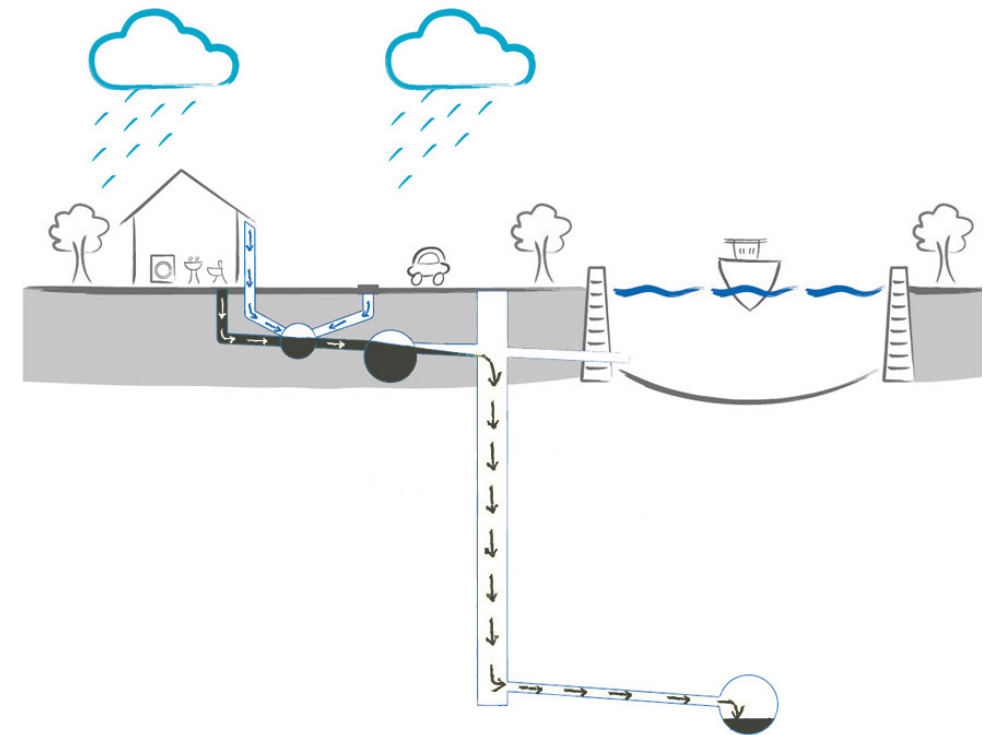






The Adam Brothers' Adelphi





## Overflows in Thames

Safety Feature:

overflow always goes into Thames



57 combined sewage overflows along Tidal Thames



As little as 2 mm of rainfall can trigger a discharge

## Before Super Sewer



used occasionally in Victorian times, overflows are now once a week



39M tons of sewage overflows into Thames every year

## After Super Sewer



overflows expected 2 to 3 times a year

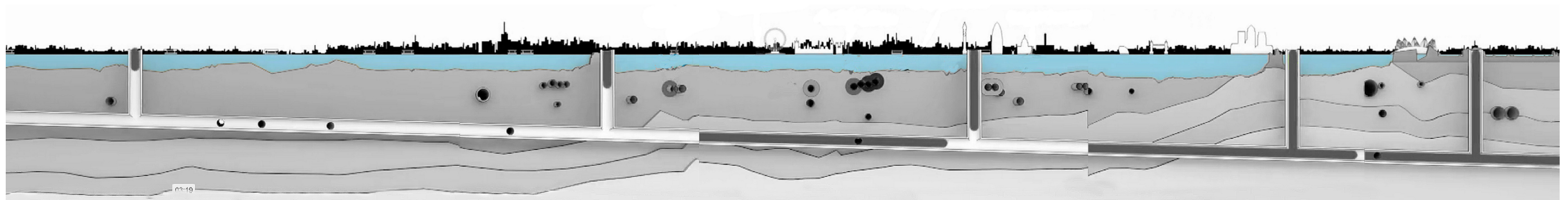


sewage still overflows into Thames every year



sewage and surface water still mixed

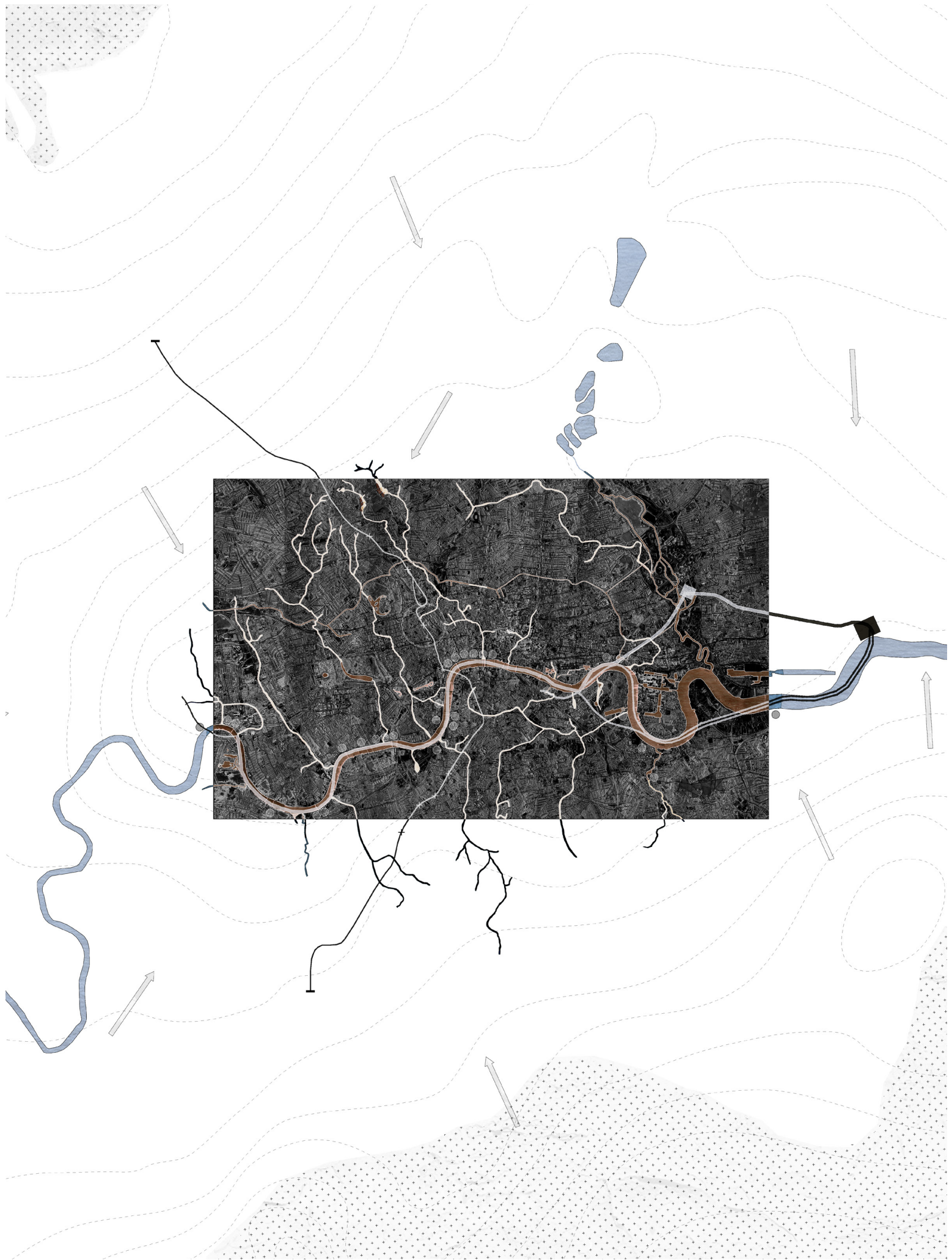
water still travels very long distance, with up to 41% of leakages in pipes















Circulation



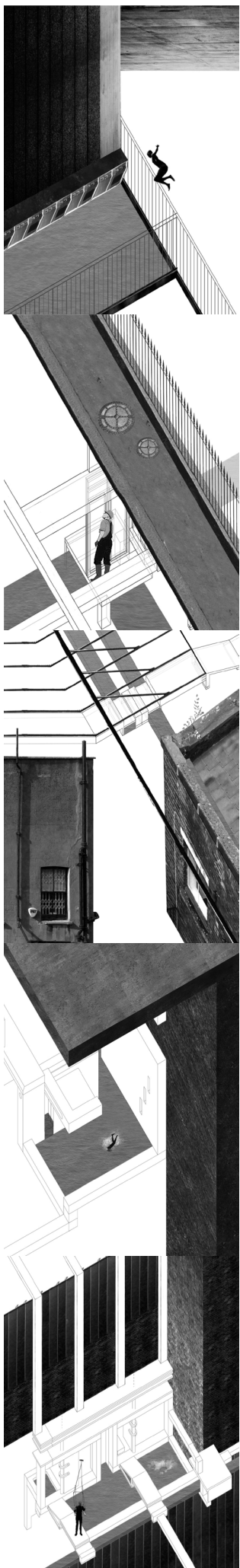
Collection



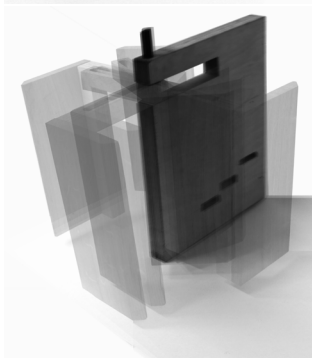
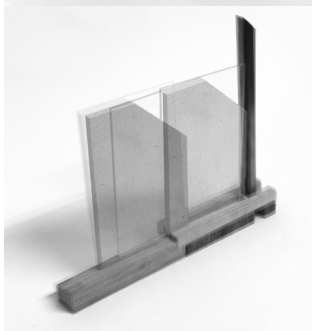
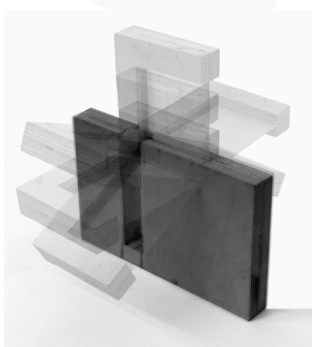
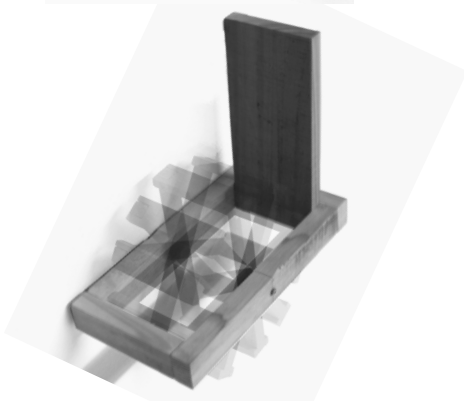
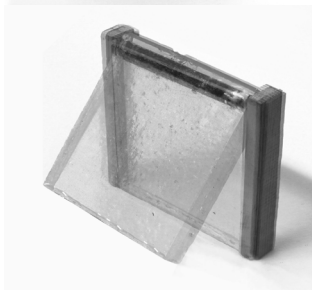
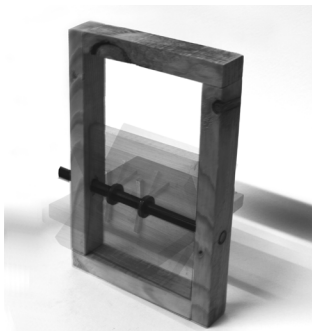
Filtration



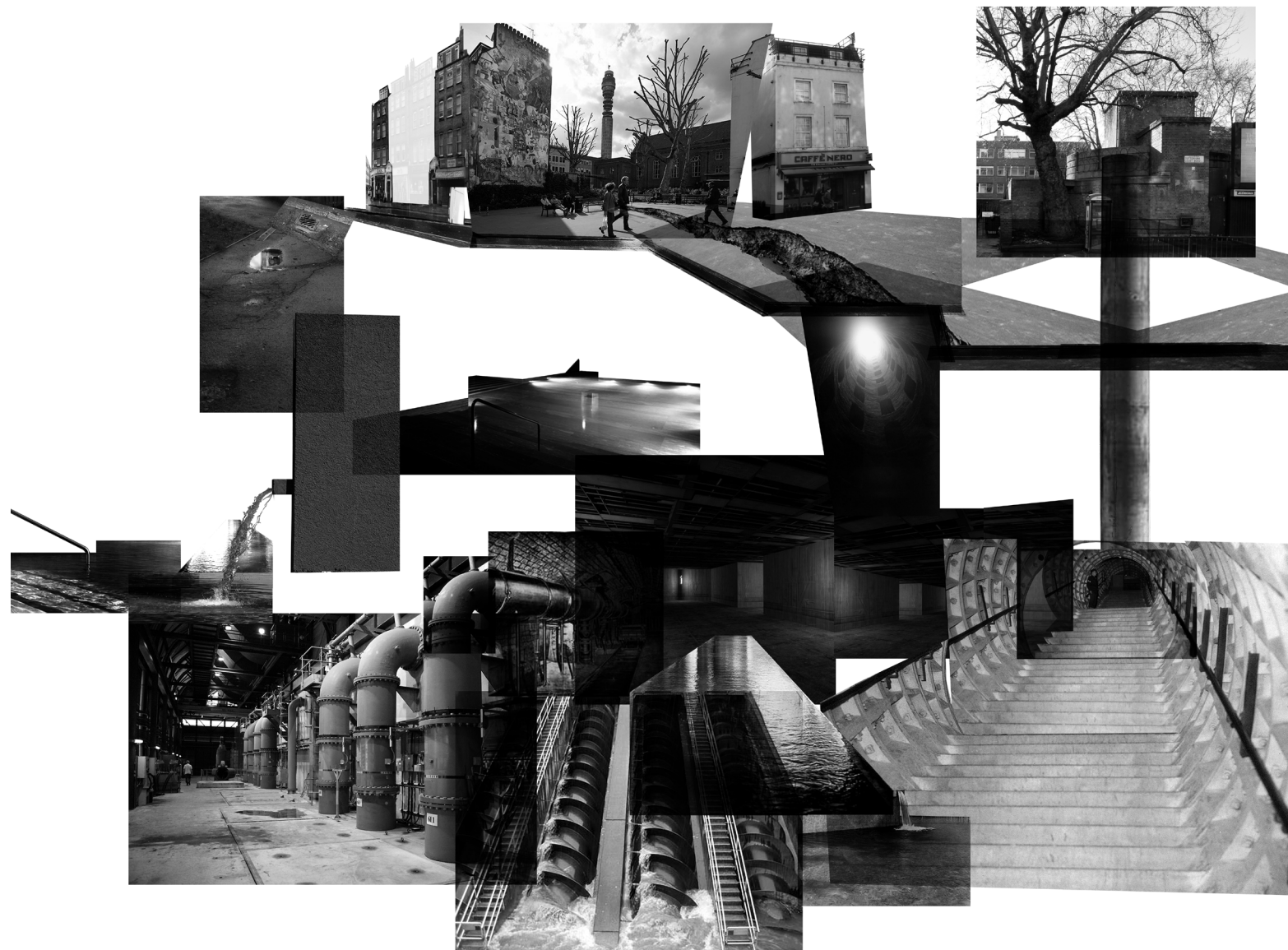




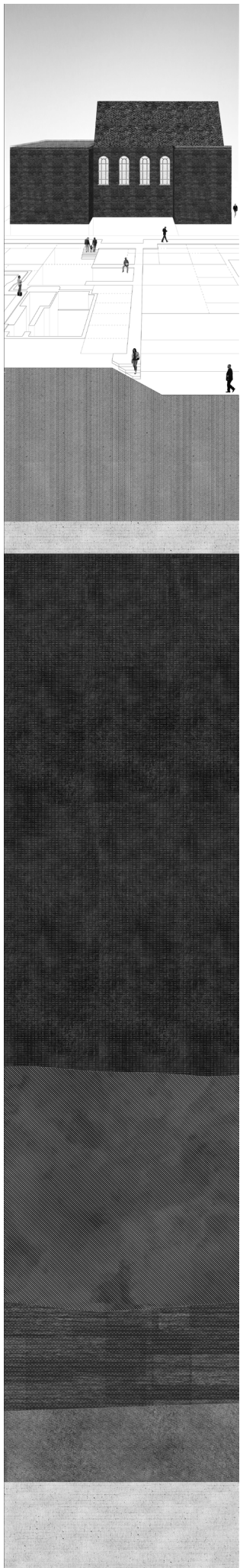








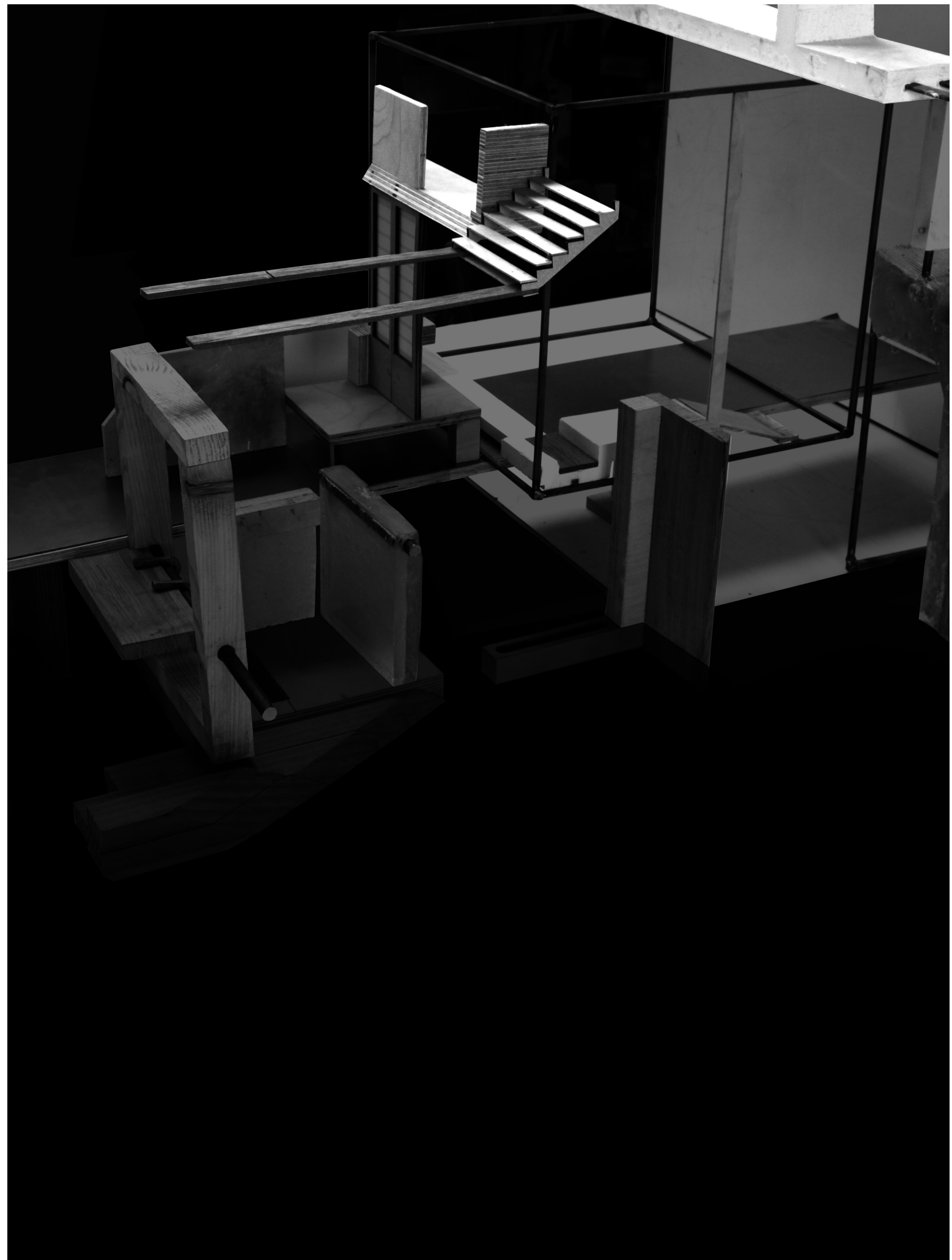




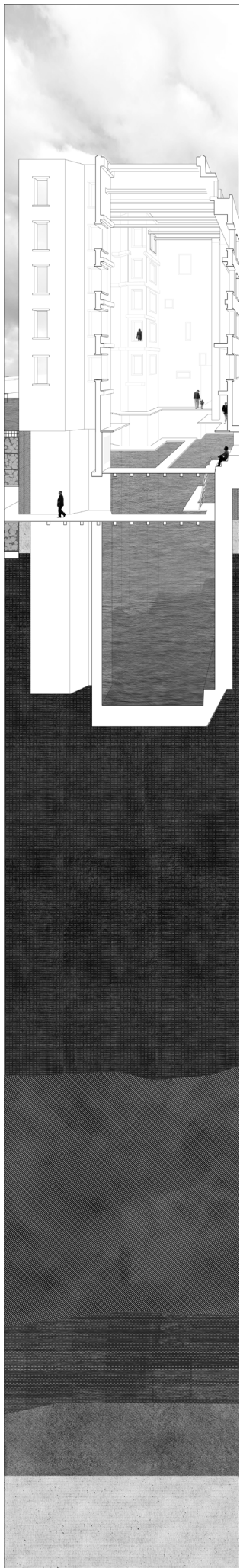




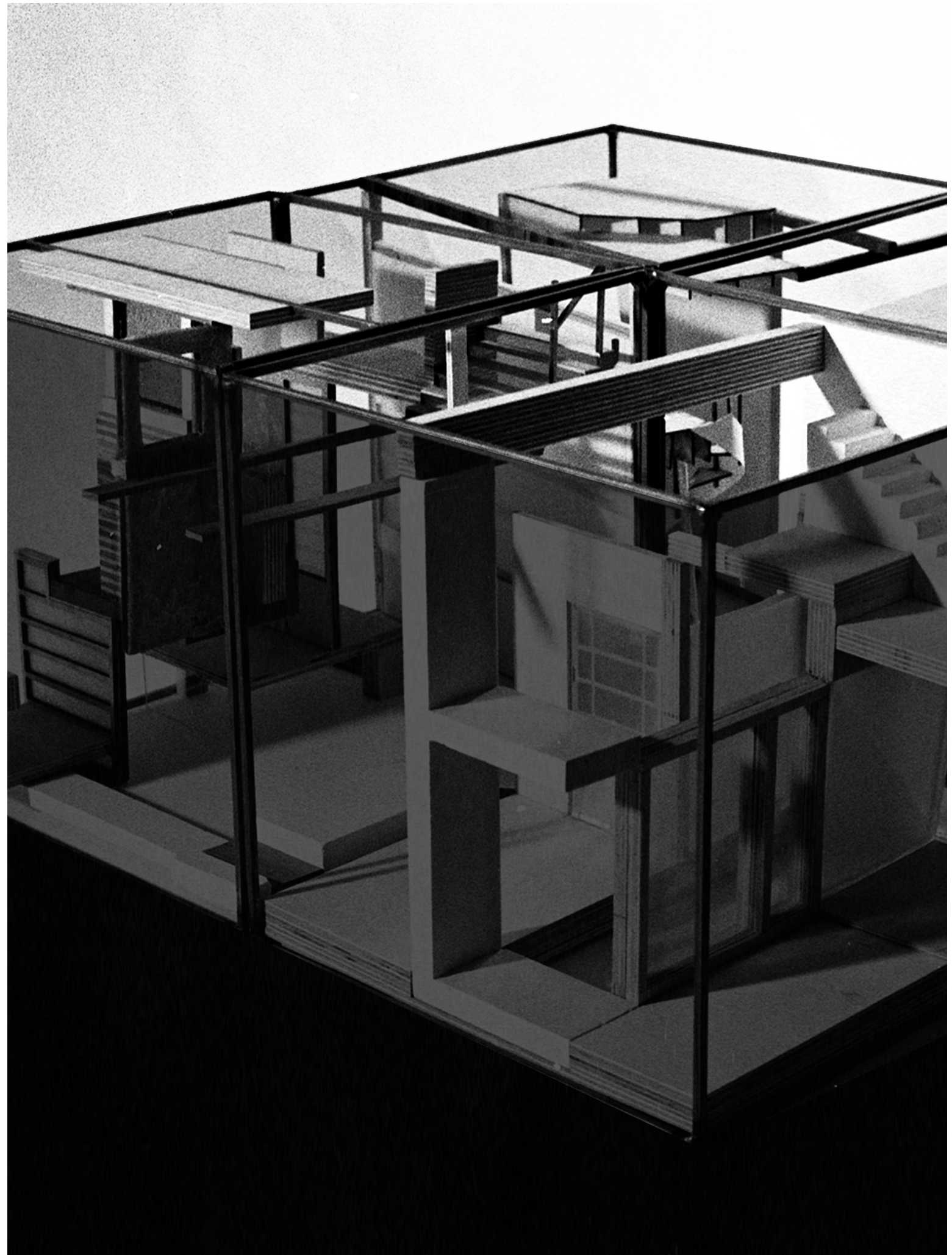




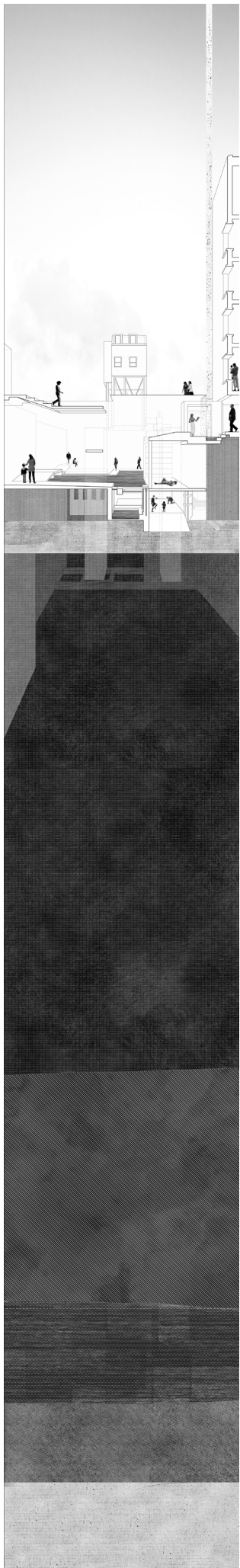




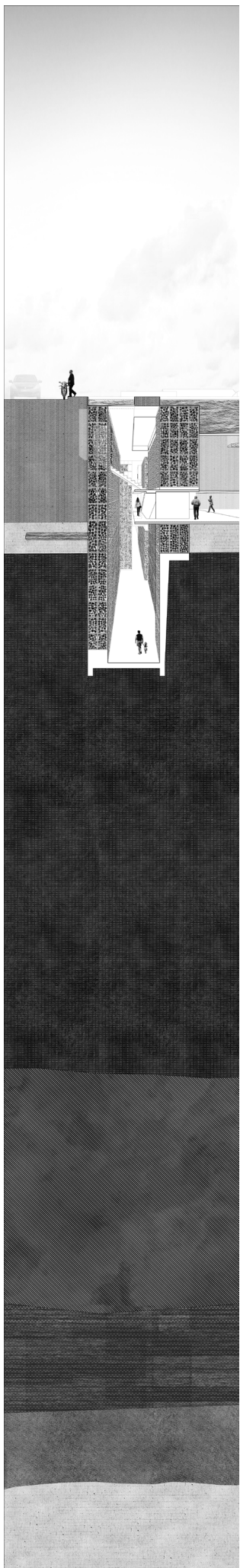


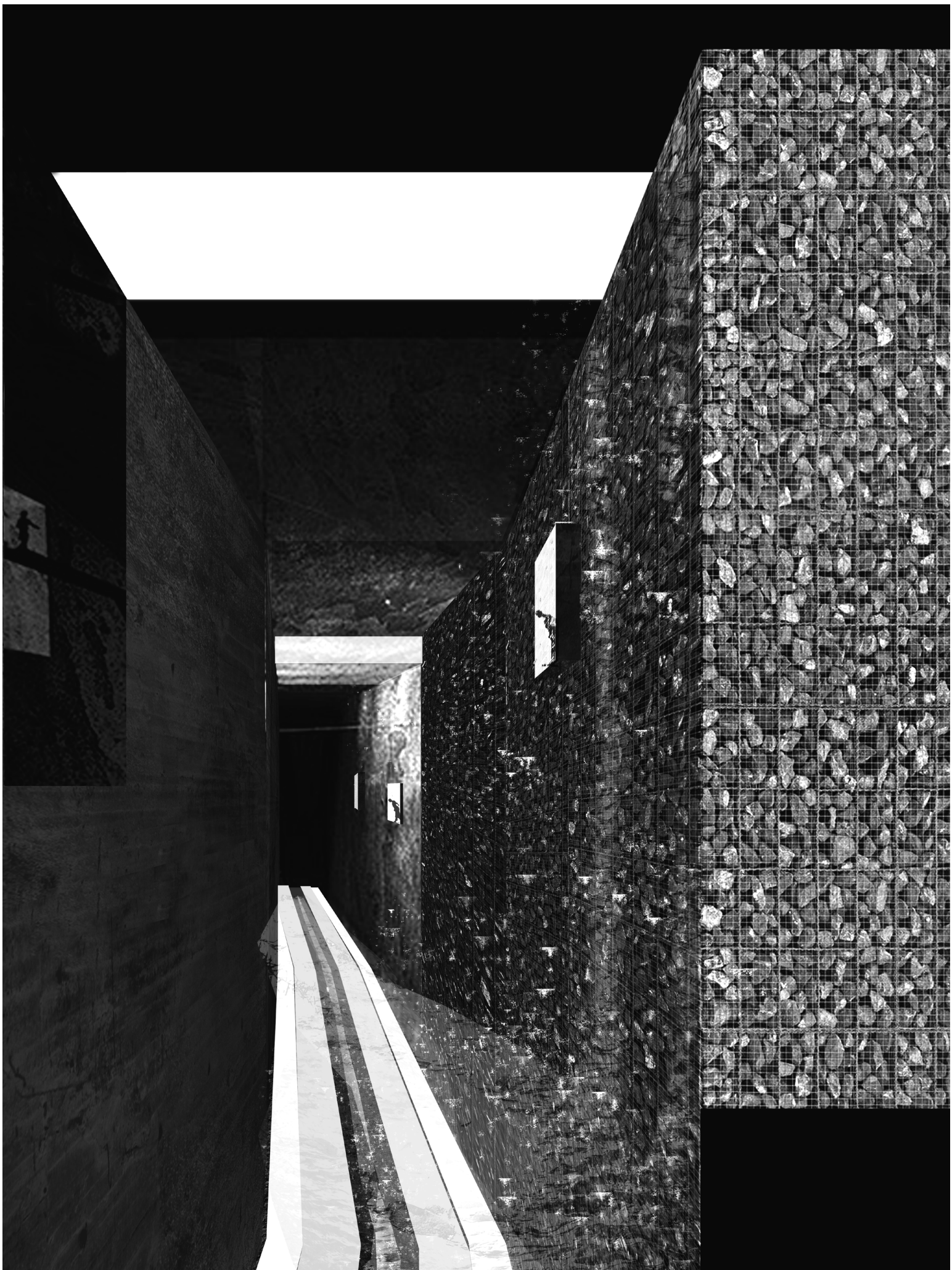




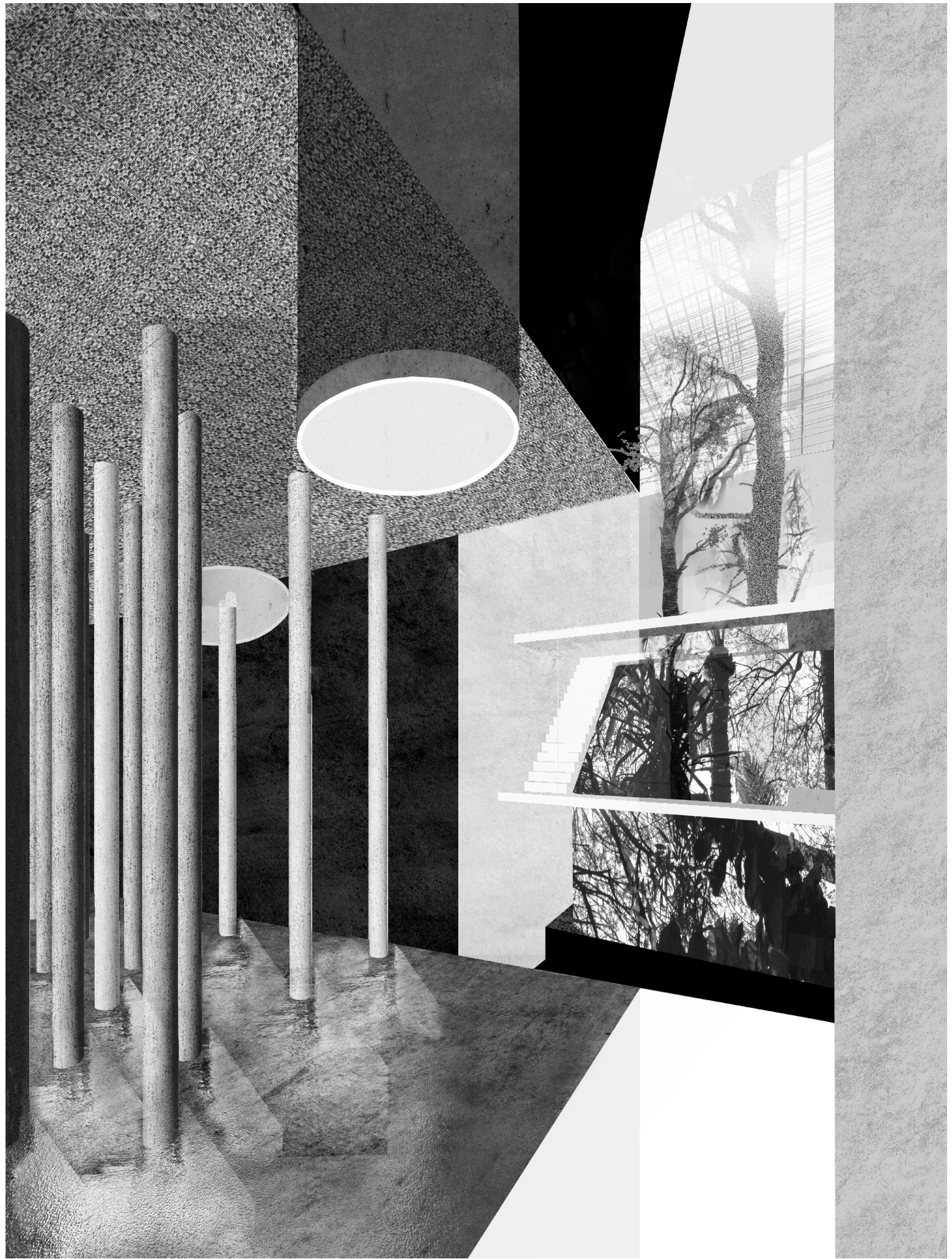






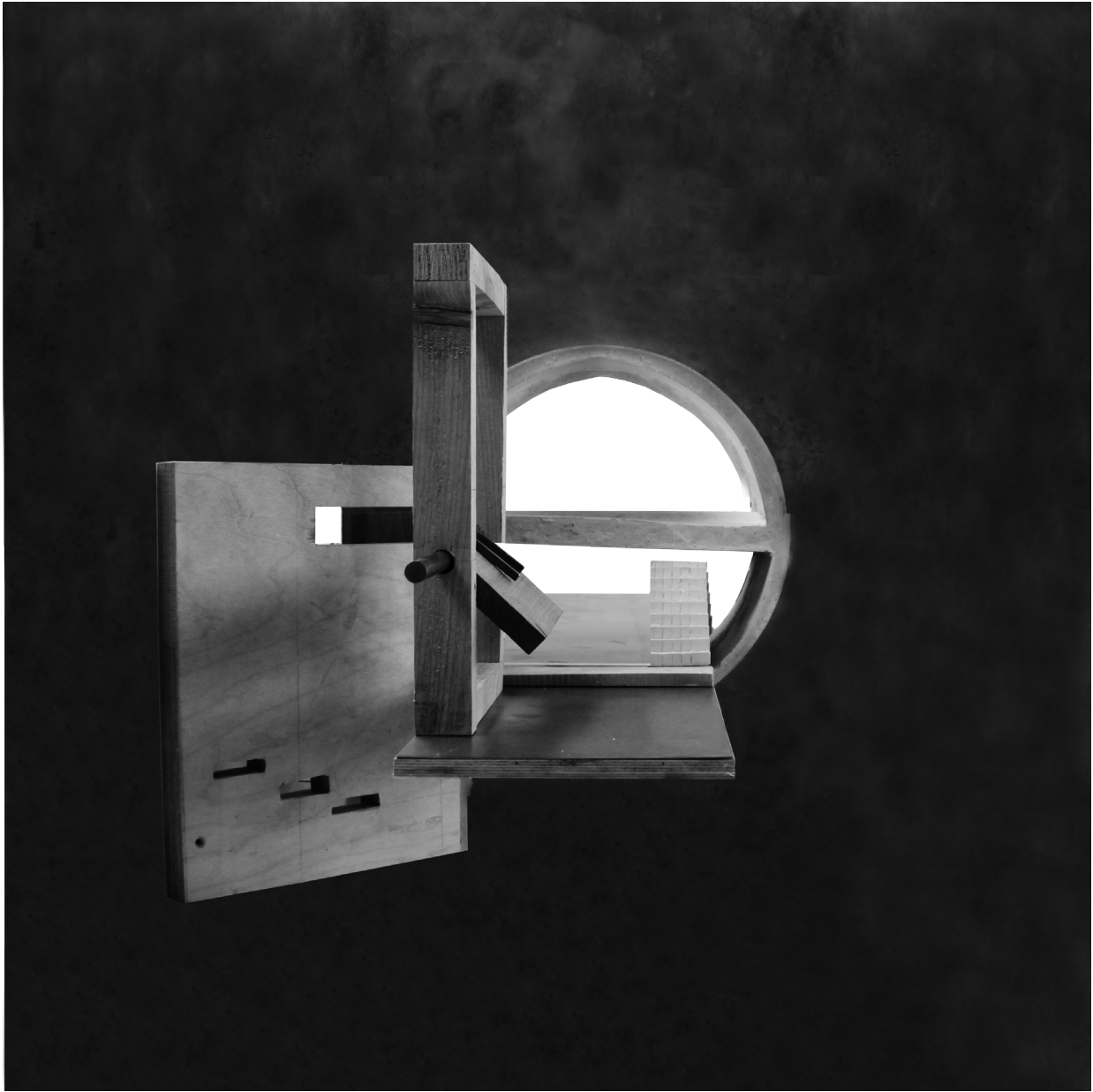






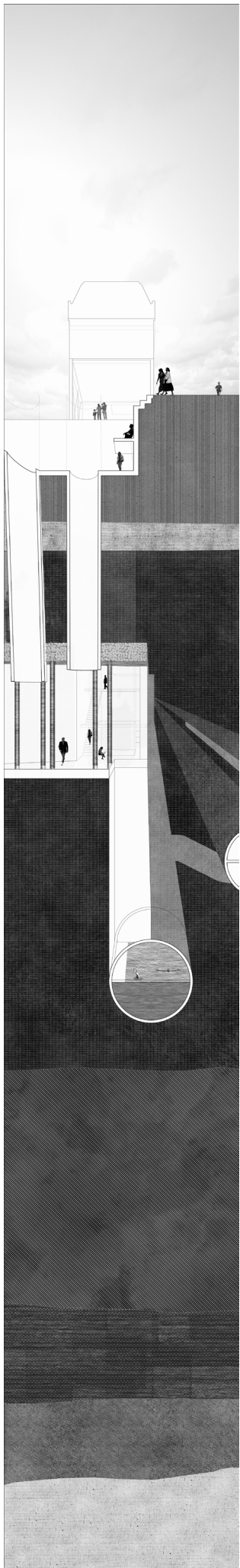








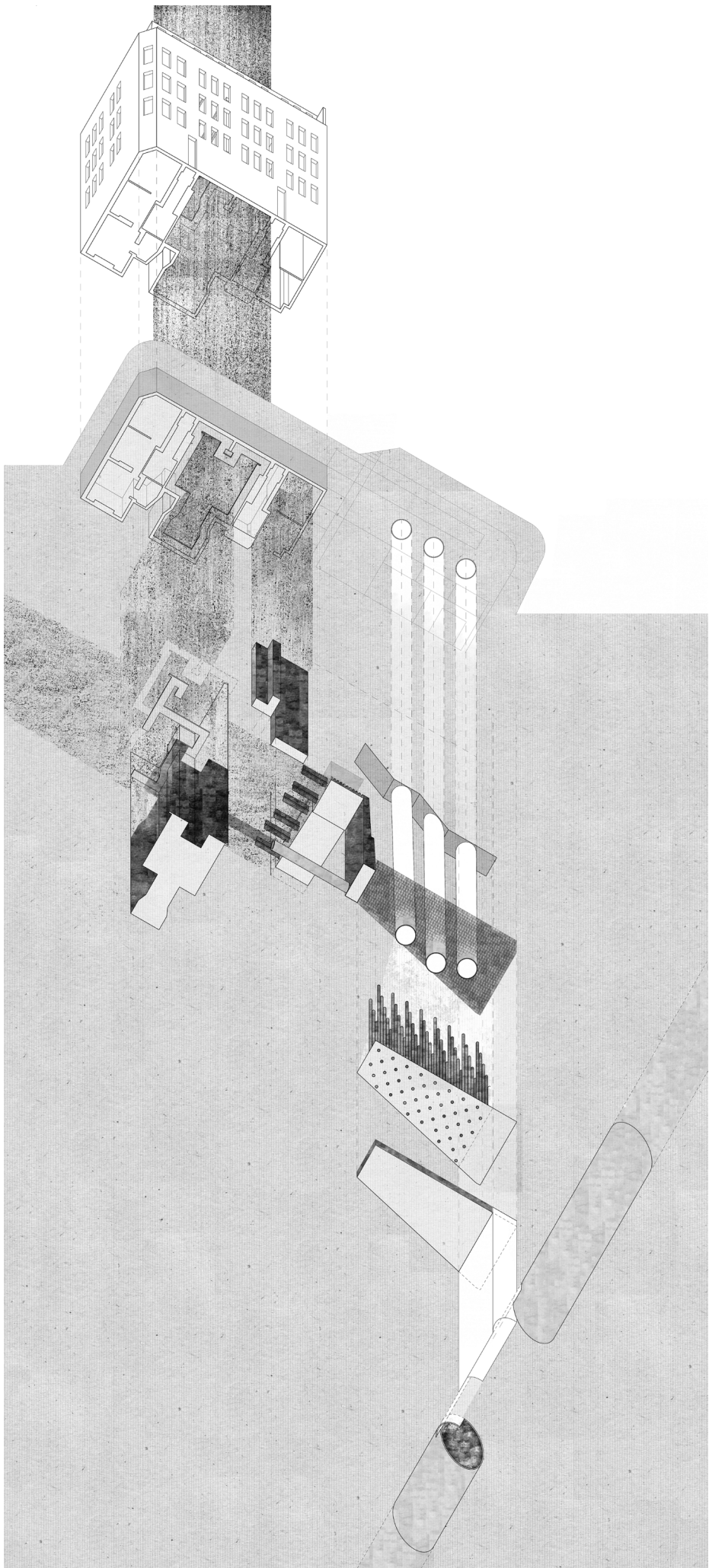




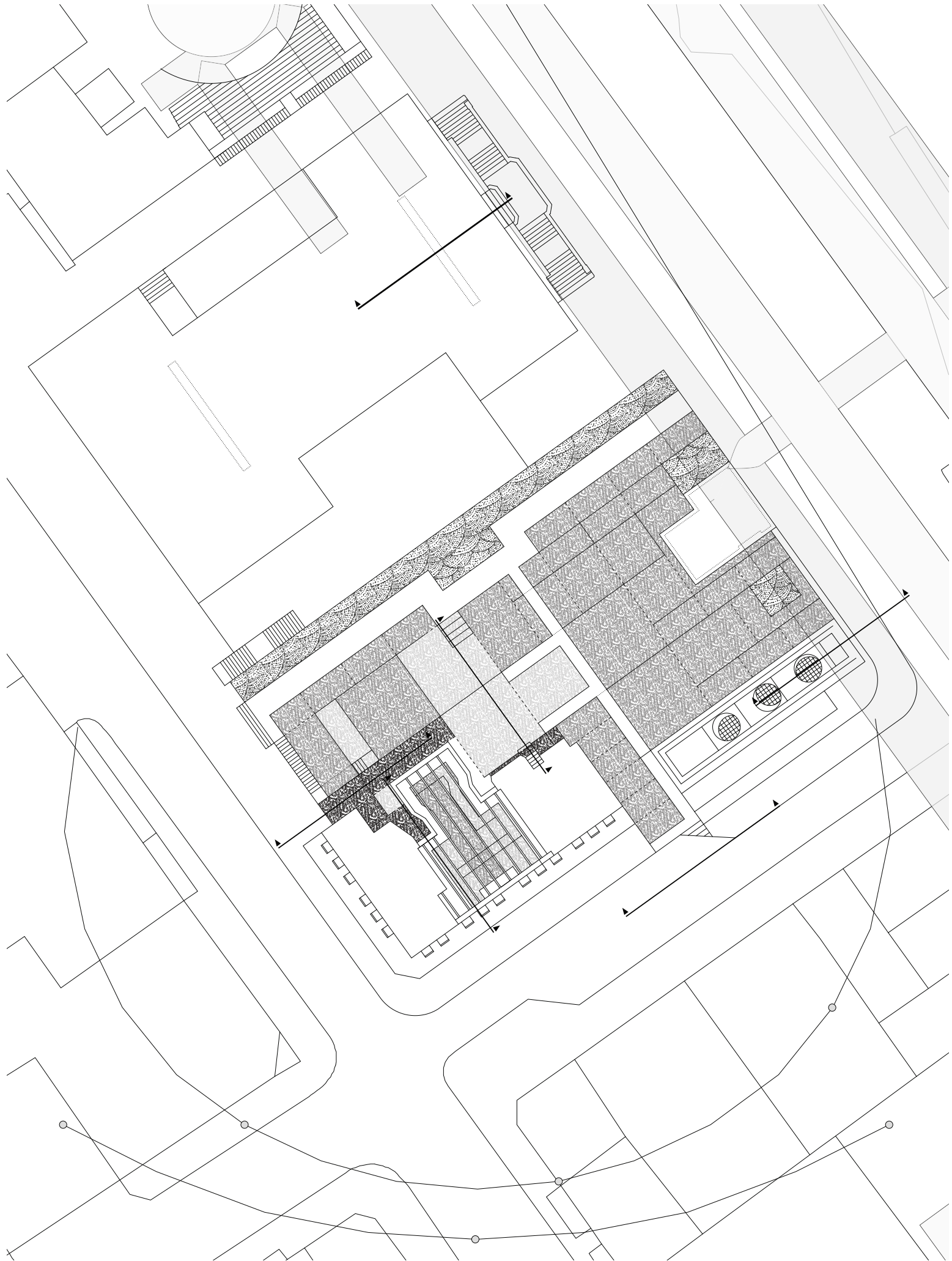


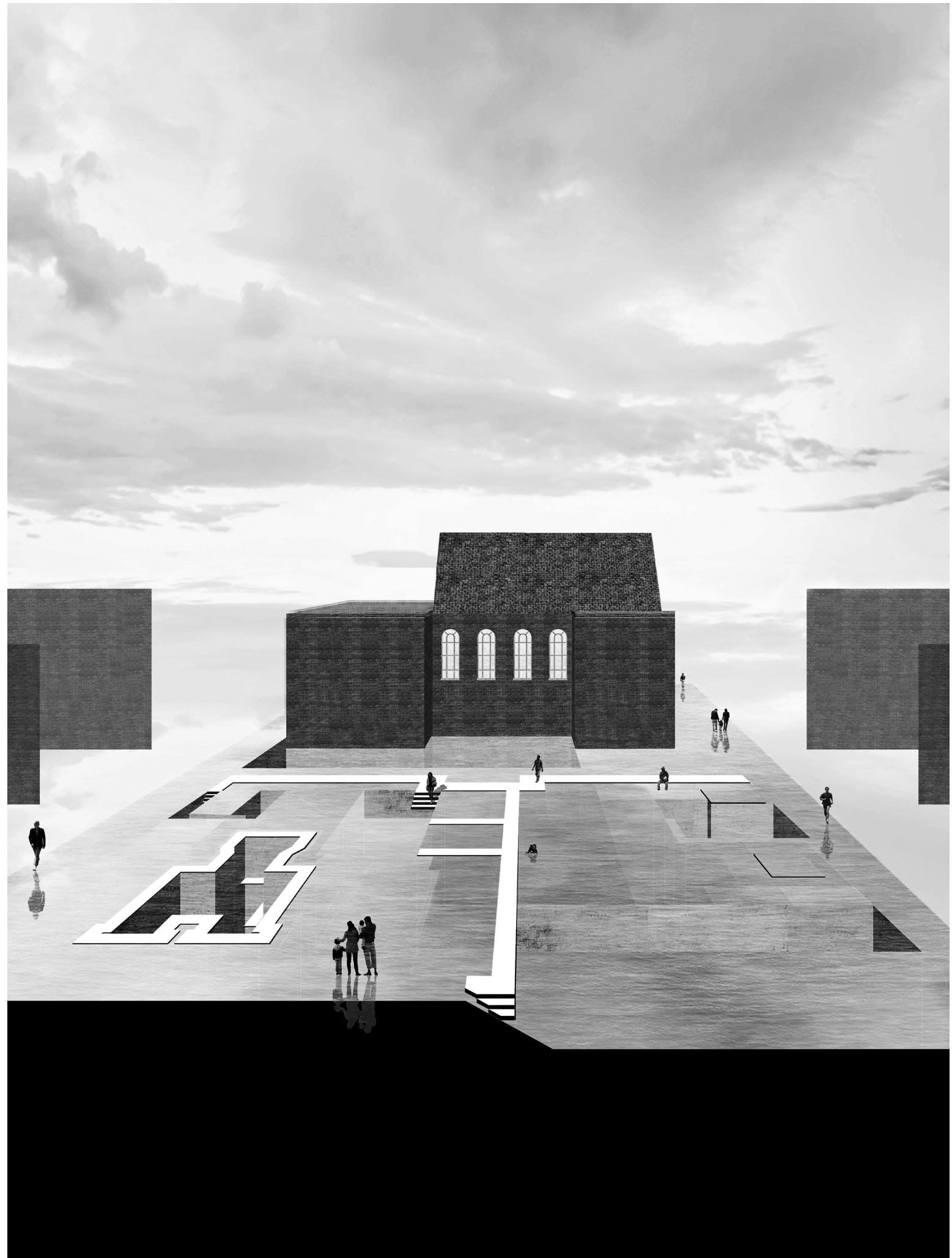




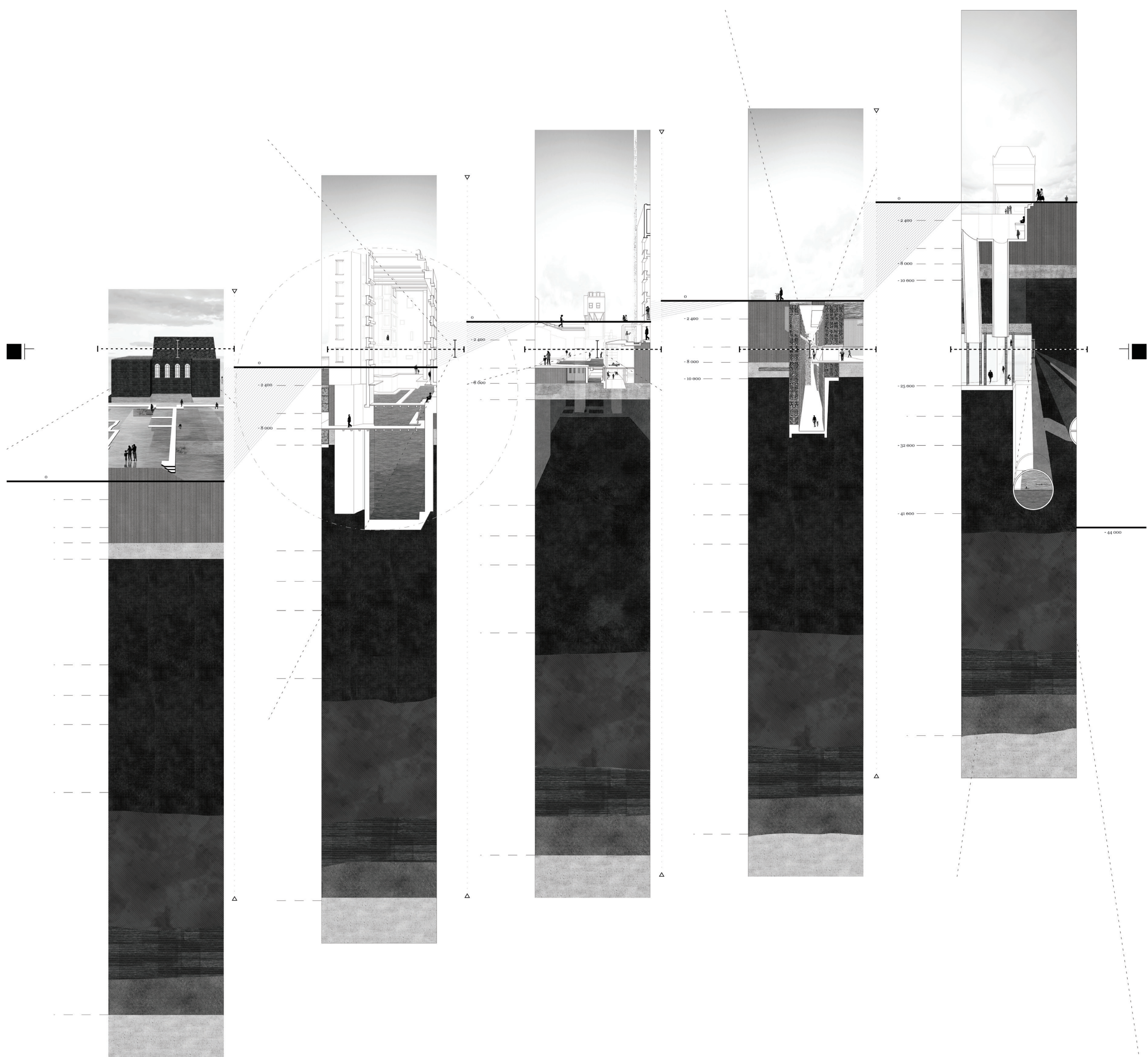












Thank you