

Guerilla Architects



GA

Stationstelle  
of Design  
film mission  
graz

Museum  
n

DA

We do not think that one must build big  
to create large value















ROTH

HÖRGERÄTE  
FACHINSTITUT  
SEIT 1907







# PROGRAMM

18. Februar 19:00 OPENING
26. Februar 18:00-19:30 Konzept Dinner feat. The Real Junk Food Project  
20:00-21:30 Konzept Dinner feat. The Real Junk Food Project
05. März 16:00-17:00 Workshop „No waste, but great taste!“  
von Sustainable Food Academy
- 18:00-21:00 Filmvorführung „10 Milliarden – wie werden alle satt?“  
in Anwesenheit des Regisseurs Valentin Thurn
12. März 18:00-19:30 Konzept Dinner feat. Restlos Glücklich  
20:00-21:30 Konzept Dinner feat. Restlos Glücklich
18. März 18:00 Schnippeldisko feat. Wam Kat // Fläming Kitchen  
von Slow Food Youth



opening soon

# MehrWert

19. Februar - 18. März 2017

**A TEMPORARY WASTE-FREE RESTAURANT**

**GUERRILLA ARCHITECTS . ENTRETEMPO KITCHEN GALLERY . TABEA MATHERN**

Vernissage: 18. Februar 19:00

Entretempo Kitchen Gallery Senefelder Straße 29, 10437 Berlin

[www.facebook.com/MehrWertRestaurant](http://www.facebook.com/MehrWertRestaurant)  
[www.entretempo-kitchen-gallery.com](http://www.entretempo-kitchen-gallery.com)

# DIE IDEE

Jährlich werden allein in Deutschland mehr als die Hälfte der produzierten Lebensmittel weggeworfen. Die Gründe dafür sind vielseitig und oft vermeidbar: kalkulierte Überproduktion, schlechte Lagerung, die vermeintlich falsche Optik...

MehrWert ist eine raumgreifende Installation, die sich der großen Herausforderung der Müllvermeidung stellen und ihren Beitrag leisten will. Das temporär erbaute Restaurant versteht sich dabei sowohl als interaktive Ausstellung als auch als Vernetzungsort für alle, die sich informieren, engagieren und natürlich lecker essen wollen. Ein offener Dialog bei Tisch über das was uns alle wirklich satt macht. Mit Wertschätzung, neuen Ideen und einer großen Prise Mut.



Partner



SUSTAINABLE  
FOOD  
ACADEMY



Sponsoren





{THE EUROPEAN DREAM}



New borders

PURE/TREND



New identities

© Youtube





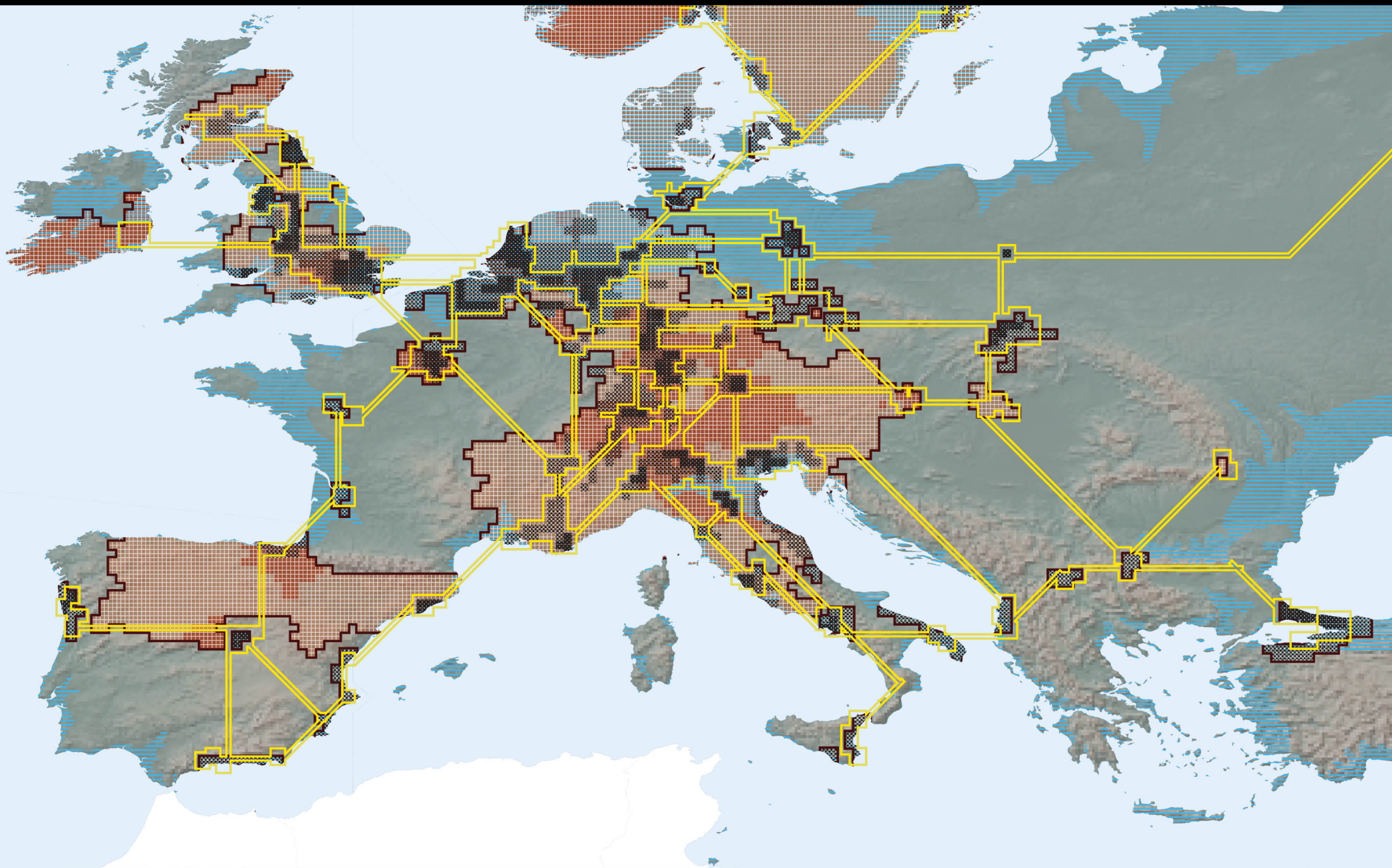




WELCOME

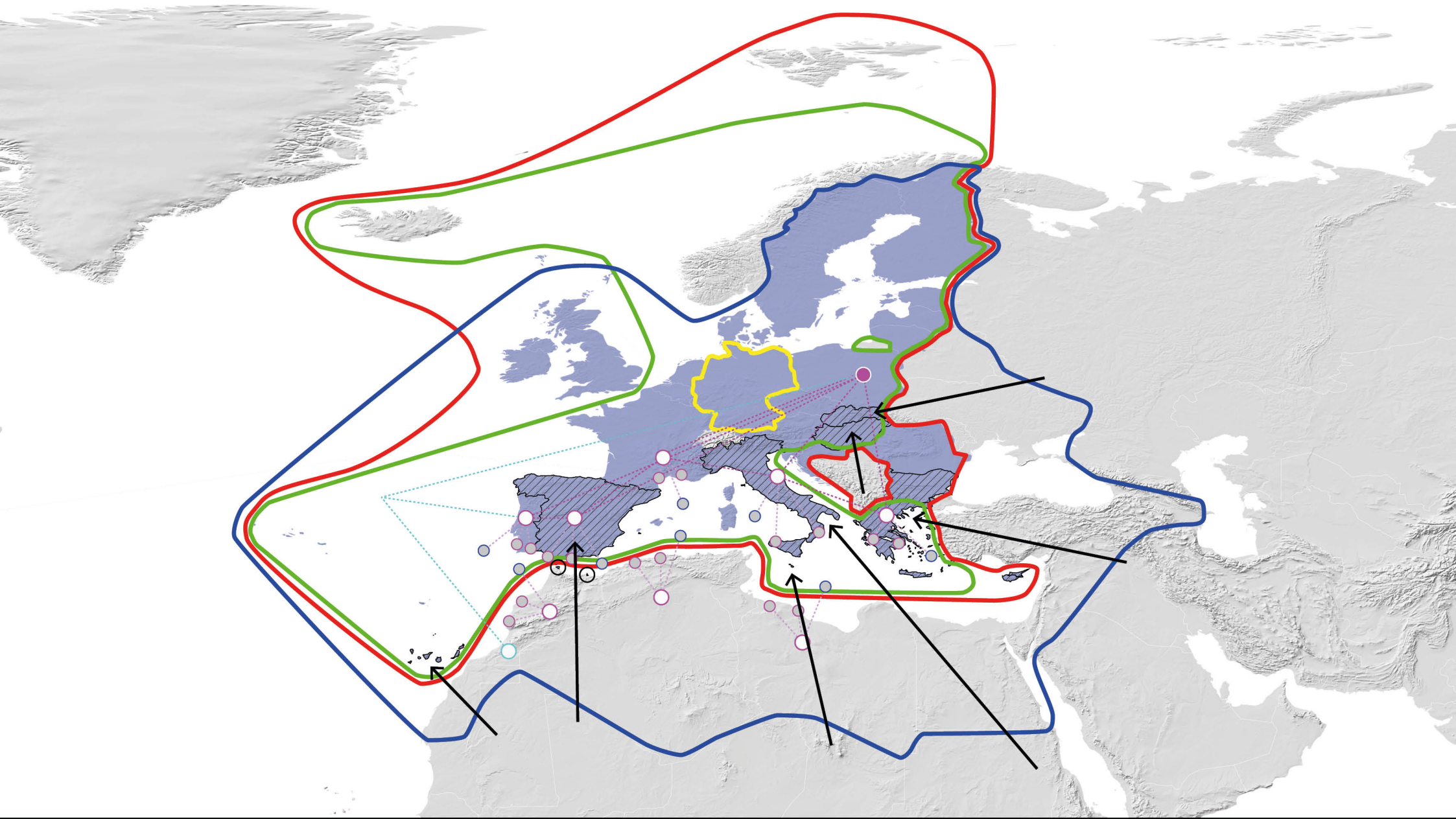


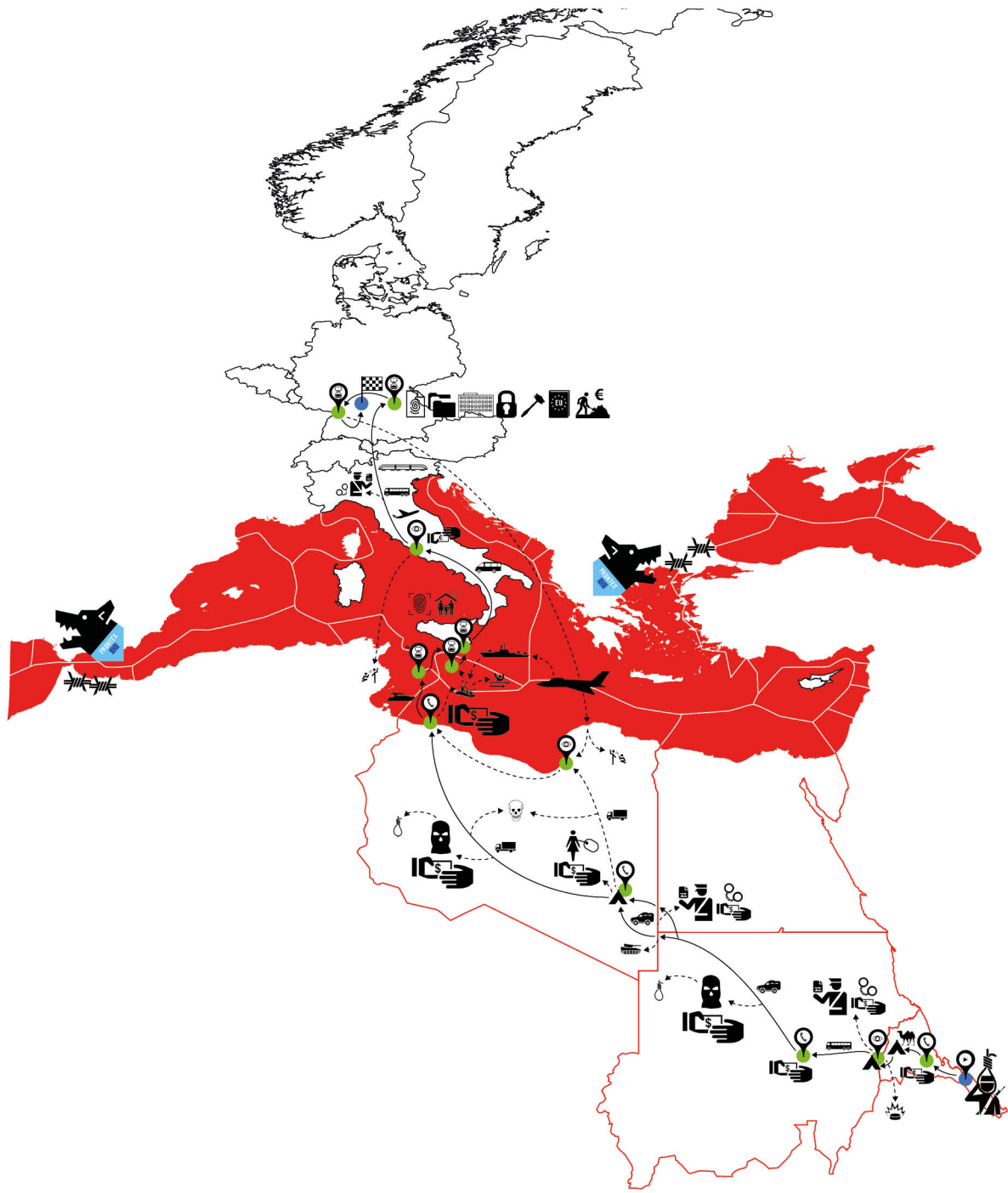




**WE WANT  
YOU**







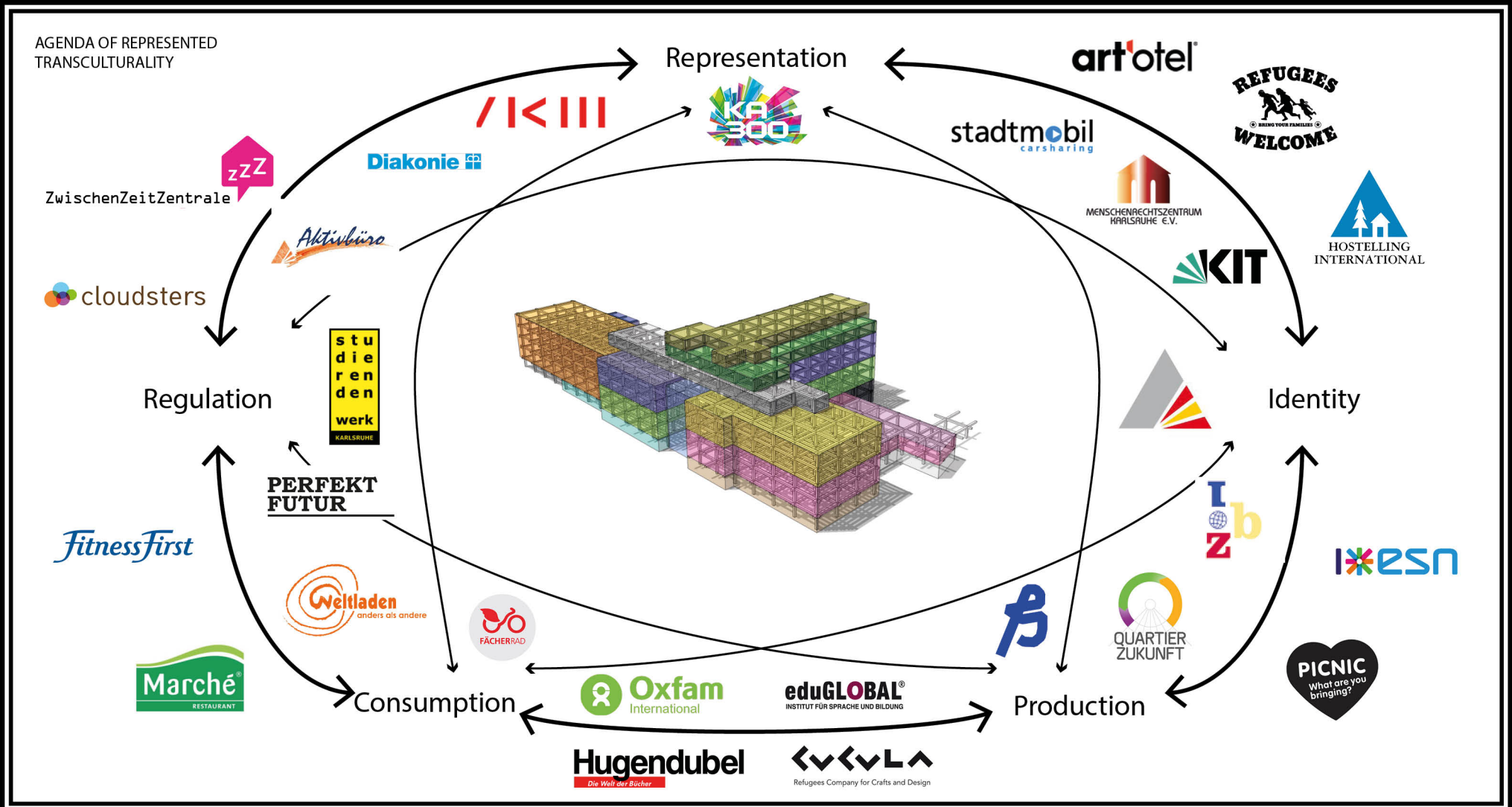




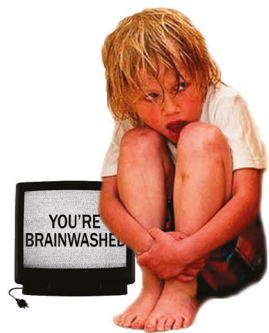
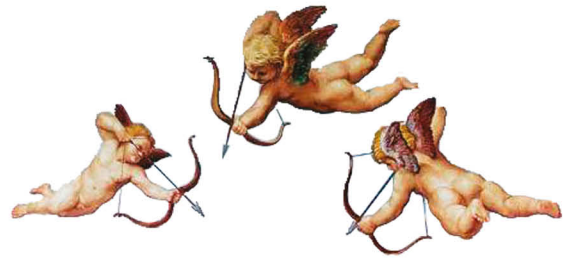
# European foreign affairs VS European home affairs







The new „welcome centre“



{THE EUROPEAN DREAM}



{THE EUROPEAN DREAM}

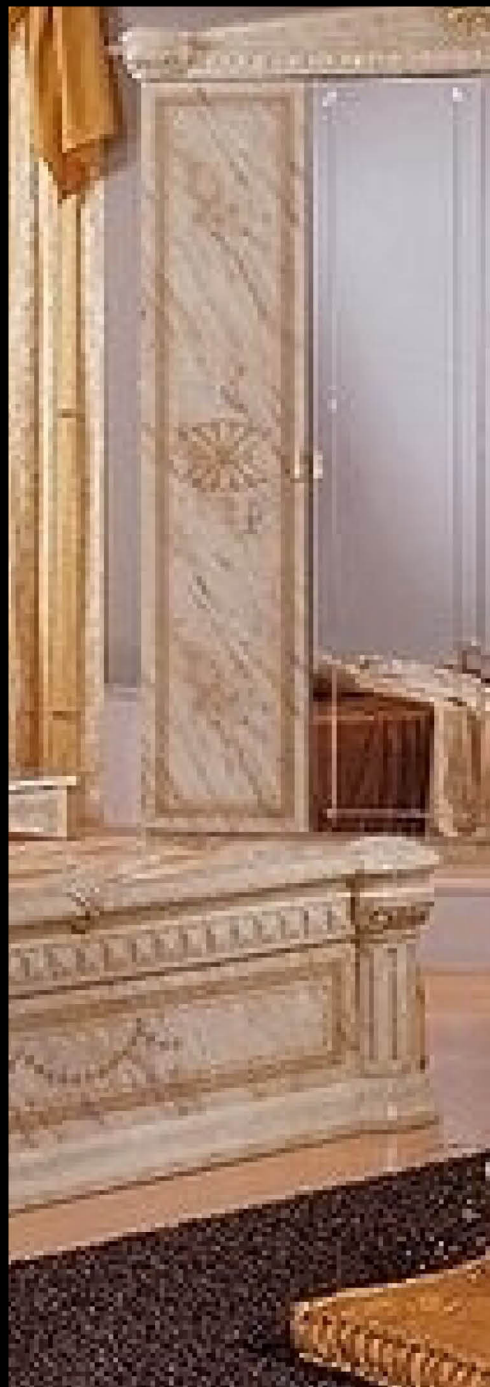
Welcome

centres

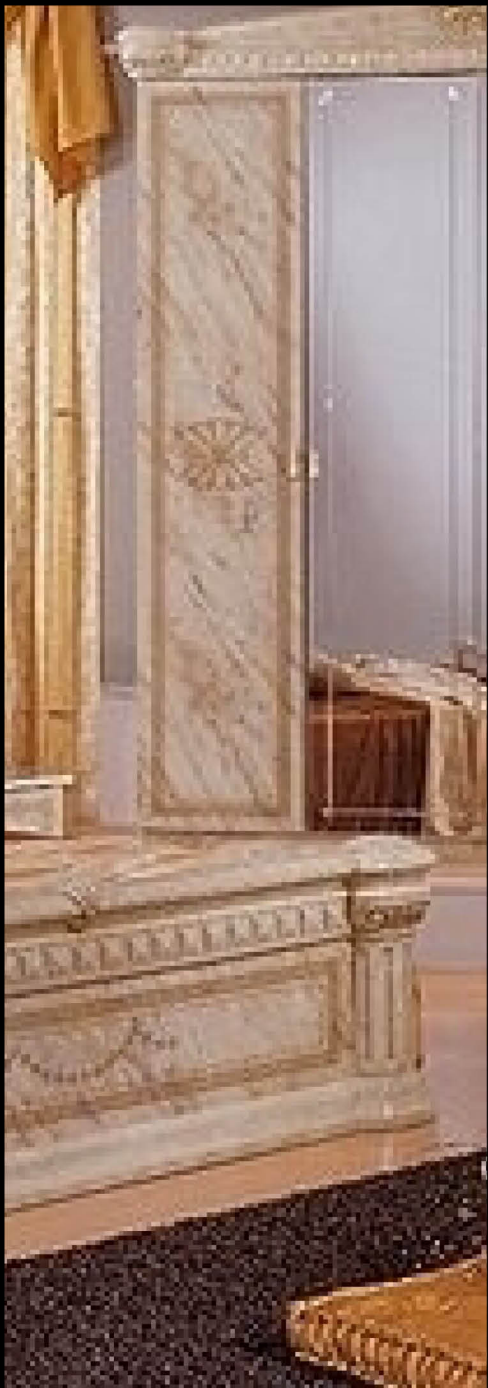


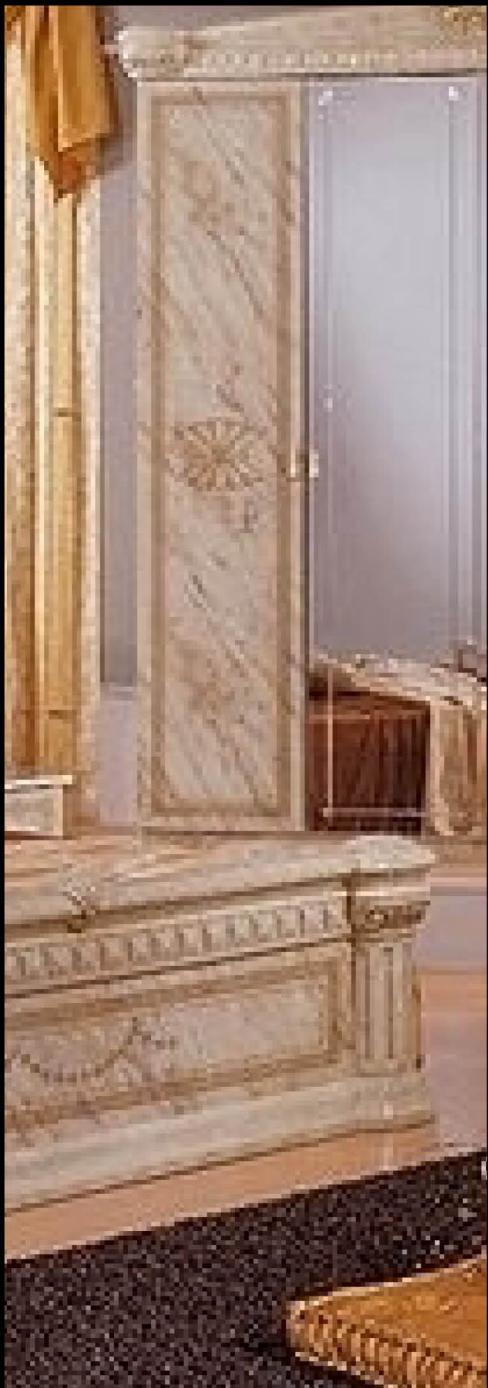
# “The Philosophy of Furniture”

Edgar Allan Poe (1840)





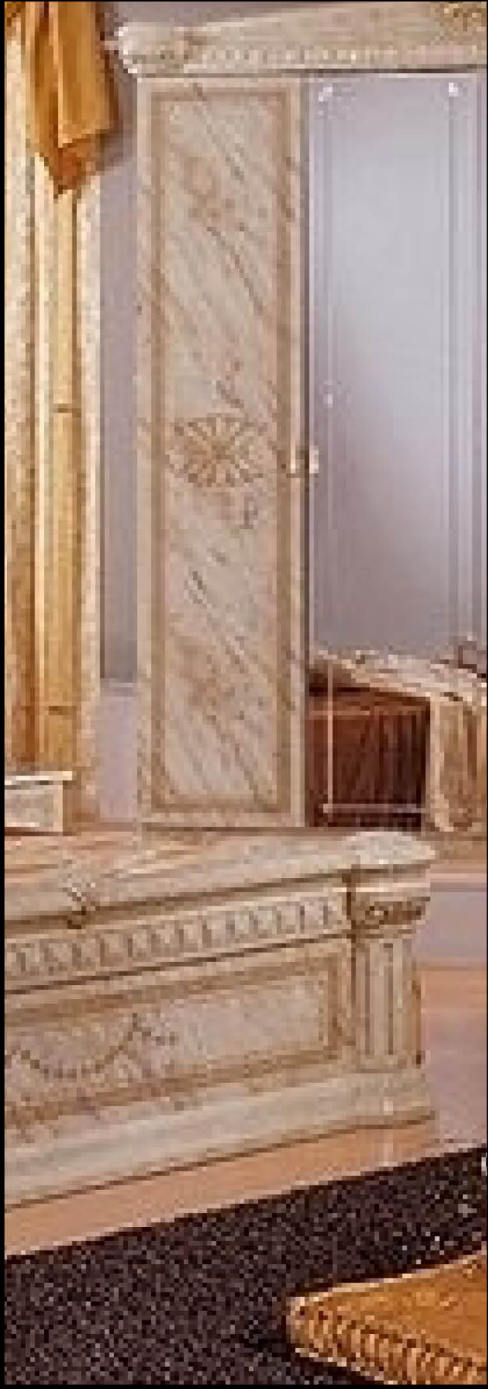




„furnishing of a home as “a cosmogonic act”  
geared to establishing an order  
capable of regulating the lives of its inhabitants“

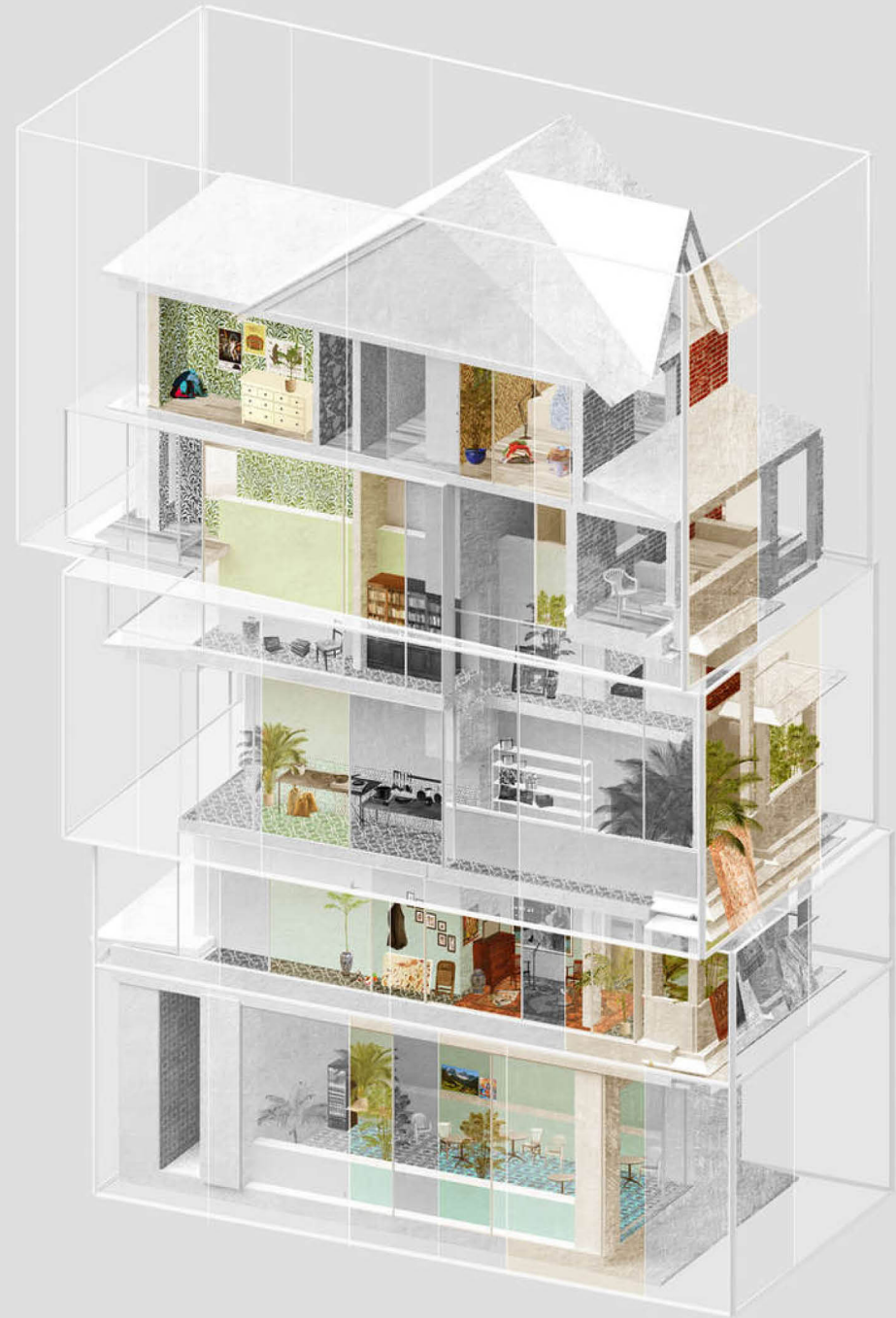
(Pasquinelli „La vertigine dell’ordine“, 2004)







**The Architecture of Upheaval** (Wakelin, 2016)



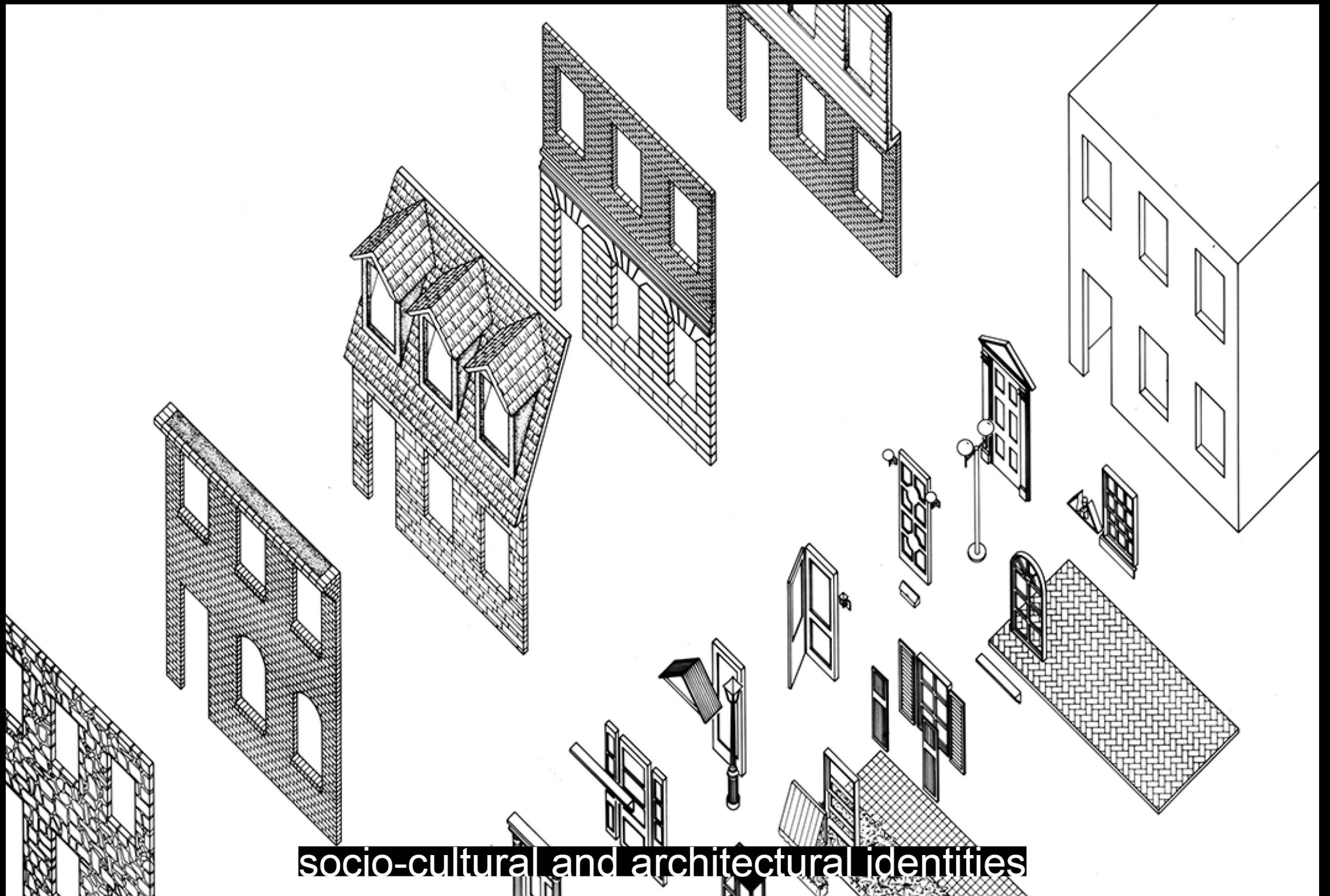




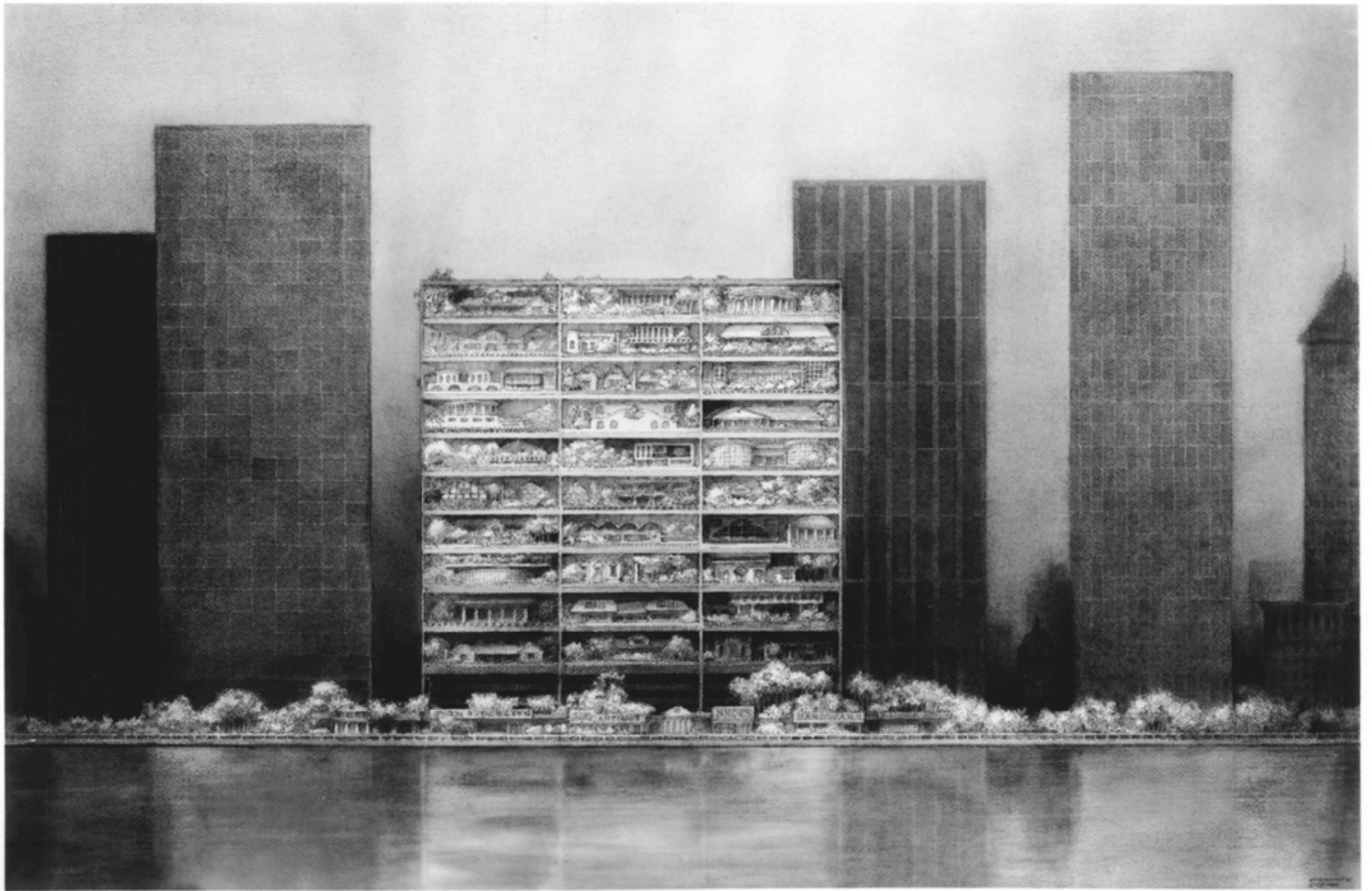
**“symbolic values and sensory qualities that  
help make a place hospitable” (Crespi, 2014)**

unfinished design solutions !?

„existenz maximum“ (Mellini, 1990)



socio-cultural and architectural identities



Highrise of Homes (Wines, 1989)

Copyrighted Material

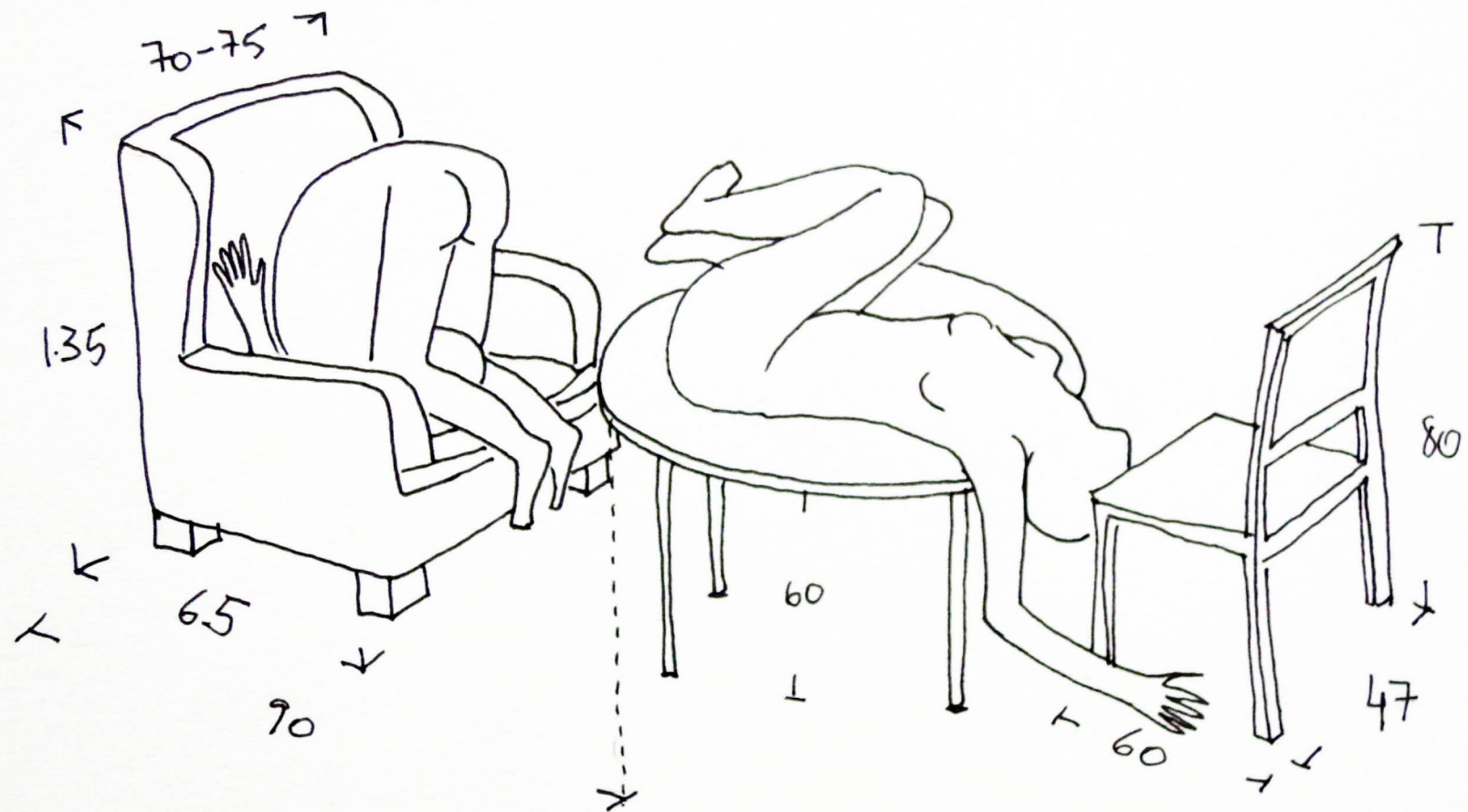
Fourth Edition



# Neufert

## Architects' Data

 WILEY-BLACKWELL  
Copyrighted Material



Disturbing Neufert (Enchantiers, 2013)

46,5 m<sup>2</sup>

10,5 m<sup>2</sup>

8,5 m<sup>2</sup>

46,5 m<sup>2</sup>



10,5 m<sup>2</sup>

8,5 m<sup>2</sup>



46,5 m<sup>2</sup>



10,5 m<sup>2</sup>



8,5 m<sup>2</sup>

8,5 m<sup>2</sup>



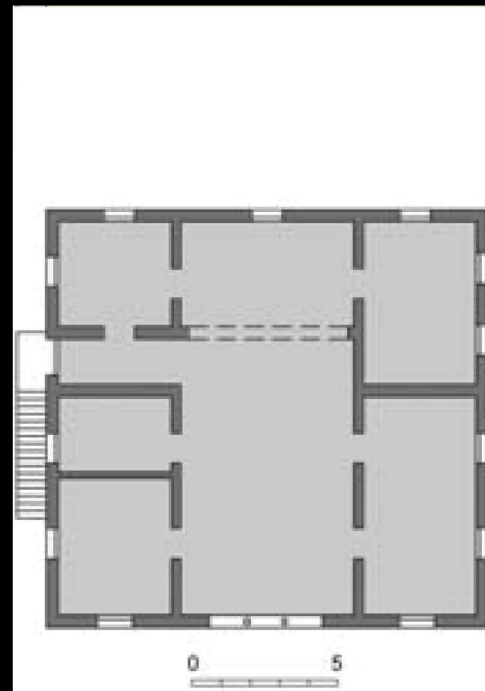
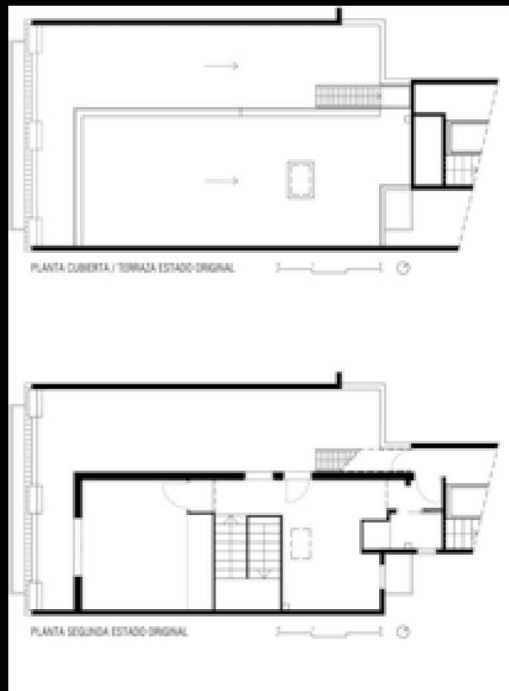
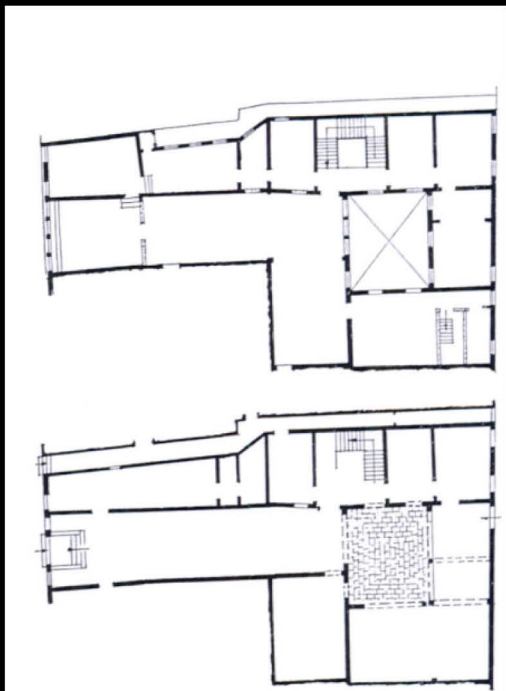
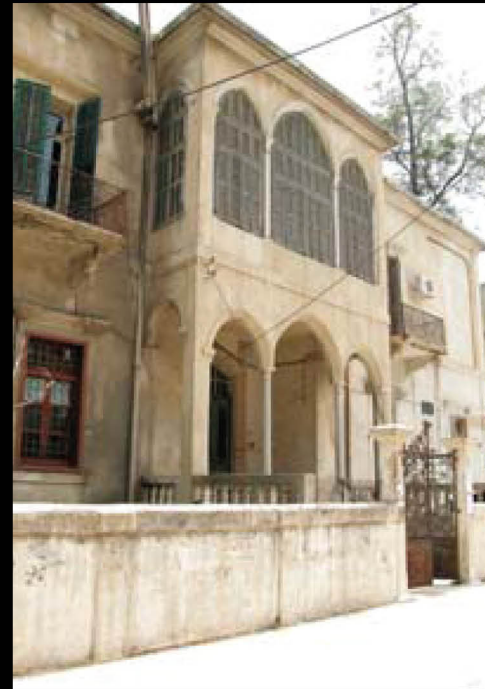
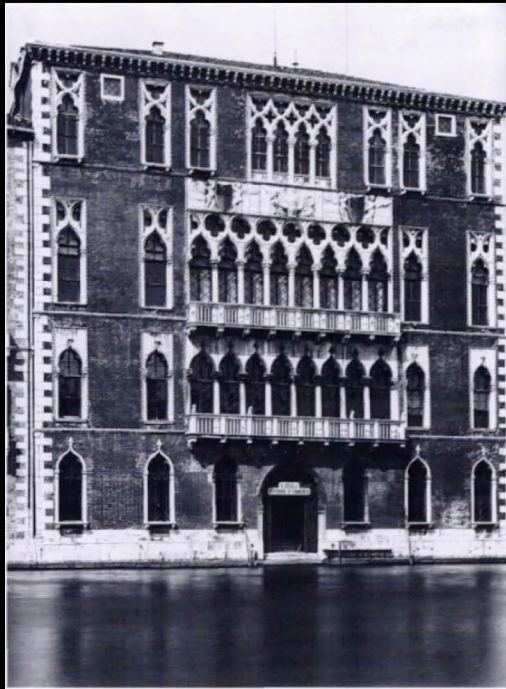
10,5 m<sup>2</sup>



46,5 m<sup>2</sup>



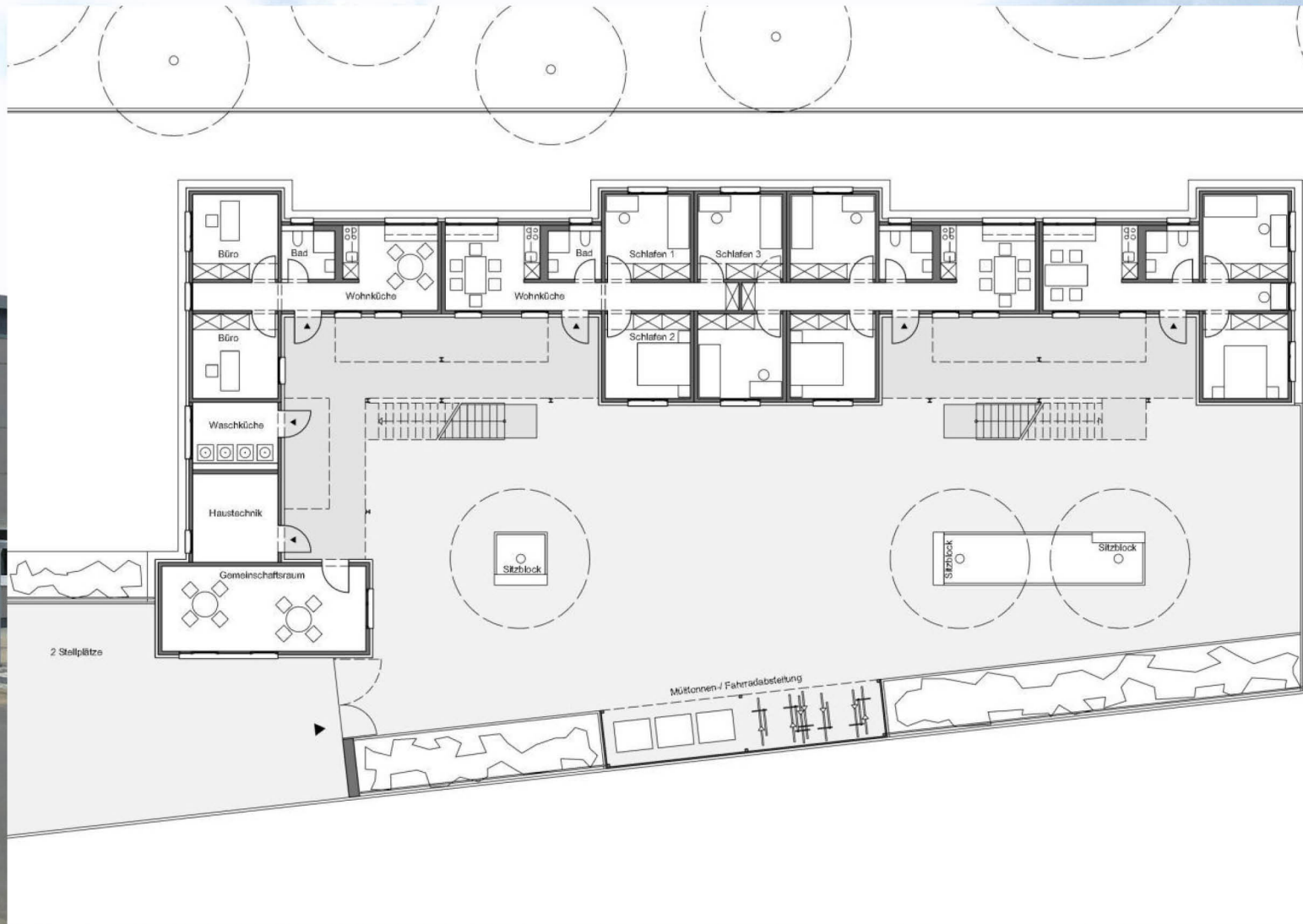




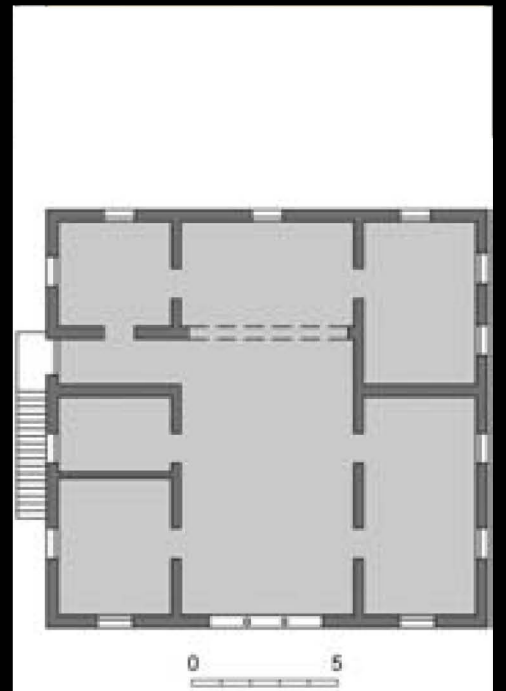
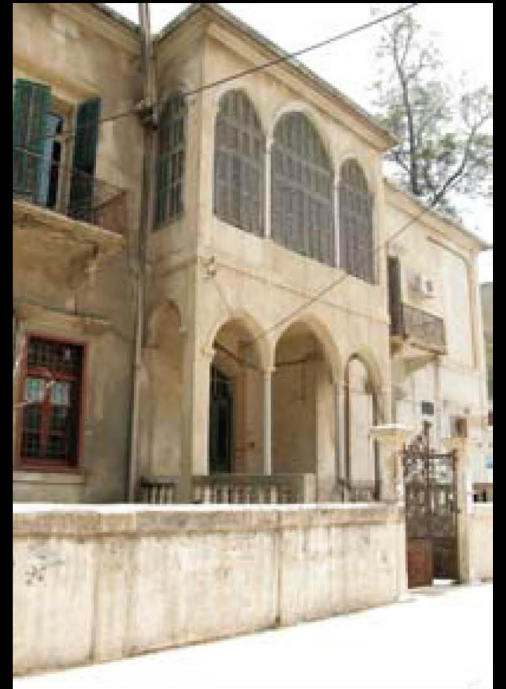
Approx. gross internal floor area 1574 SQFT / 146.2 SQM (Excludes res  
Copyright nichecom.co.uk 2013 Produced for Chancel

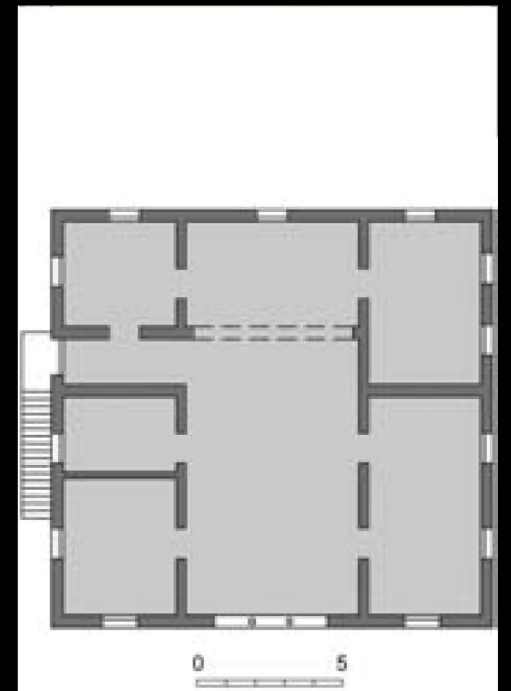
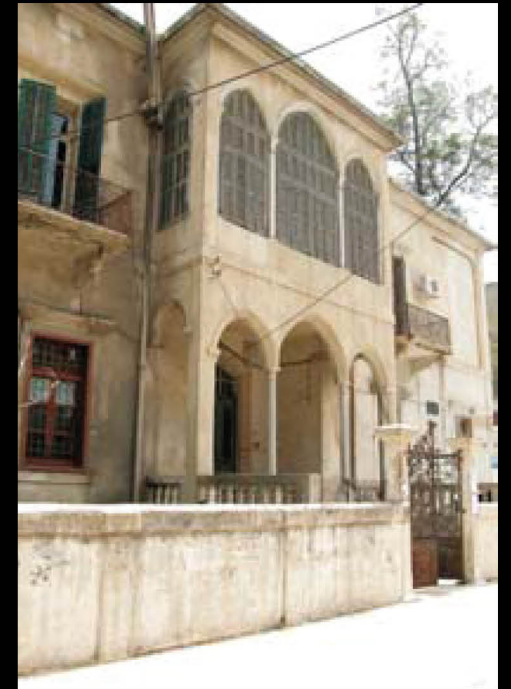


**Container Architecture** (Making Heimat, Germany)



Western idea of housing !?







**„We need to broaden the context  
and view the issue of demand  
in terms of general need  
for affordable, flexible housing“**

(Floris Alkemade, 2016)

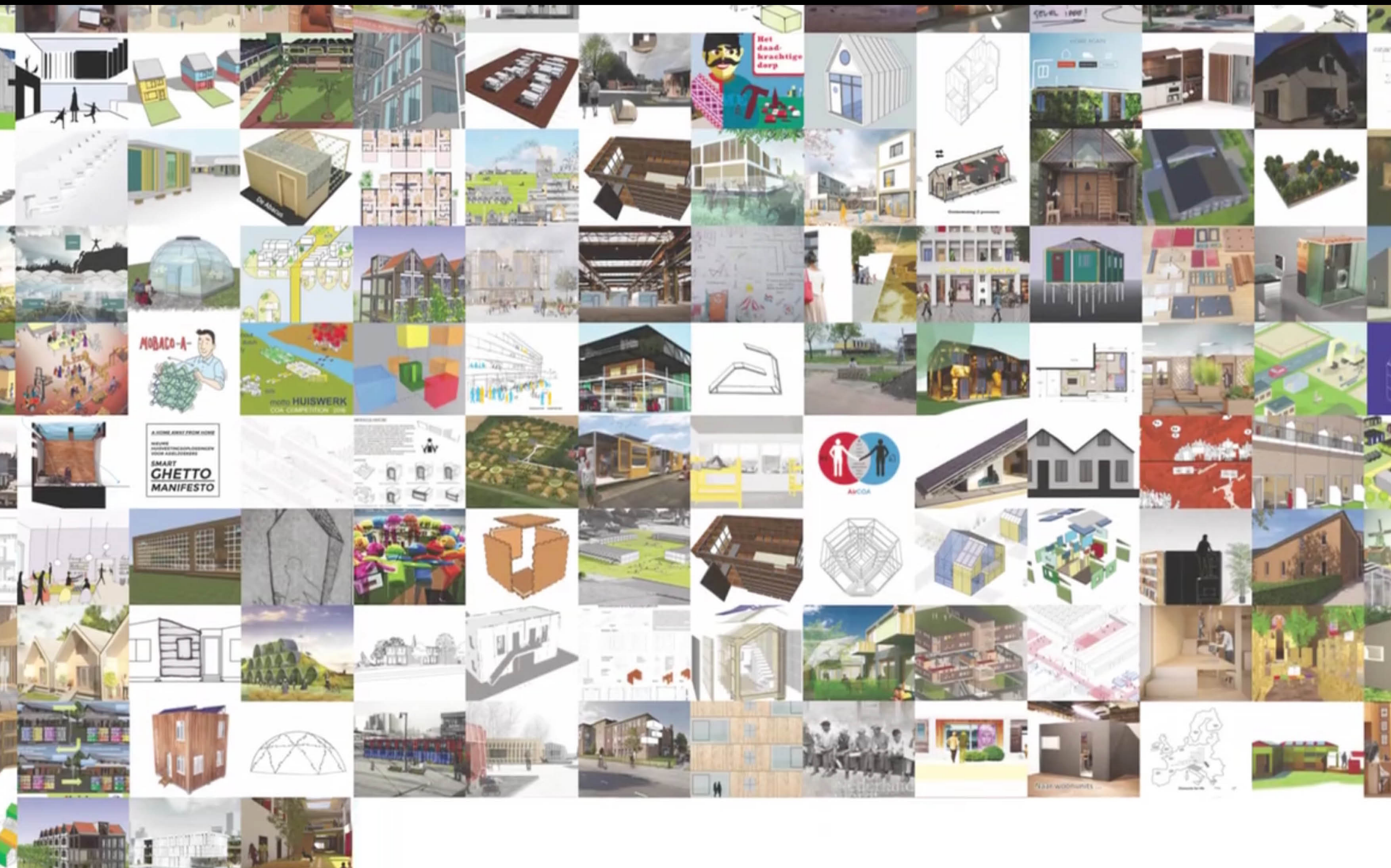


**A  
HOME  
AWAY  
FROM  
HOME**

nieuwe huisvestingsoplossingen  
voor asielzoekers

An aerial architectural rendering of a sustainable campus. The scene features a large brick building with a solar panel array on its roof, a long greenhouse structure, and a community building with a porch. The campus is surrounded by lush greenery, trees, and a winding road. The text 'FLEXIBLE SUSTAINABLE AFFORDABLE SOCIAL' is overlaid in white, with a leaf icon on 'SUSTAINABLE', a smiley face on 'SOCIAL', and a circled '1' on 'AFFORDABLE'.

FLEXIBLE  
SUSTAINABLE  
AFFORDABLE ①  
SOCIAL



The image shows the interior of a modern, compact wooden house. The walls, ceiling, and floor are made of light-colored wood. On the left, there is a dining table with two wooden chairs. In the center, a kitchen area features white cabinets and a countertop with a sink and a small potted plant. A large window or glass door in the background offers a view of a city street with other buildings. On the right, there are wooden bunk beds with white bedding. A person's hand is visible at the top right, touching the wood. A white text box is overlaid at the bottom left of the image.

# EVOLUTIONARY WOODEN HOUSES

**TEAM FINCH BUILDING B.V.**

**95% CIRCULAR, MADE OF DURABLE, SOLID WOOD**

**FLEXIBLE AND PORTABLE**

**CONNECTABLE BOTH VERTICALLY AND HORIZONTALLY - UP TO FIVE STORES HIGH.**

The image shows the interior of a solar cabin. The walls are made of light-colored plywood. On the left, there is a window with a white frame. In the center, a wooden staircase leads to an upper level. A young man in a green and grey jacket is standing at the bottom of the stairs, looking up. A young woman in a black coat is walking up the stairs. In the foreground, there are two beds with patterned bedding. A white rectangular object, possibly a solar panel or a piece of furniture, is visible in the lower left. The floor is white, and there is a colorful rug on the floor near the stairs.

## SOLAR CABIN

TEAM ARJAN DE NOOIJER & BRAM ZONDAG

COMBINES A SOLAR PANEL FIELD WITH A MODULAR HOME  
COST-EFFECTIVE FORM OF TEMPORARY HOUSING  
INVESTMENT IN RENEWABLE ENERGY



# RE-SETTLE

TEAM RENÉ VAN ZUUK ARCHITEKTEN BV

MANUFACTURED FROM A RECTANGULAR BLOCK OF EPS  
CUT OUT RINGS CAN BE STACKED TOGETHER  
SUPPLIED AS ONE D.I.Y. PACKAGE



**Innovation & Integration !?**



Change of  
architectural and urban identities



„pride in almost every home you see despite the despair“

(ABC News)



Adaption and custmisation of „refugee architecture“

{THE EUROPEAN DREAM}

Welcome

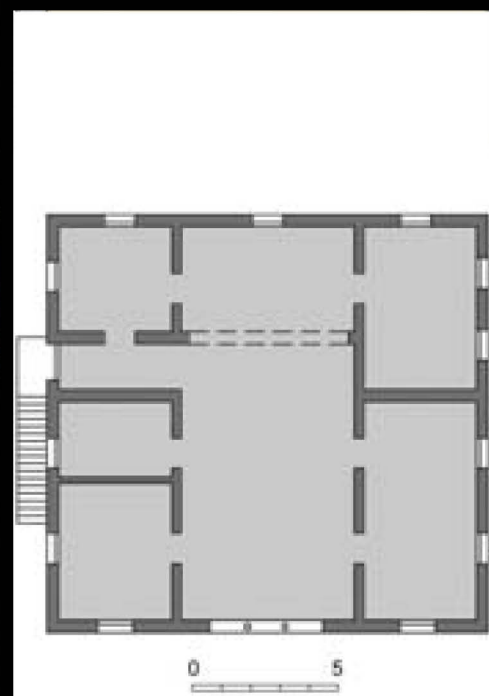
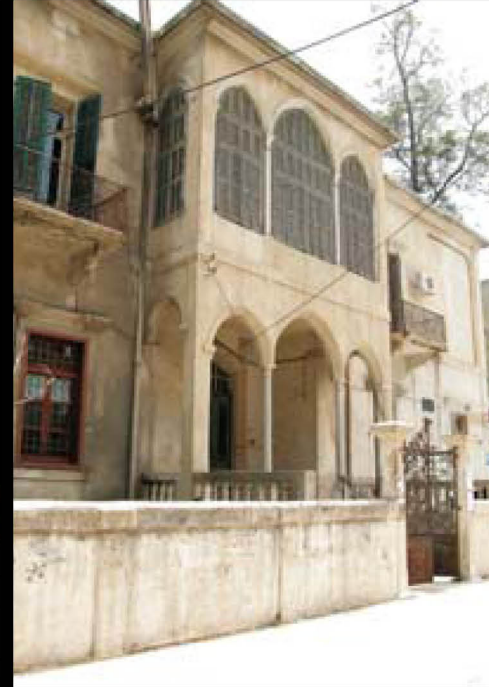
centres



{THE EUROPEAN DREAM}



THE FUTURE OF ARCHITECTURE !?



**"ARCHITECTURE  
HAS AN IMPORTANT  
ROLE TO PLAY  
IN THIS CRISIS."**

**FLORIS ALKEMADE**

**“THE FUTURE OF  
ARCHITECTURE  
HAS AN IMPORTANT  
ROLE TO PLAY  
IN THIS CRISIS.”**