

Project MinE

Data browser

Rick van der Spek

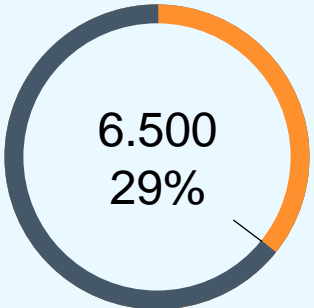
Project MinE ALS sequencing consortium

<http://databrowser.projectmine.com>













Share Data and Results with any research initiative



Share Data and Results with any research initiative

Facilitate individual level data requests



Share Data and Results with any research initiative

Facilitate individual level data requests

Integrate with public data

Component	Data	Type	N
Coverage	All available	WGS	6.495
Burden	Case – Control (NL only)	WGS	1.776
Variant Table	Controls only	WGS	1.968
Data Request	All available (Non – dbGaP etc.)	Array	36K

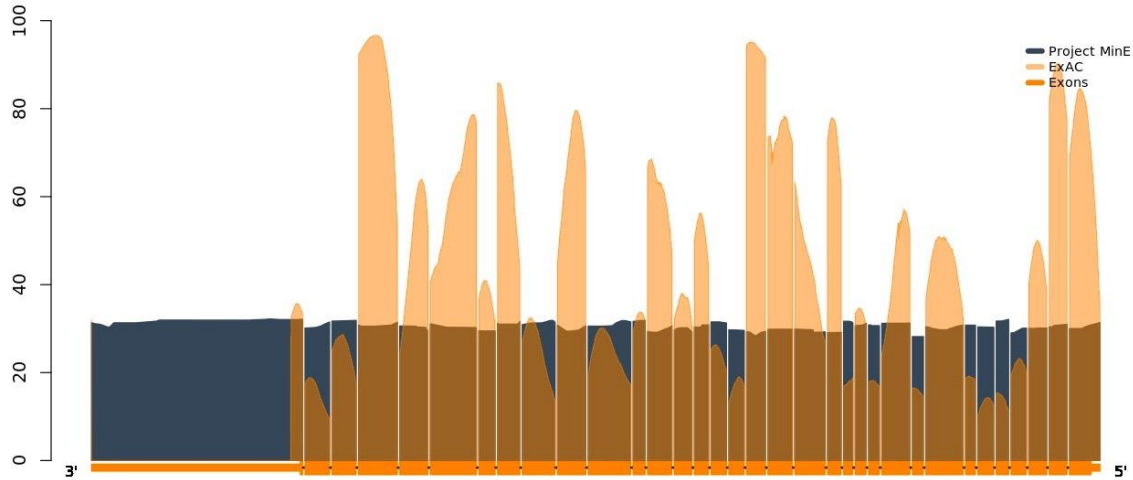
Sara Pulit



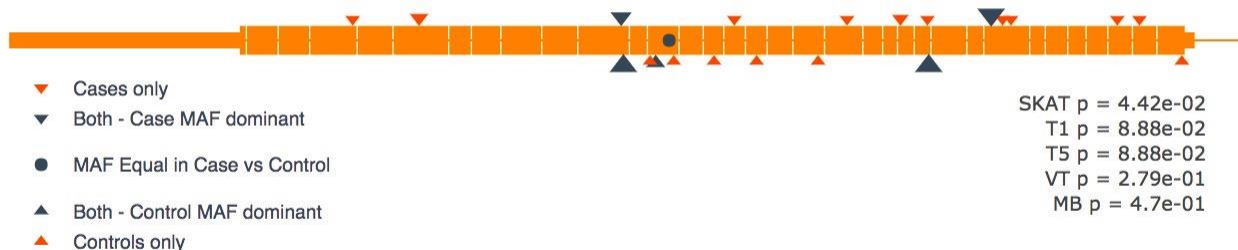
Bas Middelkoop



Component	Data	Type	N
Coverage	All available	WGS	6.495



Component	Data	Type	N
Coverage	All available	WGS	6.495
Burden Testing	Case – Control (NL only)	WGS	1.776



Component	Data	Type	N
Coverage	All available	WGS	6.495
Burden	Case – Control (NL only)	WGS	1.776
Variant Table	Controls only	WGS	1.968

CHR	BP	REF	ALT	QC	MAF_All	Strand	Consequence	Impact	
+	4	170321462	A	G	Pass	0.000259875	-1	missense_variant	MODERATE
+	4	170327891	C	T	Pass	0.000259875	-1	missense_variant	MODERATE
+	4	170345733	T	C	Pass	0.000259875	-1	missense_variant	MODERATE
+	4	170345790	G	A	Pass	0.000259875	-1	missense_variant	MODERATE
+	4	170347315	G	A	Pass	0.000259875	-1	missense_variant	MODERATE
+	4	170384460	T	C	Pass	0.000259875	-1	missense_variant	MODERATE
+	4	170398403	T	C	Pass	0.00026001	-1	missense_variant	MODERATE
+	4	170398627	G	A	Pass	0.000260281	-1	missense_variant	MODERATE
+	4	170400583	C	T	Pass	0.000779626	-1	missense_variant	MODERATE

Component	Data	Type	N
Coverage	All available	WGS	6.495
Burden	Case – Control (NL only)	WGS	1.776
Variant Table	Controls only	WGS	1.968
Data Request	All available (Non – dbGaP)	Array	36K

A. Contact Details

Indicate your contact details below.

<input type="text" value="Name"/>	<input type="text" value="Email"/>	<input type="text" value="Institute"/>
-----------------------------------	------------------------------------	--

B. Specify dataset requested

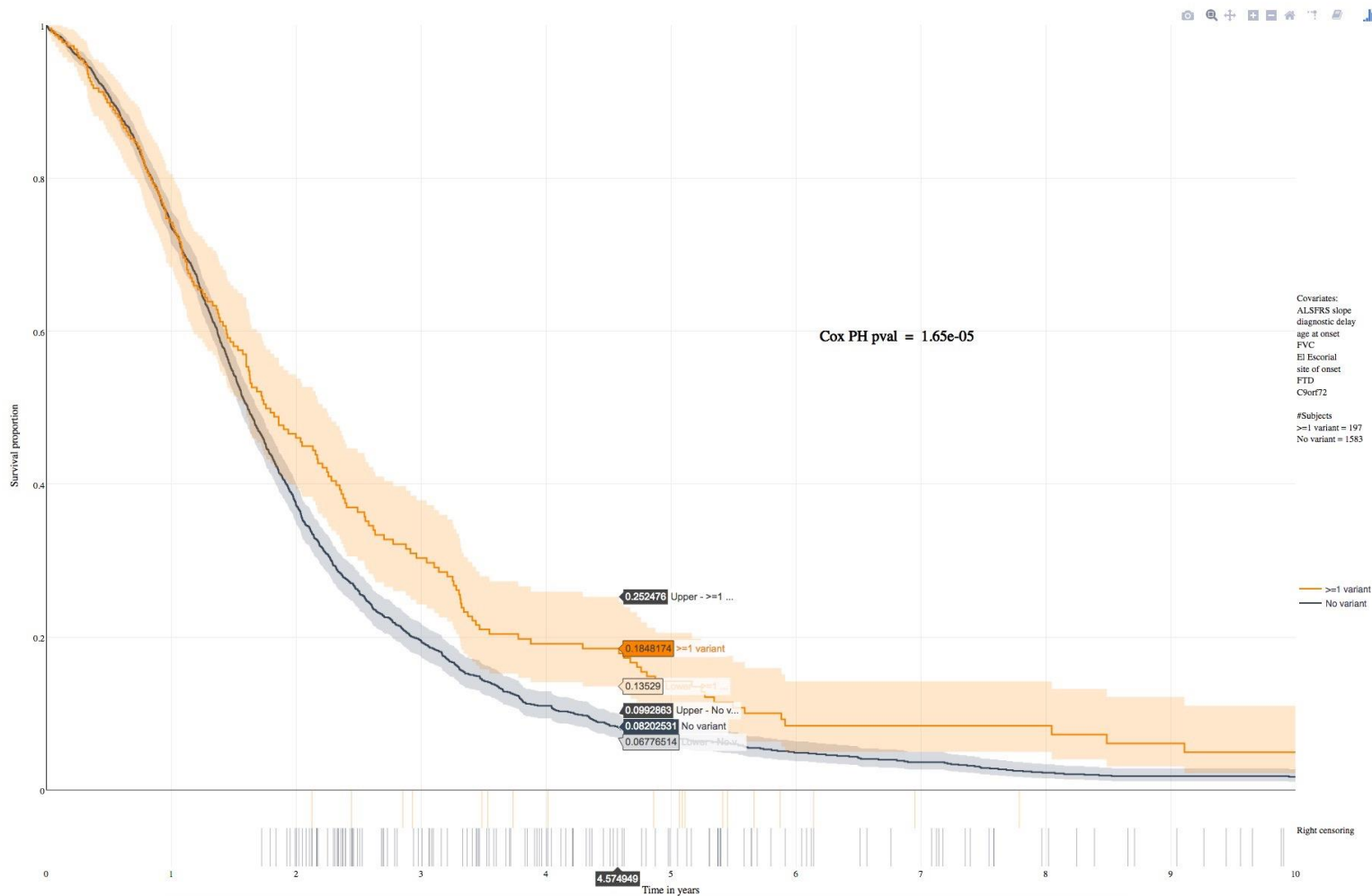
	Request	Cohort	Total	Cases	Controls	Males	Females	Country	Platform	Reference
1	<input checked="" type="checkbox"/>	BE1	682	311	371	351	331	Belgium	370k	v. Es, Nat Genet, 2008
2	<input checked="" type="checkbox"/>	BE2	475	225	250	272	203	Belgium	OmniExpress	
3	<input checked="" type="checkbox"/>	CZ1	464	228	236	269	195	Switzerland	OmniExpress	
4	<input checked="" type="checkbox"/>	FIN4	144	144	0	73	71	Finland	OmniExpress	



This site includes the Project MinE Variant Browser based on >6400 whole genomes from different European ancestry, and GWAS summary statistics as reported in Nature Genetics. To download the summary statistics please see the 'Publications' tab, or click [here](#). We have a [data-sharing policy](#) to provide a simple and transparent framework for the broad use of Project MinE data. If you would like to request individual level array data please see the 'Request Data' tab. The website also includes burden test results for > 15.000 genes.

If you are interested in future release announcements, please sign up for our mailing list [here](#)

Survival



Future work

- Live release end 2017
- 6.500 genomes in all components
- Include survival analysis per gene
- Integrate additional databases
- Open-source



www.projectmine.com





JOIN OUR TEAM

Post-doc with WGS experience