

# Geologija gorskega sveta







































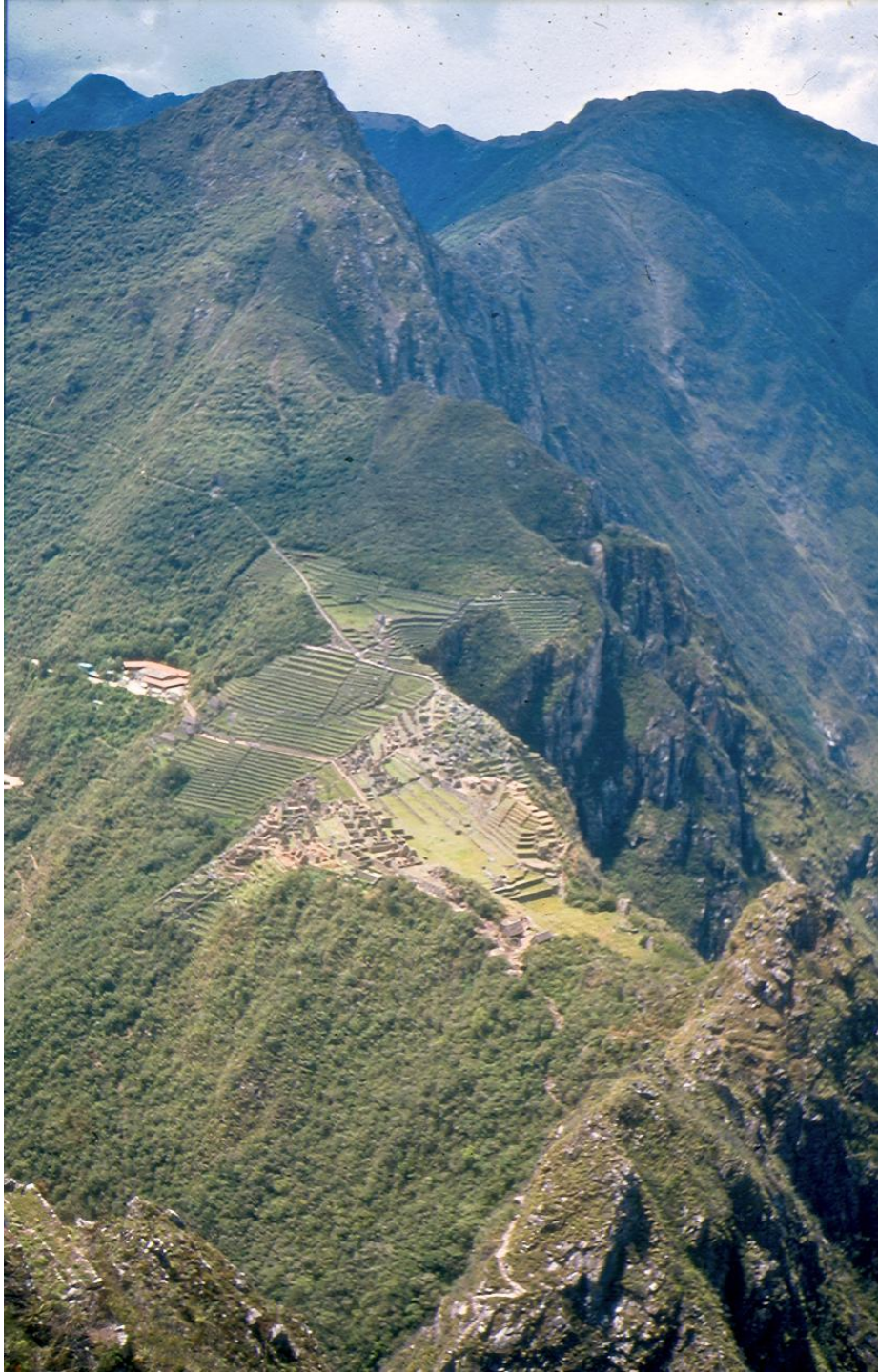














# Dojemanje geološkega časa



Table 1. The development of life through time.

Million years before present	Era, System, or Event	Relative to a calendar year (date time)
<b>Precambrian</b>		
4600	Earth formed from planetary nebula	1/1 0:00
3900	Inferred origin of life (first cells)	2/25 13:02
3800	Oldest age-dated rocks on Earth	3/5 11:28
3600	Fossil algae and stromatolites (prokaryotes)	3/21 8:20
3250	Fossil evidence of bacteria	4/18 2:52
2100	Fossil evidence of cells with a nucleus (eukaryotes)	7/18 8:52
1500	First multi-celled organisms (seaweed and algae)	9/3 23:28
670	Oldest marine worms and jellyfish	11/8 20:05
600	Vendian period begins: Ediacarian fossils	11/14 9:33
<b>Paleozoic</b>		
544	Cambrian system begins	11/18 20:02
515	Burgess Shale animals, animals with a notochord	11/21 3:15
505	Ordovician system begins	11/21 22:18
505	First fish	11/21 22:18
470	First fossil evidence of land plants	11/24 16:57
438	Silurian system begins	11/27 5:53
430	First vascular land plants	11/27 21:07
414	Oldest lung fish fossils	11/29 3:36
408	Devonian system begins	11/29 15:01
408	Oldest fossil evidence of mosses	11/29 15:01
385	First insects (beetles), scorpions, and centipedes	12/1 20:20
380	First lobe-finned fish	12/1 20:20
375	First land animals (amphibians)	12/2 5:52
370	First sharks	12/2 15:23
365	First seed plants (ferns)	12/3 0:54
360	Mississippian system begins	12/3 10:26
330	First possible reptiles	12/5 19:33
320	Pennsylvanian system (Kentucky coal)	12/6 14:36
286	Permian system begins	12/9 7:21
260	Sail-backed reptiles (Dimetrodon)	12/11 8:52
245	End of Paleozoic, 96% of all life on Earth perishes	12/12 13:26
<b>Mesozoic, the "Age of Reptiles"</b>		
245	Triassic system begins	12/12 13:26
240	First crocodiles	12/12 22:57
228	First dinosaurs (Eoraptor and Saltoposuchus)	12/13 21:48
221	First mammals (shrew-like)	12/14 11:08
210	First turtles	12/15 8:05
208	Jurassic system begins	12/15 11:53
195	Dilophosaurus, an early Jurassic dinosaur	12/16 12:39
155	First bird, Archeopteryx	12/19 16:49
152	Apatosaurus and Brachiosaurus (long-necked)	12/19 22:32
150	Allosaurus, (meat-eating dinosaur)	12/20 2:20
148	Stegosaurus, (plate-backed dinosaur)	12/20 6:09
144	Cretaceous system begins	12/20 13:46
115	First flowering plants	12/22 21:00
82	Duck-billed dinosaurs (Maiasaurus)	12/25 11:50
80	Protoceratops (first dinosaur eggs discovered)	12/25 15:39
75	Triceratops	12/26 1:10
70	Tyrannosaurus rex and Velociraptor	12/26 10:41
65	End of Mesozoic, probably meteor or comet impact	12/26 20:13
<b>Cenozoic, the "Age of Mammals"</b>		
65	Tertiary system begins	12/26 20:13
64	First ancestors of dogs and cats	12/26 22:07
60	Grasses become widespread	12/27 5:44
57	First ancestors of pigs and deer	12/27 11:27
55	First horses (Eohippus)	12/27 15:15
45	First ancestors of rabbits	12/28 10:18
39	First monkeys	12/28 21:43
4	Oldest human like ancestors (hominids)	12/31 17:20
2	Quaternary system begins	12/31 20:57
1	First of four ice ages	12/31 22:05
1	Oldest direct human-ancestor fossil, Homo habilis	12/31 22:02
0.1	First modern man, Homo sapiens	12/31 23:48
0.05	Mammoth and mastodon bones, Big Bone Lick, KY	12/31 23:54
235 years	Revolutionary War	12/31 23:59
70 years	World War II	1/1 0:00

Prvo življenje

November

Prva riba

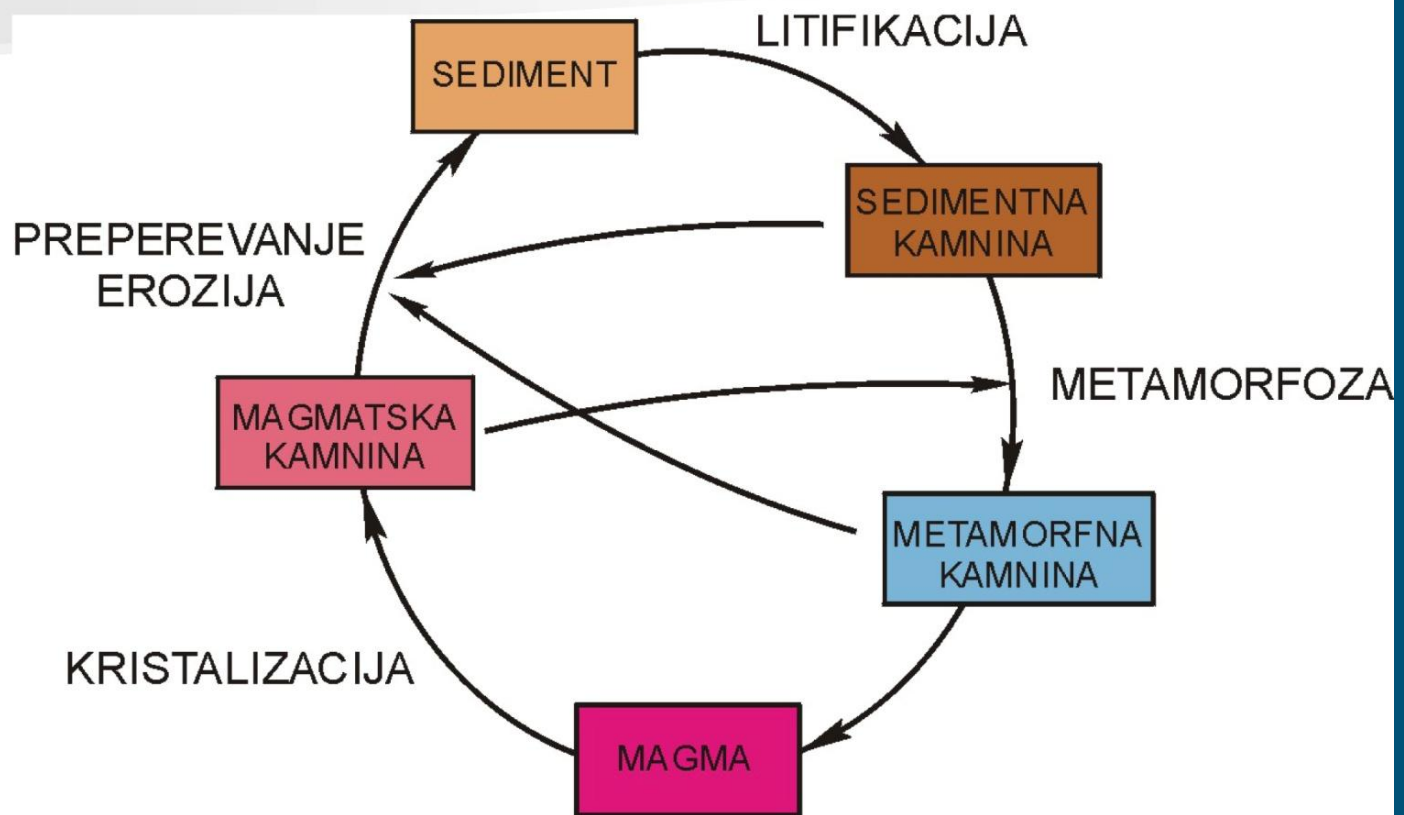
December

Prvi dinozavri

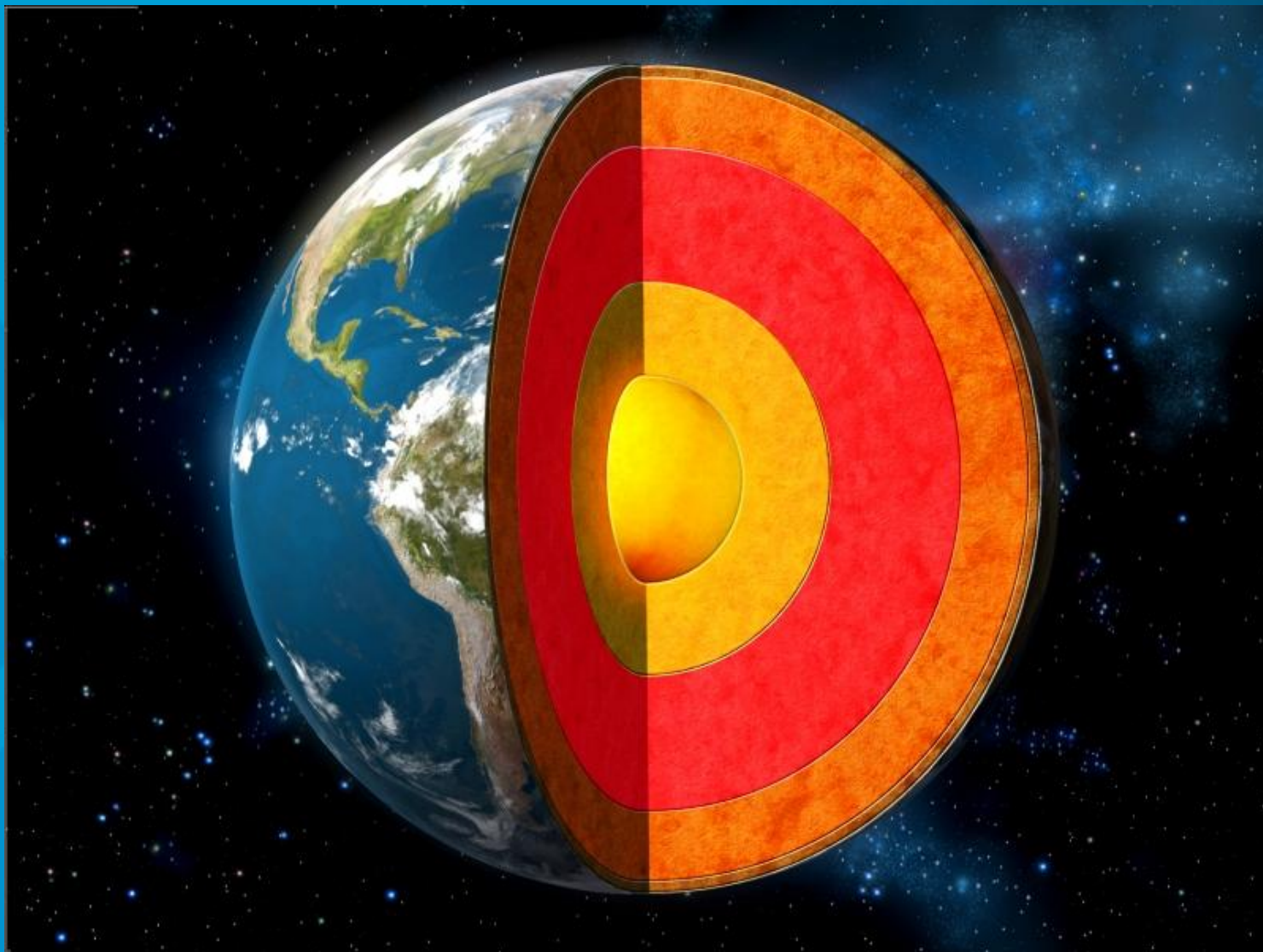
Prva ptica



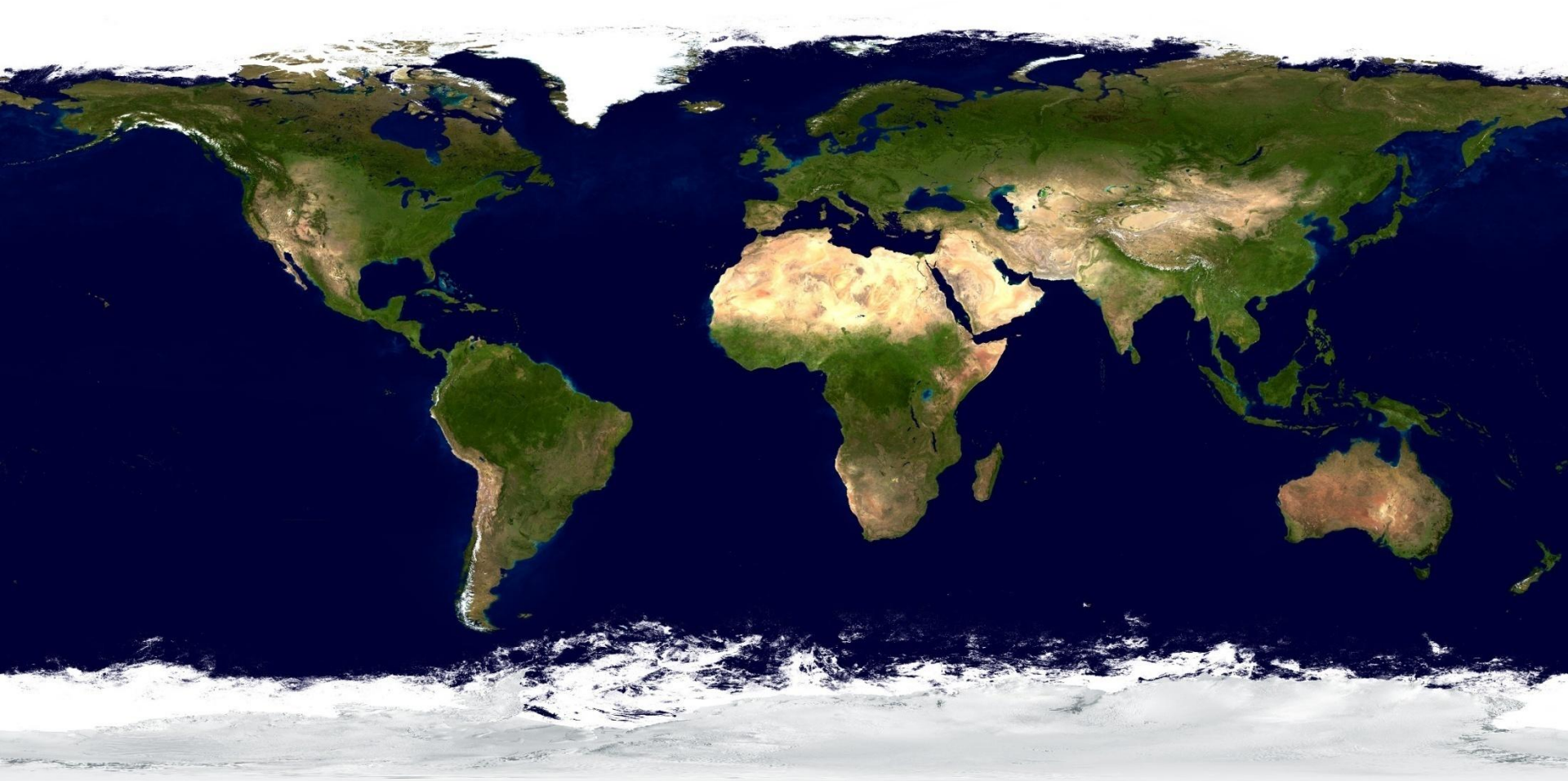
## Kamninski krog



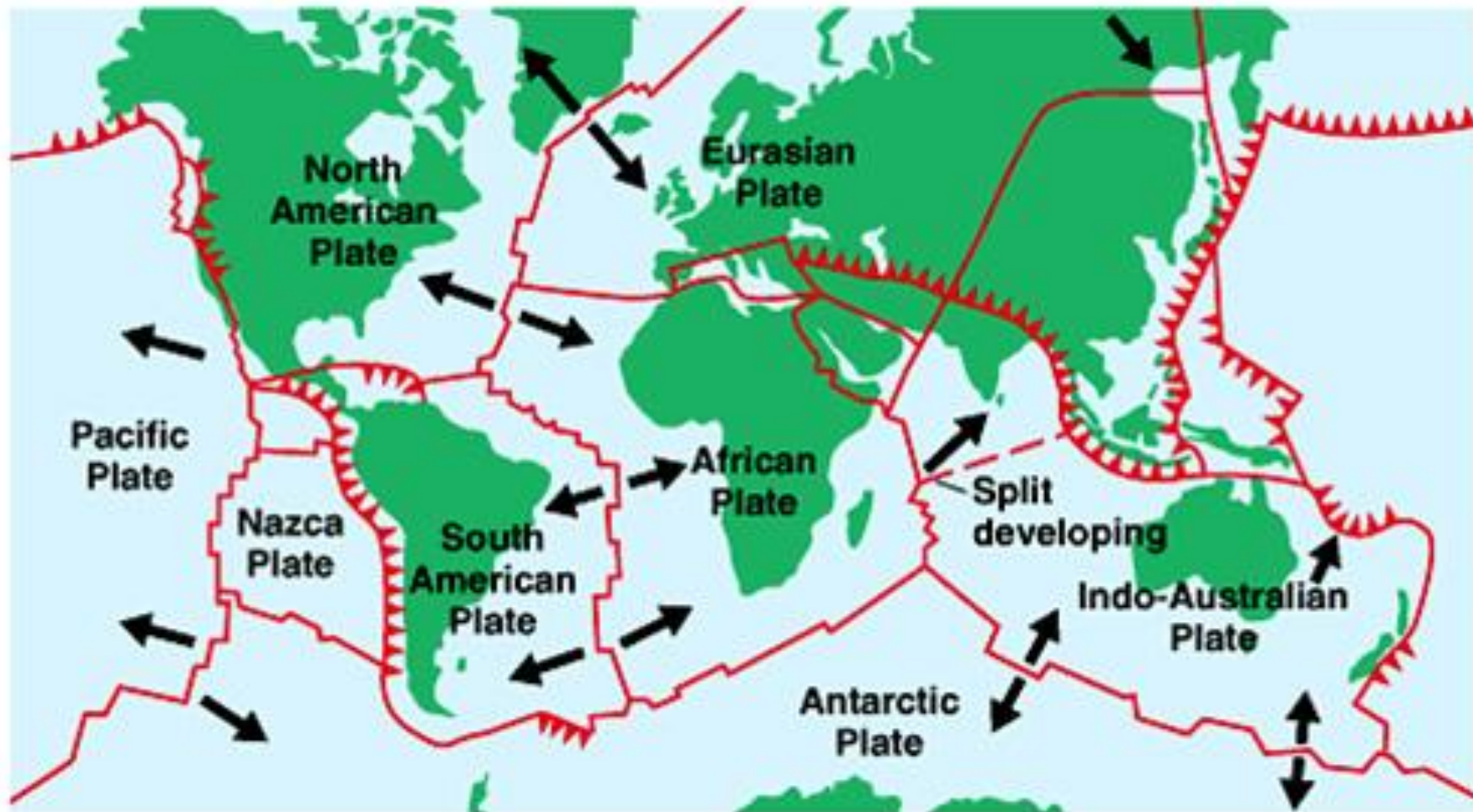




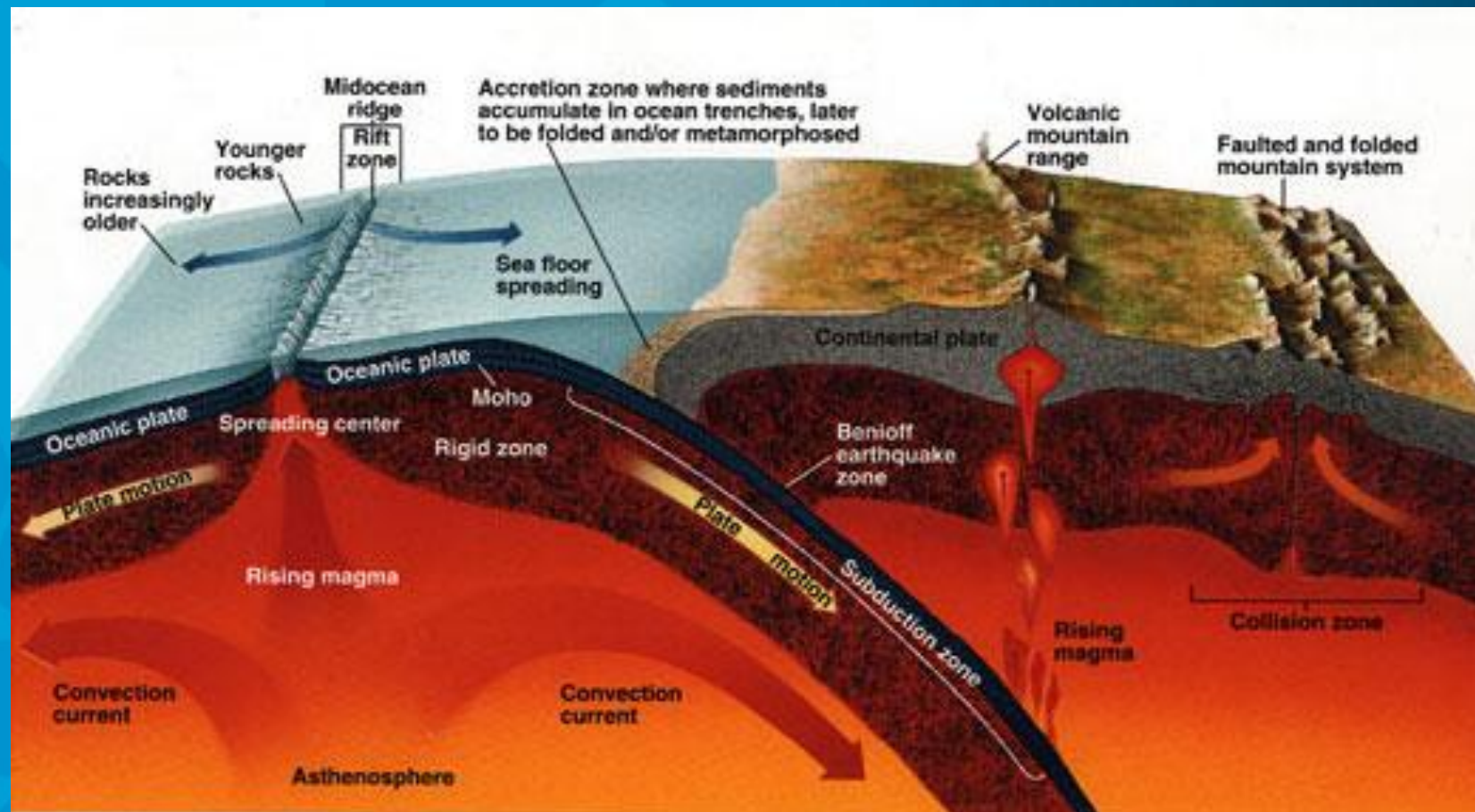






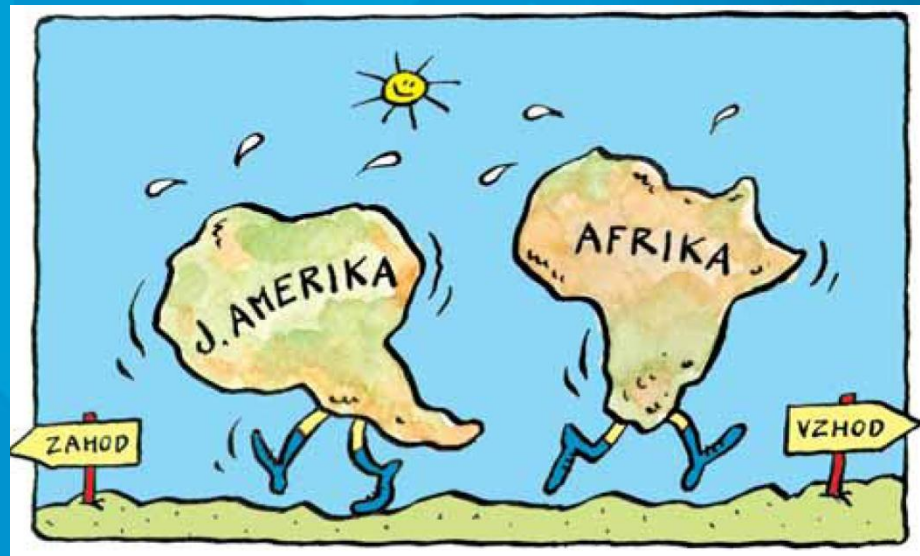








# TEORIJA O TEKTONIKI PLOŠČ





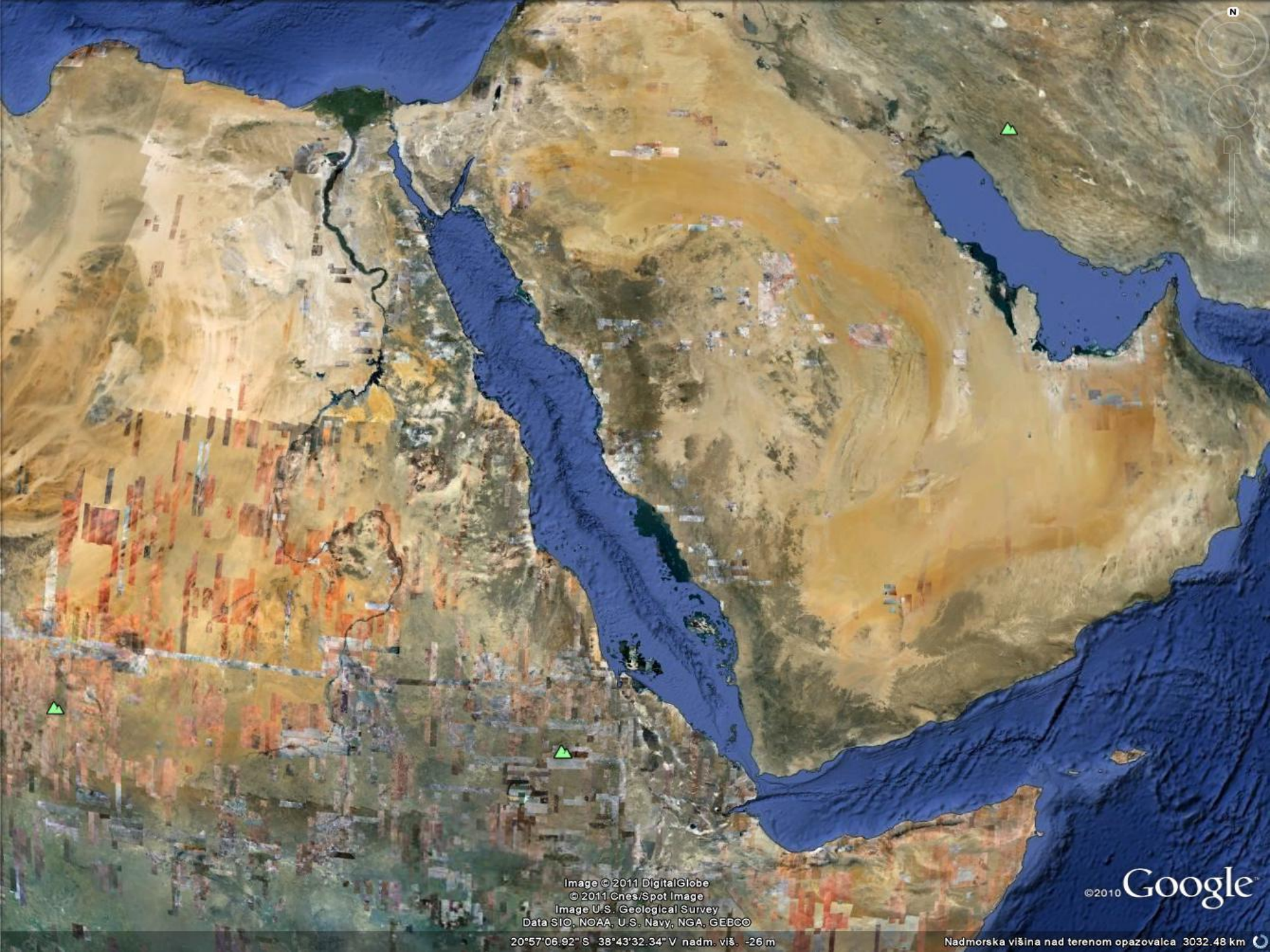


Image © 2011 DigitalGlobe  
© 2011 Cnes/Spot Image  
Image U.S. Geological Survey  
Data SIO, NOAA, U.S. Navy, NGA, GEBCO

© 2010 Google™

20°57'06.92" S 38°43'32.34" V nadm. viš. -26m

Nadmorska višina nad terenom opazovalca 3032.48 km





© 2011 Cnes/Spot Image  
Image IBCAO  
Image © 2011 TerraMetrics  
Data SIO, NOAA, U.S. Navy, NGA, GEBCO  
8°17'41.65" S 38°54'33.84" Z nadm. viš. -3237 m

© 2010 Google™

Nadmorska višina nad terenom opazovalca 8432.68 km





© 2011 Cnes/Spot Image  
Image © 2011 GeoEye  
Image © 2011 TerraMetrics  
Data SIO, NOAA, U.S. Navy, NGA, GEBCO

© 2010 Google™

2°35'34.46" S 61°41'45.94" V nadm. viš. -4056 m

Nadmorska višina nad terenom opazovalca 7548.14 km





Image © 2011 GeoEye  
© 2011 Cnes/Spot Image  
Image IBCAO  
Data SIO, NOAA, U.S. Navy, NGA, GEBCO

26°45'56.01" J 64°01'53.75" V nadm. viš. -4490 m

© 2010 Google™

Nadmorska višina nad terenom opazovalca 8498.18 km





© 2011 Cnes/Spot Image  
Image IBCAO  
Image © 2011 TerraMetrics  
Data SIO, NOAA, U.S. Navy, NGA, GEBCO

9°43'05.93" S 138°09'53.42" V nadm. viš. -6017 m

© 2010 Google™

Nadmorska višina nad terenom opazovalca 10063.70 km





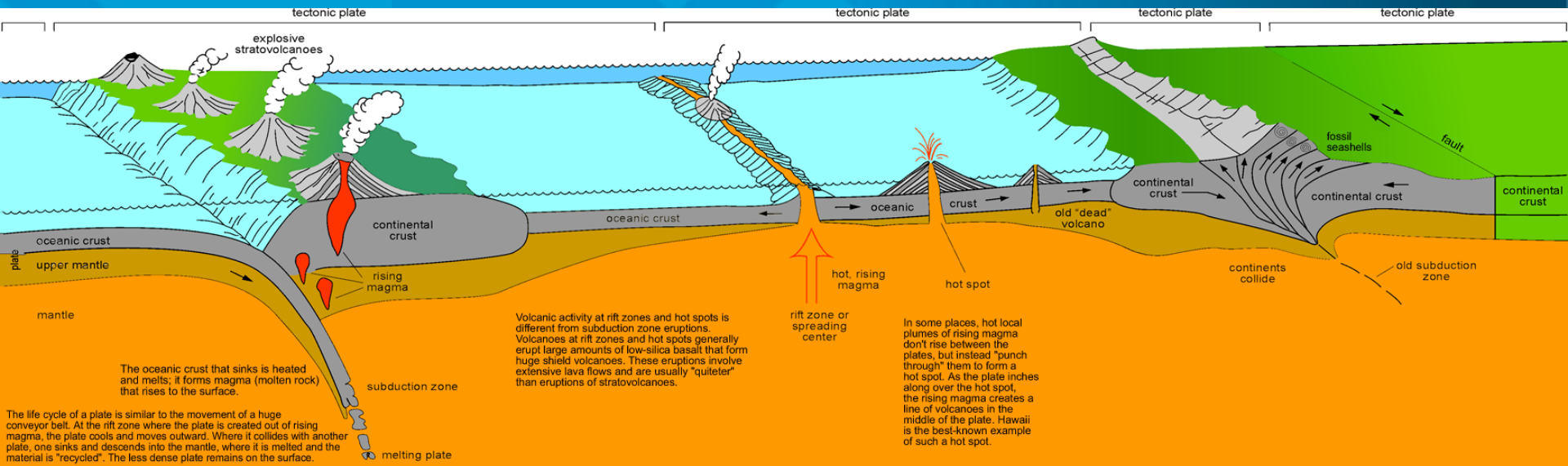
© 2011 Cnes/Spot Image  
Image © 2011 DigitalGlobe  
Image © 2011 TerraMetrics  
Data SIO, NOAA, U.S. Navy, NGA, GEBCO

© 2010 Google™

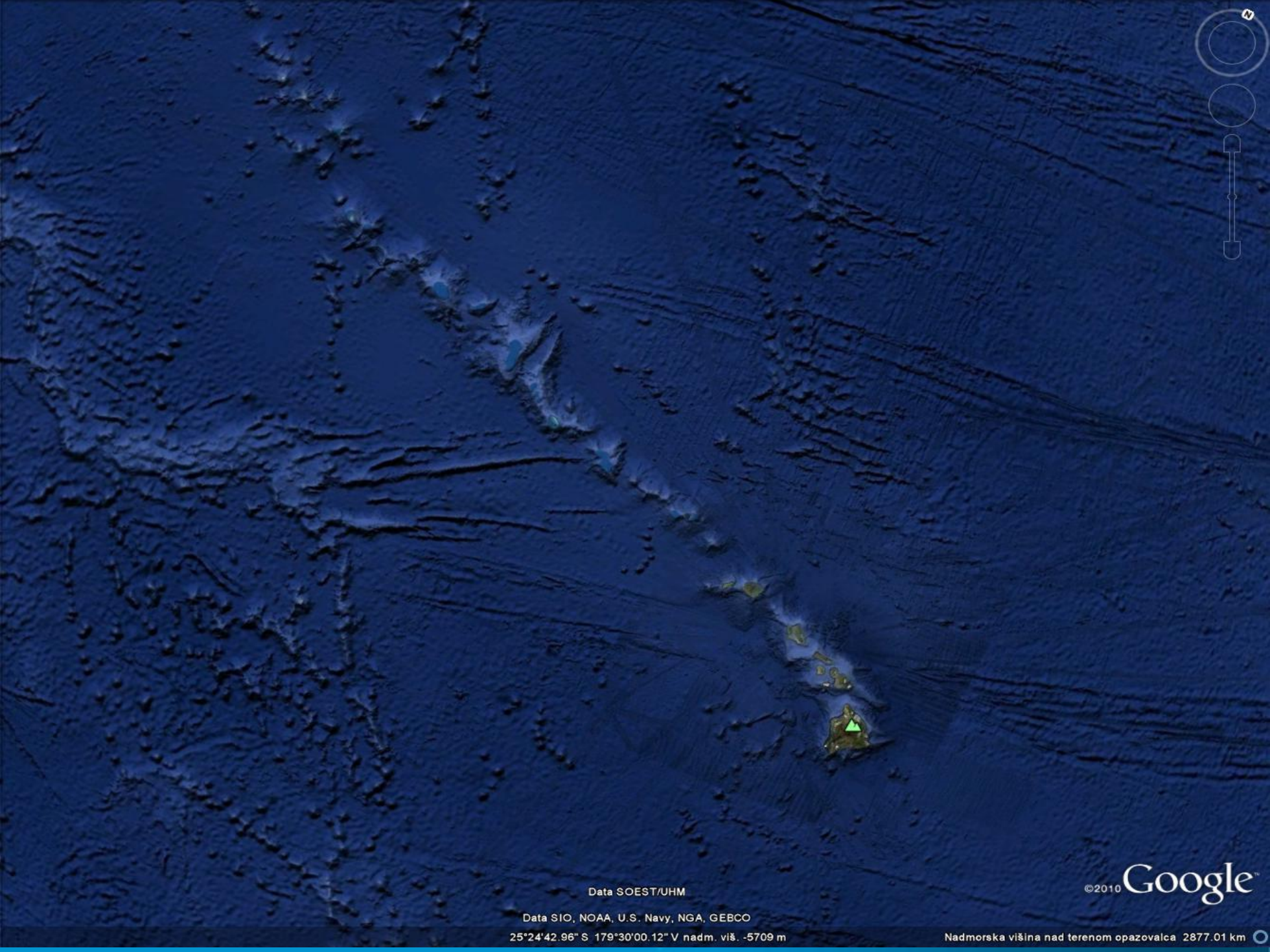
1°09'08.89" J 107°16'52.44" Z nadm. viš. -3743 m

Nadmorska višina nad terenom opazovalca 7142.96 km









Data SOEST/UHM

©2010 Google™

Data SIO, NOAA, U.S. Navy, NGA, GEBCO

25°24'42.96" S 179°30'00.12" V nadm. viš. -5709 m

Nadmorska višina nad terenom opazovalca 2877.01 km





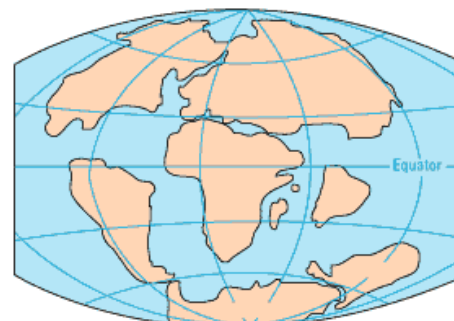
**PERMIAN**  
225 million years ago



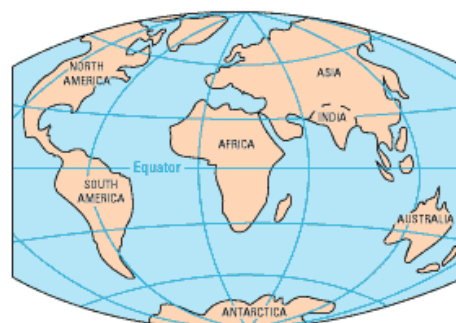
**TRIASSIC**  
200 million years ago



**JURASSIC**  
135 million years ago



**CRETACEOUS**  
65 million years ago



**PRESENT DAY**

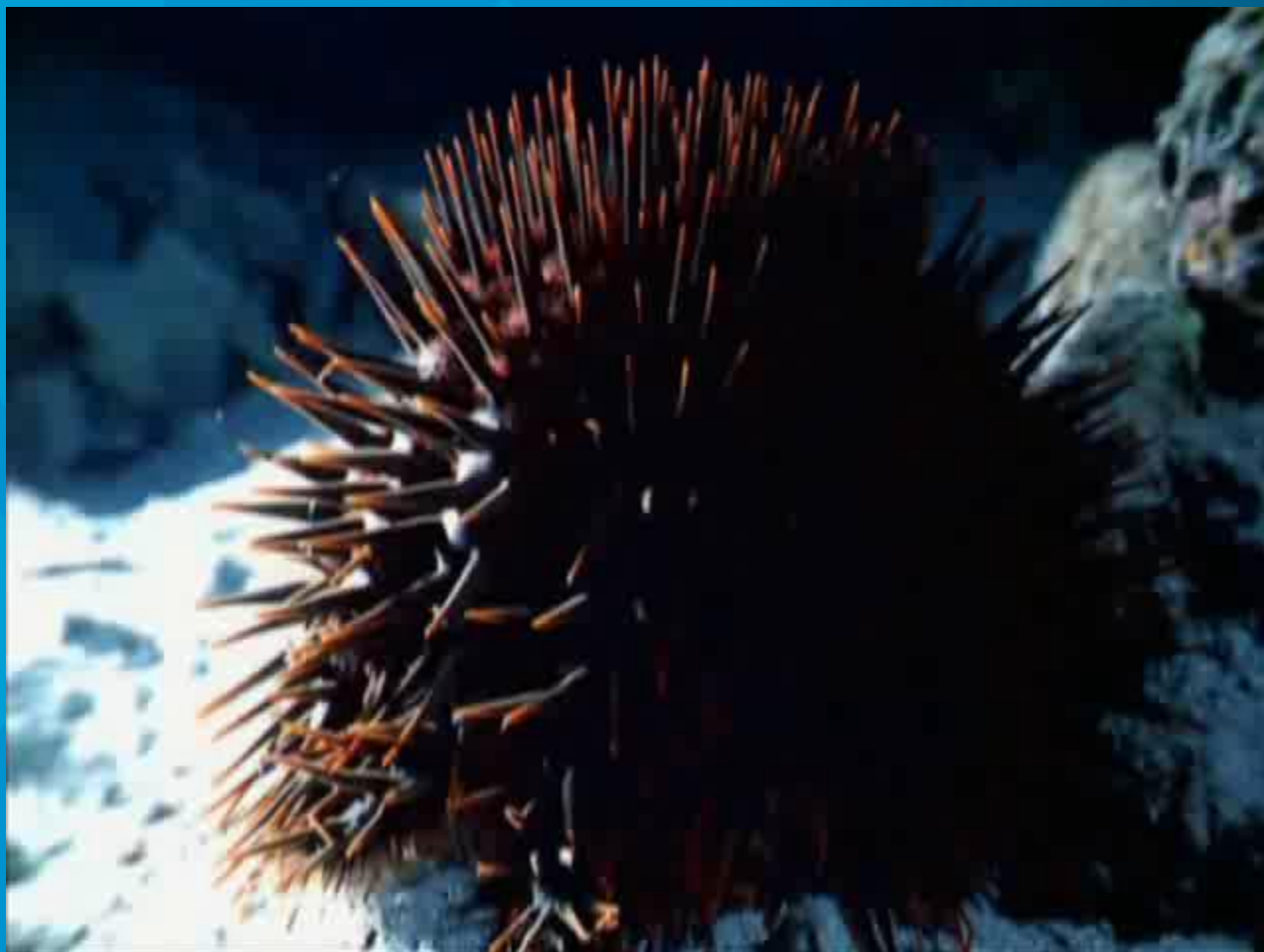




































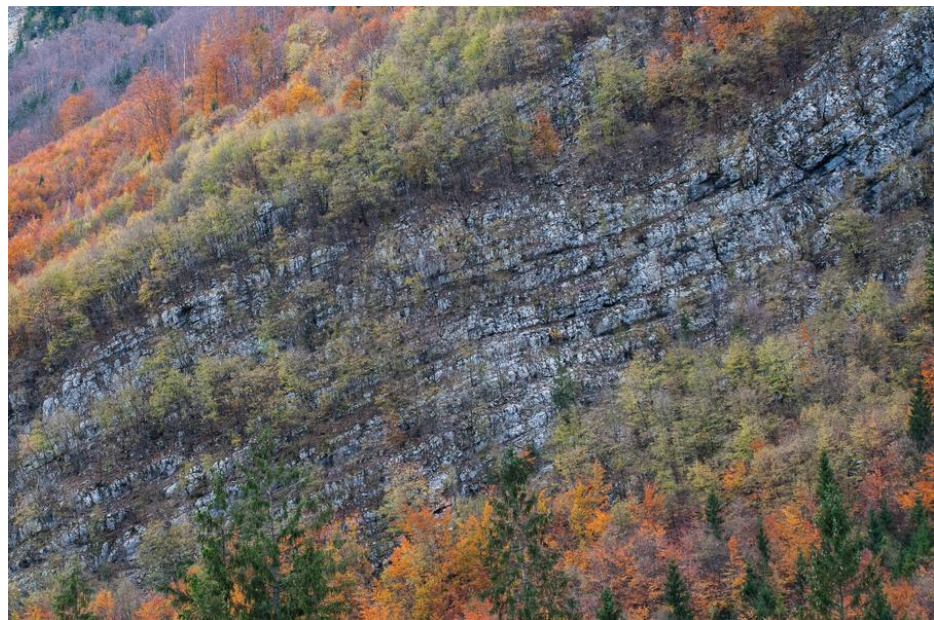
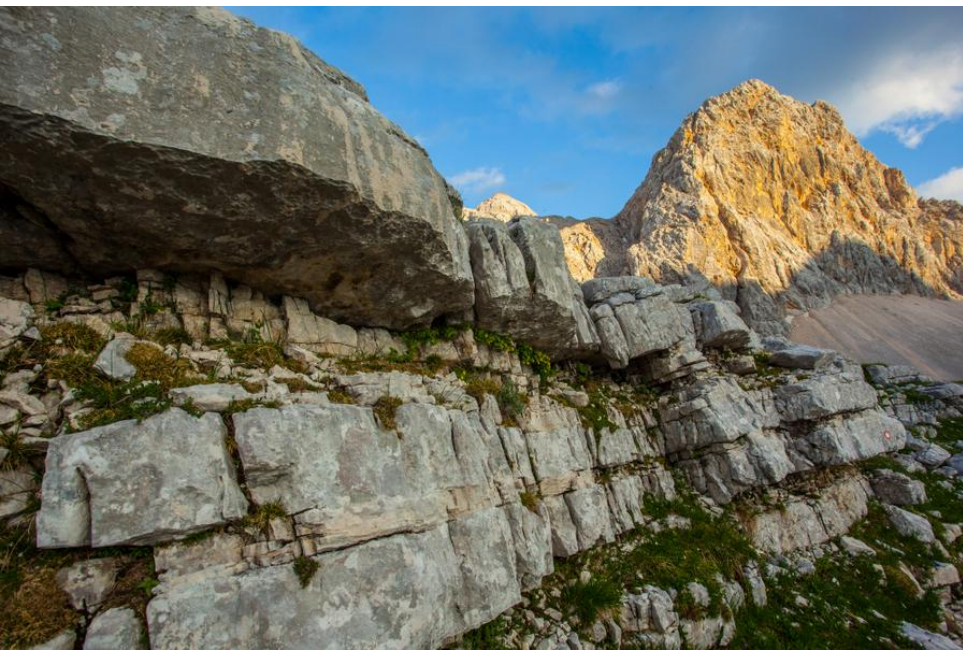




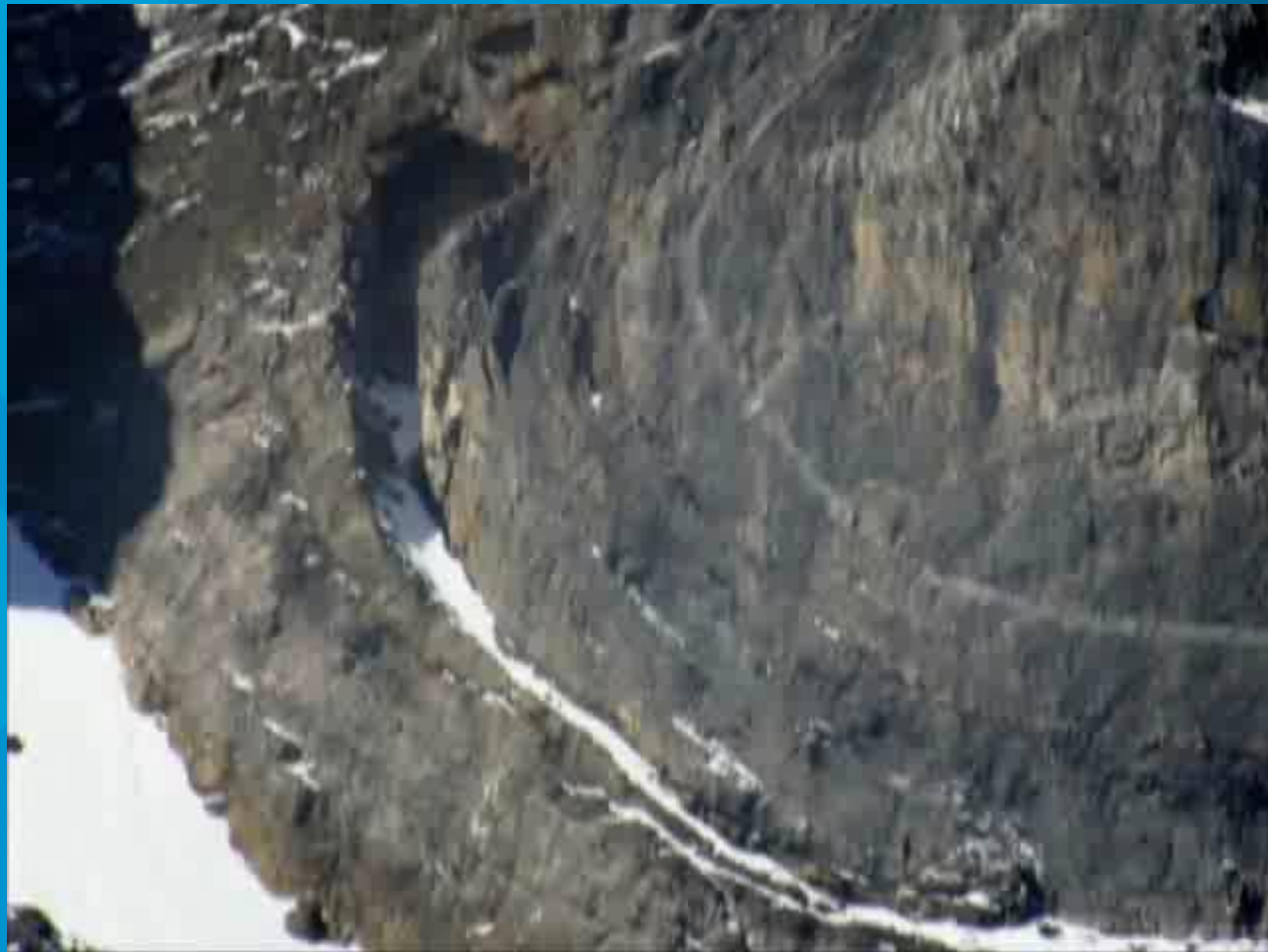




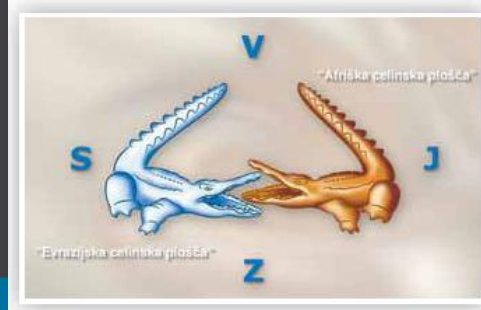








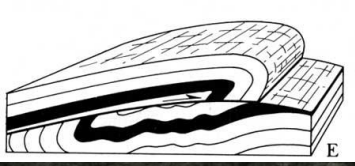
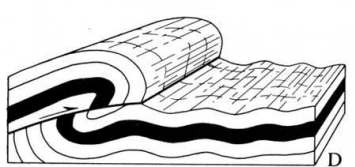
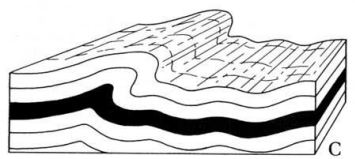
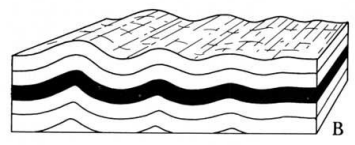
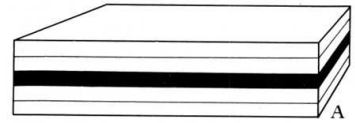












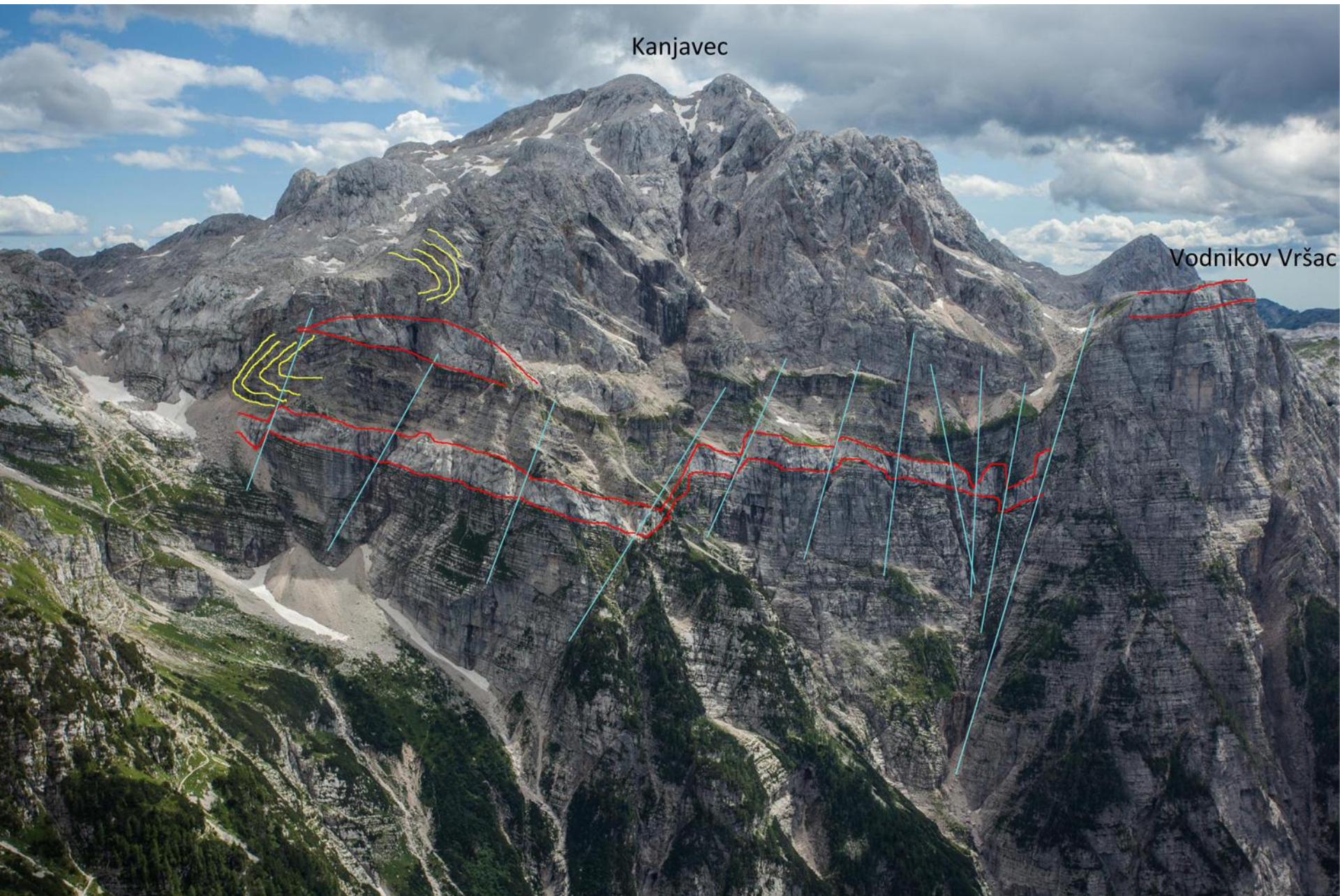






Kanjavec

Vodnikov Vršac











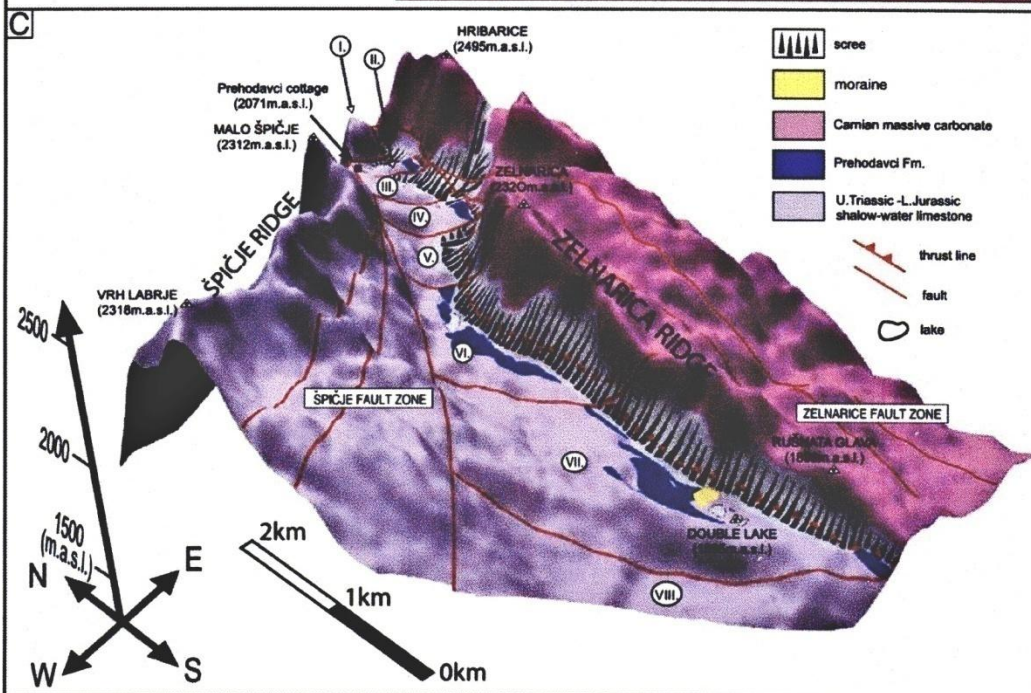
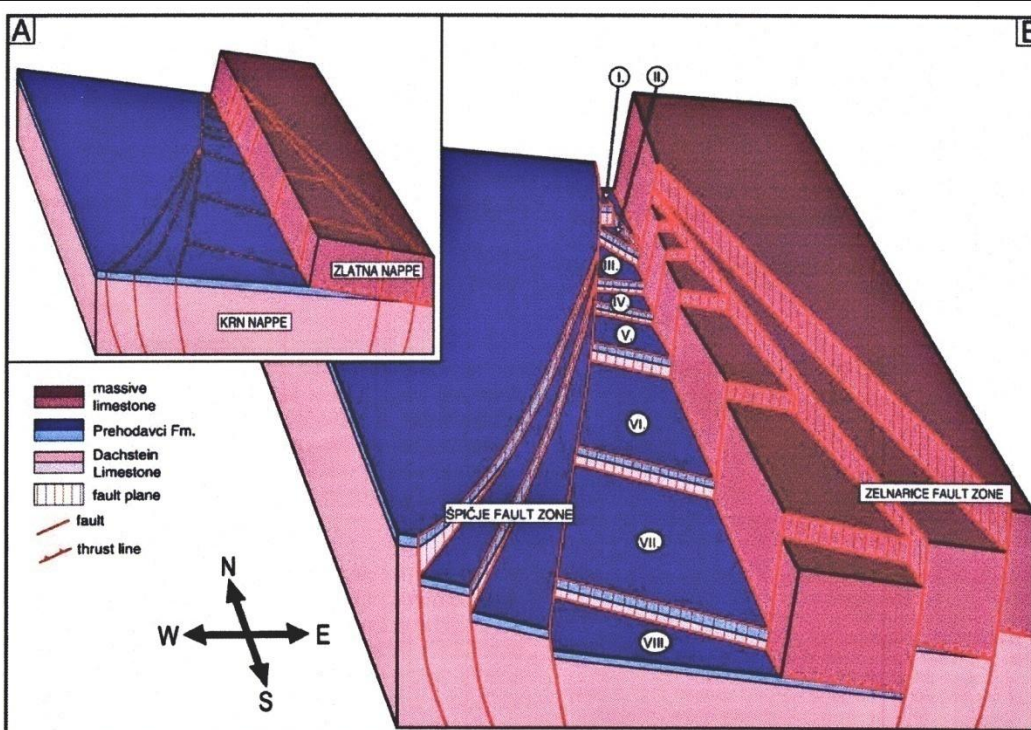












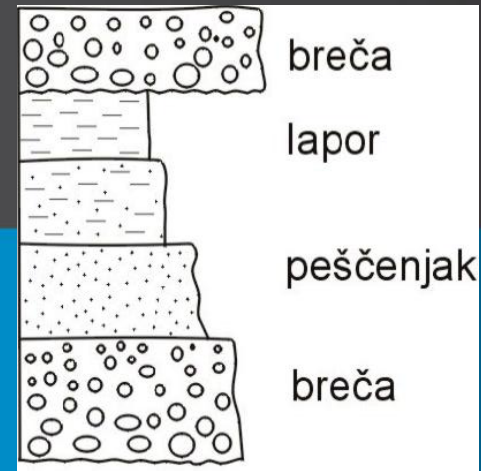
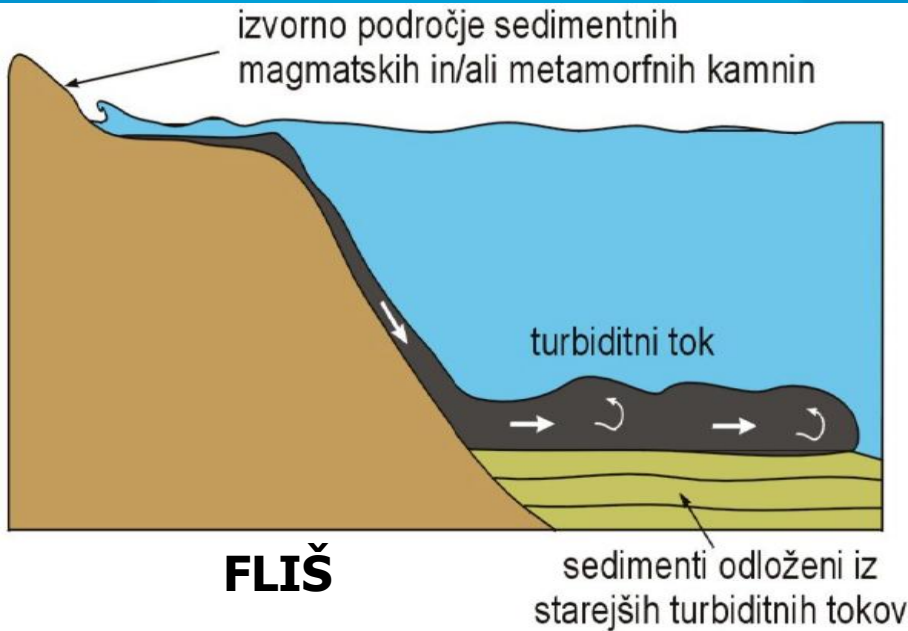












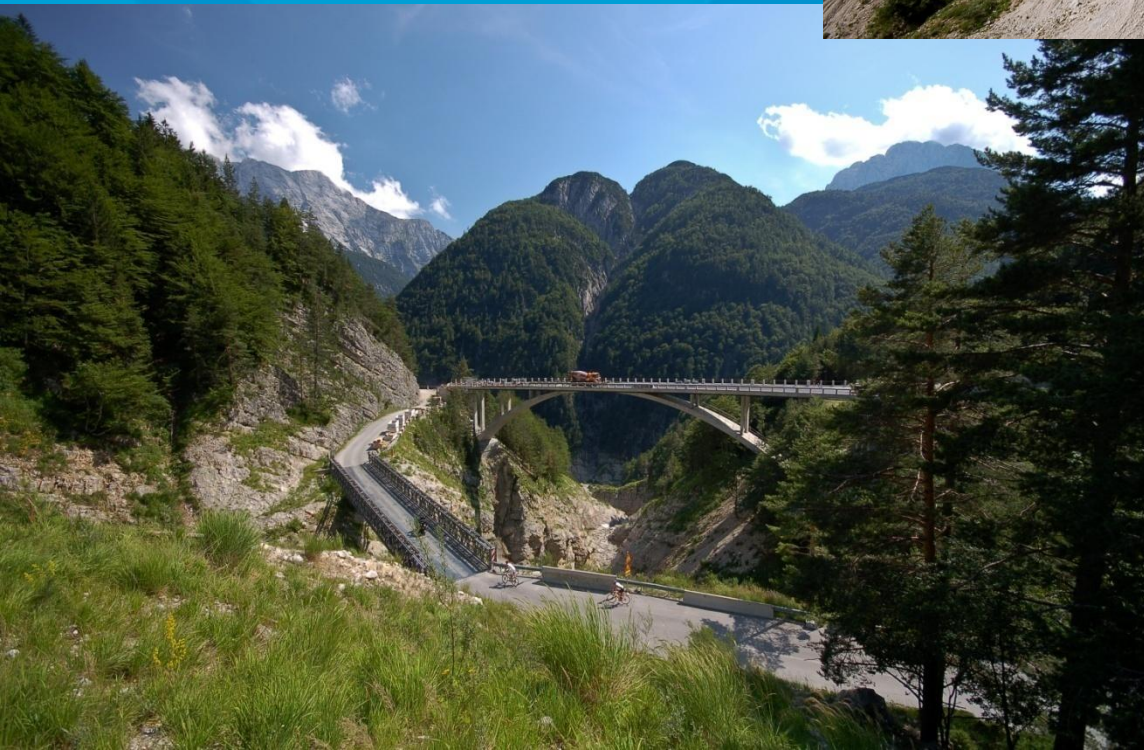
























































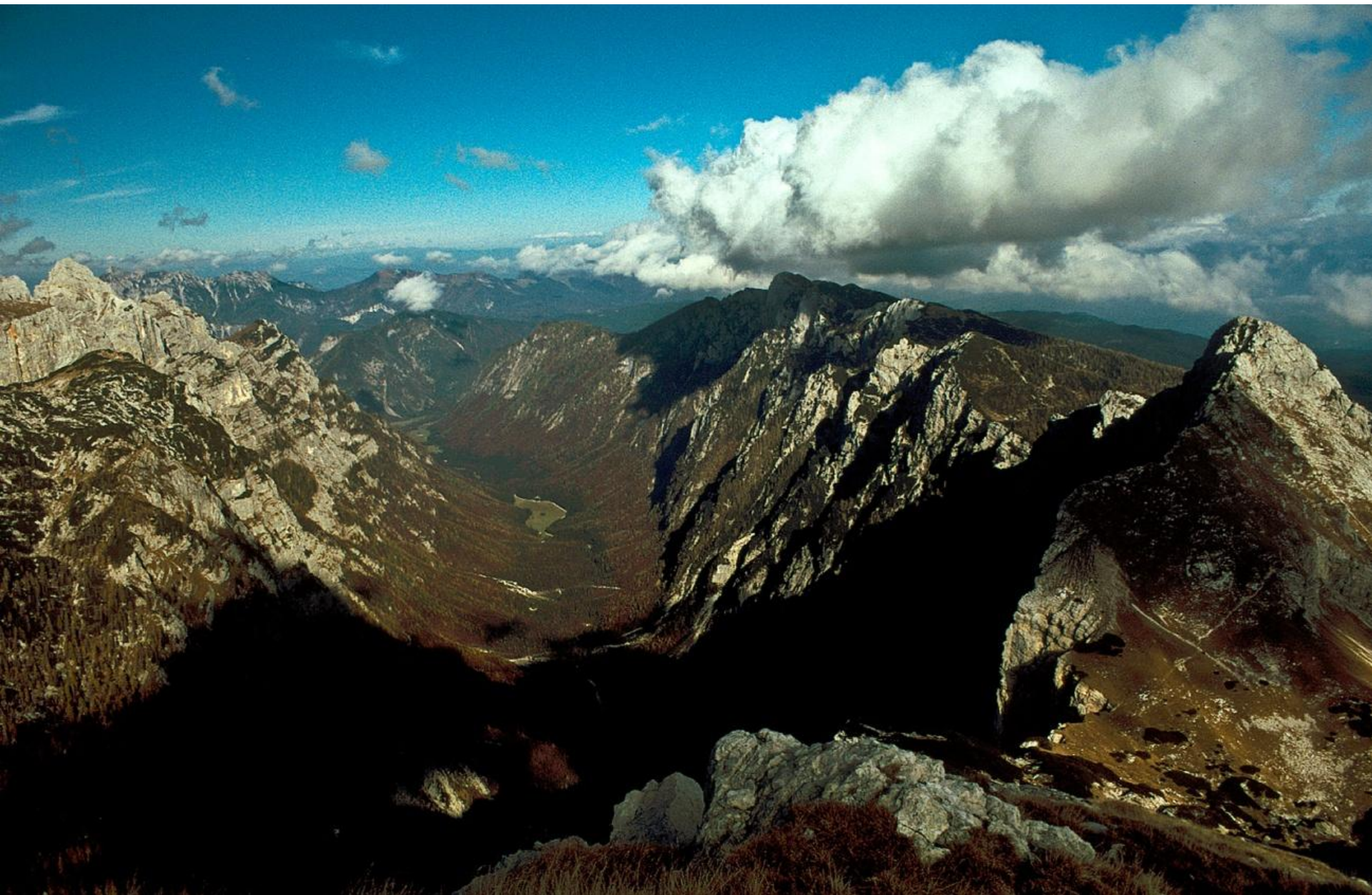








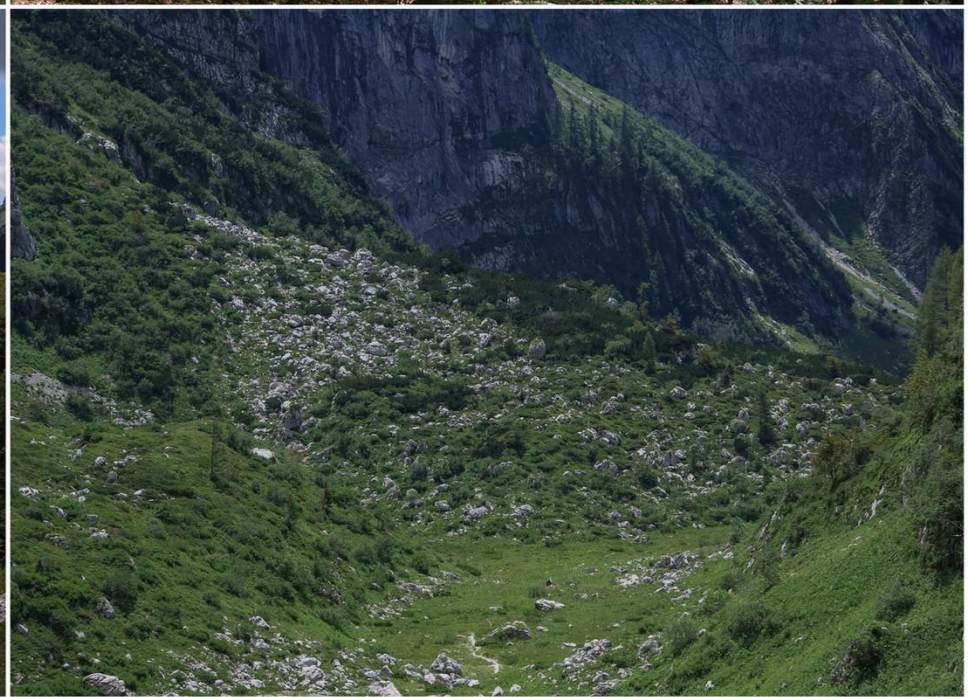
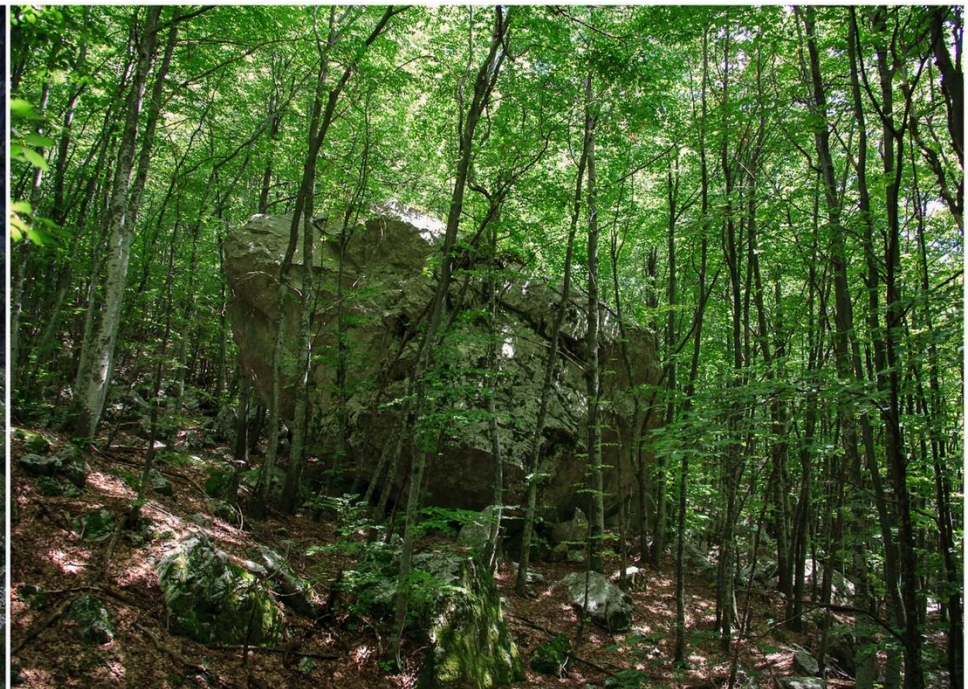












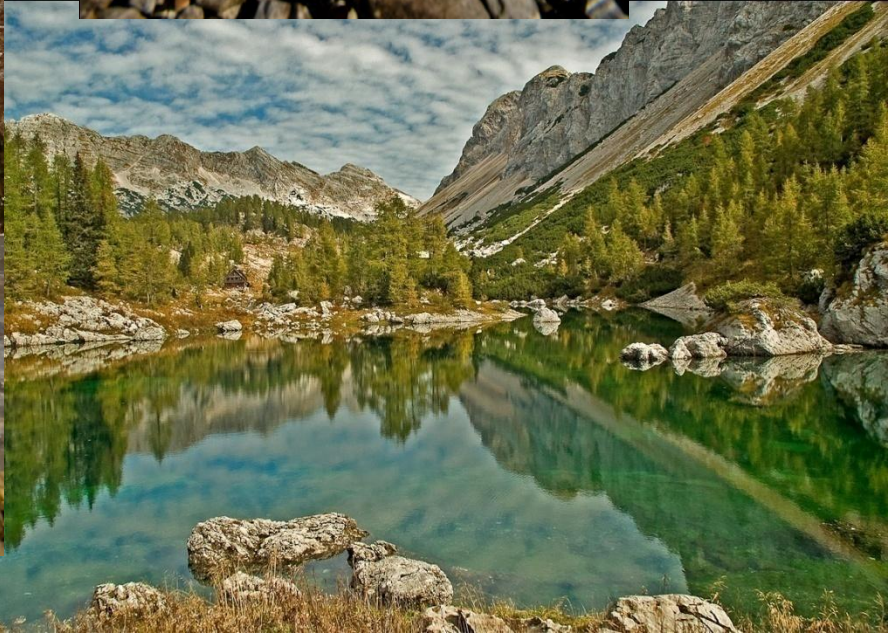




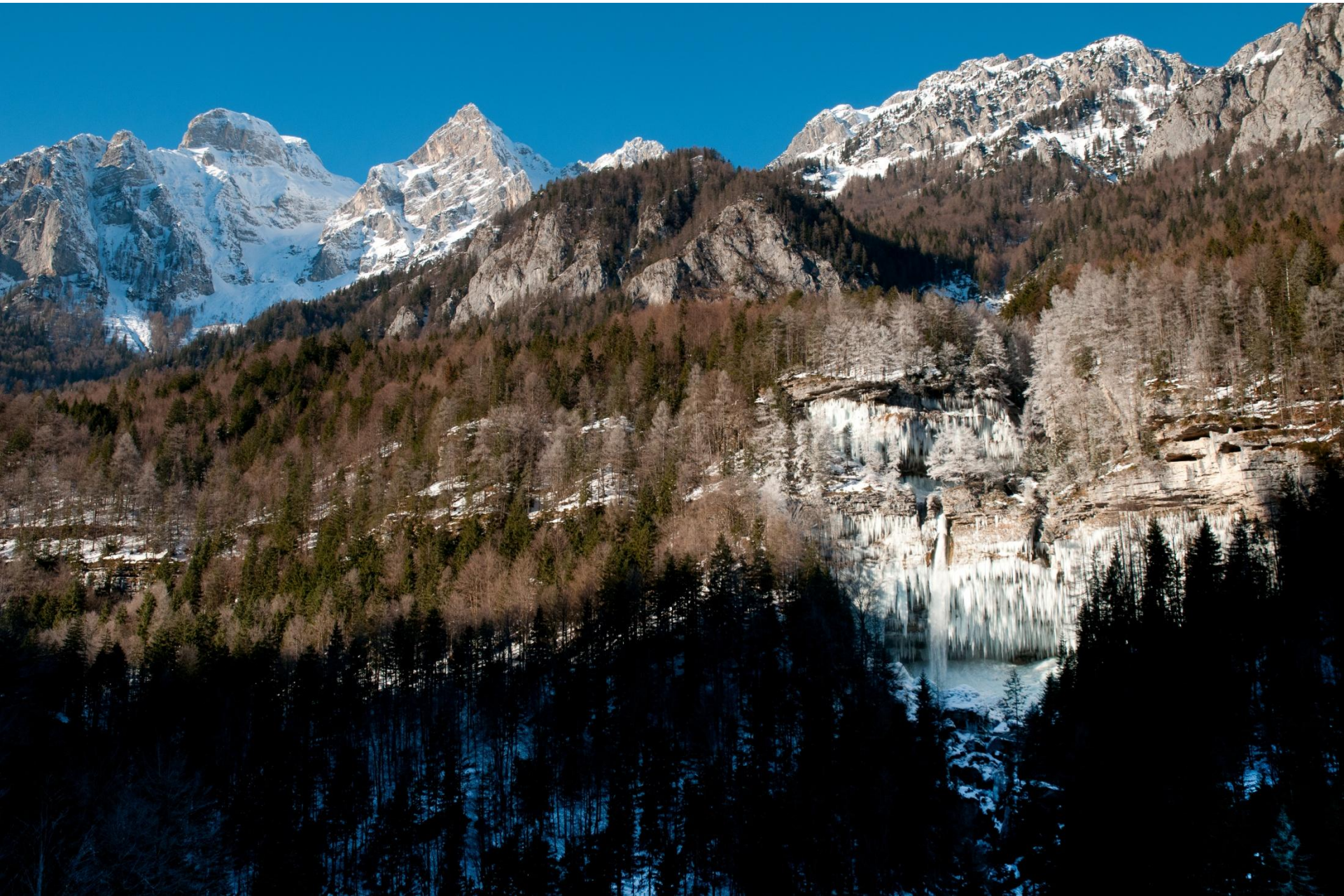
















bohis.com











