

Hauptschule, Klaus – A / 2003

Secondary school

architecture Dietrich | Untertrifaller Architekten ZT GmbH

client Gemeinde Klaus

competition 2001 / 1. Preis

construction 2002-2003

floor space 4.500 m²

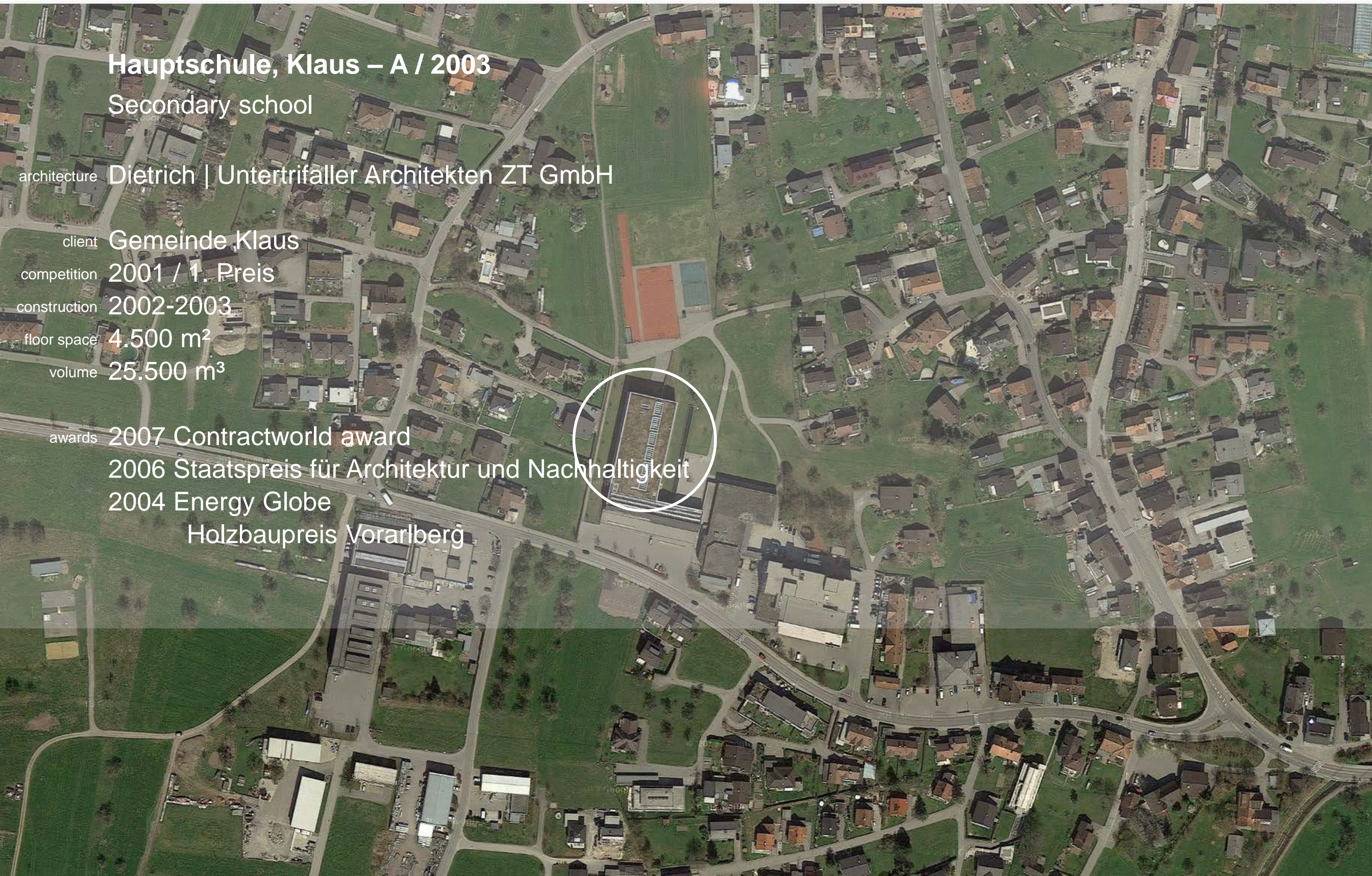
volume 25.500 m³

awards 2007 Contractworld award

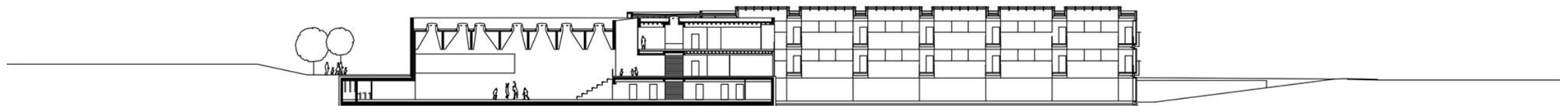
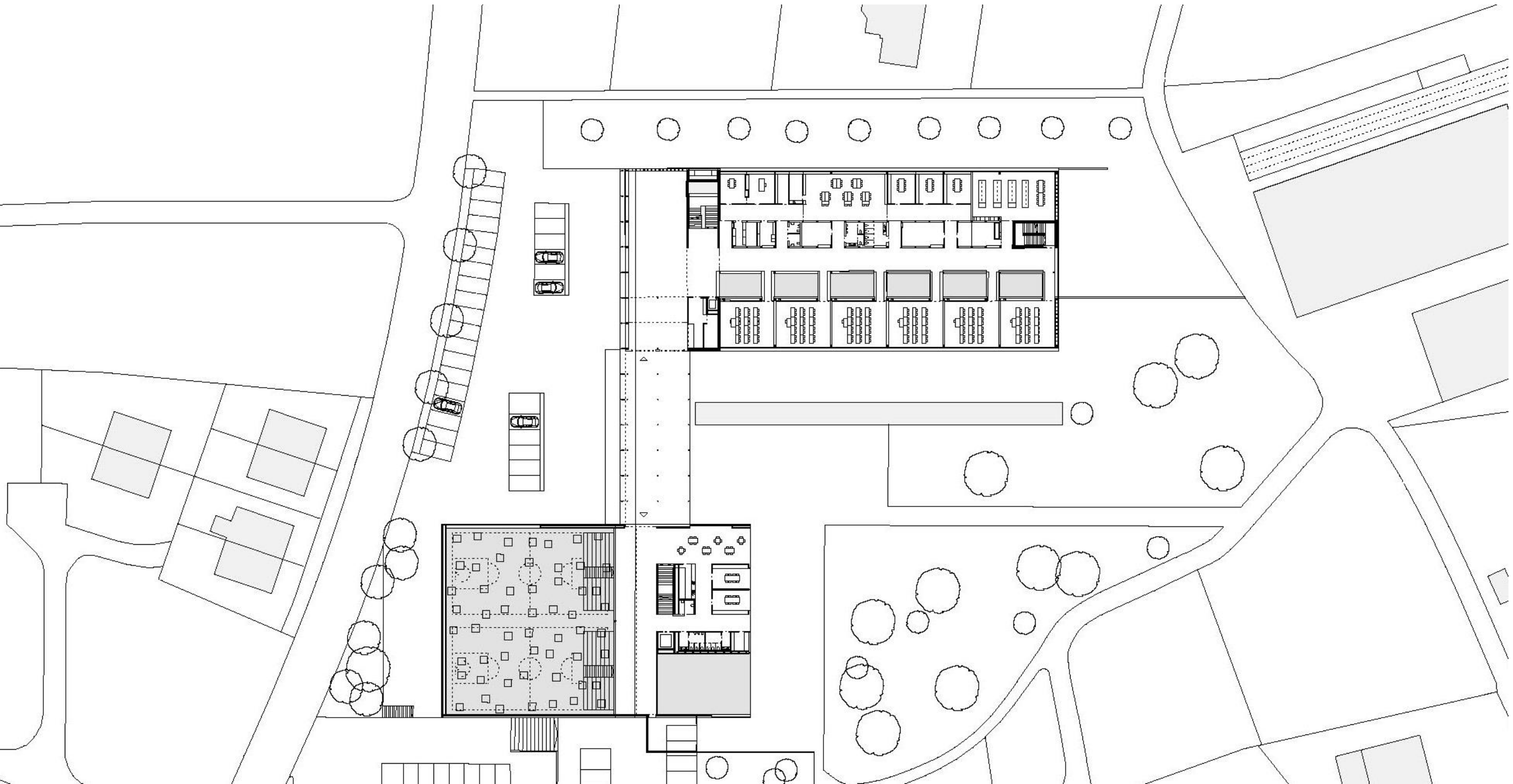
2006 Staatspreis für Architektur und Nachhaltigkeit

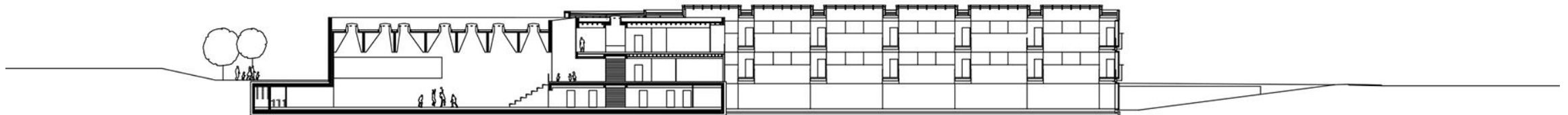
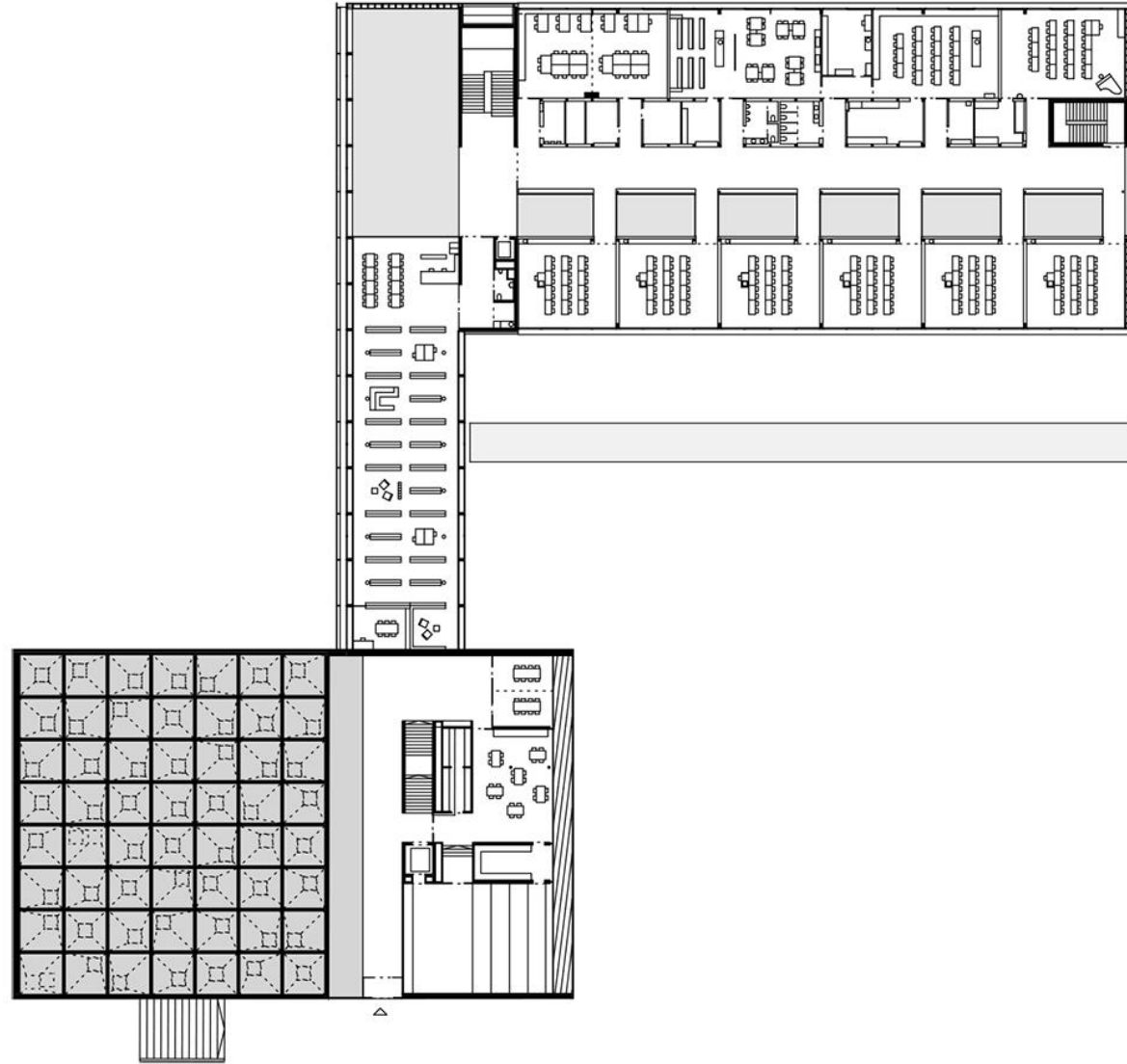
2004 Energy Globe

Holzbaupreis Vorarlberg

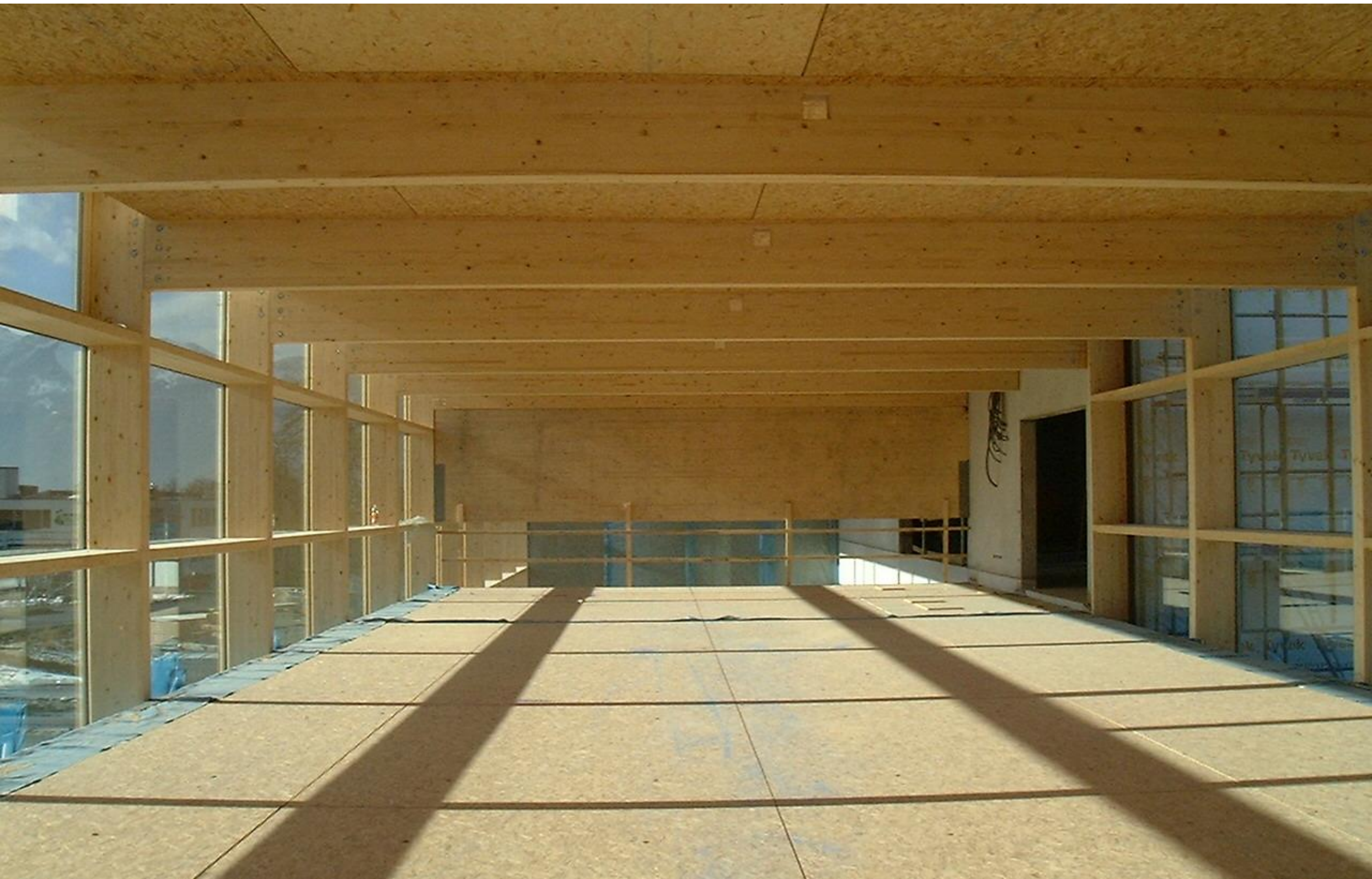




















Dietrich | Untertrifaller
Architekten













Sporthalle und Mehrzweckhalle, Klaus – A / 2014
Gymnasium and multi function building

architecture Dietrich | Untertrifaller Architekten ZT GmbH

client Gemeinde Klaus

competition 2001 / 1. Preis (1. Abschnitt Schule 2002-2003)

construction 2013-2014

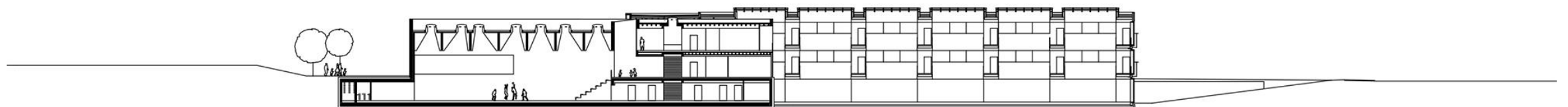
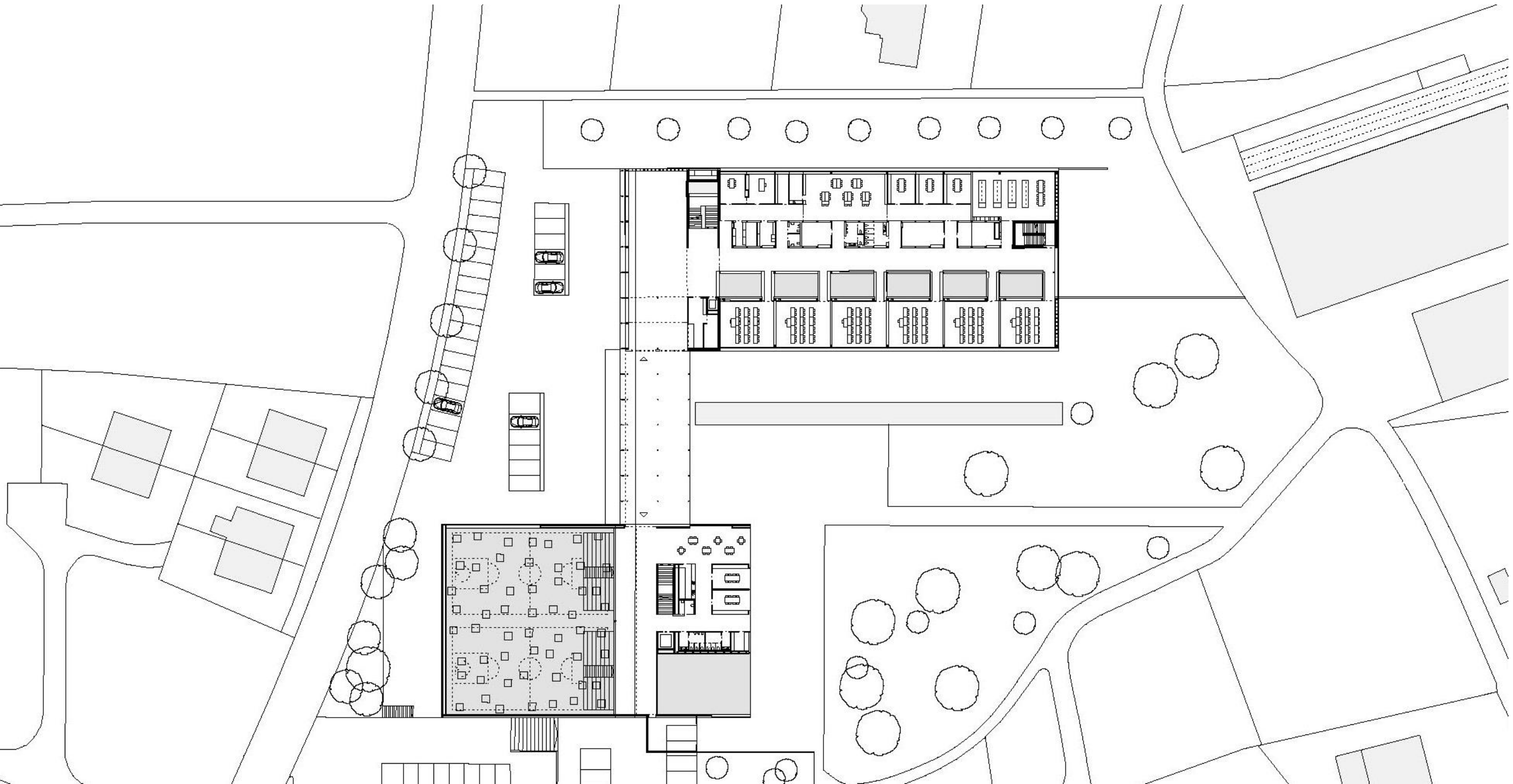
floor space 2.400 m²

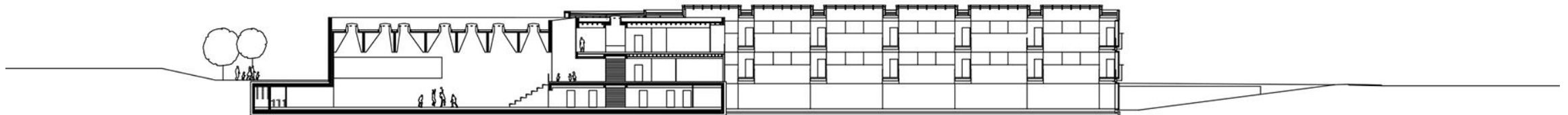
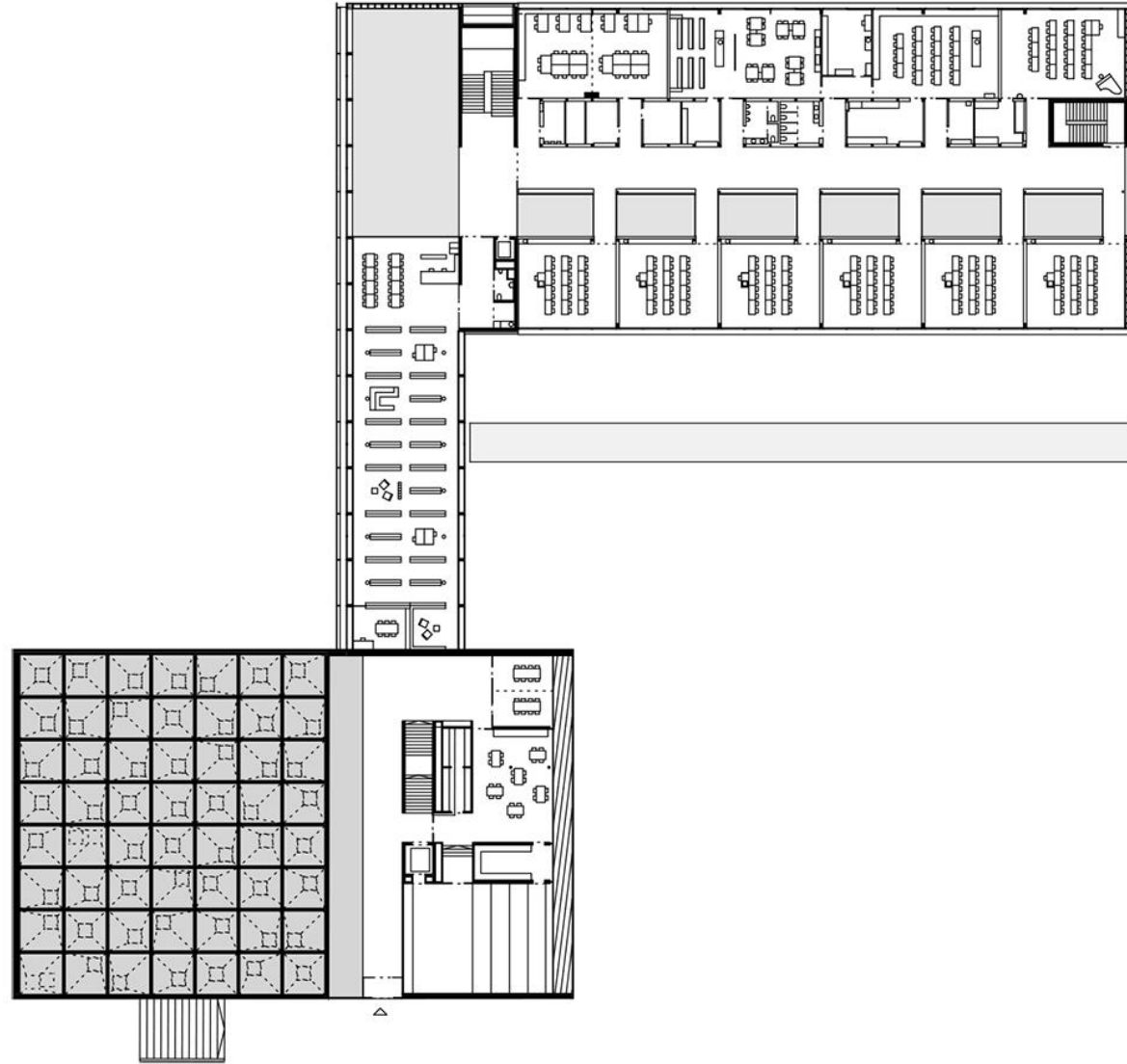
volume 18.500 m³

awards 2015 Holzbaupreis Vorarlberg



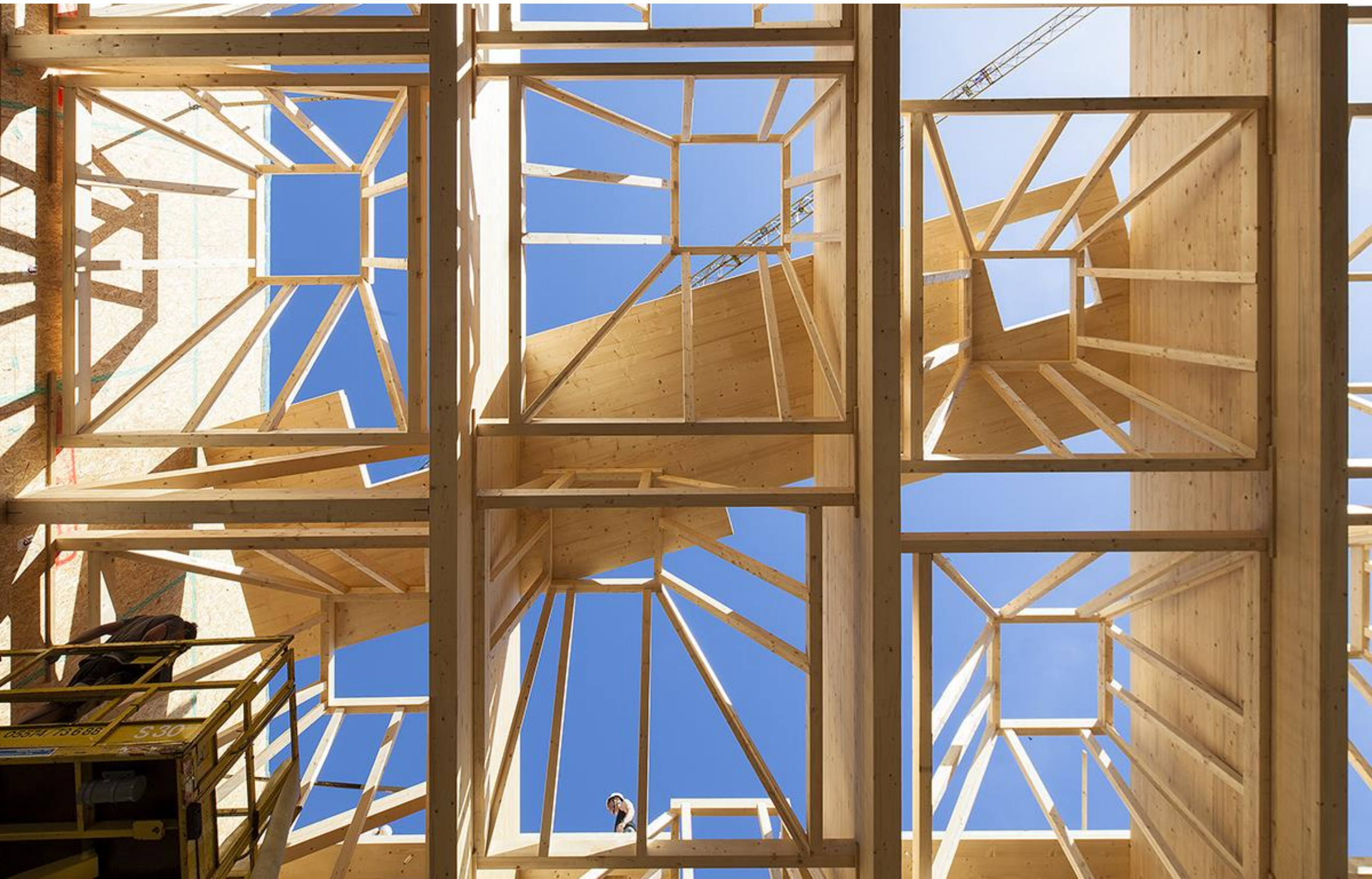




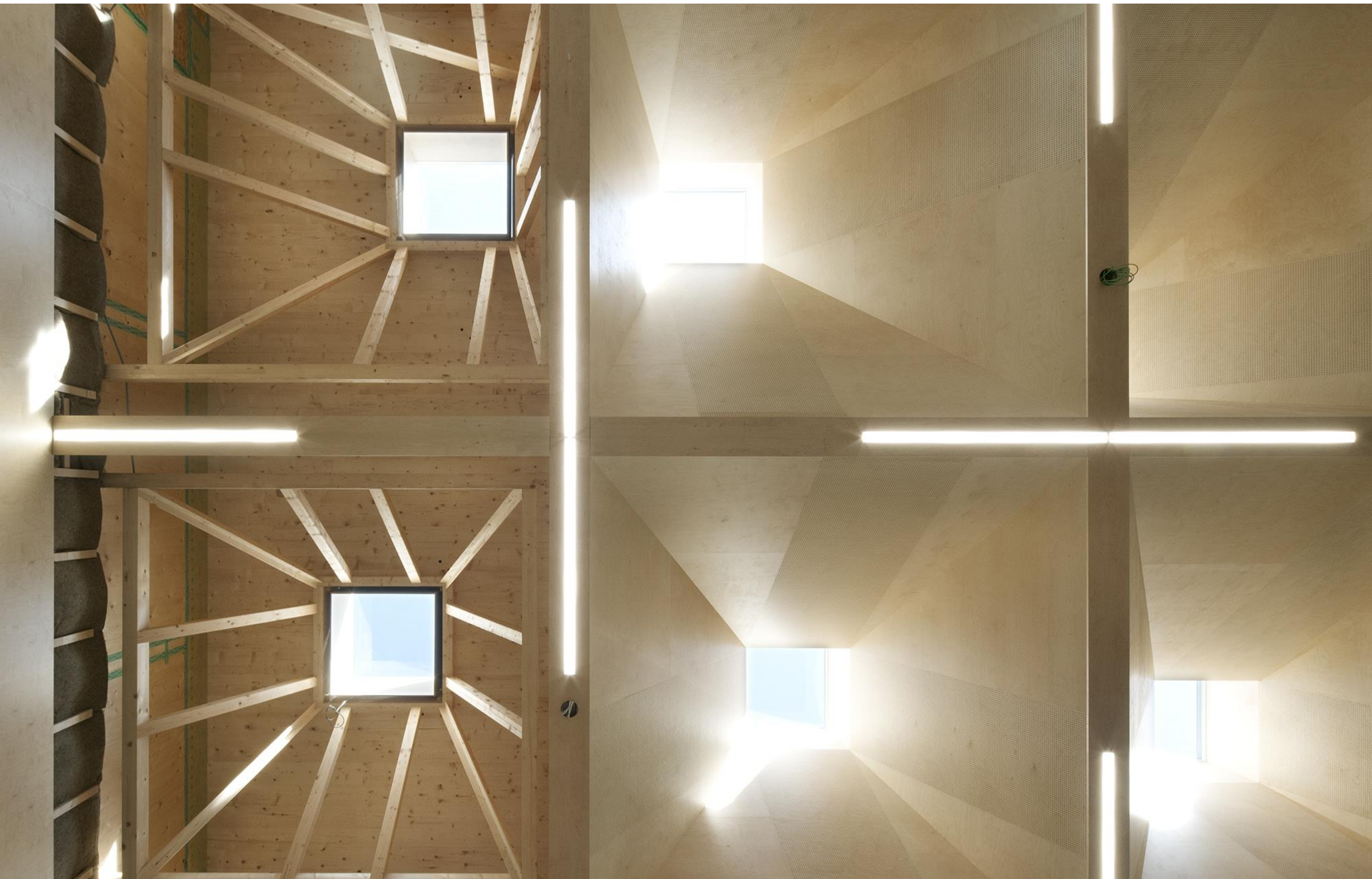


Dietrich | Untertrifaller
Architekten

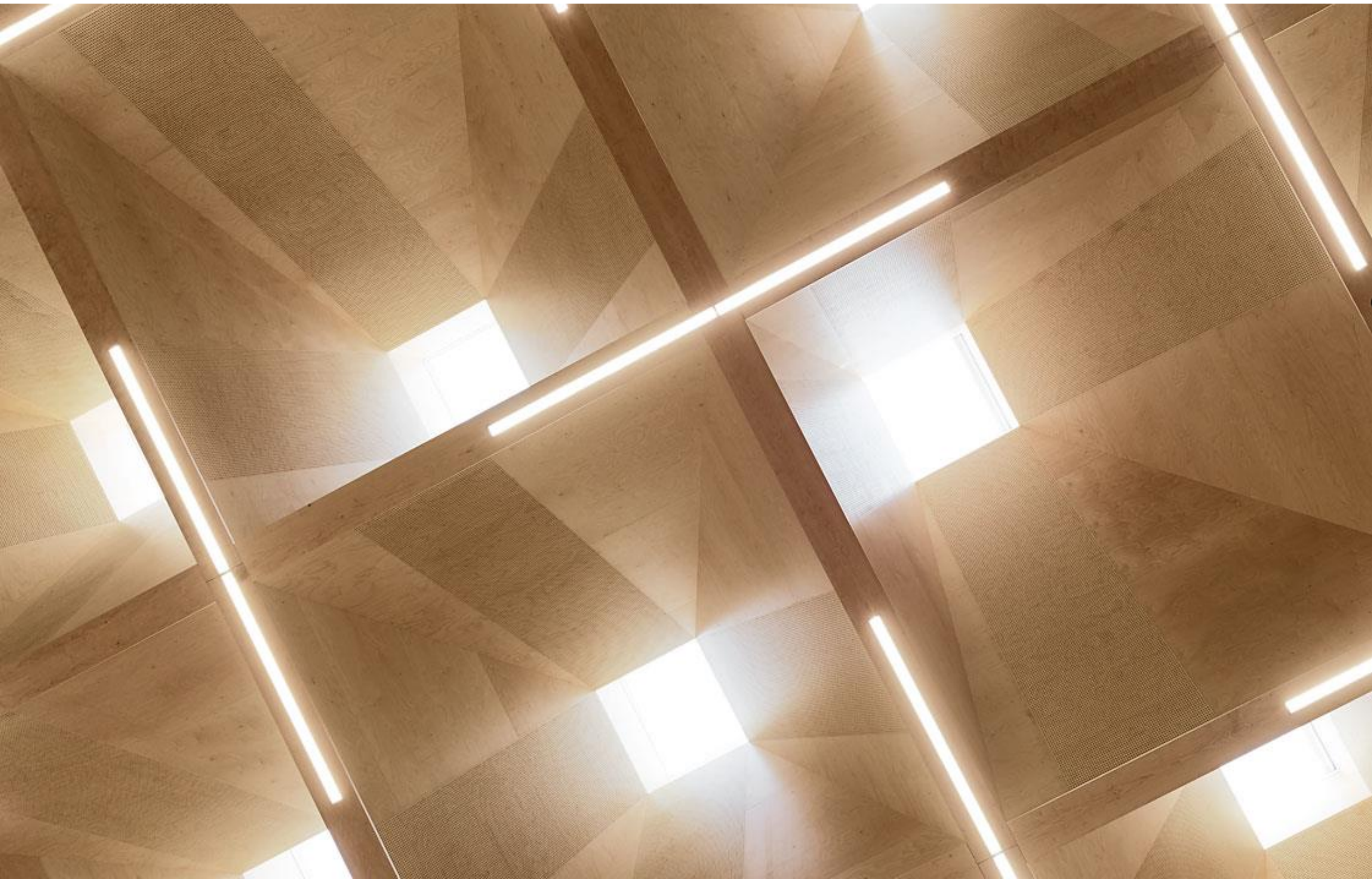






















Volksschule Unterdorf, Höchst – A / 2016

Primary school

architecture Dietrich | Untertrifaller Architekten ZT GmbH

client Gemeinde Höchst

competition 2013 / 1. Preis

construction 2015-2016

floor space 2.530 m²

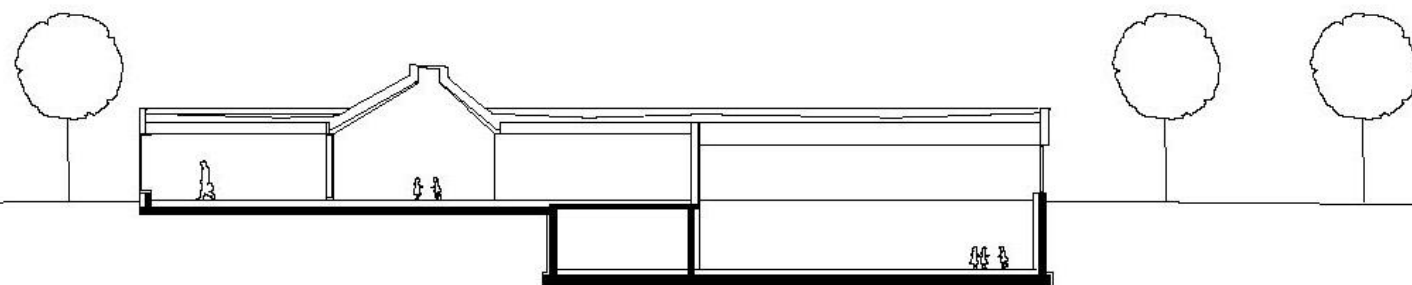
Volume 18.470 m³

capacity 200 SchülerInnen / 8 Klassen



















Dietrich | Untertrifaller
Architekten













K E B O H F
T R A U S S D Z O R Ü H A G E L
F R U C H T N S W E N G L L V
L L C H S C B E N N T A V E R D I E N S
T E L U M E T F H A T G E O K B S T E I N
Z Z K O R N R V O G E L







Campus im Olympiapark TUM, München – D /2017/2022

Sport campus

Architecture Dietrich | Untertrifaller Architekten ZT GmbH
cooperation Balliana Schubert Landschaftsarchitekten

client Bayern, Stadt München

competition 2015 / 1. Preis

construction 2017-2020 / 2022

floor space 28.000 m²

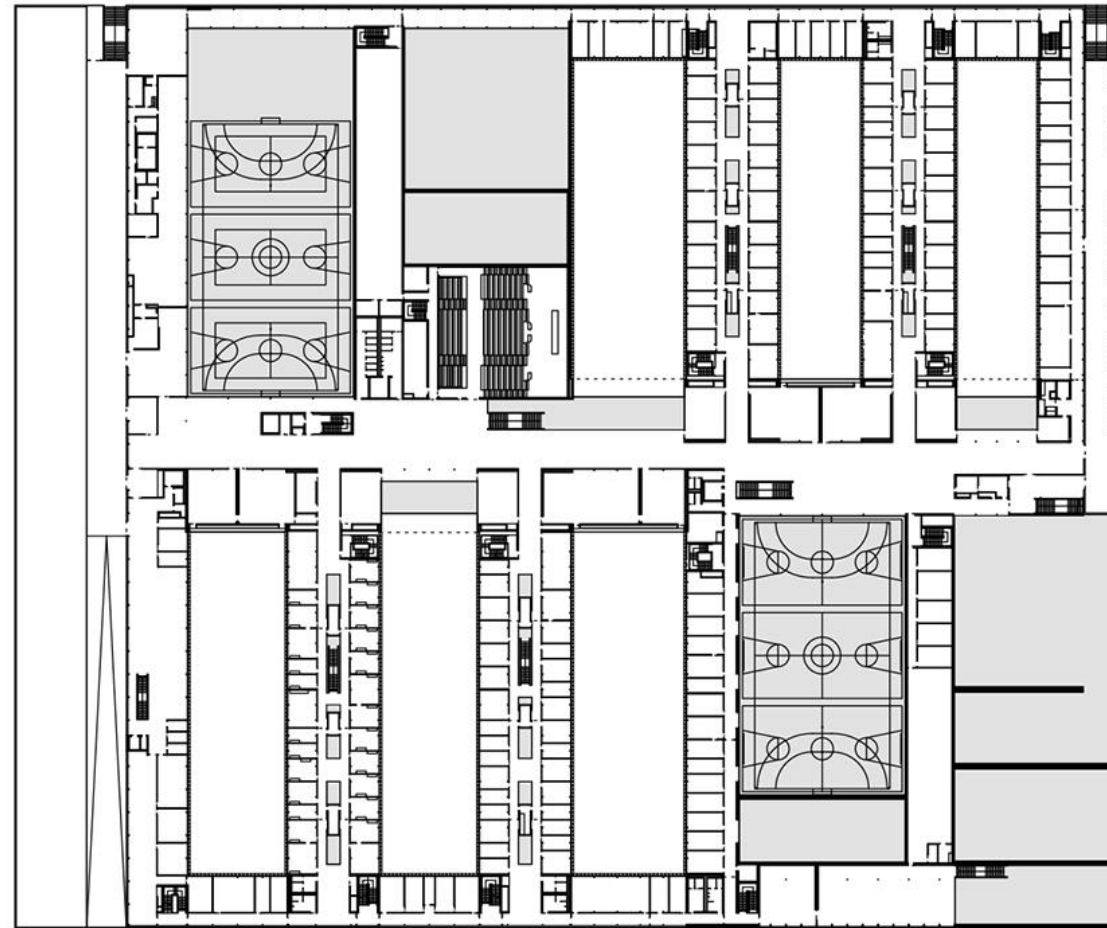
capacity 14 Sporthallen



























Dietrich | Untertrifaller
Architekten

