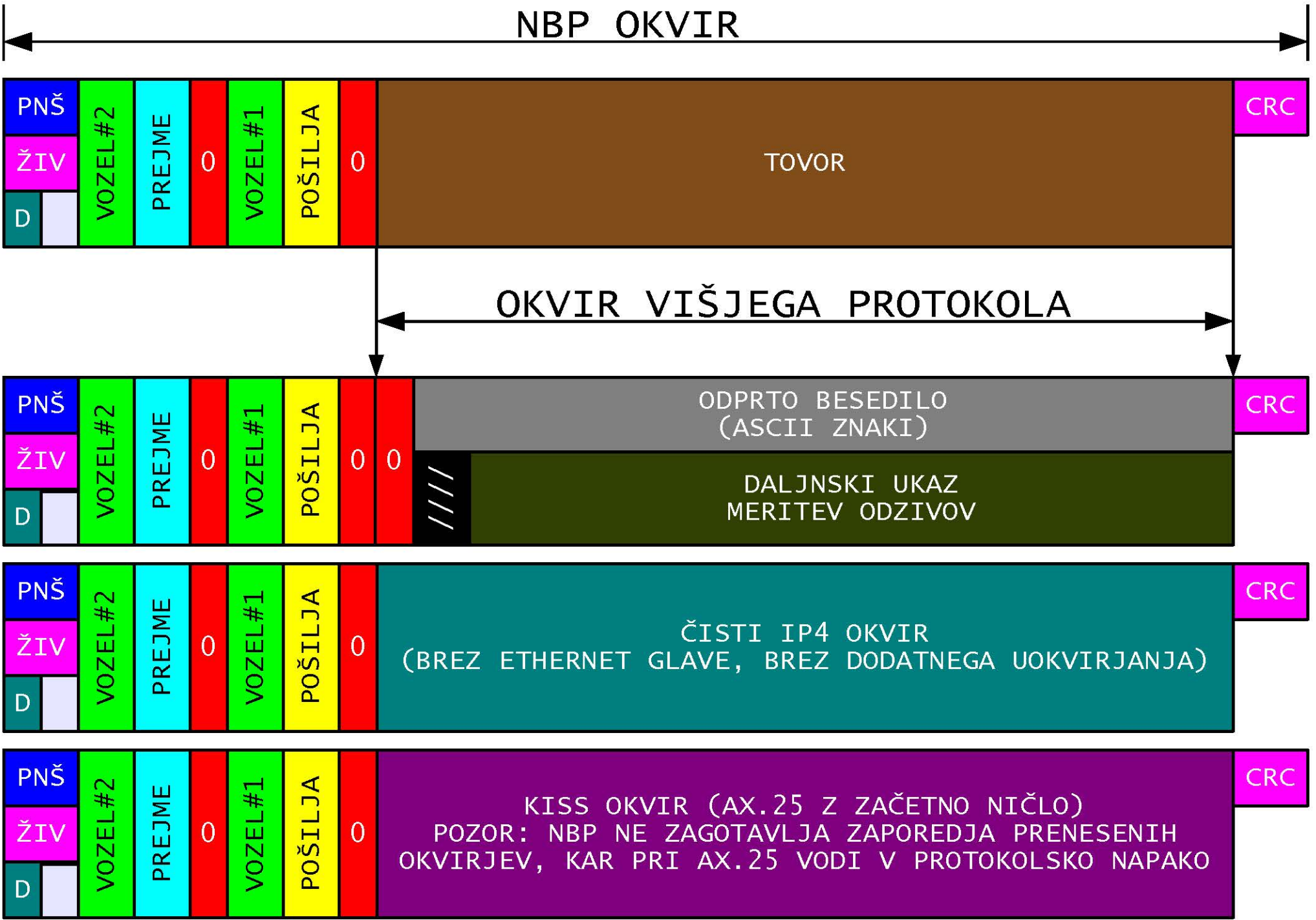


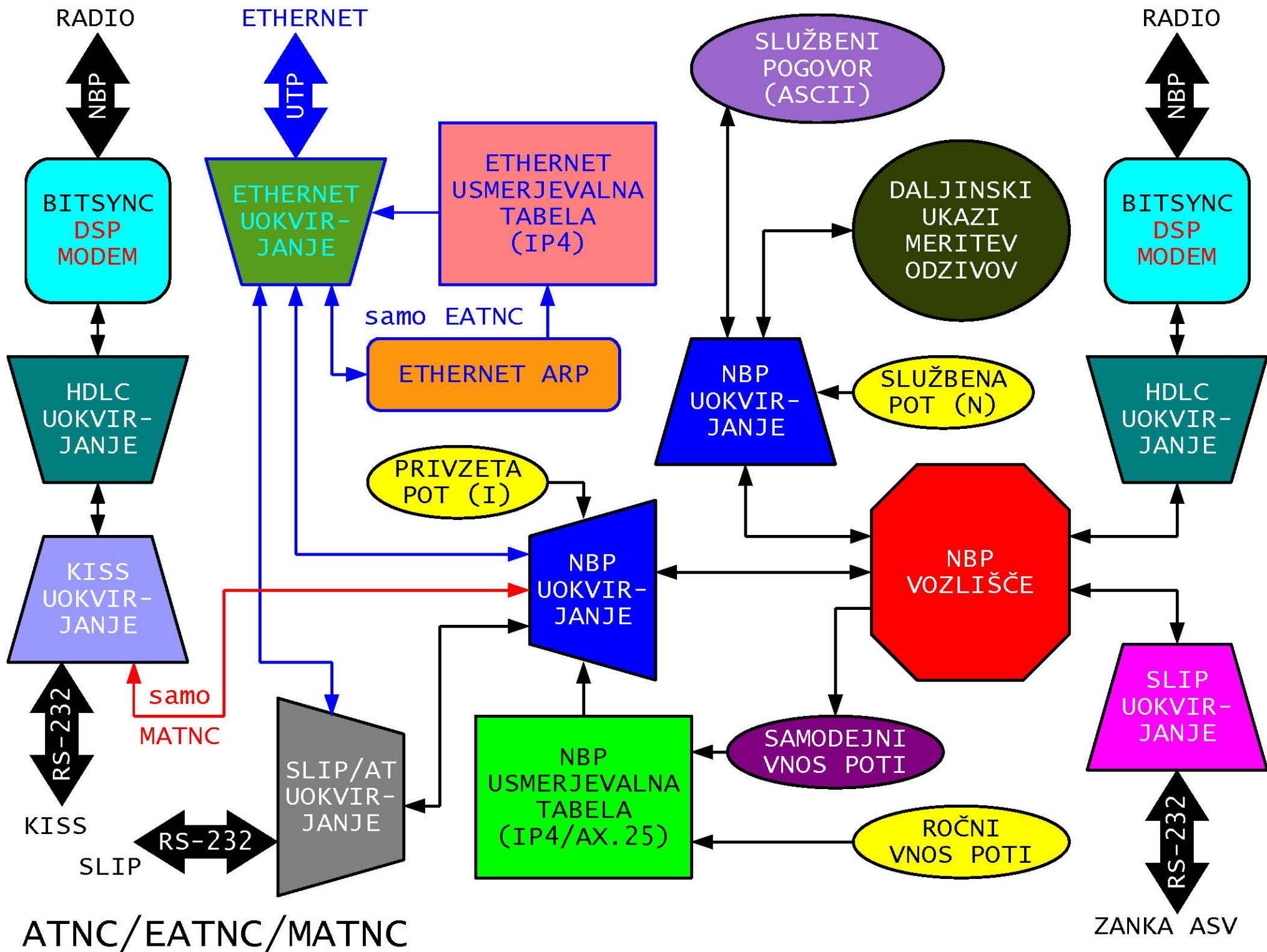
# PRENOS PODATKOVNIH OKVIRJEV SKOZI NBP

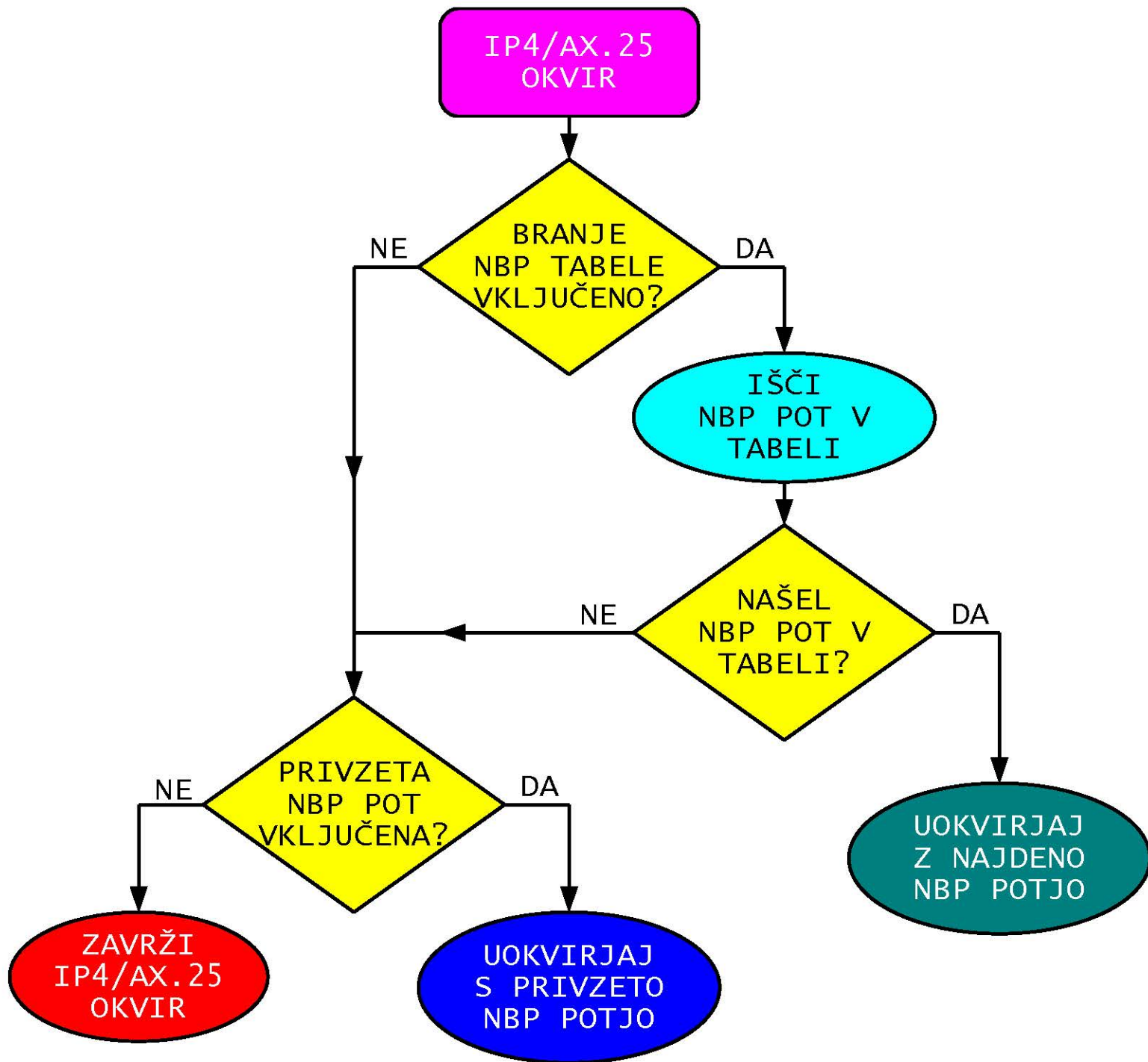
Matjaž Vidmar, S53MV

FE, Ljubljana, 14.04.2012

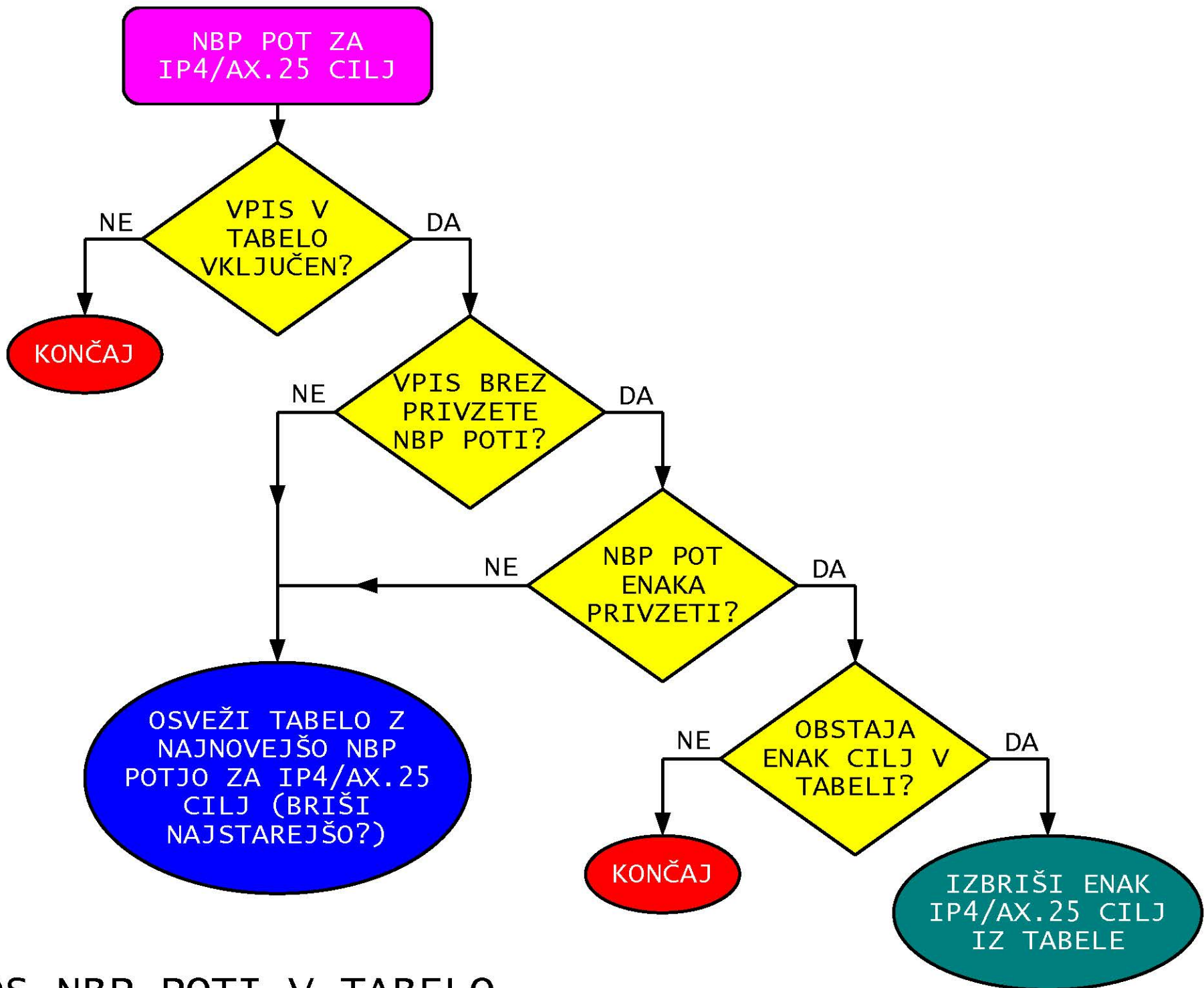


PODATKOVNI OKVIRJI V NBP

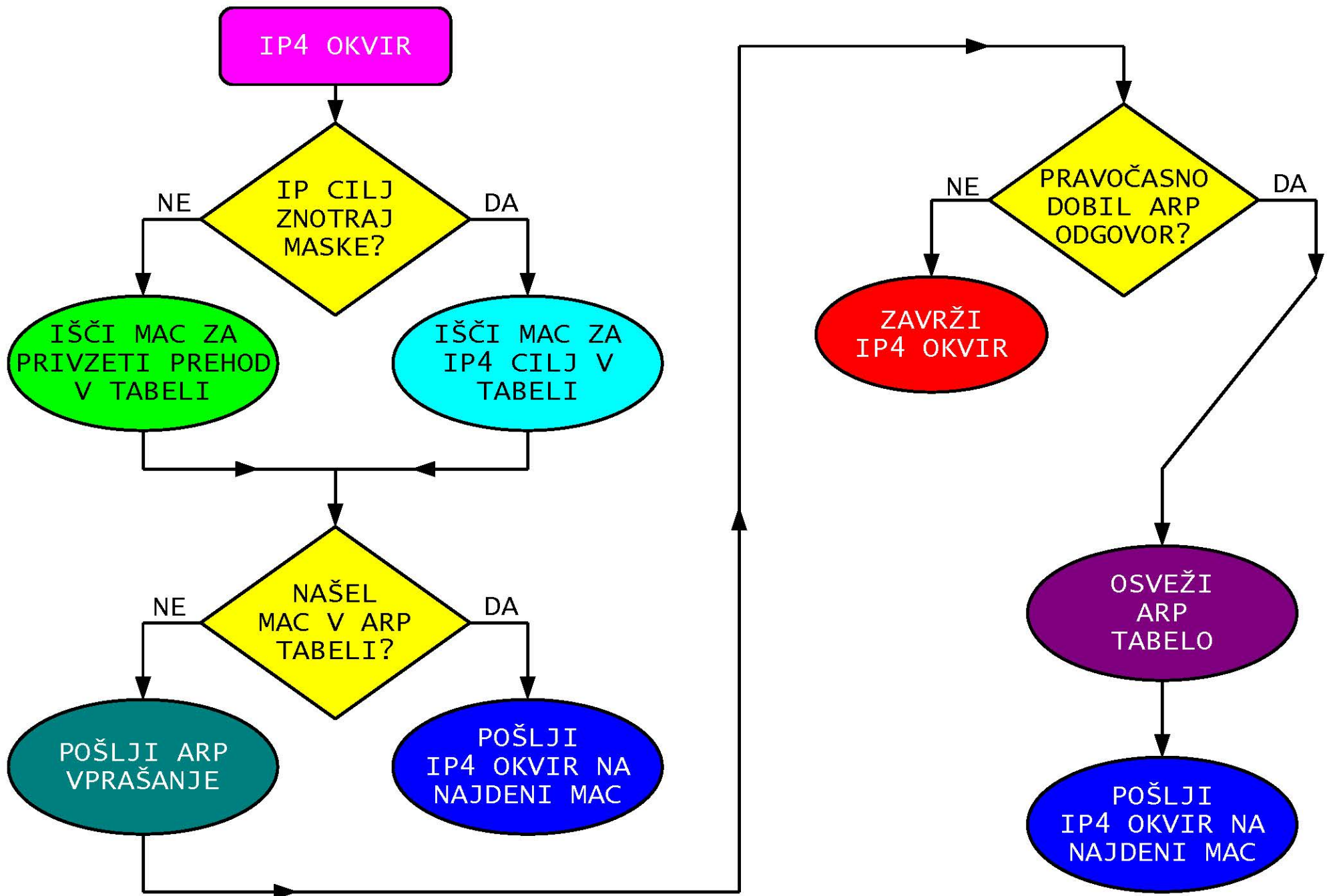




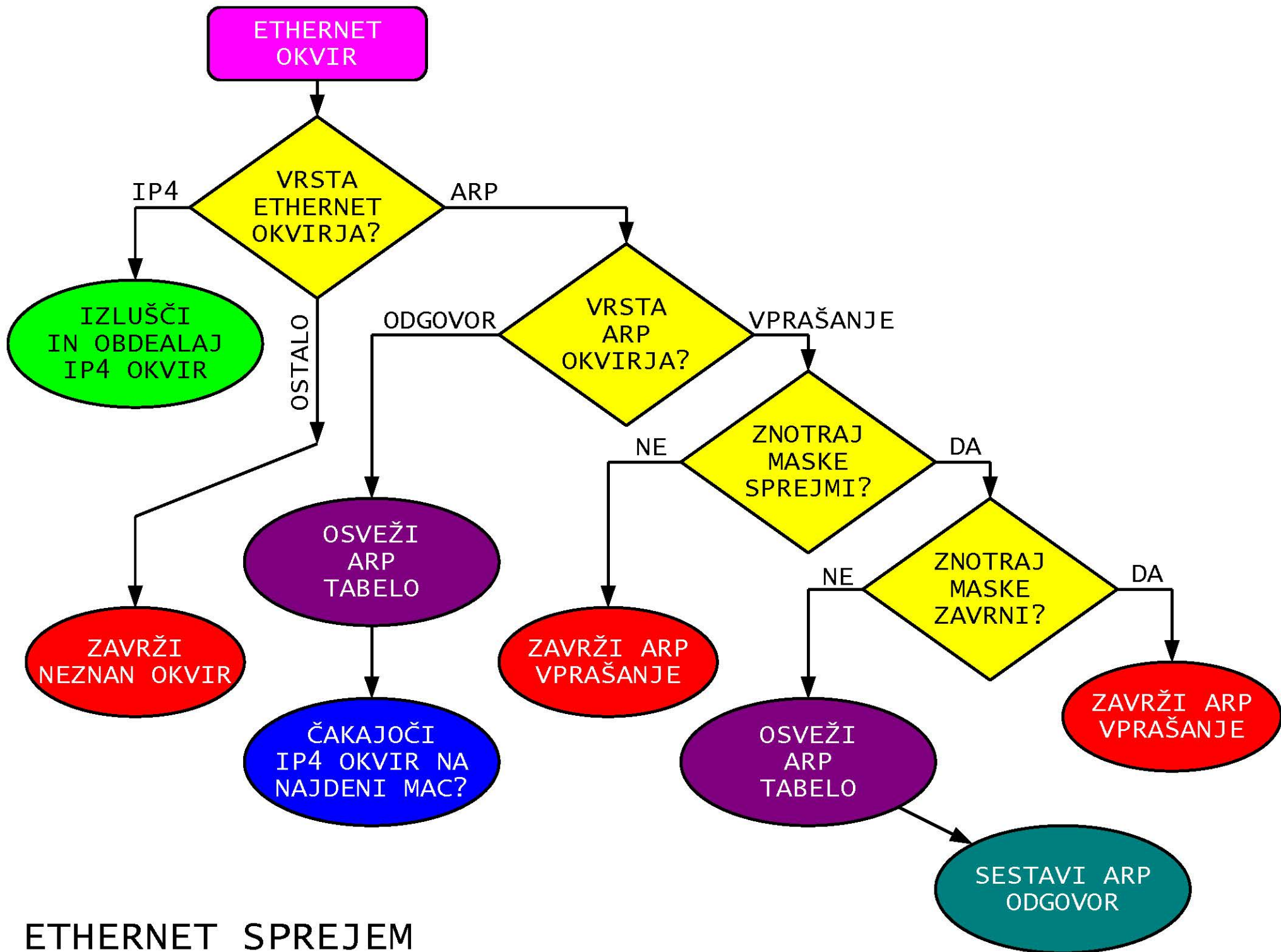
UOKVIRJANJE NBP



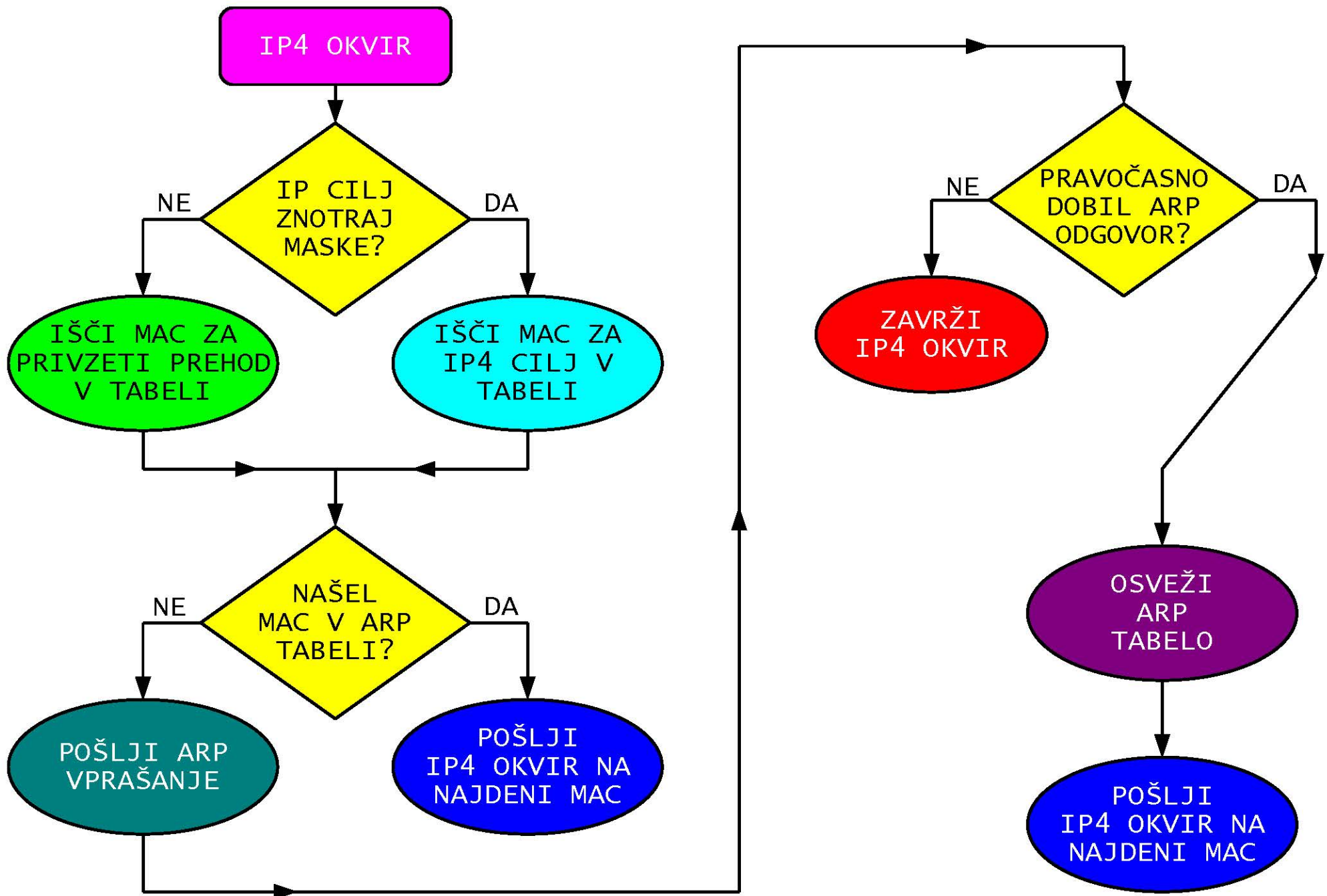
VNOS NBP POTI V TABELO



ETHERNET ODDAJA

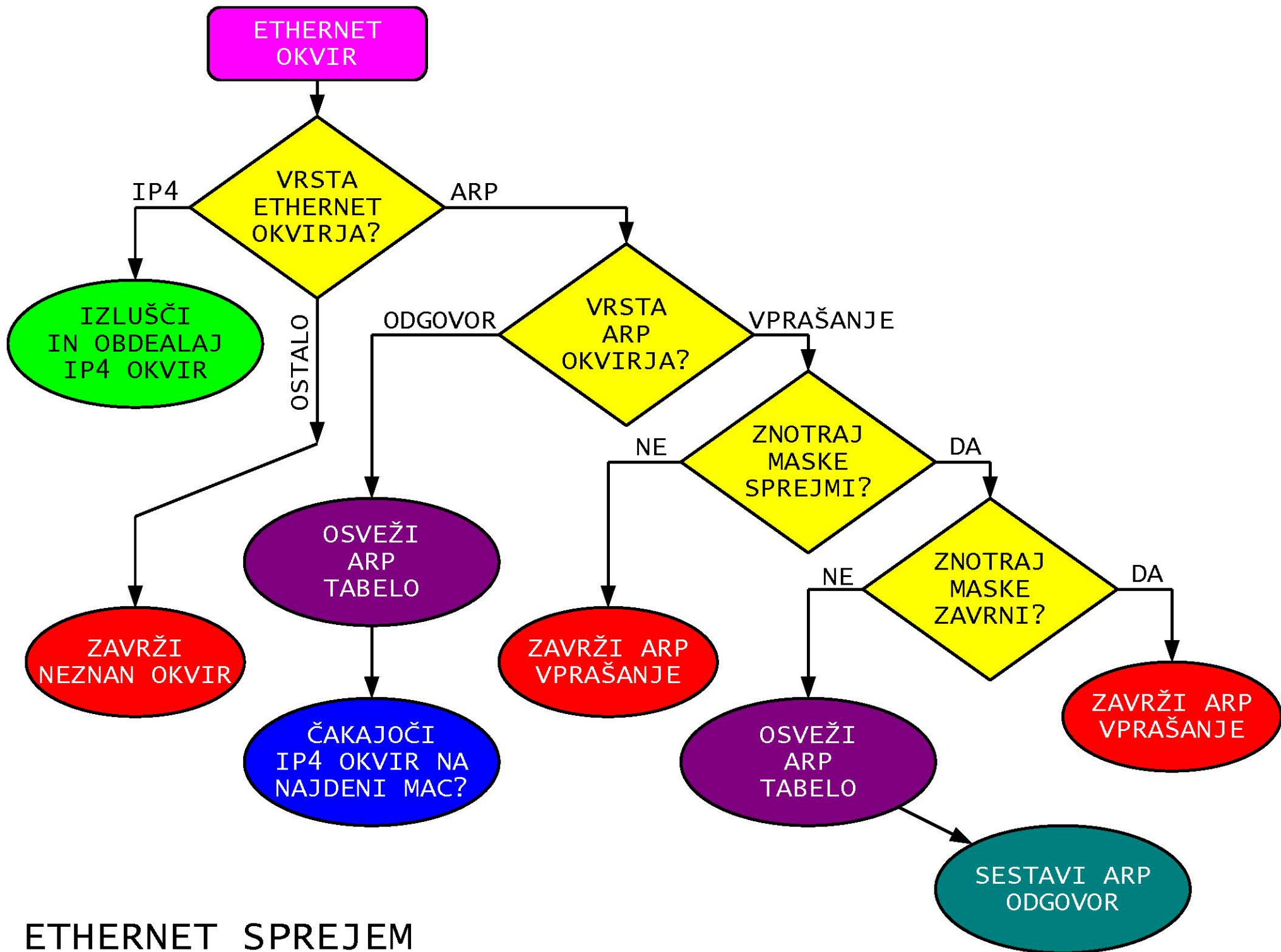


ETHERNET SPREJEM



ETHERNET ODDAJA

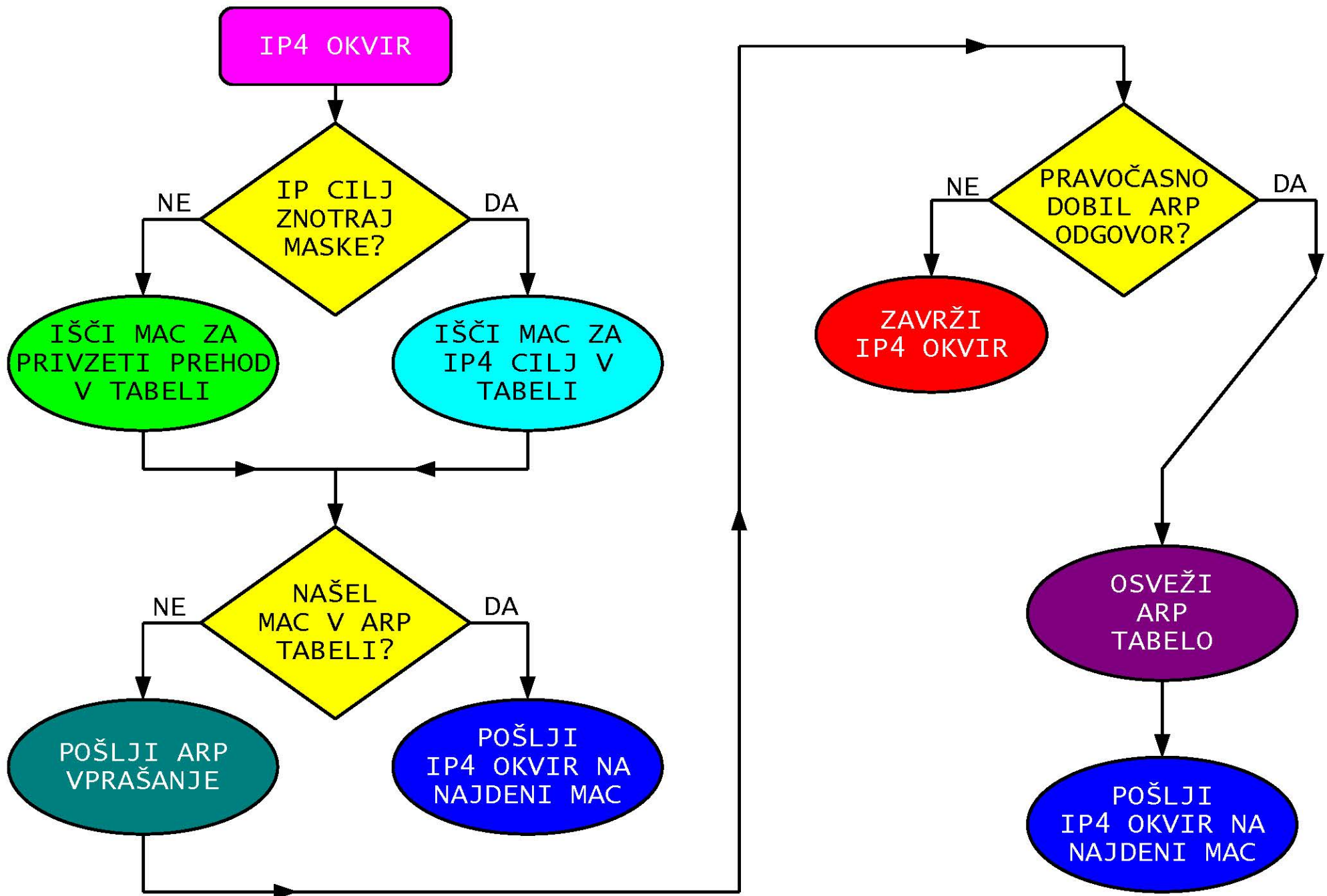




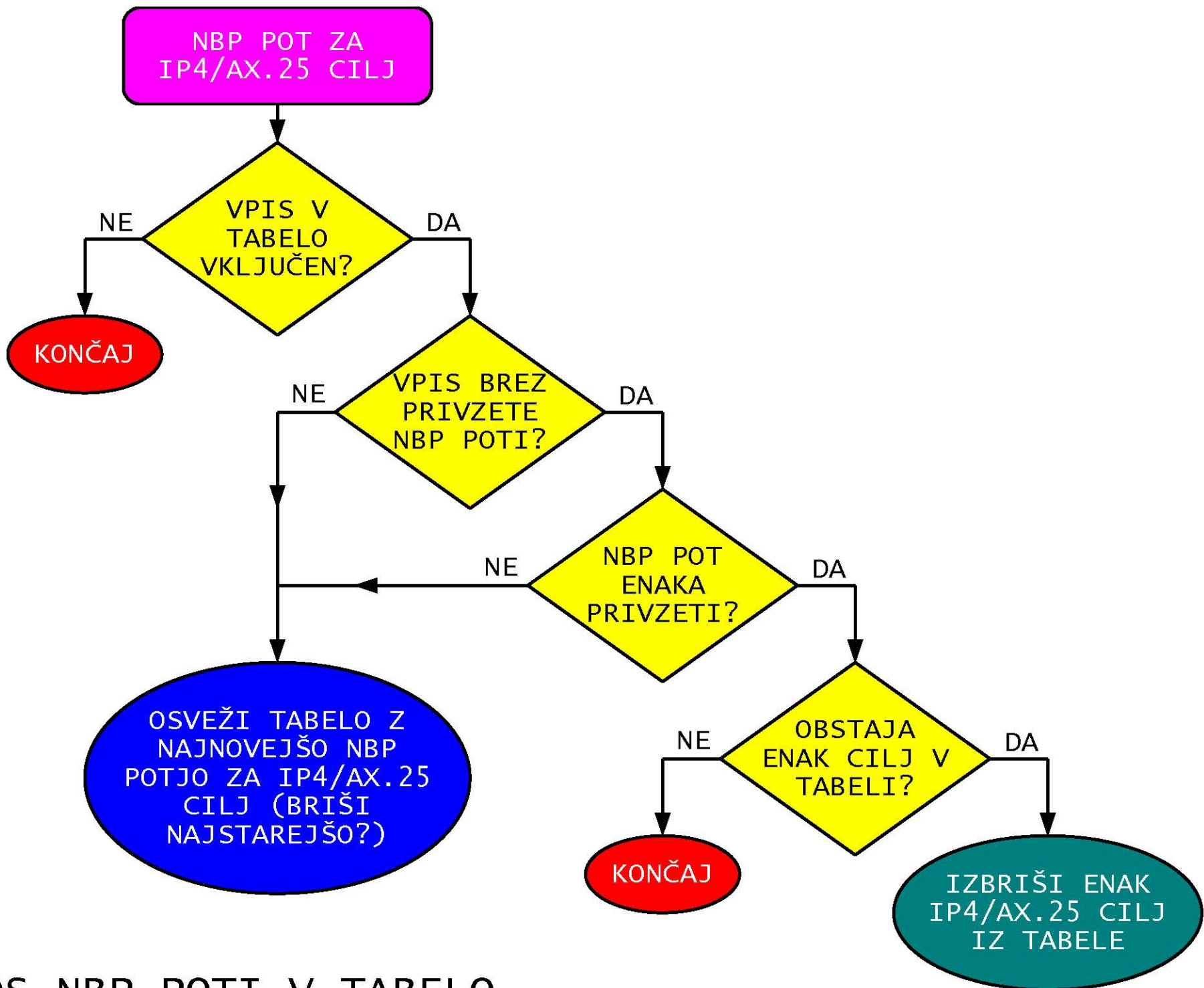
ETHERNET SPREJEM

UPORABNIK	win98 FlexNet	win98/XP SLIPTNC	WinXP EATNC	winXP/7 WLAN (Ubiquiti)
STREŽNIK	Linux+PROXY DMASCC	Linux+NAT SLIPTNC	WRT54+NAT EATNC	
PROTOKOL	AX.25 MTU=256	AX.25 MTU=1500	NBP	IEEE 802.11n
OMREŽJE	SuperVoze1j	SuperVoze1j	ASV	5.7GHz OFDM MIMO2x2 (Ubiquiti)
RADIJSKA POSTAJA	1.3GHz & 2.3GHz BPSK			
NAZIVNA HITROST	1.2288Mbps	1.2288Mbps	2Mbps	130Mbps
PASOVNA ŠIRINA	3MHZ	3MHZ	4MHZ	20MHZ
UPORABEN DOMET	100km			10km
EFEKTIVNI PRENOS	1kbyte/s	10kbyte/s	100kbyte/s	500kbyte/s
IZKORISTEK KANALA	0.65%	6.5%	40%	3.1%

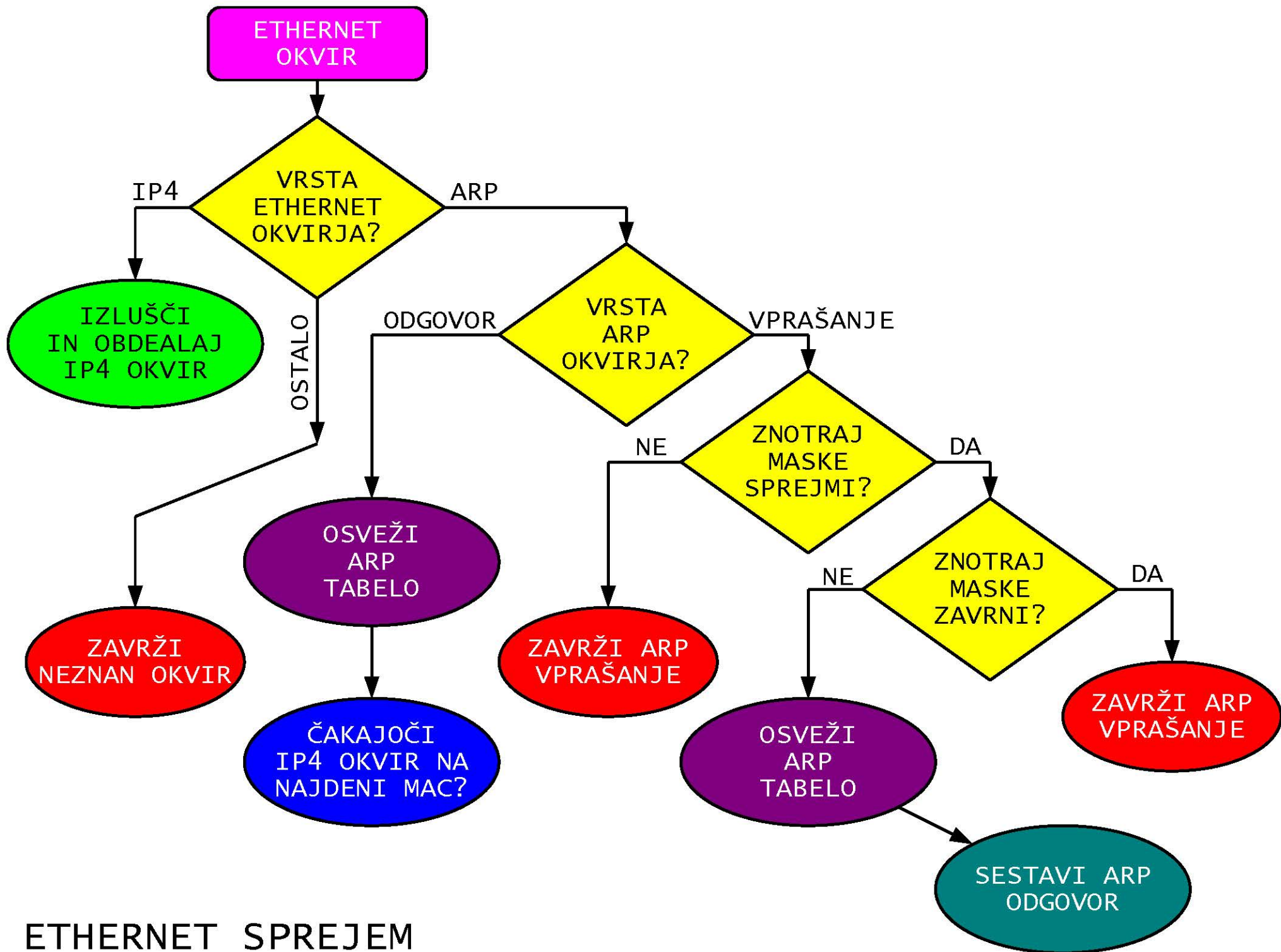
PRIMERJAVA RAZLIČNIH TEHNIK IP ZVEZ



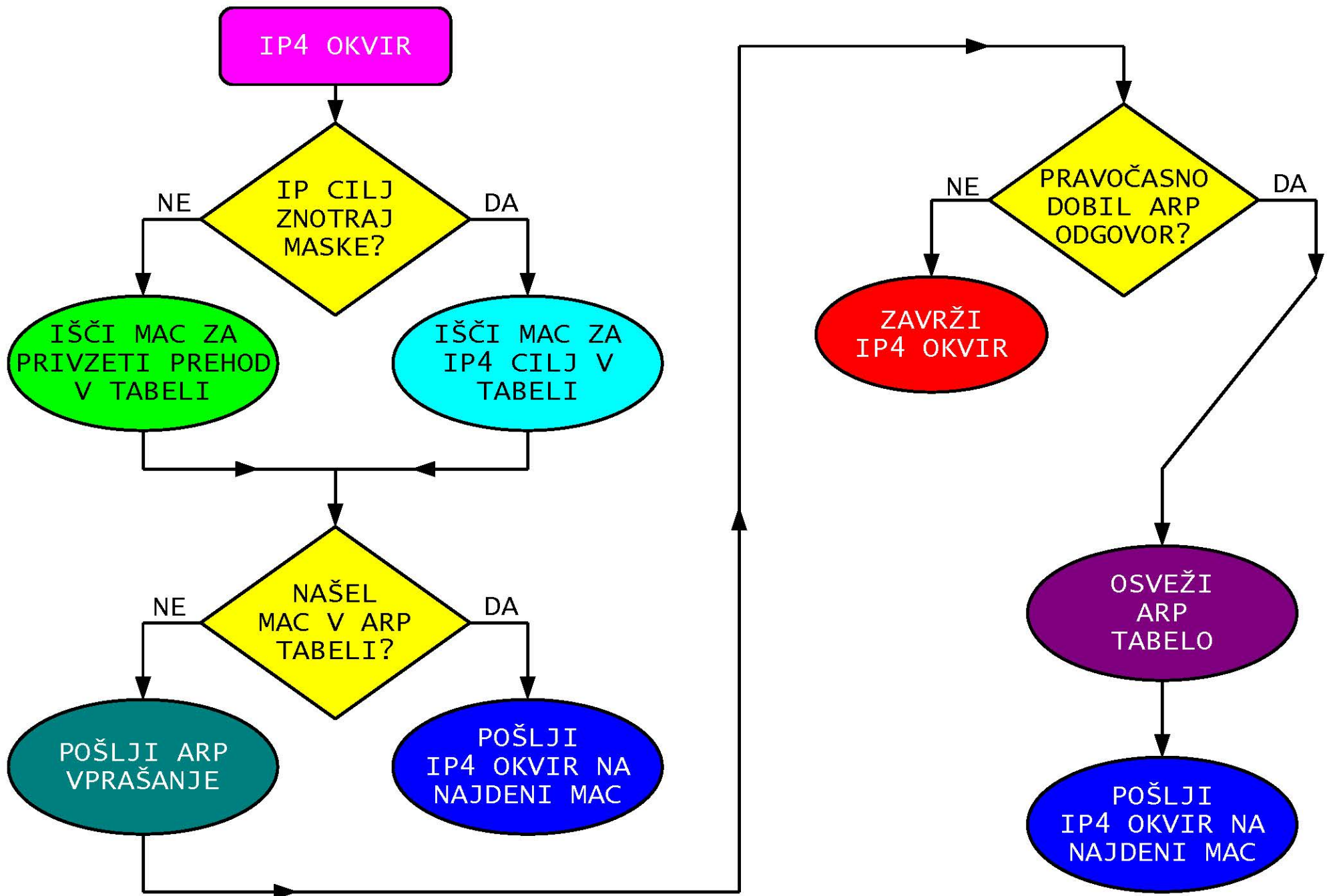
ETHERNET ODDAJA



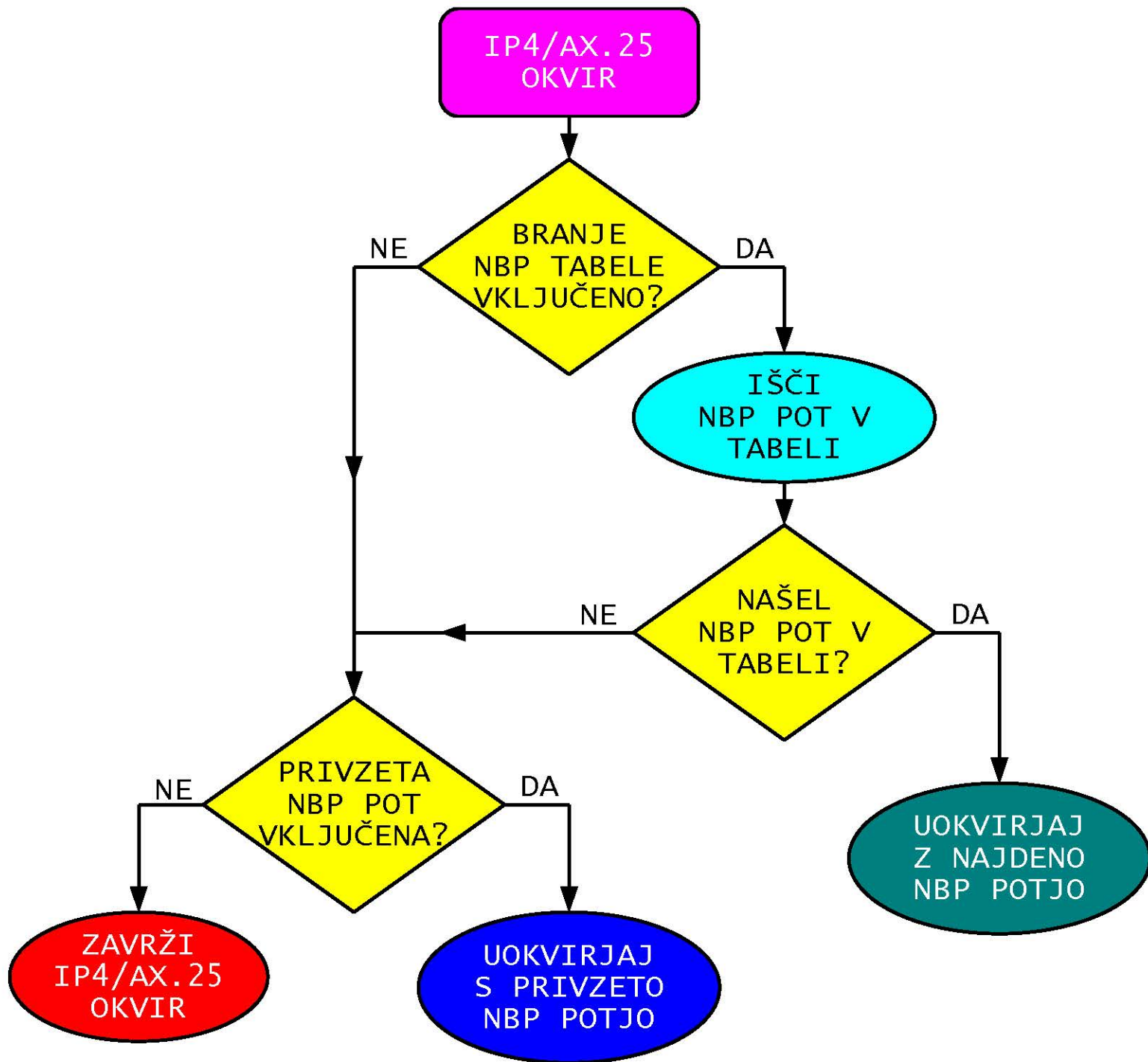
VNOS NBP POTI V TABELO



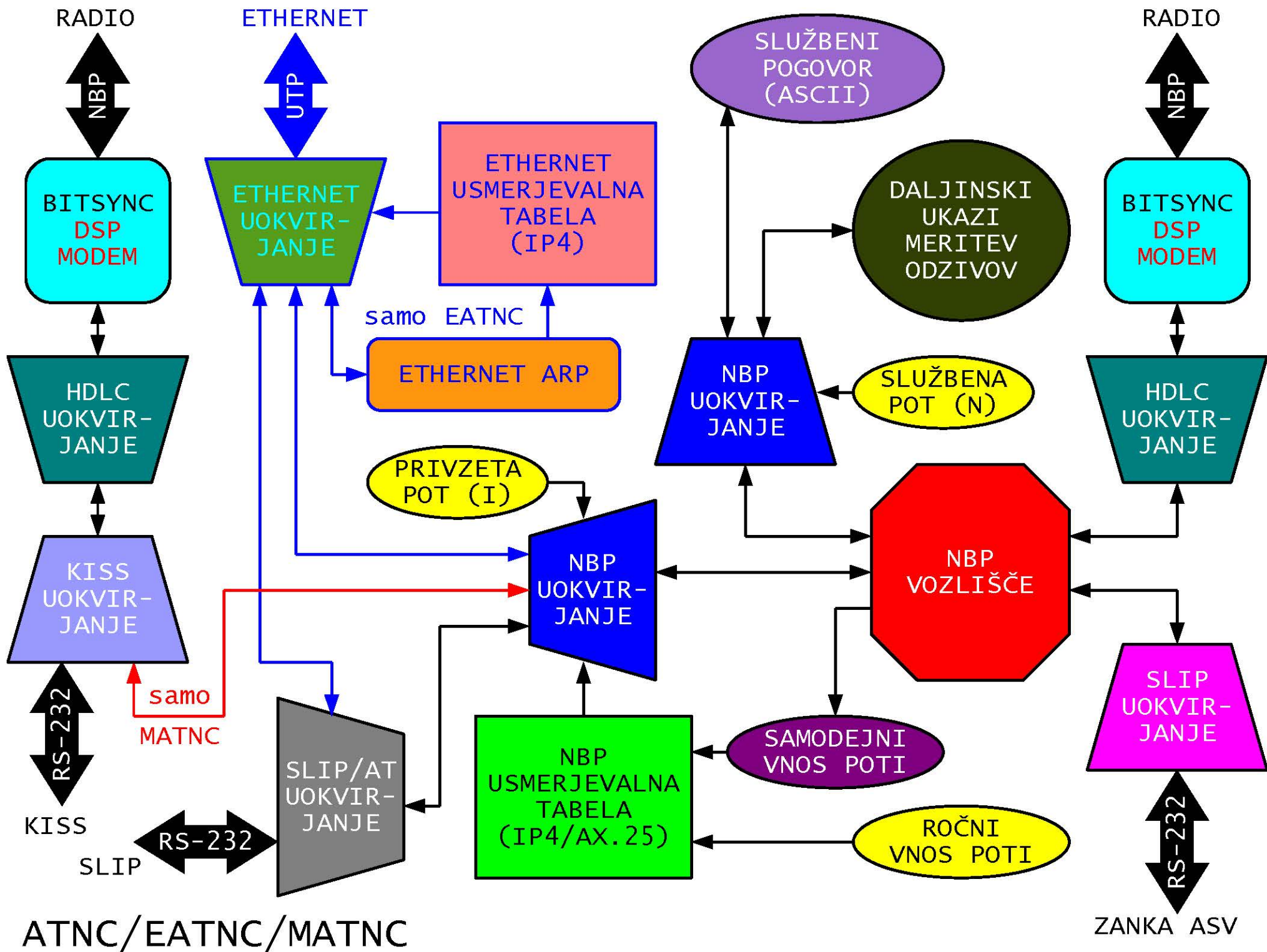
ETHERNET SPREJEM



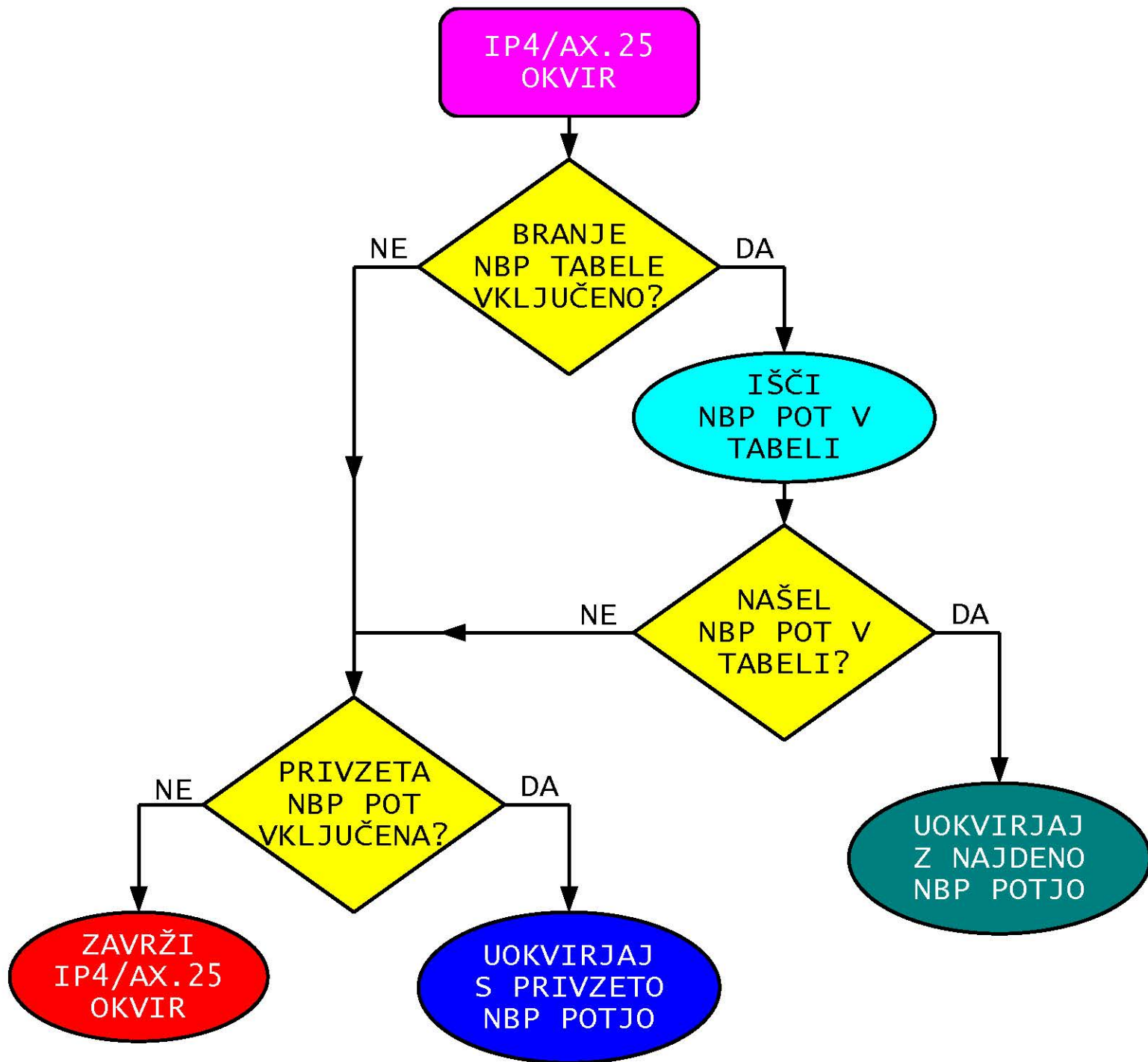
ETHERNET ODDAJA



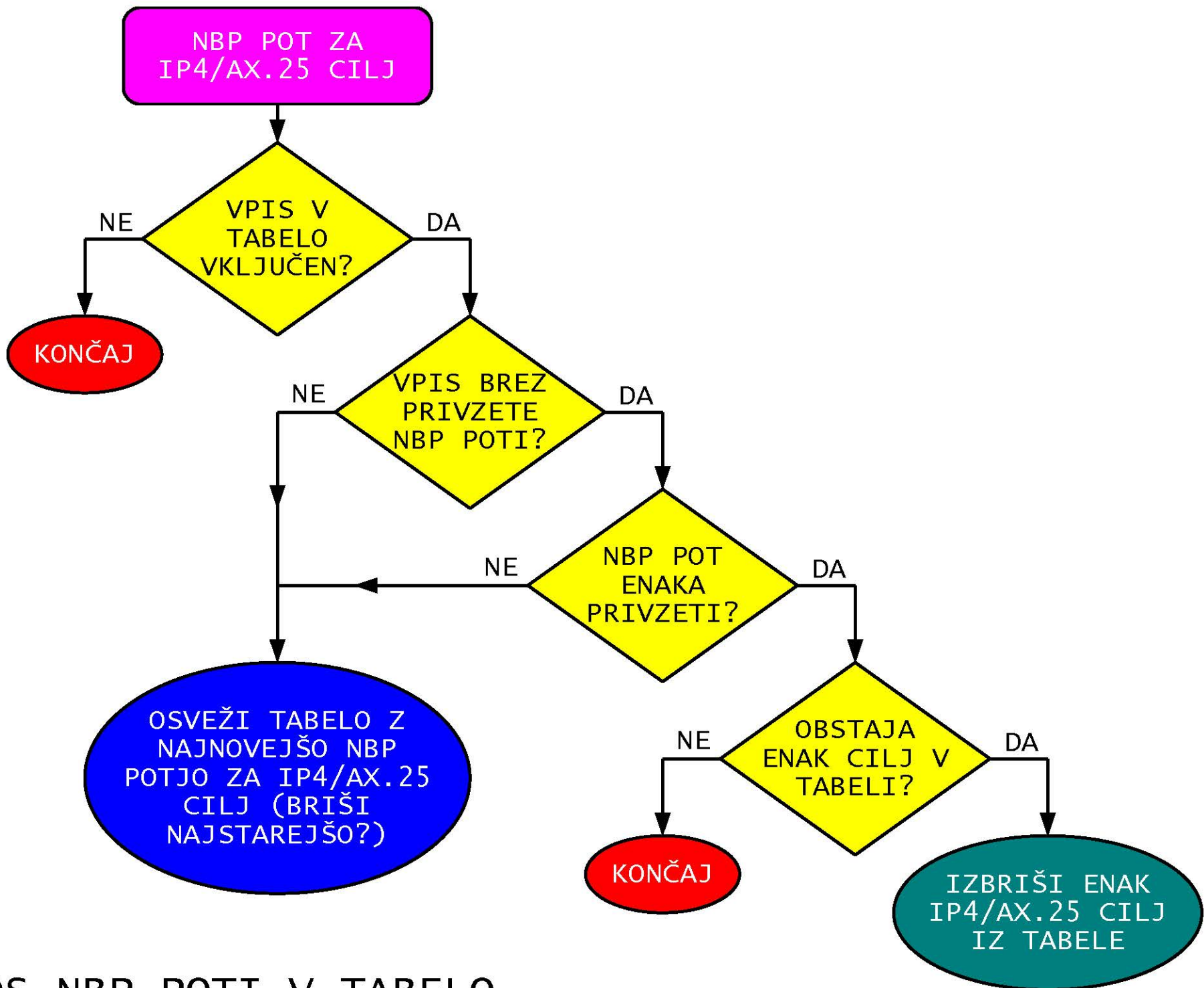
UOKVIRJANJE NBP



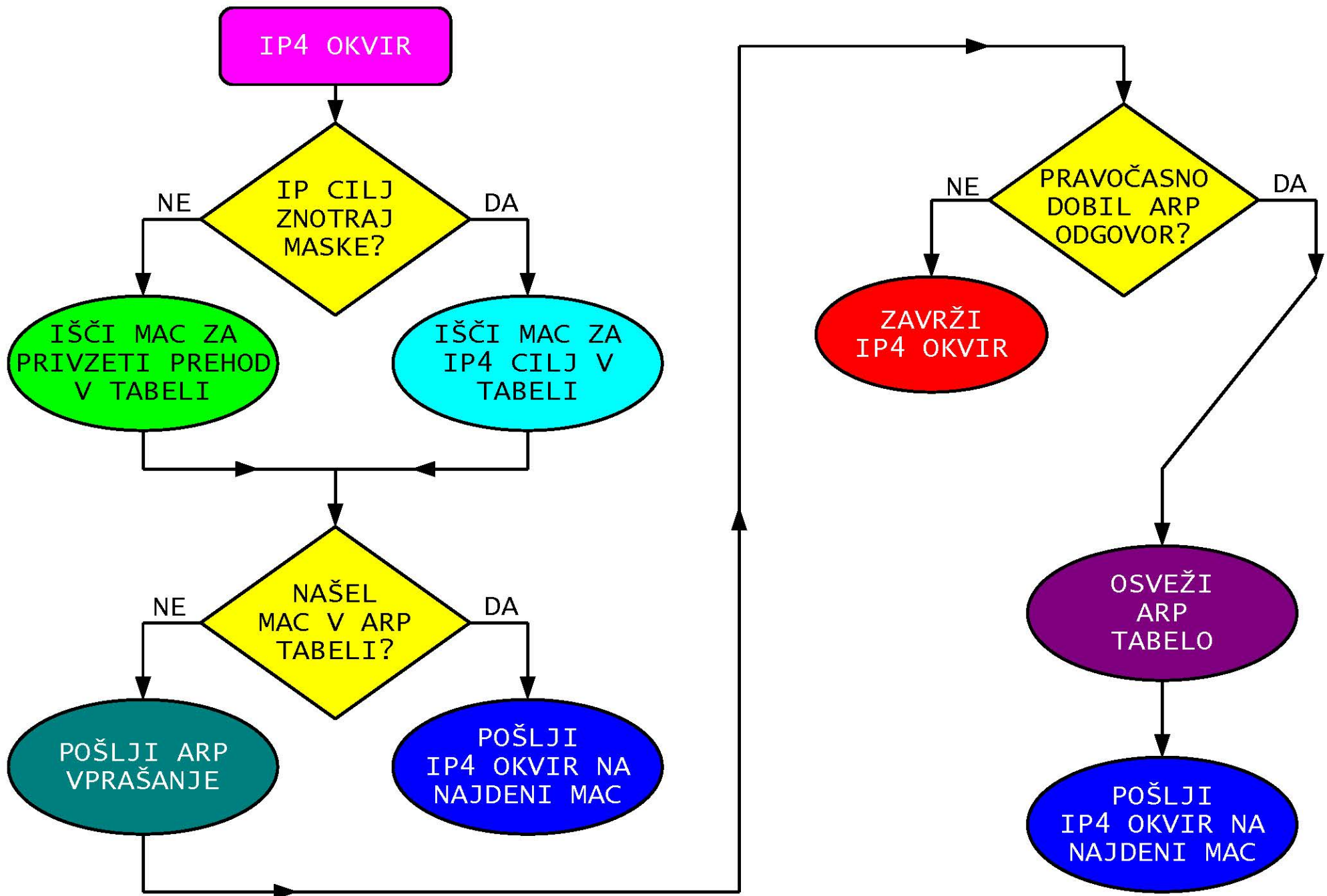




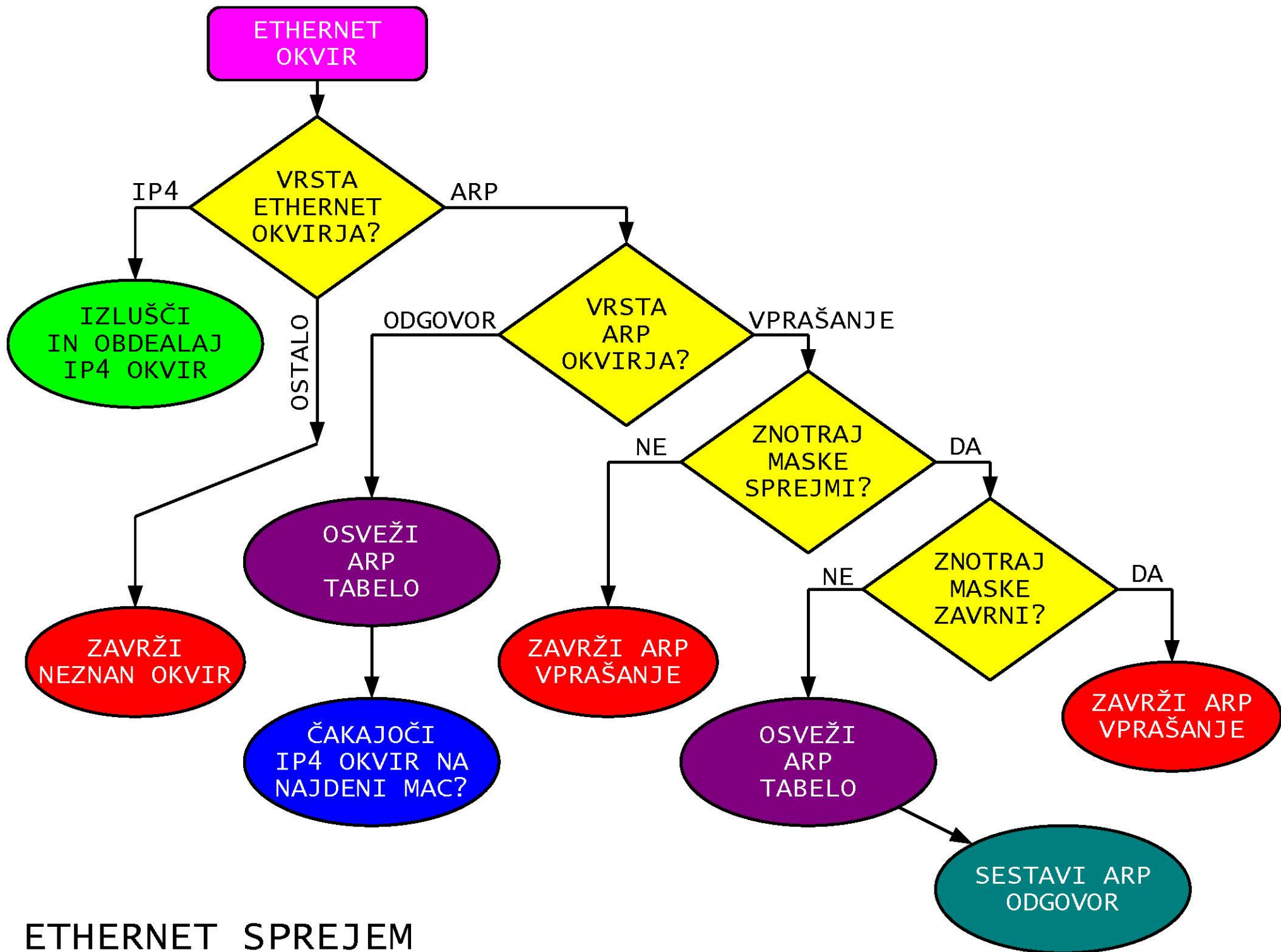
UOKVIRJANJE NBP



VNOS NBP POTI V TABELO



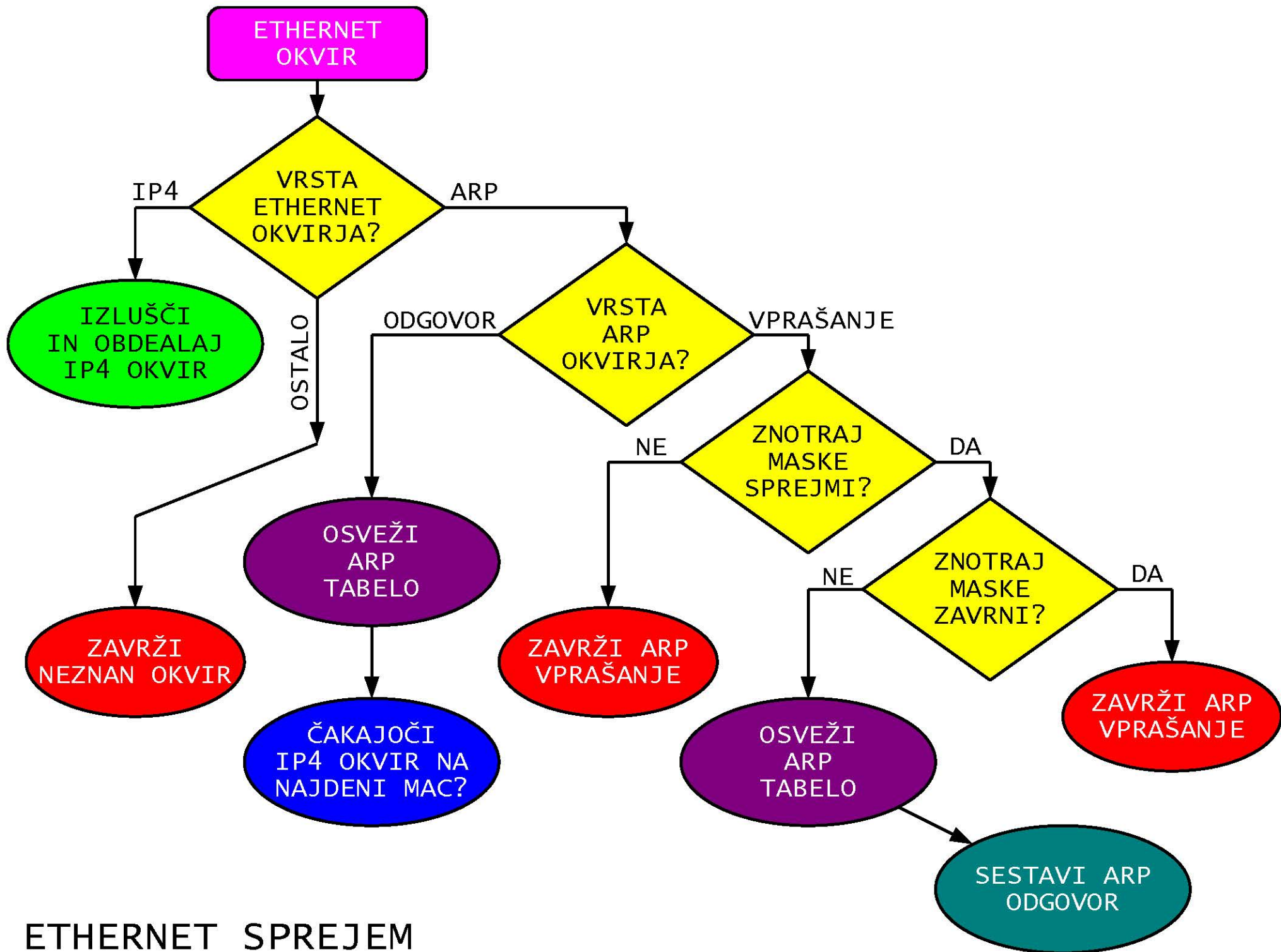
ETHERNET ODDAJA



ETHERNET SPREJEM

UPORABNIK	win98 FlexNet	win98/XP SLIPTNC	WinXP EATNC	winXP/7 WLAN (Ubiquiti)
STREŽNIK	Linux+PROXY DMASCC	Linux+NAT SLIPTNC	WRT54+NAT EATNC	
PROTOKOL	AX.25 MTU=256	AX.25 MTU=1500	NBP	IEEE 802.11n
OMREŽJE	SuperVoze1j	SuperVoze1j	ASV	5.7GHz OFDM MIMO2x2 (Ubiquiti)
RADIJSKA POSTAJA	1.3GHz & 2.3GHz BPSK			
NAZIVNA HITROST	1.2288Mbps	1.2288Mbps	2Mbps	130Mbps
PASOVNA ŠIRINA	3MHZ	3MHZ	4MHZ	20MHZ
UPORABEN DOMET	100km			10km
EFEKTIVNI PRENOS	1kbyte/s	10kbyte/s	100kbyte/s	500kbyte/s
IZKORISTEK KANALA	0.65%	6.5%	40%	3.1%

PRIMERJAVA RAZLIČNIH TEHNIK IP ZVEZ



ETHERNET SPREJEM