

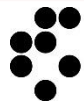


Calculation of results for Po-210 in water by alpha spectrometry

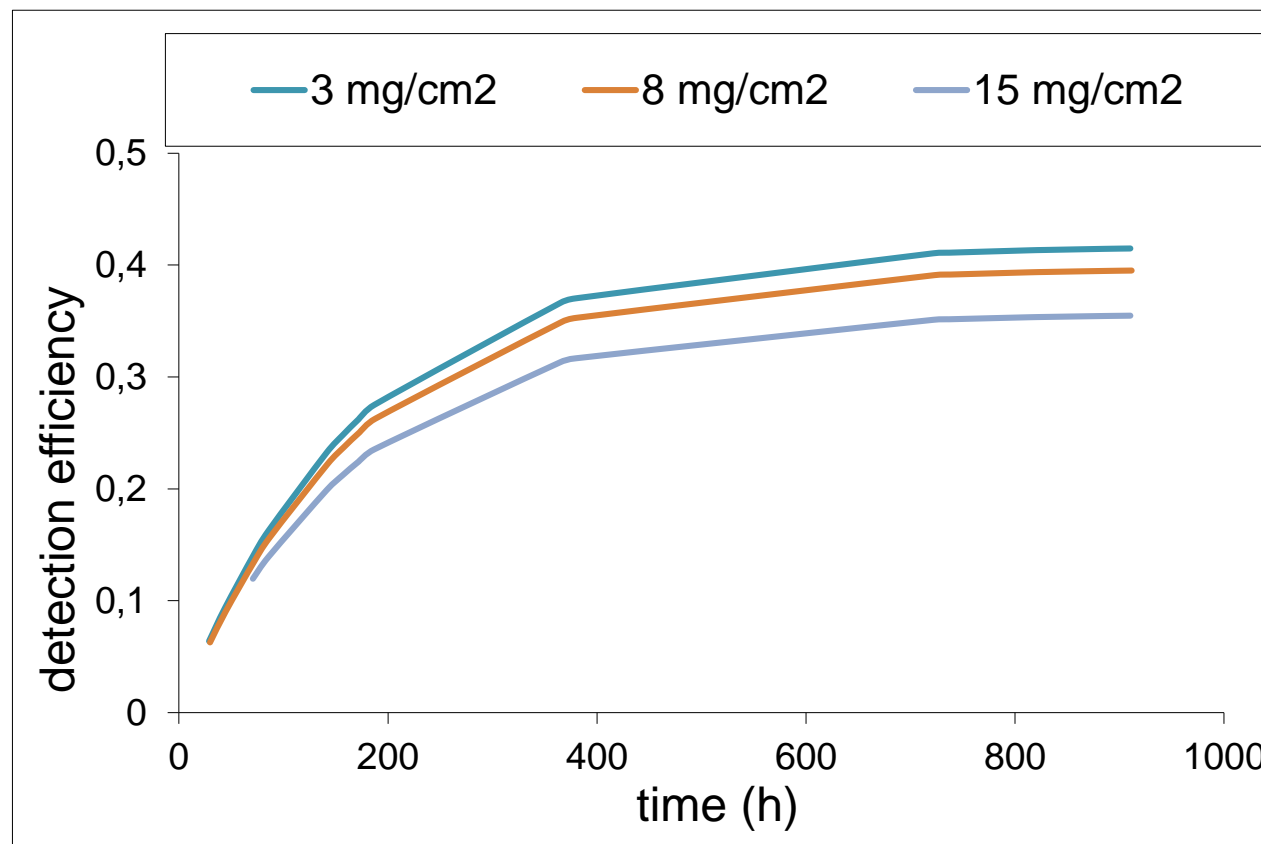
Marko Štrok
Jožef Stefan Institute



This project has received funding from the European Union's Horizon 2020 research and innovation programme under the Euratom research and training programme 2014-2018 under grant agreement No 754 972



Bi-210 in-growth from Pb-210 at different sample thickness



Calculation of results

$$A_{\text{Pb-210}} = \frac{(R_{\text{beta}} - R_{\text{b,beta}})}{\eta_{\text{Pb-210}} \varepsilon_{\text{Pb-210}} V_s} \quad (1)$$

$$R_X = \frac{N_X}{t_m} \quad (2)$$

$$\eta_{\text{Pb-210}} = \frac{m_{\text{PbSO}_4} M_{\text{Pb}}}{m_{\text{Pb}} M_{\text{PbSO}_4}} \quad (3)$$

$A_{\text{Pb-210}}$ → activity concentration of Pb – 210 [Bq/L]

R_{beta} → beta count rate [1/s]

$R_{\text{b,beta}}$ → beta background count rate [1/s]

$\eta_{\text{Pb-210}}$ → Pb – 210 chemical recovery

$\varepsilon_{\text{Pb-210}}$ → Pb – 210 detection efficiency

V_s → sample volume [L]

R_X → count rate of radionuclide X or background [1/s]

N_X → number of counts of radionuclide X or background

t_m → measurement time [s]

m_{PbSO_4} → mass of PbSO_4 on planchet after separation [g]

M_{PbSO_4} → molar mass of PbSO_4 [g/mol]

m_{Pb} → mass of added Pb carrier before separation [g]

M_{Pb} → molar mass of Pb [g/mol]

Calculation of measurement uncertainty

$$u_{c,Pb-210} = A_{Pb-210} \sqrt{\left(\frac{u_{R_{beta-R_{b,beta}}}}{R_{beta} - R_{b,beta}}\right)^2 + \left(\frac{u_{\eta_{Pb-210}}}{\eta_{Pb-210}}\right)^2 + \left(\frac{u_{\epsilon_{Pb-210}}}{\epsilon_{Pb-210}}\right)^2 + \left(\frac{u_{V_s}}{V_s}\right)^2} \quad (4)$$

$$u_{R_{beta-R_{b,beta}}} = \sqrt{(u_{R_{beta}})^2 + (u_{R_{b,beta}})^2} \quad (5)$$

$$u_{R_X} = \frac{1}{\sqrt{N_X}} \quad (6)$$

$u_{c,Pb-210}$ → combined standard uncertainty for Pb – 210[Bq/L]

u_X → standard uncertainty of X

Reporting of the results

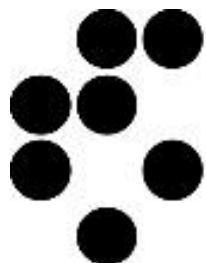
$$U_{\text{Pb-210}} = k u_{\text{c,Pb-210}} \quad (7)$$

$U_{\text{Pb-210}}$ → expanded uncertainty for Pb – 210 activity concentration [Bq/L]

k → coverage factor ($k = 2$ for 95% coverage)

$$A_{\text{Pb-210}} = A_{\text{Pb-210}} \pm U_{\text{Pb-210}}$$

meet cinch



Institut "Jožef Stefan", Ljubljana, Slovenija



This project has received funding from the European Union's Horizon 2020 research and innovation programme under the Euratom research and training programme 2014-2018 under grant agreement No 754 972

