

# Between Tradition & Hightech

Lecture University of Ljubljana, Faculty of architecture, 15.05.23

SEILERLINHART ARCHITEKTEN SIA BSA

# Location und Resources

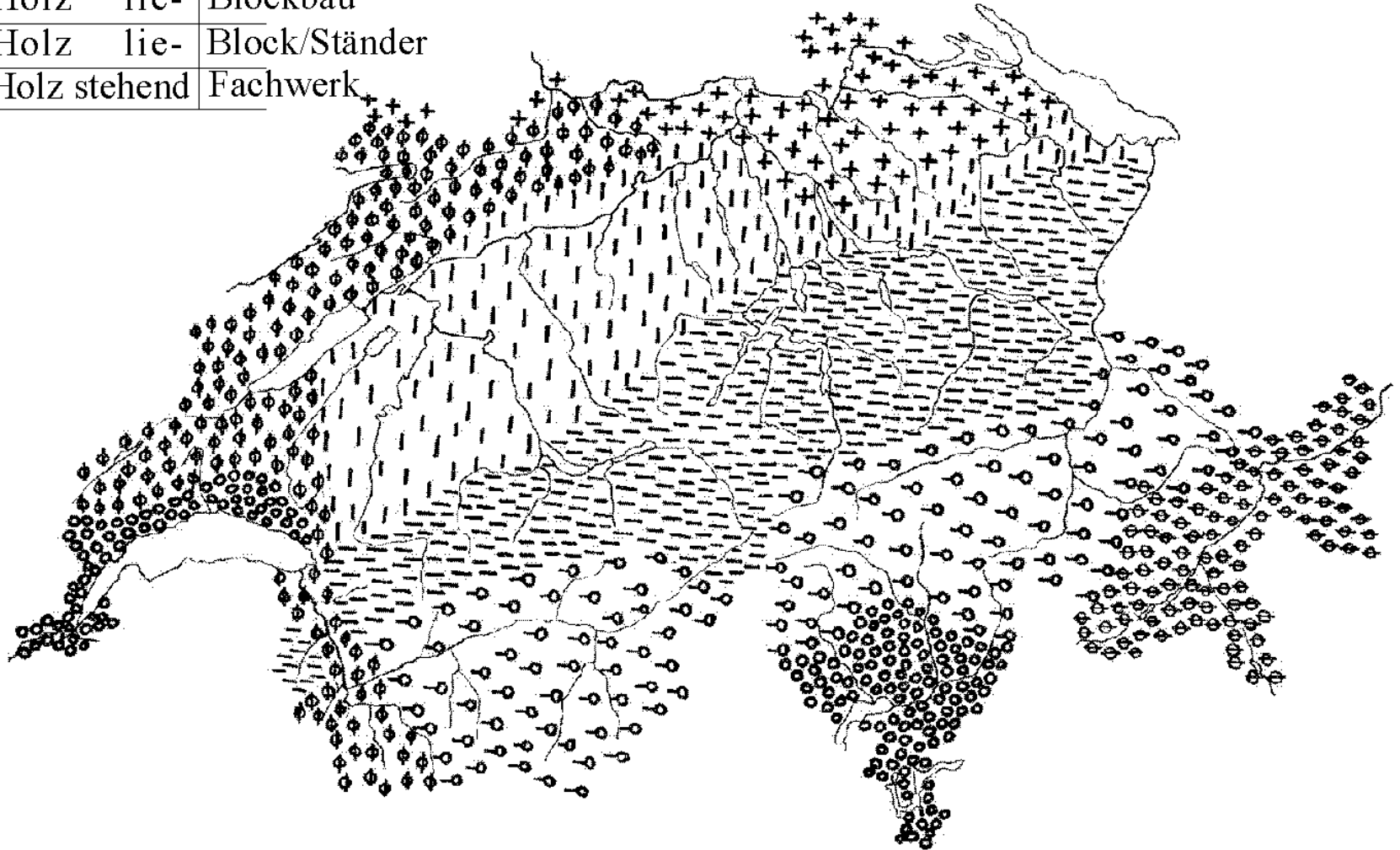


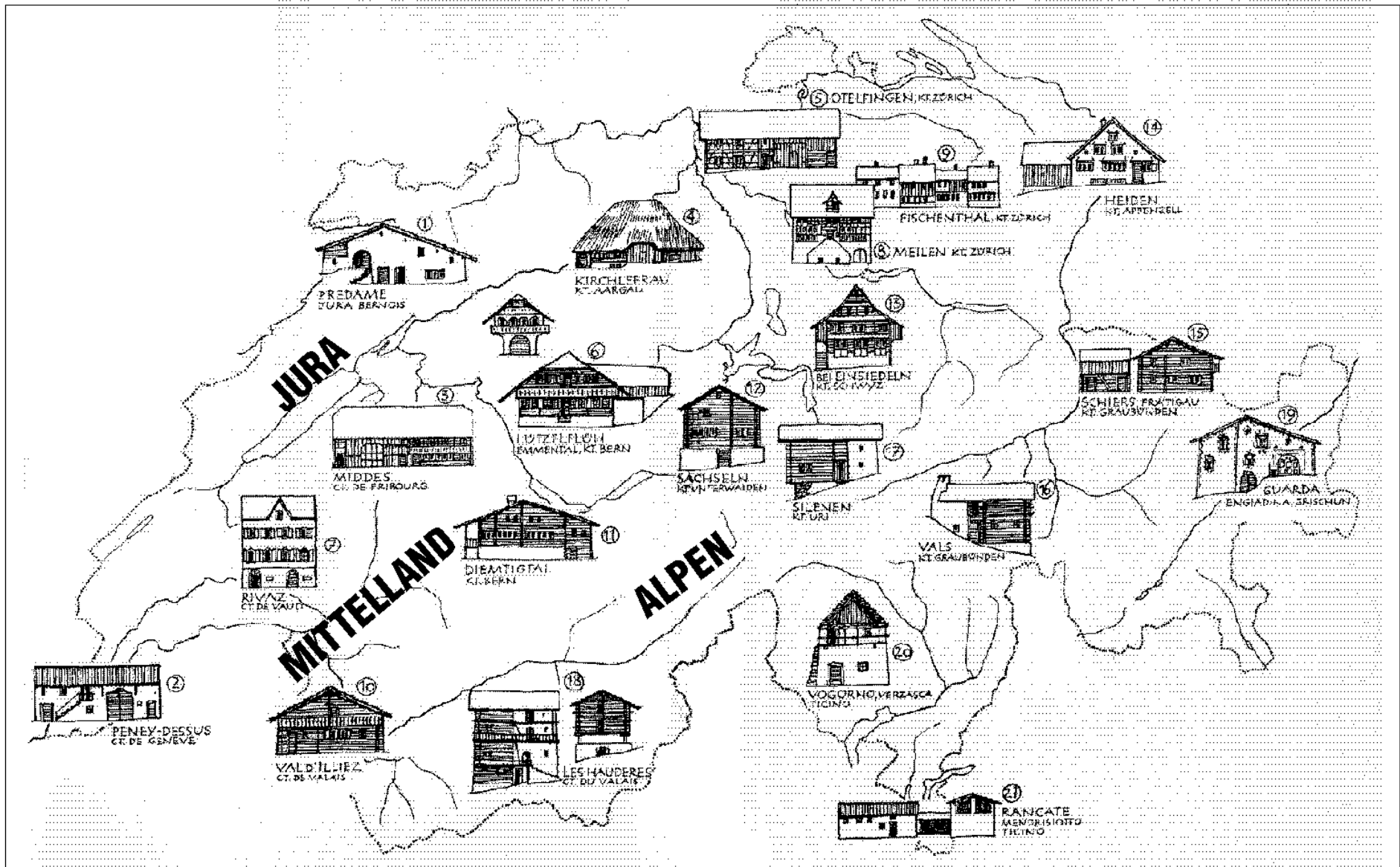






○	Stein	Mauer
⊖ ⊕	Stein/Holz	Mauer/Block
—	Holz lie-	Blockbau
—	Holz lie-	Block/Ständer
+	Holz stehend	Fachwerk



















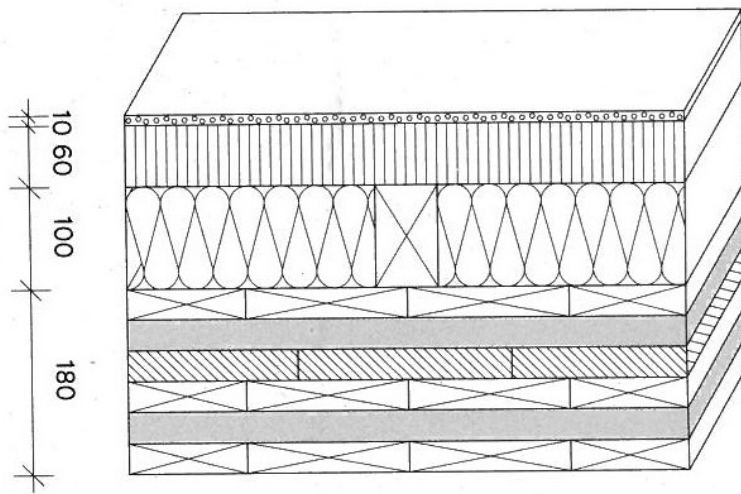
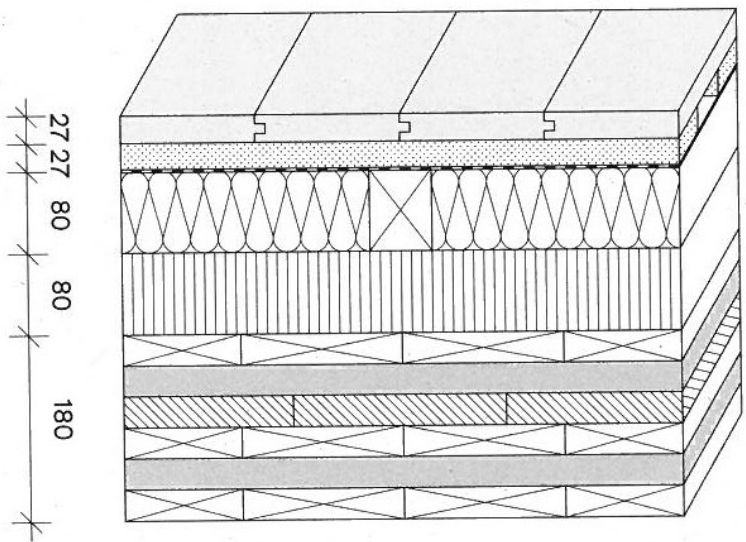
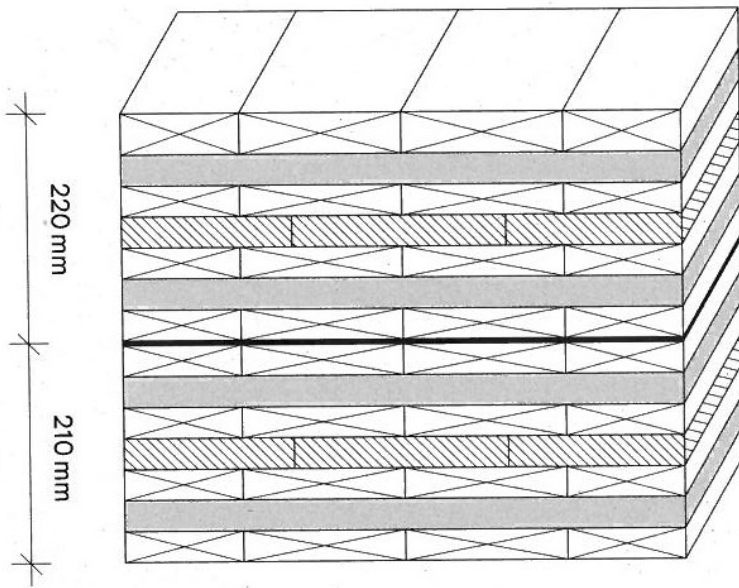
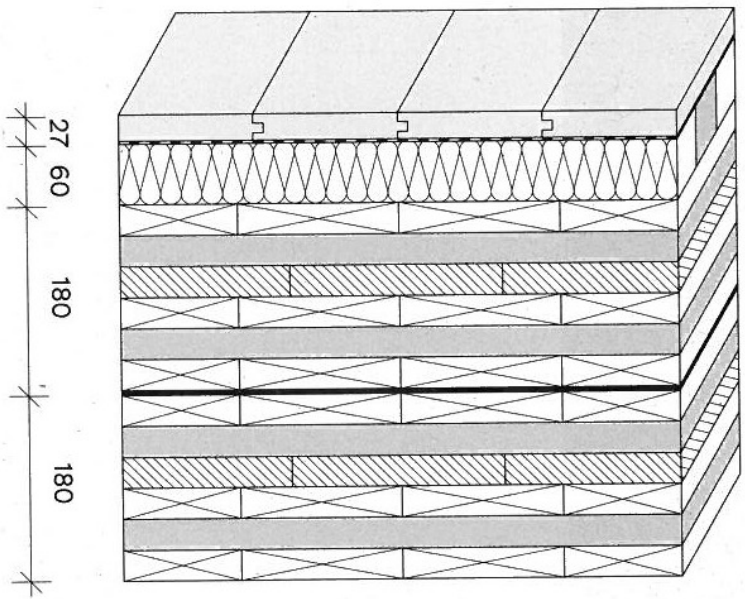






















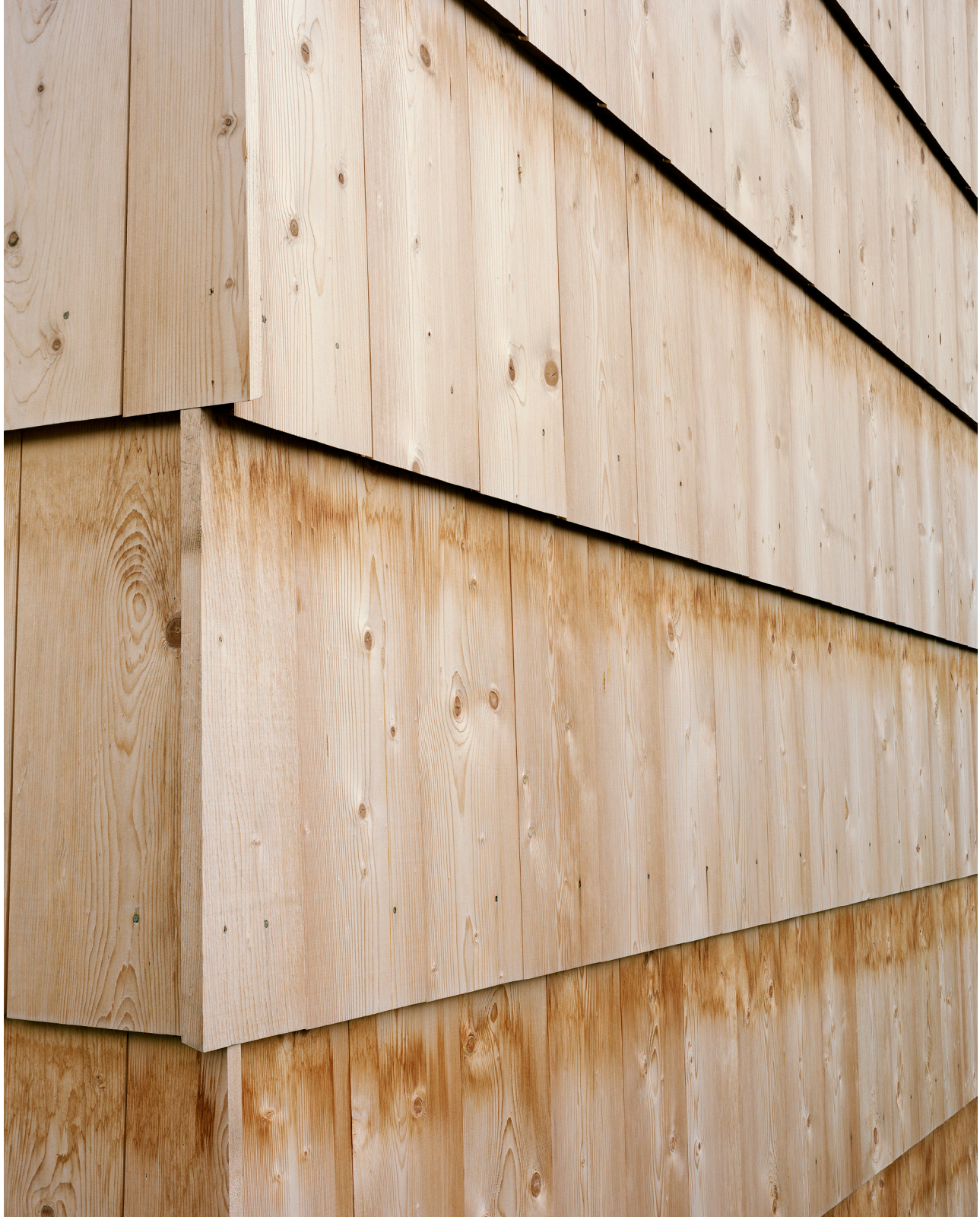


Fabr.Nr. 103481/1  
**5t**  
Baujahr 2012



Fabr.Nr. 103481/2  
**5t**  
Baujahr 2012



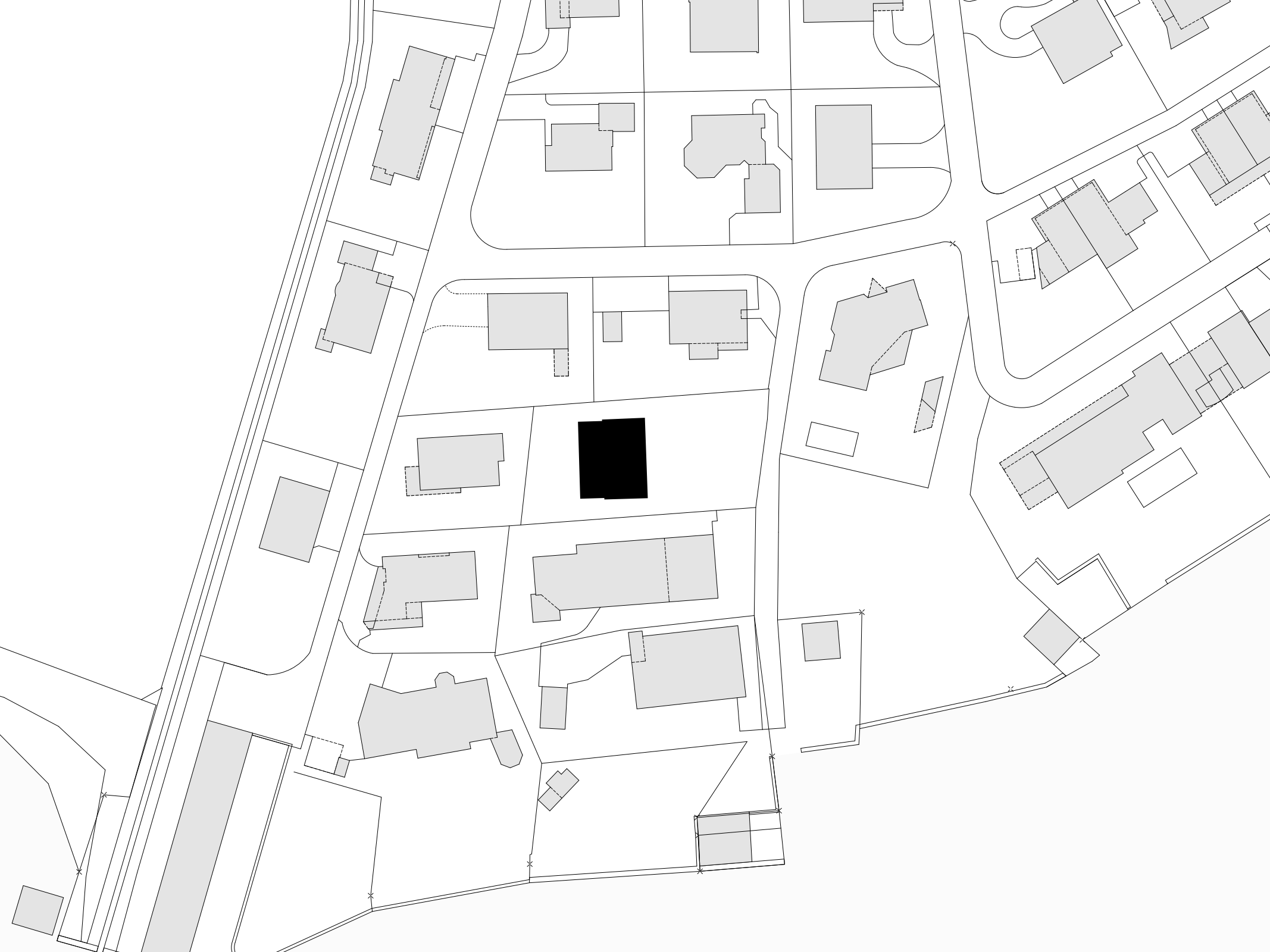


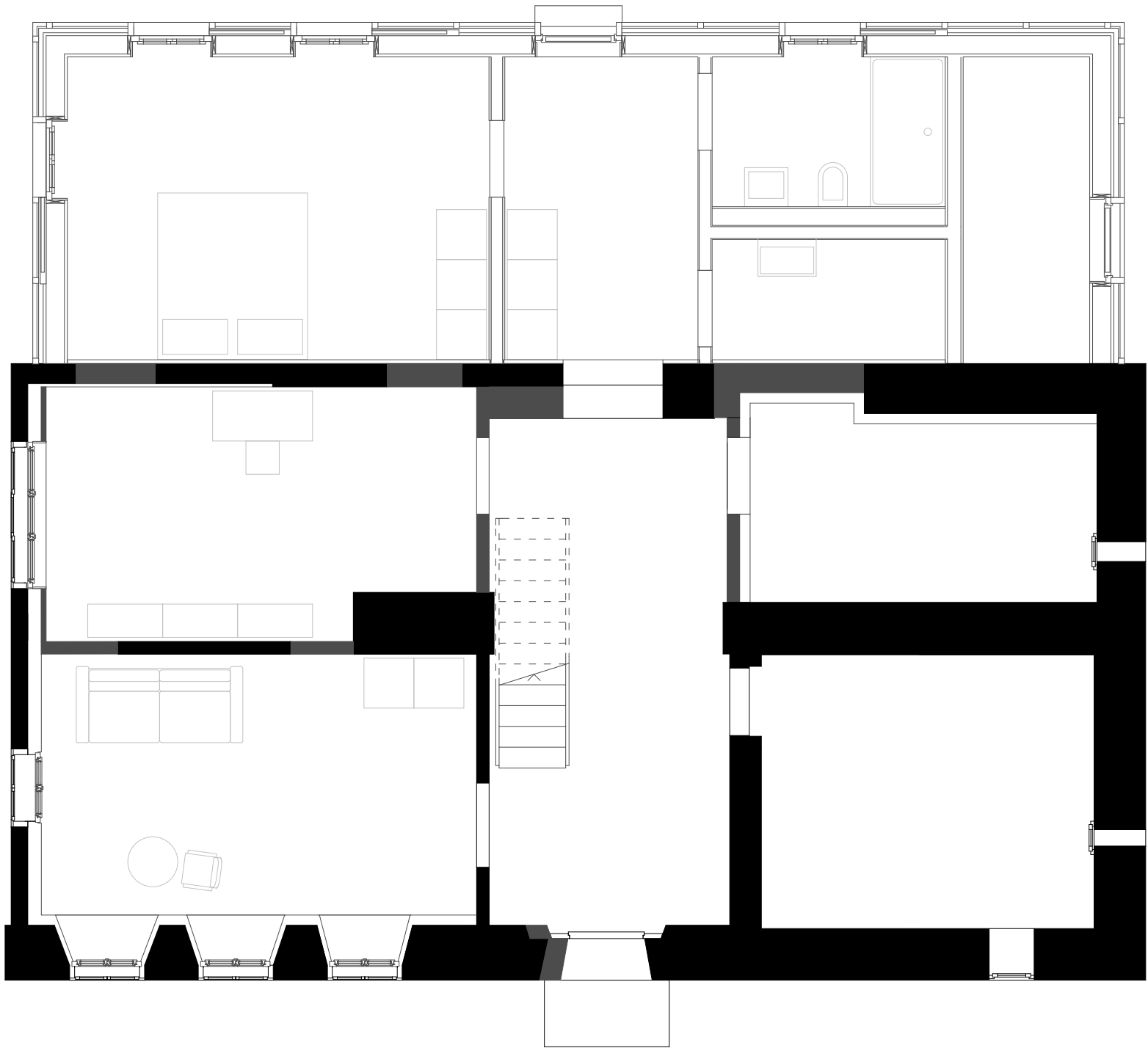
# House Hunkeler Sarnen, 2015-18

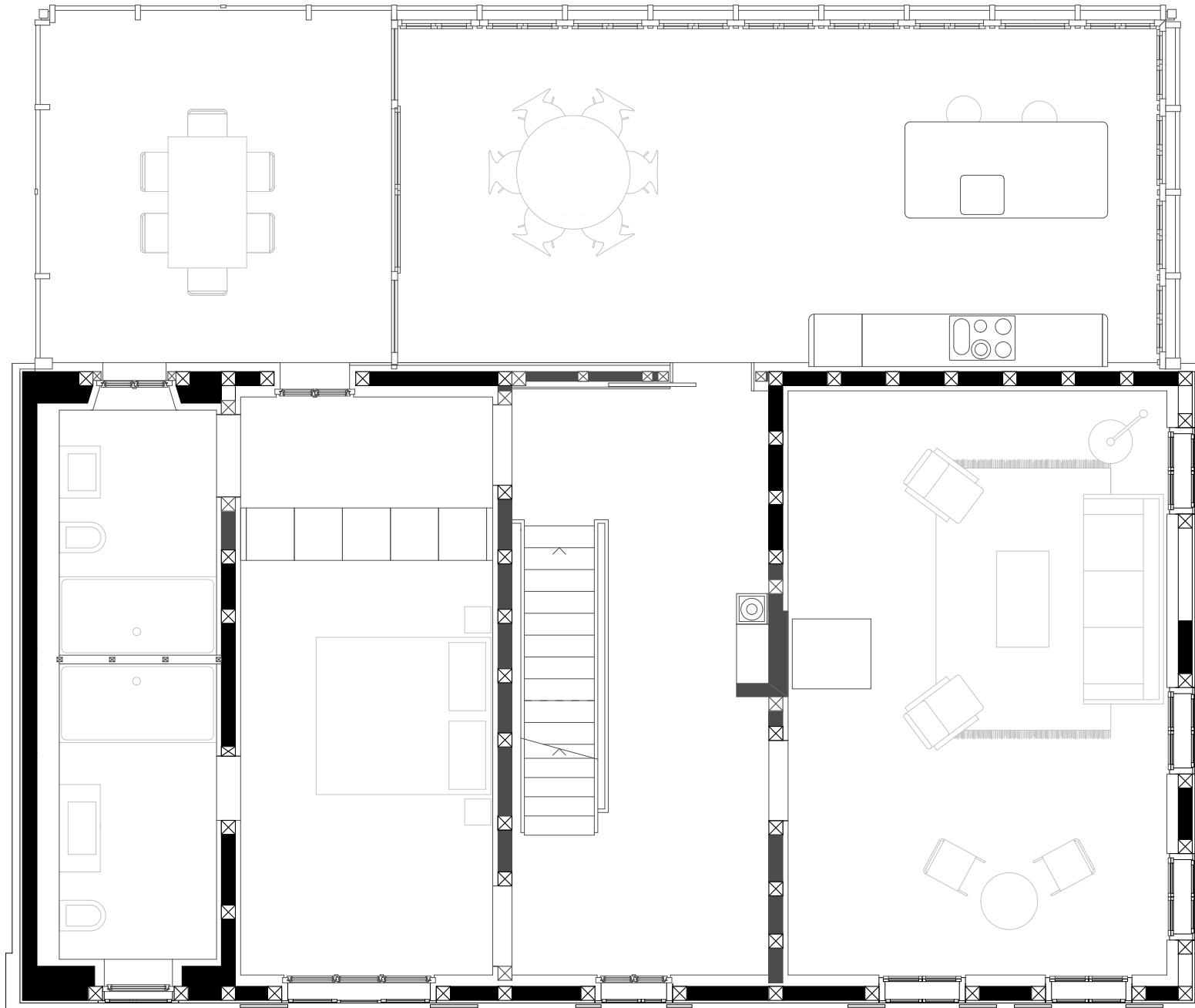


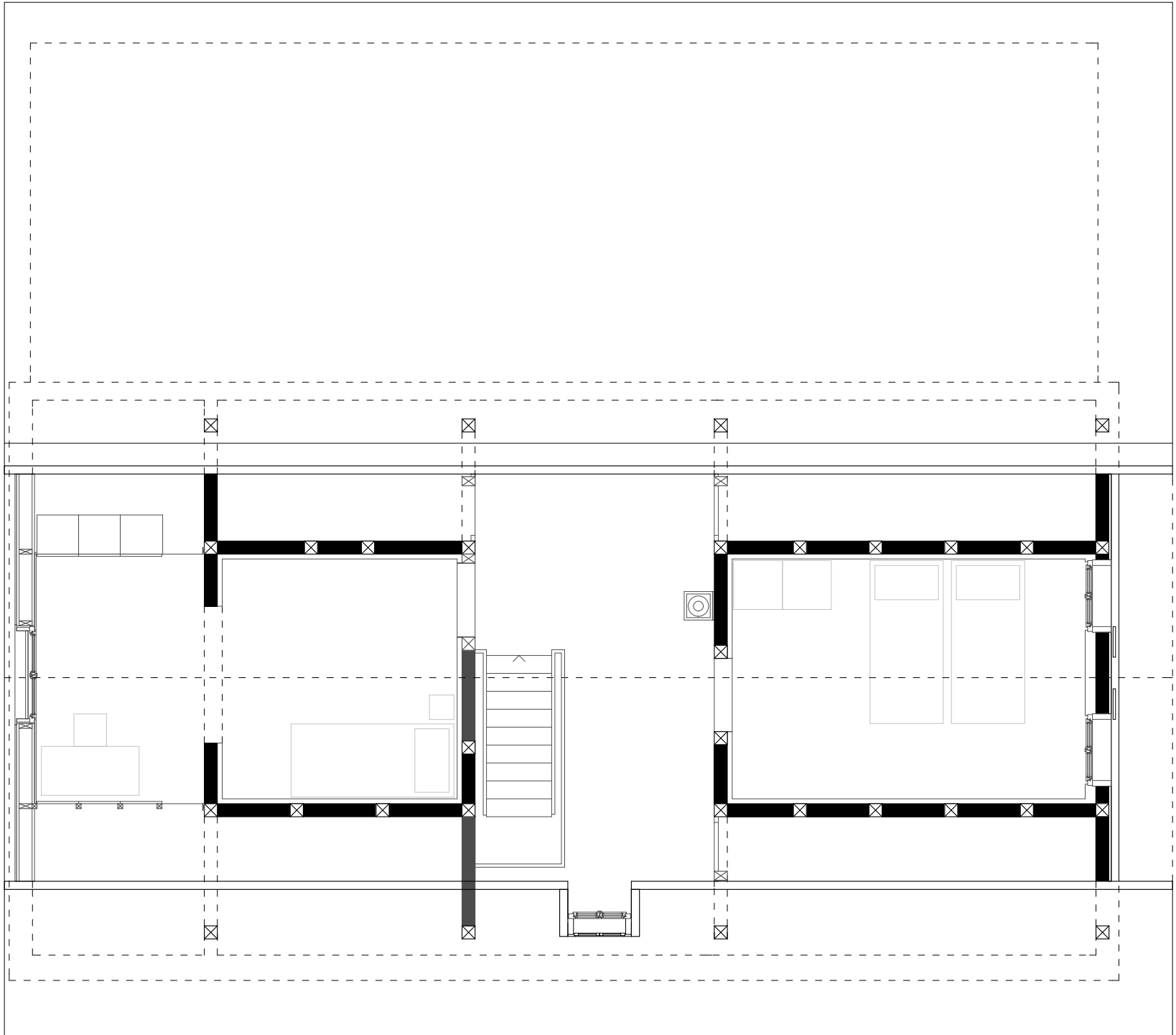


















































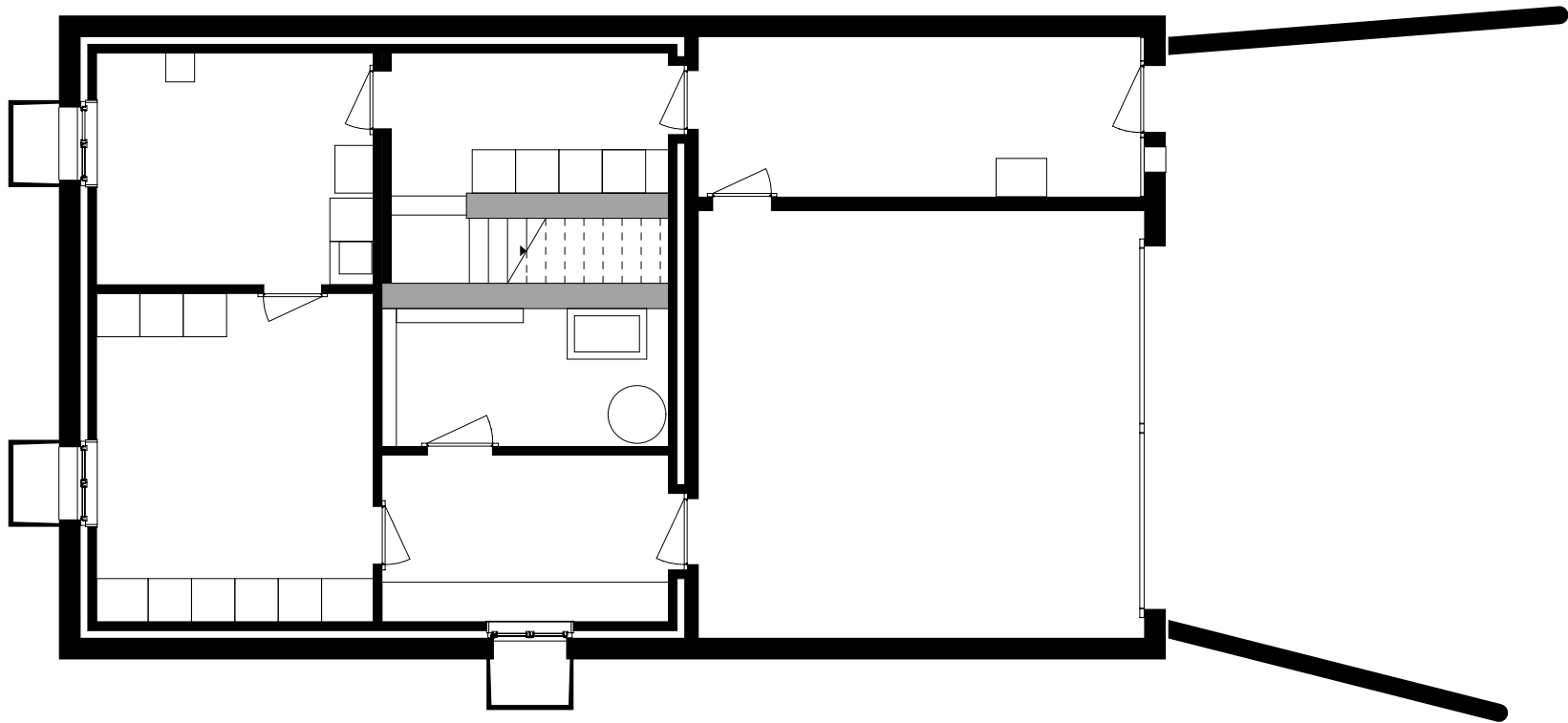
The Moonhouse  
Alpnach, 2015-18

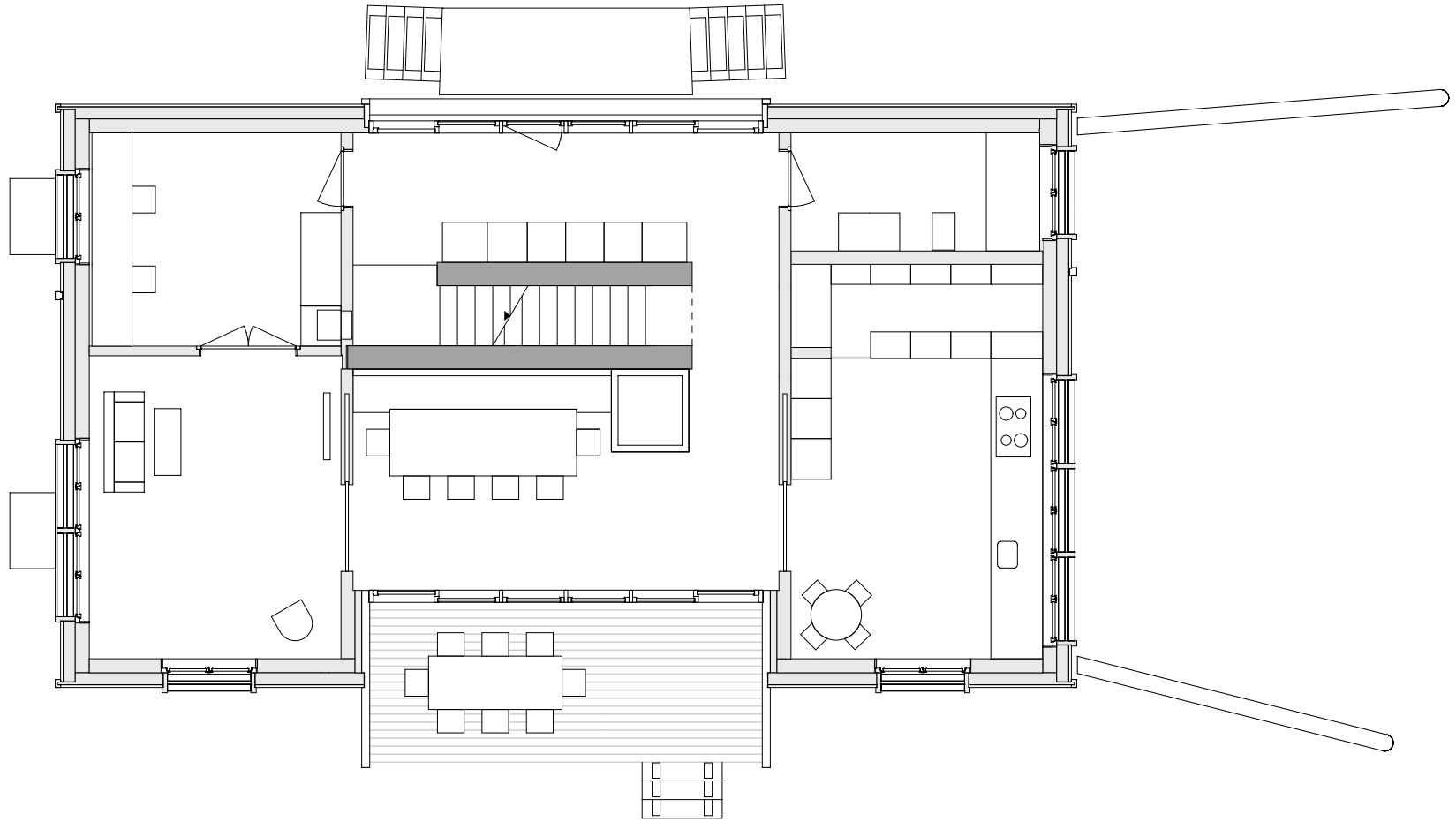




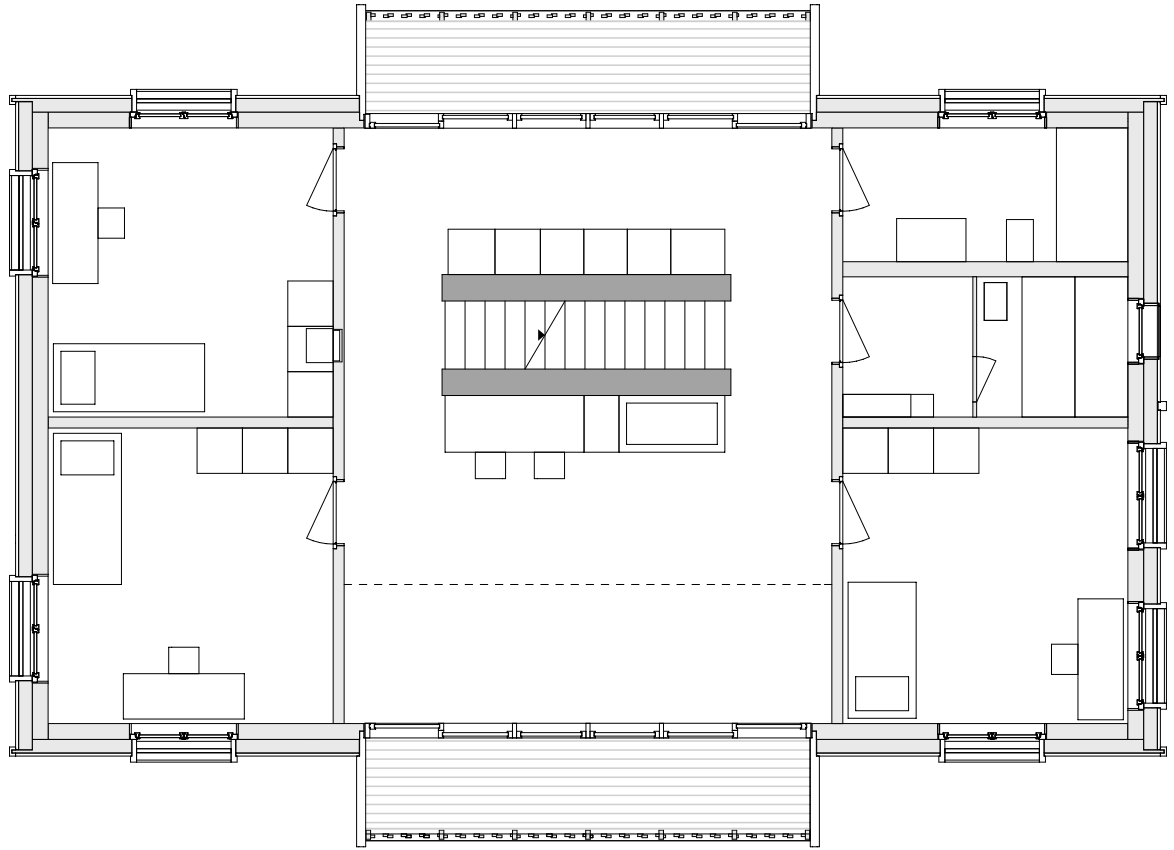


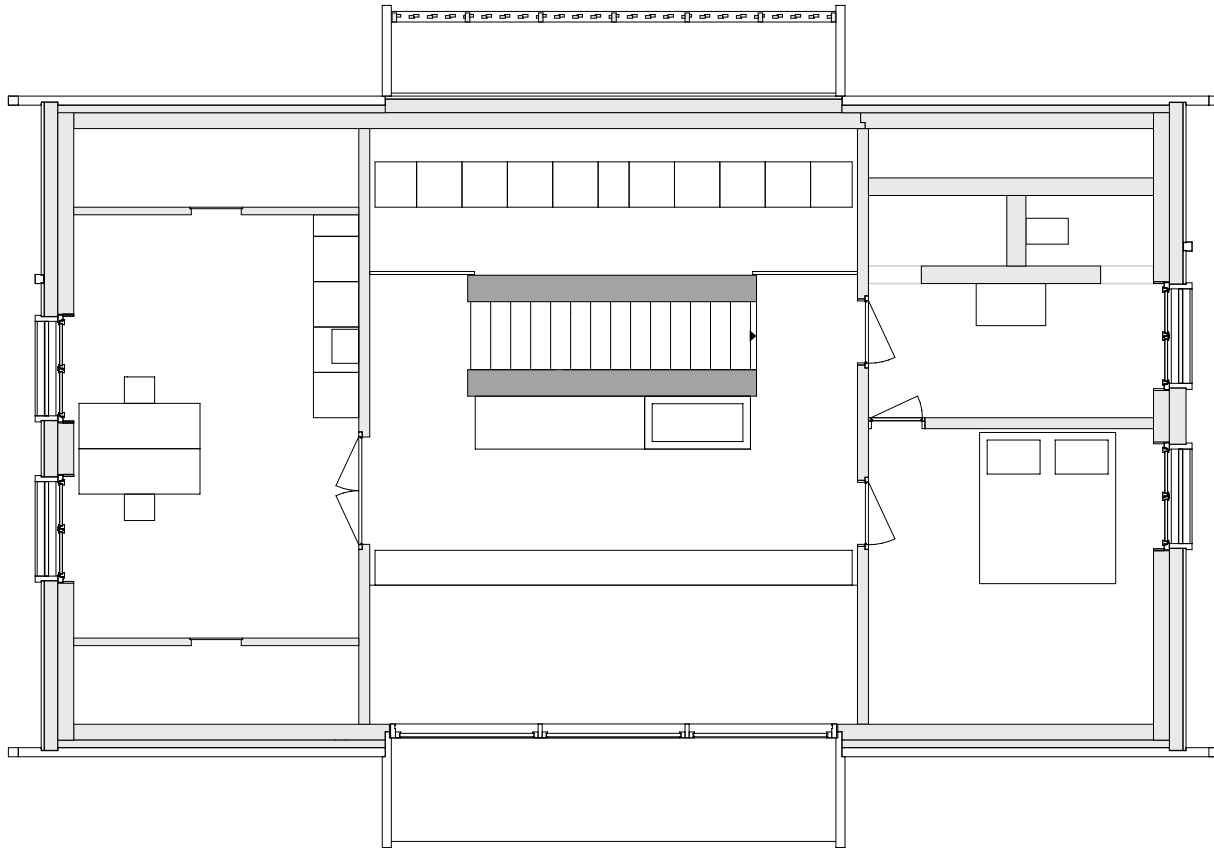




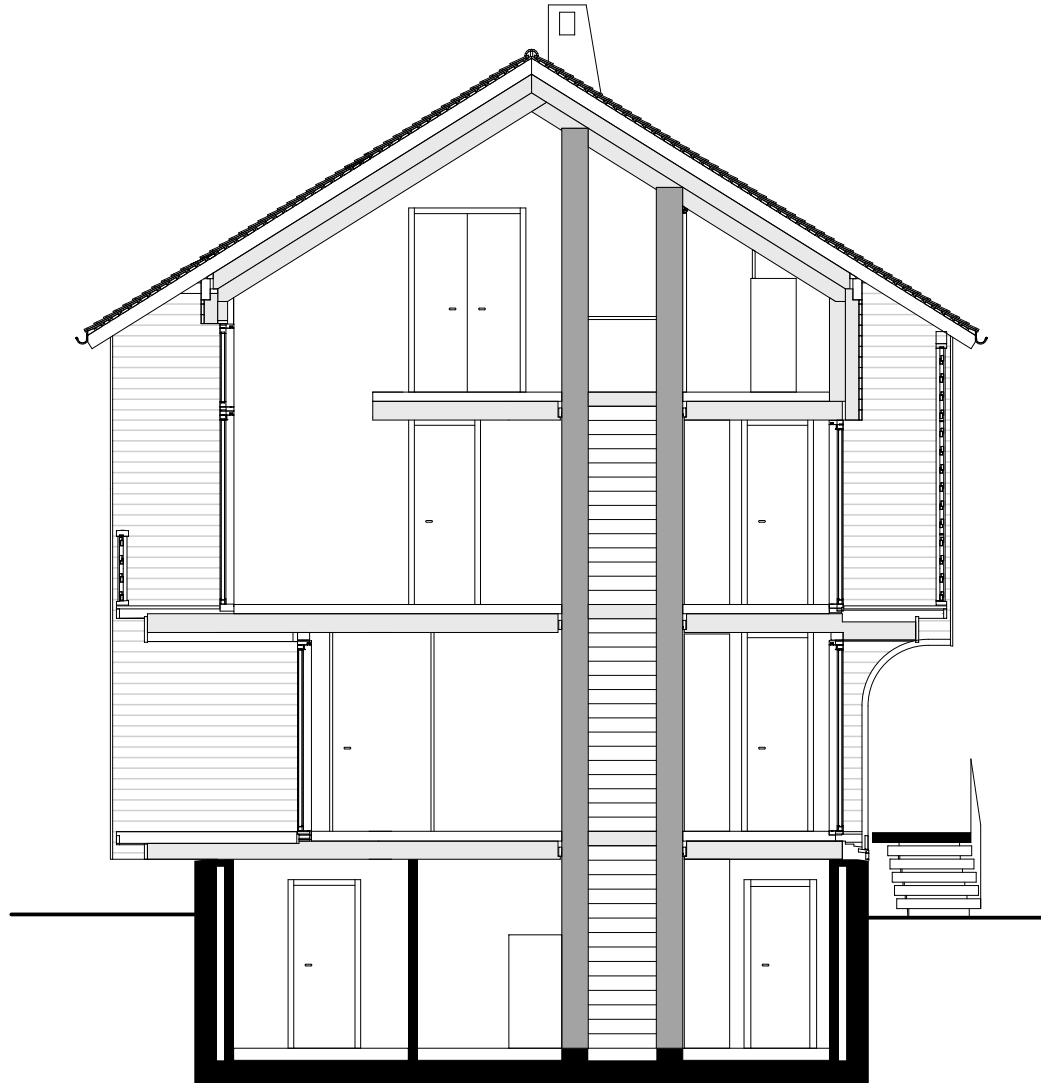


















R2

R3

R1









































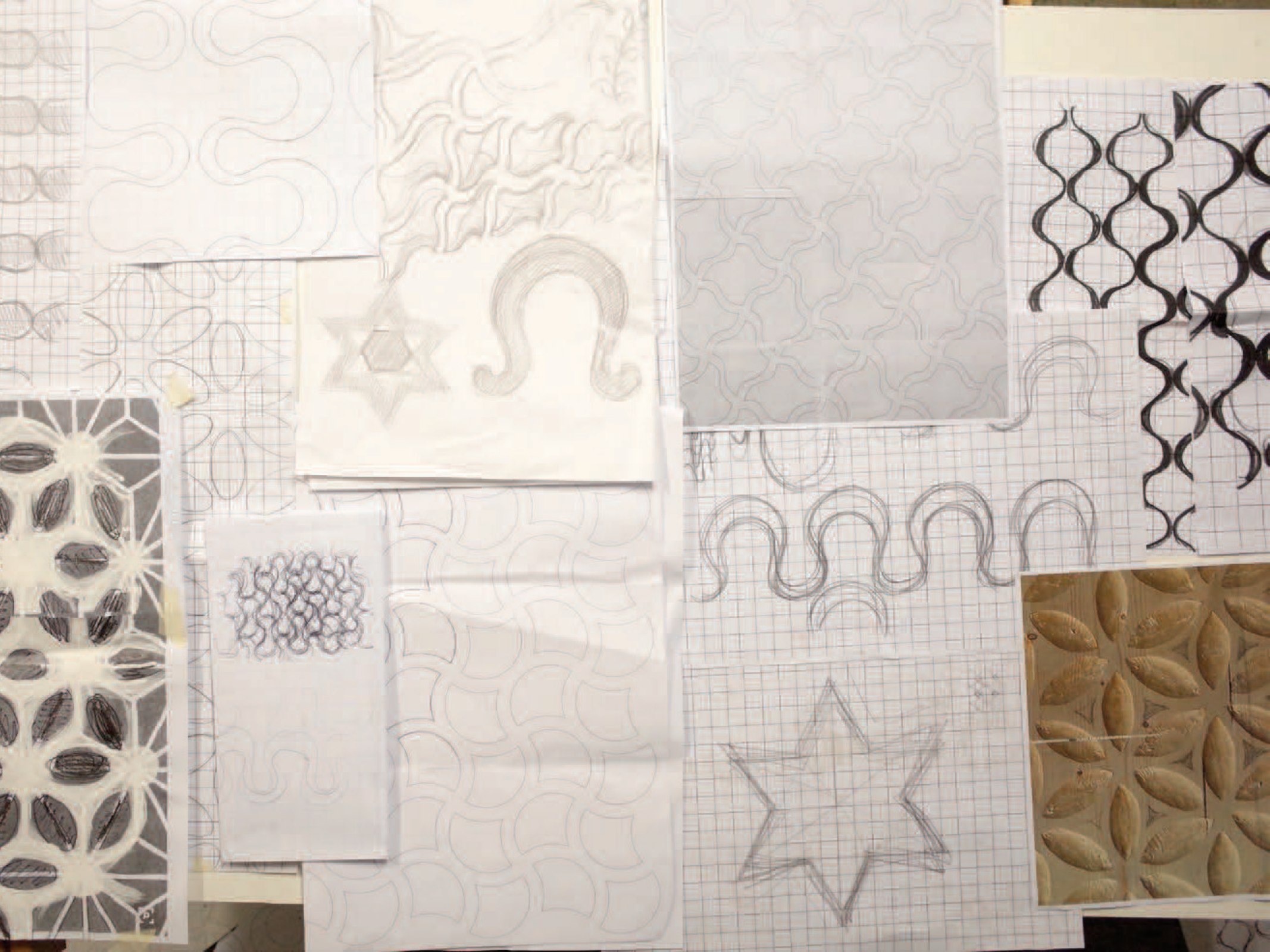
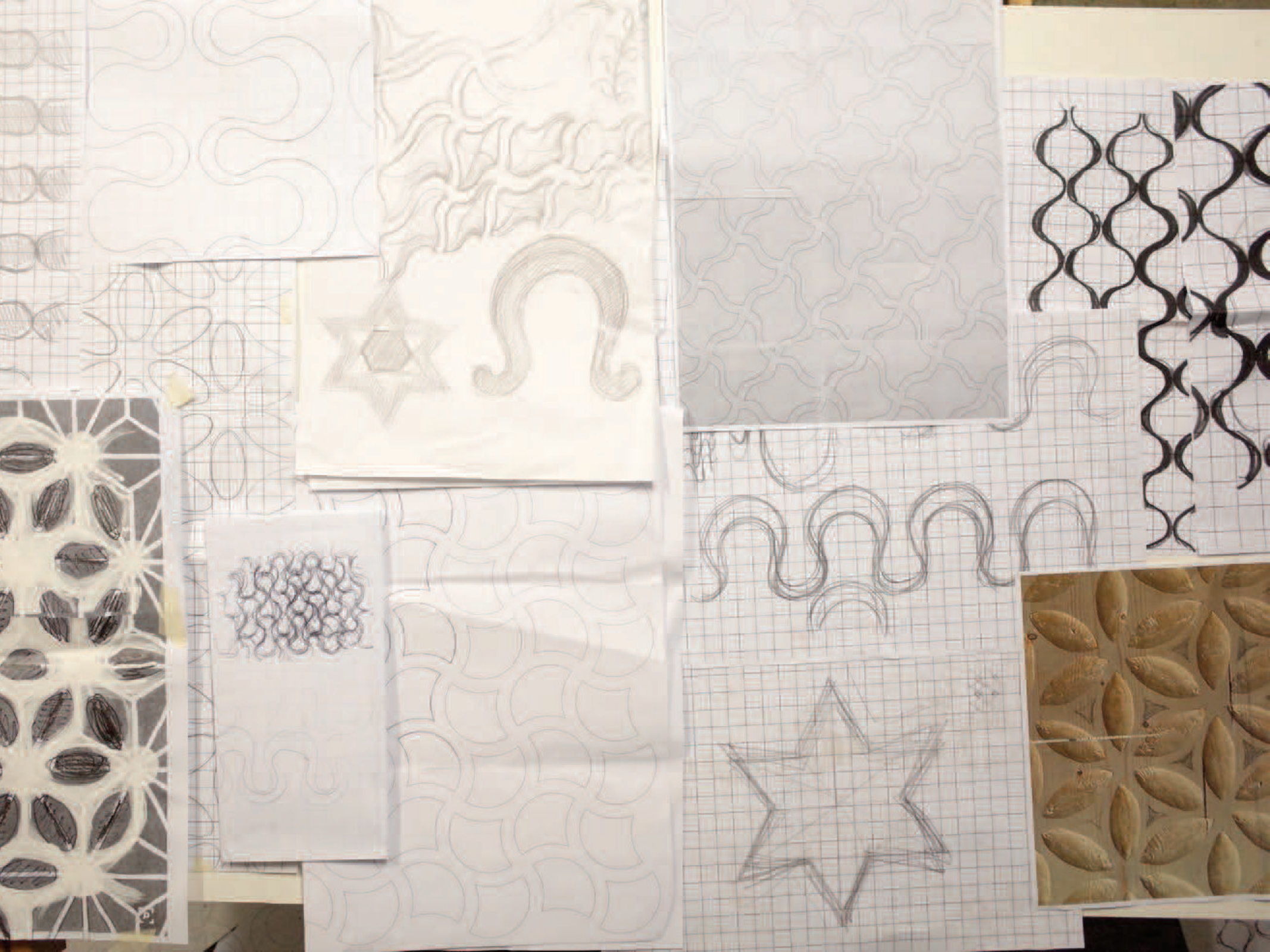
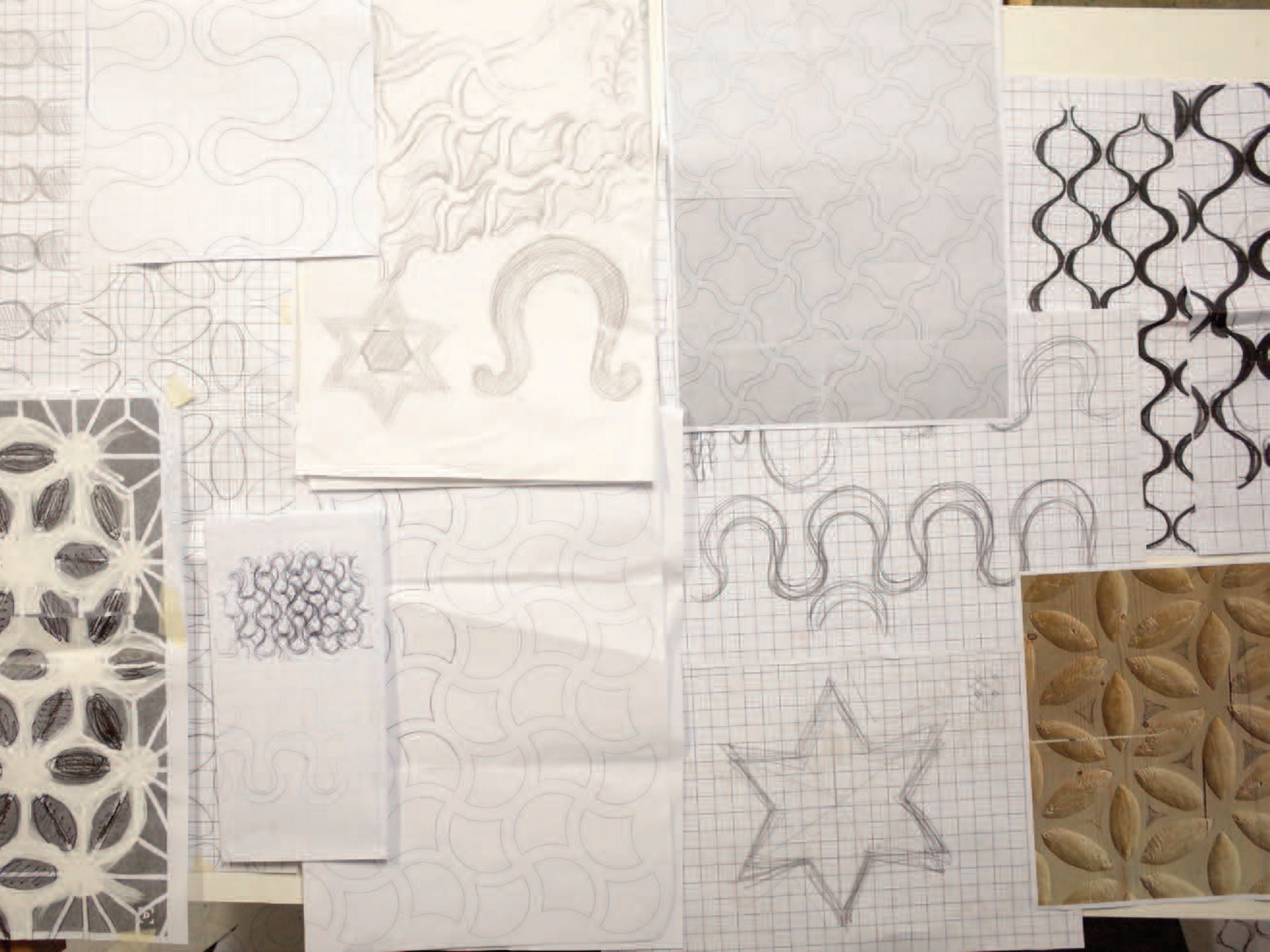




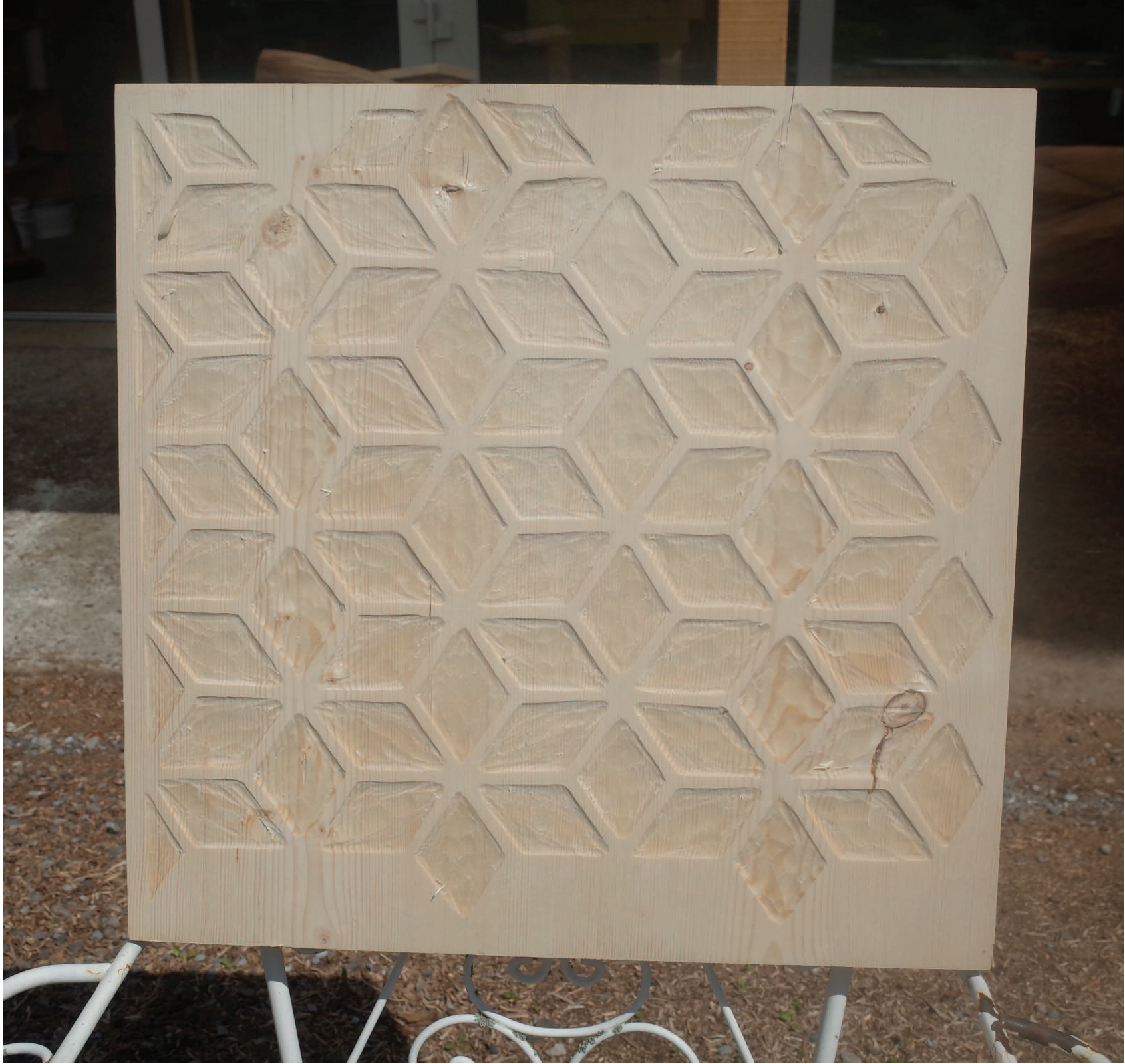
















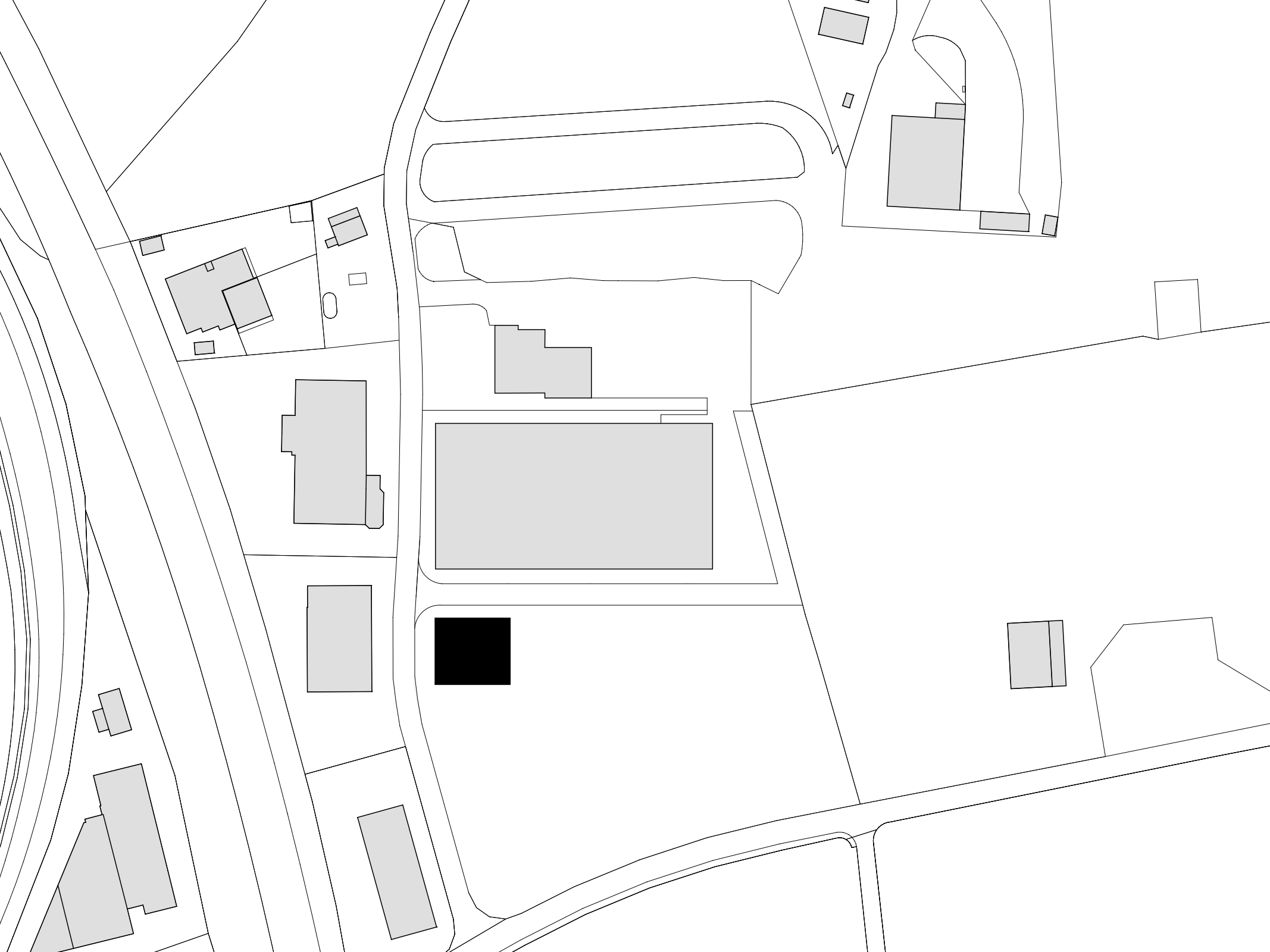


# Office Building K ng Holzbau Alpnach, 2017-20

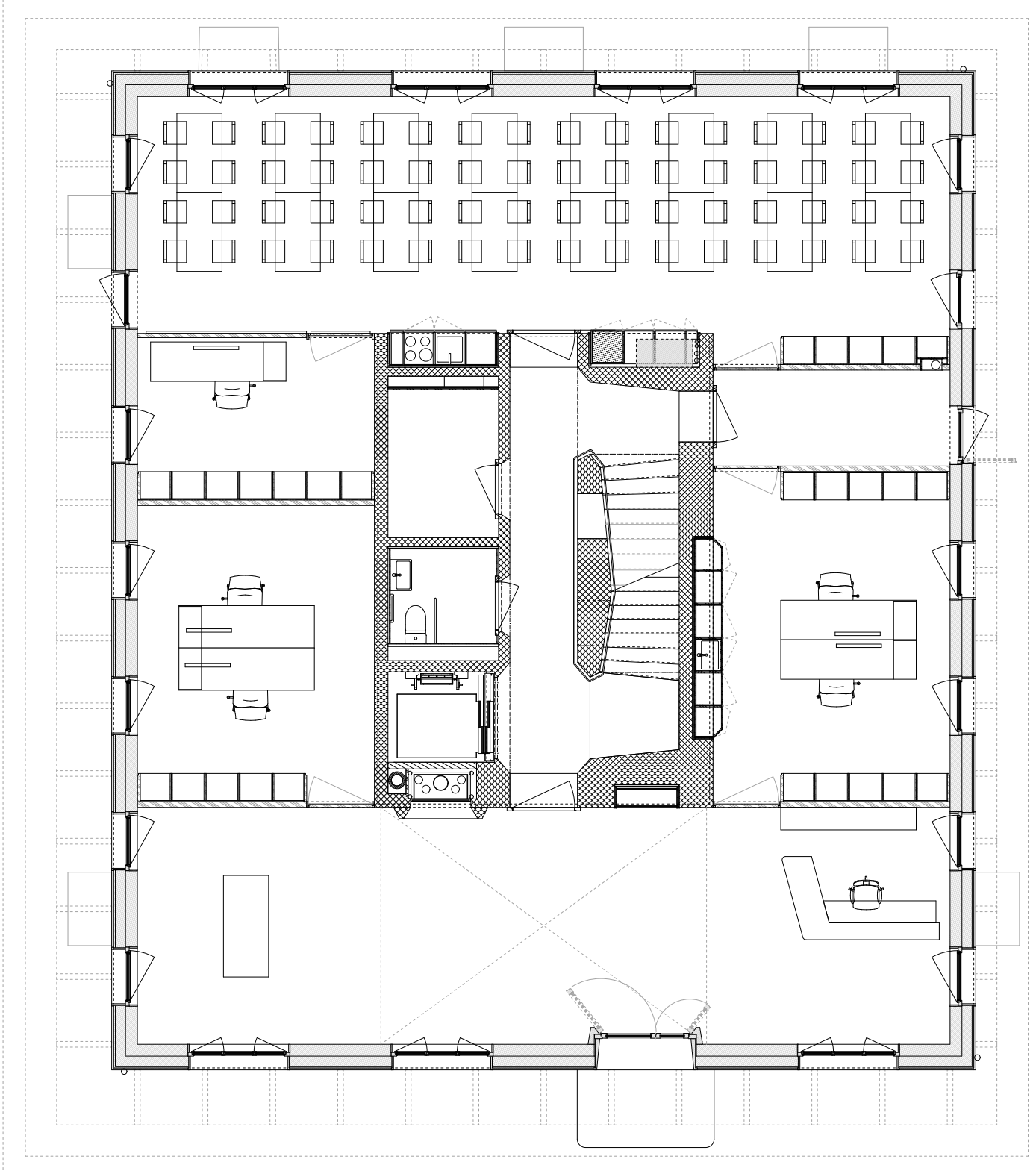




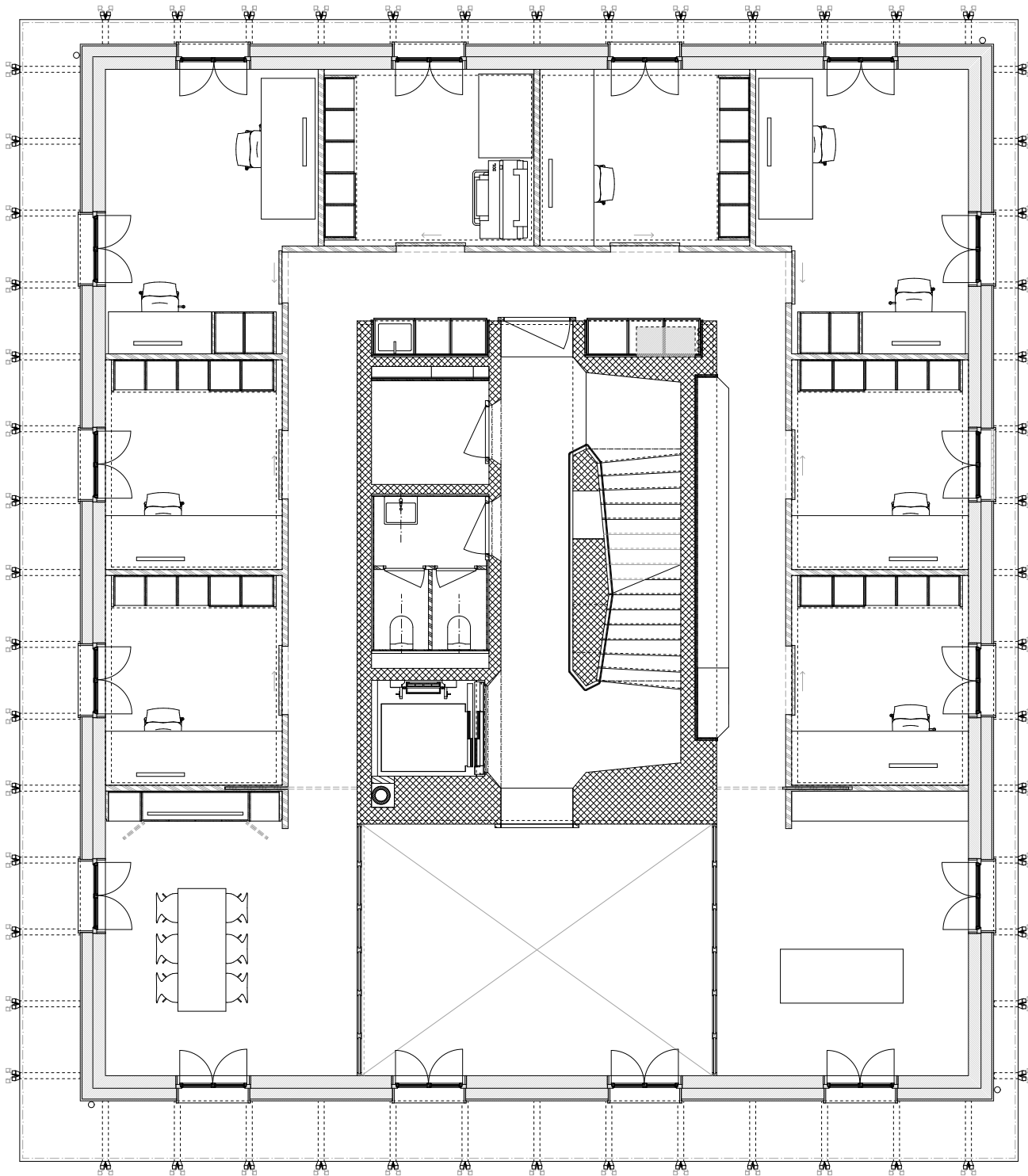




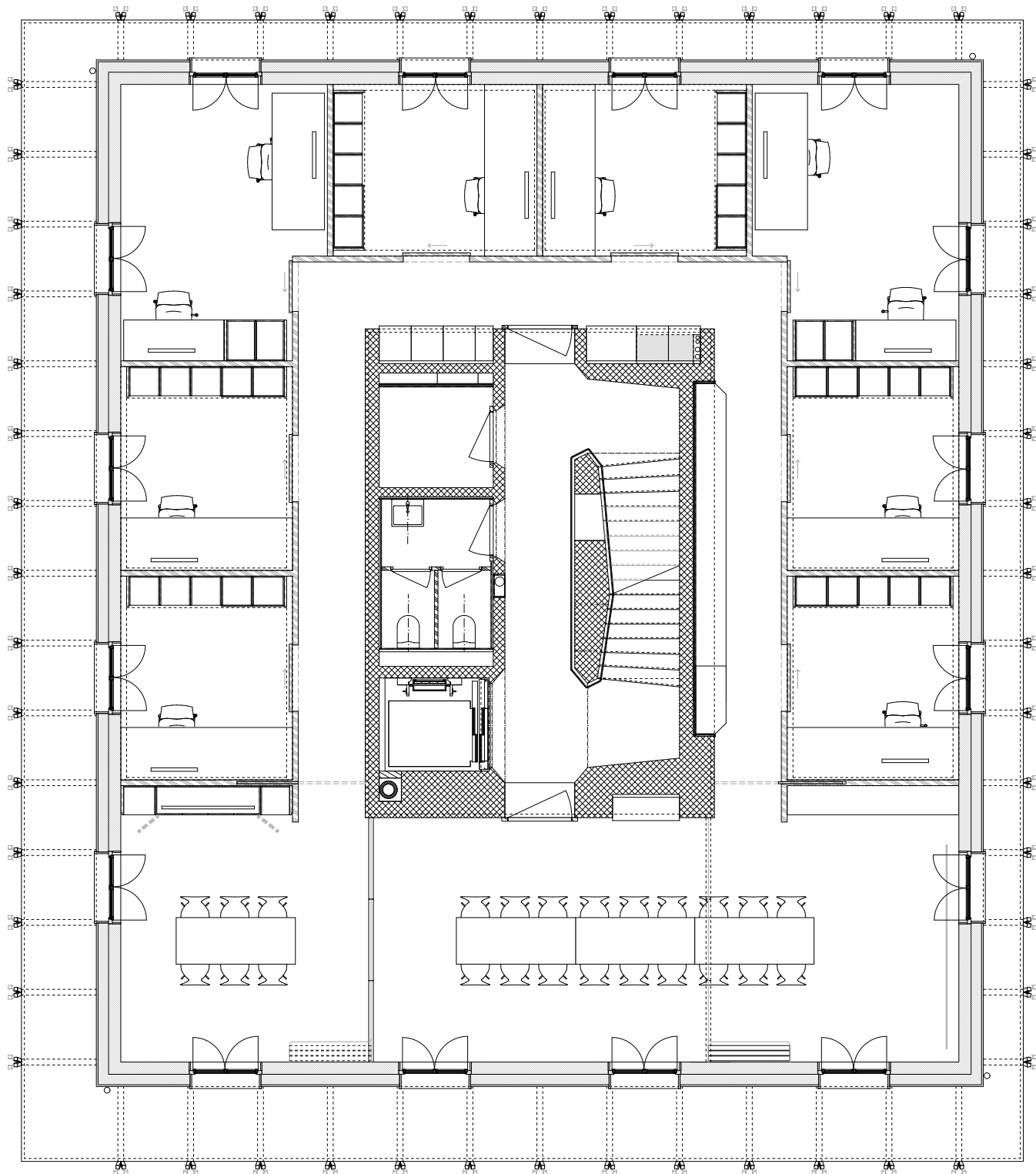


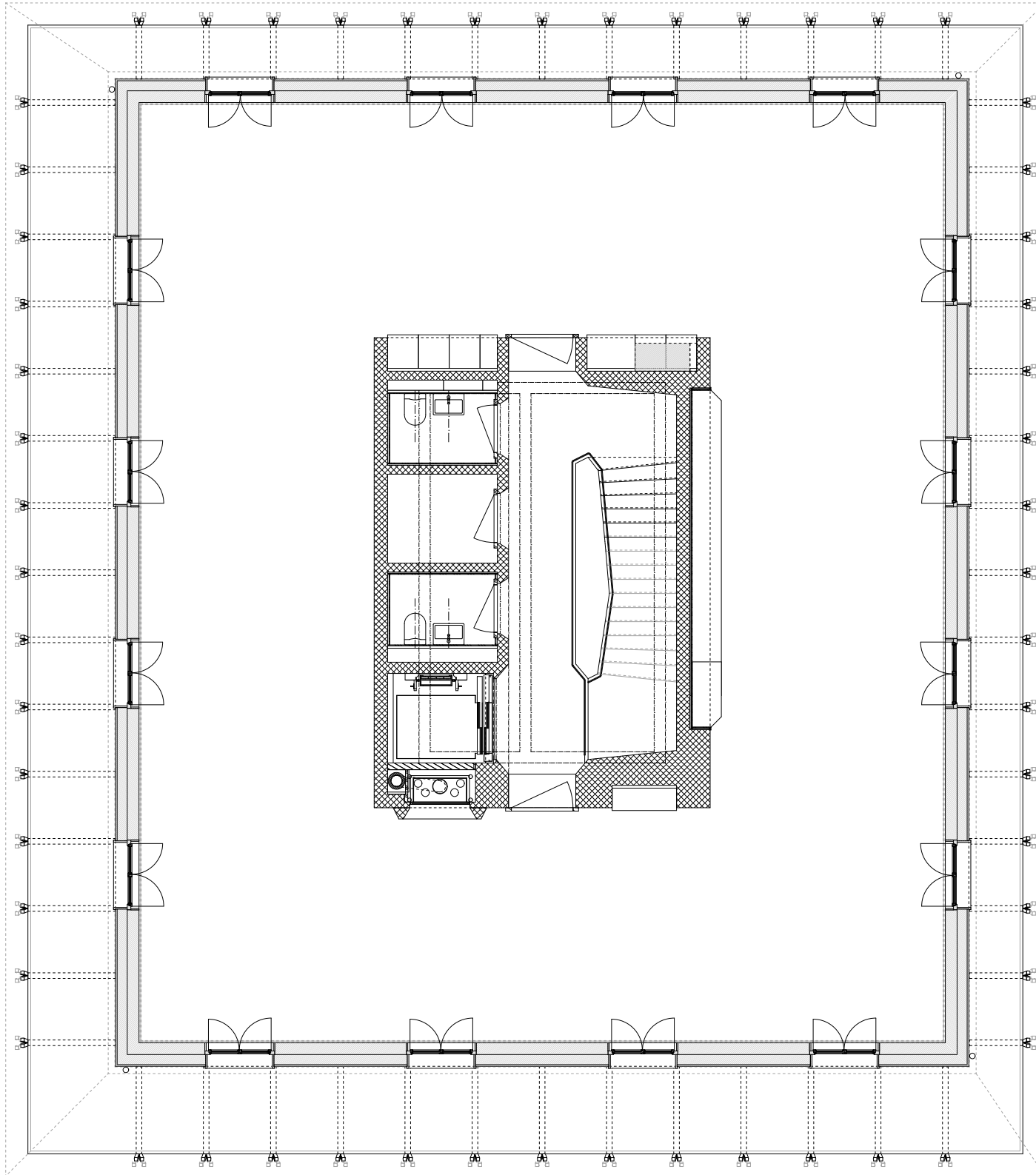




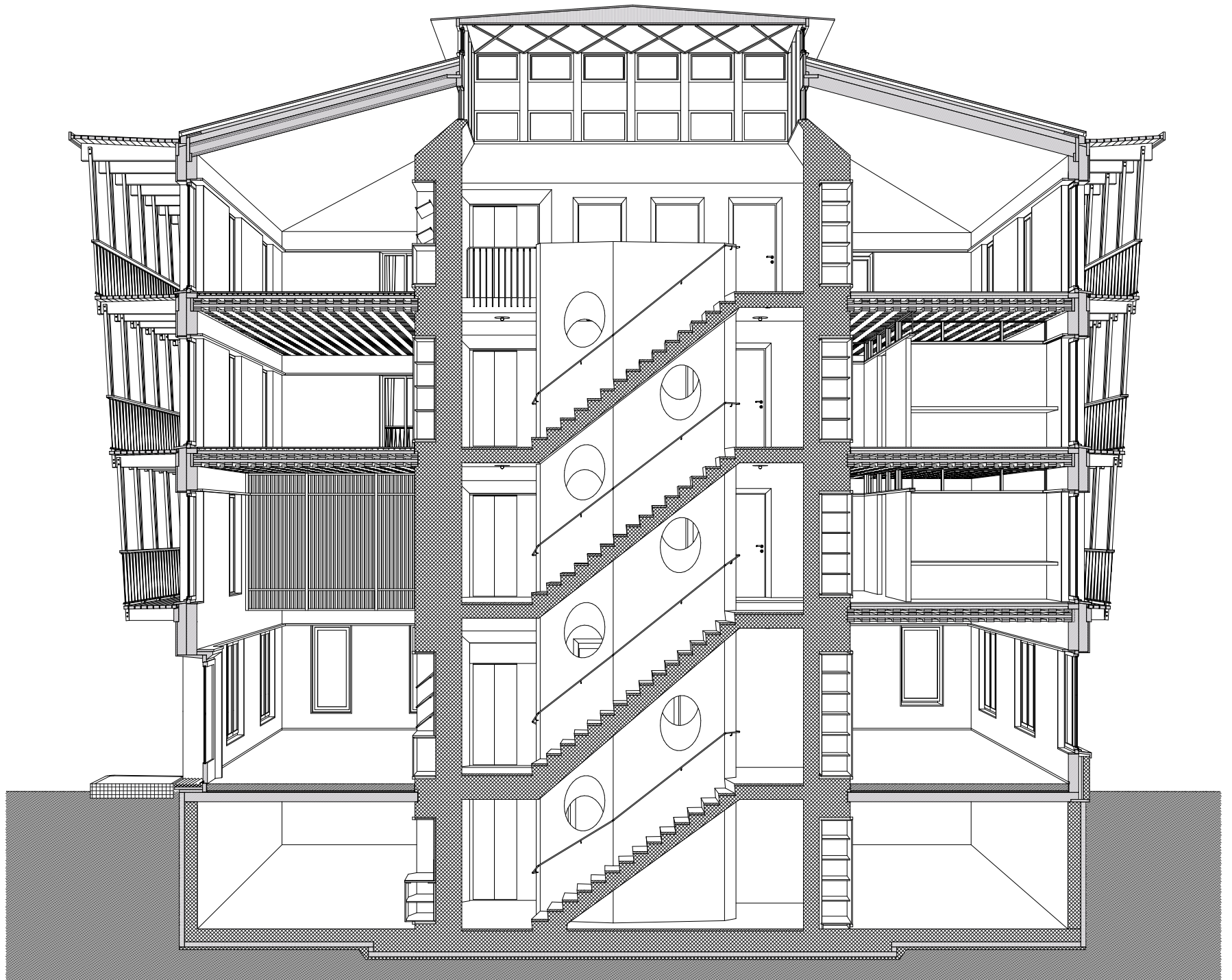










































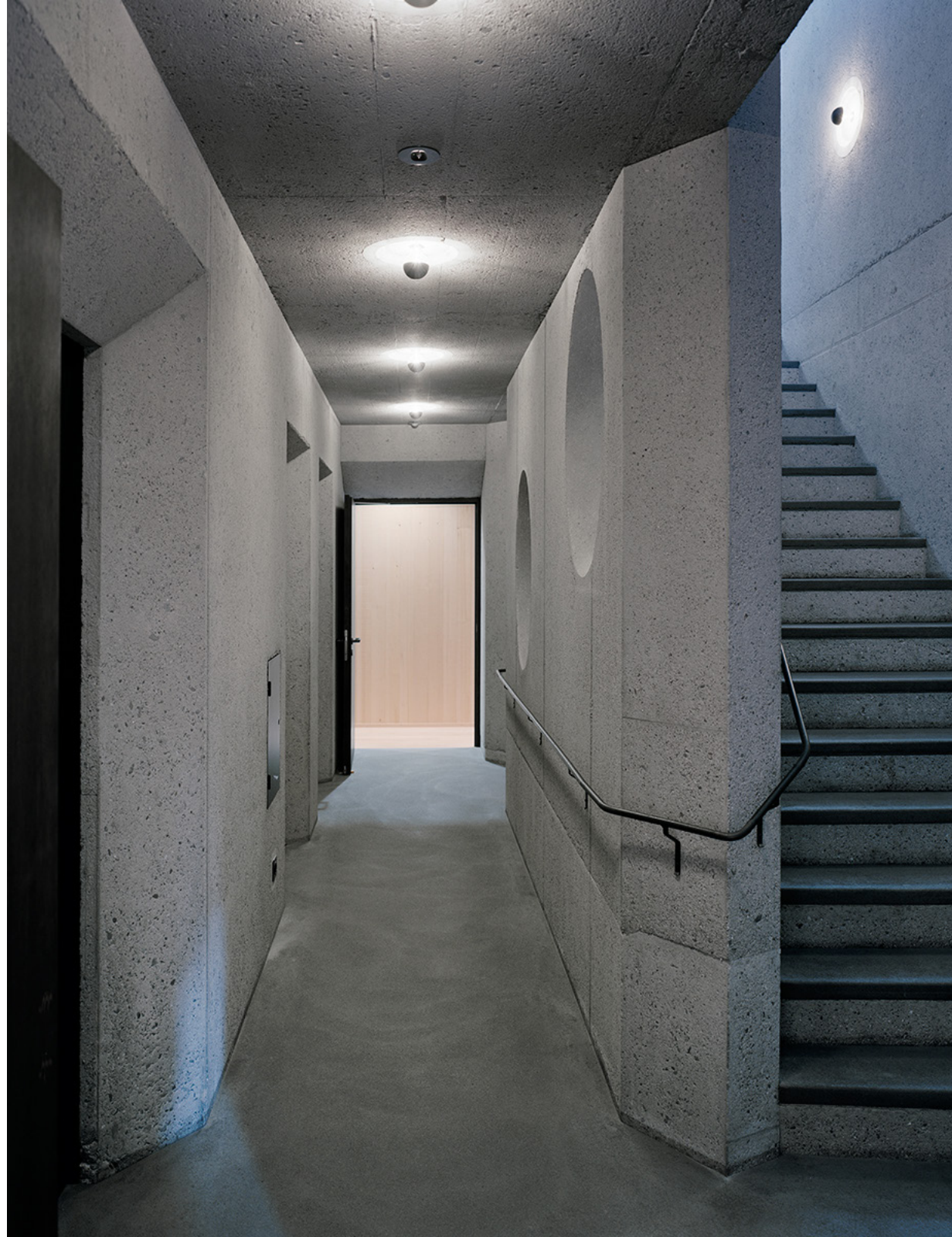






































Thank you for your  
attention!