



...towards  
a greener,  
safer and  
smarter  
European  
Road  
Transport  
System

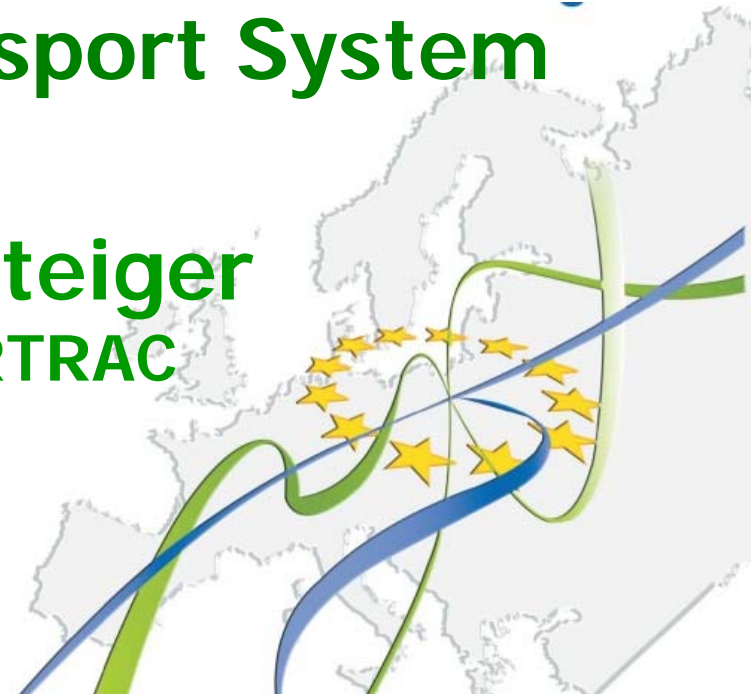
---

# ERTRAC

## European Road Transport Research Advisory Council

**..towards a greener, safer and smarter  
European Road Transport System**

**Wolfgang Steiger**  
Chairman ERTRAC





...towards  
a greener,  
safer and  
smarter  
European  
Road  
Transport  
System

---

# Welcome

---



...towards  
a greener,  
safer and  
smarter  
European  
Road  
Transport  
System

## Reminder of the TRA Mission

---

*“The mission of TRA conferences is to support the alignment of European, national, regional and private research and development actions on road transport by enhancing the networking and clustering of Europe’s research and development capacity based on a shared Strategic Research Agenda (SRA) and Research Framework.”*

---



# ERTRAC Vision and SRA process

...towards  
a greener,  
safer and  
smarter  
European  
Road  
Transport  
System



- **Priorities**
- **FP7**
- **X-Stakeholder Topics**
- **Tbd Projects/ JTI ...**



...towards  
a greener,  
safer and  
smarter  
European  
Road  
Transport  
System

## Why ERTRAC, why TRA?

---

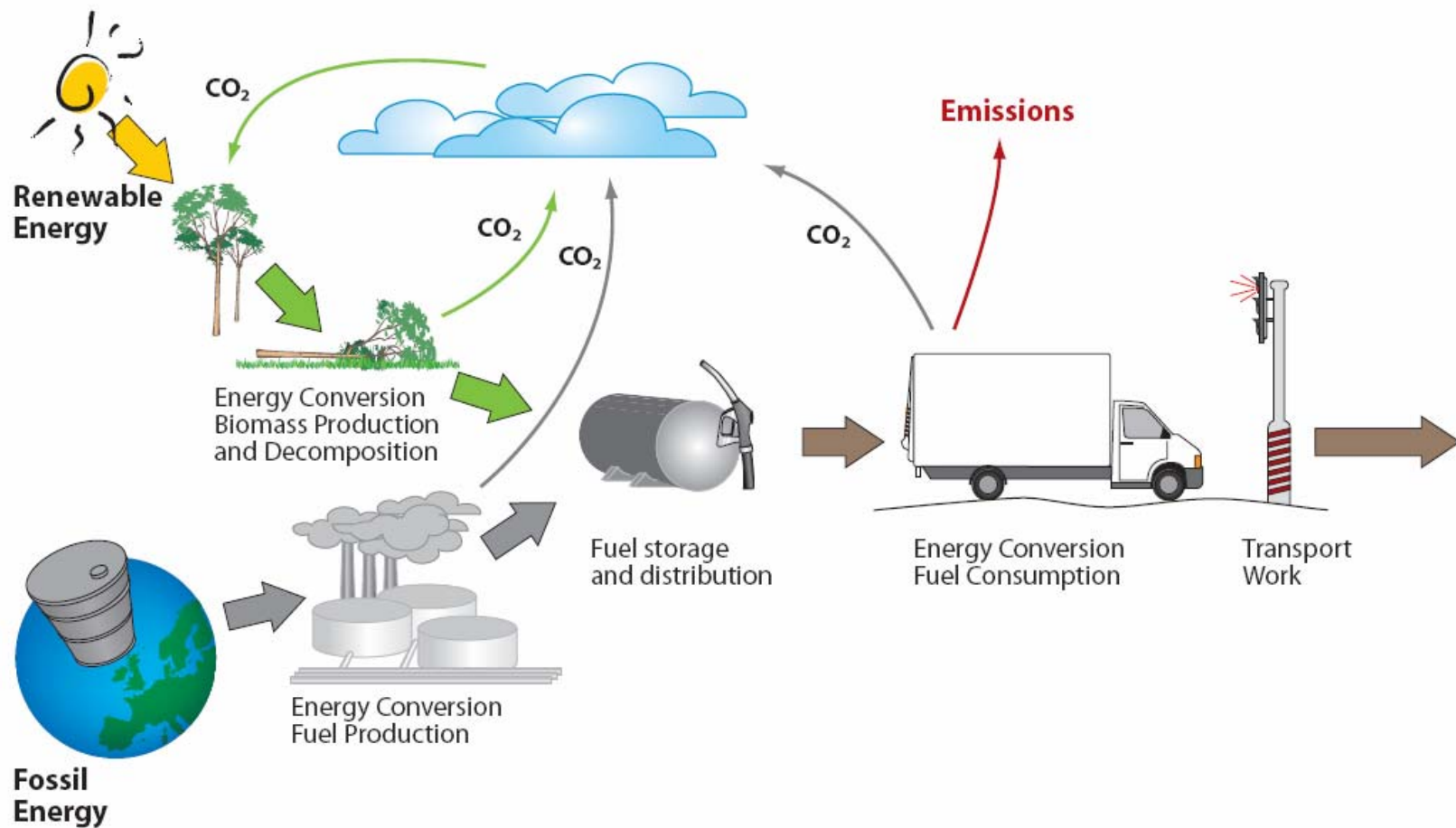
- **Road transport is a complex, multi-stakeholder system**
- **Road transport, one of the largest sectors in Europe:**
  - 20% GDP contribution,
  - 9% workforce
  - 30% R&D expenditure
  - 40,000 deaths per year
  - 20% CO<sub>2</sub>
- **ERTRAC addresses all the challenges of European Road Transport**
- **TRA is the main fora for communication**





# Systems approach to major challenges

...towards  
a greener,  
safer and  
smarter  
European  
Road  
Transport  
System

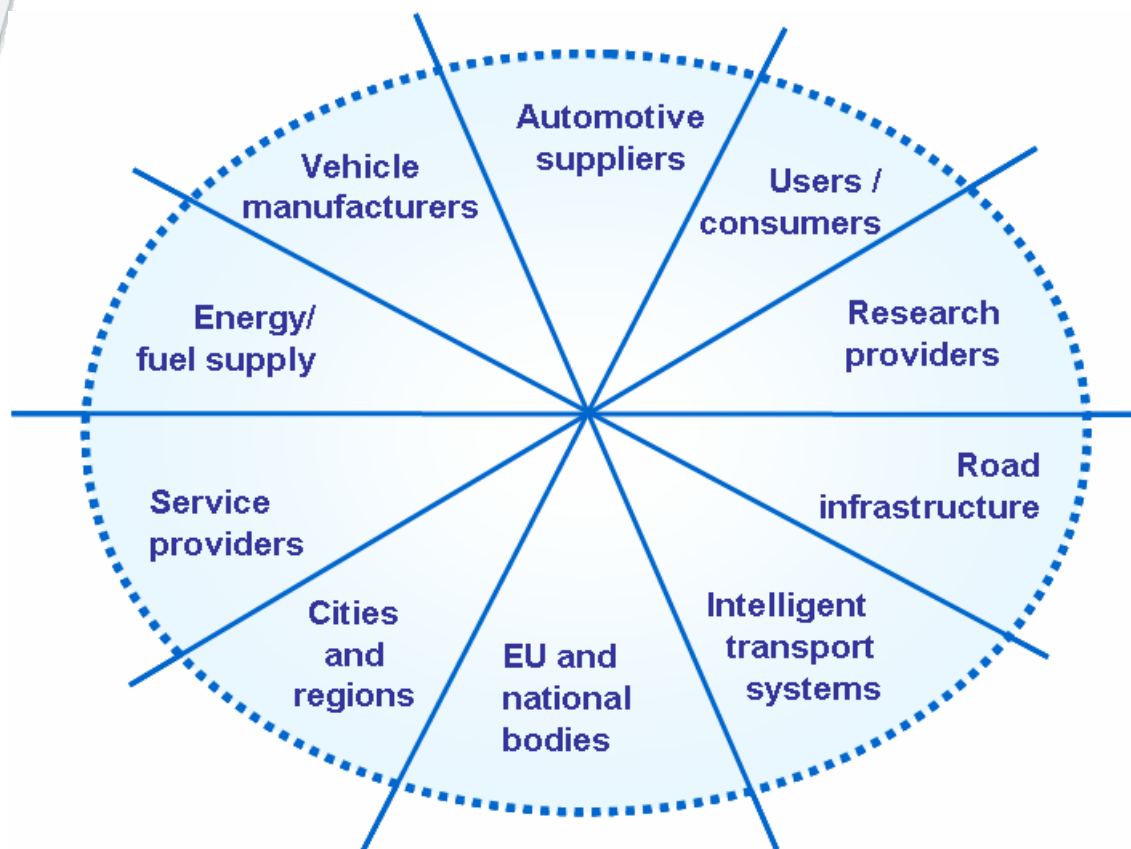




# ERTRAC Members

---

...towards  
a greener,  
safer and  
smarter  
European  
Road  
Transport  
System



All major  
Road Transport  
Stakeholders  
are represented  
in ERTRAC,  
through their  
associations, as  
representatives  
of the EU and  
other Member  
States.

---

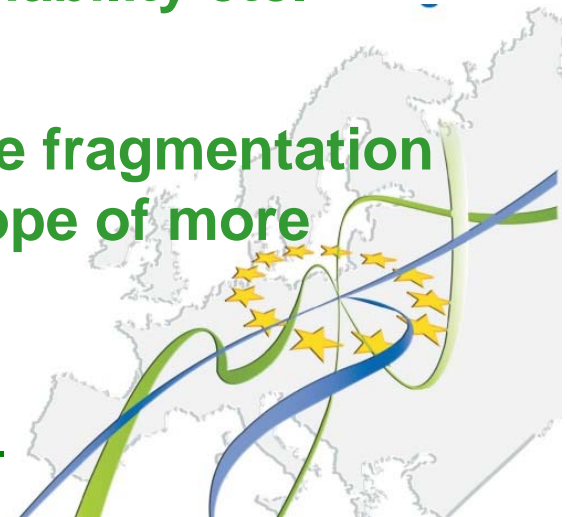


...towards  
a greener,  
safer and  
smarter  
European  
Road  
Transport  
System

## ERTRAC's unique position

---

- Road transport sector is heterogeneous with so different stakeholders and links with other sectors. All those players use the Platform to discuss / monitor the research needed for the future.
- In ERTRAC's broad spectrum of stakeholders many other non research issues / needs are to be taken into account - standards, regulatory, liability etc.
- ERTRAC has the goal to overcome the fragmentation of road transport research in the Europe of more than 30 different nations.







...towards  
a greener,  
safer and  
smarter  
European  
Road  
Transport  
System

## ERTRAC research framework topics

---

ERTRAC's inventory of research topics provides the foundation for smart system solutions. It is structured in our 4 research areas:

- Mobility, transport and infrastructure
- Safety and security
- Energy, environment and resources
- Design and production systems

These form the basis for our TRA structure over the next few days

---



...towards  
a greener,  
safer and  
smarter  
European  
Road  
Transport  
System

## ERTRAC new Working Groups

---

- **Now we are supplementing our four Research Areas with our four Strategic Research Priorities (former horizontal topics / challenges)**
    - **Urban Mobility**
    - **Energy and Environment**
    - **Long Distance Transport**
    - **Safety & Security**
-



...towards  
a greener,  
safer and  
smarter  
European  
Road  
Transport  
System

## Your job at TRA

---

- **ERTRAC encourages improved communication between all road (and non-road) transport stakeholders**
- **Please take the opportunity to meet with experts from other disciplines.**
  - Automotive and pavement
  - ITS and bridges
  - Fuels and transport planners
  - Etc





...towards  
a greener,  
safer and  
smarter  
European  
Road  
Transport  
System

## Our belief

---

- **The challenges facing Europe's road sector are considerable; Europe's future depends on how its road transport system develops. Our common market, our social integration and our industries.**
  
  - **ERTRAC is based on the common understanding that through innovation; collaborative research and development; solutions can and will be found to all the present and coming challenges.**
-