

FEHRL



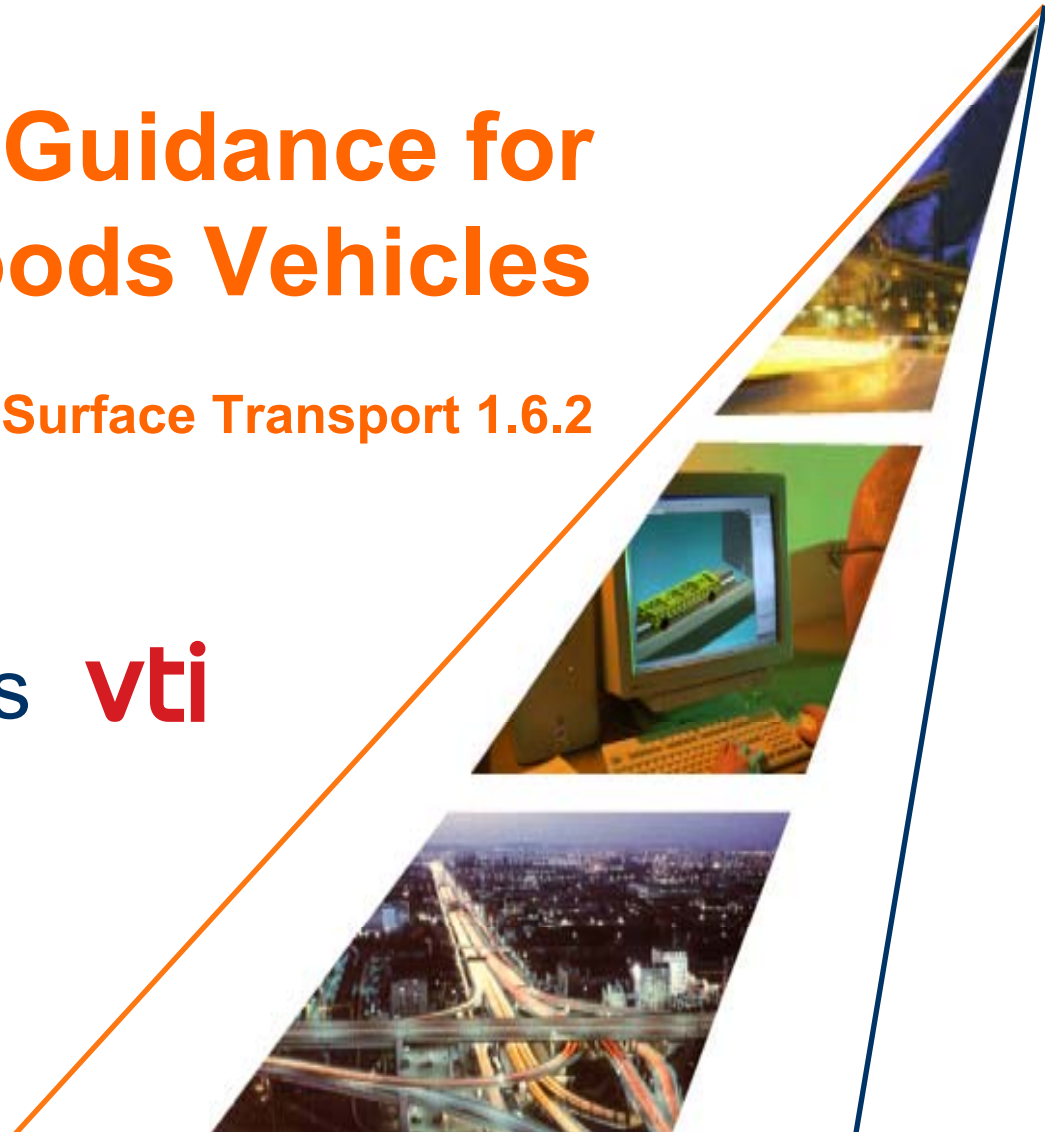
Intelligent Route Guidance for Heavy Goods Vehicles

Sustainable Surface Transport 1.6.2



Coordinator: Anita Ihs **vti**

**HEAVY
ROUTE**



HeavyRoute in figures



Start: September 2006

Duration: 30 months

Total budget: € 3.28M



8 Partners:



Two thirds of freight transport in Europe is carried out on roads. And is increasing...



Longer and heavier vehicles...

The consequences:

Congestion

Accidents

Fuel consumption

Emissions

Noise

Road and bridge damage



The consequences:

Congestion

Accidents

Fuel consumption

Emissions

Noise

Road and bridge damage



The consequences:

Congestion

Accidents

Fuel consumption

Emissions

Noise

Road and bridge damage



The consequences:

Congestion

Accidents

Fuel consumption

Emissions

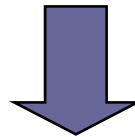
Noise

Road and bridge damage



Overall objectives

Applying and combining existing and newly developed systems, technologies, databases and models to develop an advanced HGV route guidance and driving support system



Improved **road safety** and **capacity**

Reduced negative impact on **environment**

Reduced road and bridge **maintenance costs**

HeavyRoute Stakeholders



Fleet owners and planners
Truck drivers
Road Authorities
Road and bridge operators
Service providers
Truck manufacturers
Other road users

Opinions have been assessed through workshops, interviews, and questionnaires

The HeavyRoute three main applications

- Pre-trip route planning
- Driving support (warning)
- Monitoring and management of HGVs on bridges



Pre-trip route planning

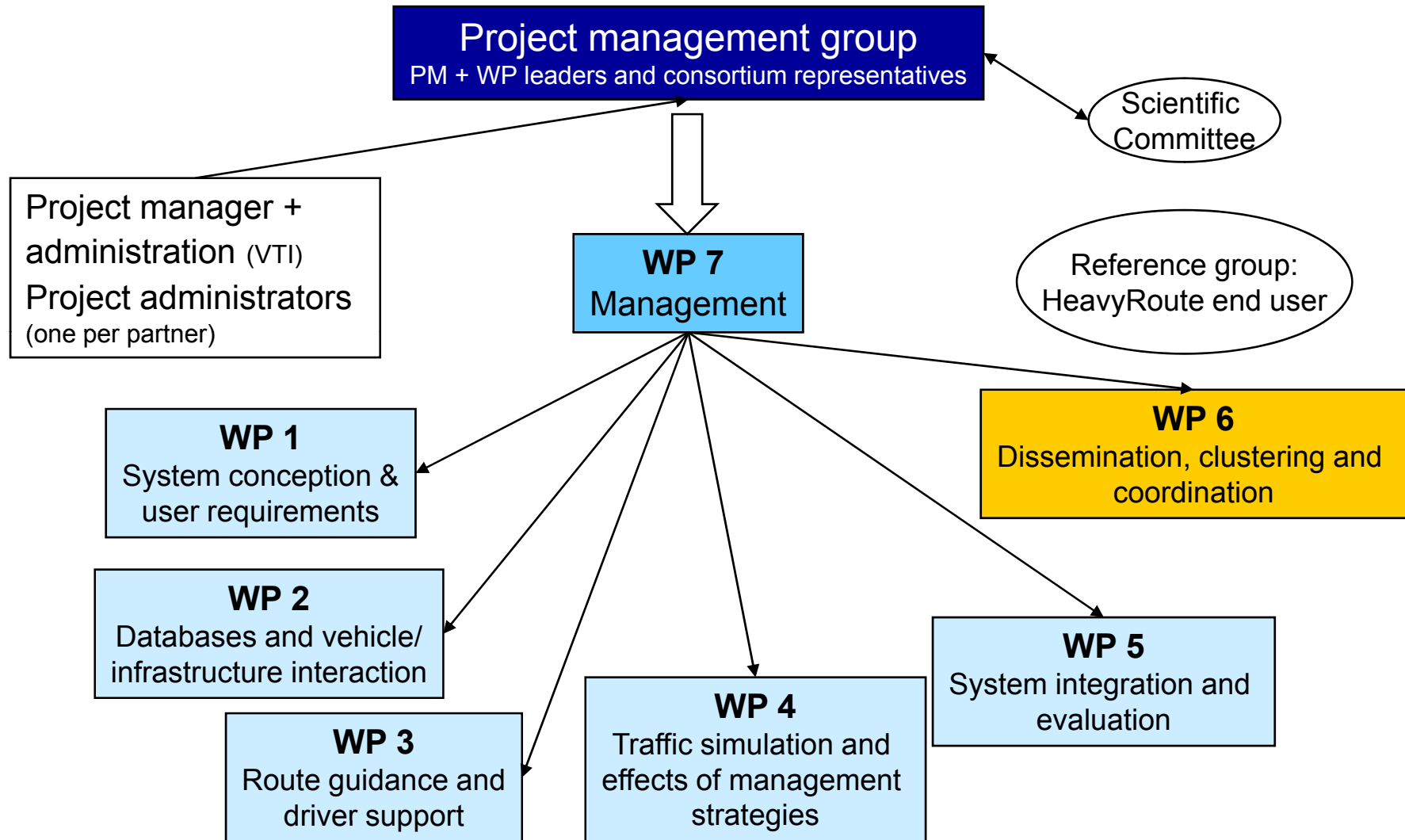
Allowable routes:

- **Physical and Legal** restrictions for HGVs, **Preferred truck networks**

Recommended routes:

- | | |
|---------------------------|-----------------------|
| • Environmental effects | Emissions |
| | Noise |
| • Vehicle Operating Costs | Fuel consumption |
| • Maintenance costs | Road damage |
| • Ride Quality | Truck roughness index |
| • Safety | |

Organisation



For more information:



Web site: <http://heavyroute.fehrl.org>

Coordinator: anita.ihs@vti.se



Programme



9:30	Vehicle/infrastructure interactions models	Leif Sjögren, VTI
9:50	Truck attributes and other map data	Kees Wevers, Navteq
10:10	The HeavyRoute cost database	Gunnar Lindberg, VTI
10:30	Panel discussion	Moderator: Bernard Jacob, LCPC
10:50	Coffee	
11:20	Pre-trip routing application	Silke Forkert, PTV
11:40	Driver support/warning (roll-over, black spots)	Hocine Imine, LCPC
12:00	Bridge management application	Hocine Imine, LCPC
12:20	Driving simulator and field tests	Anita Ihs and Leif Sjögren, VTI
12:40	Traffic simulations and CBA	Gunnar Lindberg, VTI
13:00	Panel discussions	Moderator: Bernard Jacob, LCPC
13:20	Conclusions	
13:30	Lunch	