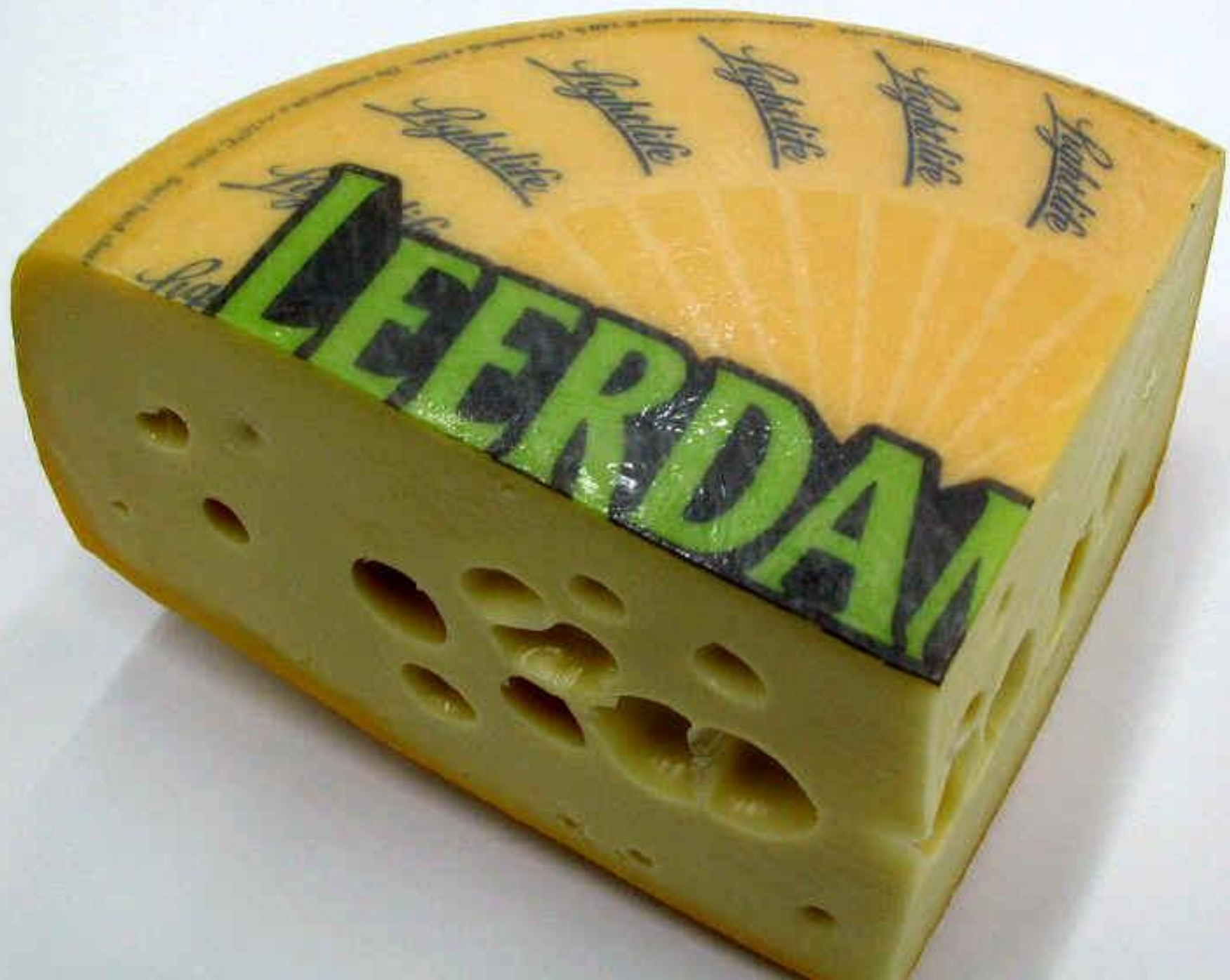


MVRDV

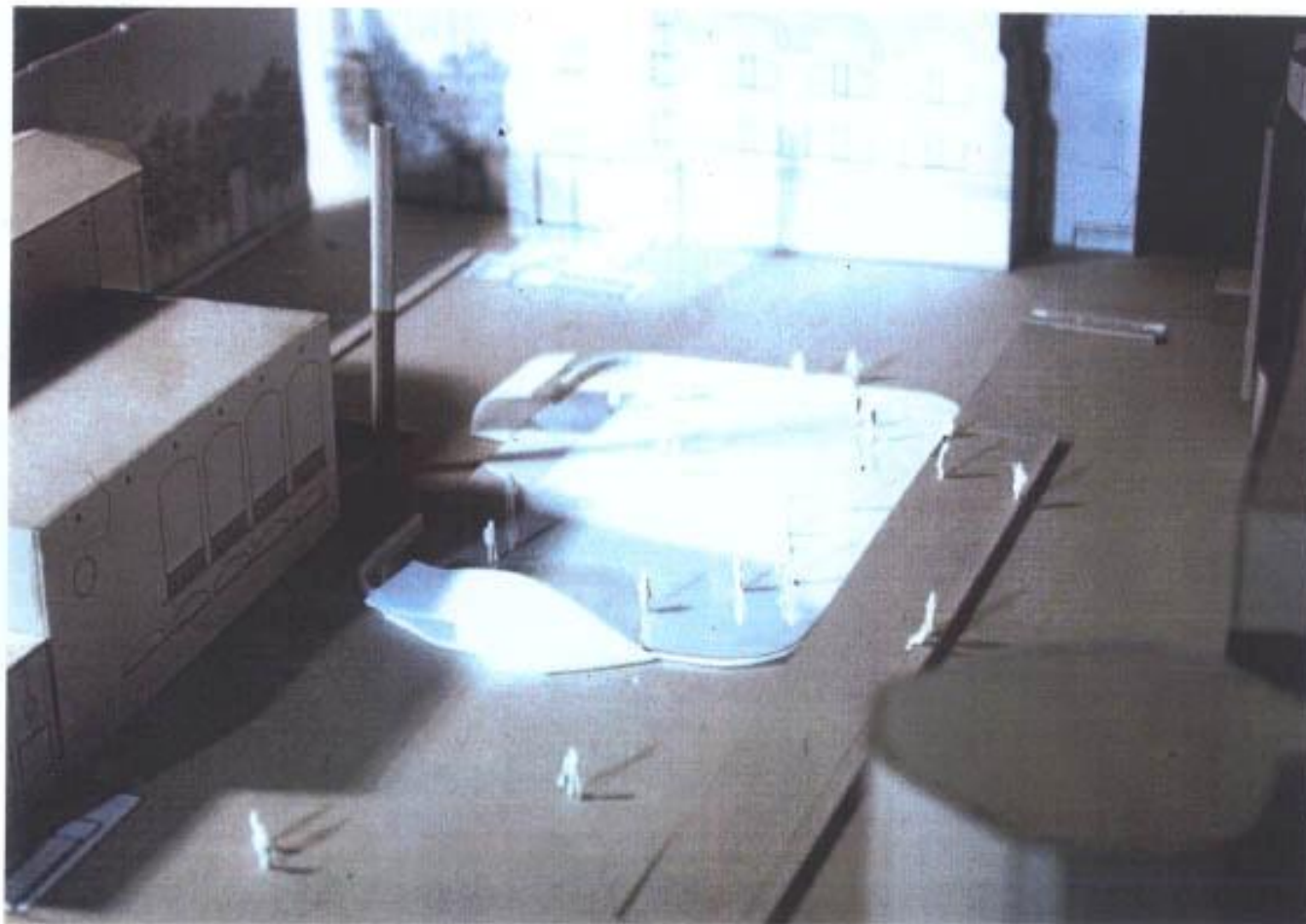






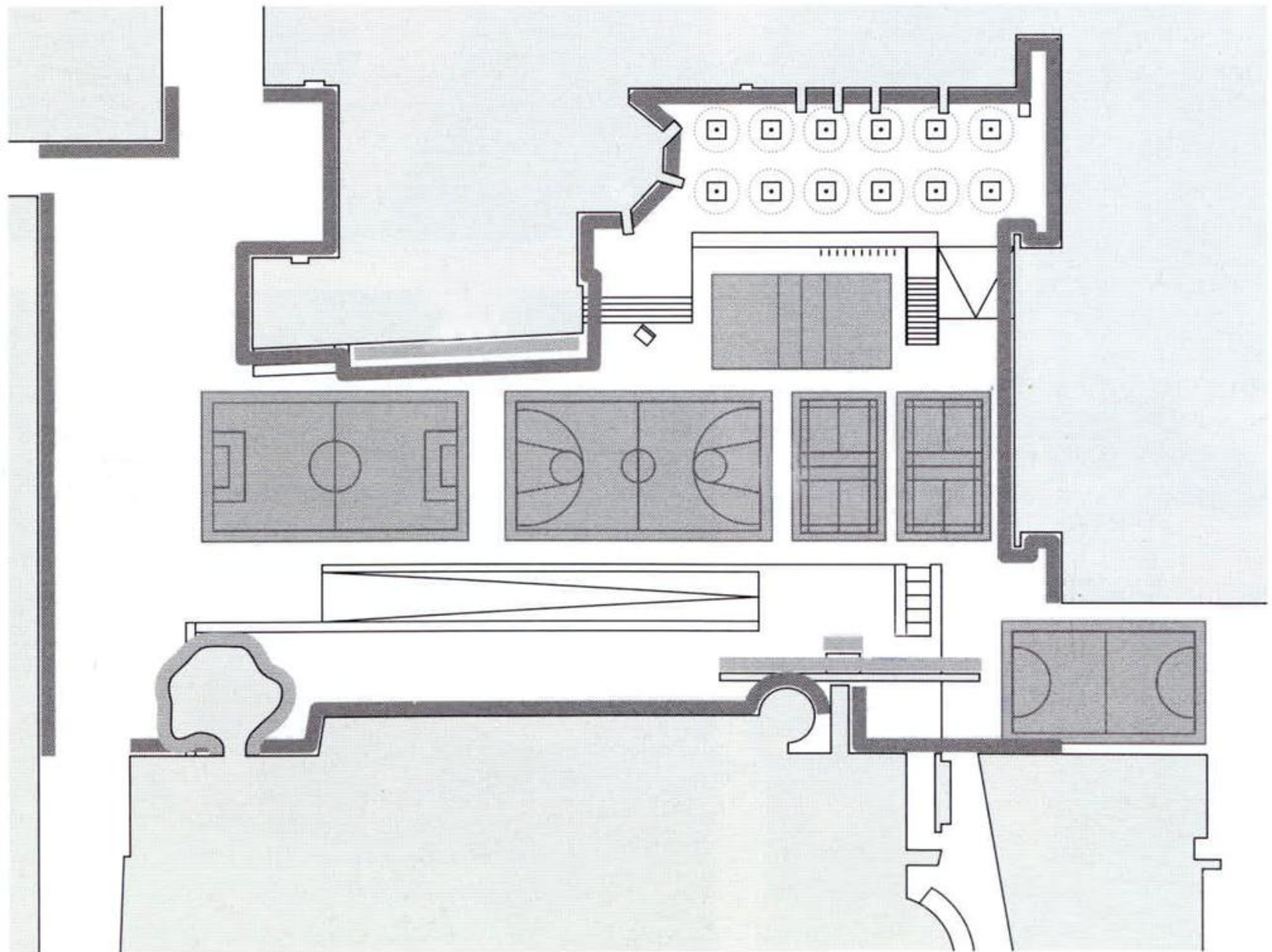






View 1

PLAN: Plaça dels Àngels



FABRICACIONES

SFMOMA

WEXNER

MOMA

MACBA

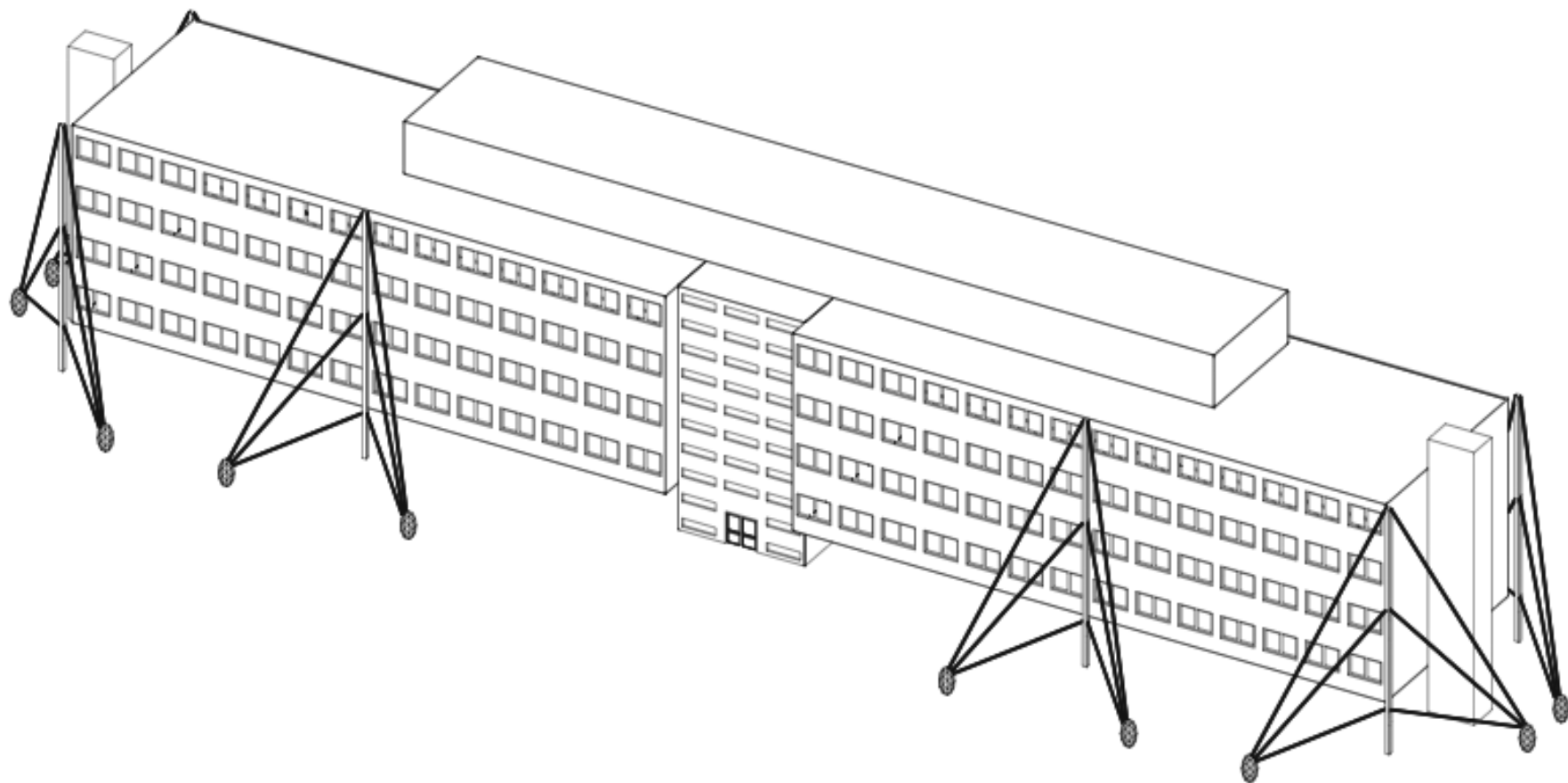


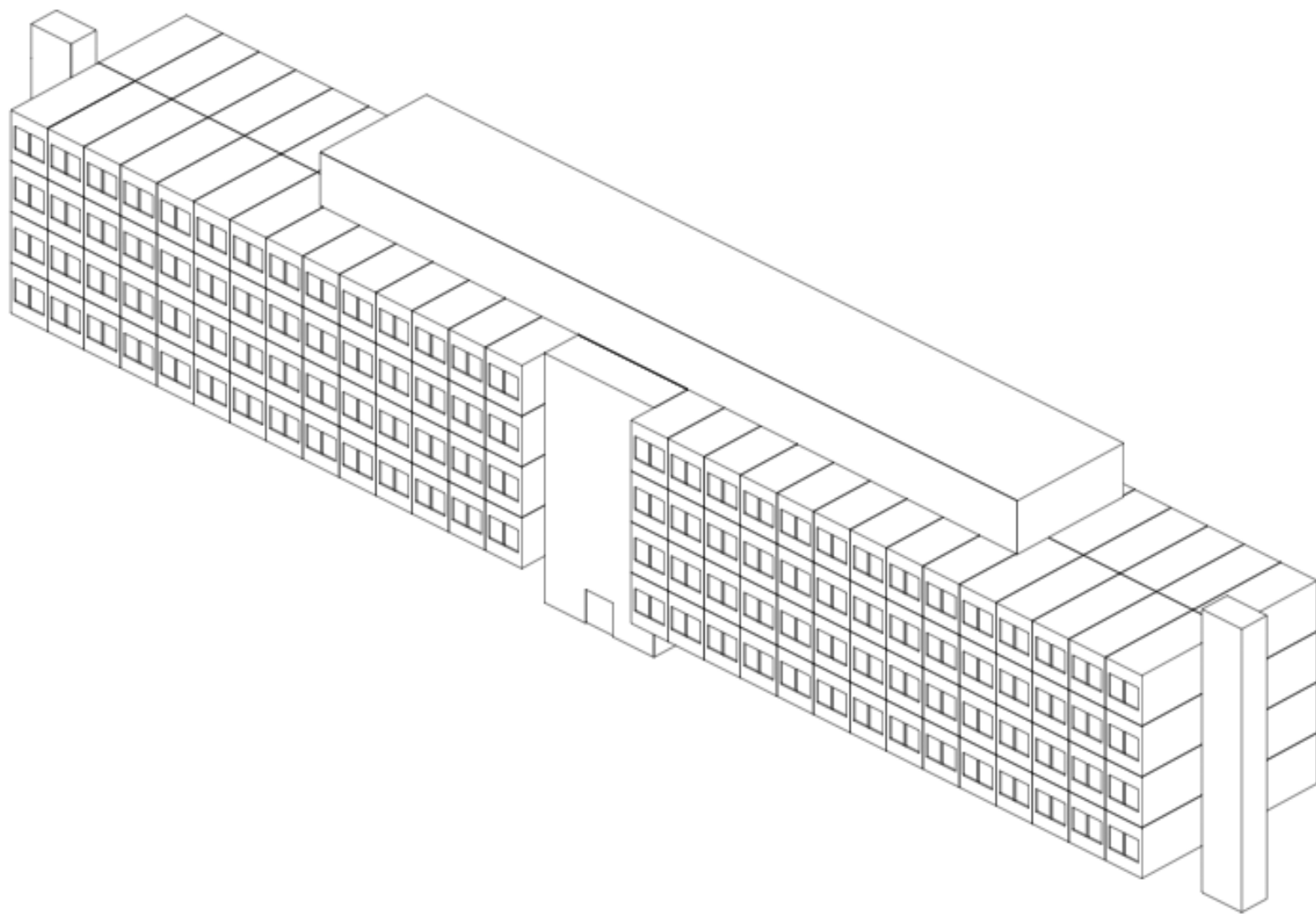


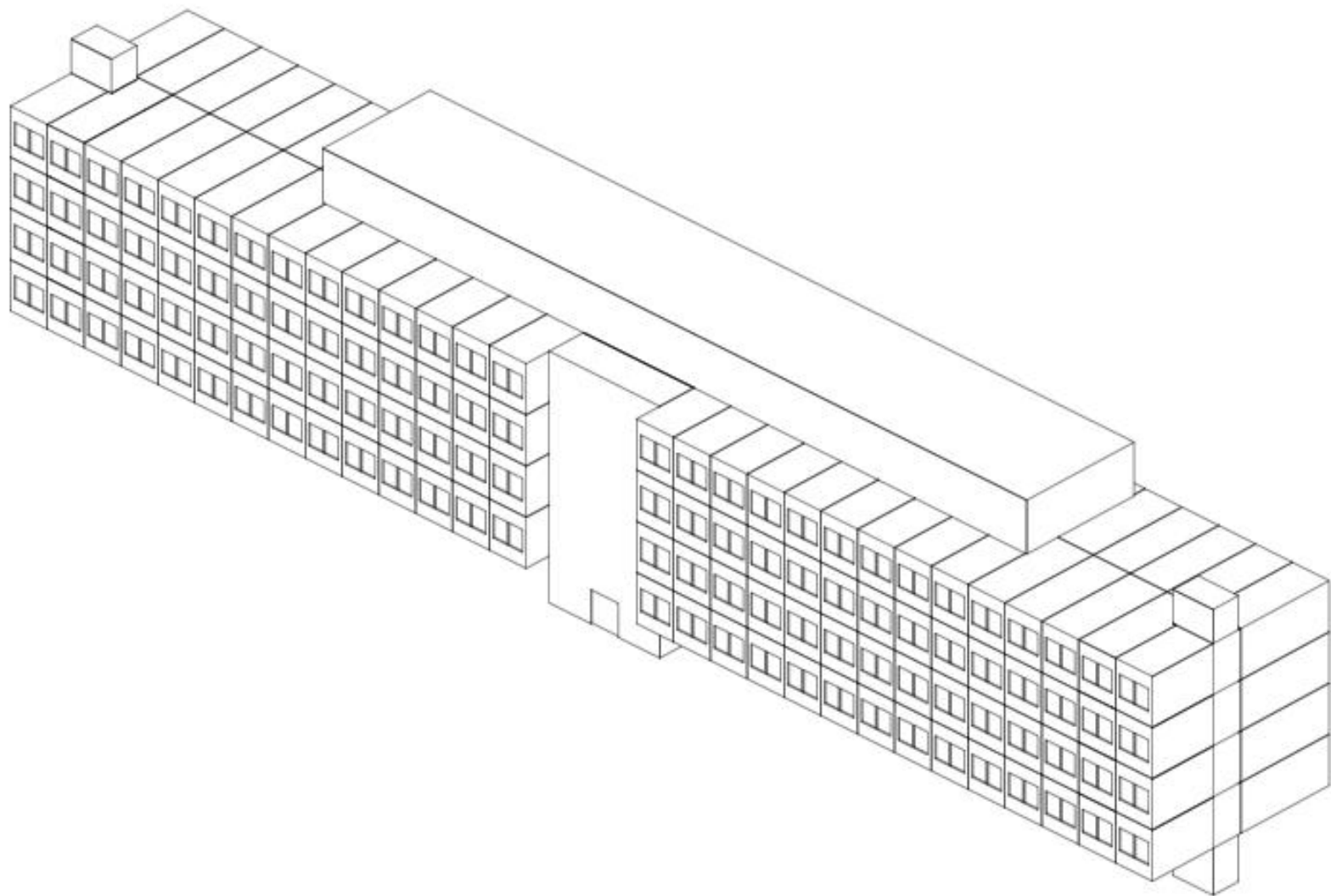


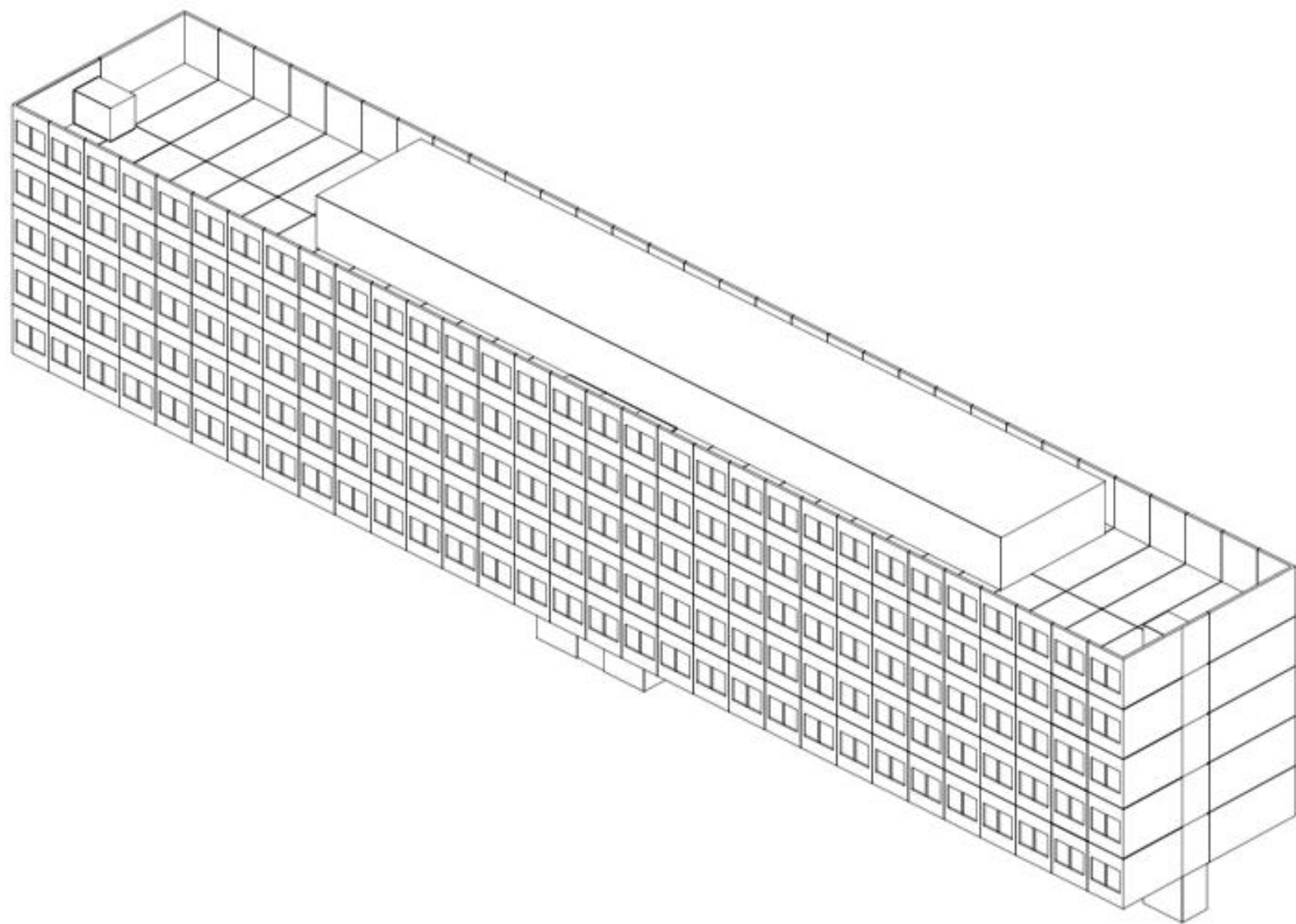


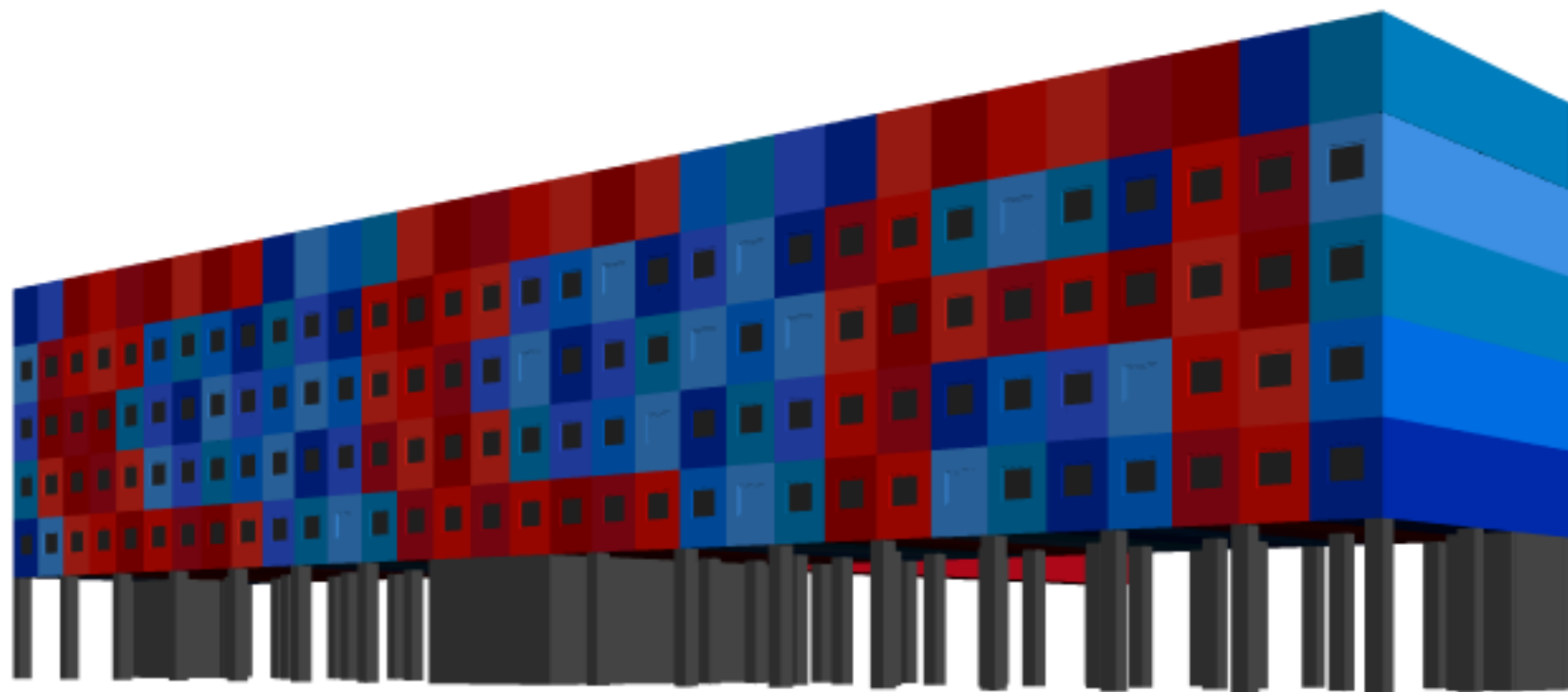












DE MEEUW BOUWSYSTEMEN BOUWT HIER
VUmc Cancer Center Amsterdam

De Meeuw, Obrecht en Zeeff

www.demeew.com / tel.nr. 0900-0498



TECHNISCHE
INSTALLATIES:



gti

G.T. Leunig Zuid
Schiedamsedijk 21
3061 KA Ouderswijk
011-5292626

GRONDWERK /
FUNDATIE:



HEIJMANS

Heijmans
Nijverheidsstraat 38
3860 BR Nijkerk
011-2455560

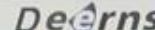
LABORATORIUM /
INRICHTING:



interflow

Interflow
De Wijk 15
1711 SP Wieringerwerf

COÖRDINATIE:



Deerns

Deerns
Fleetingaan 10
2288 CX Rijswijk
070-3957400

PROJECTBUREAU:



Zuidas

Deerns Coördinatie
Projectbureau Zuidas



De Meeuw
Obrecht en Zeeff



95160214



VUmc



Cancer Centre Amsterdam

Offices and Labs, 200m²
Amsterdam, Netherlands, 2005
Client: Cancer Centre Amsterdam

MVRDV





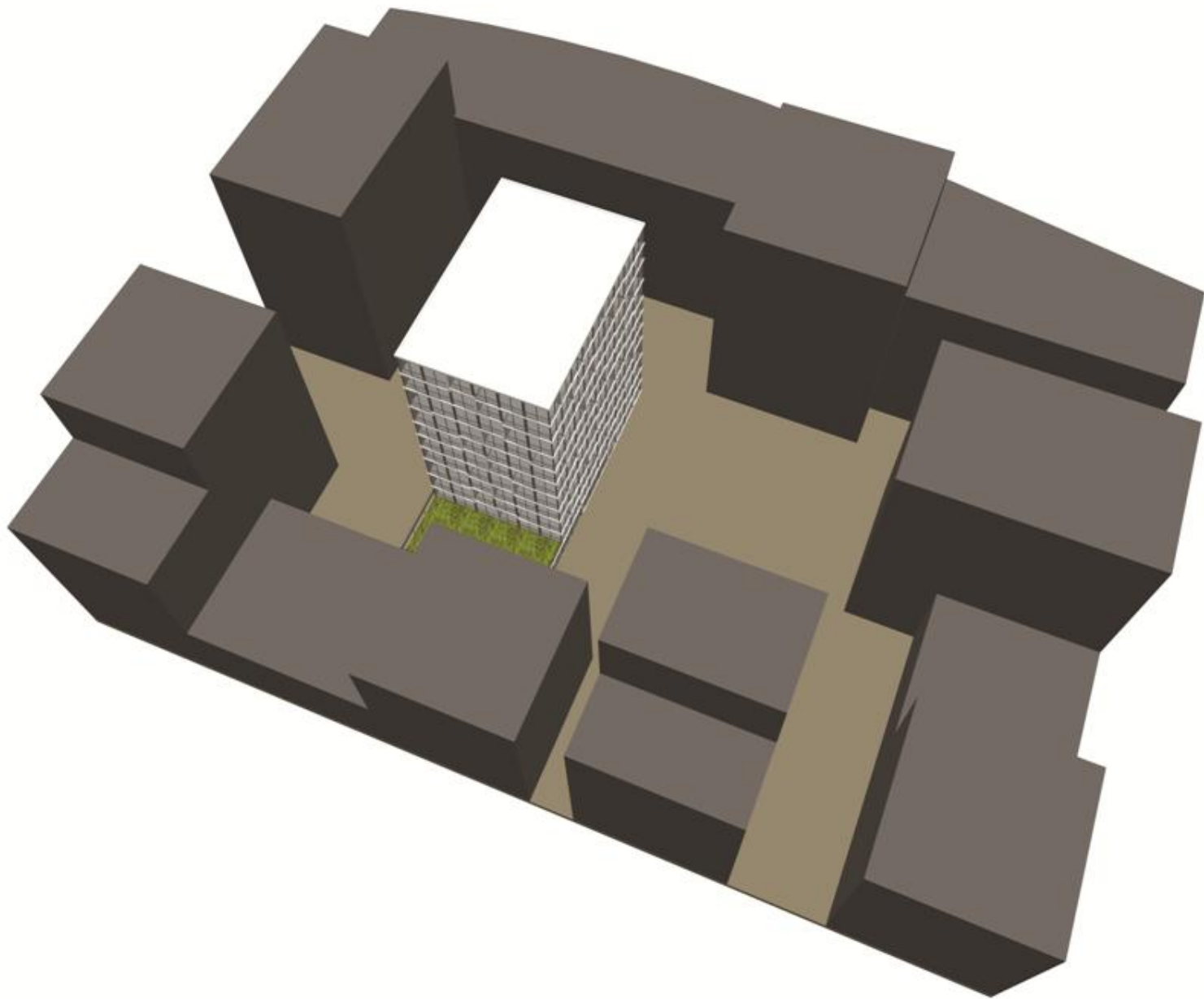


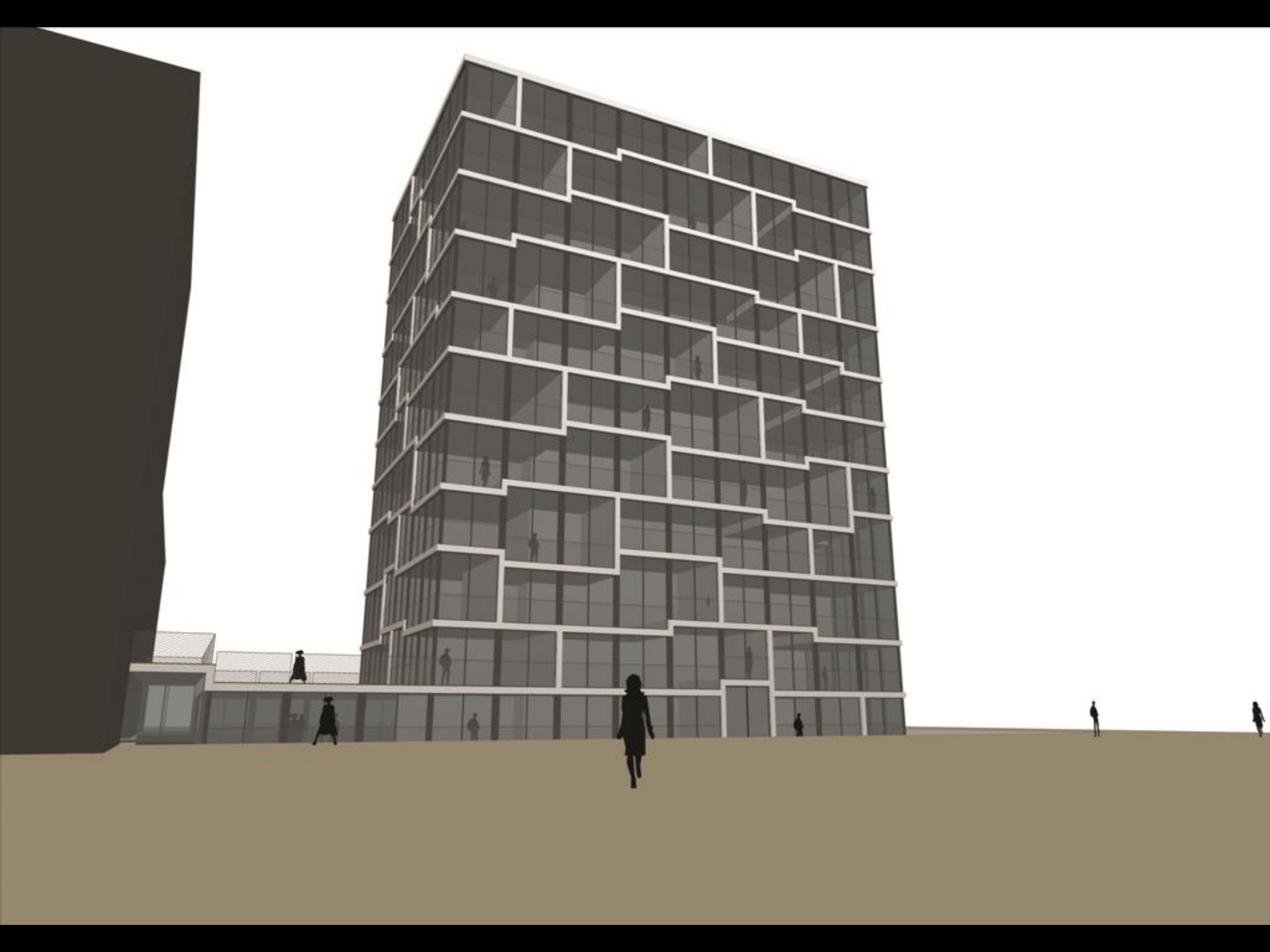
Studio Thonik

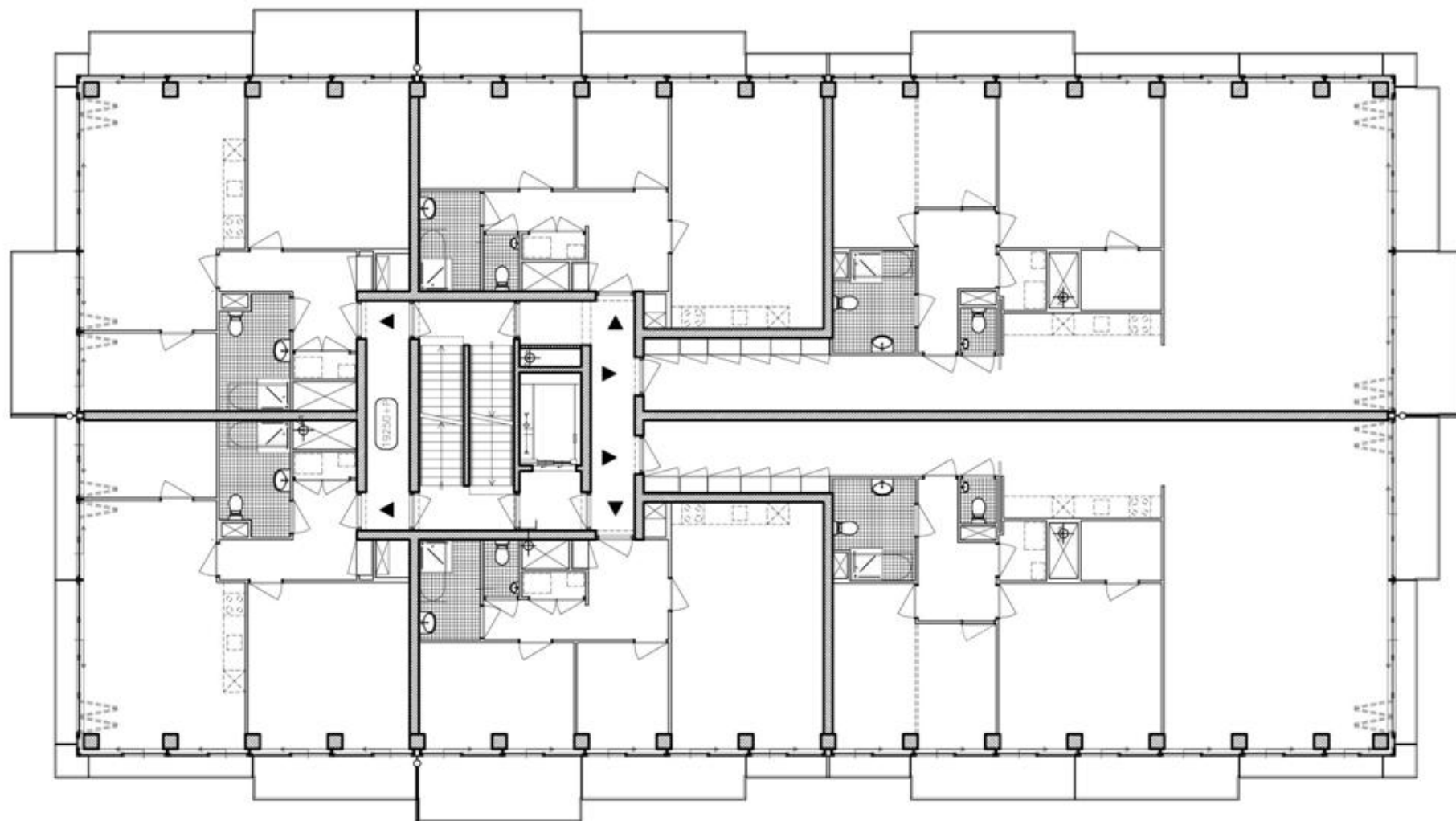
Ateliers and residence, 290 m2
Amsterdam, Netherlands, 2001
Client: Graphic Designers Thonik
Budget: 365.000 Euro

MVRDV

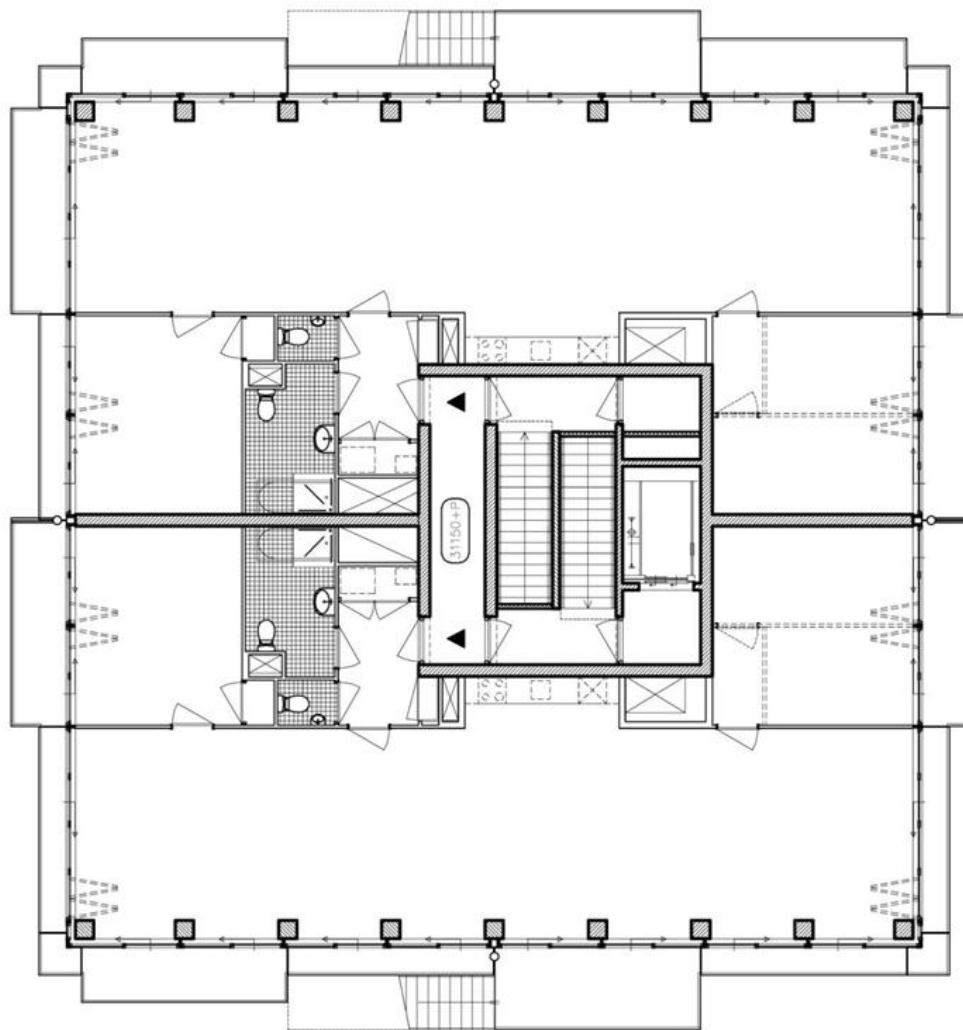








PLATTEGROND +6

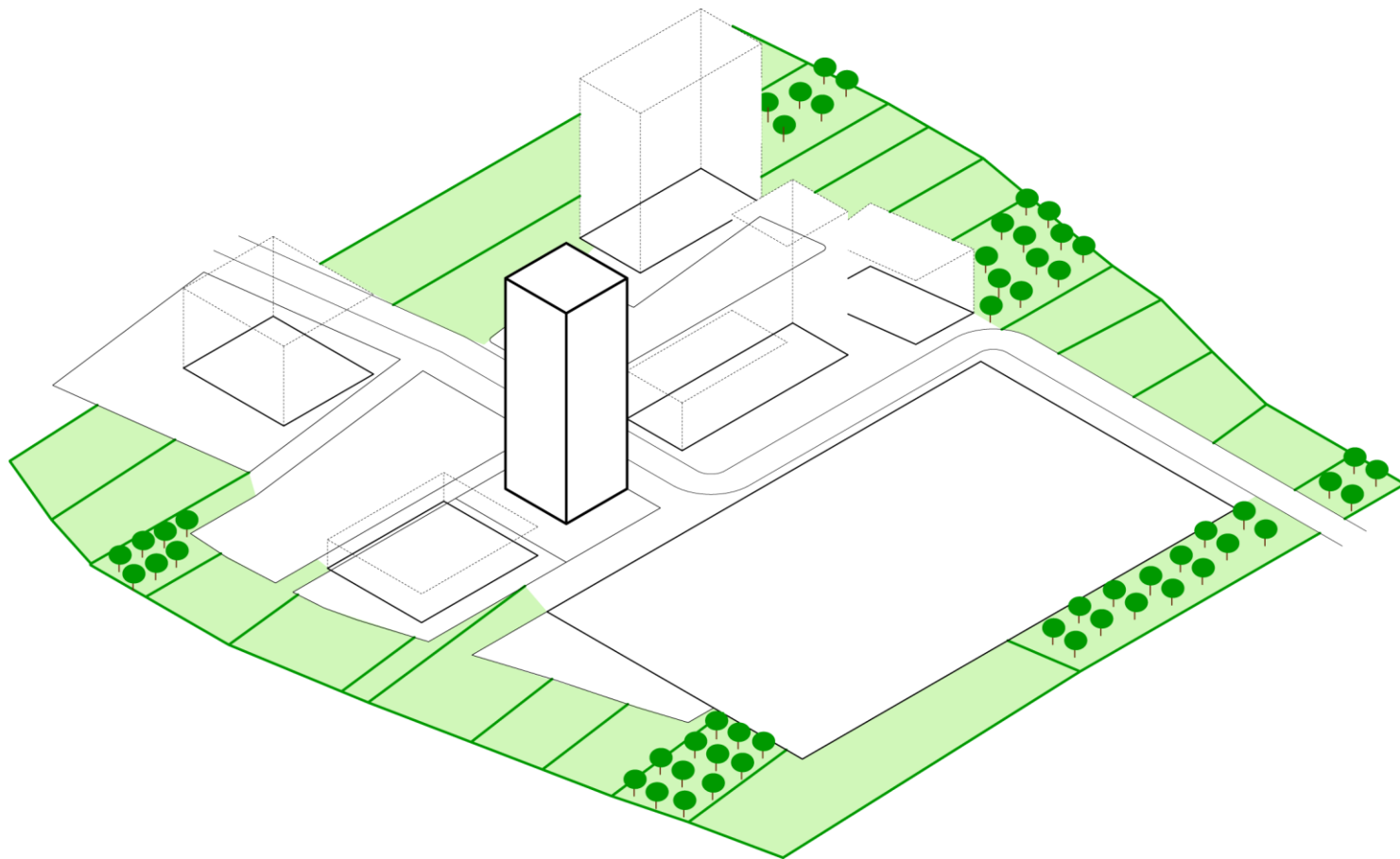




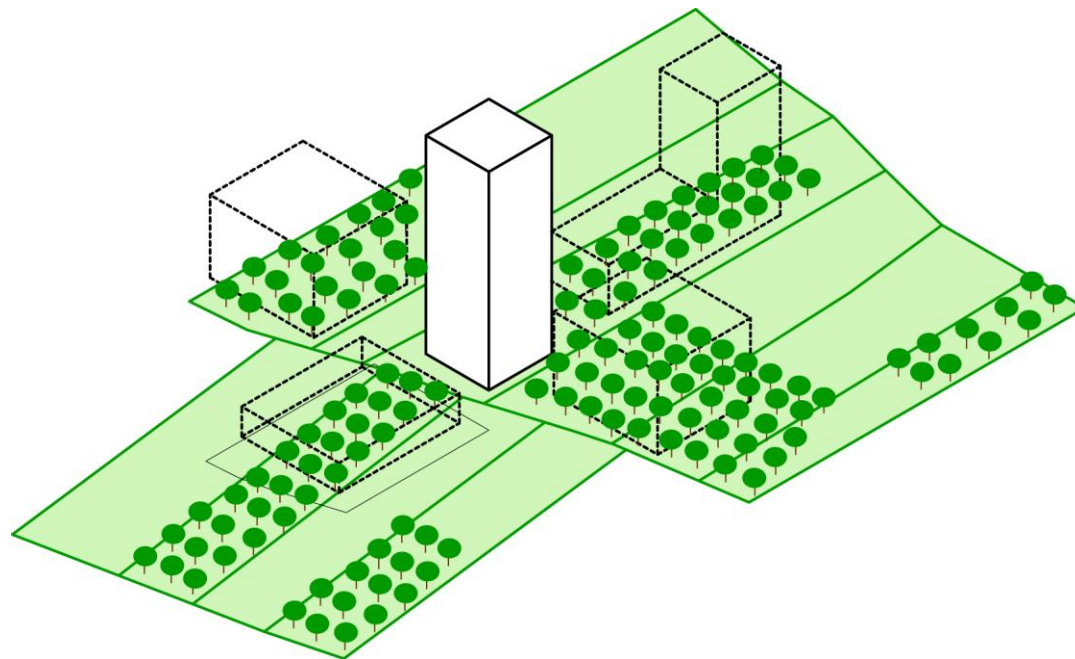


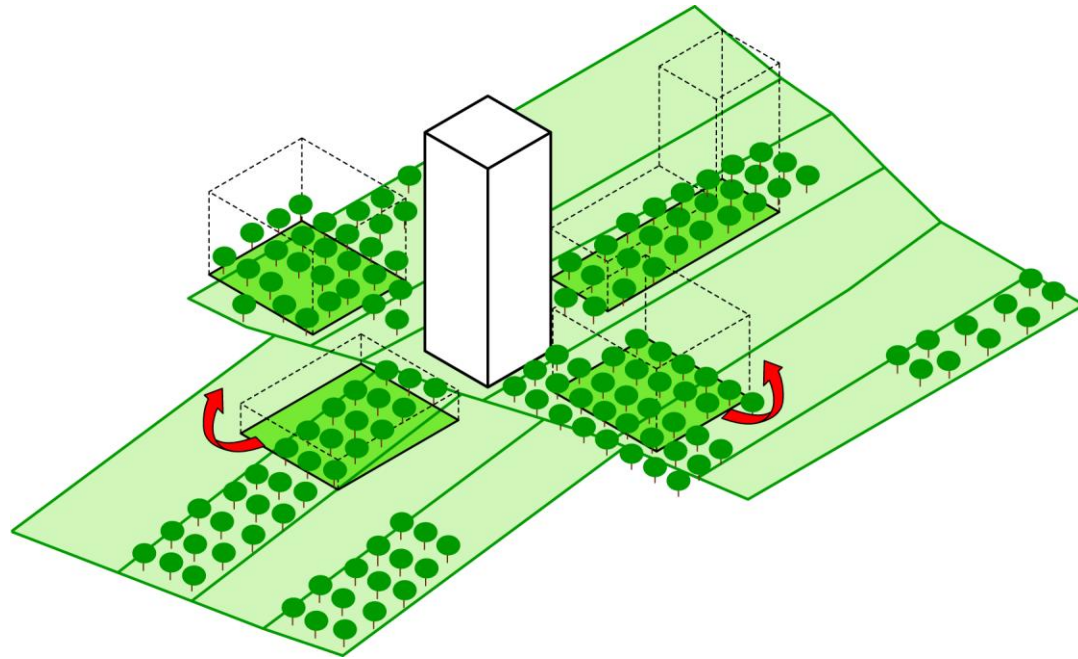


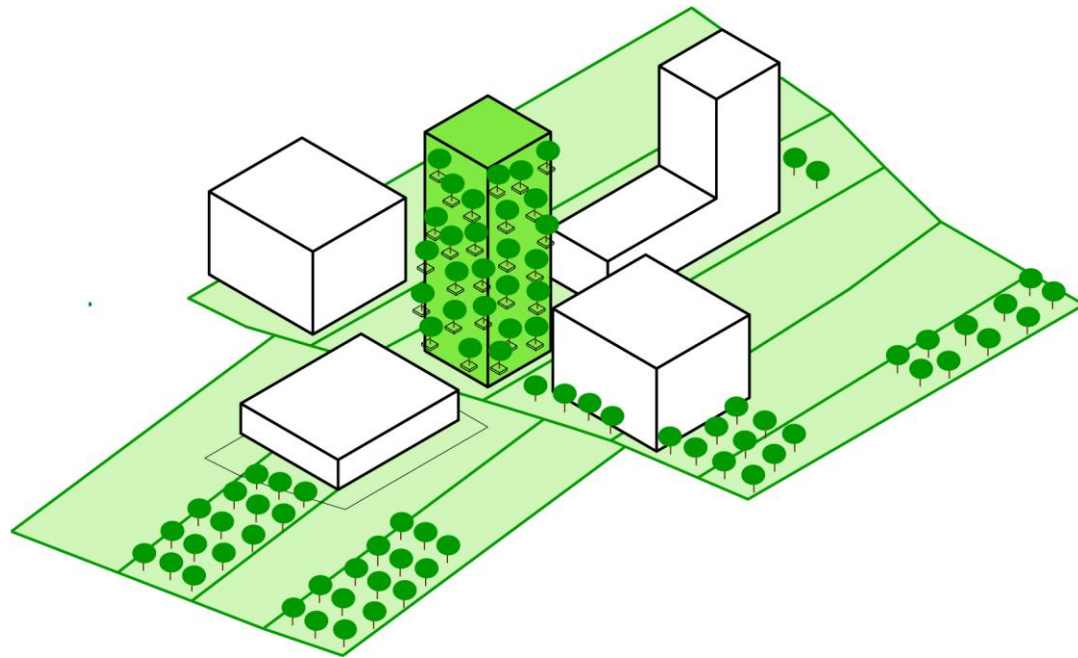


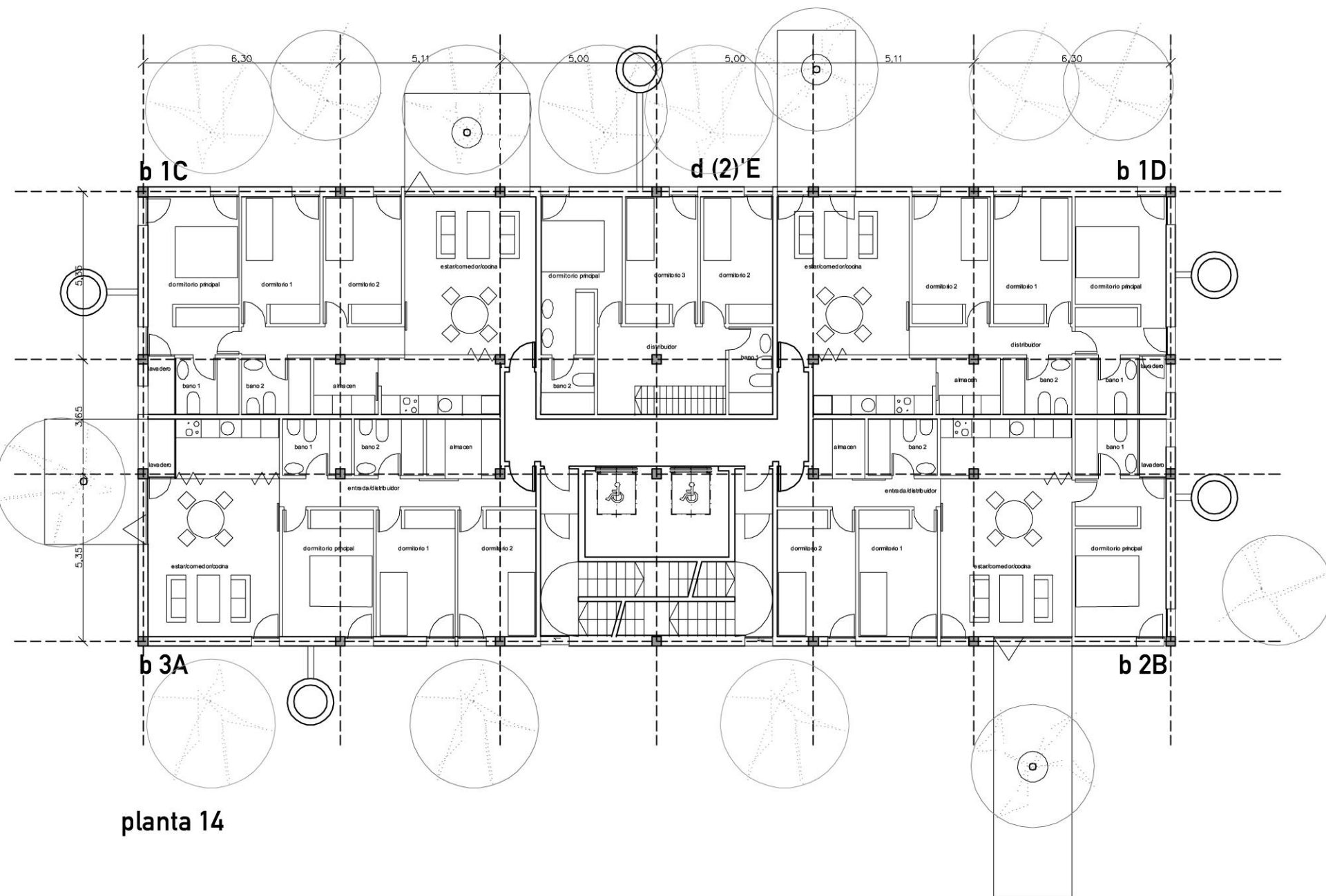


Nuevo barrio

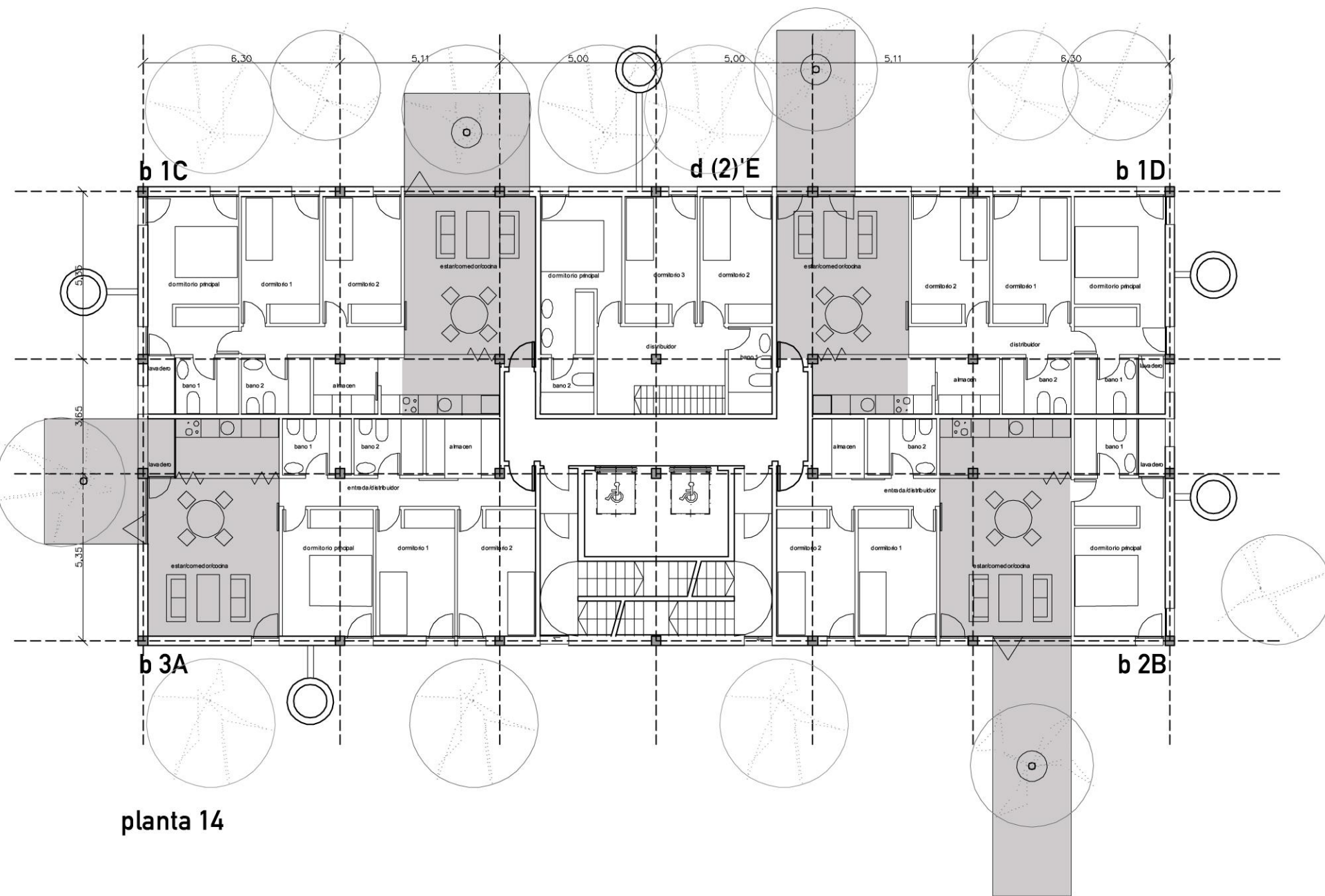


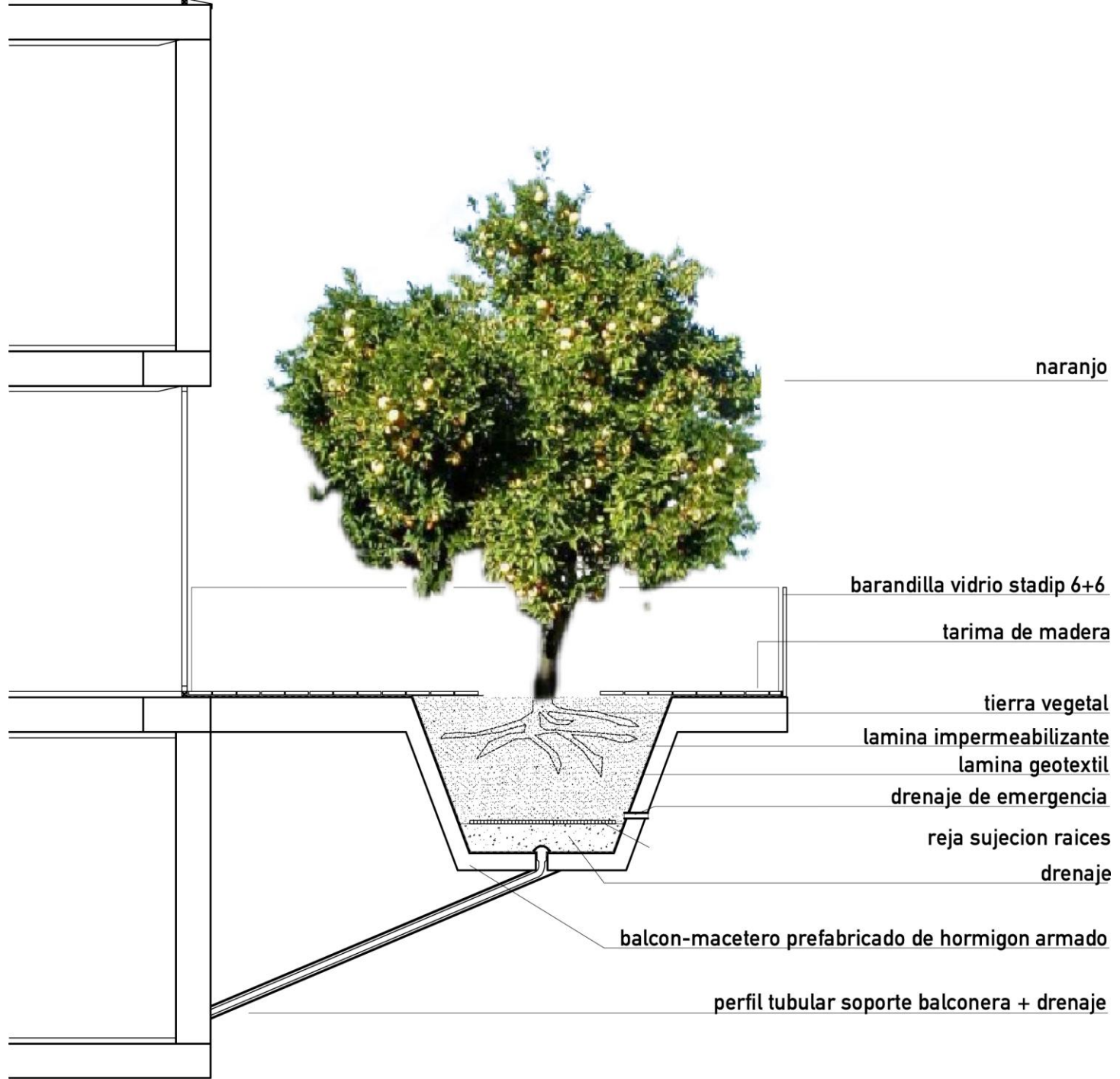






planta 14



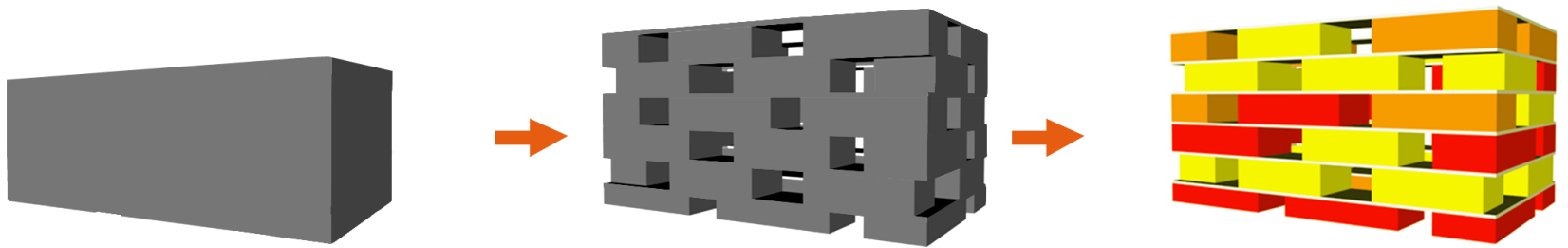








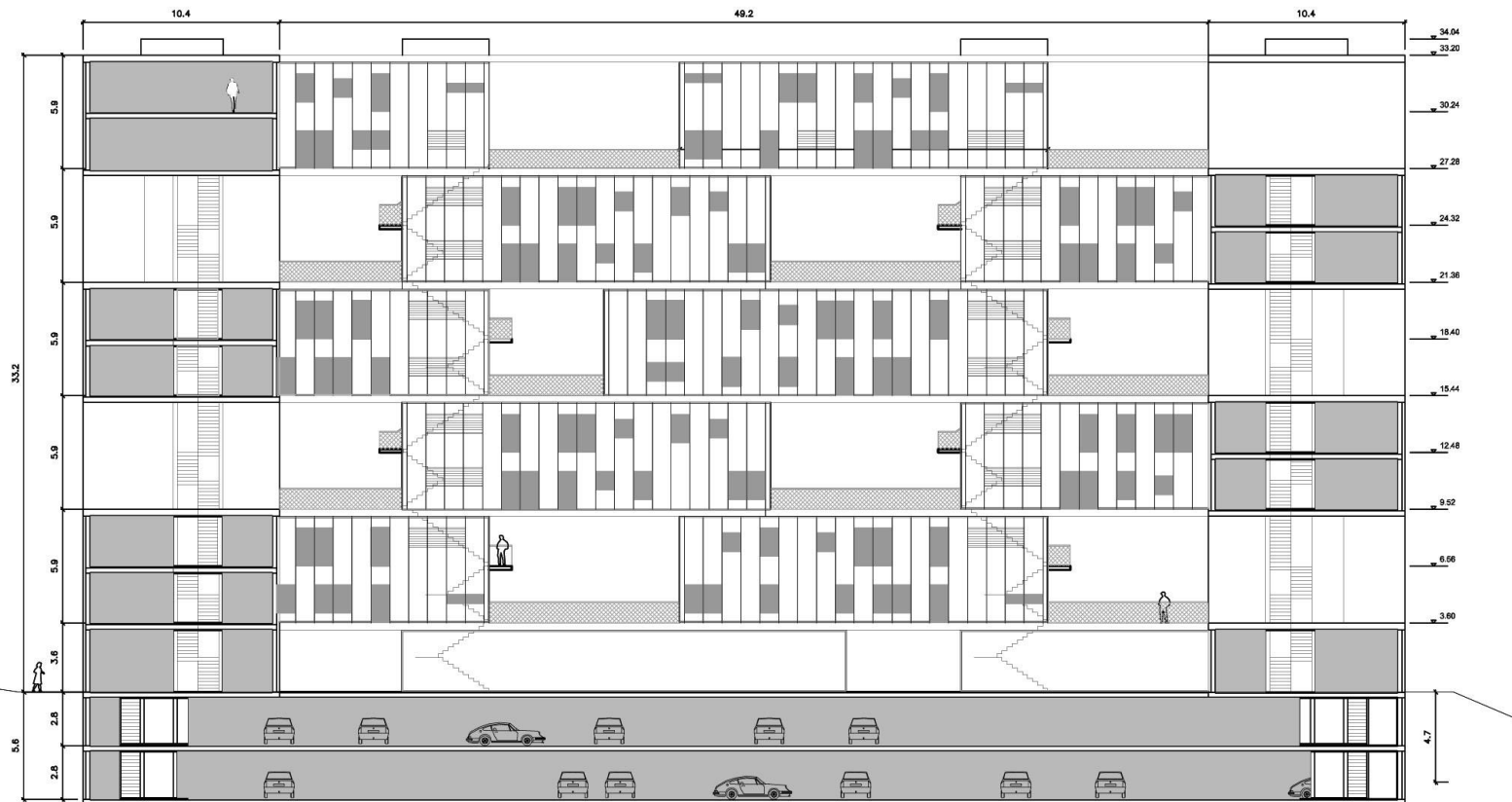




GENESIS CELOSIA PROJECT. SANCHINARRO, MADRID







CONCEPT



Ayuntamiento de Madrid
Comisión de Vivienda y Rehabilitación Urbana

Housing in Sanchinarro
project

TR-16 C

plot

longitudinal section 2

plan

19

plan number

TP 178 C

project number

Proyecto Básico

task

1:250

scale

04 February, 2003

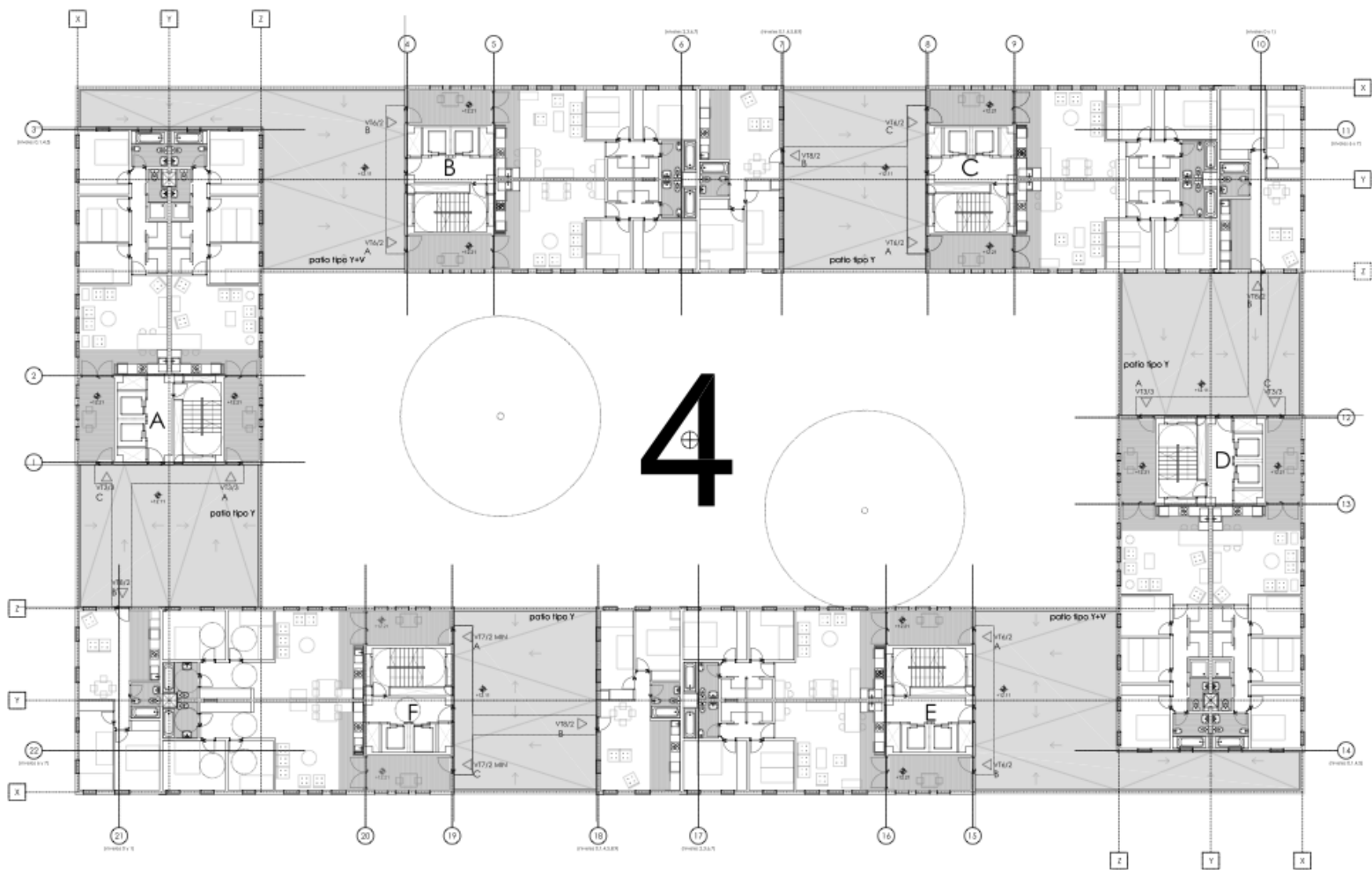
date

MVRDV
Architects

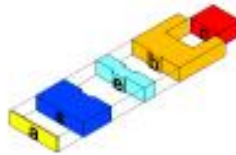
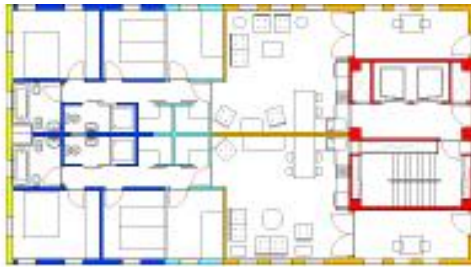
Dunantstraat 10
3024 HC Rotterdam NL
Tel: 31.10.4772860
Fax: 31.10.4773627

Blanca Lleó
Doctora Arquitecta

Humera 37, bajo
28023 Madrid E
Tel - Fax: 91.740.03.80

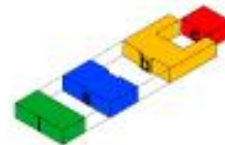






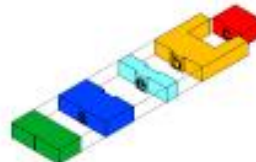
base 20.22m x 11.25m
(16 unidades)

base
16 unidades



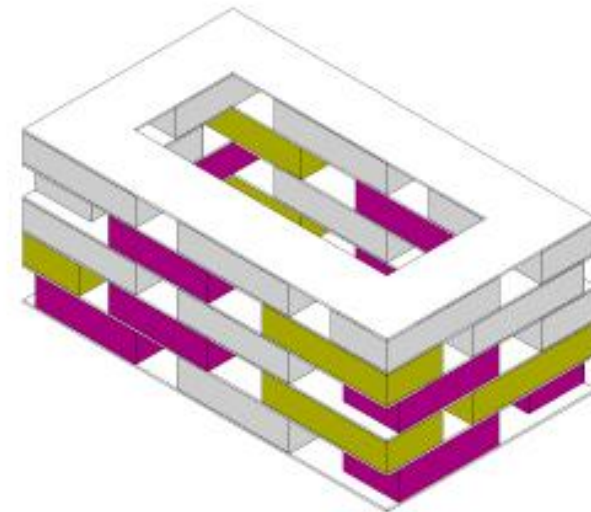
bis 22.72m x 11.25m
(26 unidades)

bis
26 unidades



bise 25.22m x 11.25m
(12 unidades)

bise
12 unidades





VT6/2

VT6/2







A photograph of a multi-story concrete building under construction. The building features several rectangular window openings, some of which are covered with red safety mesh. A tall, silver metal scaffolding structure is positioned against the right side of the building. Various material samples are attached to the concrete walls, including a vertical strip of three colored panels (grey, blue, and light blue) on the upper left, and several rectangular panels of different shades of grey and white on the lower left. The text labels are overlaid on the image, identifying these materials. The overall scene is a construction site with visible concrete textures and structural elements.

betec 1

betec 2

betec 3

ambar

tecmadry

basf







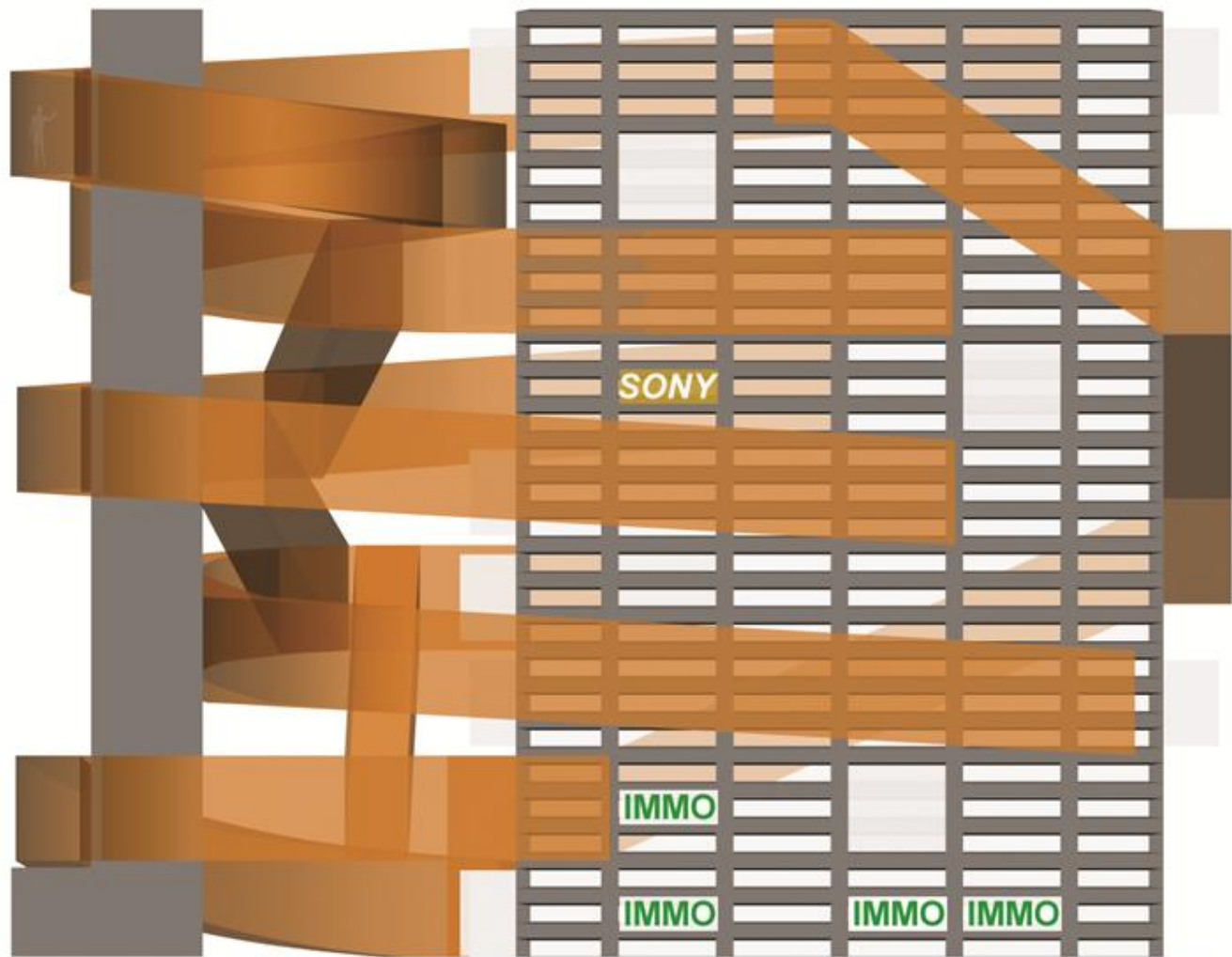


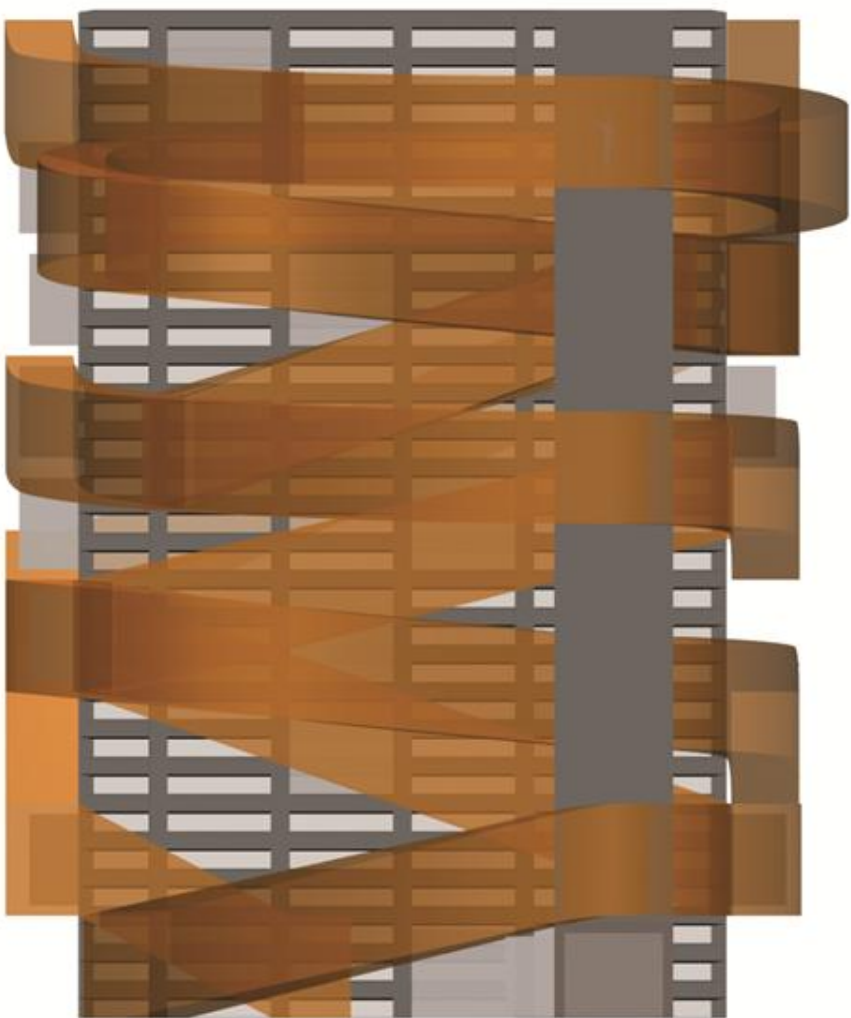


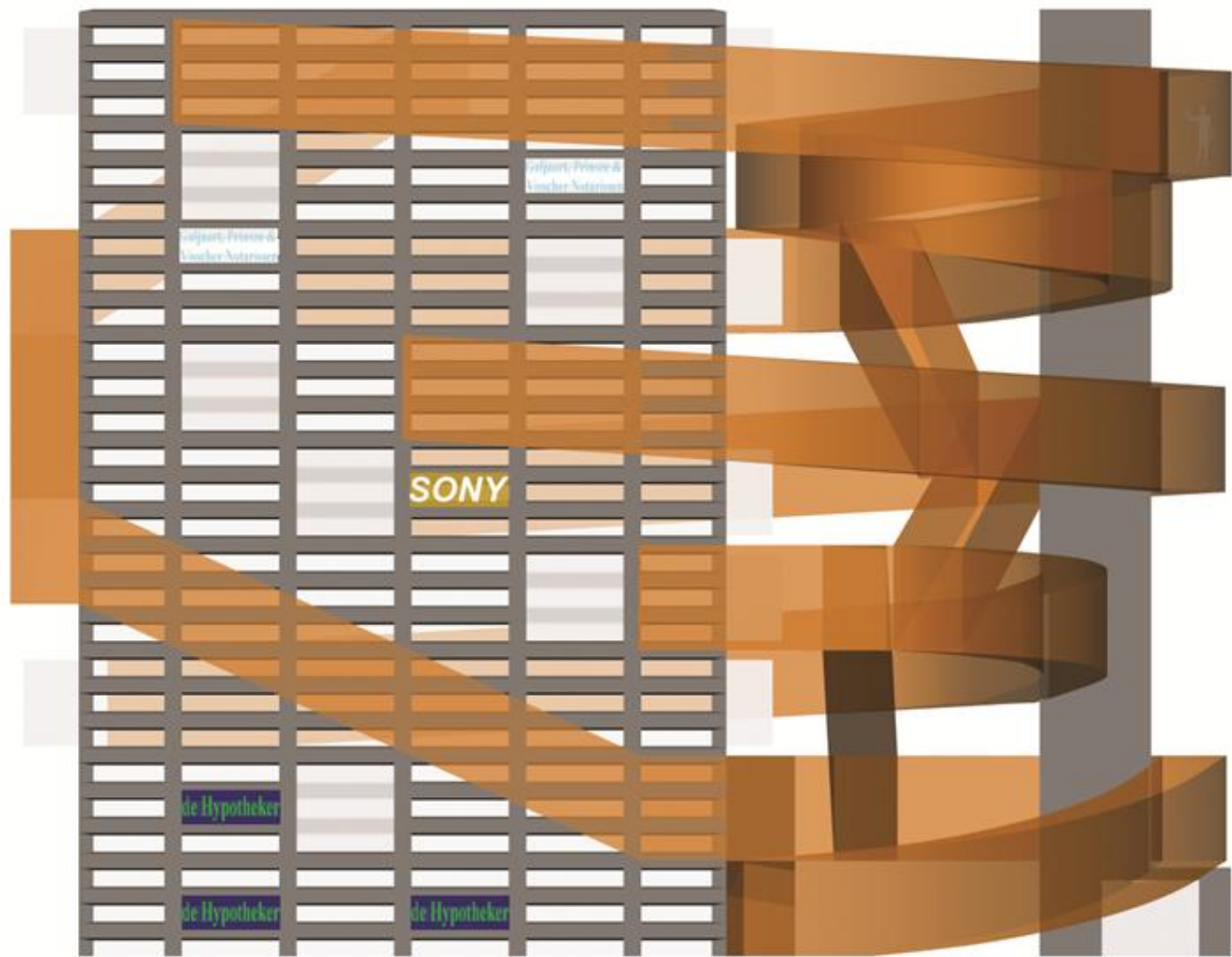


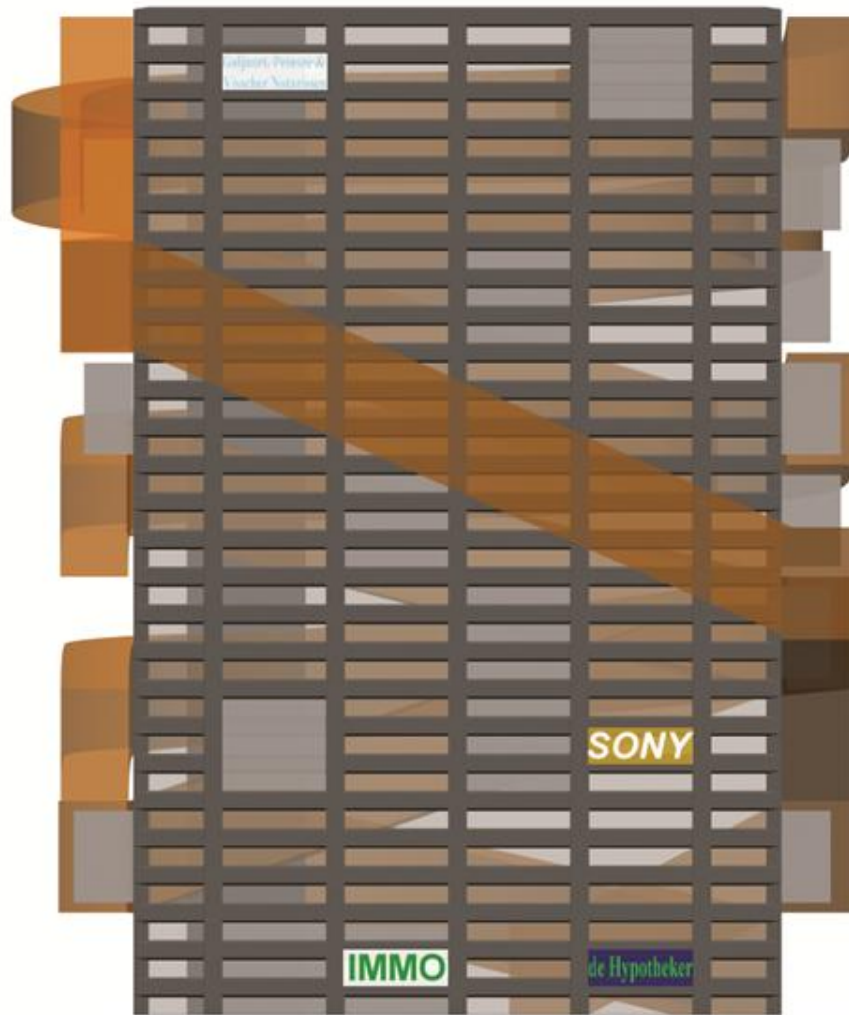


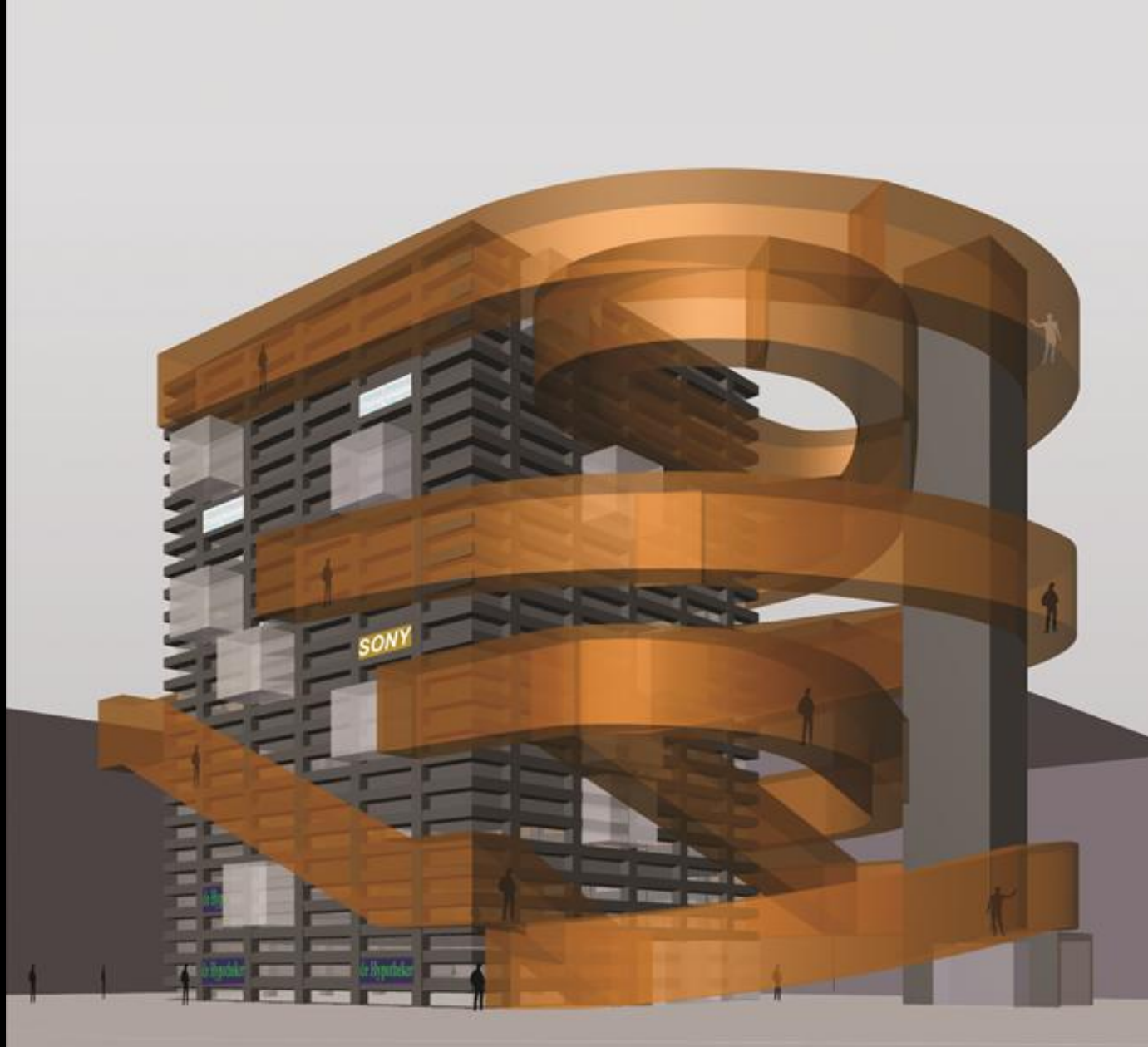






























DIDDEN VILLAGE











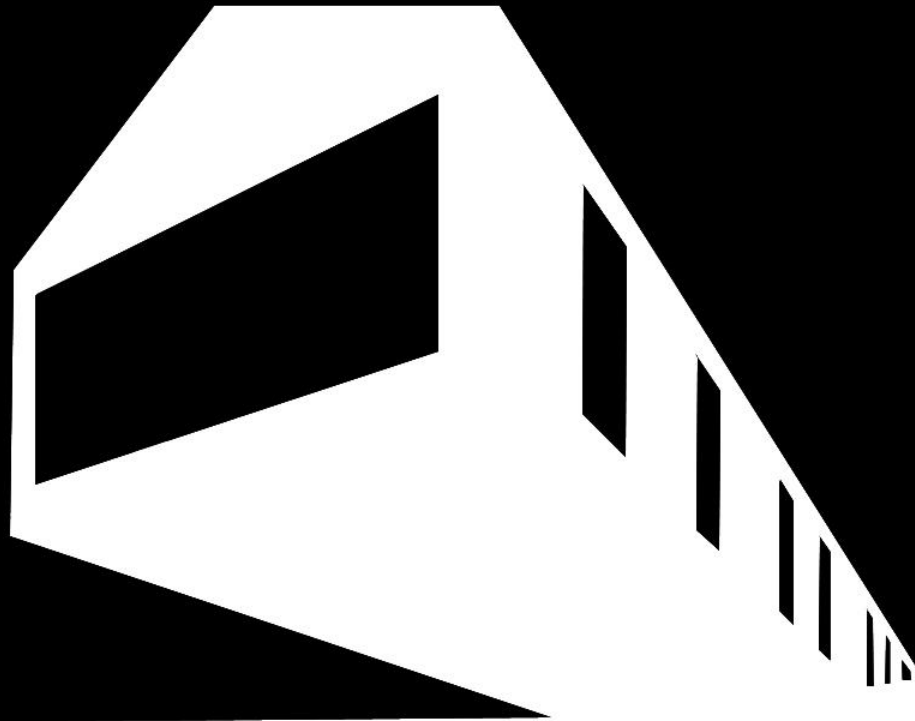












BALANCING BARN

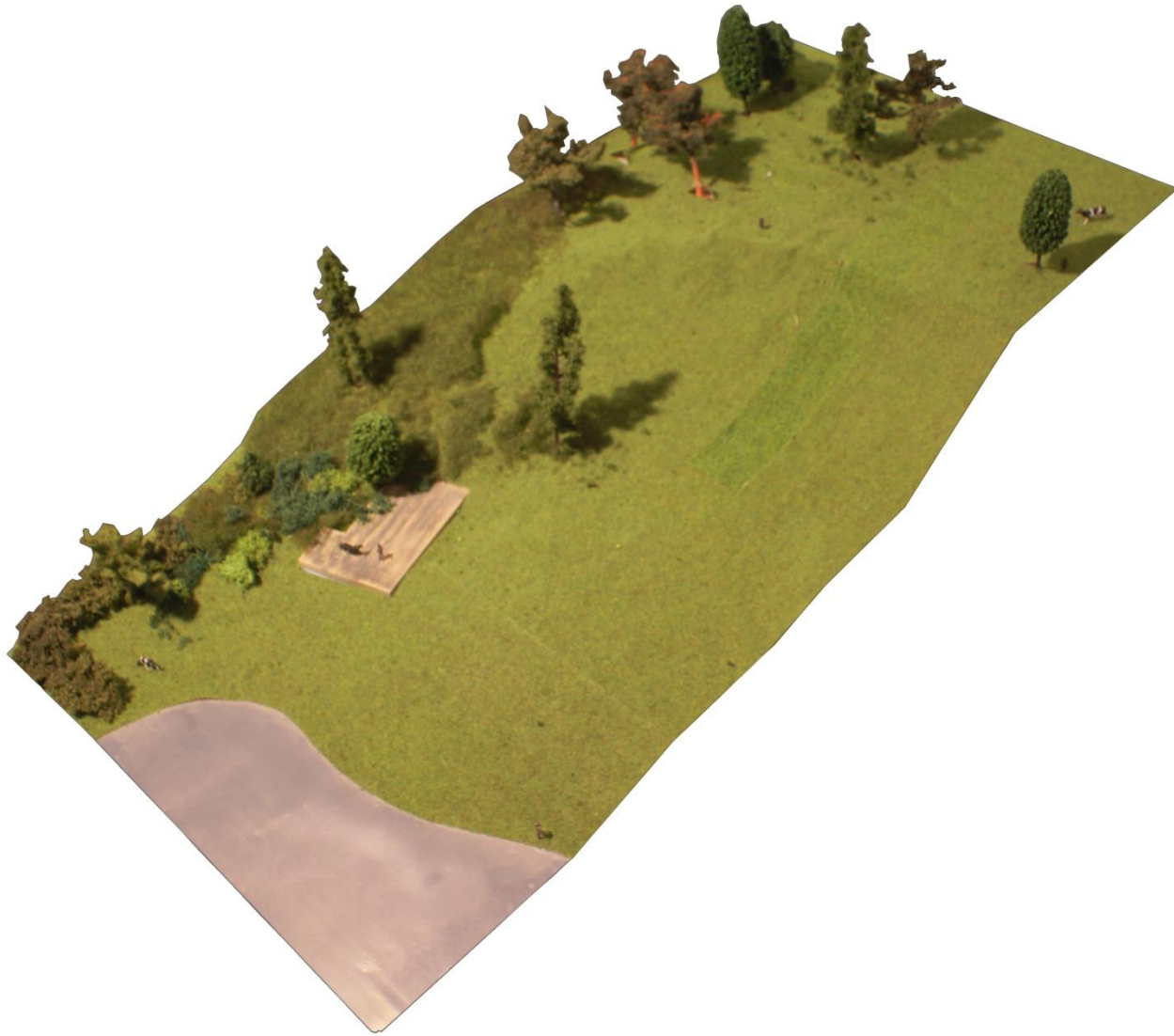
MVRDV
090919

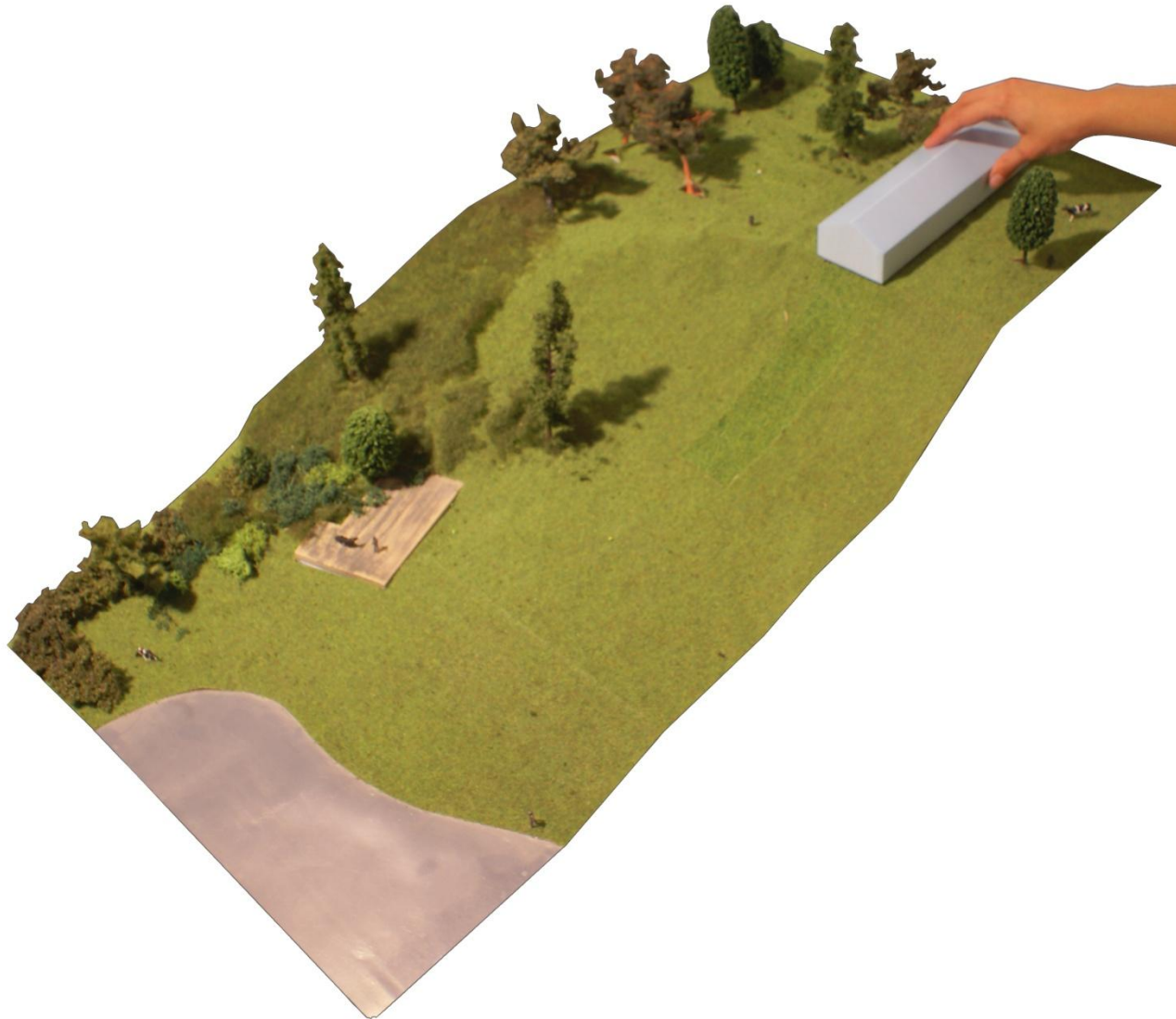


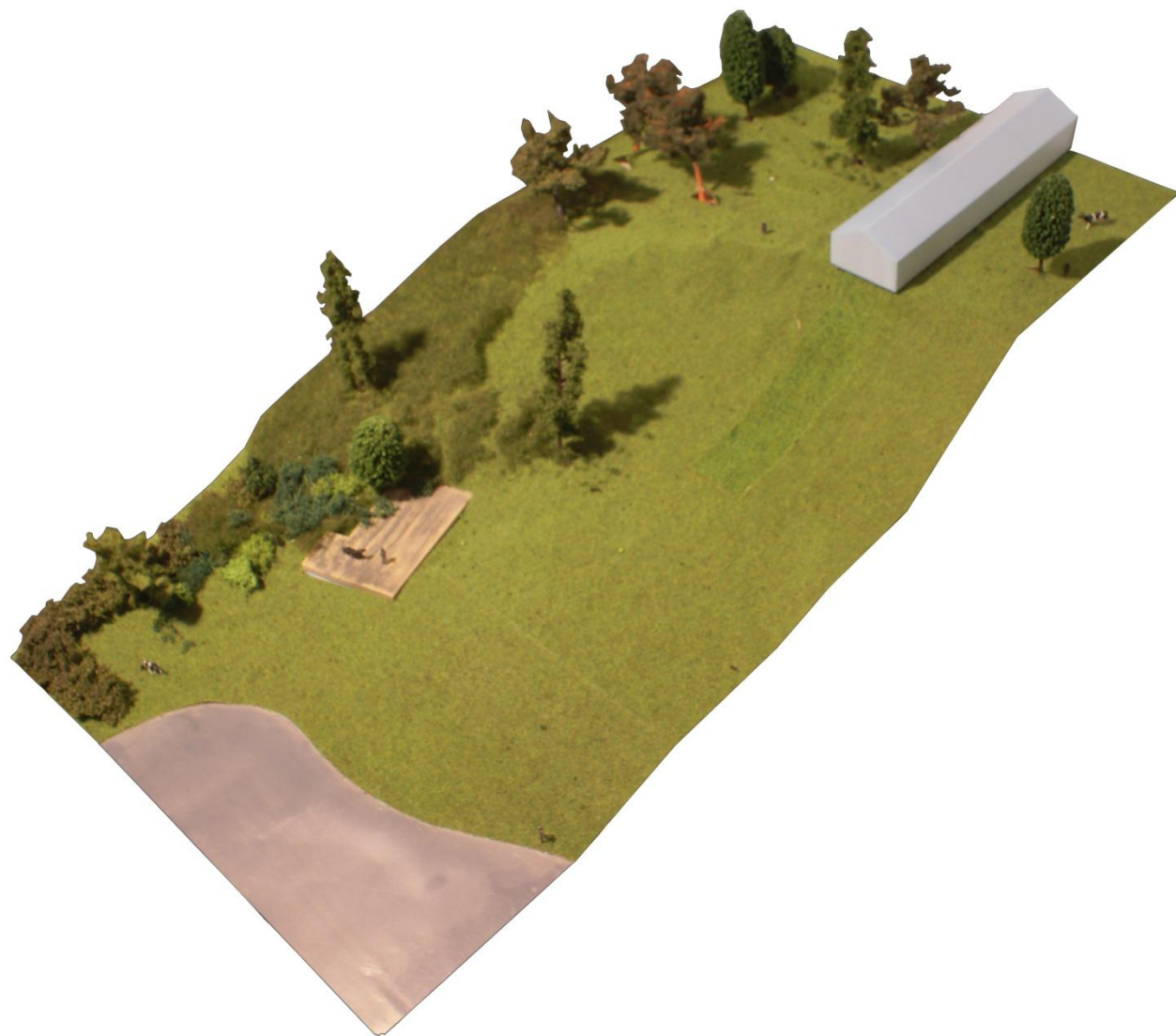


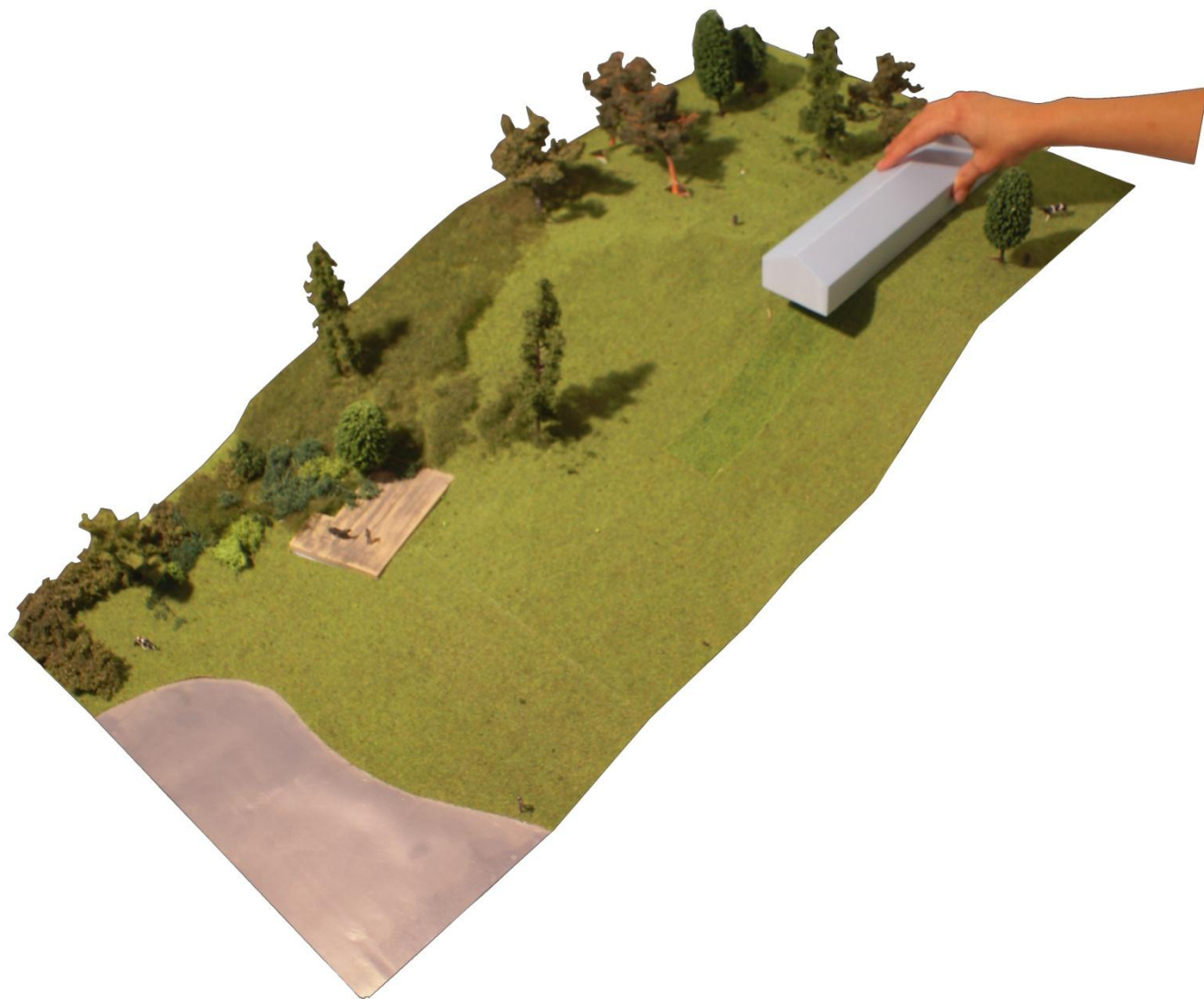


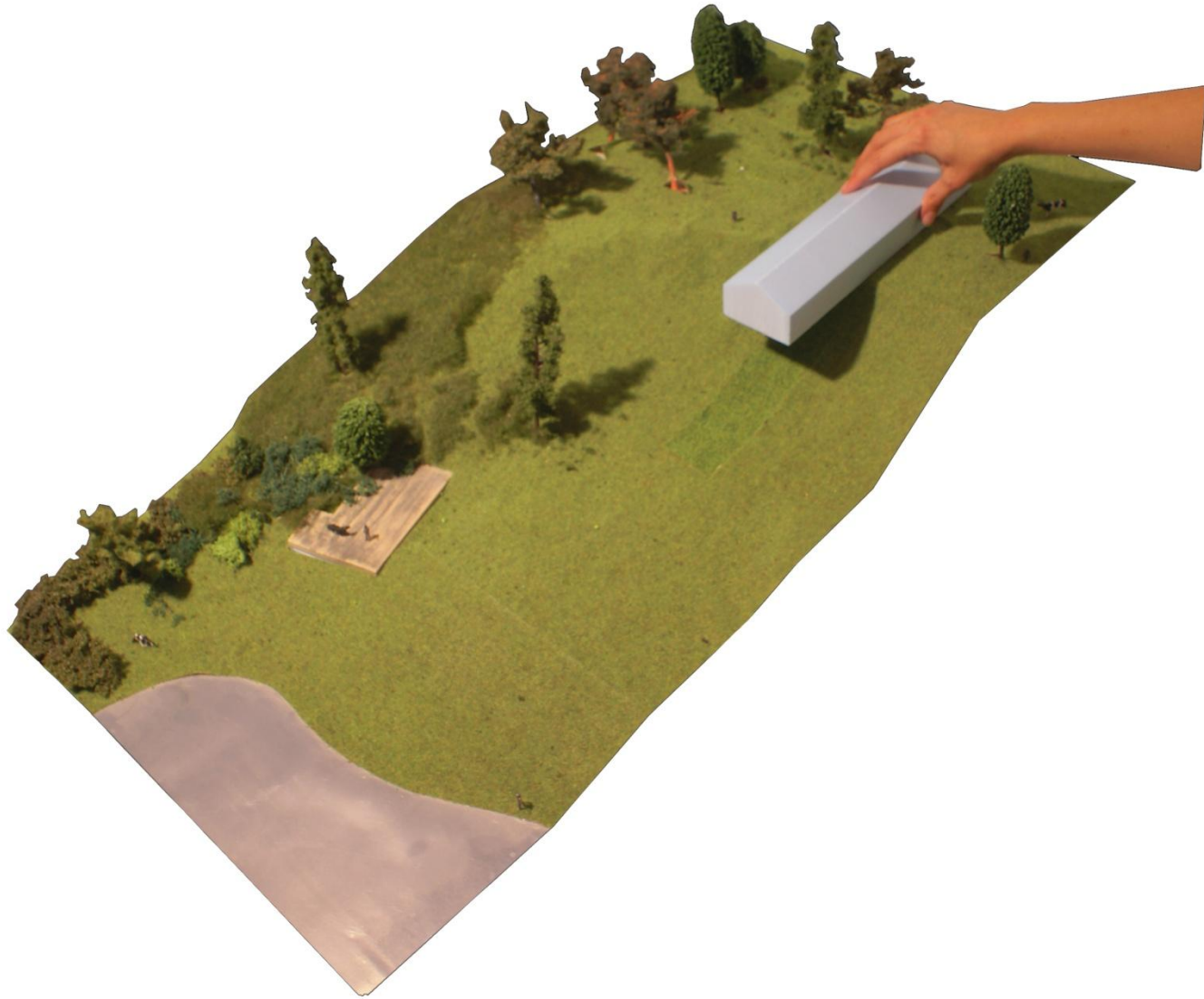


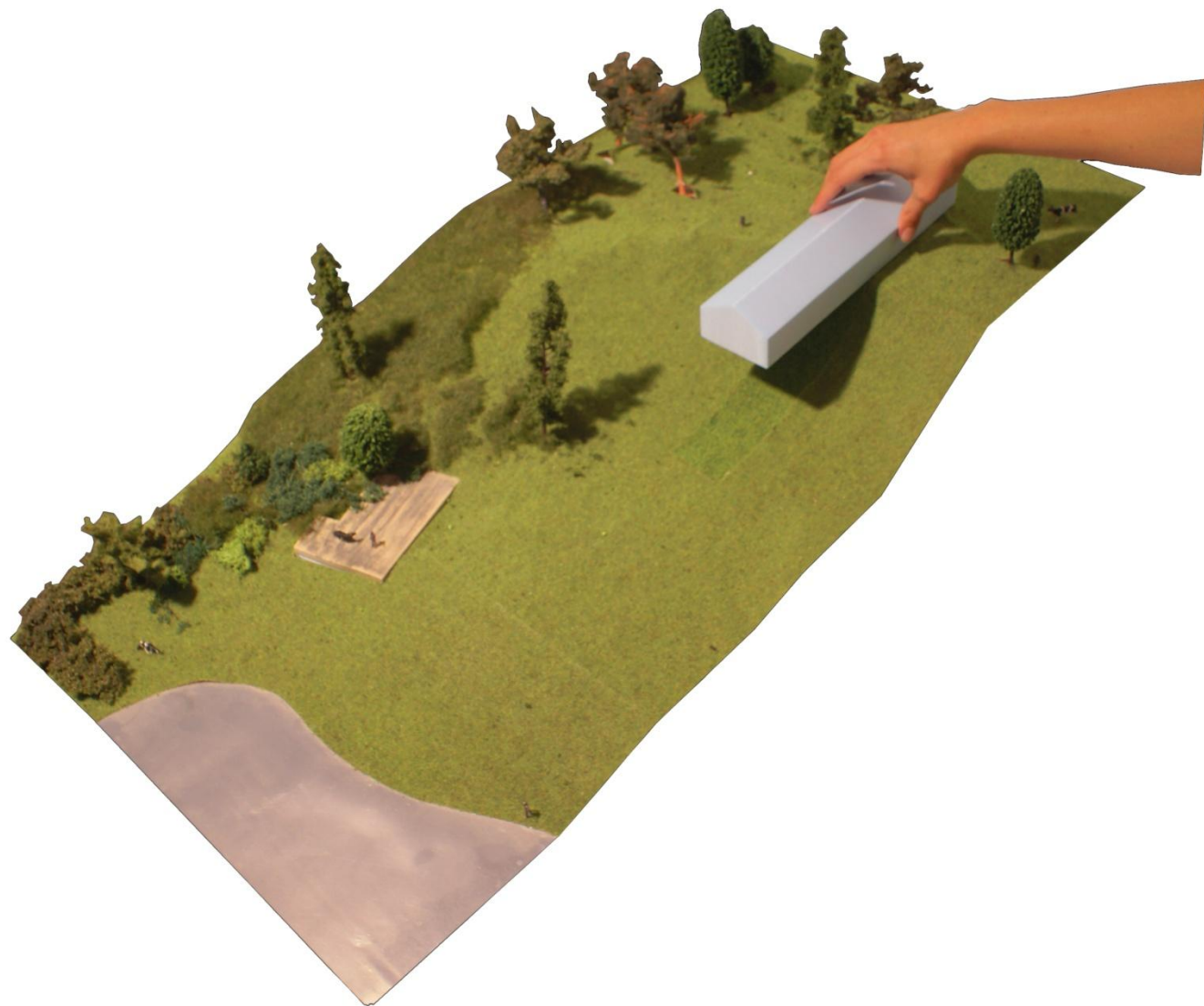


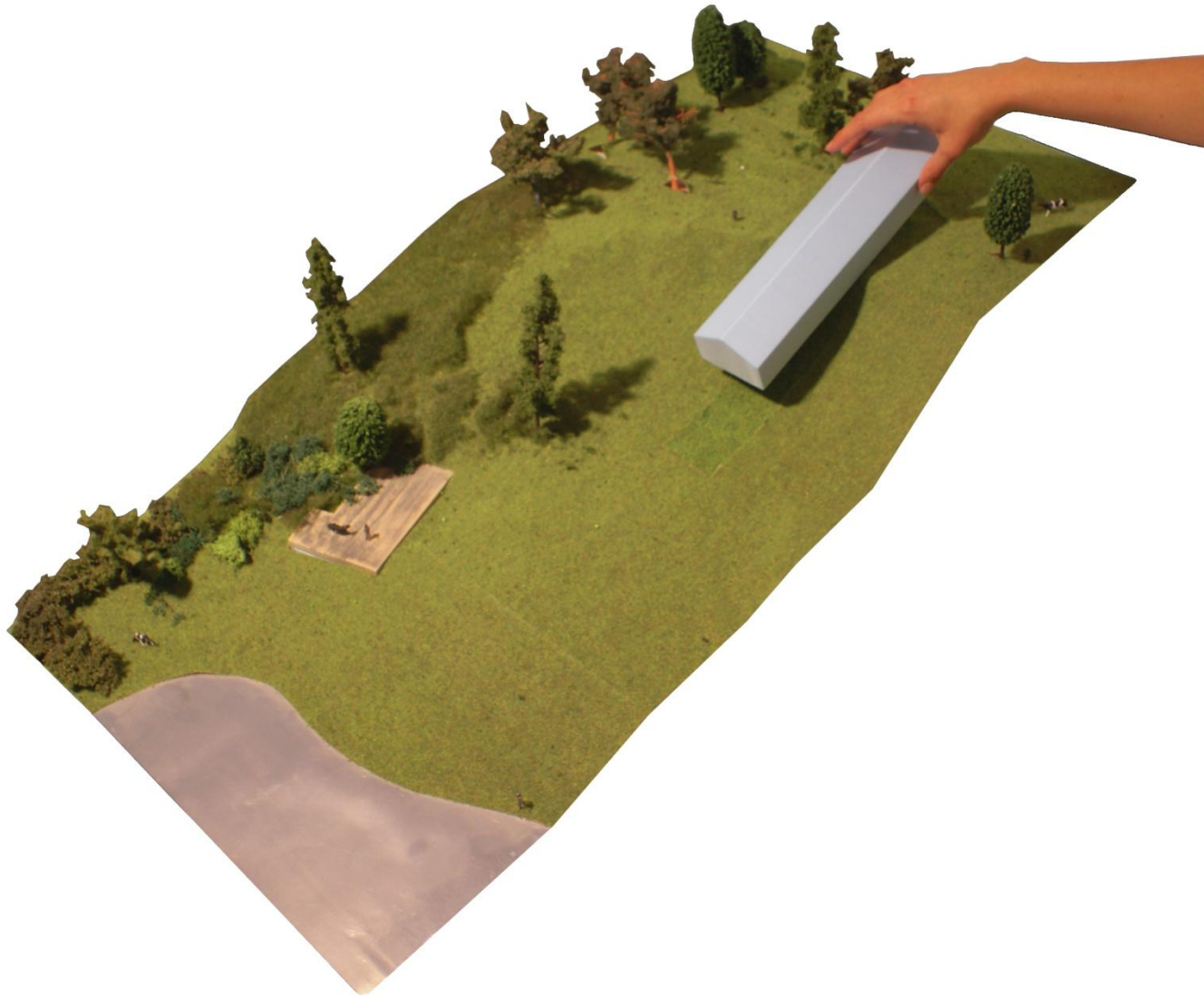


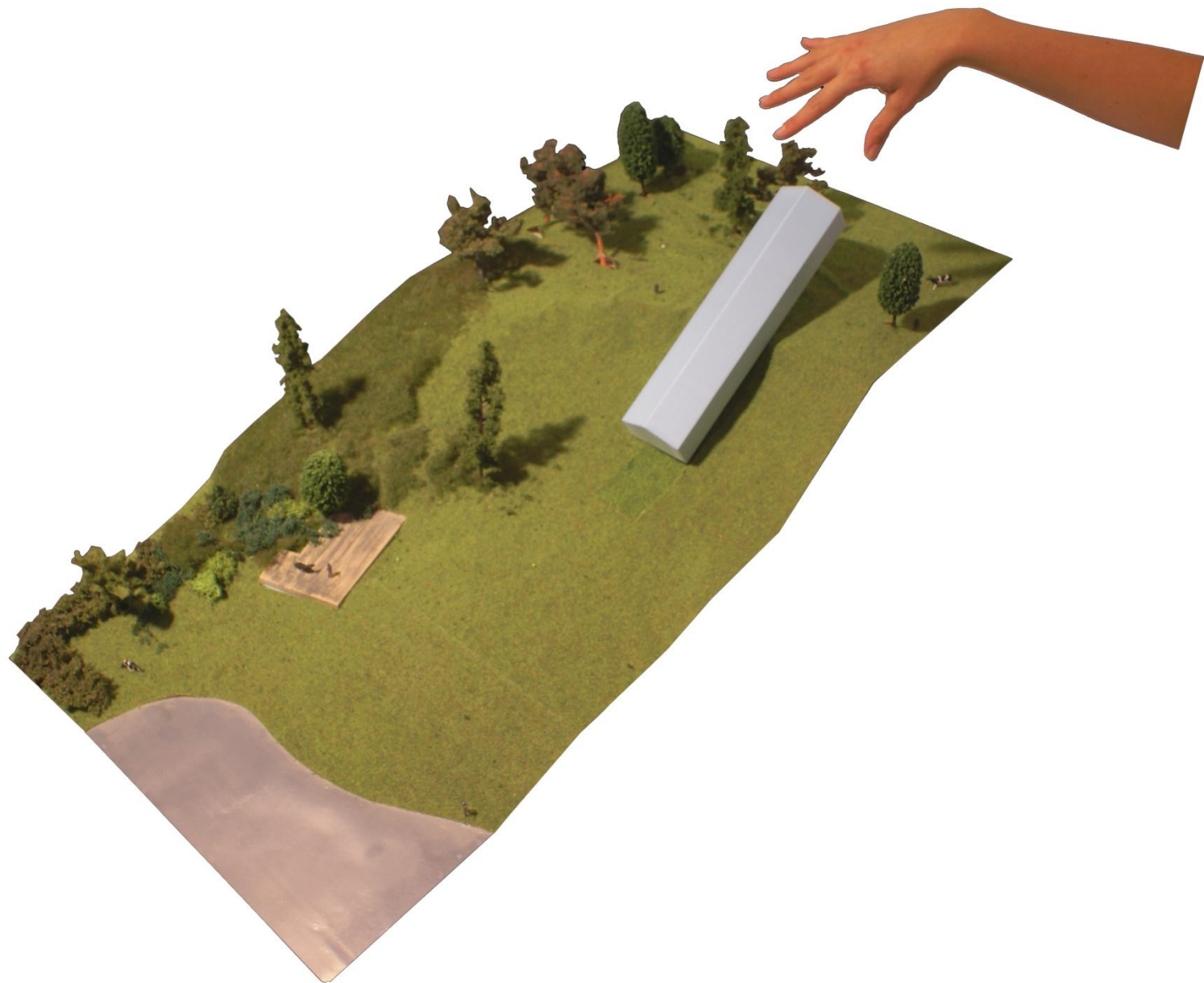


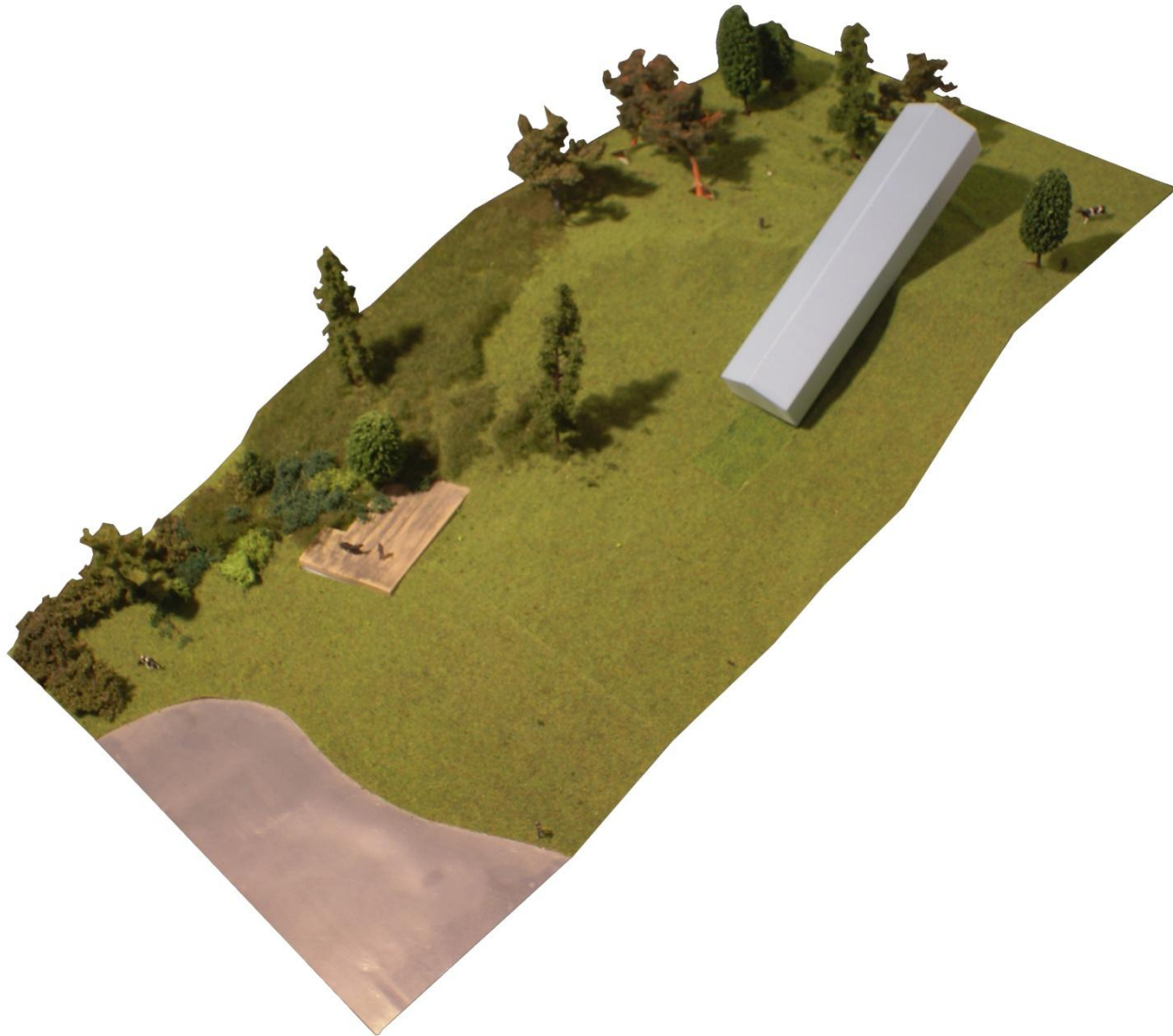


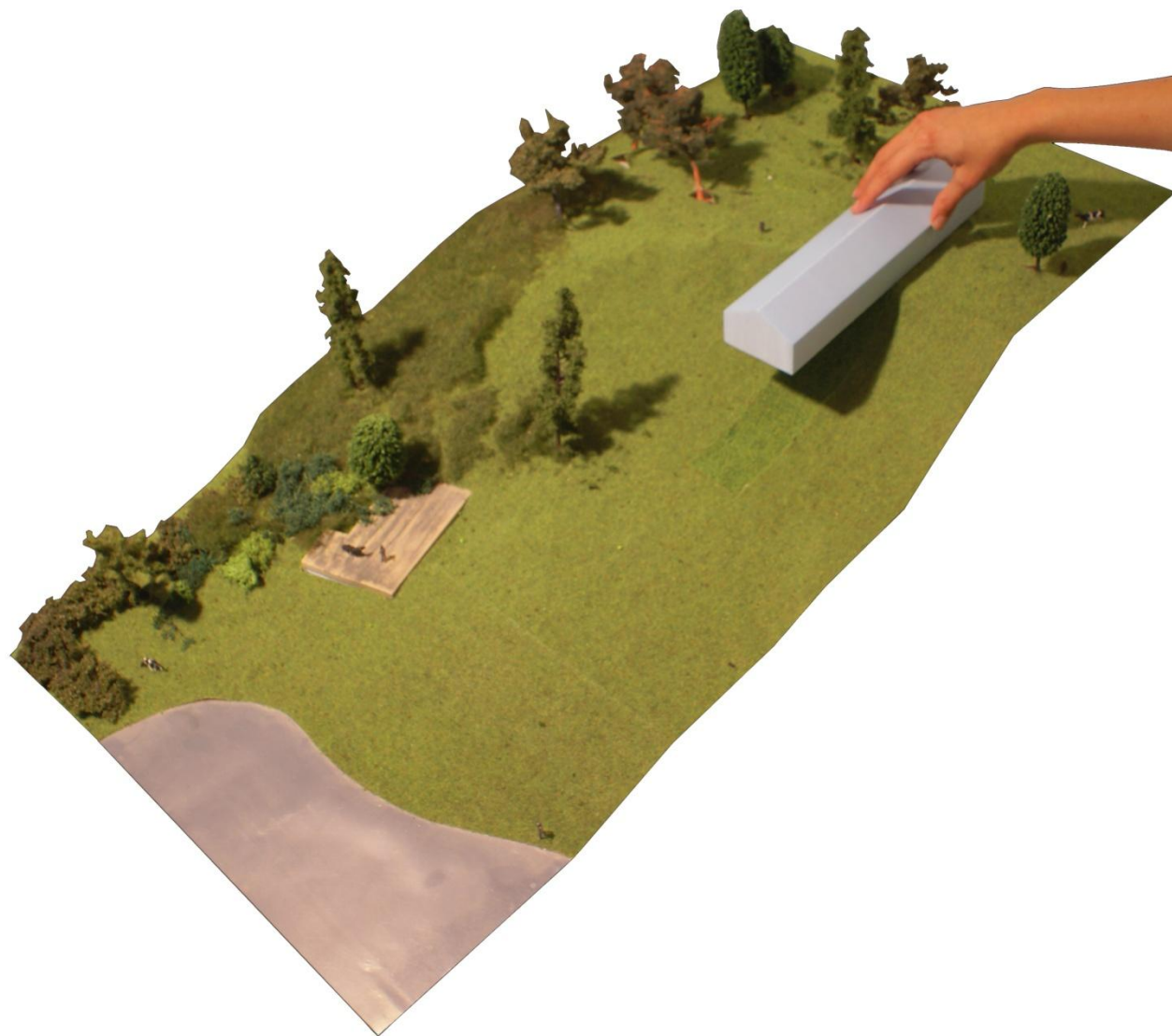


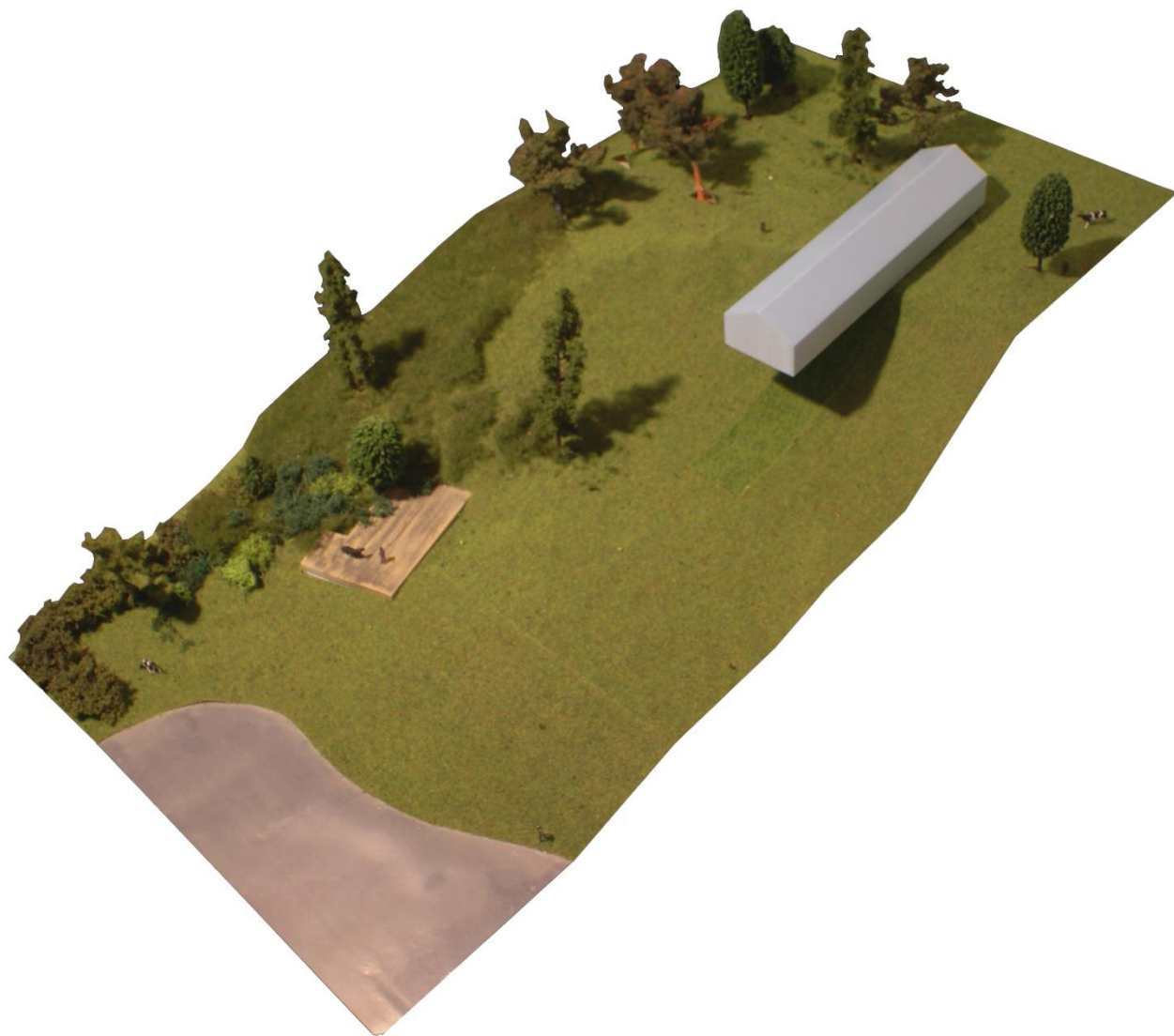














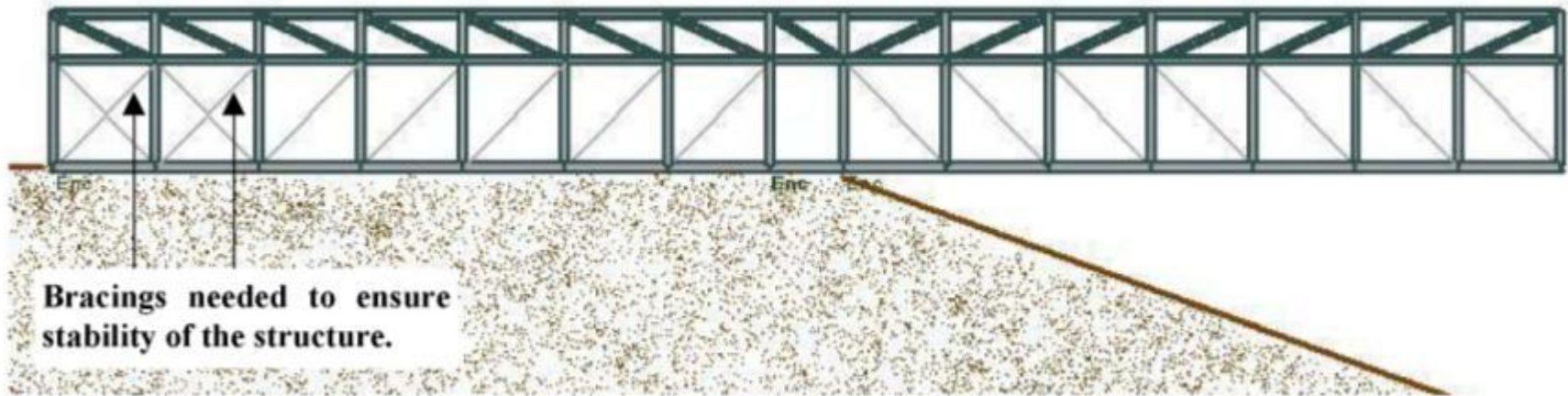


Figure 4: General Arrangement of the Structure, view 1

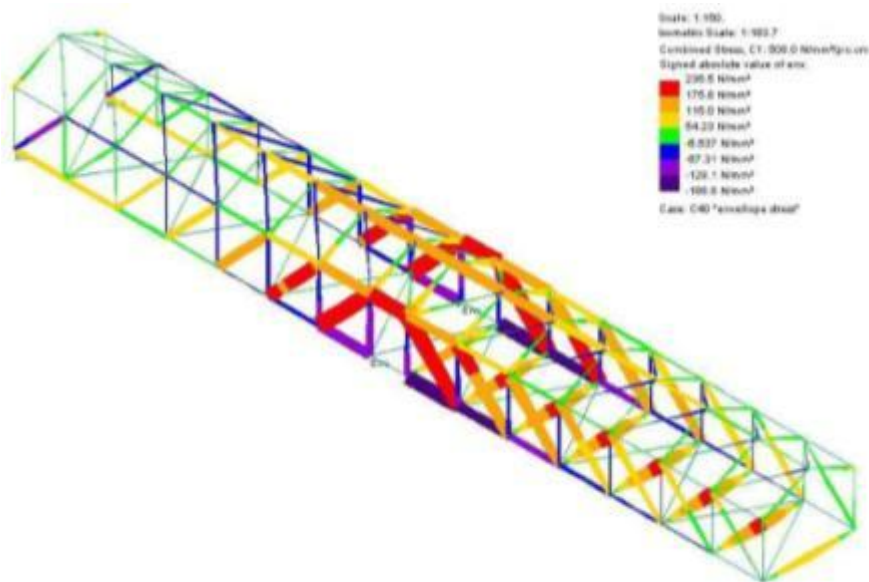


Figure 7: Ultimate Stress for Option 1

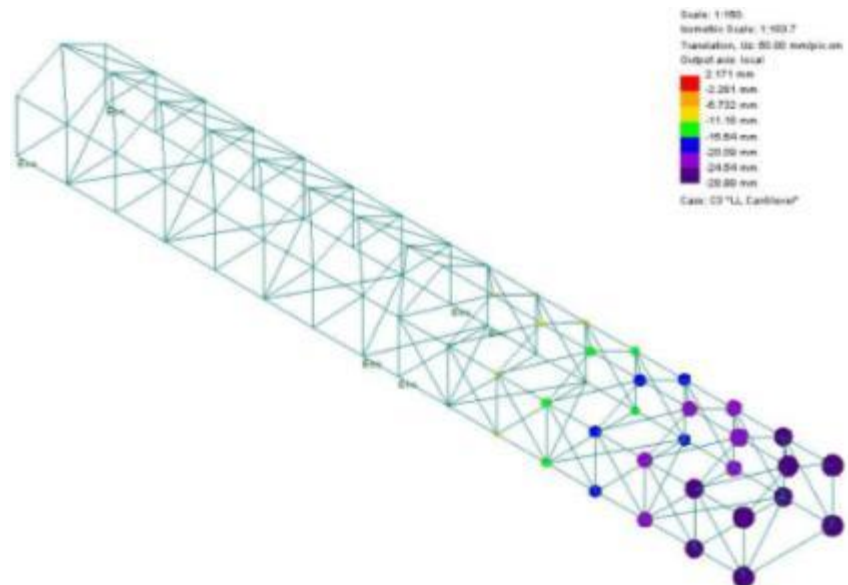
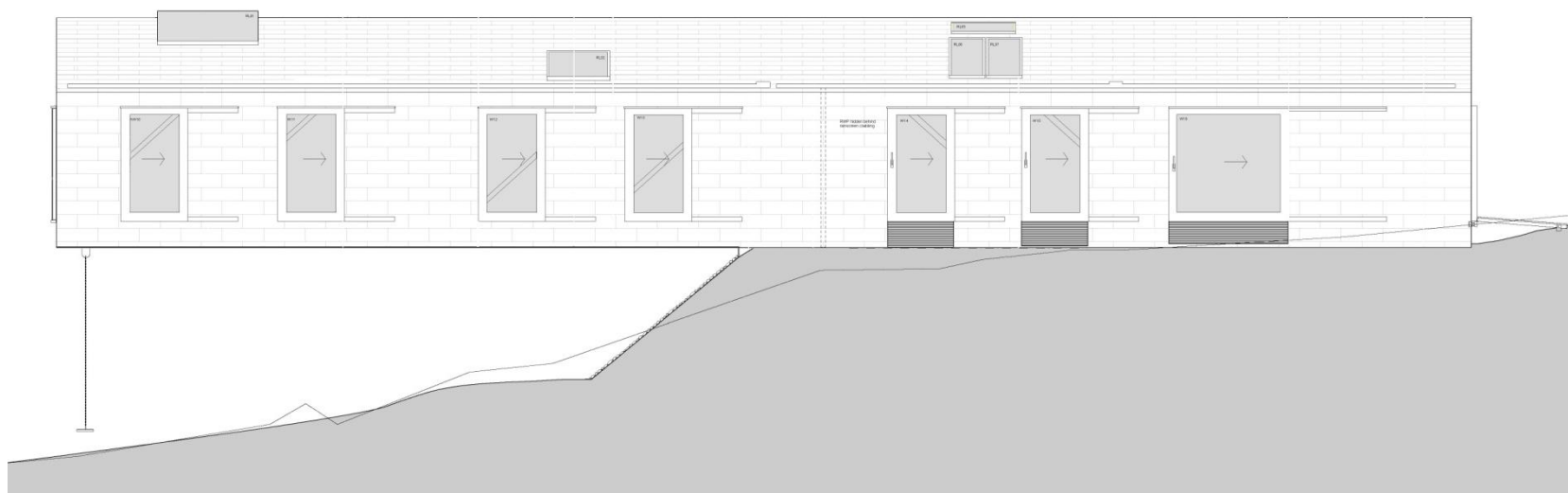
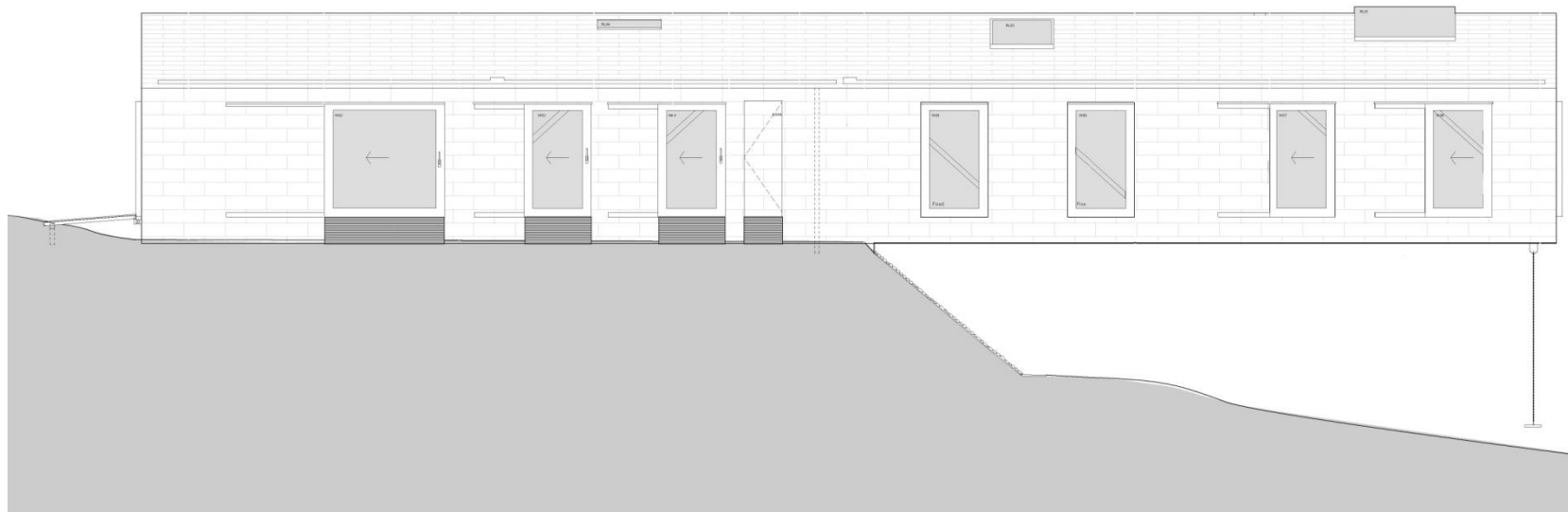
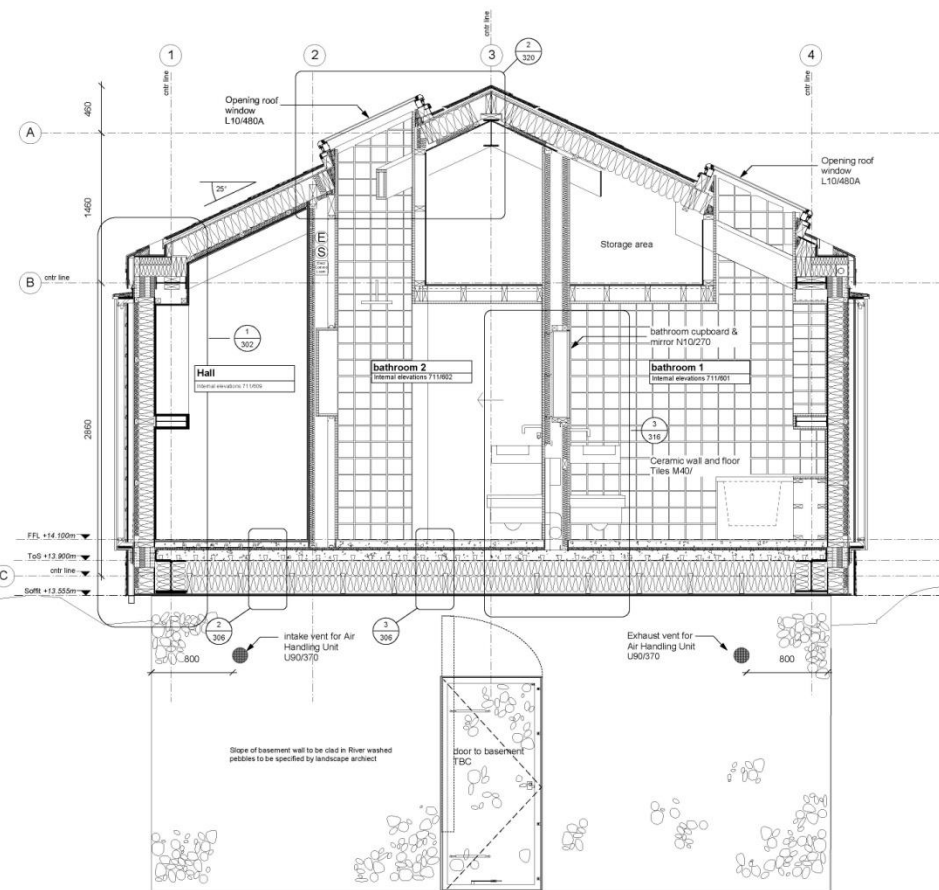
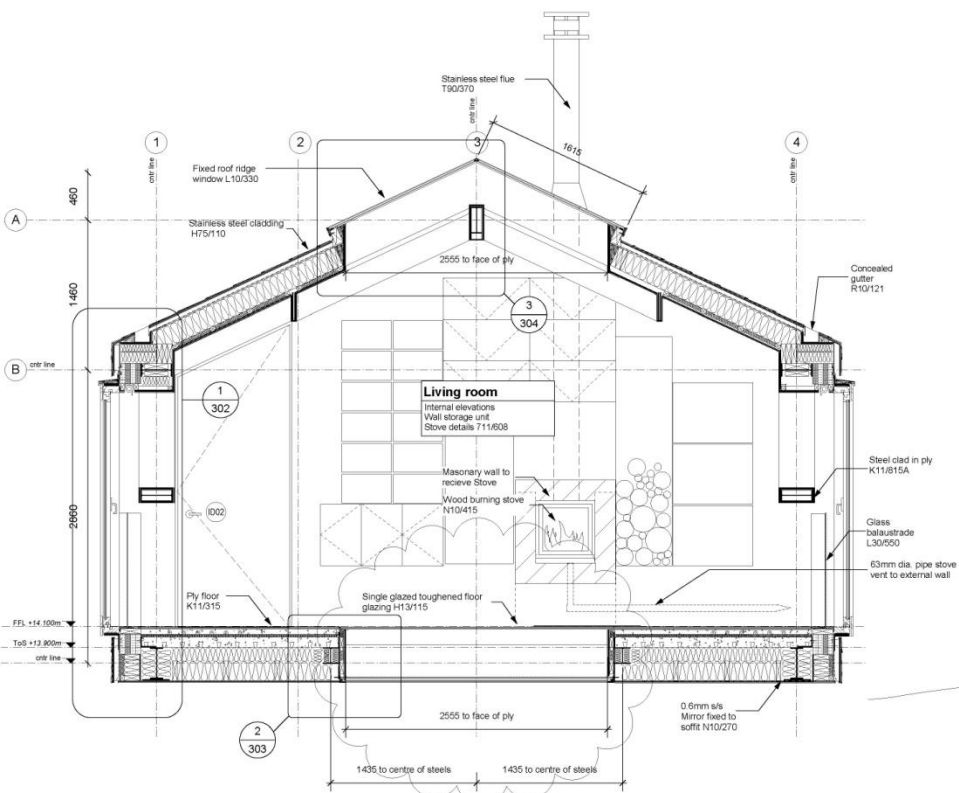
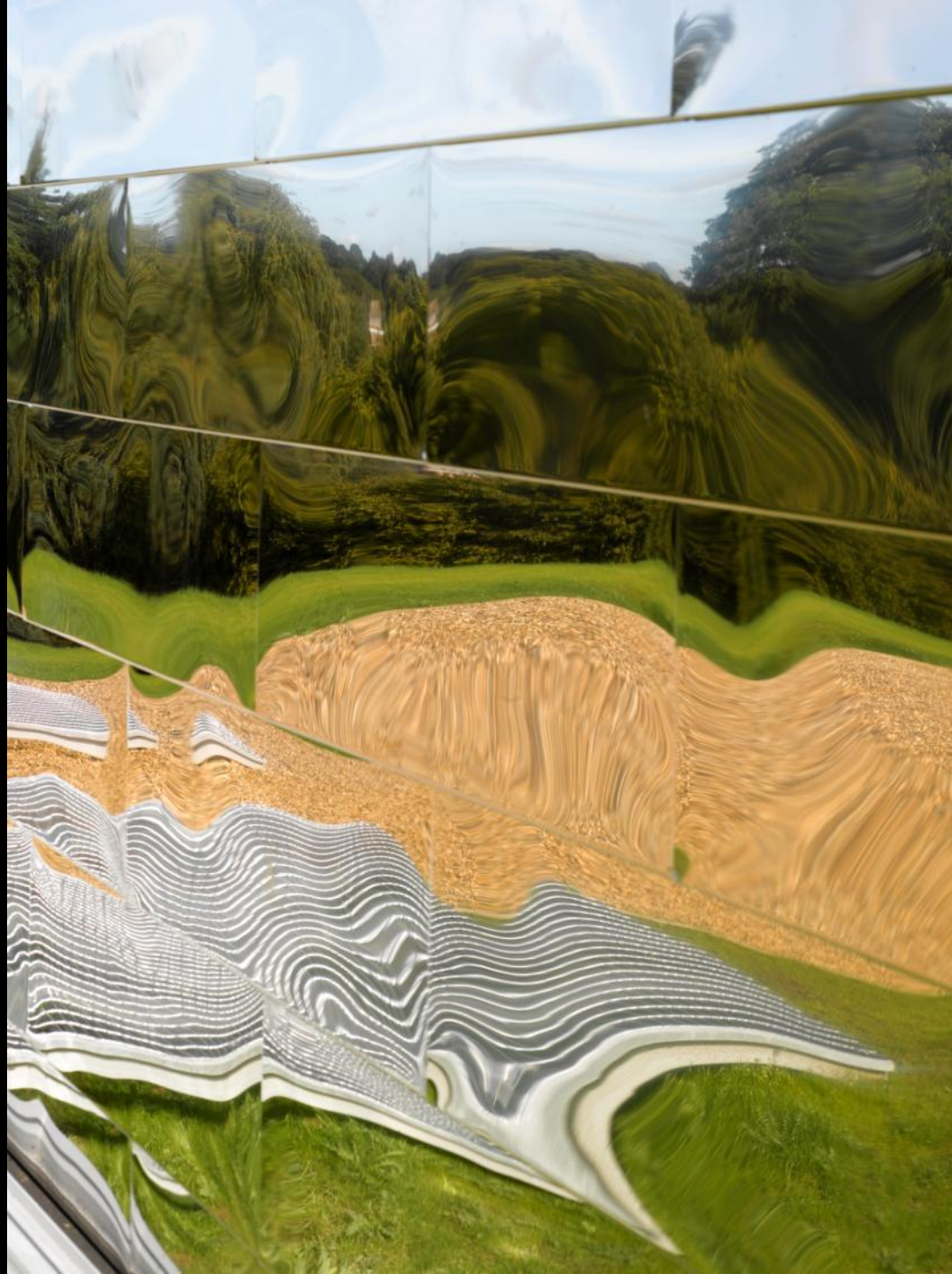


Figure 8: Deflection on Live Load for Option 1













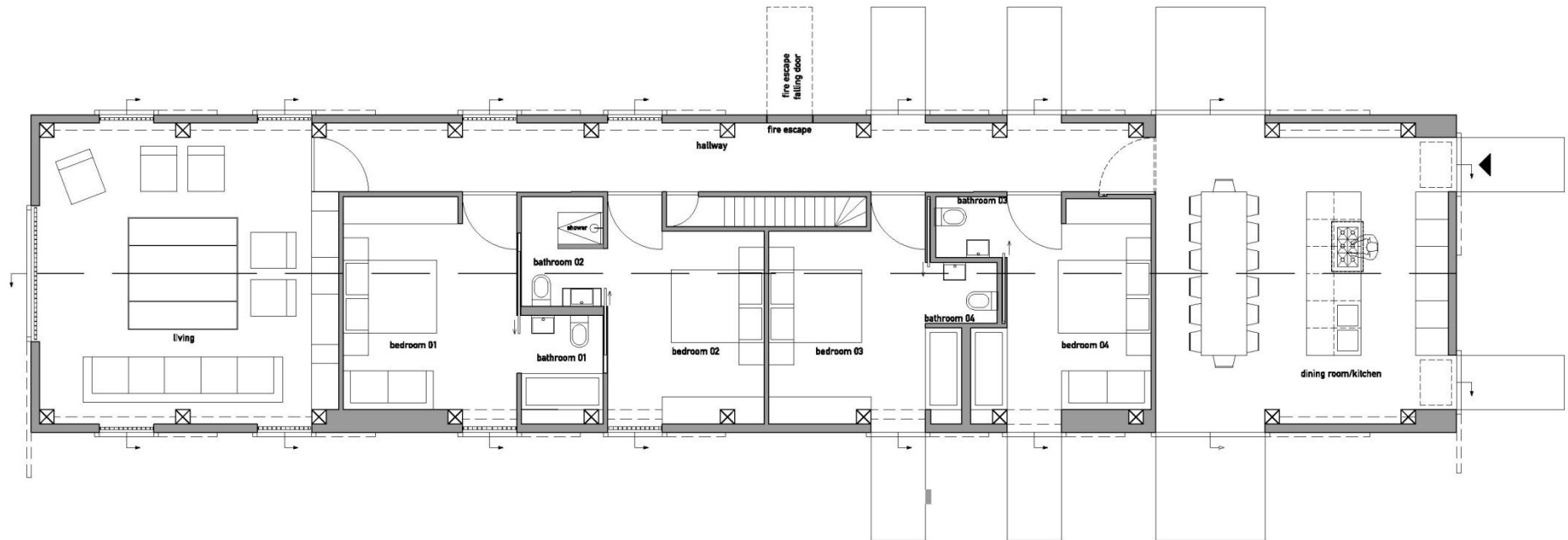




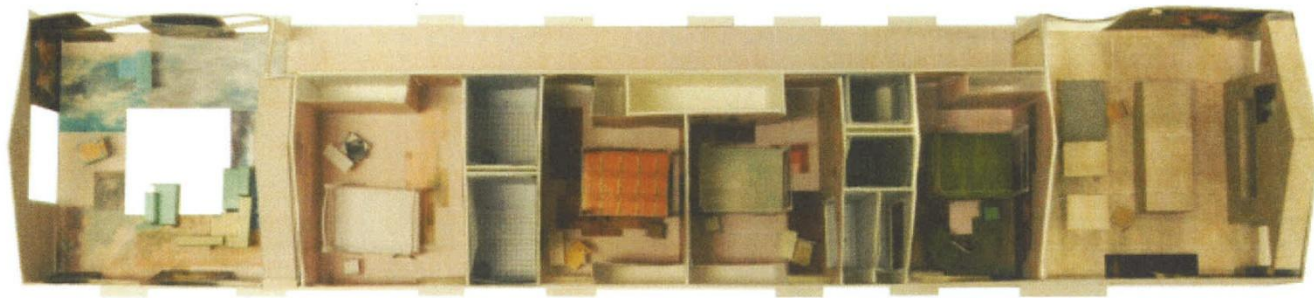








ALL ROOMS



A HOUSE SHARED WITH THE EARTH AND THE SKY. A TWO PERSONS HOME EXPANDED IN SHAPE AND CONTENT TO A EIGHT PERSONS COTTAGE.

DISHES FOR THE KITCHEN

DINNER PLATES (x16)



MEDIUM PLATES (x16)



CUTLERY SET (KNIFE, FORK, SPOON, TEASPOON x16)



BOWLS (x16)



CUP AND SAUCER (x16)



WINE GLASS (x16)



GLASS TUMBLER (LARGE x16)



GLASS TUMBLER (MEDIUM x16)



MUGS (x16)



DISHES

EACH SET IS CONSISTING OF 14 AVERAGE PIECES AND TWO SPECIAL ONES. THE SPECIAL PIECES ARE TRADITIONAL ENGLISH ITEMS WHICH MAKE THE COLLECTORS WANT MORE. SO EACH VISITOR HAS THE POSSIBILITY TO ENJOY THE EXPERIENCE OF EATING FROM A SUCH VALUABLE DISH.



DINNER FOR TWO, FOR EIGHT

WHEN A COUPLE IS VISITING THE BALANCING BARN, THERE WILL BE A COLLECTION OF ENGLISH HANDCRAFTED DISHES FOR THEM TO USE. WHEN EIGHT PEOPLE ARE VISITING THE COLLECTION WILL BE SHARED AND EVERY PERSON HAS TWO SPECIAL PIECES MIND WITHIN THE ORDINARY DISHES.



PAINTINGS FOR THE KITCHEN



JOHN CONSTABLE: "SALISBURY CATHEDRAL"
ORIGINAL: 88/112 CM



DETAIL: THE BISHOP AND HIS WIFE
SIZE 30/50 CM
PIXELSIZE: 0.5/0.5 CM
THE COLORS FROM THIS DETAIL ARE DRAGGED
OUT INTO THE PIXEL DRAWING FOR THE
KITCHEN WALL AND THE CORRIDOR.



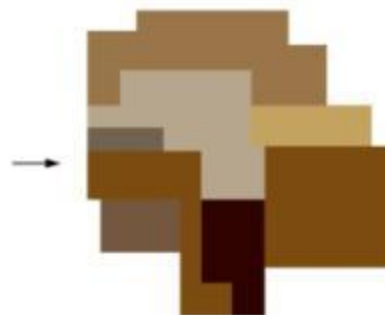
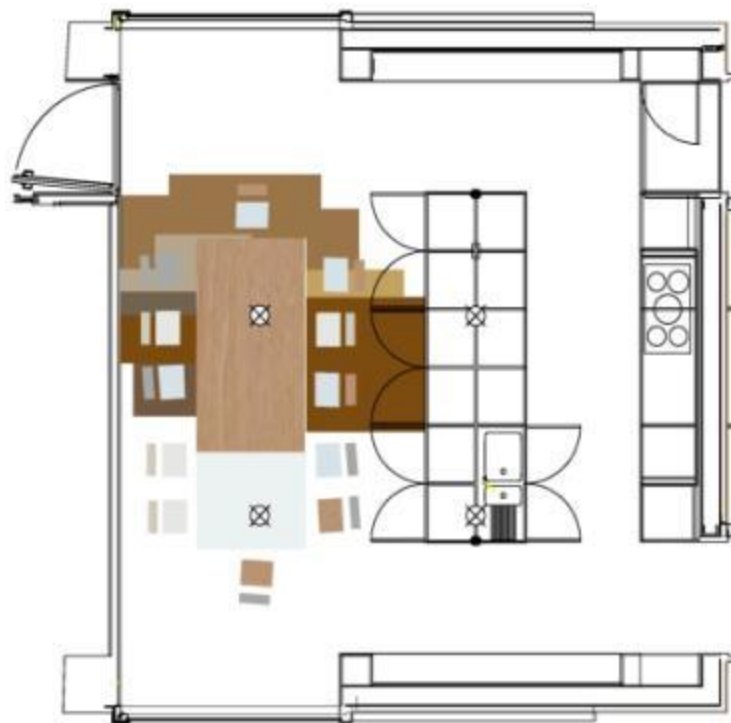
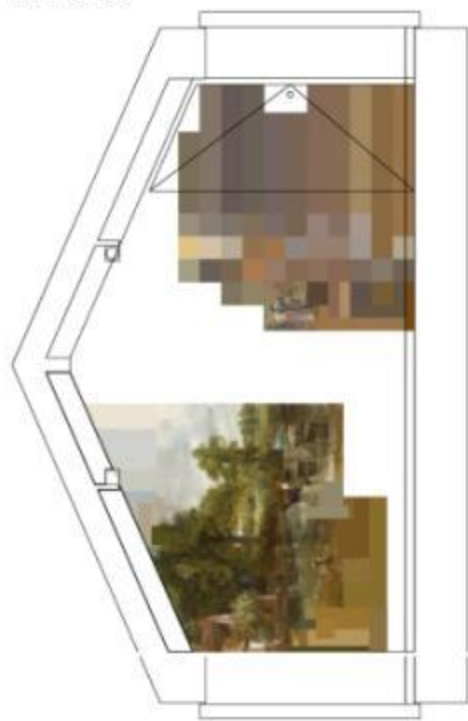
JOHN CONSTABLE: "THE HAYWAIN", 1821
ORIGINAL: 130/185 CM



THOMAS GAINSBOROUGH: "MR AND MRS ANDREWS", 1750
ORIGINAL: 119/70 CM

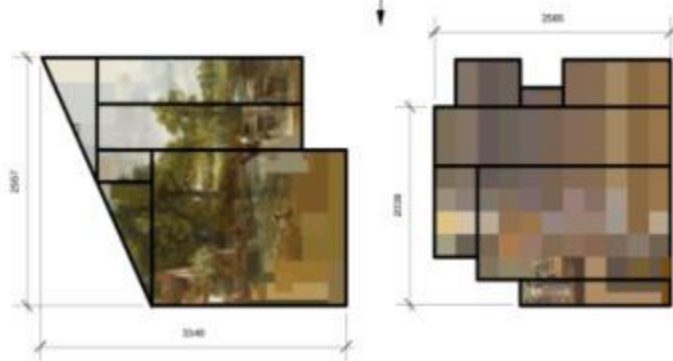
THE PAINTINGS THAT ARE USED IN THE KITCHEN ARE A LANDSCAPE PAINTING WHICH SHOWS A HAYWAGON, A PAINTING WHERE A FIGURE DETAIL IS EXTRACTED FROM AND A LANDSCAPE PAINTING WITH THE PORTRAIT OF LANDOWNERS IN FRONT OF THE BACKGROUND OF A TYPICAL ENGLISH LANDSCAPE.

KITCHEN

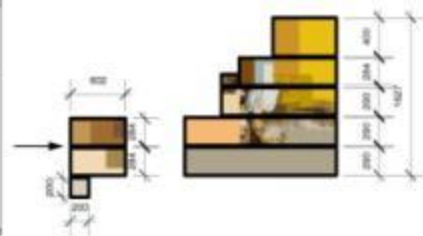
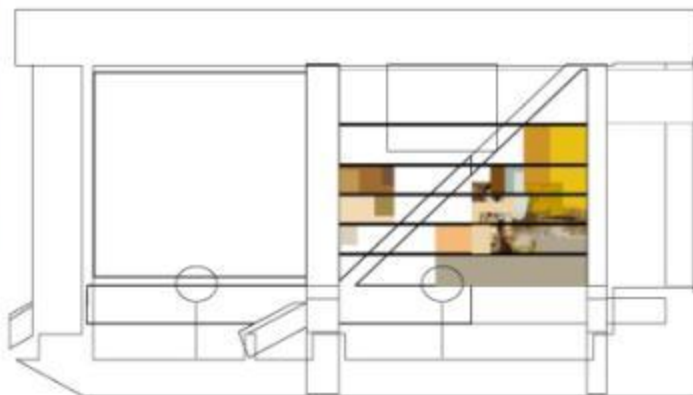


RUSS

TOPVIEW



PIXELS FOR THE WALLS



PIXELS FOR THE WALLS

PAINTING FOR THE SLEEPING ROOMS



JOHN CONSTABLE:
"CORNFIELD", 1826
ORIGINAL: 122/143 CM



JOHN CONSTABLE:
"CORNFIELD", 1826
ORIGINAL: 122/143 CM



JOHN CONSTABLE:
"BOATBUILDING IN
FLATFORD", 1815
ORIGINAL: 51/62 CM

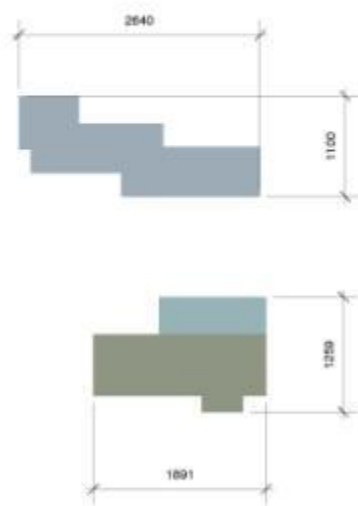
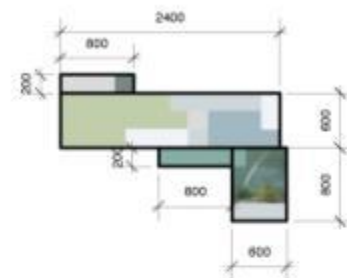


THIS IS A COLLAGE OF SEVERAL OF JOHN
CONSTABLE'S CLOUDSTUDIES. THE STUDIES
ARE SMALL IN
ORIGINAL. THEY ARE BLOWN UP
IN THE COLLAGE.

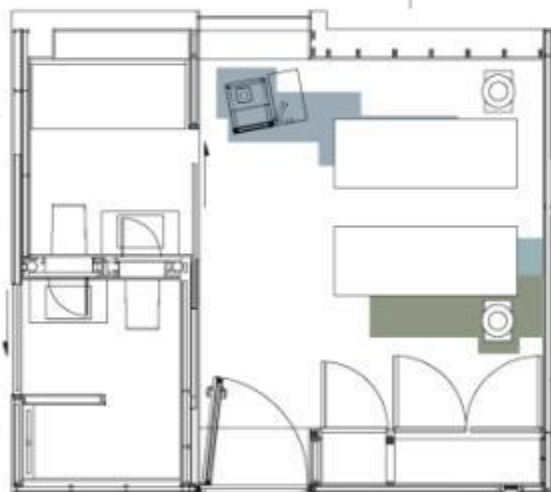
CLOUDROOM



PIXELS FOR THE WALLS



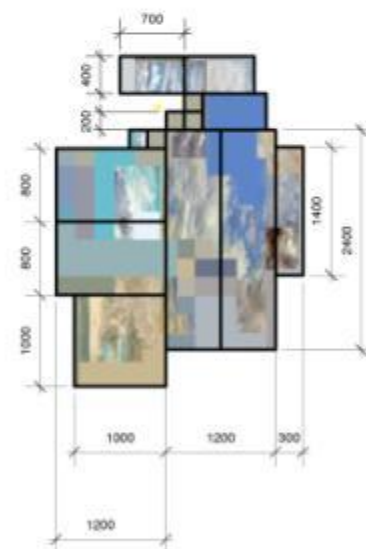
8045



TOPVIEW



PIRELS FOR THE WALLS



LIVINGROOM PAINTINGS



THOMAS GAINSBOROUGH: "PORTRAIT OF A BOY
IN BLUE", 1816
ORIGINAL 122/178 CM

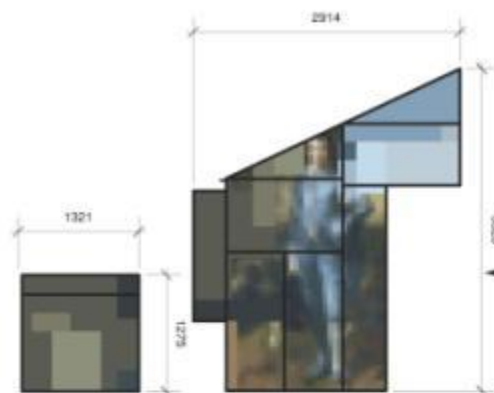


THOMAS GAINSBOROUGH:
"PORTRAIT OF A LADY IN
BLUE", 1777-79
ORIGINAL 50/41 CM

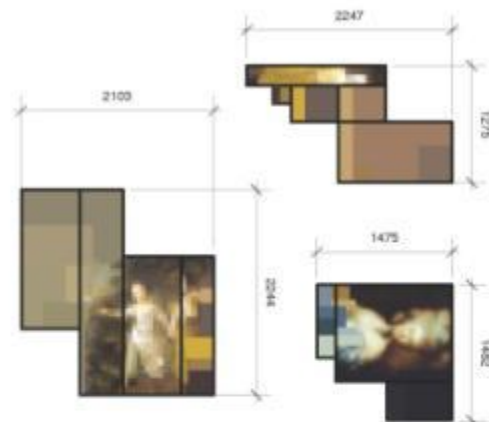
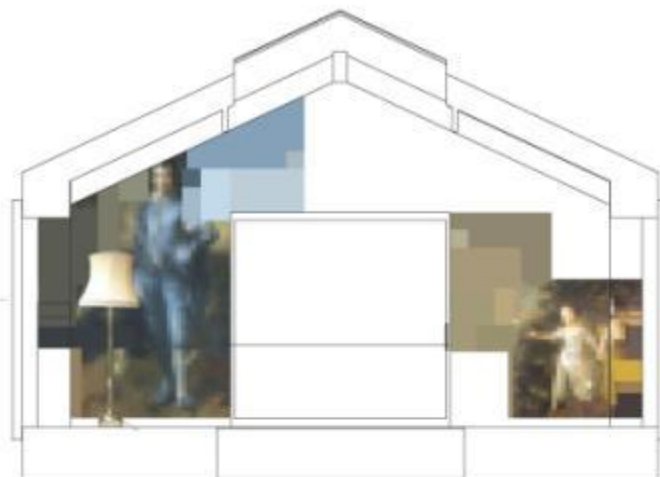


THOMAS
GAINSBOROUGH: "PAINTER'S
DAUGHTERS CHASING A BUTTER-
FLY", 1758
ORIGINAL 105/113.5 CM

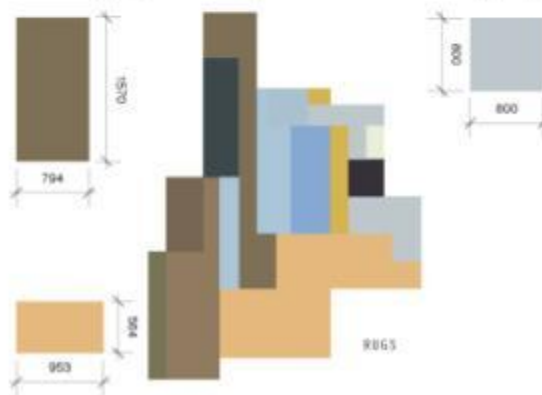
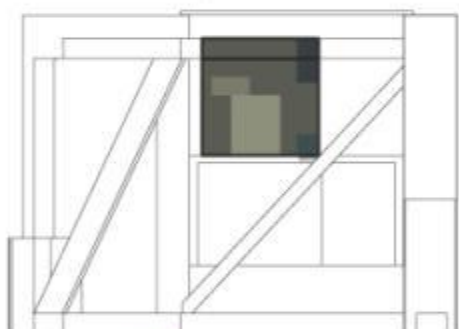
LIVINGROOM



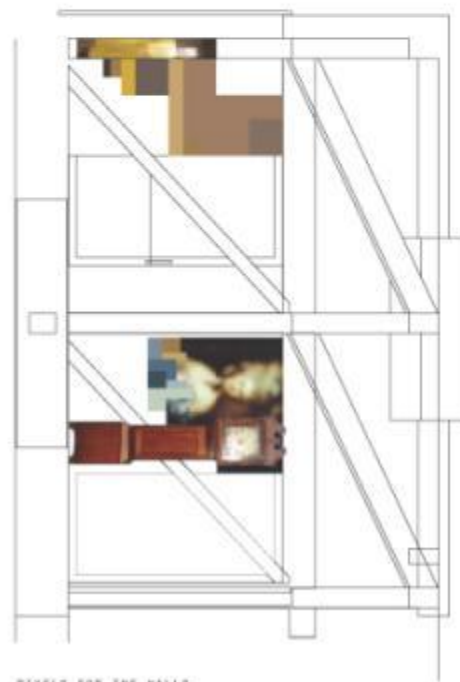
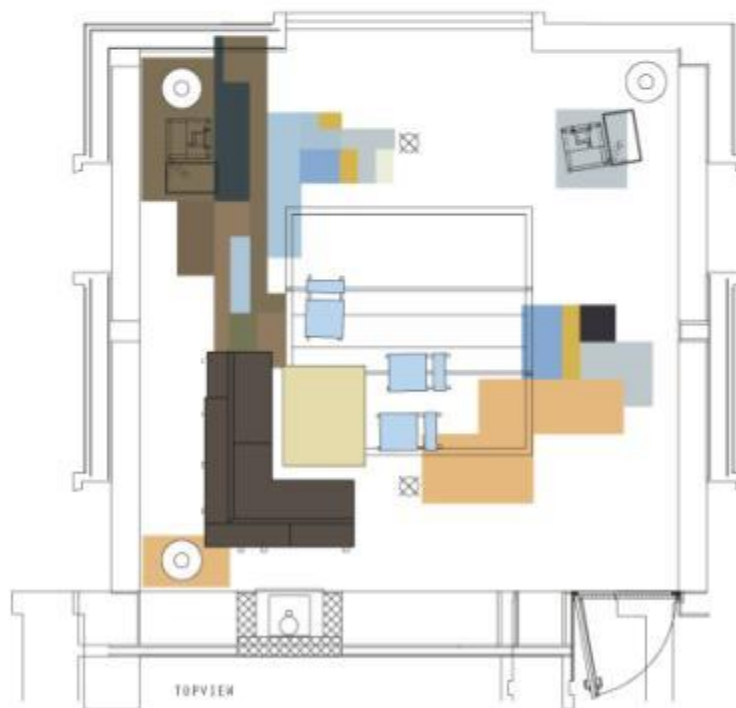
PIXELS FOR THE WALLS



PIXELS FOR THE WALLS



RUGS



PIXELS FOR THE WALLS

























