

Enterprise COllaboration & INteroperability



Winter School on Knowledge Technologies for Complex Business Environments

Ljubljana

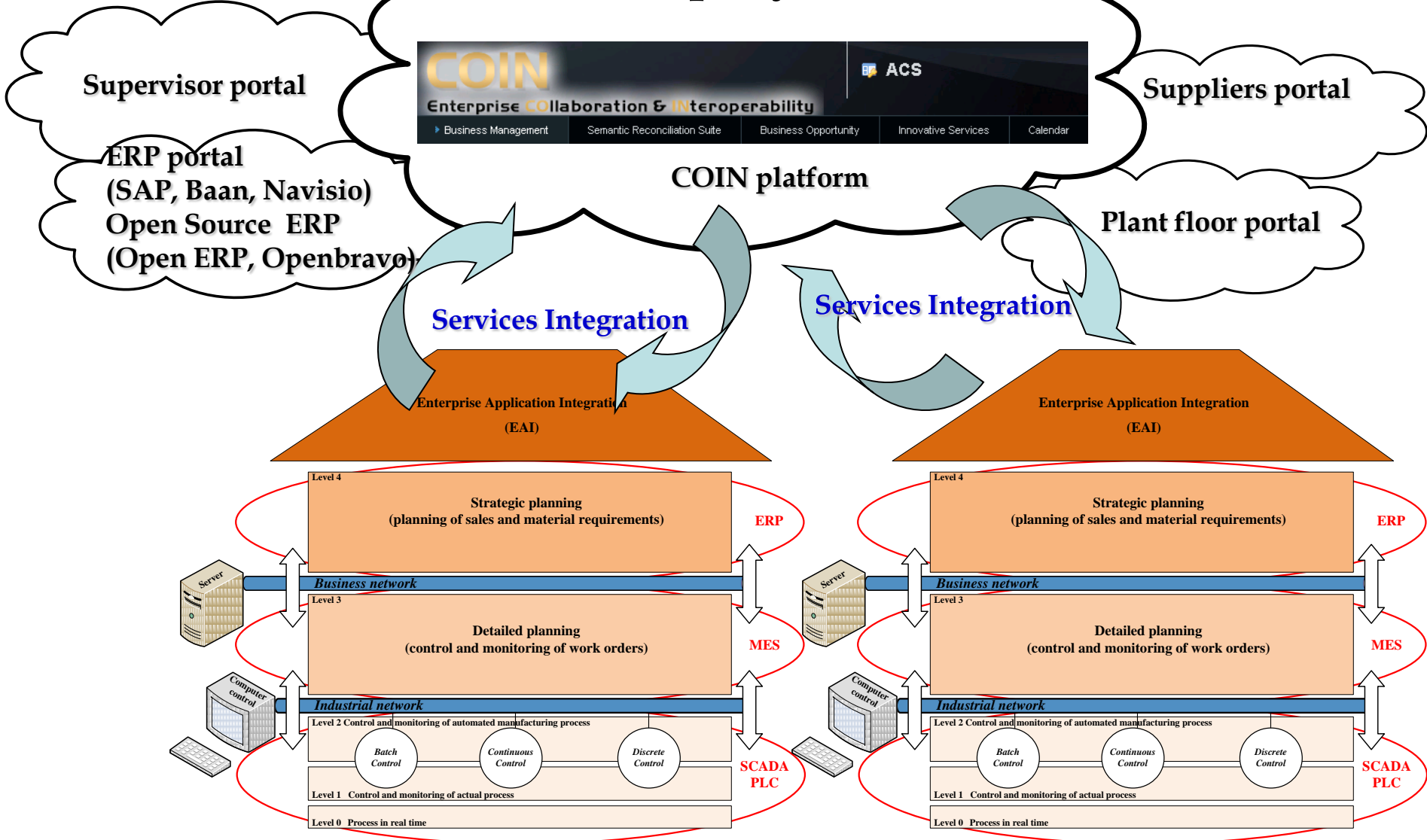
November 28 – December 2, 2011

Simon Oman



Theoretical scenario

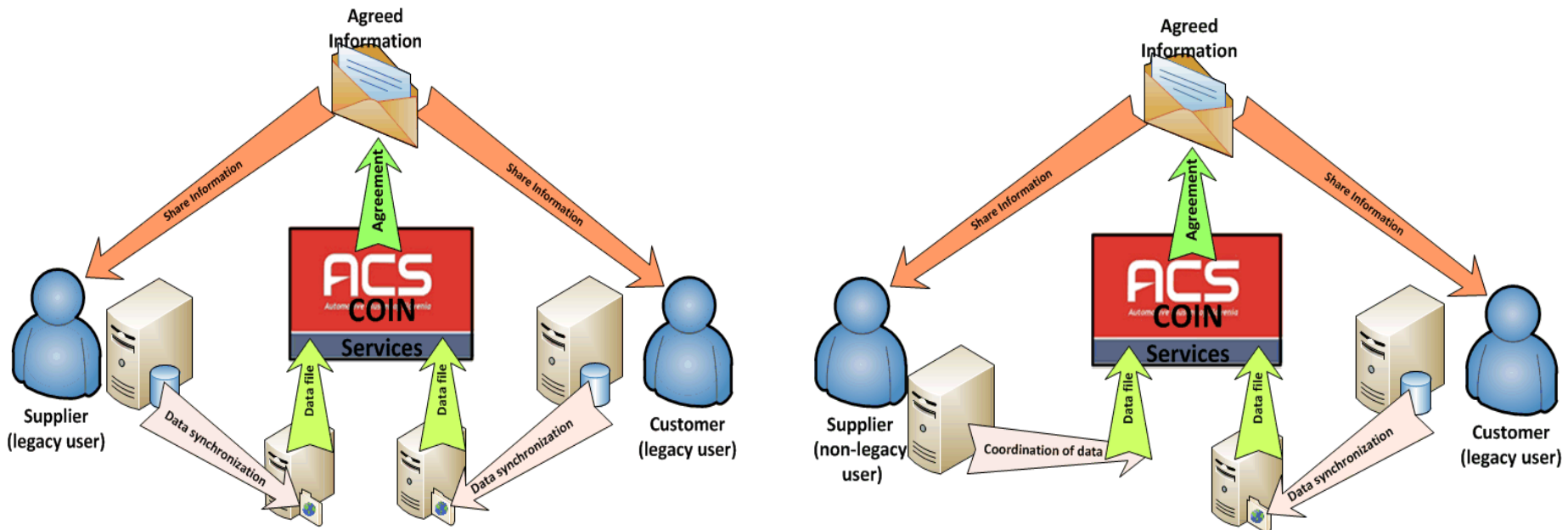
- Business model for 1-N company





Groups of users

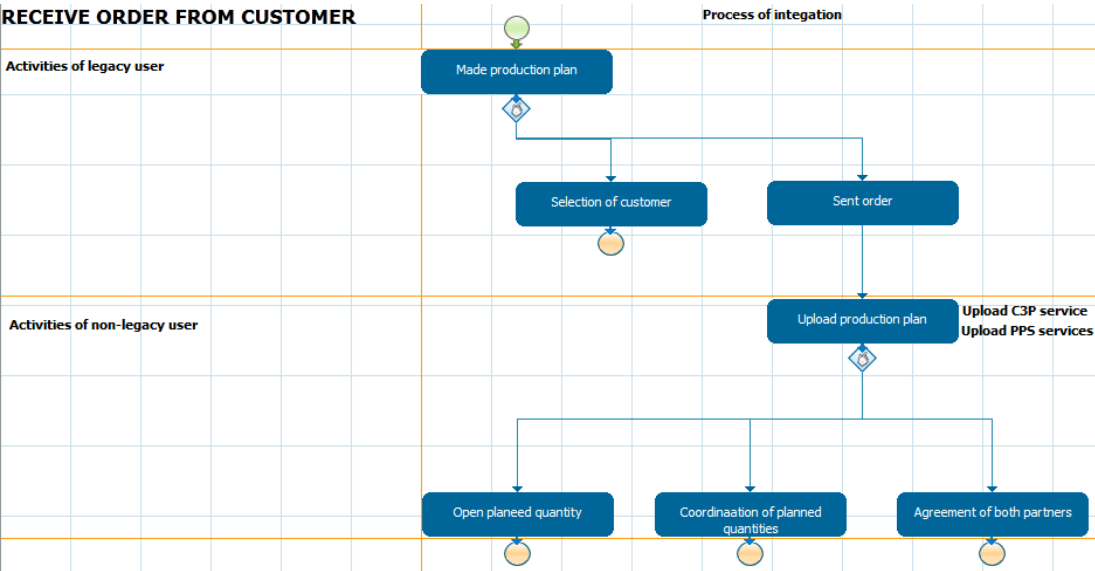
- The users of ACS shall be divided into two groups:
 - Legacy users
 - Non-Legacy users



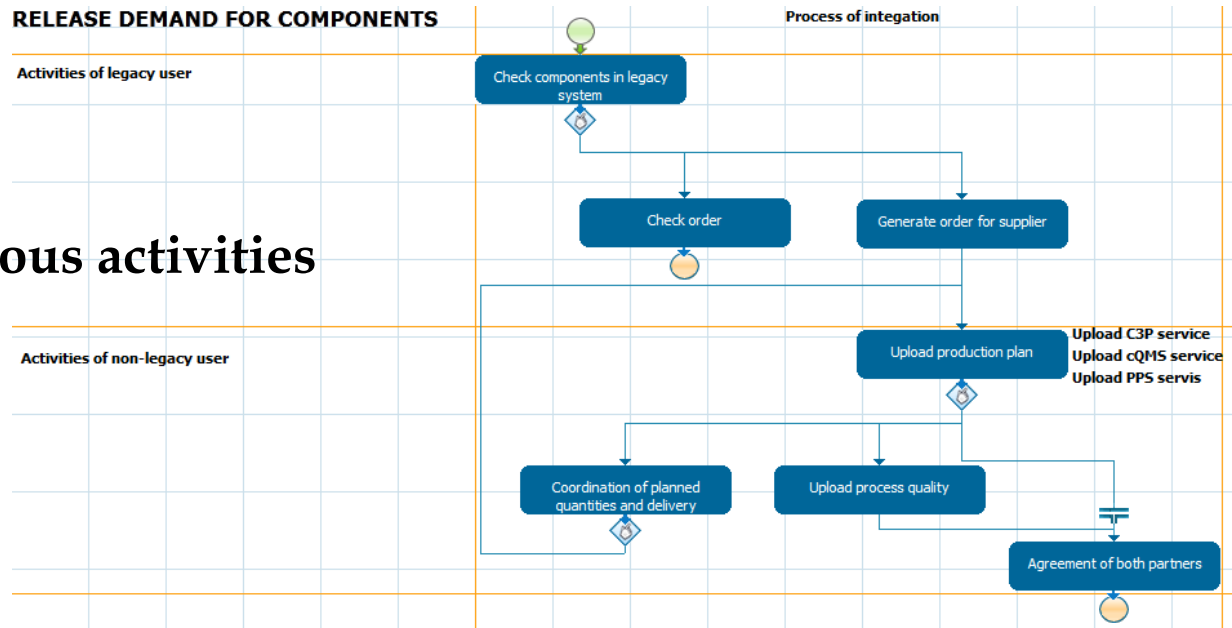
- Legacy users are those users who use one of the legacy systems (SAP, Navision, Baan, Pro/E, Catia, etc.)
- Non-legacy users are those who use only Internet Explorer



Workflows for execution



RELEASE DEMAND FOR COMPONENTS



- Unification process
- Workflow should use various activities



Collaboration workflow

- Process of collaboration workflow integration

No.	St. lupca	Description	SP Delov.	SP Sira	15.11.11	16.11.11	17.11.11	18.11.11	19.11.11	20.11.11	21.11.11	22.11.11	23.11.11	24.11.11	25.11.11	26.11.11	27.11.11
012311	04	Piston	1240						10.240								10.240
012316	04	Piston	1360						9.600								9.600
014638	02	Spacer															
014778	02	Spacer															
019440	02	Spacer															
021111	02	Piston															
021112	02	Spacer block	1340														
022911	02	Ball socket															
023077	04	Piston rod guide							16.000								16.000
023979	02	Spring sleeve															
023994	02	Protective tube															
025161	02	Spacer															
027305	02	Spring Sleeve															
028358	02	Protective cap															
029047	02	Adaptor															
029816	02	Protective cap															
030666	04	Spacer							9.600								9.600
034961	02	Protective tube															
034817	02	Ball socket															
039947	04	Protective cap							1.200								1.200
044060	02	Spine															
047089	02	Adaptor															
057026	04	Piston							5.120								5.120
060105	02	Adaptor															
060816	02	Guide Bush															3.000
091063	02	Blowdown cable adaptor															
091461	04	Piston															8.000
100135	6	Garhouse set ASSI HP404 shir															
100136	6	Garhouse set ASSI HP peach															
100139	6	Protecting cap peach															
100142	6	Protecting cap HP 404															
100588	6	Bottom															
100713	6	Frame															
100720	6	Frame HP 6302(03)A/W5															

-Preview of exported data in PM

Uploaded data from legacy system

Overview data and click "Next Step" to run C3P service

* ENTRY NO: 169787

FORECAST NAME: PROZVOODNA

ITEM NO: 012311

FORECAST DATE: 2011-11-24

FORECAST QUANTITY: 10.240

MEASURE CODE: KDS

MEASURE UNIT: 1

BASE QUANTITY: 10.240

LOCATION CODE: QDELJK

COMPONENT FORECAST: No

DESCRIPTION: Piston

CUSTOMER NO: 84

CALL OFF NO: 415

CALL OFF DATE: 2011-09-14

ORDER CODE: ED00000640

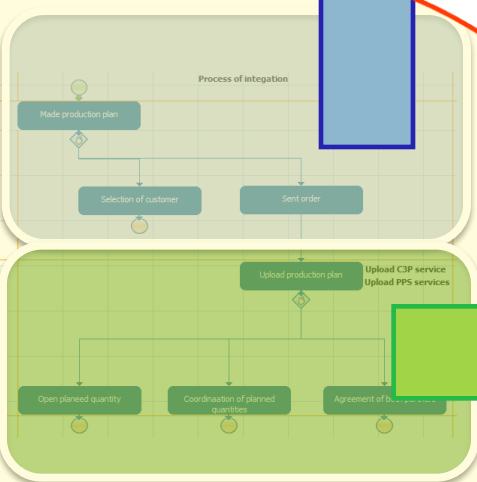
Submit

* Required Field

RECEIVE ORDER FROM CUSTOMER

Activities of legacy user

Activities of non-legacy user



ProcessMaker
Workflow Simplified

HOME DESIGNER ADMIN

Steps Information Actions Case Notes

Case #: 63

Case # 63 Title: #63
http://demo.txt.it:8055/J3P-war/

Collaborative Process: ACS Virtual Room

Negotiate Financial Agreement based on below technical agreement

Negotiate Technical Agreement below

VEN (sender) Measures: March 2011

TeS (receiver) Measures: March 2011

Communication Module

Select Team and Recipients

User: Skype Email IM

No user selected!

Log

[INFO] Tue Nov 01 2011 19:22:22 - ACS project is opened [Enrico]

[INFO] Tue Nov 01 2011 19:22:19 - online [Enrico]

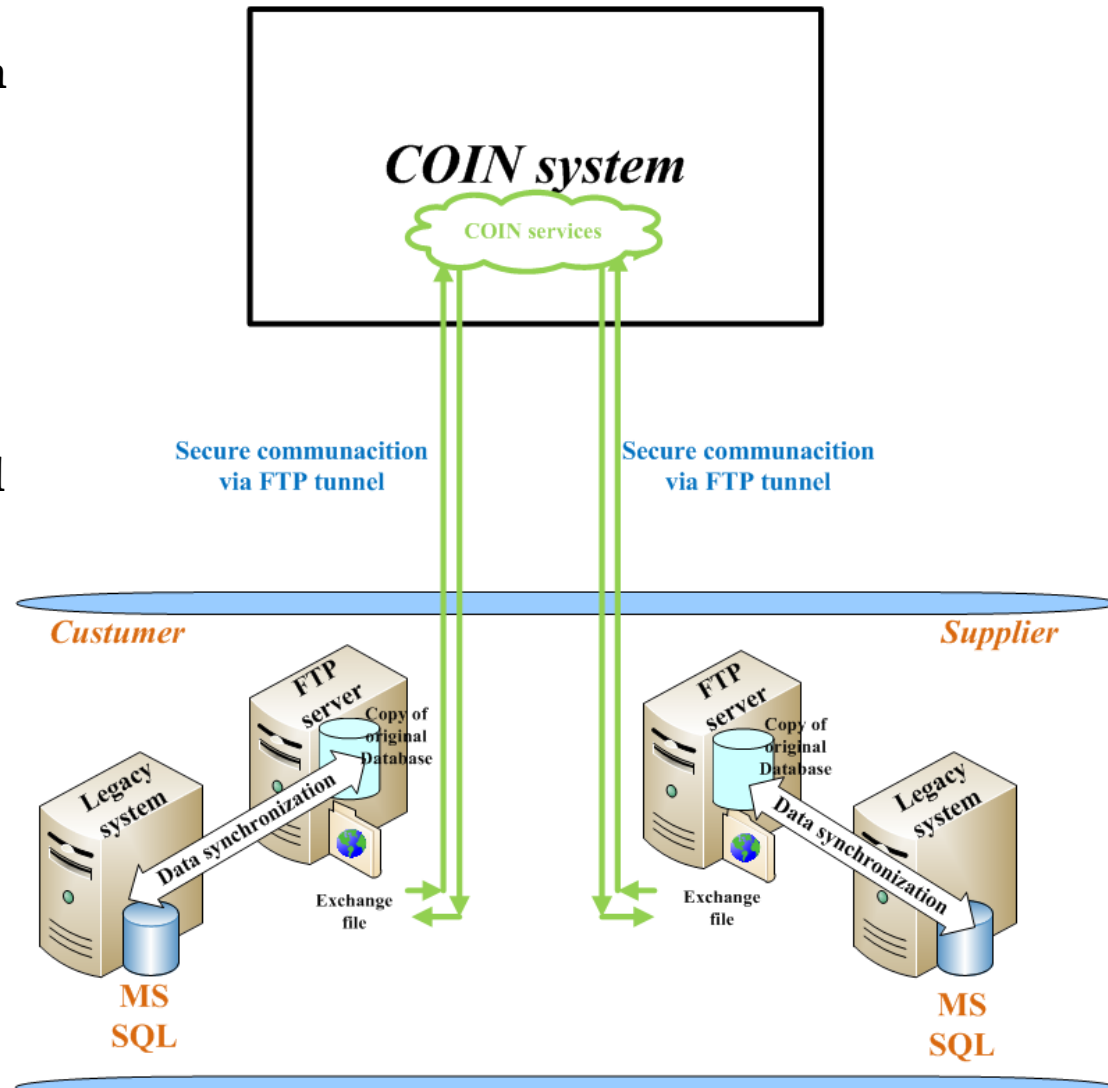
[INFO] Mon Oct 31 2011 16:07:17 - Private Process has been opened [Enrico]



Pilot solution

- **Technical perspective of pilot solution**

- The model provides a link between the ERP system and COIN services via FTP communication channel
- For security reasons, not connected directly to the database.
- Transmit only those data needed to communicate with COIN services.
- Ensured the correct syntax required for synchronization.



Disadvantages:

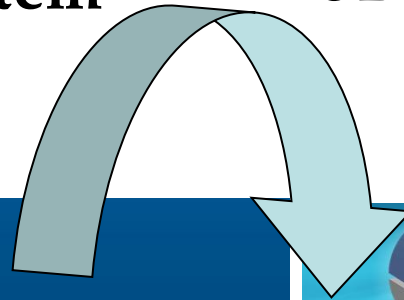
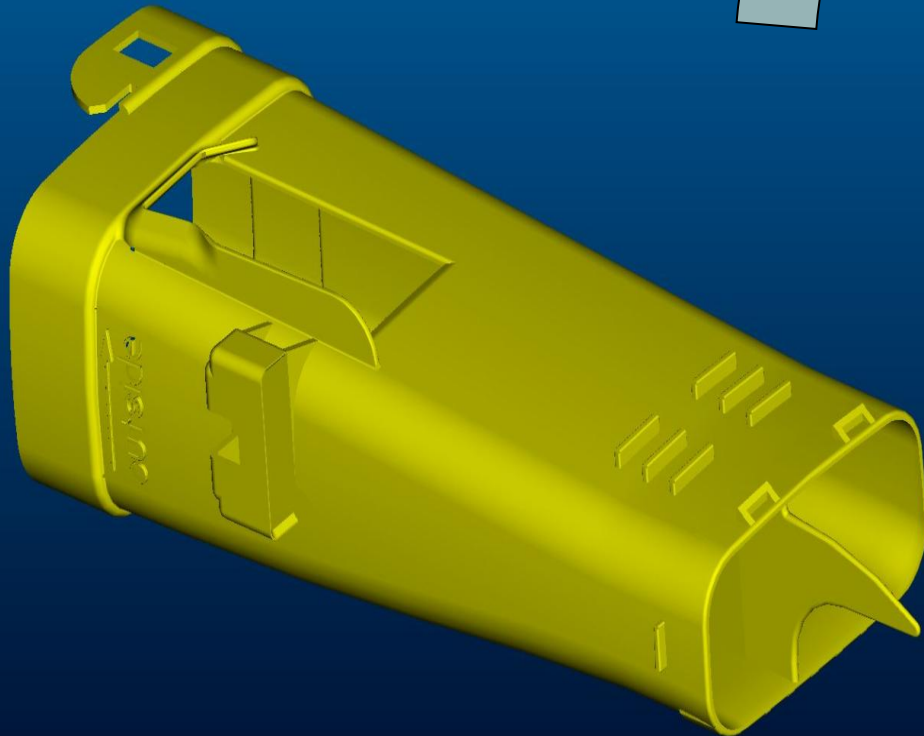
- Safety data
- Control and reliability

Practical case

RUN 3D service

- 3D model in legacy system
(Pro/E, Catia,..)
-export in STL format

- 3D model in COIN services
-import in STL format





Lesson learned

- **Companies in ACS establish the following experience:**
 - **Increase the effective collaboration between partners in order to improve competitive advantage.**
 - **Increased value added in the price of the product.**
 - **Companies reduce the cost of investment in IT technology.**
 - **Easier coordination and negotiation in the entire supply chain.**
 - **Attention is focused on optimizing business processes.**
 - **Improves the process of mutual cooperation.**
 - **Unified workflows make standardized procedure for exchanging information.**
 - **Collaboration workflows can be quite good followed by technological IT trend.**



**Thank you for
your attention !**