

Demonstration: Dynamic Sensor Registration and Semantic Processing for ad-hoc MOBILE Environments (SemMOB)

Pramod Anantharam, Alan Smith, Josh Pschorr, Krishnaprasad Thirunarayan, and Amit Sheth
Ohio Center of Excellence in Knowledge-enabled Computing (Kno.e.sis),
Wright State University, Dayton, USA

Why Dynamism?



There are a variety of sensors used to monitor vitals of firefighters, location, and poisonous gases.

Footsteps

Heart rate

GPS

CO

O₂

CO₂

Accelerometer

Compass

First responders have limited time to analyze sensor (on and around them) observations.

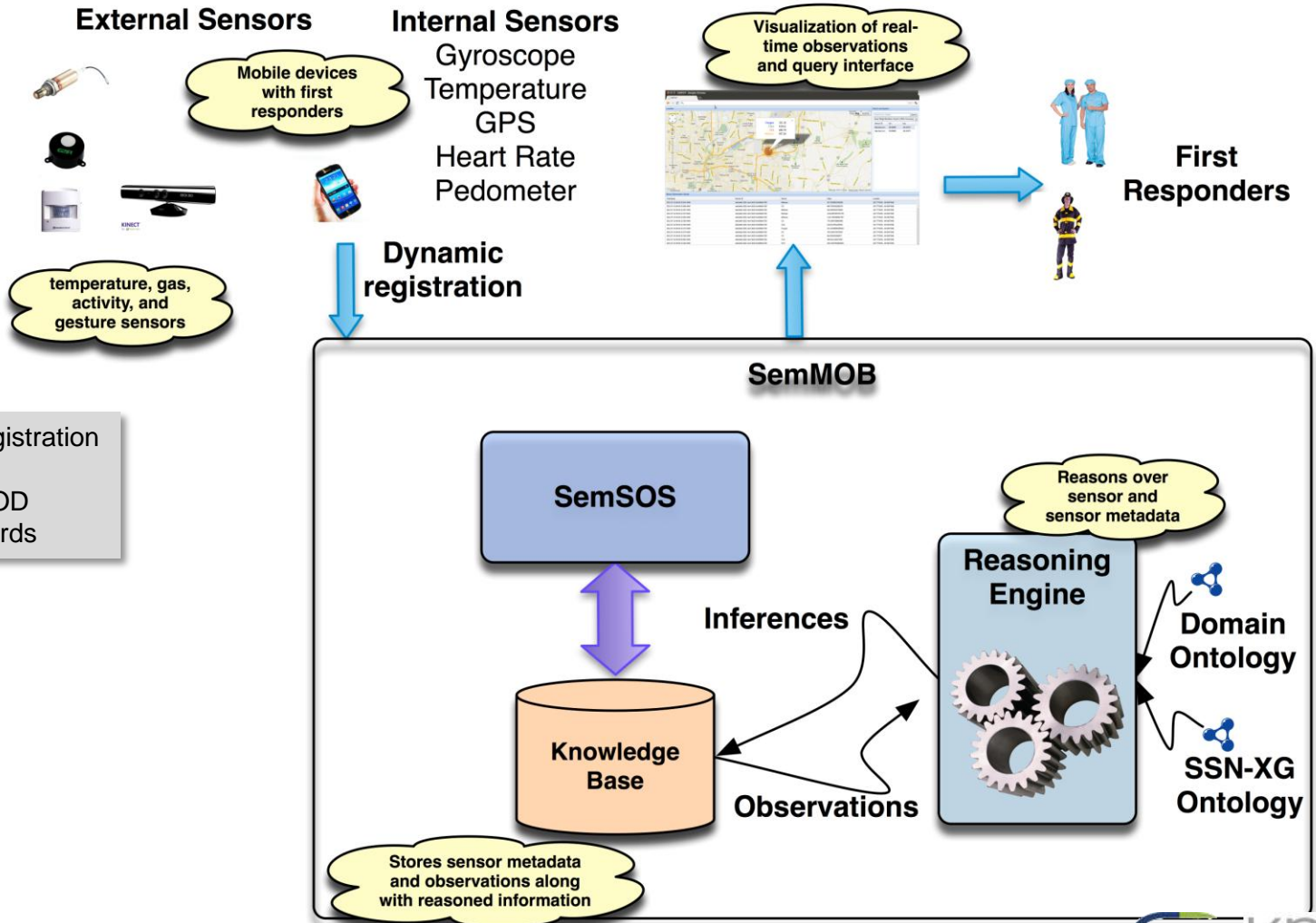
There is a team of them making it further difficult for analysis

Sensors on each responder provides different view of the event and they need to **register dynamically** as the firefighters arrive.

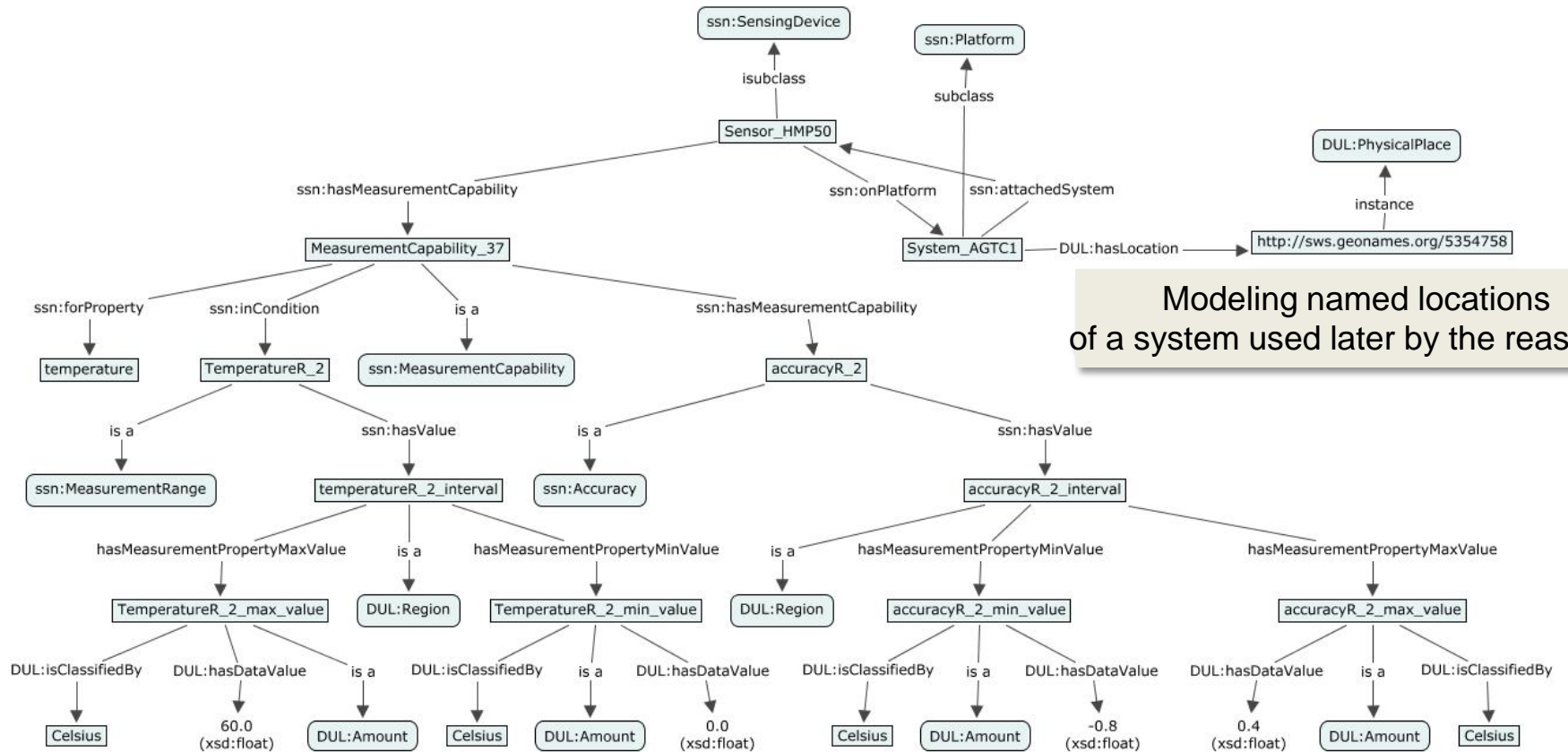
Fire fighters need to combine **prior knowledge** of **fires** and **its behavior**, **extinguishers**, and **floor plan** of the building for rescue strategy and operations.

Semantic Web allow us to describe the domain, sensors, and first responders -- apply reasoning techniques to derive actionable insights

SemMOB Architecture



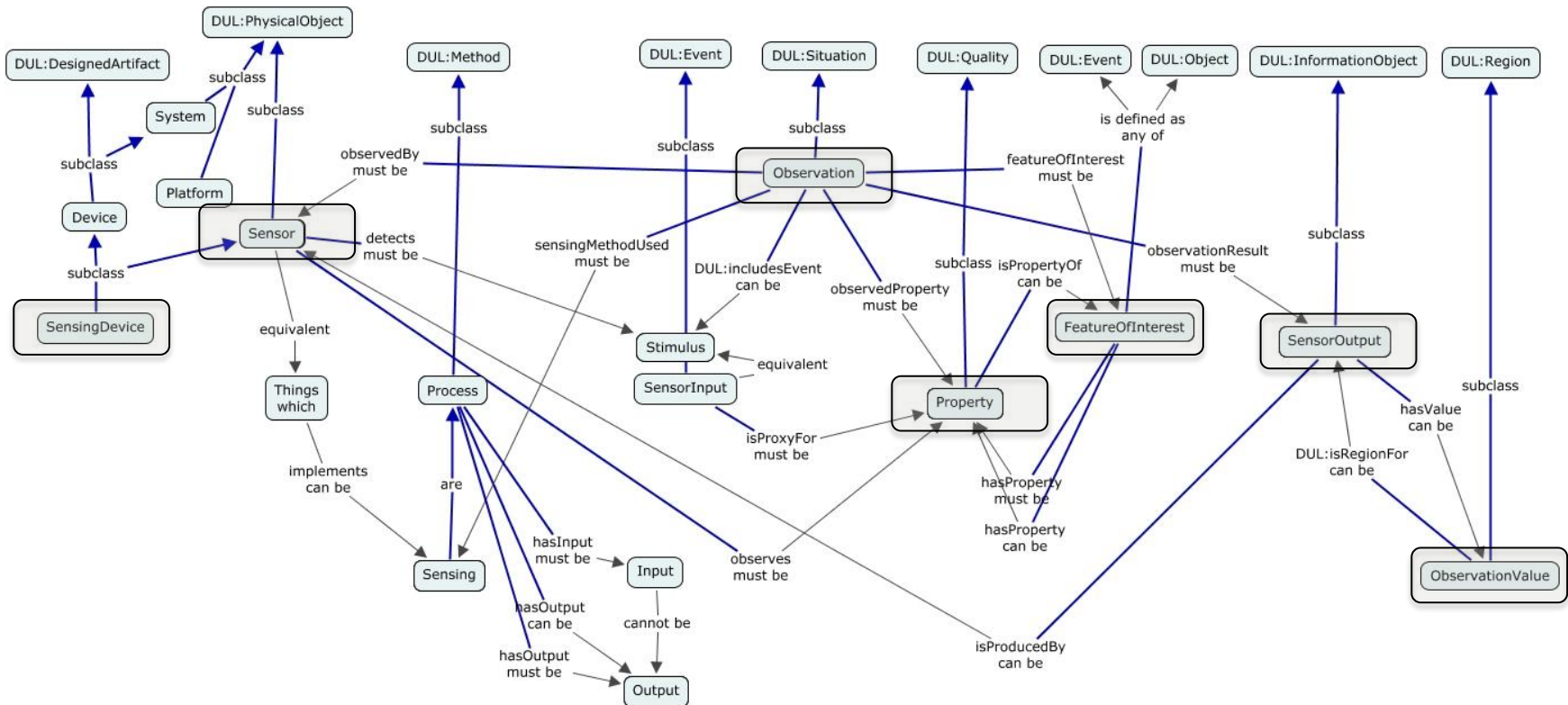
Modeling Sensors



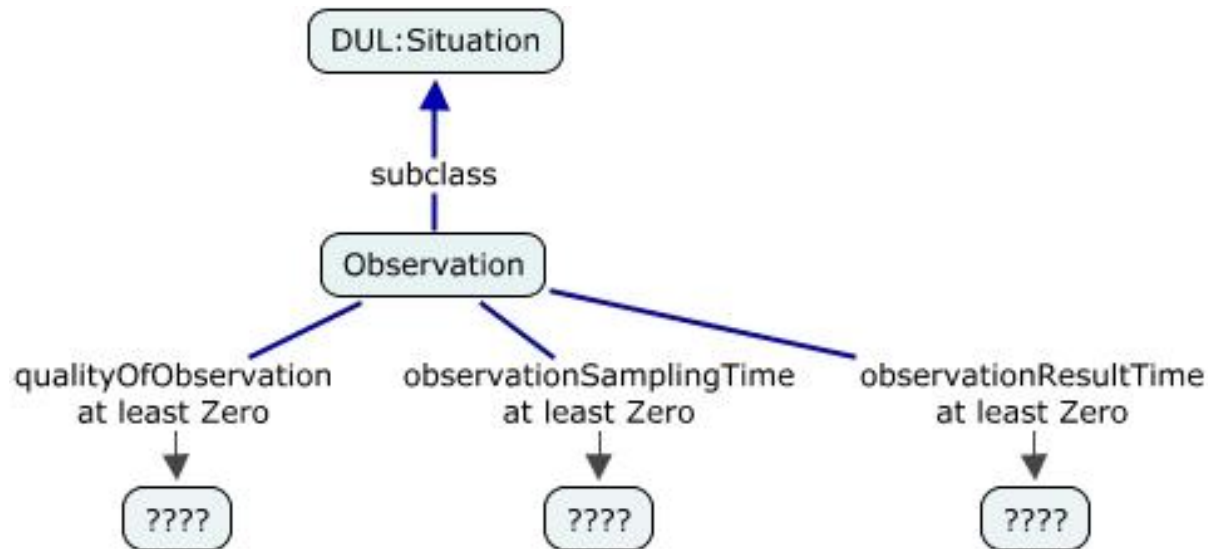
Modeling named locations of a system used later by the reasoner.

Modeling accuracy of sensors

SSN XG Model Depicting Basic Sensor Modeling Concepts

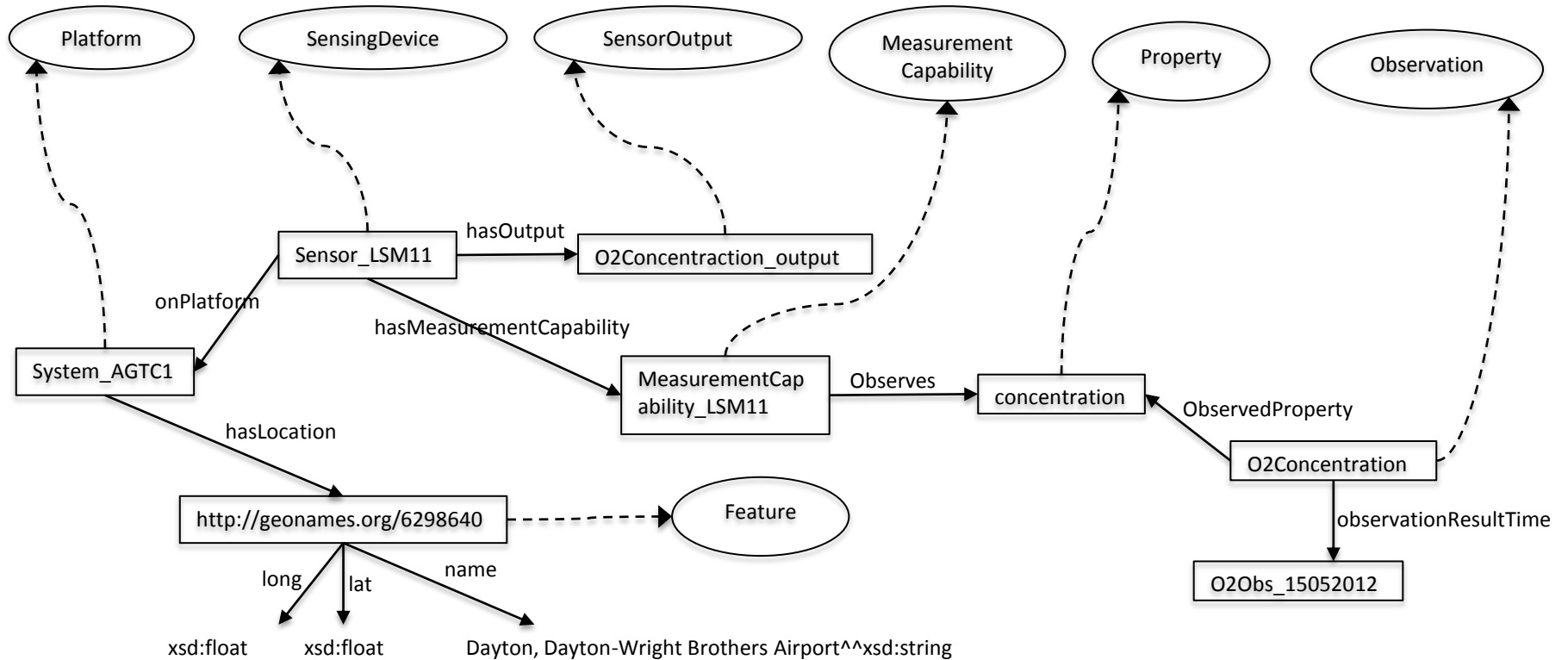


SSN XG Concepts for Modeling Observation Time



Modeling observation time

SemMOB: Sensor Model

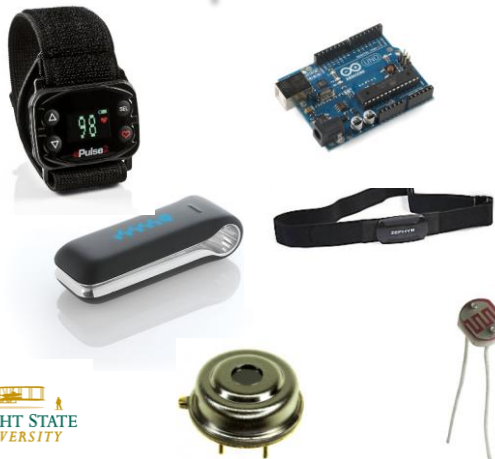


Leveraging Mobile Devices using SemSOS

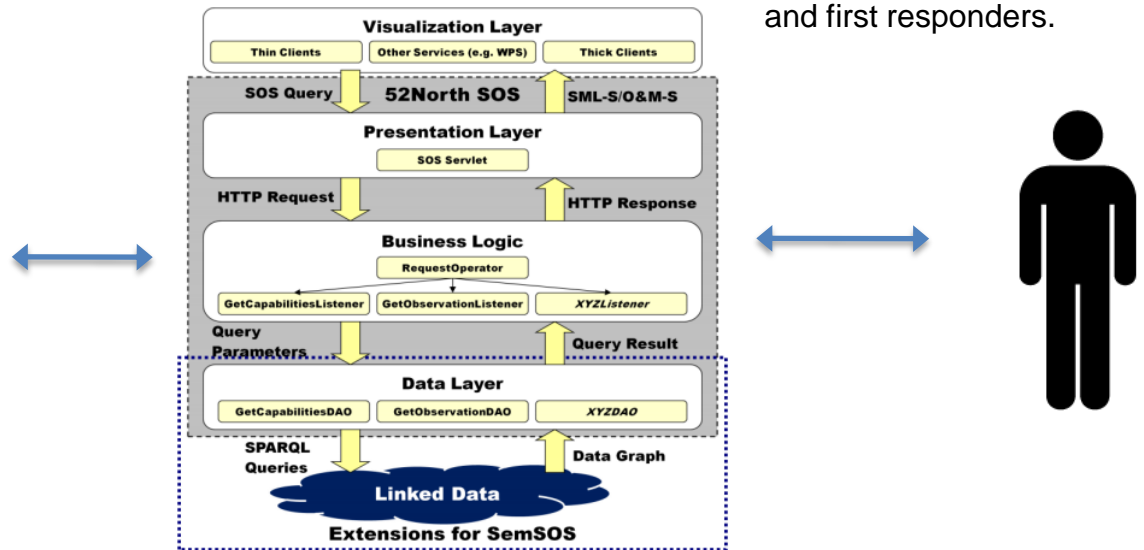
Mobile applications for data collection and reporting



Raw sensor observations



Abstractions that are intuitive to decision makers and first responders.



SemSOS: Semantic analysis and reasoning over sensor observations



Linked Open Data

SemMOB Visualization

Map showing sensor locations

Query interface

Sensors reporting observations in real-time

Timestamp	Device ID	Value
2012-07-16 06:47:31.965-0400	deb2afe6-2621-4...	1105.1122912199955
2012-07-16 06:47:31.243-0400	deb2afe6-2621-4...	678.1200879806466
2012-07-16 06:47:31.139-0400	deb2afe6-2621-4...	587.4054380628211
2012-07-16 06:47:31.038-0400	deb2afe6-2621-4...	412.37900777499397
2012-07-16 06:47:28.938-0400	deb2afe6-2621-4...	977.528834575707
2012-07-16 06:47:28.257-0400	deb2afe6-2621-4...	815.840112889915
2012-07-16 06:47:28.143-0400	deb2afe6-2621-4...	397.4273193804458
2012-07-16 06:47:28.046-0400	deb2afe6-2621-4...	227.20892611263469
2012-07-16 06:47:25.439-0400	deb2afe6-2621-4...	1001.0916727249621
2012-07-16 06:47:25.283-0400	deb2afe6-2621-4ecf-8d13-9c58b8c752f	823.6418845680795
2012-07-16 06:47:25.156-0400	deb2afe6-2621-4ecf-8d13-9c58b8c752f	472.76663724514594
2012-07-16 06:47:25.038-0400	deb2afe6-2621-4ecf-8d13-9c58b8c752f	406.22406645027536

Authentication Screen

Sensors reporting observations to SemSOS

Sensor Status

Location
Current Reading: (39.7773435, -84.0657948)

Oxygen
Current Reading: 219.12797617546738ppm

References

- [1] <http://www.w3.org/2005/Incubator/ssn/ssnx/ssn>
<http://www.w3.org/2005/Incubator/ssn/wiki/SSN>
<http://www.w3.org/2005/Incubator/ssn/XGR-ssn-20110628/>
- [2] Masolo, C., Borgo, S., Gangemi, A., Guarino, N., Oltramari, A., Schneider, L., WonderWeb Deliverable D17. The WonderWeb Library of Foundational Ontologies and the DOLCE ontology, Preliminary Report (ver. 2.0, 15-08-2002).
- [3] [http://www.w3.org/2005/Incubator/ssn/wiki/Sensor Discovery on Linked Data](http://www.w3.org/2005/Incubator/ssn/wiki/Sensor_Discovery_on_Linked_Data)
- [4] Cory Henson, Josh Pschorr, Amit Sheth, Krishnaprasad Thirunarayan, 'SemSOS: Semantic Sensor Observation Service', In Proceedings of the 2009 International Symposium on Collaborative Technologies and Systems (CTS 2009), Baltimore, MD, May 18-22, 2009.
- [5] GeoNames web service and ontology:
<http://www.geonames.org/ontology/documentation.html>
- [6] RDF triple stores: OpenRDF Sesame (<http://www.openrdf.org/>) and Virtuoso open source edition (<http://virtuoso.openlinksw.com/>).