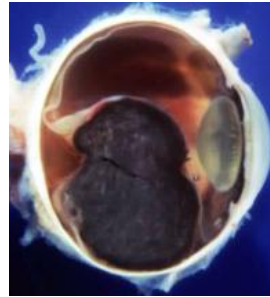


HIGH PTP4A3 PHOSPHATASE EXPRESSION CORRELATES WITH METASTATIC RISK IN UVEAL MELANOMA

- Most common intraocular malignancy
- 500-600 new cases
- Institut Curie : largest french center for recruitment and treatment

General Informations



- No effective adjuvant treatment
- Median time metastasis occurrence: 3 years
- Median survival time: 6 months

Clinical Aspects

Aim of the study:
Find molecular markers associated with metastasis development

- 4-5% of all melanomas
- Derived from neural crest produced melanocytes
- Comparison with skin melanoma:
≠ clinical behaviour
≠ molecular biology

Biological Aspects

MATERIAL & METHODS

Patients cohort



Enucleated between
1995/11/06 and 2004/02/18
Follow-up 24 months
Clinical description validated

transcriptome → **63**

genome → **86**



Affymetrix®
Human Genome
U133 Plus 2.0 Arrays

CGH BAC home-made
Resolution 1Mb

47 in common

RESULTS

PTP4A3

- Localized on 8q24.3
- Contains a tyrosine-protein phosphatase domain
- Implicated in cell invasion and in proliferation
- *In vitro* and *in vivo* validation

