



Big Data In Ireland Linked Data and beyond

Prof. Stefan Decker

© Copyright 2011, Digital Enterprise Research Institute. All rights reserved.



Enabling **networked** knowledge



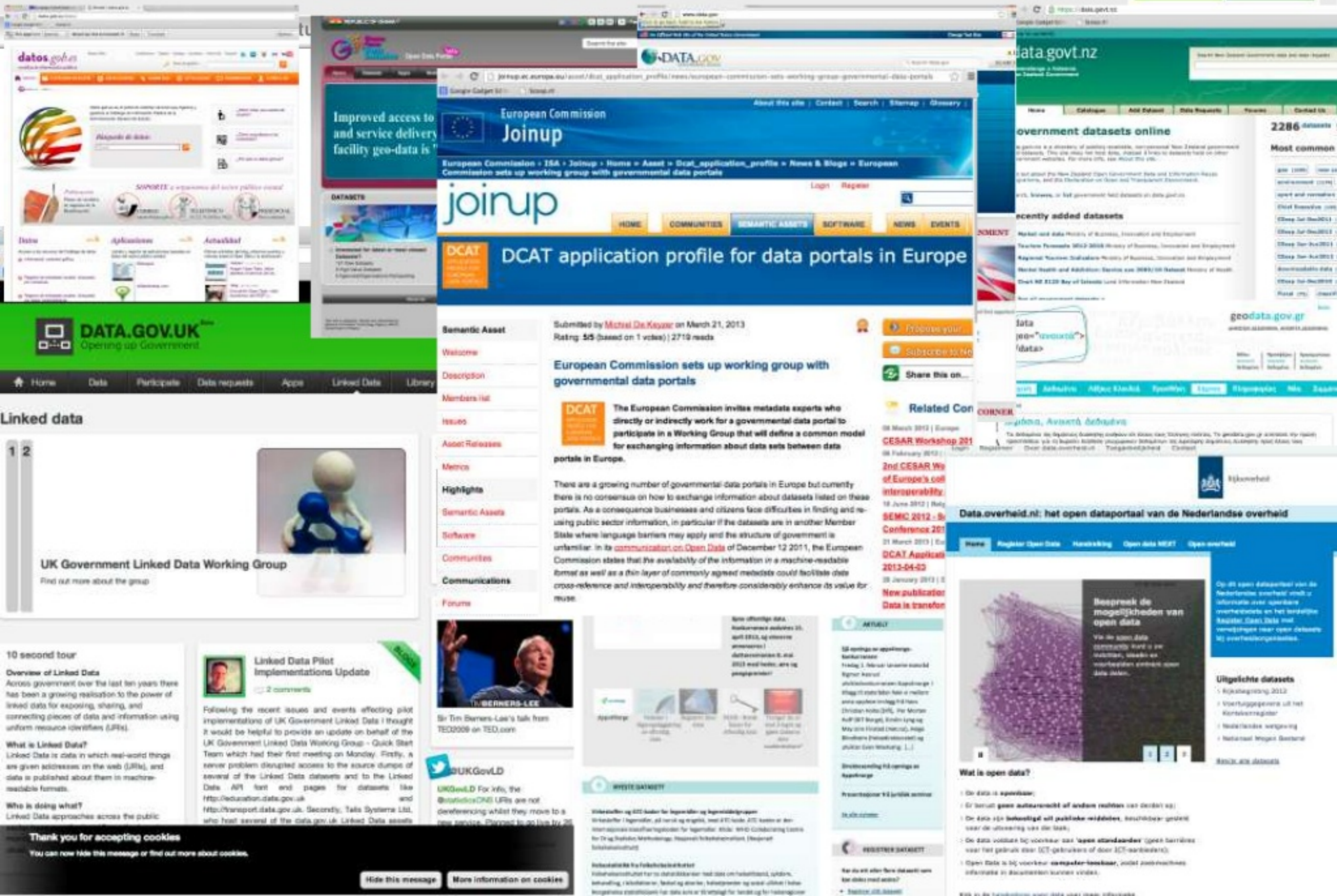
A Network of Knowledge



- Interconnected
- Universal
- All encompassing



- assists humans, organisations and systems with problem solving
- enabling innovation and increased productivity



datos.gov.es

DATA.GOV.UK
Opening up Government

data.govt.nz

geodata.gov.gr

joinup
European Commission
Improved access to and service delivery facility geo-data is

DCAT application profile for data portals in Europe

Submitted by **Michel De Kogge** on March 21, 2013
Rating: **5/5** (based on 1 votes) | 2710 reads

European Commission sets up working group with governmental data portals

The European Commission invites metadata experts who directly or indirectly work for a governmental data portal to participate in a Working Group that will define a common model for exchanging information about data sets between data portals in Europe.

There are a growing number of governmental data portals in Europe but currently there is no consensus on how to exchange information about datasets listed on these portals. As a consequence businesses and citizens face difficulties in finding and re-using public sector information, in particular if the datasets are in another Member State where language barriers may apply and the structure of government is unfamiliar. In its [communication on Open Data](#) of December 12 2011, the European Commission states that the availability of the information in a machine-readable format as well as a thin layer of commonly agreed metadata could facilitate data cross-reference and interoperability and therefore considerably enhance its value for reuse.

UK Government Linked Data Working Group
Find out more about the group

10 second tour
Overview of Linked Data
Across government over the last ten years there has been a growing realisation to the power of linked data for exposing, sharing, and connecting pieces of data and information using uniform resource identifiers (URIs).

Linked Data Pilot Implementations Update
Following the recent issues and events affecting pilot implementations of UK Government Linked Data I thought it would be helpful to provide an update on behalf of the UK Government Linked Data Working Group - Quick Start Team which had their first meeting on Monday. Firstly, a server problem disrupted access to the source dumps of several of the Linked Data datasets and to the Linked Data API text and pages for datasets like <http://education.data.gov.uk> and <http://transport.data.gov.uk>. Secondly, Talls Systems Ltd, who host several of the data.gov.uk Linked Data assets

UKGovLD
UKGovLD For info, the @data.gov.uk URIs are not dereferencing whilst they move to a new provider. Checked to go live by 25

WAT IS OPEN DATA?
De data is openbaar.
Er wordt geen auteursrecht of andere rechten van derden op de data.
De data is in het bezit van de publieke sector, beschreven, geordend naar de uitwerking van de zaak.
De data voldoen bij voorkeur aan open standaarden (open formats) voor het gebruik door ICT-gebruikers of door ICT-werknemers.
Open Data is bij voorkeur computer-toegankelijk, zodat zoekmachines informatie in databases kunnen vinden.

Uitgelichte datasets
Rijksoverheid 2012
Voortgangrapport van het Koninkrijk
Nederlandse verspreiding
Nationaal Wegen Gebruik

Thank you for accepting cookies
You can now hide this message or find out more about cookies.

pro.europeana.eu/linked-open-data

Google Gadget Editor | Scoop.it

Home | About us | Press & Events | Projects | Europeana Foundation | Europeana Network

Provide data | Re-use data

Re-use data

API services

→ Linked Open Data

- In brief
- Tech details
- Datasets
- Credits
- Case studies
- Cultural Commons
- Hackathons
- ThoughtLab

data.europeana.eu

EUROPEANA LINKED OPEN DATA (LOD)

The metadata for the 25 million objects in the Europeana portal is all open, in that it

DEUTSCHE NATIONAL BIBLIOTHEK

English | Kontakt | A-Z | Förderer | Datenschutz | Impressum | Hilfe

LEIPZIG FRANKFURT

Home // Service // Digitale Dienste // Linked Data Service

LINKED DATA SERVICE DER DEUTSCHEN NATIONALBIBLIOTHEK

Die Entwicklungen im Bereich Semantic Web zielen darauf ab, semantische Strukturen nachnutzbar und Daten besser zugreifbar zu machen. Des Weiteren erlauben die Konzepte des Semantic Web, Daten aus heterogenen Quellen miteinander zu verknüpfen, was eine Etablierung neuer Dienstleistungen mit sich führt. Im Zuge der Linked-Data-Bewegung bieten bereits eine Vielzahl von Anbietern (meist gemeinnützige Organisationen, Universitäten oder öffentliche Einrichtungen) ihre Daten in einer Semantic-Web-konformen Repräsentation an. Zu diesen Daten gehören insbesondere Daten, die von generellem Nutzen für die Allgemeinheit sind. Beispiele hierfür sind geografische Informationen, Thesauri, Lexika und auch

- Home
- Wir über uns
- Aktuell
- Kataloge
- Erwerbung
- Netzpublikationen
- Service
- Berufung
- Direktversand von

www.deri.ie

BIBLIOTECA NACIONAL DE ESPAÑA

Inicio | Catálogos | Colecciones | Servicios | Actividades | La Institución

Datos enlazados en la BNE

Fuentes de datos

Tecnología

Modelos (Ontologías)

Enlaces relacionados

Descarga de ficheros

datos.bne.es es un proyecto del Ontology Engineering Group (OEG) de la Biblioteca Nacional de España, enriquecimiento de la Web Semántica con datos bibliográficos provenientes de su catálogo. Esta iniciativa se ha puesto en marcha con la publicación, con los principios de Linked Data, de un conjunto de datos procedentes de los catálogos de la BNE, haciéndolos disponibles en un formato RDF (Resource Description Framework). Además, estos datos se interrelacionan con otras bases de conocimiento existentes en la BNE a través de los principios de Linking Open Data. De esta manera, España se suma a las pruebas de instituciones como la British Library y la Deutsche Nationalbibliothek que han comenzado recientemente.

Los datos están publicados de acuerdo a las especificaciones de la licencia Creative Commons Zero (CC0)

data.nytimes.com

Google Gadget Editor | Scoop.it

The New York Times

Linked Open Data

OCLC

Search

Support & Training | Log in to Services | Contact Us | Librarians Toolbox

...e.com linked data

data.nytimes.com

For the last 170 years, The New York Times has a rich history of publishing this vocabulary as link

The Data

As of 13 January 2010, The New York Times has a rich history of publishing this vocabulary as link

Type	Manually Map
People	4,378
Organizations	1,469
Locations	1,910
Descriptions	408

Browse individual data records:

A B C D E F G H I J K L

SKOS Files

Download all of the data records as SKOS Files.

WorldCat

A global library resource

WorldCat community

WorldCat knowledge base

Linked data at OCLC

- Community
- Data sets & services
- Latest news
- Data licenses & attribution

Why WorldCat

to data.nature.com

Triple count: 319,590,481 (319.5 million)

Nature.com Data Platform provides access to datasets from NPG published as made available through SPARQL services. Two different interfaces are available: /sparql – a form interface for interactive queries, and /sparql – a service interface for programmatic queries. Alternatively, use the search box below to enter a plain text search term.

Search term: Search

on, demos and data snapshots for downloading are available on the developers portal.

BIO2RDF

Select an ID example

Linked Data on Climate Change

tags: bonn climate change climate data Germany International Linked data LOD workshop
Posted by tonzijlstra on 20 May 2012

From the REEEP International secretariat:


Climate and development websites have blossomed in the past few years. Not only are organisations publishing their own information online, but many have become online "knowledge brokers" who are hosting portals that pull together climate and development information from many sources.

A second annual Climate Knowledge Brokers workshop was hosted by the GIZ (Deutsche Gesellschaft für Internationale Zusammenarbeit) and CDKN (Climate and Development Knowledge Network) on 19th and 20th May in Bonn.

Some 41 participants from 30 different climate-related organisations participated in the workshop to find new ways of linking up, sharing technologies, and making the online climate and development landscape more user-friendly.

At the event Linked Open Data was a central topic, and the challenges of making datasets open and available in machine readable formats was underlined at the workshop by Florian Bauer, REEEP's Director of Operations in charge of the reeeg website. "In a world where the amount of available data is exploding, linking data from trusted and reliable sources is a critical factor to create resources that developing country policy-makers can rely on," said Bauer, "and we're looking forward to assisting other organisations faced with this same challenge."

Share / Save 

0 comments  0

Comments for this thread are now closed.

WELCOME

The mission of UniProt is to provide the scientific community with a comprehensive, high-quality and freely accessible resource of protein sequence and functional information.

What we provide

- UniProtKB** Protein knowledgebase, consists of two sections:
 - Swiss-Prot, which is manually annotated and reviewed
 - TrEMBL, which is automatically annotated and is not reviewed
 Includes [complete and reference proteome sets](#).
- UniRef** Sequence clusters, used to speed up sequence similarity searches.

NEWS

UniProt release 2013_04 - Apr 3, 2013
Major progress in adenovirus annotation | Removal of MEDLINE identifiers

- Statistics for UniProtKB
- Swiss-Prot - TrEMBL
- Forthcoming changes
- News archive

403 followers

SITE TOUR

Your Gateway to the World's Energy Information and Data

Share this page on 

Follow OpenEI on: 

buildings geothermal hydrogen smart grid solar utilities water wind

Find Energy Resources

by region



by type

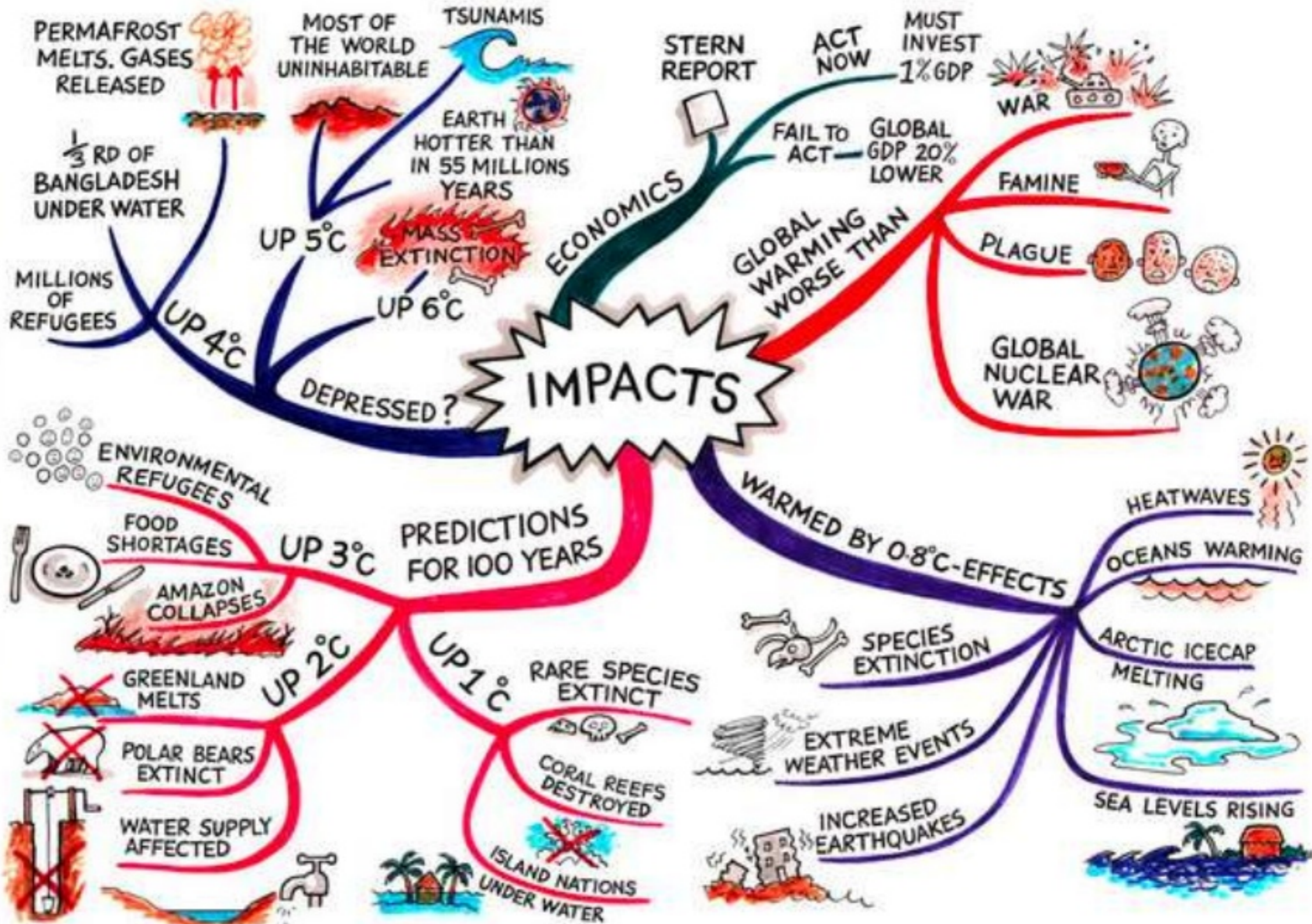
datasets, docs, maps | updates from the community | developer resources

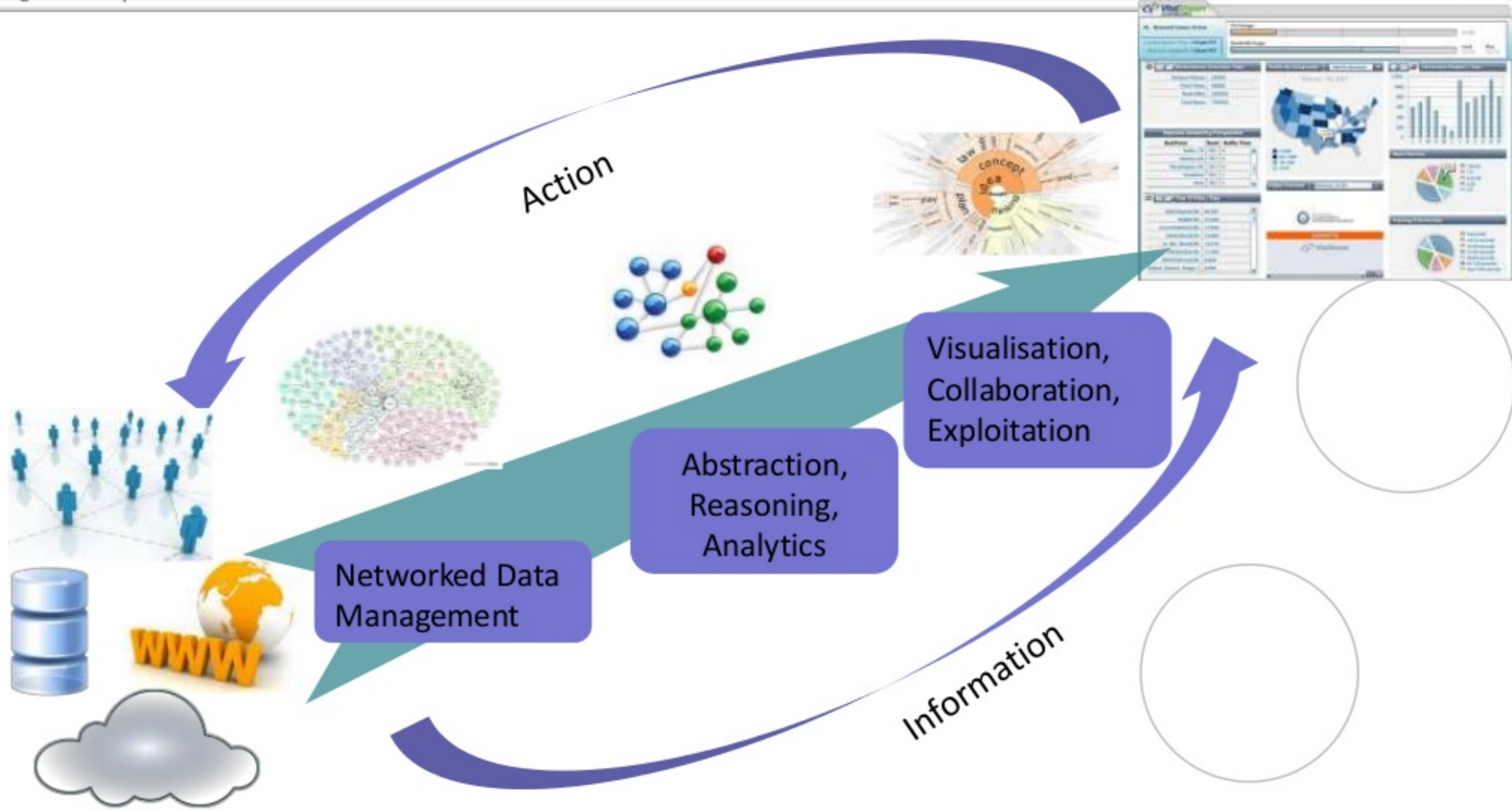
Recent Community Activity

- Blog: New Result Formats on OpenEI
- Groups: RTG
- Discussions: Quarterly Smart Grid Data available for download on OpenEI
- Twitter: OpenEI maintenance March 8-9, 2013
- Videos: Colorado Meeting
- Open Government

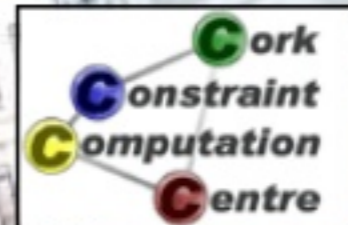


How to make sense?





INSIGHT – Ireland's Big Data Research Centre



Right time. Right centre. Right place.

Right Centre, Right Time – Why Insight?

✓ A Decade of Basic Research Funding

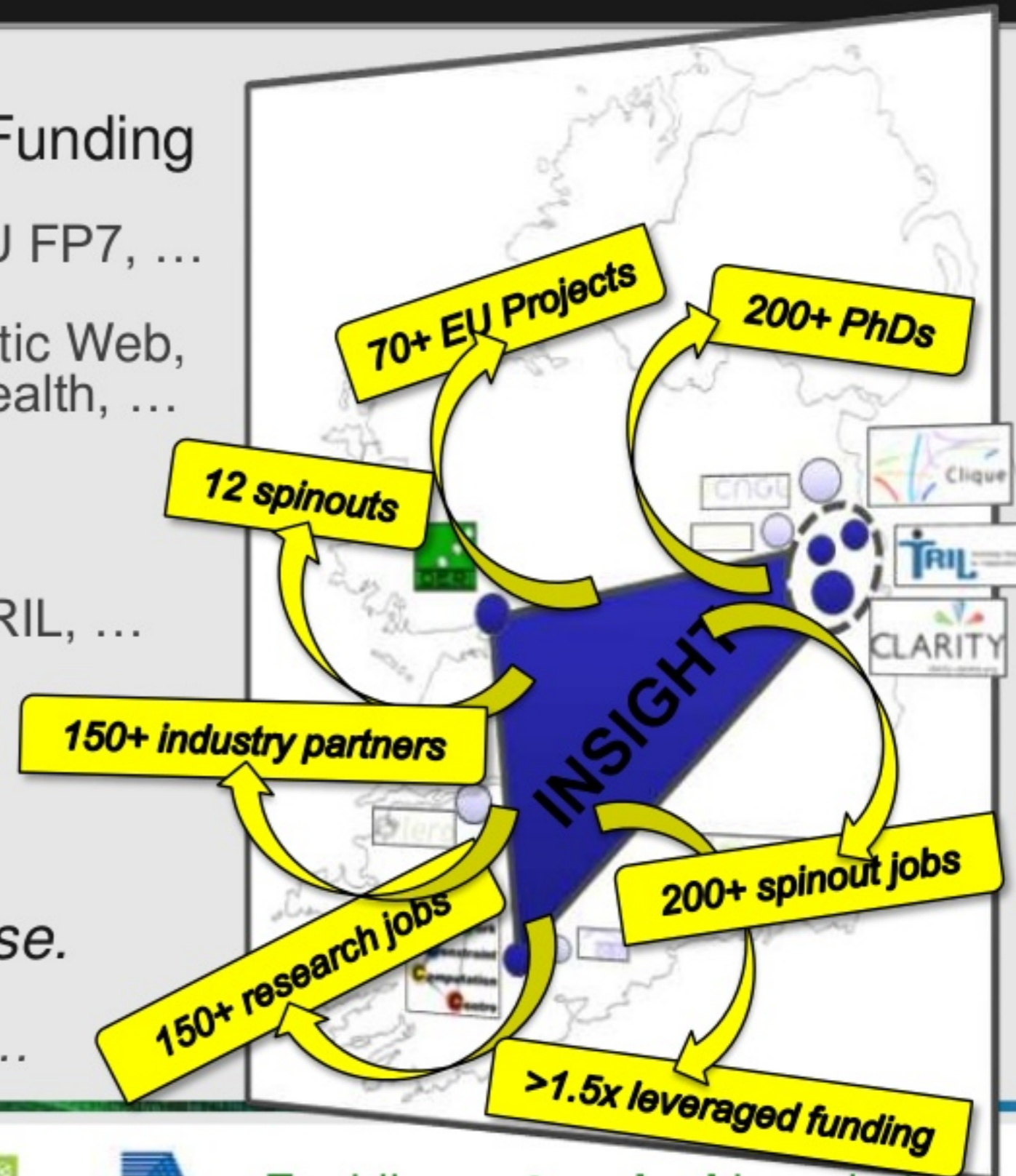
- Science Foundation Ireland, EU FP7, ...
- Core competency in AI, Semantic Web, the Sensor Web, Connected Health, ...

✓ Leading Research Centres

- DERI, CLARITY, 4C, Clique, TRIL, ...
- UCD, NUIG, UCC, DCU
- plus TCD, NUIM, RIA, TNI

✓ Ready-To-Go & Fit-For-Purpose.

- 60+ PIs/FIs, 300 researchers, ...



Right Place - Why Ireland?

✓ National Strategic Alignment

- Prog. for Government & Research Prioritisation
- Natural evolution of CSETs and SRCs.
- EI Centres (Data Analytics & Connected Health)

✓ Vibrant Industry Sector

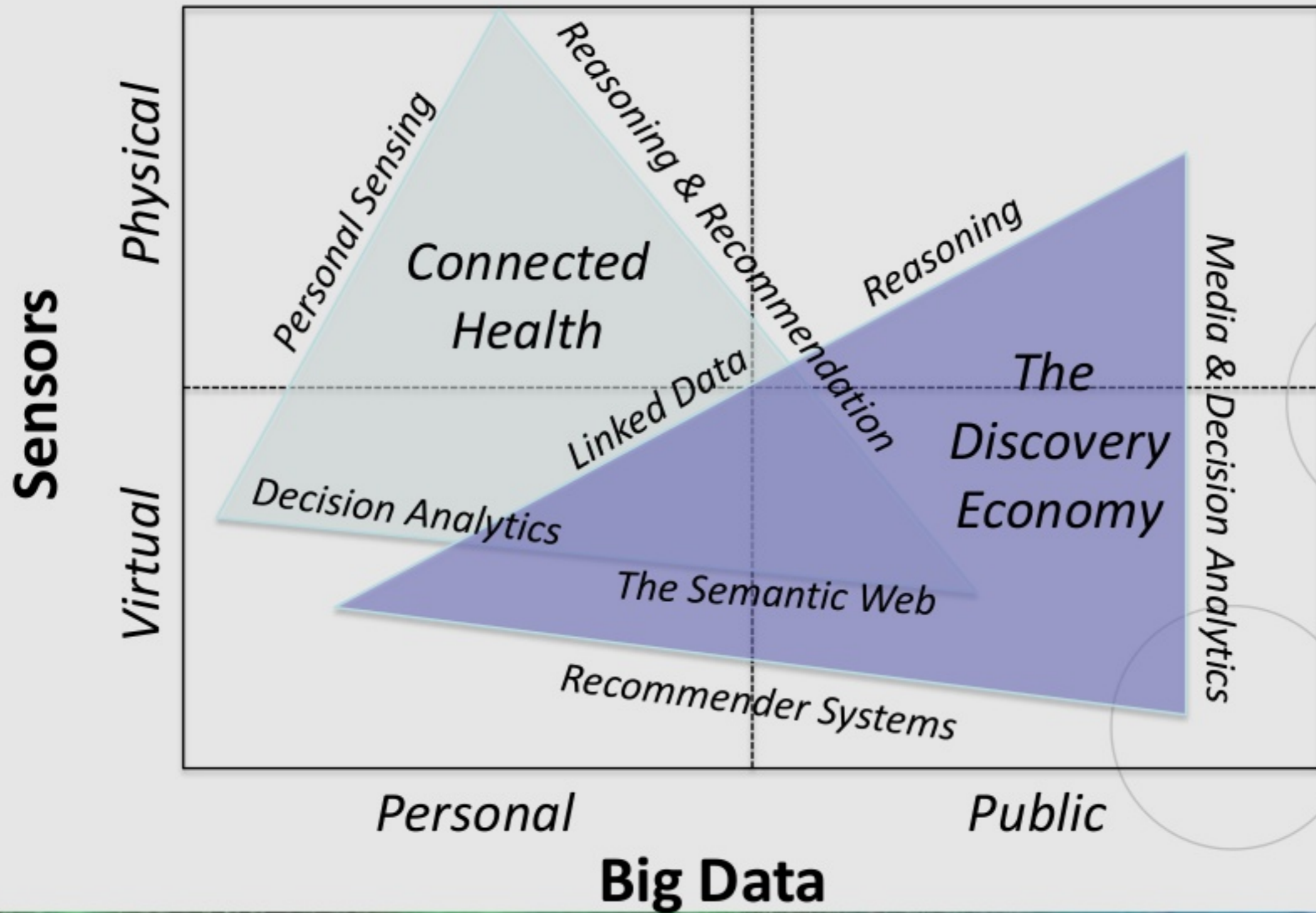
- MNCs, SMEs, Startups
- Transforming service oriented industry.

✓ INSIGHT Partners

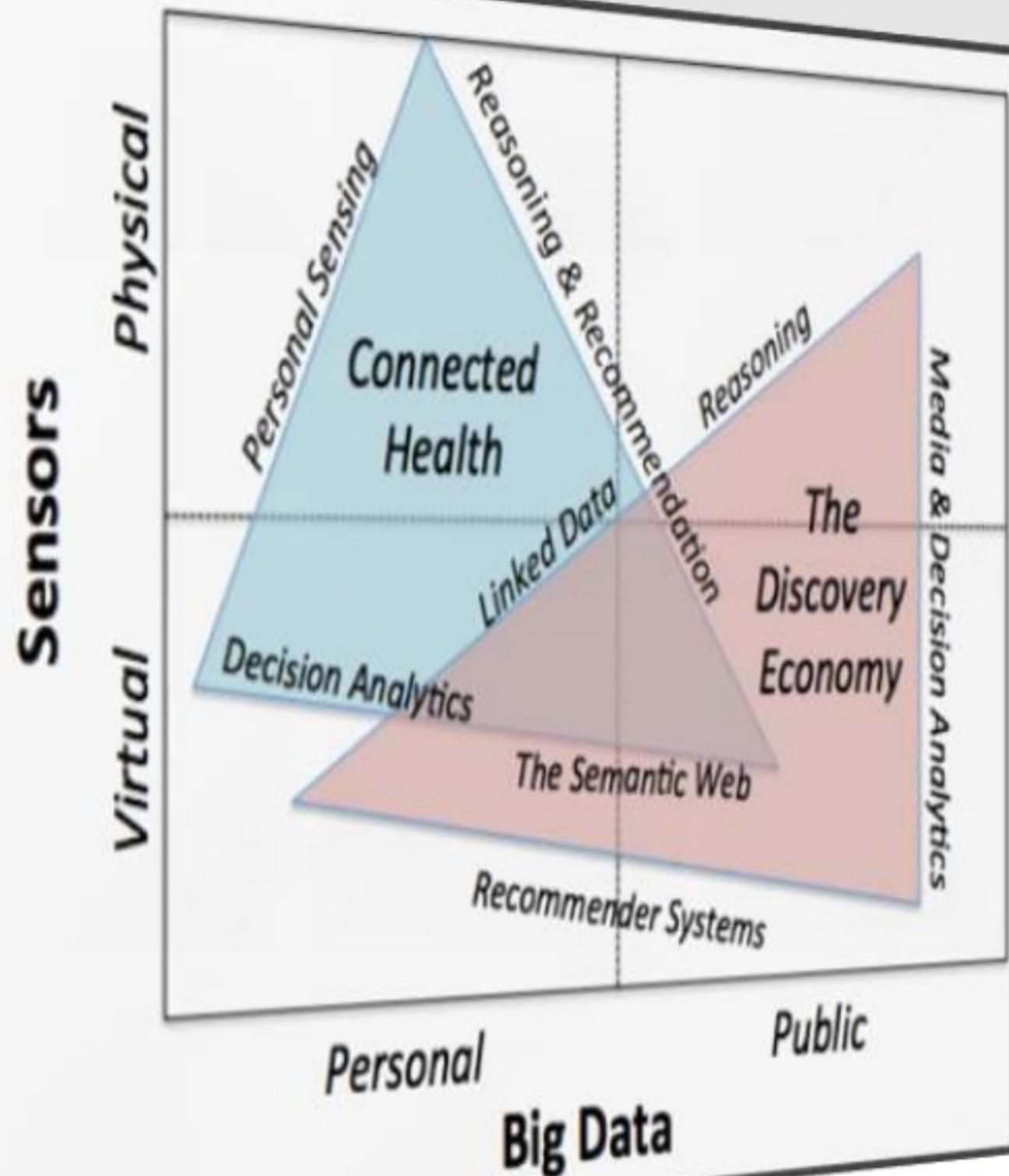
- 30+ engaged industry partners.
- €30m contribution to budget.



Research Program



Application Focus



✓ Connected Health

- Novel Personal Sensing
- Lincor, Vitalograph, BiancaMed, UCB Pharma...
- Personalized treatment plans.

✓ The Discovery Economy

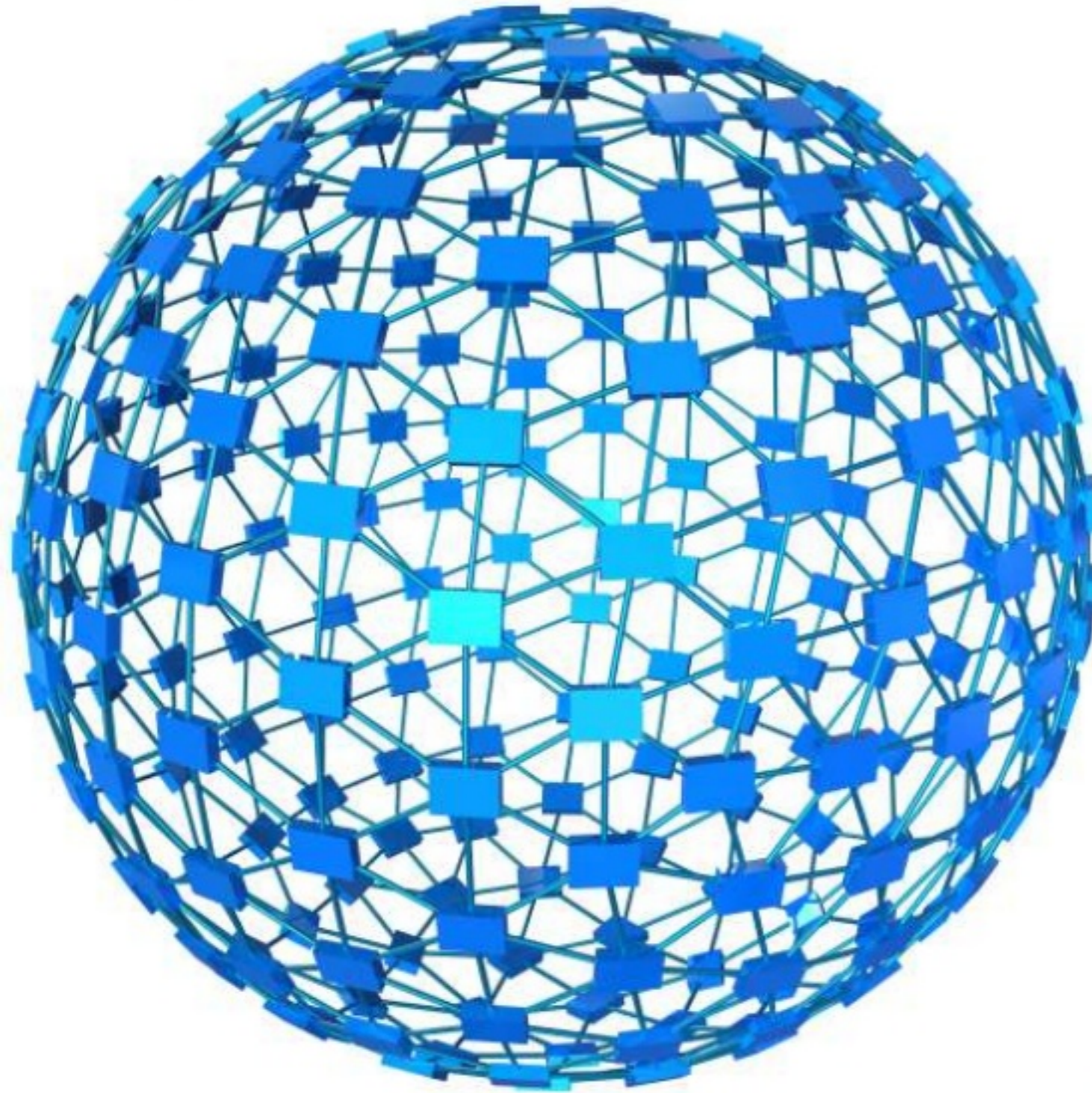
- The Future of News
- Elsevier, the Irish Times, Storyful,...
- Transforming information discovery.



***A Platform Technology
for Transforming
Society & Industry***



A Network of Knowledge is more than just data...



- It is people, communities...



- And then it assists humans, organisations and systems with problem solving
- enabling innovation and increased productivity