

# THE INSTITUTIONAL ACT

Close,

Closer

# WHAT IS AN INSTITUTIONAL ACT?

LISBON ARCHITECTURE TRIENNALE

z33

LIGA

00:/

STOREFRONT FOR ART AND ARCHITECTURE

[Close,](#)

[Closer](#)

# THE LISBON ARCHITECTURE TRIENNALE

BEATRICE GALILEE  
LIAM YOUNG  
MARIANA PESTANA  
JOSE ESPARZA CHONG CUY  
DANI ADMISS  
ZAK GROUP

[Close,](#)

[Closer](#)

# 12 SEPT - 15 DEC 2013

**3 EXHIBITIONS  
1 PUBLIC PROGRAMME  
1 EDUCATION PROGRAMME  
10 CRISIS BUSTER GRANTS  
6 E-BOOKS  
50+ ASSOCIATED PROJECTS  
3 AWARDS**

**Close,**

**Closer**

# TRIENAL HEADQUARTERS



Close,

Closer

# TRIENAL HEADQUARTERS



Close,

Closer

# THE INSTITUTE EFFECT

AN ARCHITECTURE EXHIBITION OF INSTITUTIONS

Close,

Closer

MUDE – Museu Design e Moda, Lisboa, Portugal



Close,

Closer





Close,

Closer



Close,

Closer



Close,

Closer

## Activities



Close,

Closer

## Workshops



Close,

Closer

# Discussions



Close,

Closer

# Screenings



Close,

Closer

# Library/Display area



Close,

Closer



## Rules of the Institute

To help shape the format of the exhibition each institute must abide by a set of 'Institute Rules'.

1. Create a public programme in The Institute
2. Donate a minimum of 5 items of reading material to The Institute Library
3. Display at least one audio/visual recording with caption
4. Leave a trace of your program in The Institute
5. Invent a rule for the following Institute

## Program

**001 Fabrica**

**002 Z33**

**003 RAUMExperimente**

**004 Strelka Institute**

**005 Design as Politics,**

**006 ETH**

**007 Spatial Agency**

**008 SALT**

**009 Casco,**

**010 Center for Urban Pedagogy**

**011 Storefront Art and Architecture**

**012 LIGA**

**013 JA**

**014 M+**

**015 Raw Material Company**

**Close,**

**Closer**

## Fabrica (IT)

### Institute of Institutes

#### Exhibition design + workshops

Fabrica will be the first institute of The Institute Effect. Through an experimental and forward thinking approach to design they will radically transform the exhibition space into the 'Institute of Institutes', re-envisioning everything from the exhibition set-up, to the communication and identity.

During the opening week they will host a series of workshops with Portuguese designers, inviting the audience to participate in different branding tasks.

Fabrica, Benetton's communication research centre, is an internationally renowned cultural institute. Best known for its innovative outlook it is a creative laboratory and studio for a community of inspiring young arts practitioners to realise innovative projects relating to industry.



Close,

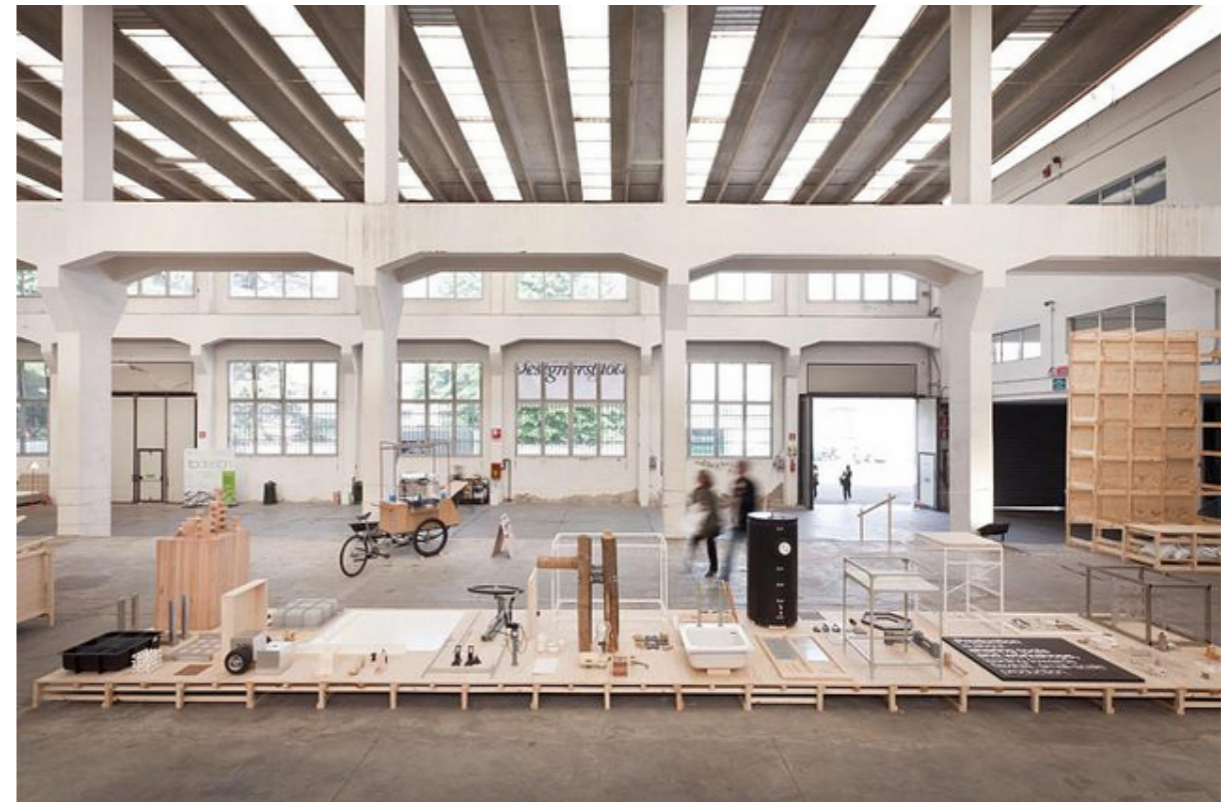
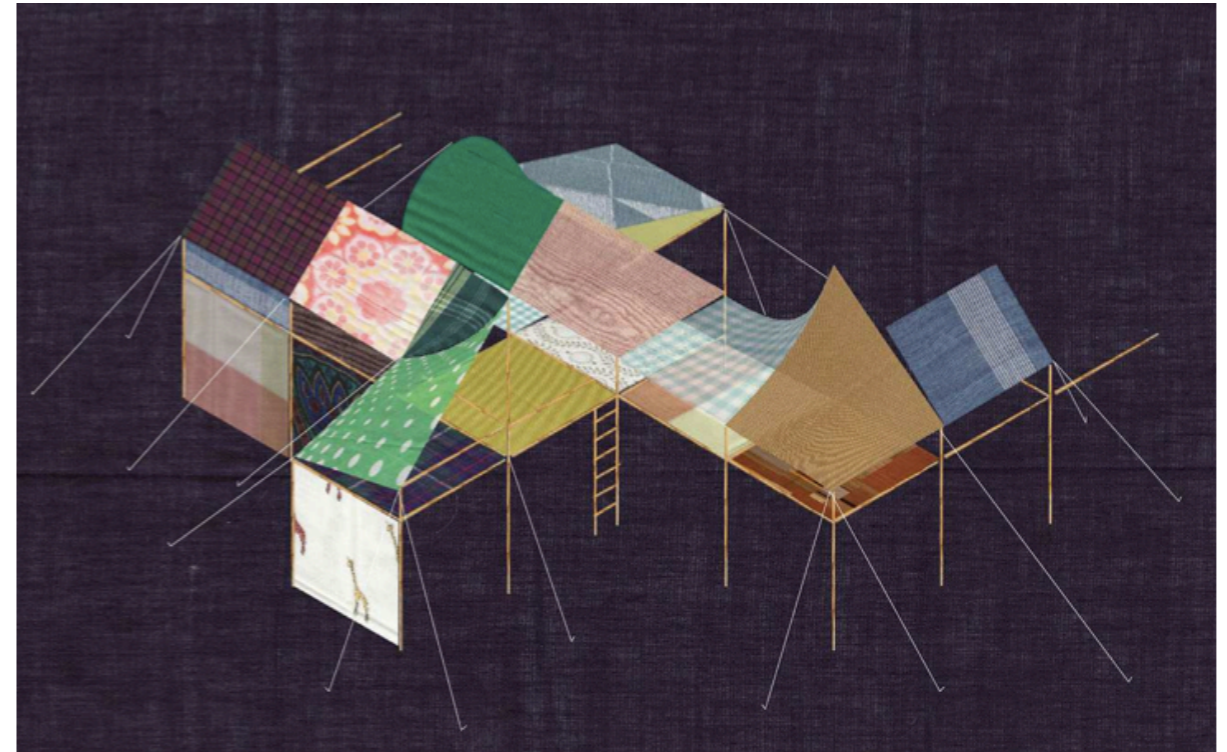
Closer

## OpenStructures Temporary Spaces, Thomas Lommée

### Workshop + presentation

Over five days 6 x Belgium and 6 x Portuguese architects, designers, engineers and researchers will be brought together in a workshop by Z33 and Thomas Lommée using his OpenStructures system – an open-source, modular building platform. This workshop explores the notion of Atelier à Habiter addressing the shifting boundaries of live-work spaces, via the modes of temporary shelters and refugee camps.

Z33 is a unique institution providing topical and engaging temporary exhibitions and operating across the intersections of both art and design. Housed and named after the historical site Zuivelmarkt 33 Z33 is now celebrating it's 10th year. In addition Z33 runs an innovative public art program bringing large-scale public art to areas of Belgium and have curated numerous prestigious exhibitions for external parties across Europe.



Close,

Closer

## Spaces of Intimacy

Micro-events, including a walk, discussion, shared meal, screening and workshop

Addressing and generating spaces of intimacy and using art and art education to engage the city through archives, interactions, and performances, the Institut für Raumexperimente will curate a series of micro-projects over the course of 2 days. The result, a multi-faceted series of lectures, workshops and experiments.

The Institut für Raumexperimente (Institute for Spatial Experiments) is an ambitious and radical educational research project. Led by the internationally acclaimed artist Prof. Olafur Eliasson, as part of the College of Fine Arts at the Berlin University of the Arts (UdK), Raumexperimente rejects outmoded pedagogical traditions, for a more contemporary educational setting.

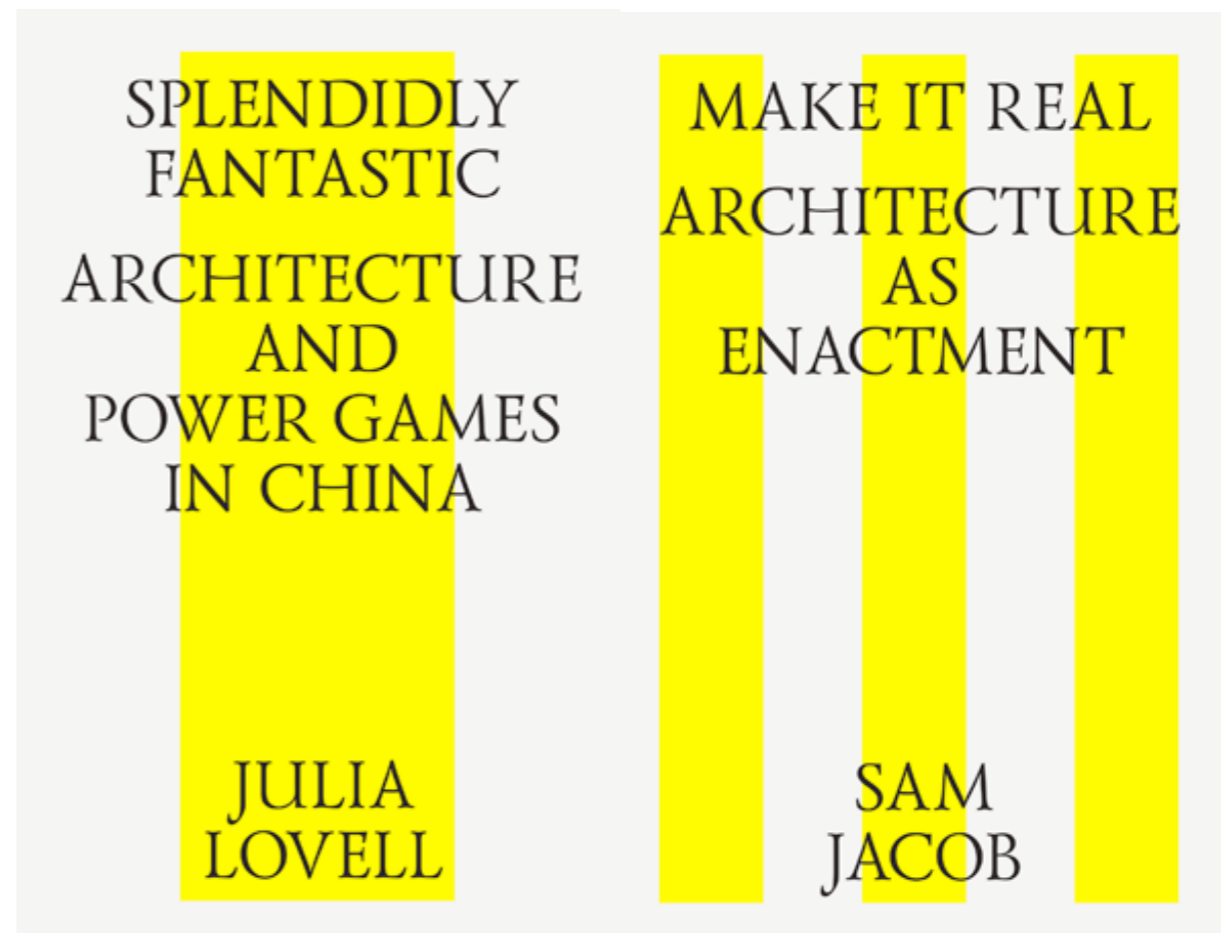
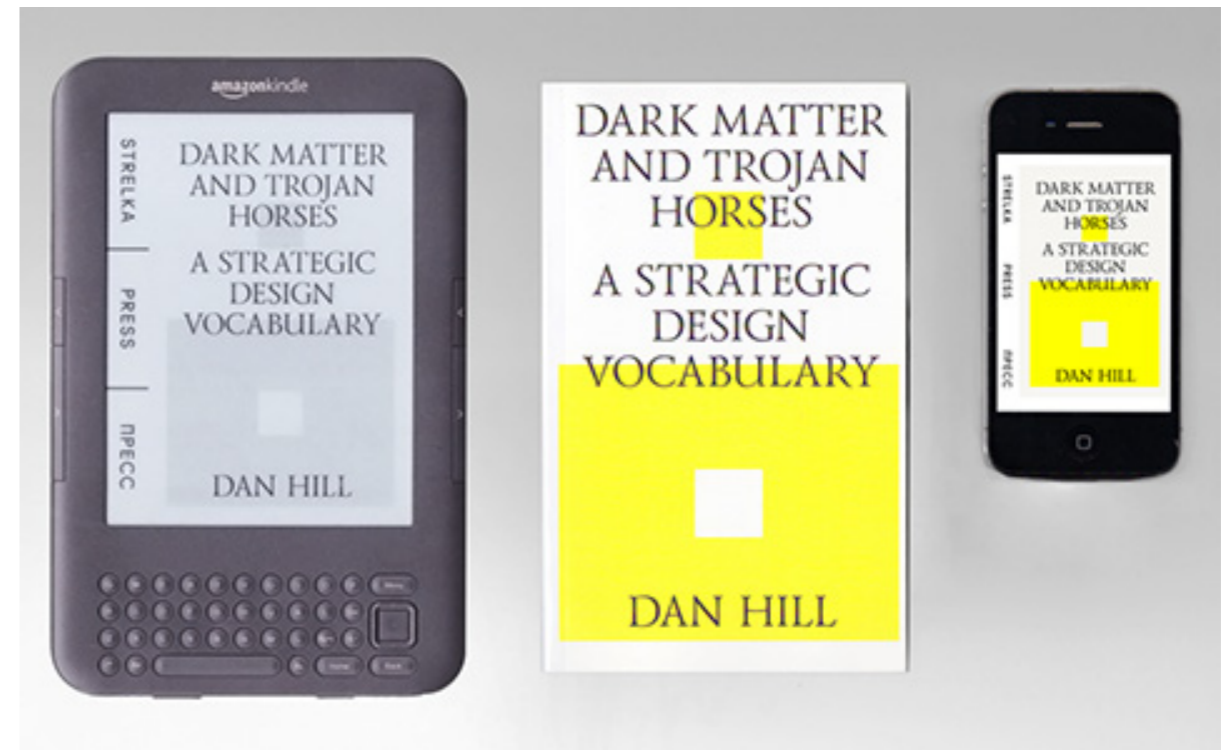


## Strelka Institute (RU)

### Presentation and workshop

Strelka Press is the publishing arm of Strelka Institute for Media, Architecture and Design and is a radical publishing house for new writing on architecture, design and the city.

They are a digital-first project, publishing essays and long-form journalism as ebooks. Their mission is to be a crossroads for critical thinking from around the world. Based in Moscow and London, they believe that by providing a platform for international debate they can be a tool for change in Russia.



Close,

Closer

### We The People

Exhibition + public talk-presentation

In representative democracy the most symbolic object is the voting booth. Timed to coincide with the Lisbon mayoral elections, Design as Politics will host an alternative election campaign, making use of the voting booth as an interactive tool within the electoral liturgy, half way between the secrecy of a confession and the sanctity of exercising a right.

Using the theme of democracy their campaign will consist of a series of 16 scenarios, based on the European city, encouraging the people of Lisbon to exercise their right to vote!

Initiated by the Dutch ministry of Infrastructure and Environment (Ministerie van Infrastructuur en Milieu) and housed within the faculty of architecture at the Delft University of Technology, the chair of Design as Politics is exploring, researching and defining the boundaries, commonalities and tensions between the fields of politics and design.



[Close,](#)

[Closer](#)

## Urban Think Tank, U-TT (CH, CA, US)

Gran Horizonte: Architecture at 24 Frames per Second

Movie-making workshops + presentation

Urban Think Tank, U-TT, will splice together their entire filmography to create an epic montage screened continuously over the course of 24 hours. Set to coincide with Doc Lisboa the film will become the backdrop for an impromptu series of talks and interventions.

The philosophy of U-TT is to deliver innovative yet practical solutions through the combined skills of architects, civil engineers, environmental planners, landscape architects, and communication specialists. Founded by Alfredo Brillembourg in Caracas, and joined later by Hubert Klumpner, their work concerns both theoretical and practical applications within architecture and urban planning. They were recently awarded the prestigious Golden Lion Award at the 2012 Venice Architecture Biennale.



Close,

Closer



## Spatial Agency (UK)

### The Institute of Radical Spatial Education

#### Action workshop

The aim of The Institute of Radical Spatial Education is to create a new and effective pedagogical agenda through spatial and collective working: 'action', rather than exhibition. In an invigorating action workshop resulting in a manifesto for future use, 30 local participants from a range of backgrounds and age-ranges will be brought together over this 3 day event.

The Spatial Agency is a pertinent and seminal project dedicated to exposing alternative approaches in architectural practice. It's comprehensive online database and book offer an insight into architecture alternatives, both in recent history and today. Initiated in 2006 by the renowned architect and educator Jeremy Till and senior lecturer at the School of Architecture Tatjana Scheider, the project elaborates on the users of architecture creating a discursive dialogue across the production of buildings and spaces.



Close,

Closer

## SALT (TR)

In situ qualitative

Talks series

In situ qualitative is a program on programs of SALT. It explores content created by the institution in an attempt to inspect the obscure ties behind the visibly diverse programmatic outputs. It will document the subjective nature of things, through insights provided by the makers and the consumers. As such, it is potentially a response to the evaluation of long term consistency of SALT's makings. On another level, the program puts a challenge on the discussion whether institutes are ever really more than the people who build them?

Based in Istanbul, Turkey, the cultural space, SALT, explores critical and timely issues in visual and material culture, and cultivates innovative programs for research and experimental thinking. Assuming an open attitude and establishing itself as a site of learning and debate SALT aims to challenge, excite and provoke its visitors by encouraging them to offer critique and response.



Close,

Closer

## Casco – Office for Art, Design and Theory (NL)

### Entanglement - A Topological Inquiry on Institution

Forum informed by a workshop

For The Institute Effect Casco will relocate it's ongoing project, Entanglement - A Topological Inquiry on Institution, to Lisbon. Organized as a 4 day series of public forums and closed workshops, with a select number of leading cultural thinkers, historians, educators, students and practitioners. Each forum is followed by a workshop, which aims to develop "new qualitative measuring systems" of cultural institutions.

Casco is an open and public action office space for critical inquiries and artistic imagination based in The Netherlands. It is dedicated to experimental and socially engaged art practices, whose working methods are collaborative and cross-disciplinary, hence traversing design and theory. The activities of the office encompass research, production, exhibitions, workshop, forum, debate, performance, screening, experimental curriculum and publishing.



Close,

Closer

## Center for Urban Pedagogy, CUP (US)

Power Points

Exhibition + presentation

The Center for Urban Pedagogy, CUP, will host an exhibition of their ongoing and pioneering graphics and poster campaign project, Making Policy Public using this as a starting point for a workshop on urban/civic policy in Lisbon.

A collaborative enterprise founded originally in 1997 the CUP is an exciting organisation communicating complex planning and policy issues to match community needs through the fields of art and design. CUP collaborate with educators, communities, developers and visual artists to create innovative and engaging projects, programs and tools for future use. Drawing from their ground-breaking projects realised during their 15 year history, they are now recognised internationally as an advocate for communities' needs.



Close,

Closer

# DON'T DRINK AND DRILL!

200,000 ACRES OF LAND HAVE ALREADY BEEN LEASED FOR DRILLING IN THE REGION.

H<sub>2</sub>Oh No!

NEW YORK CITY'S WATER SUPPLY IS IN TROUBLE!

8.2 MILLION NEW YORKERS GET THEIR DRINKING WATER FROM UPSTATE RESERVOIRS. THEY'RE ABOUT TO GET FRACKED.

Fracking is not allowed close to NYC's water supply. But the areas that feed water into the reservoirs, and the aqueducts that carry water to the city are not protected.

Fracking could permanently contaminate your drinking water.

Don't get fracked! Find out how to take action now at: [DamascusCitizens.org](http://DamascusCitizens.org)

Many laws that protect the public — like the Clean Air Act, the Clean Water Act, and Superfund — don't apply to oil & gas companies.

NYC's drinking water supply and foodshed are at risk from chemical runoff, spills, and underground contamination from fracking operations.

80% OF FRACKING CHEMICALS ARE LEFT UNDERGROUND WHERE THEY CAN LEAK INTO DRINKING WATER SUPPLIES.

Fracking works by forcing water and chemicals into the ground at extremely high pressure, and creating cracks to release the natural gas.

Water Sand Fracking Chemicals go down

Methanol Benzene 2-Butoxyethanol Naphthalene

Gas comes up

Radioactivity in the gas

DCS Damascus Citizens for Sustainability

CUP Center for Urban Pedagogy (CUP) [web.cometocup.org](http://web.cometocup.org)

Produced by Damascus Citizens for Sustainability, CUP, and Papercut.fr, with generous support from Saggi Ideas That Matter.

MAKING POLICY PUBLIC

# Stop Predatory Equity

# Save Affordable Housing

WHY ARE ALL OUR NEIGHBORS LEAVING?

RUSH TO BUY

SAVE OUR HOMES!

ORGANIZE!

FOLLOW THE MONEY!

REDUCE LOANS!

SHORT SALES!

ORGANIZE!

WE DEMAND TRANSPARENCY!

WHY ARE MY LIGHTS TURNED OFF?

SAVE OUR HOMES!

HOW HOME?

**To Do:**

**What Can You Do To Help Stop Predatory Equity?**

- FIND the tab that applies to you.
- TEAR OFF one of these and hang it up on your fridge.
- CHECK OFF the items one by one to help stop predatory equity.

**ADVOCATES & HOUSING EXPERTS**

- TEACH people about predatory equity.
- ORGANIZE people to help stop predatory equity.
- HANG this poster up where people can see it.

**BANKS**

- HELP rescue over-leveraged buildings.
- DON'T MAKE LOANS to predatory speculators.
- DON'T let it happen again.

**ELECTED OFFICIALS**

- PASS laws to save overleveraged buildings.
- PASS laws to stop predatory equity.
- While you're at it, PASS laws to save and expand affordable housing.

**MEDIA**

- TALK to people who know the facts.
- WRITE articles about what's going on.

**PREDATORY EQUITY INVESTORS**

- FIND some other way to make money.

**TENANTS**

- CONNECT with the coalition at [www.tandl.org](http://www.tandl.org).
- ORGANIZE other tenants in your building.
- TELL your elected officials to get moving.
- POST this poster up where people can see.

**INSTITUTIONAL INVESTORS**

- DON'T INVEST in predatory equity schemes.

MAKING POLICY PUBLIC

Close,

Closer

## Storefront, Art and Architecture (US)

In its 30th year, Storefront for Art and Architecture is one of the world's most innovative and iconic projects spaces. With a space in New York designed by Vito Acconci and Steven Holl, the institution is responsible for propelling the careers of architects, artists and writers. They have a publishing programme, a dynamic event programme and have contributed in a profound way to the culture of architectural and curatorial practice.



Close,

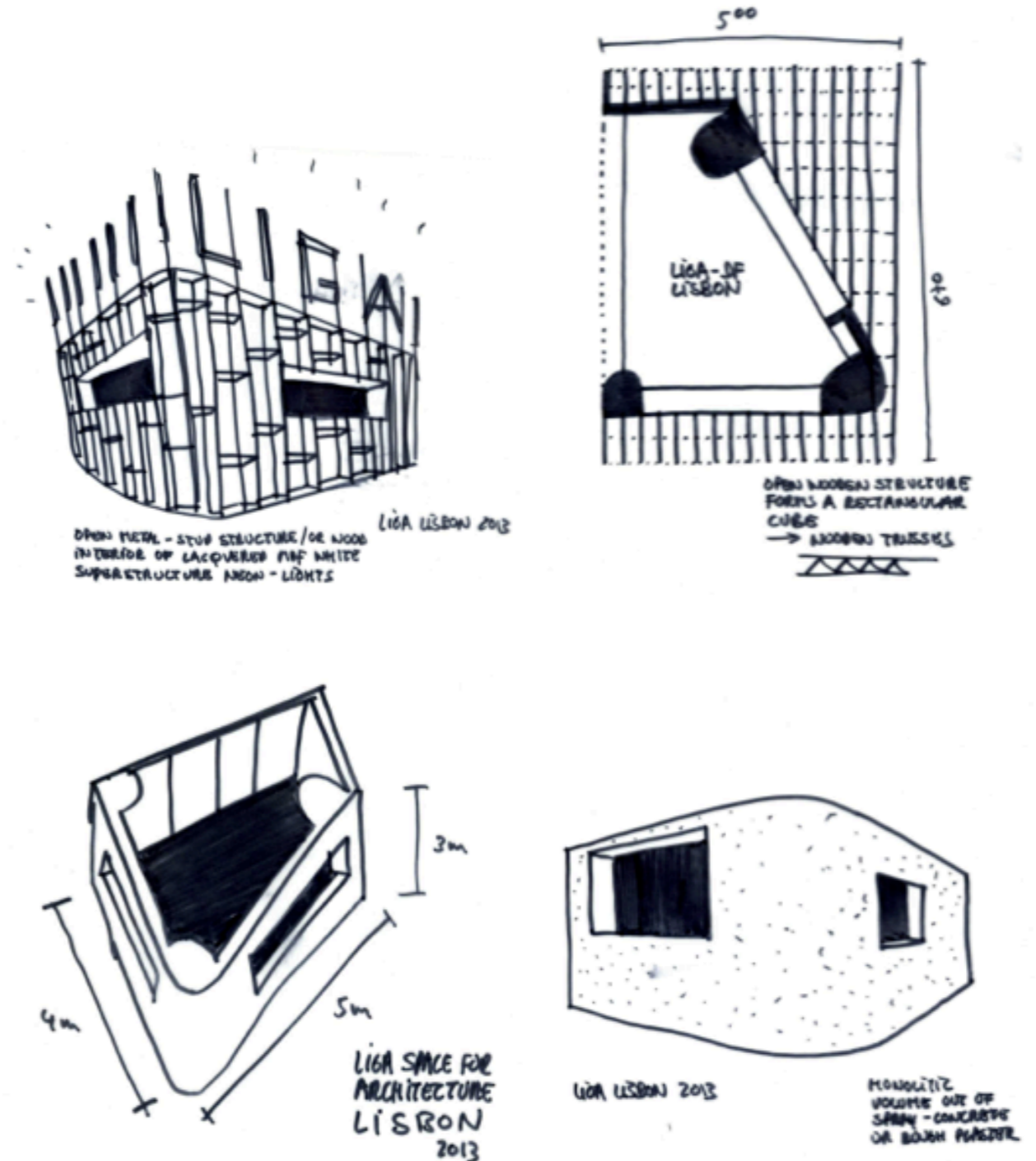
Closer

## LIGA 2

## Building and exhibition

LIGA wanted their activity to be an accurate reflection of what they do best, find and exhibit emerging Latin American architectural talent. As such, their ambitious project proposes to build at 1:1 scale the venue of LIGA and host an exhibition of a Mexican architect. It enables them to explore new formats and installations within the physical restraints of their relatively small exhibition space at LIGA. The exhibition will follow the exact format of past shows, including its constituent parts of a poster and commissioned essay and timed to coincide with an exhibition opening in Mexico.

LIGA, space for architecture, is an exciting exhibition platform in Mexico City established to promote the exchange of ideas and investigation on contemporary architectural practice in Latin America. It is a space of encounter to enhance the dialogue amongst professionals and those interested. We focus mainly on Latin America, but the space is open to other international proposals to expand contexts and open the debate.



Close,

Closer

## Jornal Arquitectos (PT)

### Critical report on The Institute Effect

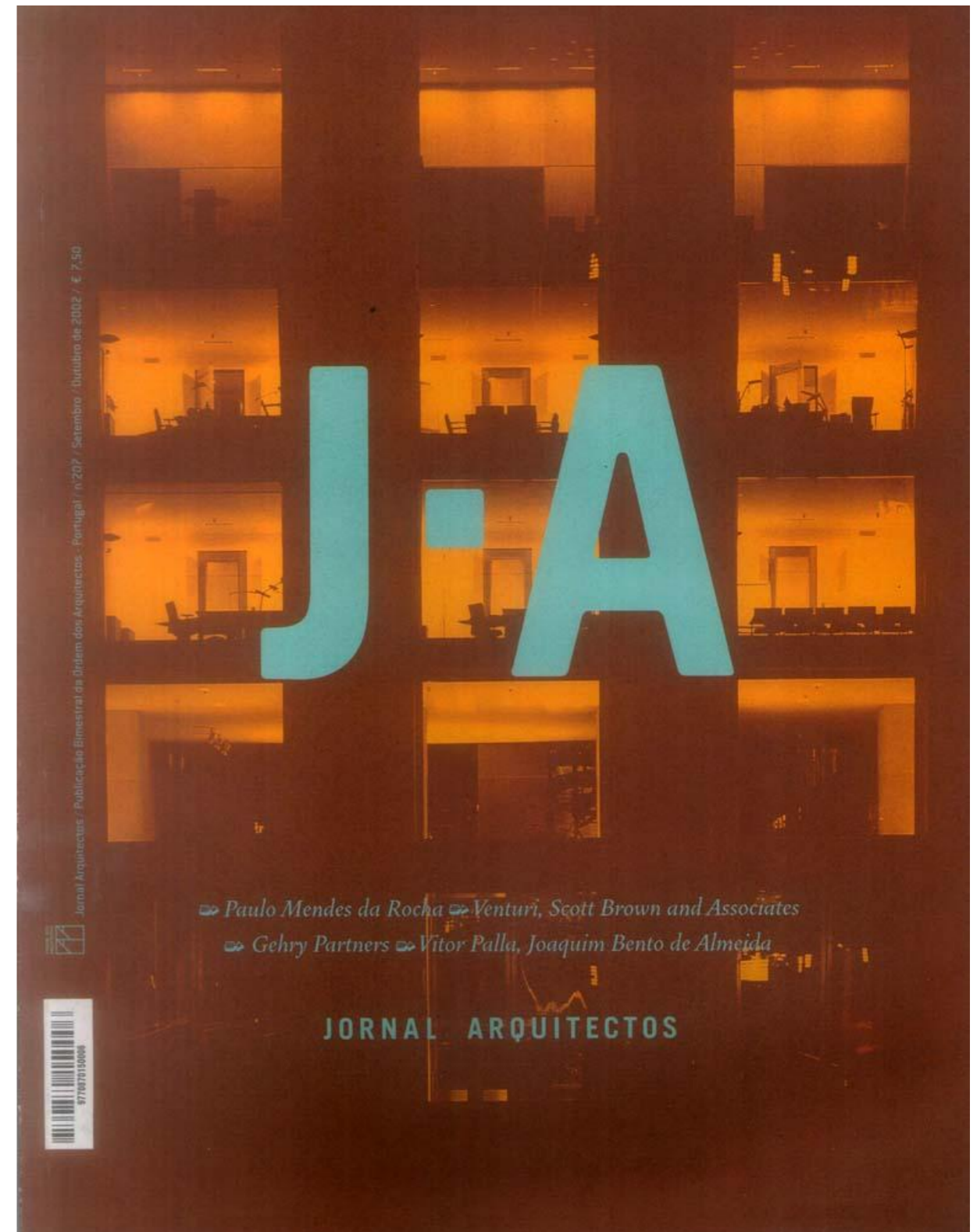
The last insitute of The Institute Effect will be Jornal Arquitectos, JA. Arriving in the aftermath of activities, their role is to forensically investigate the remains of what has past and what is left-over.

In a process of critical analysis, documentation and critique, the journalist staff at JA will respond providing critical comment on the show, preserving, archiving and assigning it to history for future visitors.

The exercise is meant as a creative and performative experiment in critical architectural writing - each journalist will be assigned an institute to investigate and report upon.

This will result in one edition of JA magazine, as well as a series of comments and clues displayed throughout the museum space for the remainder of the exhibition.

JA is a nationally-renowned architecture magazine read by architects all over Portugal.



Close,

Closer



# FUTURE PERFECT

AN ARCHITECTURE EXHIBITION ABOUT TECHNOLOGY

Close,

Closer

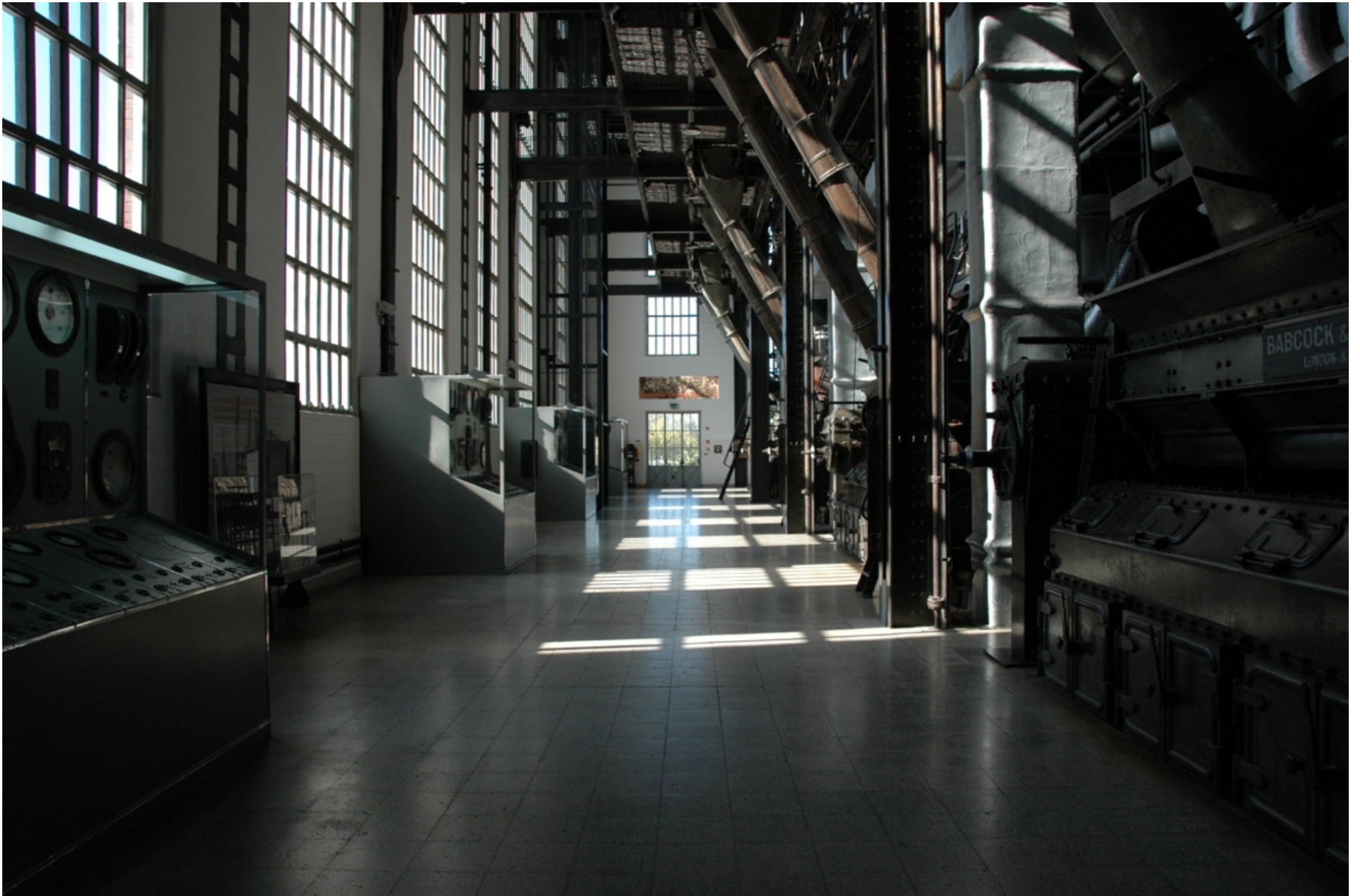
# FUTURE PERFECT



Close,

Closer

# FUTURE PERFECT



Close,

Closer

*“She spoke in terms of her service to others -- not just service to other people, but service toward whales, birds, algae, microbes, even to synthetic biological membranes and hylozoic reactive environments. She deferred to the non human inhabitants of the city.”*

## THE WILDS

*Artist*

*CohenVanBalen*

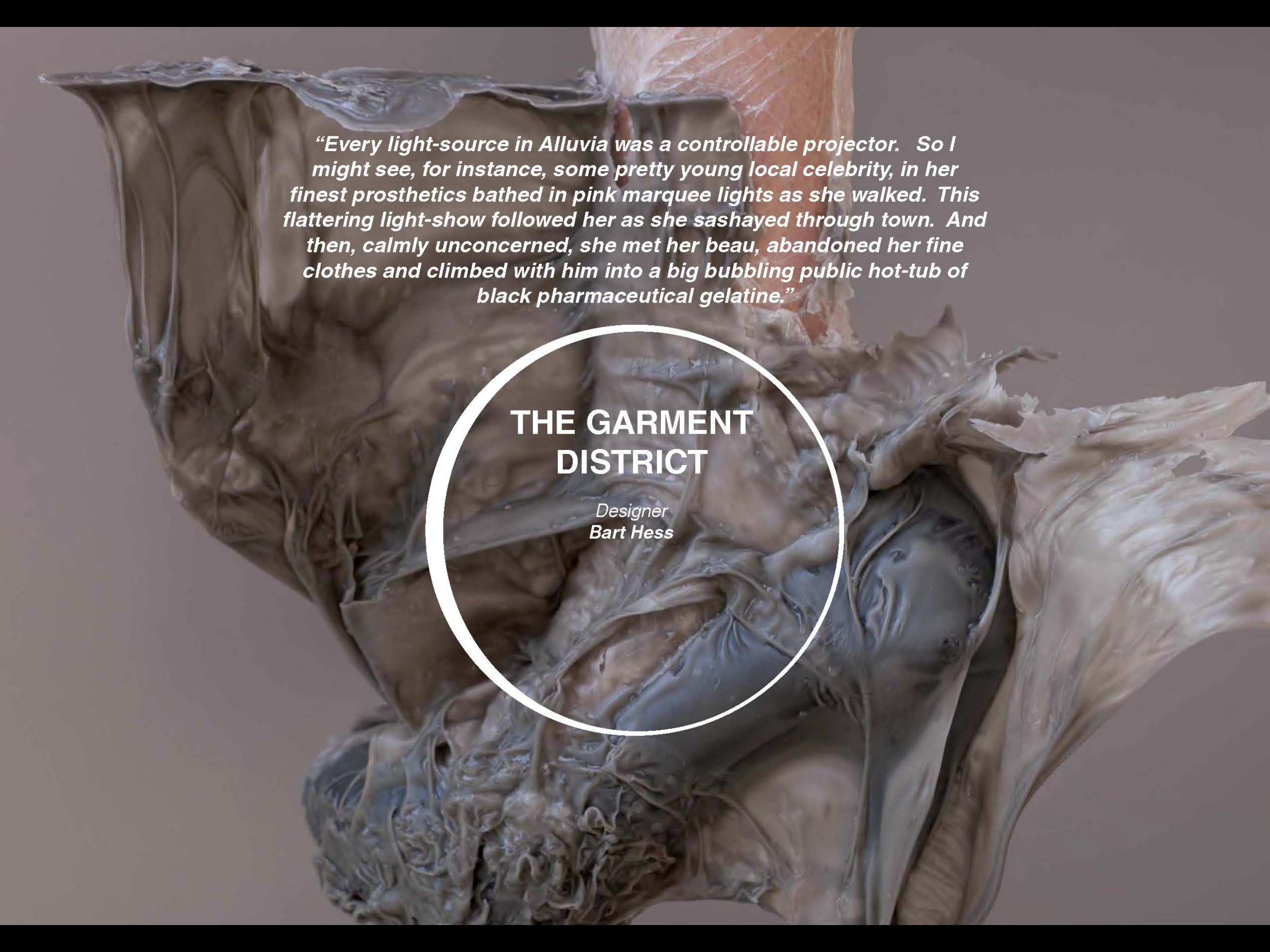
*Technology Partners*

*Michigan University*

*"They lived within an urban computer. They never talked into mobiles or typed on keyboards. Instead, they gestured. They behaved like silent film actors, stagey and posed, playing to the cameras. To interact with their cityscape, they waved their arms, wiped, swiped, pointed, prodded, nodded and stared at things...I found that by silently pointing, beckoning, and gesturing, I could fly all over Alluvia, free as a ghost...My eyes were goggled and my ears full of pink noise. I was a nothingness, even less than an avatar: yet the city was laid out before me in hallucinatory detail."*

## THE SUPERCOMPUTER

*Artist*  
**Marshmallow Laser Feast**  
*Choreographer*  
**Alex Whitely**  
*Technology Partners*



*“Every light-source in Alluvia was a controllable projector. So I might see, for instance, some pretty young local celebrity, in her finest prosthetics bathed in pink marquee lights as she walked. This flattering light-show followed her as she sashayed through town. And then, calmly unconcerned, she met her beau, abandoned her fine clothes and climbed with him into a big bubbling public hot-tub of black pharmaceutical gelatine.”*

## THE GARMENT DISTRICT

*Designer  
Bart Hess*



## THE LOOMS

*Designer*  
**Neri Oxman**  
*Technology Partners*  
**MIT Media Lab**

*"And the buildings grew, and decayed, and grew again from the soil of cities past. Computed nests, woven and abstracted, endlessly reprinting themselves as demand requires. All this industry is biotech, quiet, subtle, done at room temperature, a vast urban swallowing. The walls of the city swell with water, an intricate internally woven vascular system flows through it, draining through the street delta."*



# THE LOOKOUT

Director  
Factory Fifteen  
Script  
Warren Ellis  
Technology Partners  
Imaginarium

*"Emerging in the shadows of the decaying towers of a post oil Dubai, Future Perfect is imagined as a new terraformed urban island. It is a city that is grown rather than built, endlessly reprinting itself as demand requires.. Its material fabric has evolved as a complex endemic ecology where nature and technology intertwine and where biology becomes an economy."*



*"In the clouds are seeds of bacteria. There is a materiality to the weather.  
The boundaries of the body are disintegrating and you are becoming one  
with the city."*

## THE TERRAINS

*Overall Exhibition design*

*Art Director*  
**Vincenzo Natali**

# THE REAL AND OTHER FICTIONS

AN ARCHITECTURE EXHIBITION THROUGH PERFORMANCE

[Close,](#)

[Closer](#)

# THE REAL AND OTHER FICTIONS



Close,

Closer

Venue: Palácio Pombal, Carpe Diem Arte e Pesquisa.



Close,

Closer

Venue: Palácio Pombal, Carpe Diem Arte e Pesquisa.

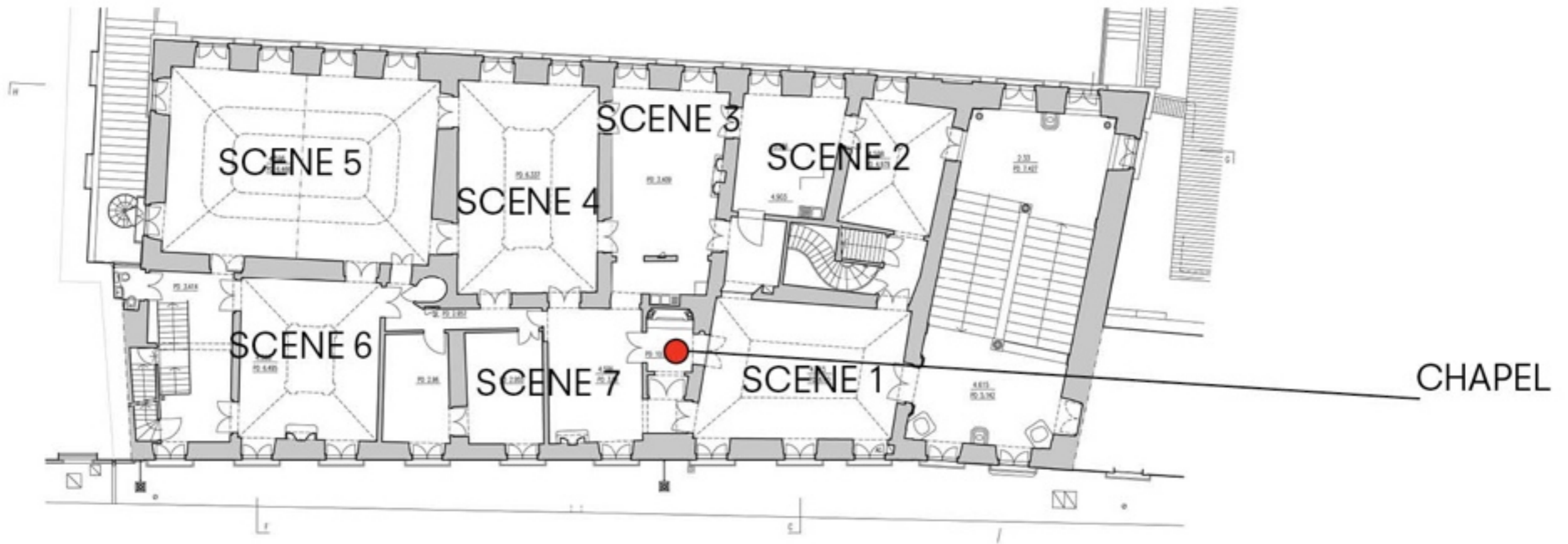


Close,



Closer

# AN EXHIBITION IN SEVEN SCENES



Close,

Closer

SCENE 1 : EMBASSY, BY KILUANJI KIA HENDA & PAULO MOREIRA



Close,

Closer

SCENE 2 : DOMESTIC PARLIAMENT, BY ZULOARK



Close,

Closer



SCENE 3 : CONTRARY OR OPPOSITION BY CARSTEN HOLLER



Close,

Closer

SCENE 4 : ACADEMY, BY FRIENDLY FIRE



Close,

Closer

SCENE 5 : DECADENCE FOR ALL, BY THE CENTRE FOR GENOMIC GASTRONOMY



Close,

Closer

SCENE 6 : IN THE TALLONS OF SERVITUDE, BY ONKAR KULAR AND NOAM TORAN



Close,

Closer

SCENE 7 : EXILE, BY ALEX SCHWEDER



Close,

Closer

# NEW PUBLICS

AN ARCHITECTURE EXHIBITION BY VOICE

Close,

Closer



Largo do Regedor

Igreja de São Domingos

Ginginha Estrela Rubi

Teatro Nacional Dona Maria II

A Ginjinha

Santa Justa

Hotel Mundial

Hotel Mundial

McDonald's

Café Gelo

Hotel Portugal

Pensão Praça Da Figueira

Leitaria São Domingos

Pensão Residencial Beira Minho

Manteigaria Silva Lda

Pensão Ibérica

Grande Pensão Alcobia

Praça Dom Pedro IV

Rossio

M

Pastelaria Sulça

Circuito Olisipo

Praça da Figueira

Restaurante Caxemira

ROSSIO HOSTEL

Pensão Estação Central

Hotel Metropole

Café Nicola

Downtown Guesthouse

Lisbon View Hostel

Pensão Santo Tirso

Internacional

Baixa de Lisboa

Confeitaria Nacional

Restaurante Gandhi Palace

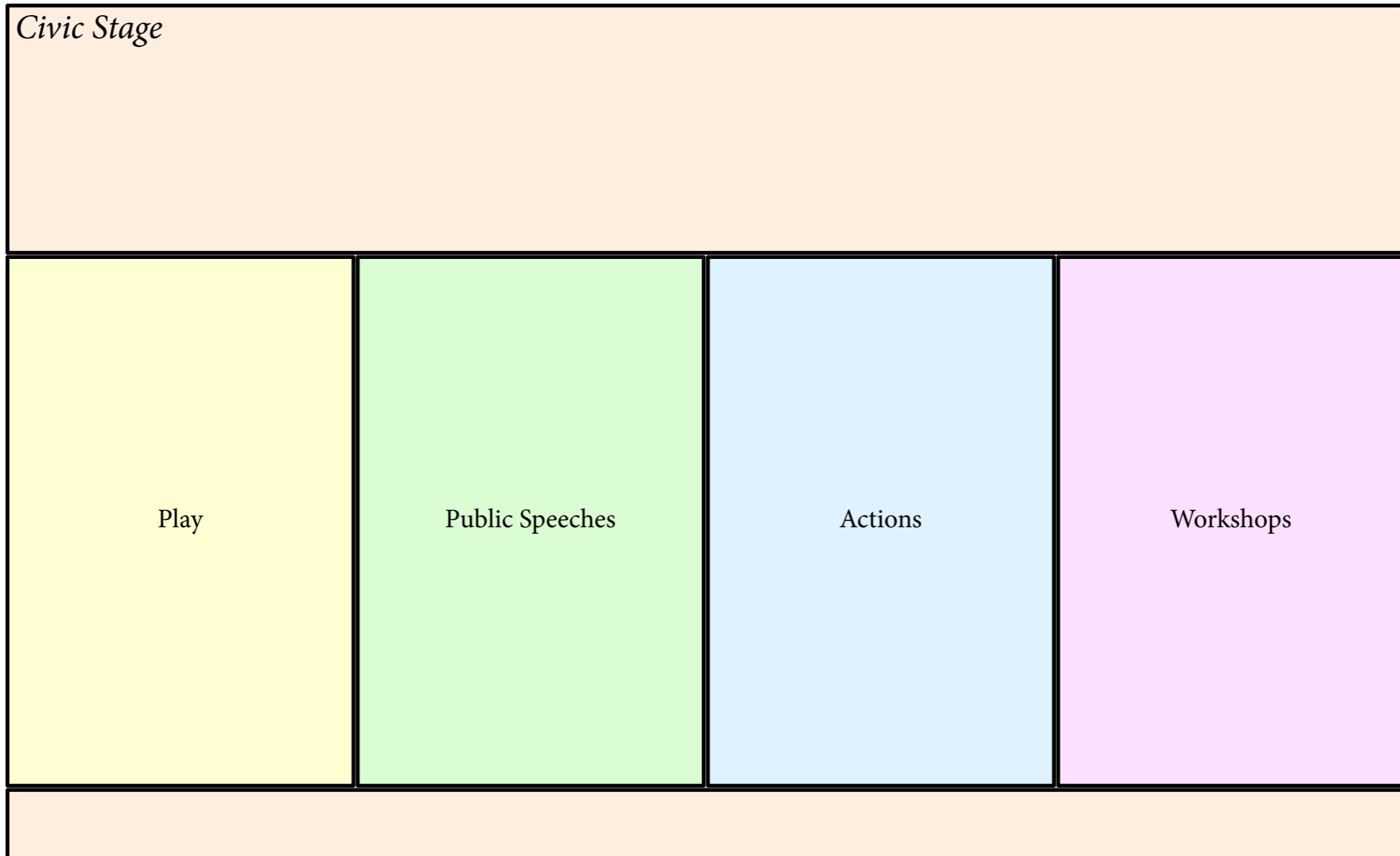
Pensão Residencial Norte

282

P. do

# *NEW PUBLICS*

## *NOVOS PÚBLICOS*

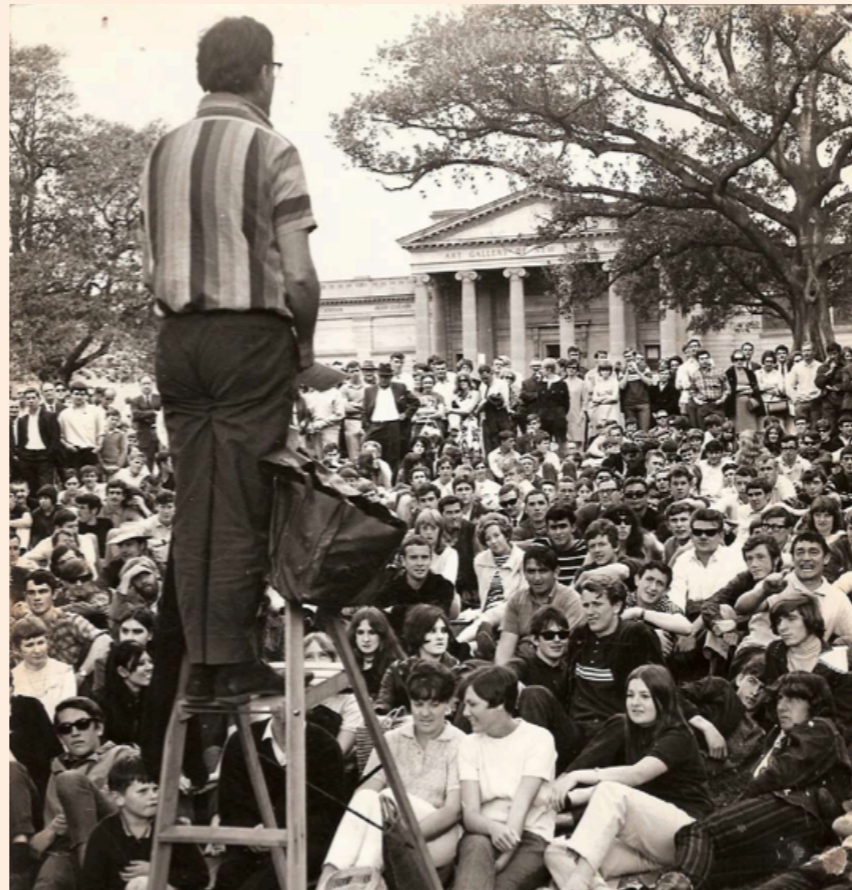




# THE CIVIC STAGE

## Frida Escobedo (México)

The centrepiece of the New Publics programme—where the majority of its events will take place—will conceptually and physically take the form of a theatrical public stage: a civic stage. Here, spontaneous and orchestrated discussions about new working strategies that have emerged as a consequence of the contemporary sociopolitical context will occur. It provides a stage where new publics and new audiences come together and become familiar with the changing landscape of spatial practice. It is a civic stage that is meant to “enable novelty, invention, and the creation of entirely new kinds of things to come into existence”—including publics.







Buildings © 2008 3D Cities SA

Google earth

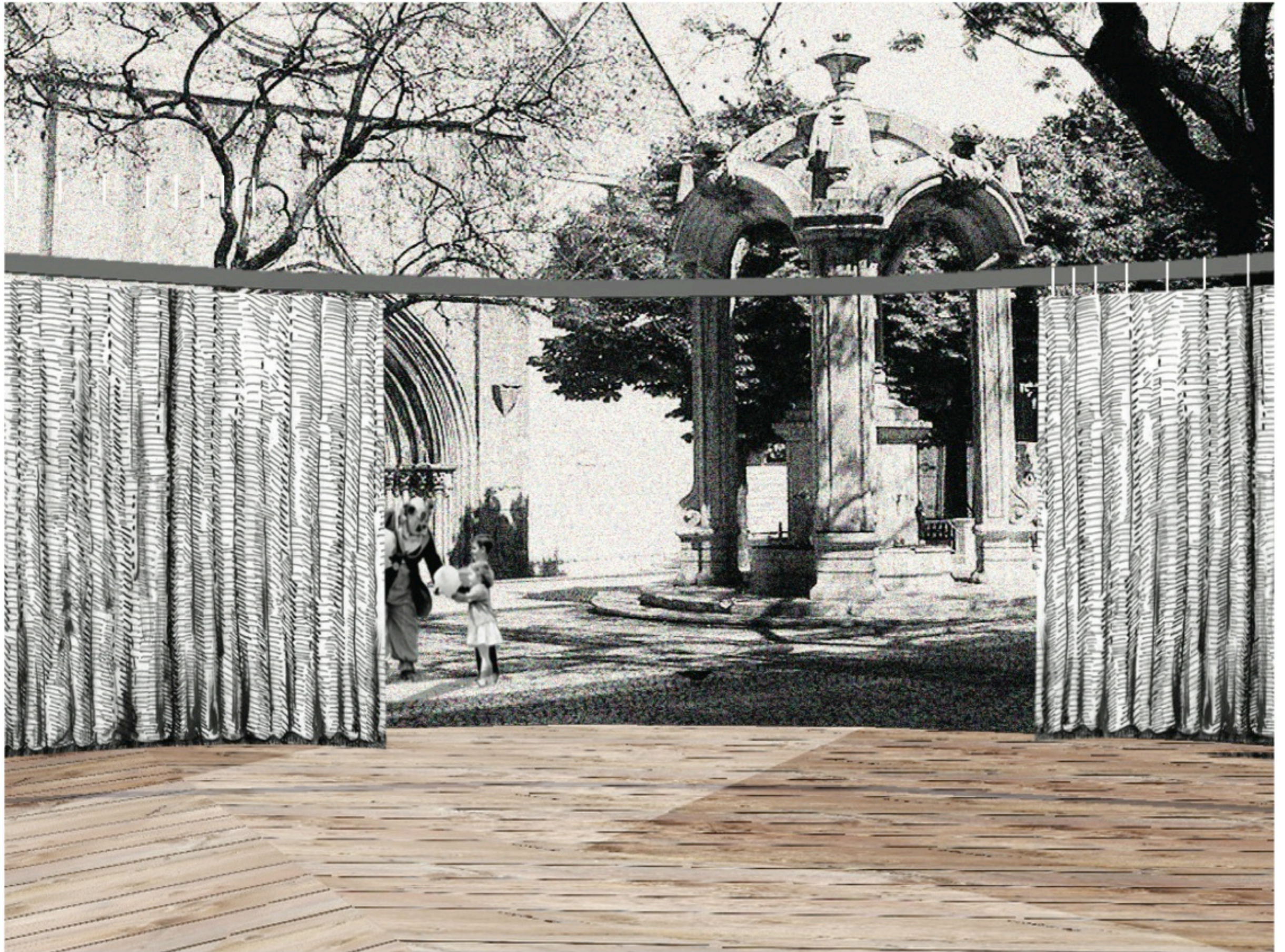
13 m

Fecha de las imágenes: 6/22/2007 2002

38°42'49.44" N 9°08'16.61" O elev. 10 m

Alt. ojo 73 m





# PLAY

Andrés Jaque Architects  
Office for Political Innovation (Spain)



# WORKSHOPS

Arteria (Portugal)

Daniel Fernández Pascual (Spain)

Esterni (Italy)

The New Publics Workshops, are not workshops per se, but models or strategies that not only attempt to put forward a more comprehensive understanding of architecture, but that significantly contribute at a local scale to the social dynamics of a particular area in the city of Lisbon.



# ACTIONS

Francisca Benítez (Chile)  
Estudio SIC (Spain)





# PUBLIC SPEECHES

Massimo Cacciari (Italy)

David Harvey (UK)

Pelin Tan (Turkey)

Observatorio Metropolitano (Spain)

Michael Hardt (US)

Damon Rich (US)

Atelier Mob (Portugal)

Emiliano Gandolfi (Italy)

Noura al Sayeh (Bahrain)

Unipop (Portugal)

Pulska Grupa (Croatia)

# ASSOCIATED PROJECTS

Radical Pedagogy, Princeton SOA (US)  
Architecture & Performance (Spain)



# CRISIS BUSTER GRANTS

AN ARCHITECTURE COMPETITION FOR LISBON

Close,

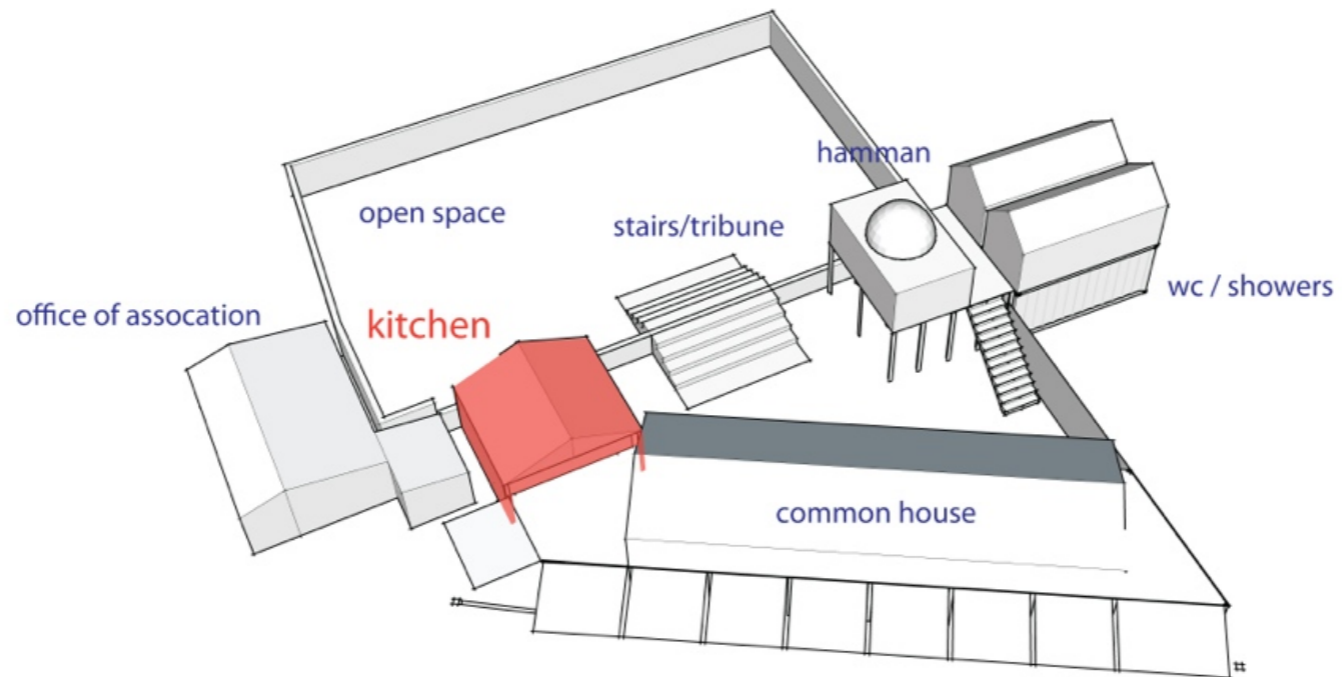
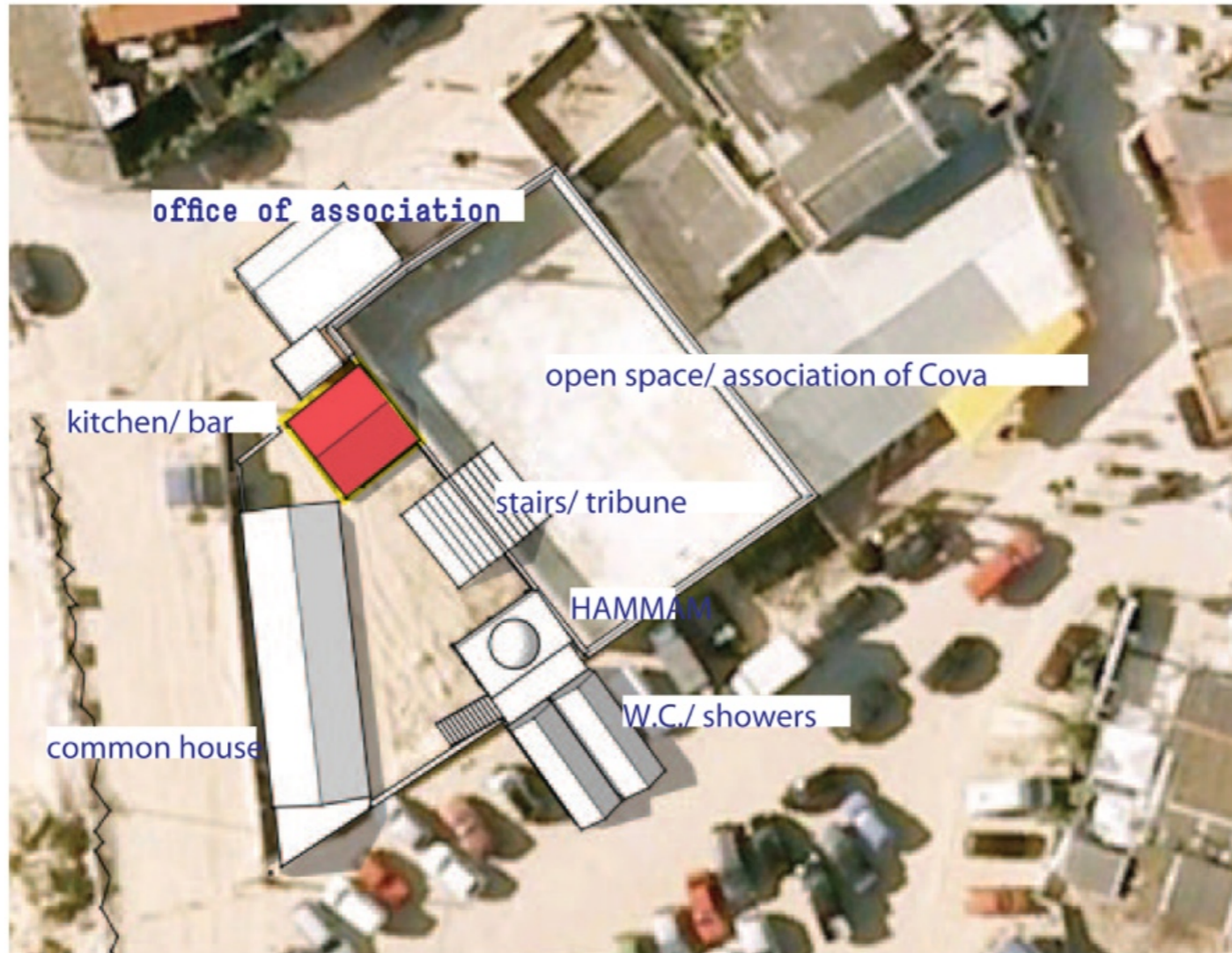
Closer

# CRISIS BUSTER



Close,

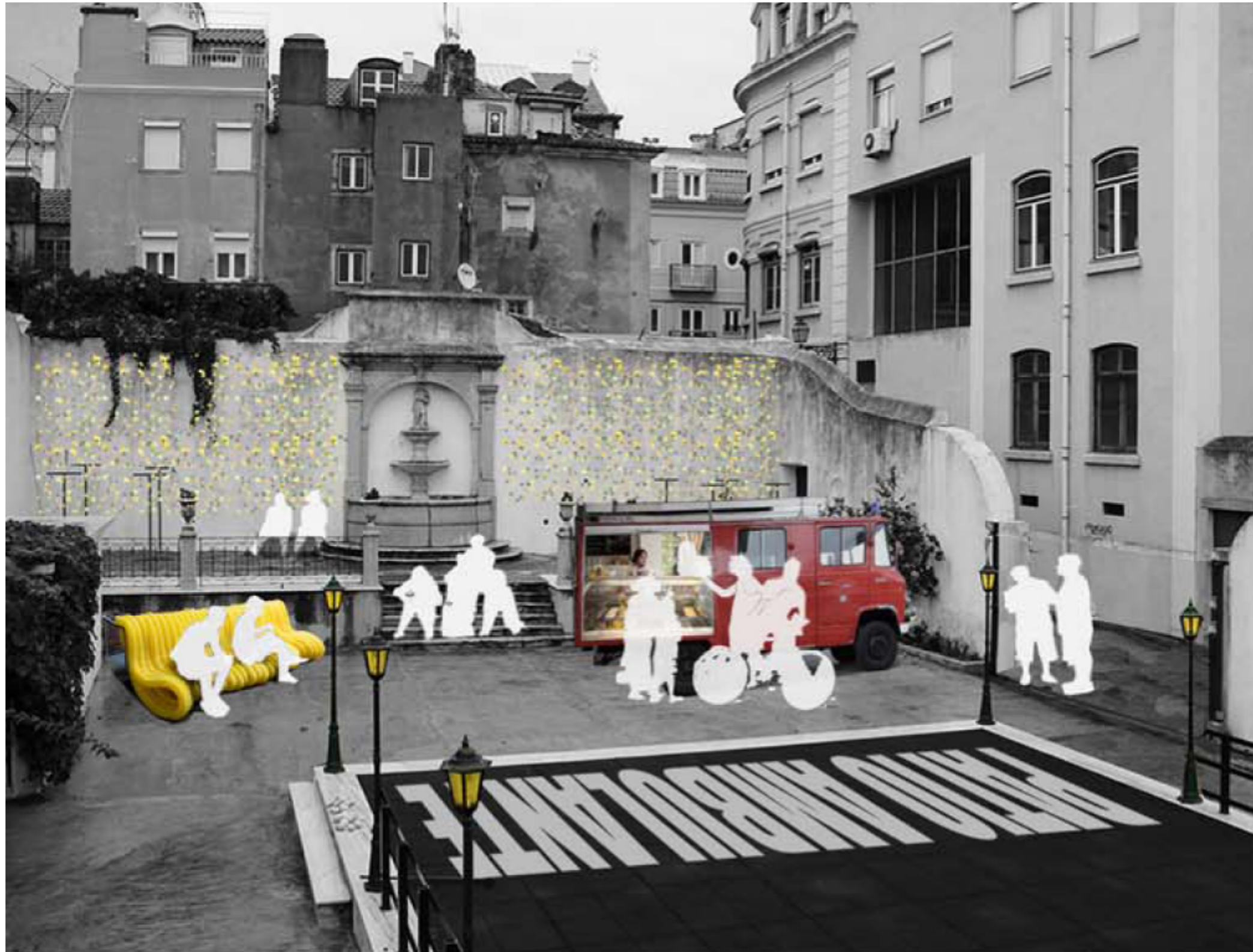
Closer



Close,

Closer

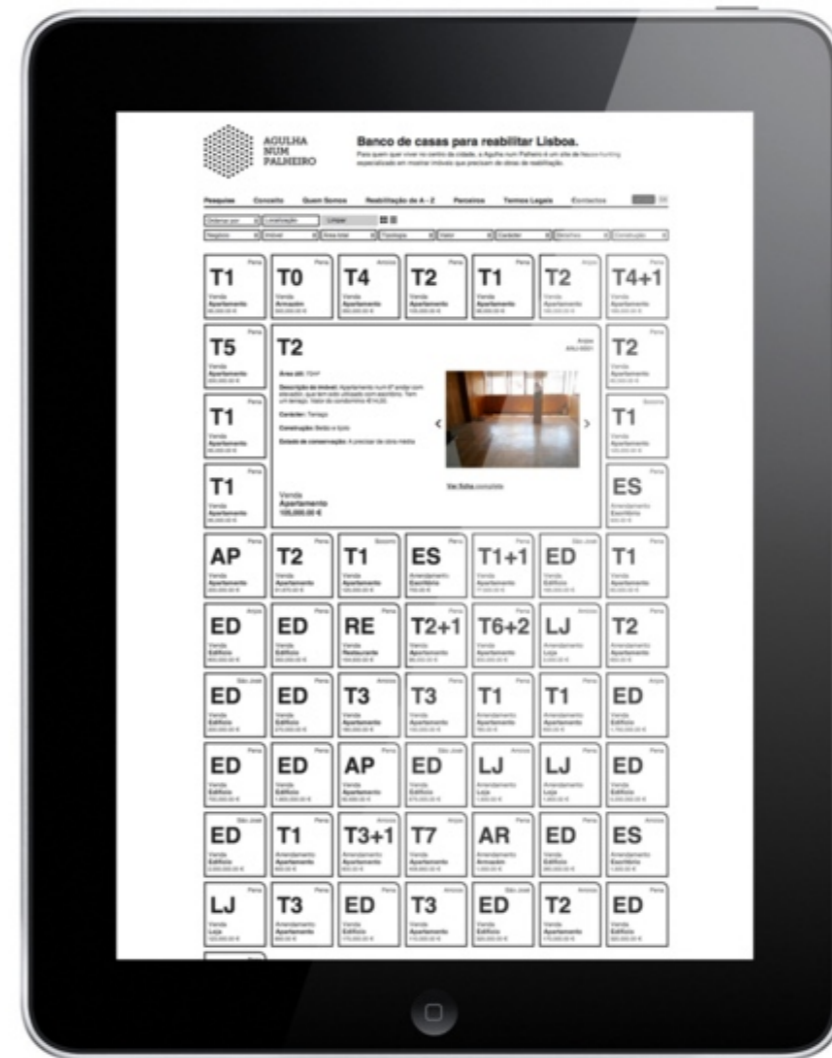
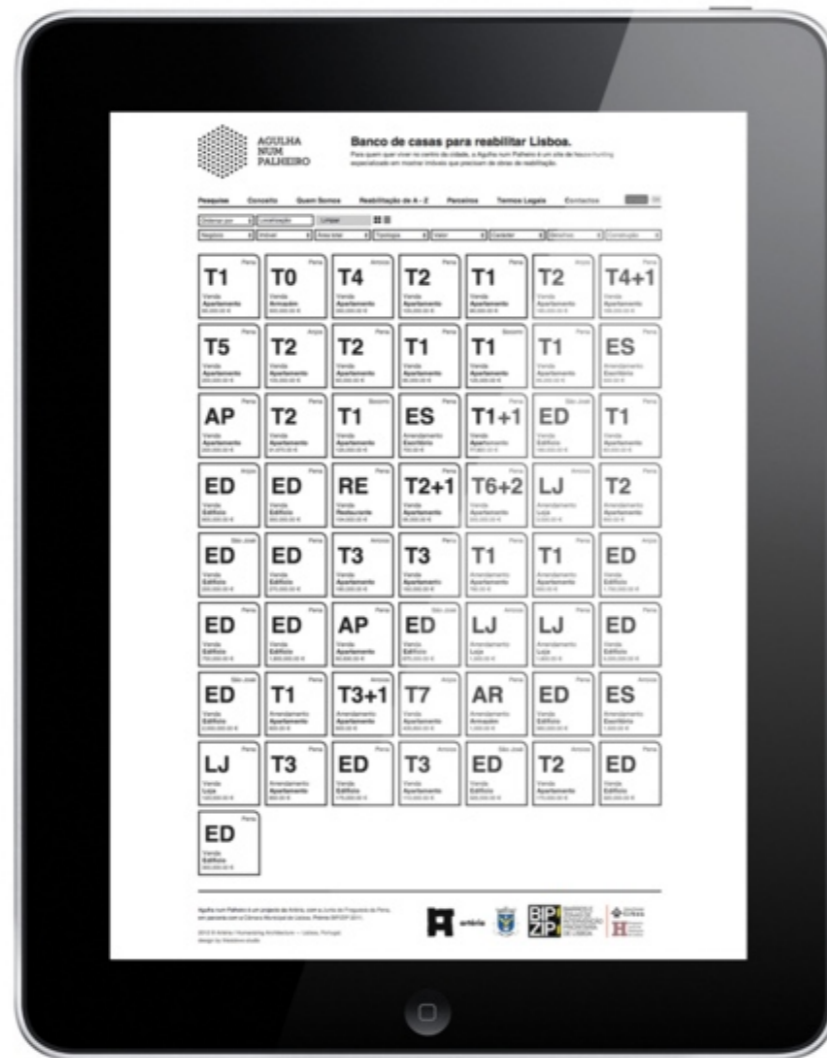
# CRISIS BUSTER



Close,

Closer

# CRISIS BUSTER



# E-BOOKS SERIES

Close,

Closer



EBOOKS

Close, N°1 Closer	Close, N°2 Closer	Close, N°3 Closer
Close, N°4 Closer	Close, N°5 Closer	Close, N°6 Closer

Close,

Closer

# CROWD-SOURCED IDENTITY

Close,

Closer

# IDENTITY

Webpage Screenshot

Close,

Closer

PT [EN](#)

## WHAT IS SUSTAINABLE ARCHITECTURE?



[About](#) [Programme](#) [Open Calls](#) [Press](#) [Contact](#) [Support](#)

Notify me on launch of full website

AN  
EVOLVING  
DYNAMIC  
INTERFACE  
WITH THE  
NATURAL  
SYSTEMS

ÉPHÉMÈRE

IT IS  
INFORMED BY  
THE PAST,  
VISIONARY  
AND A  
COLLECTIVE  
EXERCISE

NO  
MORE  
BUILDING

WHAT  
IS  
SUSTAI  
NABLE  
LIVING?

LOCAL

É A QUE  
RESPEITA O  
PASSADO,  
SERVE O  
PRESENTE E  
NÃO  
COMPROMETE  
O  
FUTURO.

É A QUE  
SE  
CONSEGUE  
PAGAR E  
DEPOIS  
MANTER.

É  
A  
QUE  
UTILIZA  
RACIONALMENTE  
OS  
RECURSOS  
DISPONÍVEIS.

THE  
GREAT  
ONE

AFRICA

ARCHITECTS  
OVERTIME

MY MOTHER,  
EVEN THOUGH  
SHE IS AN  
ARCHITECT  
HERSELF.  
NOW  
HEROINE OF  
THE  
STREET!

CLAY,

ARCHITECTURE  
PAYS  
FOR  
WHOM?

OS  
PAIS

MY  
EYES  
PAY  
ATTENTION  
FOR  
BEAUTIFUL  
THINGS  
LIKE  
ARCHITECTURE...

OPEN  
UP

RESTORE THE  
BROKEN  
LINKS  
BETWEEN  
HUMANS AND  
OTHER  
SPECIES AT  
ARRIVE A  
BETTER  
PLACE.

¥ €  
\$

EVERY  
ME AND  
EVERY  
YOU

NOT  
THE  
INTERNATIONAL  
SITUATIONISTS

THE  
GARDEN  
OF  
FORKING  
PATHS

THE  
PEOPLE  
WHO  
DON'T  
UNDERSTAND  
THE  
DEFINITION  
OF  
"ARCHITECTURE"

EU PAGO,  
TU PAGAS,  
ELE(A)  
PAGA, NÓS  
PAGAMOS,  
VOS PAGAIS,  
ELES(AS)  
PAGAM

IF IT  
GOES  
WELL: OUR  
PARENTS.  
IF NOT:  
OUR  
KIDS

ARCHITECTS  
WHO ARE  
NOT  
INTERESTED  
IN THE  
STAR  
SYSTEM

THE

INFELIZMENTE,

(BEING)  
HUMAN

NOT

IN THE END,

ARCHITECTURE

THIRD EDITION LISBON ARCHITECTURE TRIENNALE: 12 SEP – 15 DEC 2013



<http://www.close-closer.com/en/#>

Close,

Closer

# IDENTITY

WITHOUT  
SUPERIORS  
AND  
SUBORDINATES  
=  
ANARCHISM

Close,

Closer

TRIAED  
CO-OPS  
TO  
FUND  
NEW  
DEVELOPMENT

## HOW CAN ARCHITECTURE GET CLOSER TO THE FORCES SHAPING THE CITY?



About Programme Open Calls Press Contact Support

OK

BY  
LISTENING.

THEIR  
KNOWLEDGE  
TO INCLUDE  
ALL FIELDS  
THAT RELATE  
TO THE CITY'S  
SHAPING

THE  
INSPIRATION  
FOR EVERYONE,  
CAUSE  
EVERYONE  
CONTRIBUTES  
TO CITY'S  
SHAPING

LONG,  
OPPORTUNITY  
FLEETING,  
EXPERIENCE  
DECEPTIVE,  
JUDGEMENT  
DIFFICULT.

BY  
ACTION  
OR  
SEDUCTION

IMMEDIATELY,  
CRITICALLY  
AND  
DIRECTLY ON  
THE URBAN  
ENVIRONMENT

BY  
LISTENING  
BEFORE  
TALKING

SER  
MARGINAL

PARTICIPAR  
TRANS  
FORMAR  
AGIR

RESISTIR

PENSAMENTO  
DE  
LINHAS

GET  
POLITICAL  
AGAIN

OLHA DE  
BAIXO  
PARA  
CIMA, E  
NÃO DE  
CIMA PARA  
BAIXO!

PELA  
COSMOFIÇÃO,  
CONSTRUIR  
MUNDOS

WITH  
LOVE

RECONSTRUINDO  
COM  
UM  
TOQUE  
MODERNO,  
AS  
INFRASTRUTURAS  
DEGRADADAS.

CLOSE,

BE  
MORE  
FUNNY.

IT CAN  
KILL

PENSAMENTOS  
NÃO  
MUROS

PARA  
SATISFAZER  
AS  
NECESSIDADES  
FÍSICAS/ESPIRITUAIS  
DA  
COMUNIDADE,  
E  
NOSSA  
IDENTIDADE  
ARQUITECTÓNICA

PROJETAMOS  
PARA  
AS  
PESSOAS,  
COM  
AS  
PESSOAS.  
PROJETAMOS  
PARA  
INSTIGAR  
COMPORTAMENTOS.

PROBLEMS

PARA QUEM  
TEM DINHEIRO  
PORQUE/QUANDO  
O ARQUITECTO  
É NECESSÁRIO  
PARA A  
CONCRETIZAÇÃO  
DE UM  
NEGÓCIO

TO GET  
CLOSER TO  
EACH OTHER,  
TO BIND THE  
OTHER WITH  
THE OTHERS,  
TO NOT  
FORGET  
ABOUT  
SPACE.

PARA O  
HOMEM, NUMA  
TENTATIVA DE  
CRIAR ORDEM  
TANGÍVEL,  
NUM MUNDO  
DE CADA VEZ  
MAIS  
COMPLEXAS  
RELAÇÕES

FOR  
SHAPING  
THE  
FUTURE  
IN  
RESPONSIBLE  
WAYS.

PROJECTAMOS  
PARA OS  
SENTIDOS, PARA  
DESPERTARMOS  
SENSAÇÕES,

I DESIGN  
A BETTER  
WORLD

PARA  
MIM, DE  
OUTRA  
FORMA

TO GET  
CLOSER WE  
SHOULD PULL  
FARTHER  
AWAY CAN

PARA  
QUEM  
QUER  
ESTAR  
PRESENTE,

PARA  
TODOS,  
TAMBEM

FOR

PARA  
AS  
PESSOAS.  
SÃO

'THE WORLD  
AS DESIGN'

THIRD EDITION LISBON ARCHITECTURE TRIENNALE: 12 SEP – 15 DEC 2013



Close,

Closer

**TACTICS  
NOT  
SYSTEMS**

Close,

Closer

**THE OLD,  
THE OSSIFIED,  
MUST ALWAYS  
GIVE WAY TO  
NEW LIFE AND  
THE BIRTH OF  
NEW THINGS**

Close,

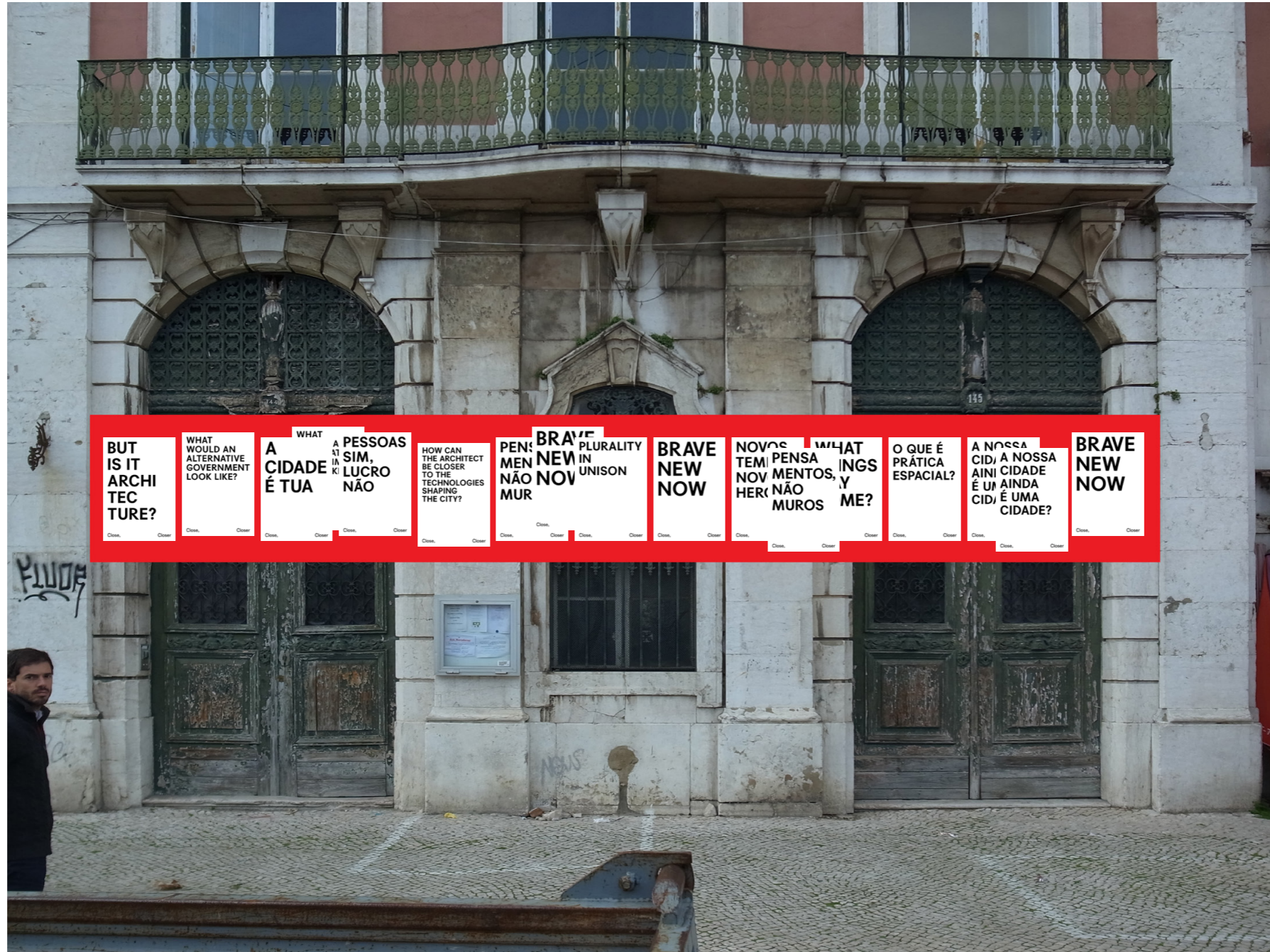
Closer

**DIY**

Close,

Closer

# IDENTITY



BUT  
IS IT  
ARCHI  
TEC  
TURE?

WHAT  
WOULD AN  
ALTERNATIVE  
GOVERNMENT  
LOOK LIKE?

WHAT  
A PESSOAS  
CIDADE É TUA  
SIM,  
LUCRO  
NÃO

HOW CAN  
THE ARCHITECT  
BE CLOSER  
TO THE  
TECHNOLOGIES  
SHAPING  
THE CITY?

PEN: BRAVE  
MEN NEW  
NÃO NOV  
MUR UNISON

BRAVE  
NEW  
NOW

NOVOS  
TEM PENSE  
NOV MENTOS,  
HERI NÃO  
MUROS

WHAT  
INGS  
Y  
ME?

O QUE É  
PRÁTICA  
ESPACIAL?

A NOSSA  
CID, A NOSSA  
AINI CIDADE  
É U  
CID, É UMA  
CIDADE?

BRAVE  
NEW  
NOW

Close,

Closer

**12 SEPT - 15 DEC 2013**

Close,

Closer