

Om Patri
Ketan Antil
Pedro Szekely



Photo Odyssey

Create Personalized Photography Itineraries in Realtime

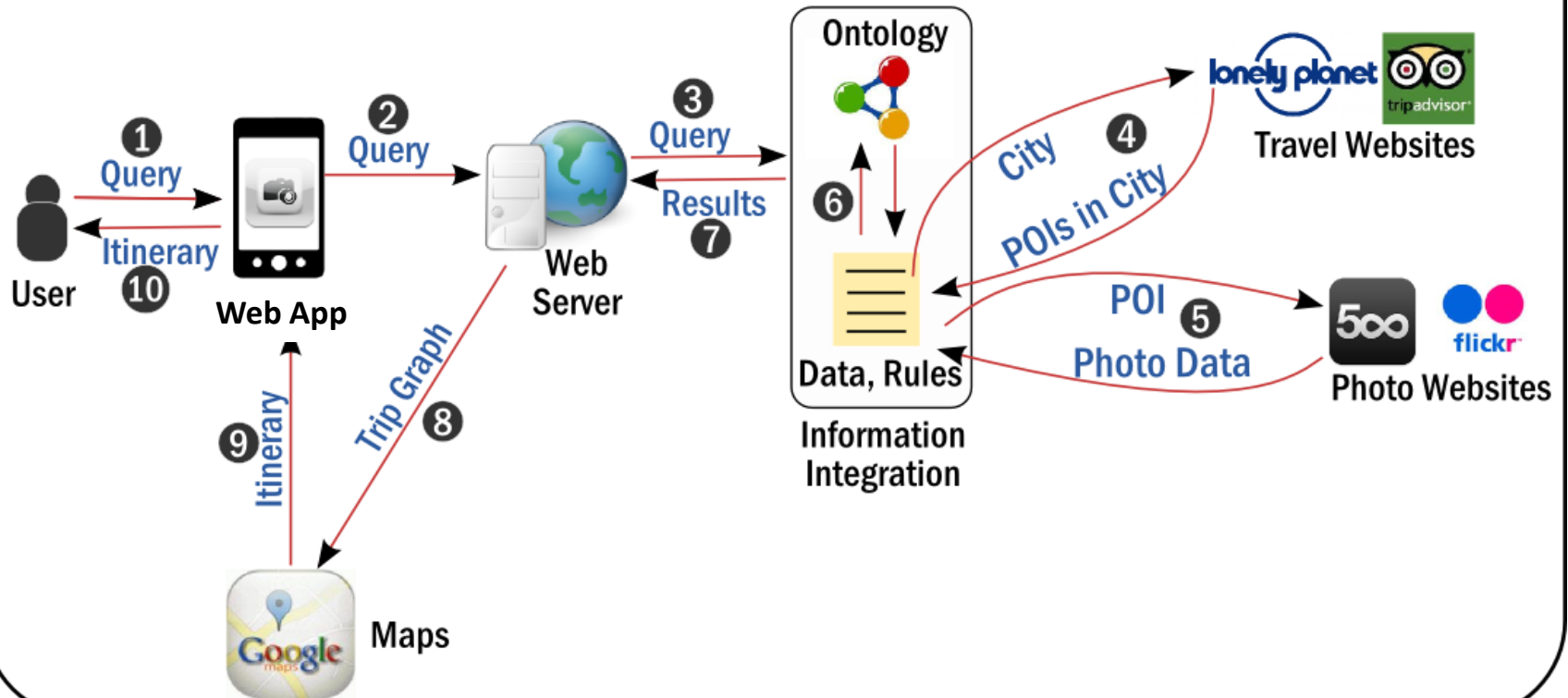
Motivation

- Target users : Photography enthusiasts and tourists
- What is missing in state-of-the-art ?
 - Automatic trip planning for photography needs
 - Personalization options in itinerary
 - Search via Photography technical information and metadata
 - Semantic application for **realtime** integration from **photo streams**

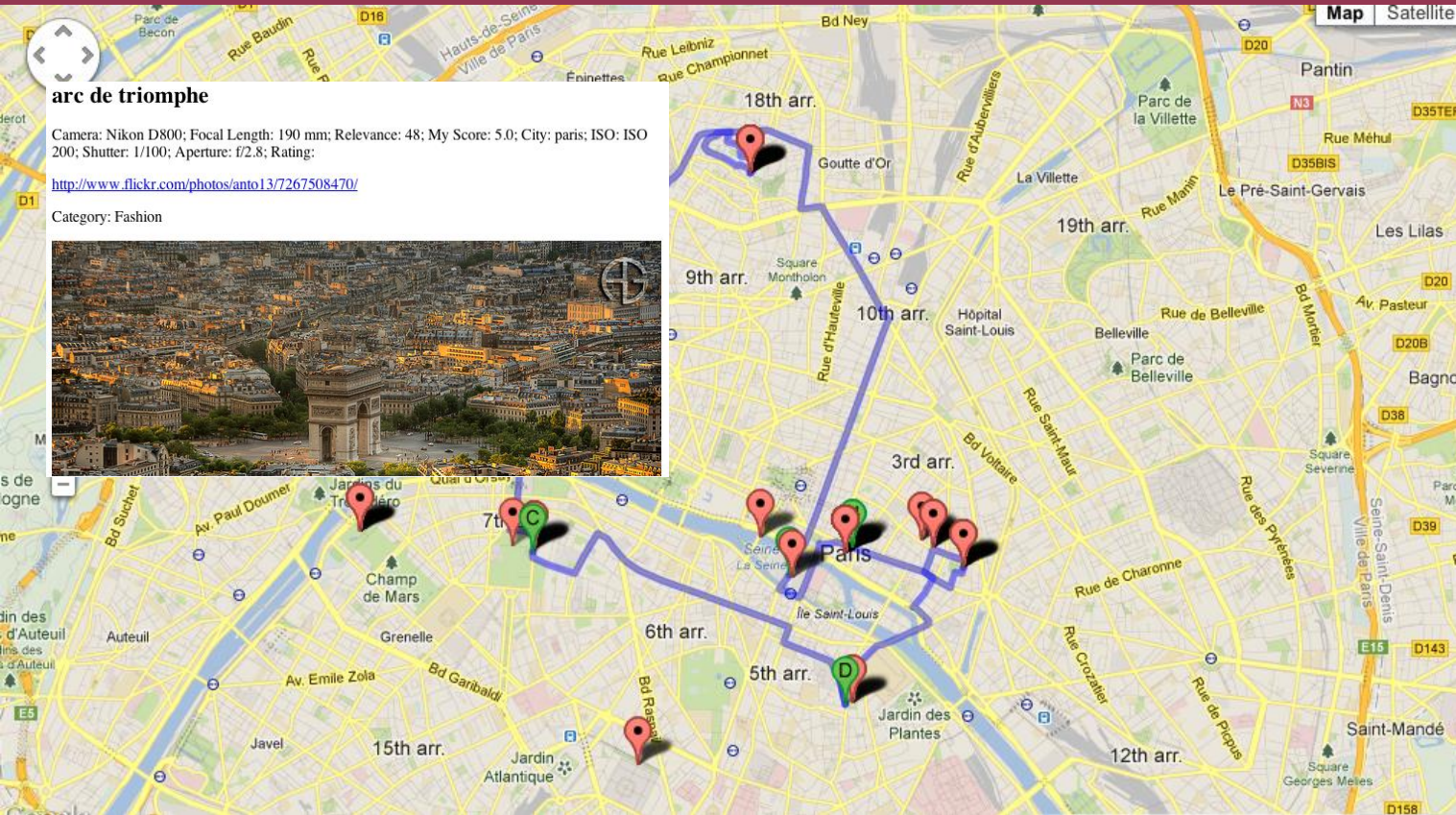
Architecture



Photo Odyssey Architecture



User Interface



arc de triomphe

Camera: Nikon D800; Focal Length: 190 mm; Relevance: 48; My Score: 5.0; City: paris; ISO: ISO 200; Shutter: 1/100; Aperture: f/2.8; Rating:

<http://www.flickr.com/photos/anto13/7267508470/>

Category: Fashion



- Route Segment: 1**
4 Place du Tertre, 75018 Paris, France to 4 Place du Tertre, 75018 Paris, France
1 m
- Route Segment: 2**
4 Place du Tertre, 75018 Paris, France to 13 Boulevard des Invalides, 75007 Paris, France
5.7 km
- Route Segment: 3**
13 Boulevard des Invalides, 75007 Paris, France to Les Arènes de Lutèce, Rue Monge, 75005 Paris, France
3.7 km
- Route Segment: 4**
Les Arènes de Lutèce, Rue Monge, 75005 Paris, France to 10 Place des Vosges, 75004 Paris, France
2.4 km
- Route Segment: 5**
10 Place des Vosges, 75004 Paris, France to 29 Rue de Rivoli, 75004 Paris, France
1.2 km

Choose Category:

- Black and White
- City & Architecture
- Uncategorized
- Still Life
- Nature
- Nude
- Fine Art
- People
- Trans
- Travel
- Film
- Animals
- Underwater
- Fashion
- Urban Exploration
- Commercial
- Macro
- Food

Choose Aperture Range:

1 22

Choose ISO Range:

1 3201

Choose Photo Relevance:

38 97

Challenges

- Find whether point of interest (POI) crawled is valid
- ✓ Use Google Maps geocoding/decoding API to search for lat/long of POI and compare obtained city with user argument city

- Multiple users need to access system simultaneously
- ✓ Use Tornado, a non-blocking scalable Python-based web server

- Find highly rated photographs
- ✓ Solution : Use #views, #favorites and 500px pulse ratings

- Bad Data, Incompatible JSON encoding

Challenges (Fuzzy String Matching)

- ❑ Find relevant photos
 - ✓ Jaro-Winkler Distance (photo title + tags AND poi + city name)

- ❑ Eliminate duplicate/similar POI names
 - ✓ Token Set Ratio ($POI_{\text{TripAdvisor}}$ AND $POI_{\text{LonelyPlanet}}$)
 - Closely related to Jaccard distance
 - “Brandenburg Gate” = “Brandenburg Gate (Brandenburger Tor)”
 - “Olympic Stadium” = “Olympic Stadium (Olympiastadion)”

- ❑ Assign “category” to Flickr image
 - ✓ Hybrid weighted matching between POI+City and Title+Tags
 - ✓ Best score from
 - Levenshtein
 - Partial Ratio (~Smith-Waterman)
 - Token Sort (~Sorted string tokens)
 - Token Set (~Jaccard)
 - ✓ If confidence is low then label as “Uncategorized”

Itinerary Customization

- Category of Photographs
- Camera Model
- Aperture/ISO/Shutter Speed Range
- Photo Relevance, Rating, Score

Choose Category:

Black and White City & Architecture Uncategorized Still Life Nature Nude Fine Art People Transportation Sport Performing Arts Family Travel Film Animals Underwater Fashion Urban Exploration Commercial Macro Food

Choose Camera:

Canon EOS 40D X350,D575Z,C360Z Samsung WB500, WB510 / VLUU WB500 / Samsung HZ10W Canon EOS 5D Mark II Sony DSC-W120 Canon EOS 7D Nikon D90 OLYMPUS E-400 Sony DSLR-A850 Nikon D60 Nikon D300 Sony SLT-A99V Kodak EasyShare C763 Zoom Olympus SP500UZ Pentax K-7 Canon EOS 550D Sony DSLR-A550 HP pstc4400 Canon EOS Digital Rebel XS Canon EOS 5D Canon EOS 600D NIKON D600 SONY DSC-N1 Canon EOS REBEL T1i Sony DSLR-A700 Canon EOS 400D Digital Nikon D40 Canon EOS 300D Digital Sony DSLR-A500 Nikon D700 Nikon D7000 Nikon D800 Canon EOS 450D Olympus VR360,D760 Fujifilm FinePix S304 Nikon D80 Pentax K200D Nikon D3 Nikon E4600 Olympus E-3 Canon EOS 50D Nikon D5000 Canon PowerShot S95

Choose Photo Rating:



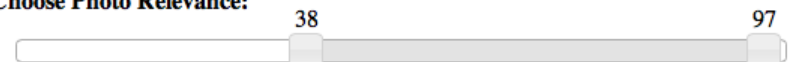
Choose Aperture Range:



Choose ISO Range:



Choose Photo Relevance:



Conclusions

- Photo Odyssey is an application for:
 - ✓ Automatically integrating photograph data from multiple source websites on-the-fly
 - ✓ Viewing relevant as well as highly rated photographs for points of interest in a city
 - ✓ Building customized itineraries according to photographic preferences
 - ✓ Spending lesser time searching for good photographs
 - ✓ Helping amateur photographers take better shots

- ❖ Live demo : <http://kalu.usc.edu:9999>