



ESLAV Awareness Presentation

Dasa Seveljevic-Jaran, DVM, MSc LAS

Ordinary board member, Nat Reps coordinator

“Adequate veterinary care is essential to the health and well being of animals used for research and other scientific purposes”.

ETS 123 and 2010/63/EU Directive,
previously 86/609/EEC



EUROPEAN SOCIETY OF LABORATORY ANIMAL VETERINARIANS

Directive 86/609

In the late 1970's the Council of Europe started preparing a convention on the use of animals in experiments, setting out a basic scheme of regulation.

This was eventually adopted in 1986 as the European Convention for the protection of vertebrate animals used for experimental and other scientific purposes (ETS 123),
Directive 86/609



HISTORY

- ✦ The cornerstones for the creation of the **European Society of Laboratory Animal Veterinarians (ESLAV)** were laid by Dr. Whittaker in 1996 during the 6th FELASA Symposium in Basel, Switzerland. Over 100 veterinarians from different European countries and the US were present at that initial meeting.
- ✦ In 1997, the Constitution was written and ESLAV was registered as a **non-profit organization** in Amboise, France by Drs. Baneux and Degryse.
- ✦ The 1st Annual General Meeting (AGM) of ESLAV was held in 1999 during the ICLAS* – FELASA** Joint Meeting in Palma de Mallorca, Spain.

*International Council for Laboratory Animal Science

**Federation of European Laboratory Animal Science Associations

HISTORY

- ★ A 1st Scientific Meeting was held in conjunction with the Laboratory Animal Veterinary Association (LAVA) in 2000 in Dublin, Ireland. During that meeting the 2nd AGM was held and the need of creation of Bylaws was discussed.



EUROPEAN SOCIETY OF LABORATORY ANIMAL VETERINARIANS

OBJECTIVES

Promoting and disseminating veterinary knowledge within the field of Laboratory Animal Science

- ✳ **Increasing veterinary knowledge on Laboratory Animal Medicine (LAM) and Science (LAS)**
- ✳ **Ensuring professional representation at the level of European decision making bodies**
- ✳ **Supporting the European College of Laboratory Animal Medicine (ECLAM)**



OBJECTIVES (cont.)

- ✦ Collaboration and exchange with other organisations (FELASA, ICLAS (International Council for LAS), LAVA, AAALAC-I (Association for Assessment and Accreditation of Laboratory Animal Care – International), ACLAM (the American College of Laboratory Animal Medicine), ASLAP (the American Society of Laboratory Animal Practitioners), AALAS (American Association for Laboratory Animal Science) ...
- ✦ Continuing training and education both at the graduate and postgraduate level



MISSIONS

- ✦ The advancement of veterinary knowledge and skills
- ✦ A forum to discuss issues which concern us, in the field of laboratory animal science, in general and in Europe specifically
- ✦ Active encouragement of its Members to provide training for veterinarians practicing or wishing to practice in the field of laboratory animals, both at the under- and postgraduate level

Achieved through:

- ✦ Meetings, lectures, discussions and publications
- ✦ Annual scientific meetings organized in conjunction with European associations around Europe
- ✦ 'Briefing', the official joint publication of ESLAV and LAVA (Laboratory Animal Veterinarians Association, UK)



EUROPEAN SOCIETY OF LABORATORY ANIMAL VETERINARIANS

Collaboration and exchange of information with other organisations

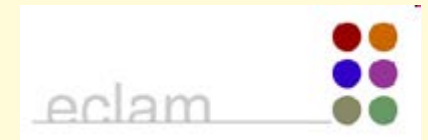
- * **FELASA (Federation of Laboratory Animal Science Associations)**



- * **EFPIA (European Federation of Pharmaceutical Industries and Associations)**



- * **ECLAM (European College of Laboratory Animal Medicine)**

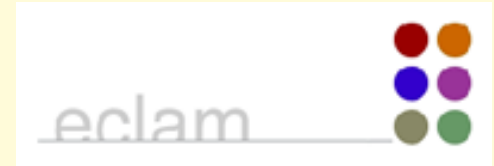


- * **LAVA (Laboratory Animals Veterinarians Association)**





ESLAV & ECLAM



- * **ECLAM is the veterinary college within Europe for the speciality of Laboratory Animal Medicine, and like other veterinary speciality colleges is overseen by the European Board of Veterinary Specialisation (EBVS).**
- * **ECLAM was an initiative of the European Society of Laboratory Animal Veterinarians**
- * **The primary objectives of the ECLAM are to advance laboratory animal medicine in Europe and increase the competence of those who work in this field by:**
 - **establishing guidelines for post-graduate education and experience, prerequisite to becoming a specialist in laboratory animal medicine**
 - **examining and qualifying veterinarians as specialists in laboratory animal medicine**
 - **encouraging research , expanding knowledge relating to the pathogenesis, diagnosis, therapy, prevention and control of laboratory animal diseases, and**
 - **promoting the communication and dissemination of this knowledge**



About ESLAV (continued)

- ✦ Representation of the veterinary "voice" at regulatory and governmental bodies
- ✦ Beyond the internal forum, **ESLAV** is the only European entity **representing the veterinary profession** specifically in the laboratory animal science and medicine field at the European decision making bodies.
- ✦ The need for veterinarians to participate in the running of laboratory animal facilities and ethics committees (or equivalent) is not systematically addressed. European regulations should ensure veterinary oversight of animal care and use programmes.

DAY TO DAY ACTIONS

- ✦ **European Union Stakeholder**
- ✦ **Participation in the elaboration of the EU Directive 2010/63/EU**
- ✦ **FELASA/ESLAV/ECLAM Working Groups on Veterinary Care, Severity Classification and Reporting**
- ✦ **EFPIA/FELASA/ESF*/ESLAV/ECLAM Coalition on the Transposition of Directive 2010/63/EU**
- ✦ **Technical Expert Working Group (TEWG) to the European Commission**
- ✦ **Participation in the Convention ETS123 Revision – Council of Europe**

*European Science Foundation

DAY TO DAY ACTIONS (continued)

- ✦ **Participation in the expert groups on severity classification and the Non Human Primates feasibility study**
- ✦ **European Cooperation in the field of Scientific and Technical Research (COST Action B24 "Laboratory Animal Science and Welfare"). It is supported by the ESF and the EU**
- ✦ **Member of AAALAC - I Board of Trustees**
- ✦ **Establish dialogue and contact with National Lab Animal Authorities to promote ESLAV as recognised stakeholder**
- ✦ **Updates on e-Briefing journal and Website**

European Commission – 2010/63/EU

Expert Working Group meetings



ESLAV invited to designate Expert(s) to attend Expert Working Group Meetings. Experts were always proposed in agreement with ECLAM (and the “Coalition” was informed)

- EWG on Information on Alternative Methods and the Three R’s Strategies (29-30 Nov. 2012): **Nikolaos Kostomitsopoulos**
- EWG on Project Evaluation and Retrospective Assessment (19-20 March 2013): **Anne-Dominique Degryse**
- 3rd EWG on Education and Training, **including for Designated Vets** (3-4 July 2013): **Ghislaine Poirier and Martje Fentener van Vlissingen**
- Future EWG?
 - Good Practices of Inspections?



EUROPEAN SOCIETY OF LABORATORY ANIMAL VETERINARIANS

European Commission – 2010/63/EU

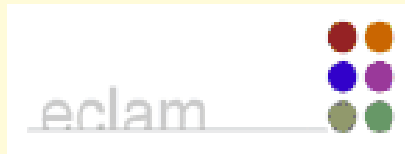
National Contact Point meetings



- ESLAV invited as “*Designated Observer Organisation*” at meetings of the **National Contact Points** for the Implementation of Directive 2010/63
 - Other organisations: EBRA, EFPIA, FELASA, ECEAE, Eurogroup For Animals
 - Tasks of the NCP meetings: to follow up on Transposition process and related issues (closed session) and to amend documents written following EWG meetings
 - 5th NCP Meeting on 23-24/01/2013
 - Discussion and NCP endorsement of
 - a corrigendum to the previously endorsed consensus document on the Initial Welfare Assessment of a newly created genetically altered animal line
 - an updated consensus document on education and training framework
 - demonstrative examples of severity assessment process as an Annex to the endorsed consensus document
 - recommendations for completion of Non-technical project summaries
 - Presentation of the current state of play concerning statistical reporting
 - 6th NCP Meeting on 18-19/09/2013
 - Discussion and NCP endorsement of
 - an updated consensus document on **Education and Training framework**
 - a consensus document on Project Evaluation and Retrospective Assessment
 - Presentation of the final report from the EWG on the Information on the Three Rs
 - Presentation of the current state of play concerning statistical reporting
 - Information on the planned future work



Education & Training



European College of
Laboratory Animal Medicine



European Society of
Laboratory Animal Veterinarians



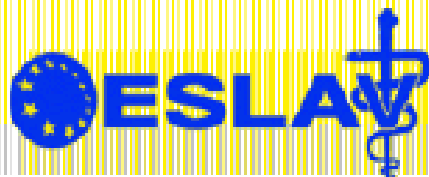
Laboratory Animals
Veterinary Associations



European Veterinarians in
Education, Research and Industry

- **ESLAV-ECLAM-LAVA-EVERI Position Paper on The Role, Training and Education with Regards to the Veterinarian under Directive 2010/63/EU on the Protection of Animals used for Scientific Purposes**

Authors: Ghislaine Poirier, Caroline Bergman, Delphine Denais-Lalieve, Ismene Dontas, Nicolas Dudoignon, Helmut Ehall, Martje Fentener van Vlissingen, Massenzio Fornasier, Rony Kalman, Axel Kornerup, Sabine Schueller, Patri Vergara, Richard Weilenmann, Jean Wilson, Anne-Dominique Degryse



EUROPEAN SOCIETY OF LABORATORY ANIMAL VETERINARIANS

Political and professional representation

- ★ **Umbrella organisation for European LAVets**

There is an increasing recognition in Europe and the International community at large, that the care and welfare of animals used for scientific purposes should be given to specialists

- ★ **We are represented in Europe through the Federation of Veterinarians in Europe through our participation in EVERI (European Veterinarians in Education, Research and Industry).**



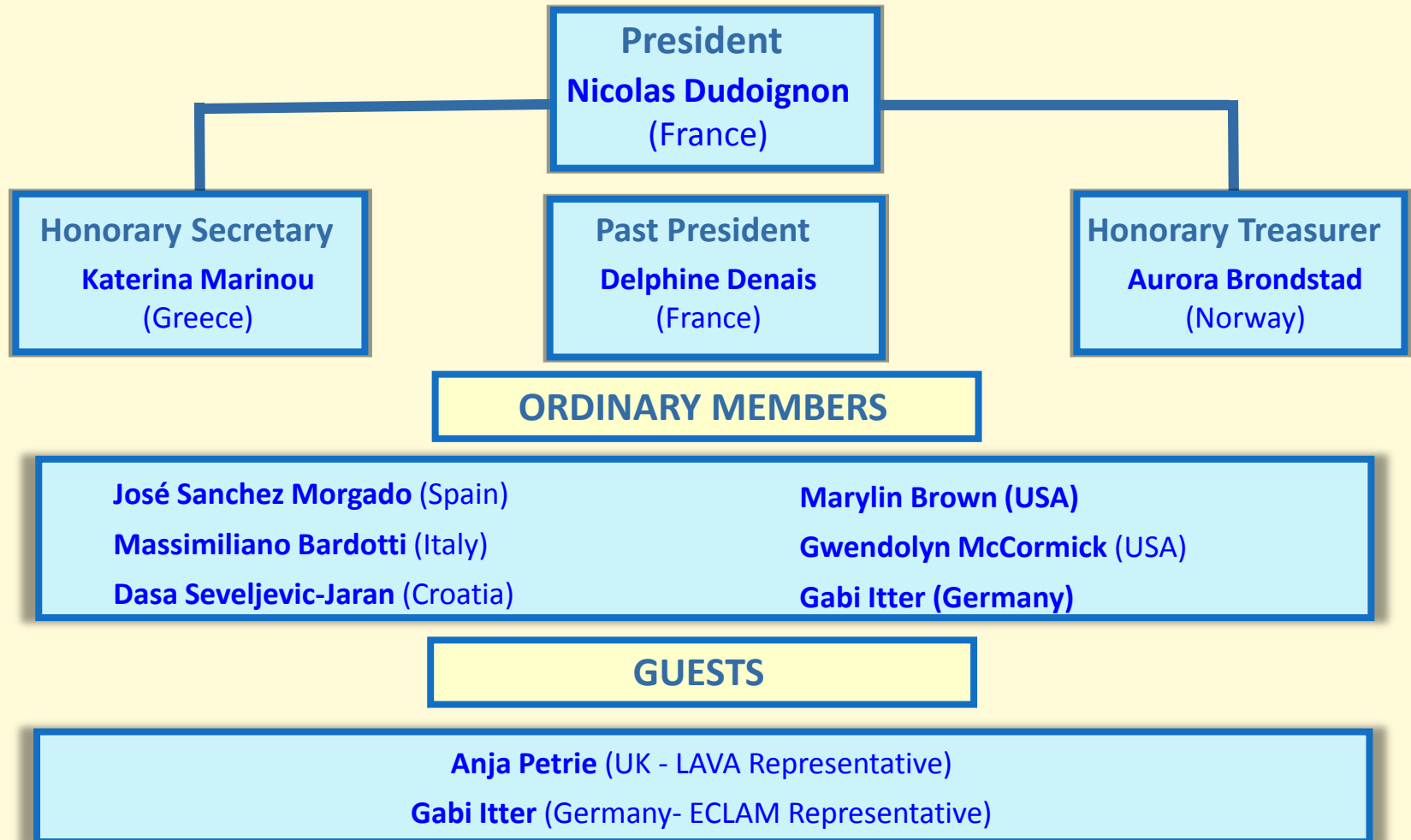
EUROPEAN SOCIETY OF LABORATORY ANIMAL VETERINARIANS

ORGANISATION

- ✦ **The official language of the Society is English**
- ✦ **Registered as a non-profit organisation in France**
- ✦ **Constitution and By-Laws**
- ✦ **Governing Board**
 - **Consists of the President, the President Elect or the Past President, the Secretary, the Treasurer and at least 4 Ordinary Members**
 - **Guests with observer status from other Societies (LAVA) or allied disciplines (ECLAM) are invited**



GOVERNING BOARD



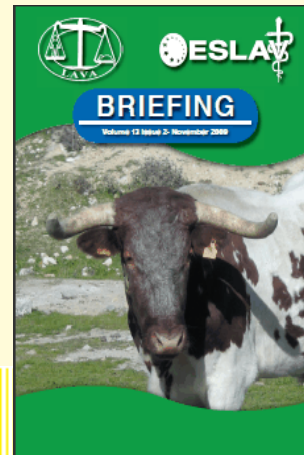
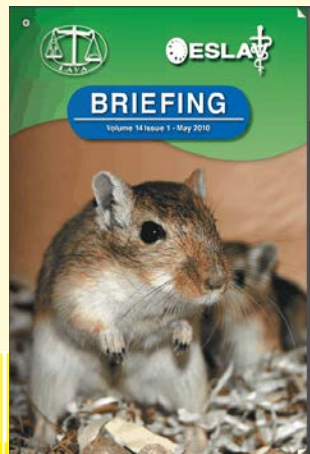
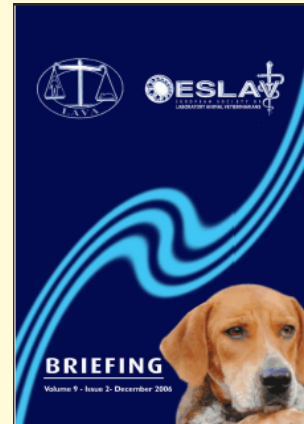
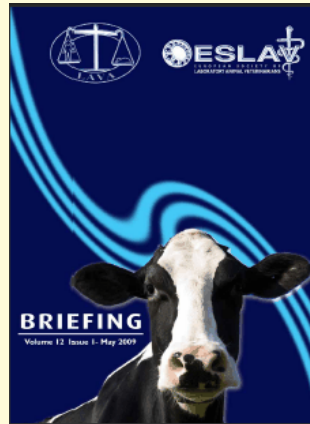
ESLAV WORKING GROUPS

- ✦ **Communication:** Operate the website. Plan and implement a relations plan with organizations/institutes/members
- ✦ **Scientific:** Planning scientific meetings
- ✦ **Membership:** Increasing the membership. Leading the National Representatives
- ✦ **Sponsorship:** Create and maintain sponsorship relations with organizations
- ✦ **Continuing Education:** To support continuing professional education and training of ESLAV members and promote the development of learning opportunities



BRIEFING

Available at 'Members only' section of web site
(log in and password required)



ESNAV

EUROPEAN SOCIETY OF LABORATORY ANIMAL VETERINARIANS

ESLAV/ECLAM

ESLAV

The European Society of Laboratory Animal Veterinarians (ESLAV) gives veterinarians a forum to discuss issues which concern them, in the field of laboratory animal science, in general and in Europe specifically.

ECLAM

The European College of Laboratory Animal Medicine (ECLAM) is a veterinary speciality organisation established within Europe for the speciality of laboratory animal medicine (LAM) and, like other veterinary speciality colleges, is overseen by the European Board of Veterinary Specialisation (EBVS, www.ebvs.org). ECLAM was founded in 2000 following an initiative of the European Society of Laboratory Animal Veterinarians and was awarded full recognition by EBVS in 2008.



News

[Newsletter from the World Veterinary Association \(WVA\) June 2014](#)

09-06-2014 | [Read more](#)

[Association of the European Primate Veterinarians \(EPV\) 14th Annual Symposium](#)

28-04-2014 | [Read more](#)

[Joint HSBLAS/ESLAV/ECLAM meeting in Athens](#)

07-04-2014 | [Read more](#)

[BSTP/ACCP/MRF Joint Meeting - Rational Selection of the Non-Rodent Species](#)

28-03-2014 | [Read more](#)



Member section ESLAV



Member section ECLAM



EUROPEAN SOCIETY OF LABORATORY ANIMAL VETERINARIANS

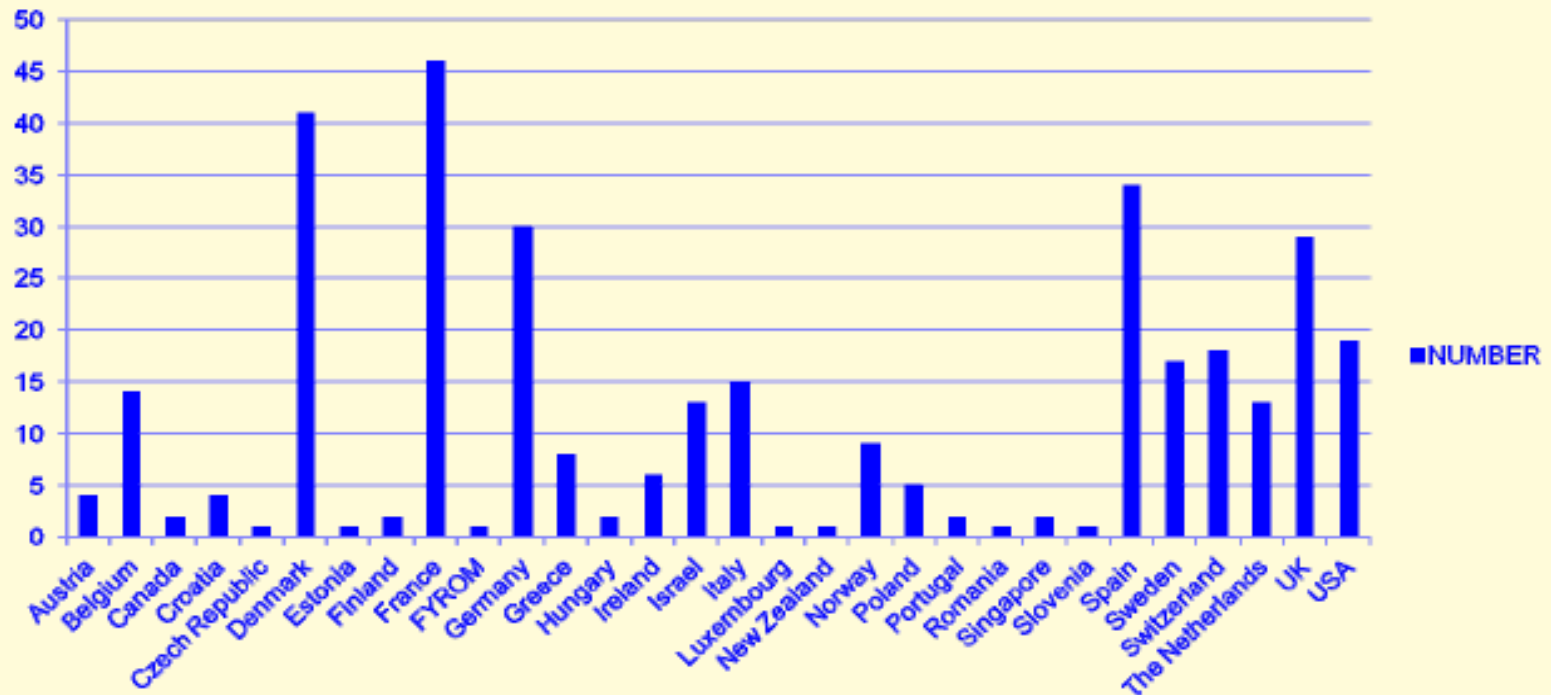
MEMBERSHIP

- ✦ **Membership is open to all veterinarians regardless of nationality**
- ✦ **New members are to submit their application in writing to the Secretary and be supported by two actual members of the Society. Membership is granted by the Governing Board.**
- ✦ **Three categories of membership exist: Ordinary members, Honorary members and Student members.**
- ✦ **An annual subscription fee of 45 EURO is due by March 31st; students are entitled to a reduced fee of 15 EURO. Members of the new EU countries are entitled to a reduced membership (and meeting) fees for 3 years at € 45.**
- ✦ **ESLAV started off in 1998 with 24 members. The Society has since grown and now has more than 340 members from more than 32 different countries.**

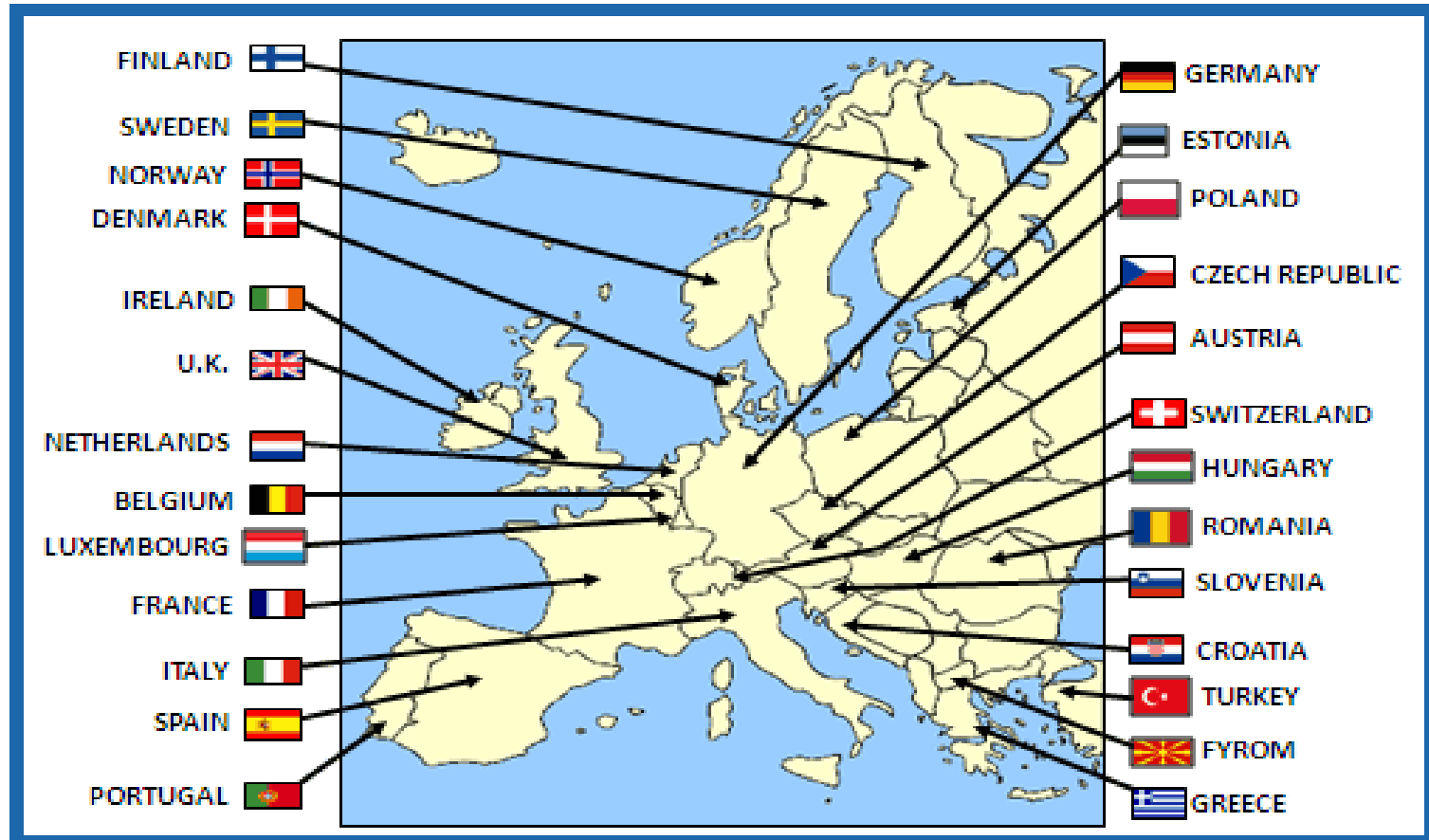


Members per country (1)

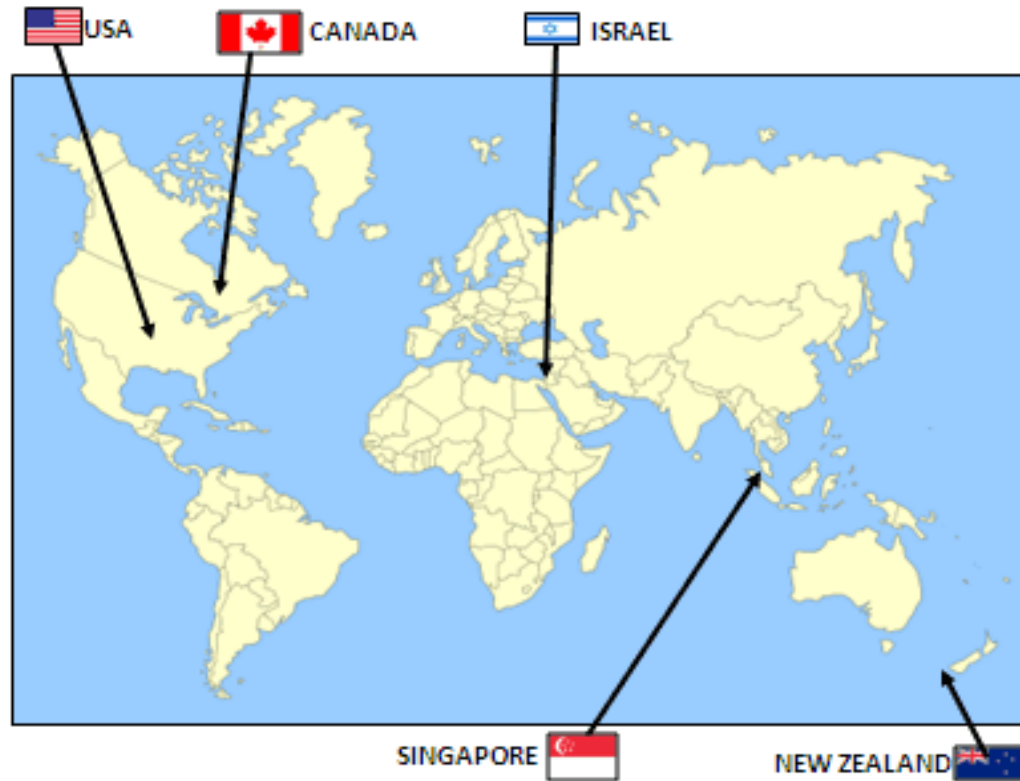
NUMBER



EUROPEAN SOCIETY OF LABORATORY ANIMAL VETERINARIANS



WHERE WE ARE



ESLAV REPRESENTATIVES

Austria	No representative (Hans Hedrich)
Belgium	Meurrens, Kris
China	James, Antony
Croatia	Seveljevic-Jaran, Dasa
Czech Republic	Kovaru, Frantisek
Denmark	Glerup, Peter
Finland	Frias, Rafael
France	Decrock, Frederic
Germany	Hedrich, Hans
Greece	Marinou, Katerina
Hungary	Gyorgy Fekete, Sandor
Ireland	Garcia, Yolanda
Israel	Uzi, Ifat
Italy	Steidler, Stephanie
Netherlands	Fentener van Vlissingen, J. Martje
Norway	Bronstad, Aurora
Poland	No representative (Peter Sowinski)
Portugal	Antunes, Luis Miguel Joaquim
Slovenia	Pogacnik, Milan
Spain	Visa, Joana
Sweden	Jeneskog, Torgny
Switzerland	Weilenmann, Richard
UK	Sowinsky, Peter S J
USA	McCormick, Gwendolyn



MEMBERS BENEFITS

- ✦ Dissemination of information through co-authorship of Briefing, ESLAV restricted mailing list and website
- ✦ Participation in the preparing of European laboratory animal legislation and policies
- ✦ Participation in Working Groups (Council of Europe, European Union)
- ✦ Organisation of Annual Scientific Meetings (whenever possible in conjunction with a European LAS organisation)
- ✦ Prizes for members
- ✦ Restricted access on the ESLAV members website area

MEMBERS BENEFITS

✦ **Scientific meeting**

The ESLAV scientific meetings are an opportunity to increase your knowledge in the field of laboratory animal medicine as well as gain Continuing Education credits that you will need when pursuing the ECLAM board examination.

✦ **The ESLAV website**

As a member you have access to the website that will give you access to relevant links, useful downloads and a membership forum designed to assist you in your daily work as a laboratory animal specialist.

✦ **Employment forum**

ESLAV has as its goal, to become an important source of employment opportunities. By becoming a member you will be able to use the organisation to search for and announce job opportunities



EUROPEAN SOCIETY OF LABORATORY ANIMAL VETERINARIANS

MEMBERS BENEFITS



HOW TO BECOME AN ESLAV MEMBER

ESLAV is open to all veterinarians who work in the field of laboratory animal medicine.

Application forms for ESLAV membership are available on:
<http://www.eslav.org/membership.html>

It is necessary that each application be supported by two members of good standing in the society.

Annual membership fees have been set at EUR45.00. The student fee has been set at EUR15.00/year.
The ESLAV Governing Board will

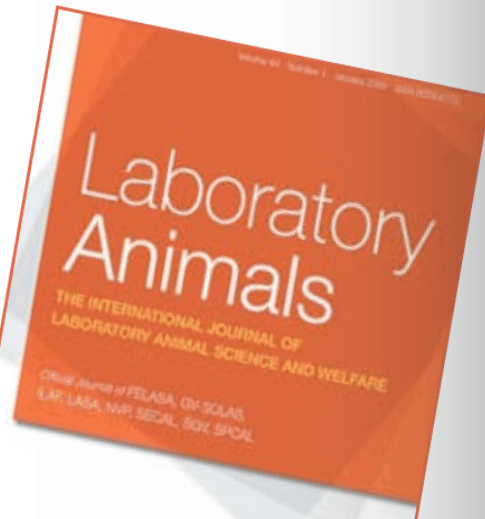
review the applications and grant memberships.

Note: Data are kept in an electronic format and will be used within the society only for the administrative purposes of the society.

SPECIAL FEE FOR LABORATORY ANIMALS JOURNAL SUBSCRIPTION FOR ESLAV MEMBERS



ESLAV Governing Board has reached an agreement with Laboratory Animals Ltd. so that any member of these societies will be able to receive the journal 'Laboratory Animals' for less than the 25 % of the standard fee.



Any member of ESLAV will be able to receive the journal "Laboratory Animals" for less than 25% of the standard fee.



EUROPEAN SOCIETY OF LABORATORY ANIMAL VETERINARIANS

ESLAV National Representatives

- ✦ **ESLAV aims to serve its membership best by appointing a representative in each country.**
- ✦ **Their main tasks are to reach out to the members and possible candidate members**
- ✦ **They also act as ambassadors for ESLAV to make the society better known with other national professional and scientific organisations**
- ✦ **The ESLAV National Representatives Coordinator organises and coordinates the actions of the ESLAV National Representatives and acts as New Emerging Countries coordinator**

SCIENTIFIC MEETINGS

- * **2000** 1st scientific meeting in conjunction with LAVA in Dublin
- * **2001** 2nd Scientific meeting in conjunction with University of Milan and AISAL
- * **2002** *Rodents, Reports and Reality: The Practical Details of Health Monitoring*, 3rd Satellite Workshop in Aachen, Germany at the 8th FELASA Symposium
- * **2003** *Mice, Men and Vets - are vets needed in ethical review?* 4th Workshop in co-operation with FINLAS/ Scand-LAS in Lahti, Finland
- * **2004** *Imaging, Immunology and Vets*, 5th Satellite Workshop in Nantes, France at the 9th FELASA Symposium
- * **2005** 6th ESLAV Workshop: Anesthesia and Analgesia of laboratory animals in co-operation with SECAL in Elche, Spain
- * **2006** 7th Joint scientific meeting with GV-SOLAS in Freiburg, Germany
- * **2007** 8th ESLAV workshop: *Surgical and pathological aspects in laboratory animal models, methods and phenotypes*, Satellite workshop in Cernobbio, Italy at the 9th FELASA symposium
- * **2008** 9th Joint scientific conference of LAVA and ESLAV in Dublin, Ireland
- * **2009** 10th Joint scientific meeting SGV-ESLAV-SAVIR
Swiss Federal Institute of Technology, ETH Hönggerberg Zürich
- * **2010** 11th Joint scientific meeting of ESLAV, LAVA and the ComVet AFSTAL in Toulouse, France: VETS FOR LIFE! Good science and good animal welfare go hand in hand
- * **2011** 12th Joint scientific meeting of ILAF-ESLAV-ECLAM , Jerusalem, Israel
- * **2012** 13th Joint scientific meeting of BCLAS-ESLAV-ECLAM, Liege, Belgium
- * **2013** 14th Joints scientific meeting of LAVA-ESLAV-ECLAM, Cambridge, UK





Laboratory Animal Science and Medicine in Translational Research: *from contribution to completion*

[Welcome](#) [Scientific Program](#) [Registration](#) [Abstract Submission](#) [Sponsorship Opportunities](#) [Accommodation](#) [Useful Links](#) [Contact](#)

Welcome

The Hellenic Society for Biomedical and Laboratory Animal Science (HSBLAS) in collaboration with the European Society of Laboratory Animal Veterinarians (ESLAV) and the European College of Laboratory Animal Medicine (ECLAM) is organizing the annual scientific meeting. The meeting will take place in Athens, on September 22-23, 2014.

The aim of the Meeting is to join laboratory animal veterinarians and scientists from different European and the East Mediterranean countries working in the field of Laboratory Animal Science to be informed on recent developments in Laboratory Animal Science and Medicine.



[Welcome](#) [Scientific Program](#) [Registration](#) [Abstract Submission](#) [Sponsorship Opportunities](#) [Accommodation](#) [Useful Links](#) [Contact](#)

Registration

For registration, please complete and submit the attached [Registration Form](#) by e-mail (secretariat@hsblas.gr) or by fax (+30 210 6597 365). Please note that early registration discounts expire July 31, 2014.

Hellenic Society of Biomedical
& Laboratory Animal Science



Pozivamo Vas na predstavljavanje knjige



Laboratory Mice and Rats in Biomedical Research

Rationale and Principles of Use

Urednice: Vlasta Herak Perković, Vanesa Ivetić Tkalčević

petak, 4. travnja 2014., u 15 sati
Auditorij, Fidelta d.o.o.
Prilaz baruna Filipovića 29, Zagreb

Knjigu će predstaviti:

Recenzenti:

Vladimir Bubalo, dr. med. vet.
prof. dr. sc. Željko Grabarević, dr. med. vet.
doc. dr. sc. Valentina Kubale Dvojmoč, dr. med. vet.

U ime autora:

dr. sc. Vanesa Ivetić Tkalčević, dr. med. vet.

U ime nakladnika:

Anđa Raič, prof.

Zainteresirani posjetitelji moći će kupiti knjigu po promotivnoj cijeni.



MEDICINSKA
NAKLADA

ADRESA: Zagreb, Cankarova 13
TE L./FAX: 01/3779-444; 01/3907-041
www.medicinskanaklada.hr

Fidelta
A Galapagos Company

The book describes good veterinary practices in animal related research across the following LAS related topics i.e. chapters:

- **Introduction to LAS**
- **Bioethical aspects and legal acts**
- **Biology of laboratory mice and rats**
- **Husbandry of mice and rats**
- **Principles of use of laboratory mice and rats in *in vivo* experimentation**
- **Principles of surgery, recognition of pain and distress: anaesthesia, analgesia and euthanasia of laboratory mice and rats**
- ***In vivo* models of translation research**
- **Principles of histopathological assessment in *in vivo* disease models**
- **Transgenesis**
- **Alternative methods to animal experimentation**





Figure 4-8. Paper Wool (A) and Paper Shavings (B) make excellent bedding and nesting materials for small animals; these are made from virgin paper. The Cocoon (C), virgin paper rolled into cylindrical shape, offers the animal an opportunity to fulfill their nesting instincts. Alpha Cuts (D) are mini rolls of multi-layered virgin paper cut in short lengths to give the animals nesting material which enhances nest building instincts. ALPHA-oh dust free bedding (E) consists of uniform particle sizes produced from pure cellulose flour each 5 mm², highly absorbent. Shepherd's Specialty Blend (F) is comprised of 50% of ALPHA-oh and corn cob and absorbs over 300% of its weight. This means it is one of the most absorbent bedding materials available today. Enviro-Din (F) is made from virgin kraft paper fibres, and forms a soft, springy, comfortable mat ideal for bedding and nesting. Its absorption capacity maintains dryness for added animal comfort. Images supplied courtesy of LBS (Serving Biotechnology) Ltd. (www.lbs-biotech.com).

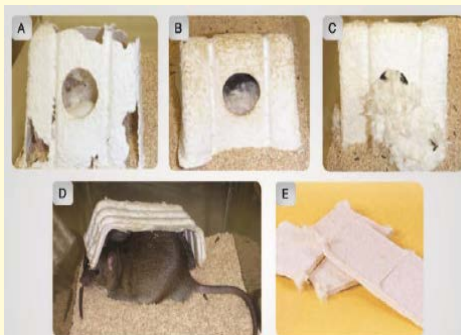


Figure 4-9. Paper shelters (they come in different sizes) placed in the cages increase the surface area, provide a refuge for nesting, and stimulate activity. Since the shelters are made of paper, they are light-weight and easy for animals to manipulate, hence the synonym "manipulanda". The figure represents paper shelters used in combination with a nestlet on a thick layer of corn cob bedding in a cage with BALB/c mice (A), C57BL/6 mice (B), DBA mice (C), and Dark Agouti rats (D). Nestlets (E) are made from pulped, virgin cotton fibre, sterilized during manufacture. Nestlets provide a perfect nesting material addition to standard bedding. Their provision encourages the rodents' natural instinct to shred material for nest building, adding extra interest and beneficial exercise. Image E supplied courtesy of LBS (Serving Biotechnology) Ltd. (www.lbs-biotech.com).



A



B

Figure 4-10. Tinted (A) and Great Fun (B) tunnels for cages with laboratory mice and rats. Images supplied courtesy of LBS (Serving Biotechnology) Ltd. (www.lbs-biotech.com).

Table 4-2. Different enrichment strategies for laboratory mice and rats.

Enrichment strategies for mice and rats	
Group housing	<ul style="list-style-type: none"> • Mice and rats are highly social and function best in paired or group housing • Aggression can be a problem with males, especially among mice • The most successful groups are formed with weanlings who know each other • Same-sex groups should be set up before puberty • Adding or removing an individual can affect the wellbeing of the whole group
Human-animal relationship	<ul style="list-style-type: none"> • Conduct systematic, gentle, daily handling that is not linked with procedures that may cause stress • 'Gentling' allows the rat or mouse to become familiar with humans (the animal is allowed to explore its handler and is gently stroked and held) • Train animals to become used to procedures that have to be repeated. This may involve positive reinforcement or treats after the procedure is completed
Food	<ul style="list-style-type: none"> • Rodents prefer to forage for their food • Scatter food, including small quantities of seeds in the substrate, allows foraging and lets the rat or mouse adopt a normal eating posture • Scatter seed on top of the pelleted food. Some will fall through the cracks, but most will be trapped between the pellets. The rats learn to manipulate the pellets to access the seeds that fall through. Delivery of the seed is random, but foraging is controlled by the rat • For variety, offer alternative foods in addition to pelleted chow
Physical environment	<ul style="list-style-type: none"> • Rats and mice are nocturnal; therefore, they need to be able to hide from light and seek refuge (e.g. with cardboard rolls, plastic margarine containers, etc) • Enlarge the floor space by providing levels within the cage or by providing items to climb on or exercise in • When moving about, mice prefer to stay in contact with a wall and away from open spaces. Providing dividers in the cage can make the mouse feel more secure • Cages with solid bottoms allow the use of substrates, which provide opportunities for rodents to dig • Cage lids should have bars to allow for climbing and acrobatic activities • Provide rats with a solid, opaque nest box with a top that the rat can climb onto • When given a choice, rats prefer a nest box to shredded paper
Olfactory stimulation	<ul style="list-style-type: none"> • Olfactory cues are very important to rodents and are the foundation for development of their social organization • Aggression in males is common following box cleaning, because territorial scent marking is disrupted. Placing some of the nesting material from the dirty box into the clean box may reduce this. Do not place soiled substrate in the clean box, as this may increase aggression • Rats are natural predators of mice, and the smell of rats will cause a fear response in the mice. Therefore, these two species should not be housed together • Adding shredded paper after cage cleaning reduces the olfactory load and encourages nesting behaviour
Encouragements of species specific behaviours	<ul style="list-style-type: none"> • Room lights should be on a day-night cycle, preferably with dimming to imitate dawn and dusk • Provide nesting materials such as tissues, hay or shredded paper, paper towels, paper strips, commercial nesting fibre or wood wool. Mice will build nests with these items with apparent enthusiasm, not just for the young but also to hide from light or other stressful stimuli • Substrate must also be provided for rats and mice. Examples include wood shavings, sawdust and pelleted paper • Encourage natural behaviours like digging and tunnelling by providing a substrate that is several centimetres thick • Provide rats with increased structural complexity using shelves, platforms, shelters and ramps

Questions and Answers

ESLAV poster and handouts available in
poster exhibition area,
as is the book

Thank you for your attention !



EUROPEAN SOCIETY OF LABORATORY ANIMAL VETERINARIANS